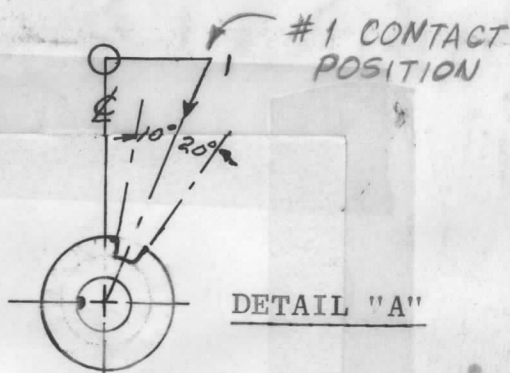


DESG.	DIMENSION	TOL.	REMARK
		±.015	SHAFT LG. FROM MTG. SURFACE
		±.005	BUSH. LG.
		±.015	FLAT LG. (IF REQ.)
		±2°	FLAT ANGLE (IF REQ.)
		±.002	FLAT (IF REQUIRED)
		±.010	KEY LOCATION (IF REQ.)
			KEY LOCATION (IF REQ.)
		±.010	
			REAR SCR. EXT.
		±.031	REAR SHAFT EXT.
			1st SEC. SPACING

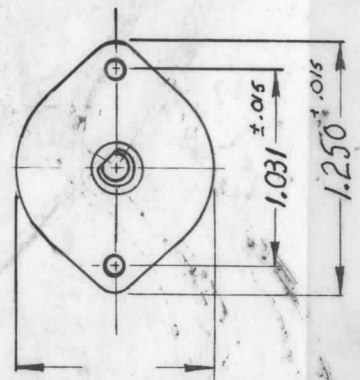
TMC PART NUMBER: _____ STAMP ON FRONT PLATE
 FRONT PLATE SHAPE: ROUND OR OBLONG
 MECHANICAL SPECIFICATIONS:
 NUMBER OF SECTIONS- 3
 NUMBER OF POSITIONS- 12
 ANGLE OF THROW- 30°
 CONTACTS:
 SHORTING TYPE, SECTIONS SEE DETAIL A WS-134-1
 NON SHORTING TYPE, SECTIONS 2 WS134-2
 SILVER PLATED BRASS, SECTIONS _____
 SILVER ALLOY, SECTIONS 1 & 2 & 3
 WAFERS:
 BAKELITE, SECTIONS 1 & 2 & 3
 CERAMIC, SECTIONS _____
 MYCALEX, SECTIONS _____
 IMPREGNATION (IF REQ.) _____
 FINISH REQUIREMENTS:
 ARMY _____ NAVY COMMERCIAL _____
 SALT TEST (IF REQ.) _____
 HARDWARE, TO BE SUPPLIED BY MANUFACTURER:

ELECTRICAL SPECIFICATIONS:
 MAXIMUM RATED VOLTAGE 110 VAC
 MAXIMUM RATED CURRENT 1

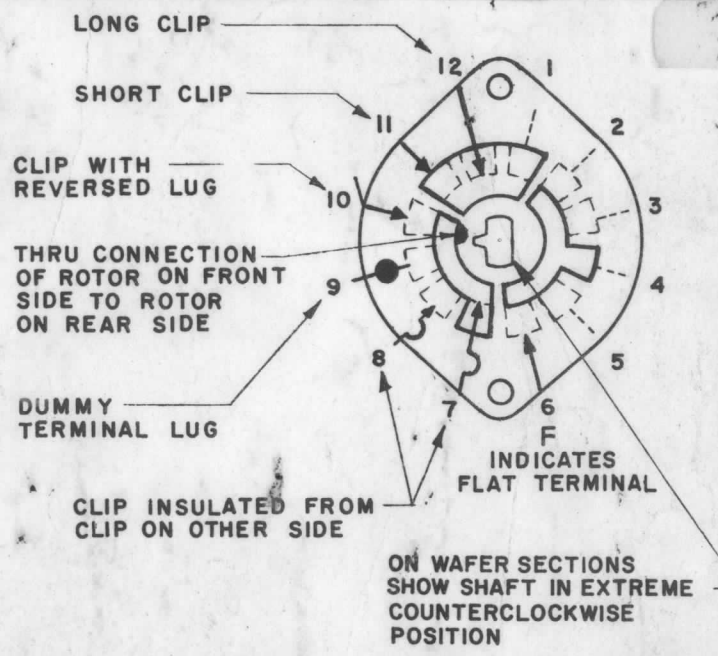


NOTE 1. LEADING EDGE SHORTING TYPE, TRAILING EDGE NON-SHORTING TYPE, NON-SHORTING BETWEEN CONTACTS.

NOTES



NOTE: OBLONG TYPE FRONT PLATE SHOWN, (SEE MECHANICAL SPECIFICATION)



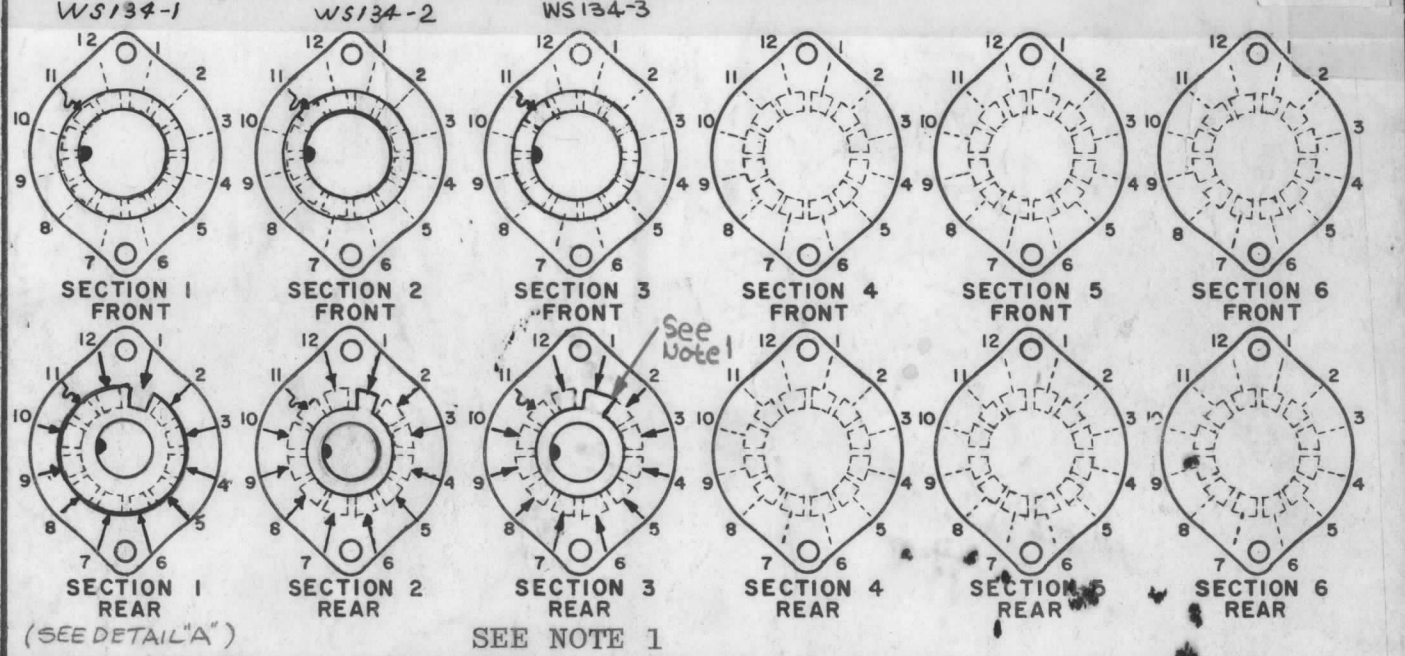
SYMBOLS USED IN MARKING PRINT

1	RFTA-1	
QTY./UNIT	MODEL USED ON	ASS'Y. NO.
SCALE	CODE	

THE CONTENTS OF THIS DRAWING ARE THE EXCLUSIVE PROPERTY OF THE TECHNICAL MATERIEL CORP. ITS UNAUTHORIZED USE OR REPRODUCTION IN WHOLE OR IN PART IS STRICTLY FORBIDDEN.

REVISIONS					
SYM	DESCRIPTION	DATE	E.M.N. NO.	DRAFT	CHKD APPD
X ₁	ON CONTACTS: 1ST & 2ND SECTION INFO. ADD.	4.6.65	X ₁	JTB	
Ø	ORIGINAL RELEASE FOR PRODUCTION	4/19/65	-M	CJL	
A	DETAIL "A" ADDED. CONTACT WAS LONG CLIP (P. 1)	7/9/65	14440	J.P.	J.C.B. J.M.M.
B	WS 134-3 ADDED (SECT. 3)	8-10-65	14661	M.P.	J.C.B. J.M.M.
C	SPECS REVISED. NOTE ADDED. PICT. CLARIFIED	9/15/65	14992	H.V.	J.C.B. J.M.M.

FRONT AND REAR SECTIONS VIEWED FROM FRONT OR KNOB END OF SWITCH IN EXTREME COUNTERCLOCKWISE POSITION.



SWITCH, ROTARY - 12 POINT TYPE

MATERIAL		THE TECHNICAL MATERIEL CORP. BUDETTI MAMARONECK, NEW YORK			
FINISH		TITLE SWITCH, SECTION, ROTARY			
UNLESS OTHERWISE SPECIFIED DIMENSIONS ARE IN INCHES AND INCLUDE CHEMICALLY APPLIED OR PLATED FINISHES		DRAWN	DATE	FINAL APPROVAL	DATE
		CJL	3/31/65	J.C.B. M.P.	7/3/65
		CHECKED	DATE		
		J.C.B.	4/19/65		
		ELECT. DES.	DATE		
		J.C.B.		WS134	
		MECH. DES.	DATE		
		J.C.B.	4/19/65	C	
		SHEET			REV. LTR.

DECIMALS	FRACTIONS
.X ± .05	± 1/64
.XX ± .01	ANGLES
.XXX ± .005	± 0° 30'