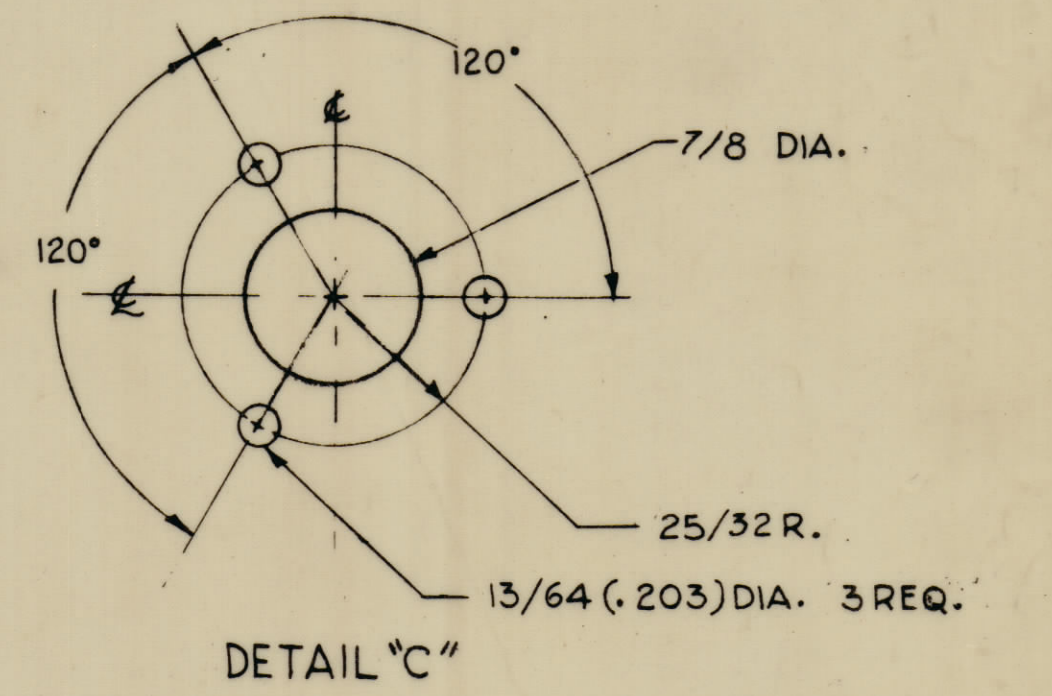
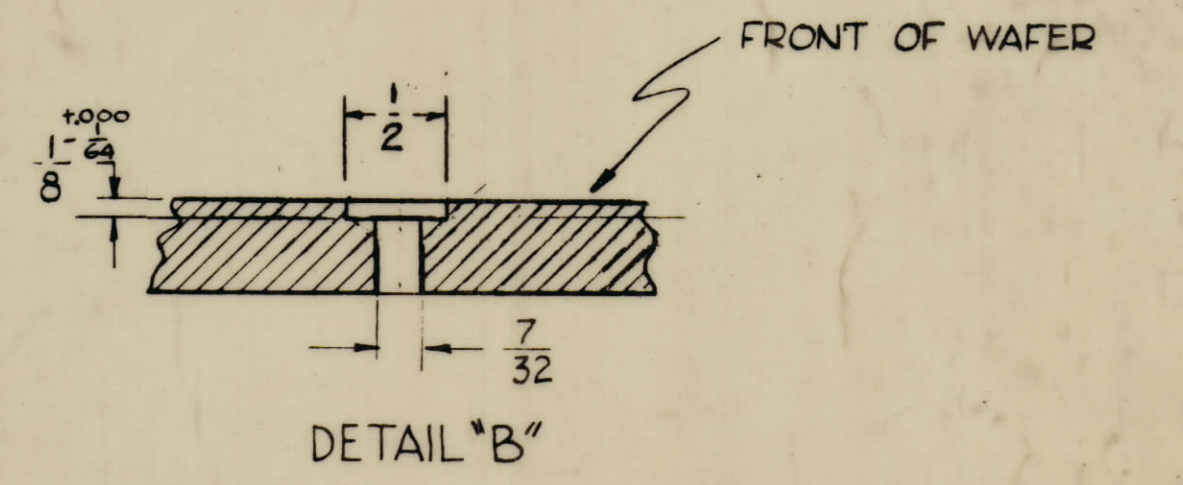


ALL HOLES AS PER DETAIL "B" EQUALLY SPACED 30° APART ON A 4 1/2 R. & 5 3/8 R.

- HOLES~
- A ~ 1/4 x 1/2 SLOT 3 REQ.
  - B ~ SEE DETAIL 14 REQ.
  - C ~ SEE DETAIL 1 REQ.
  - D ~ 7/32 DIA. 1 REQ.



**NOTICE TO PERSONS RECEIVING THIS DRAWING**

THE TECHNICAL MATERIEL CORPORATION claims proprietary right in the material disclosed herein. This drawing is issued in confidence for engineering information only and may not be reproduced or used to manufacture anything shown hereon without permission from THE TECHNICAL MATERIEL CORPORATION to the user. This drawing is loaned for mutual assistance and is subject to recall at any time.

Property of:  
THE TECHNICAL MATERIEL CORPORATION  
MAMARONECK, NEW YORK

A	MATERIALS ADDED	5-5-72	20673	EP	EP	EP
O	ORIGINAL RELEASE FOR PRODUCTION	3-3-64		AM		
SYM	SYMBOL	DESCRIPTION	DATE	CH. NO.	DRAFTS	CHECKER
UNLESS OTHERWISE SPECIFIED:						
DIMENSIONS ARE IN INCHES		SCALE	MAXIMUM ALLOWABLE TOLERANCES HAVE BEEN DETERMINED AND ANY DEVIATIONS WILL BE CAUSE FOR REJECTION. REMOVE ALL BURRS & SHARP EDGES			
TOLERANCES ON FRACTIONS ± 1/64		DECIMALS ± .005	ANGLES ± 1/2°			

1	GPT-40K(C) 4	AS-125	AX-458	12-5-63
REQ. PER UNIT	MODEL	SECTION	ASSY. NO.	DATE
USED ON				

REQ. ITEM	PART NO.	F. BUDETTI	DESCRIPTION	SYMBOL
	1/2		THE TECHNICAL MATERIEL CORP. MAMARONECK, NEW YORK	
STOCK SIZE		WAFER "L" SECTION RA. BANDSWITCH		
SUPRAMICA 500, MYKROY 750 SUPER MYKROY 1100		MATERIAL		
TYPE & TEMPER.		HEAT TREAT. SPEC.		
FINISH & SPEC. NO.		ELECTR. DES. APP. MECH. DES. APP. SHEET OF		
		WS-132		

WS-132 A