

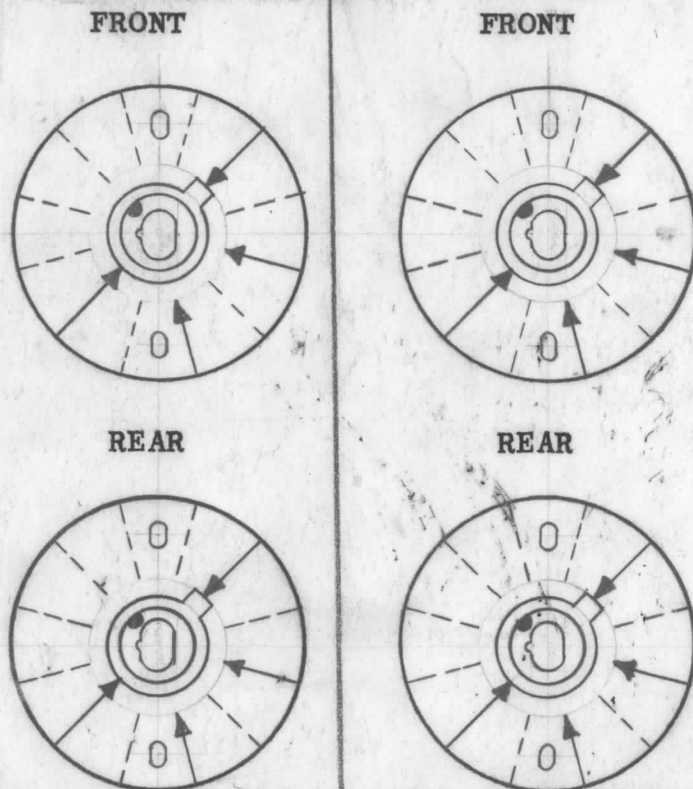
SYMBOLS USED IN MARKING PRINT
 OUTLINE ROTOR BLADES AS SHOWN ABOVE WITH SWITCH IN EXTREME COUNTER-CLOCKWISE POSITION

1. NUMBER OF SECTIONS: 2
2. ANGLE OF THROW: 30°
3. MARKING: TMC PART NO'S SHALL BE STAMPED IN BLACK GOTHIC ON SECTION EDGE AS SHOWN IN PICTORIAL.
4. CONTACTS & ROTORS: NON-SHORTING
5. MATERIALS & FINISHES
 - A. SECTIONS: CERAMIC PER MIL-I-10A, GRADE L422, OR BETTER
 - B. CONTACTS: BRASS, SILVER PLATED
 - C. ROTORS: BRASS, SILVER PLATED
 - D. SCREWS, SPLIT LOCKWASHERS, NUTS: STEEL, CADMIUM PLATED
 - E. SPACERS: BRASS, CADMIUM PLATED
 - F. CUSHION WASHERS: TYPE GEE EPOXY GLASS
6. CONTACT CONSTRUCTION: DOUBLE EYELET

NOTES

WS-131-1
SECTION #1

WS-131-2
SECTION #2

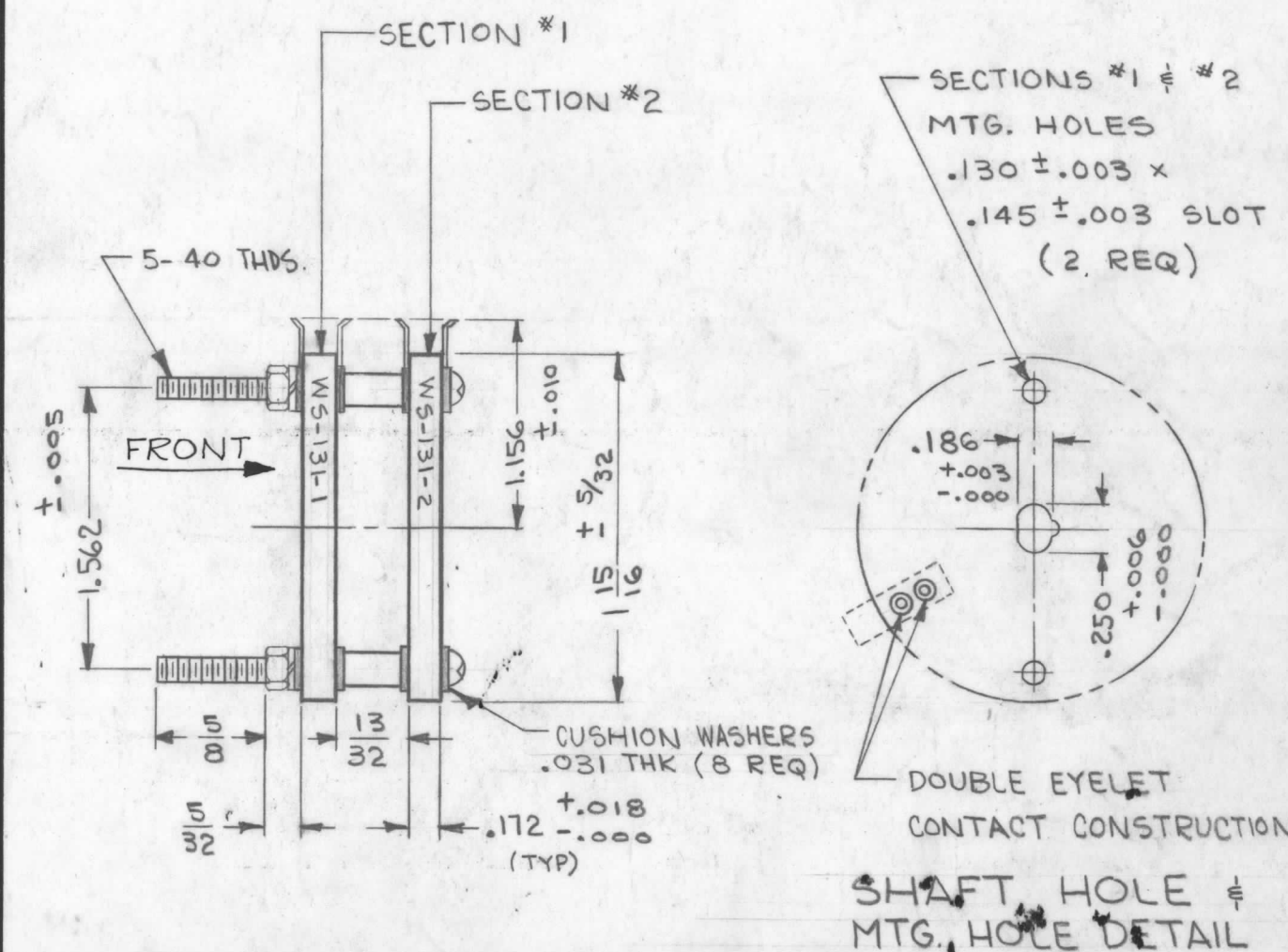


FRONT AND REAR OF SECTIONS VIEWED FROM FRONT OR KNOB END OF SWITCH IN EXTREME COUNTER-CLOCKWISE POSITION.

WS-131

REVISIONS

SYM	DESCRIPTION	DATE	E.M.N. NO.	DRAFT	CHKD	APPD
Ø	ORIGINAL RELEASE FOR PRODUCTION	1-13-64				



REQ'D.	ITEM	PART NUMBER	DESCRIPTION	SYMBOL
--------	------	-------------	-------------	--------

BUDETTI LIST OF MATERIAL THE TECHNICAL MATERIEL CORP. MAMARONECK, NEW YORK

MATERIAL	SEE NOTE #5	TITLE		SWITCH SECTIONS, ROTARY
FINISH	SEE NOTE #5	DRAWN		<i>[Signature]</i>
UNLESS OTHERWISE SPECIFIED DIMENSIONS ARE IN INCHES AND INCLUDE CHEMICALLY APPLIED OR PLATED FINISHES		DATE	12-6-63	FINAL APPROVAL
DECIMALS .X ± .05 .XX ± .01 .XXX ± .005		DATE	12-26-63	WS-131
FRACTIONS ± 1/64 ANGLES ± 0° 30'		DATE	1-13-64	
TOLERANCES		ELECT. DES.	<i>[Signature]</i>	Ø
		MECH. DES.	L. GABEL	REV. LTR.