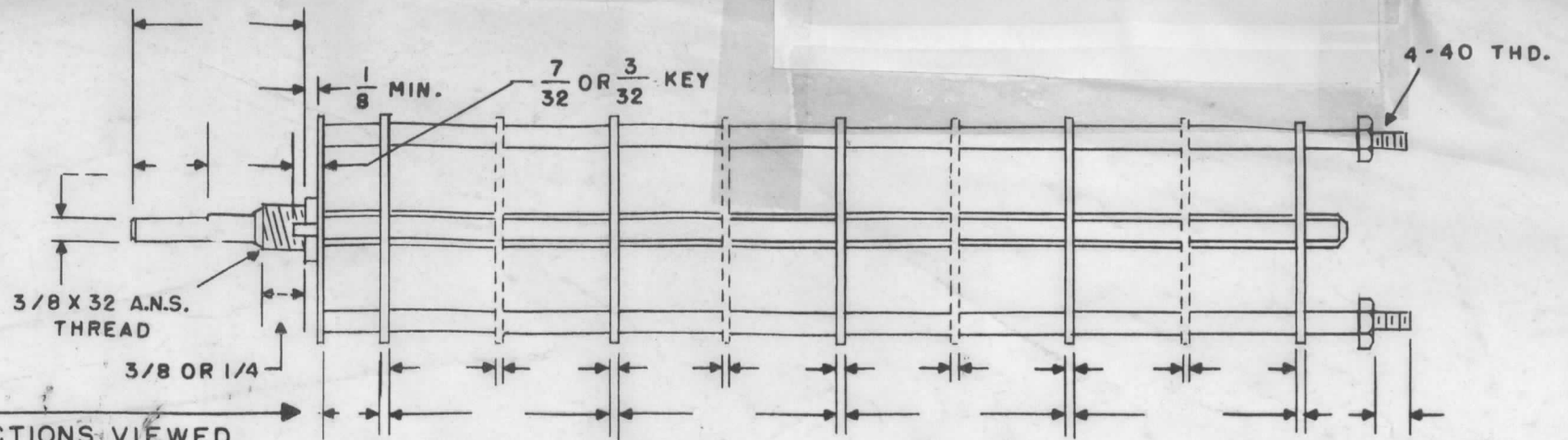
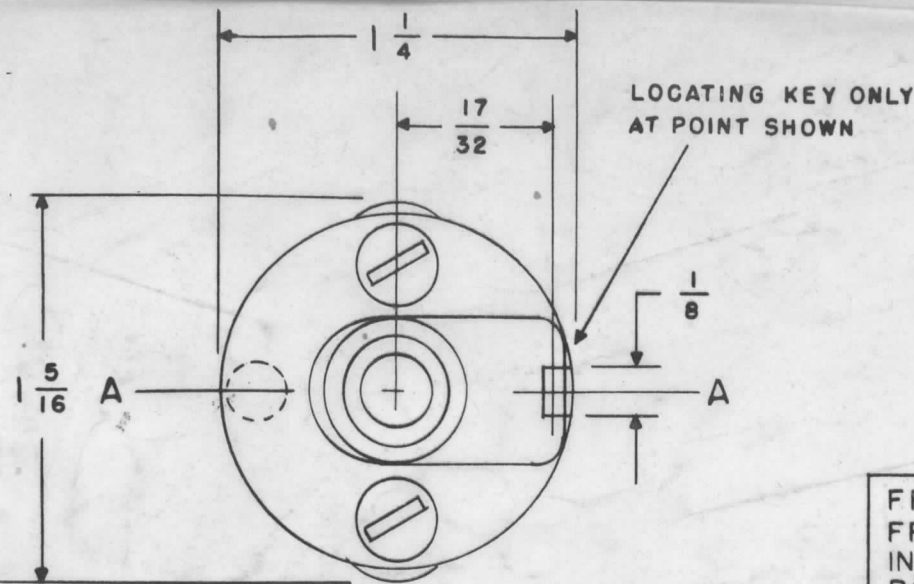


WS-127



FRONT & REAR OF SECTIONS VIEWED FROM FRONT OR KNOB END OF SWITCH IN EXTREME COUNTER-CLOCKWISE POSITION

SHOW CUT AWAY PORTION OF FLAT IN BLACK AND GIVE ANGLE TO LINE A-A ± 3°. (STANDARD RMA KNURLED AND SLOTTED SHAFT ALSO AVAILABLE)

NUMBER OF SECTIONS  $\frac{1}{7}$   
 NUMBER OF POSITIONS  $\frac{1}{7}$   
 ANGLE OF THROW  $\frac{1}{30^\circ}$  (30° OR 60°)

PART NUMBER WS-127  
 STAMP ON FRONT PLATE YES  NO

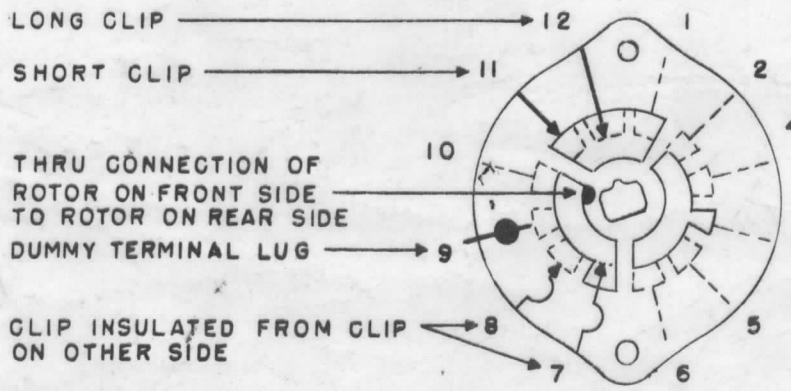
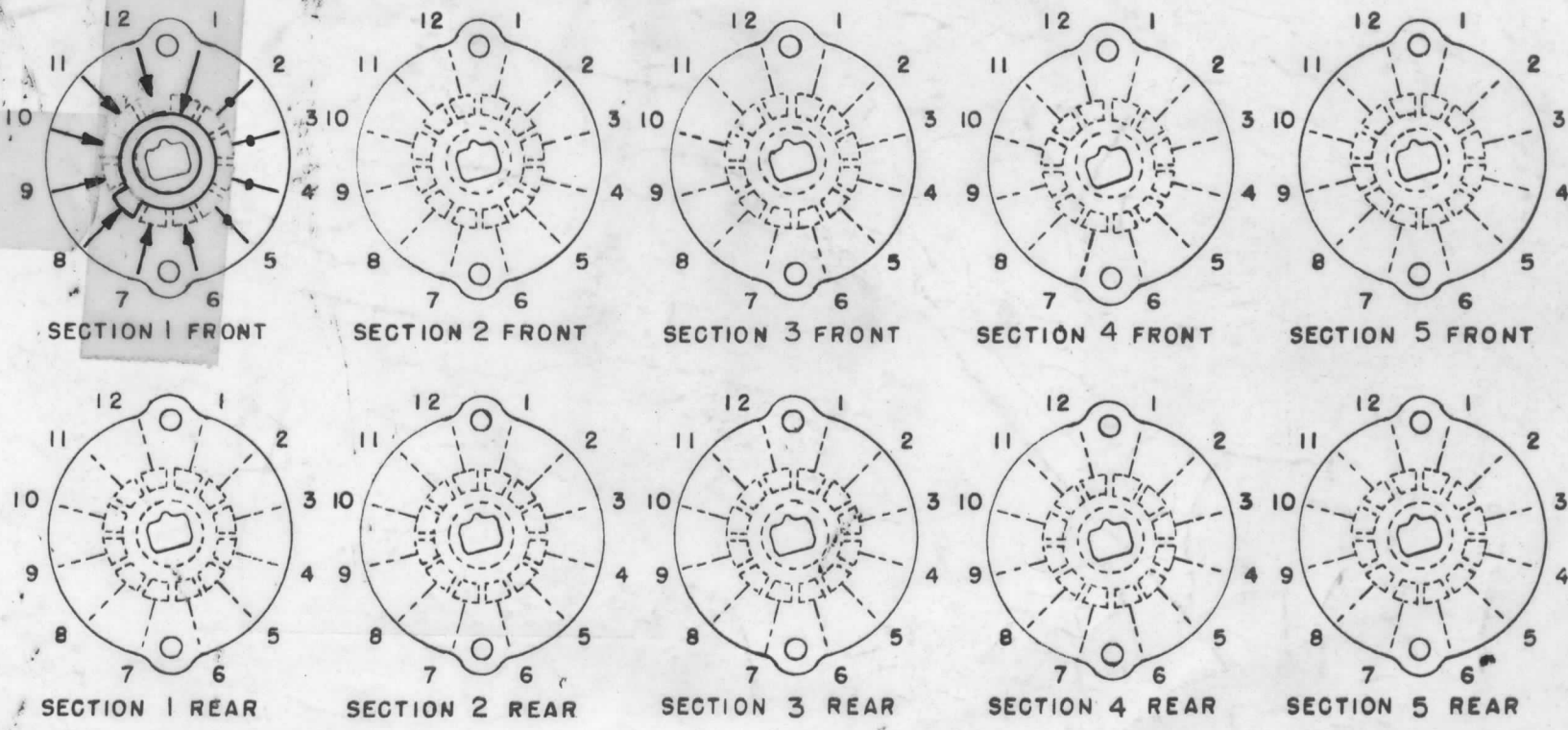
CONTACTS & ROTORS: (IF NOT SPECIFIED, SHORTING TYPE WILL BE SUPPLIED)  
 SHORTING  NON SHORTING

MATERIAL: (IF NOT SPECIFIED, SILVER PLATED BRASS WILL BE SUPPLIED)  
 SILVER PLATED BRASS  SILVER ALLOY

INSULATION: 1/16 BAKELITE  1/8 MYCALEX   
 SPECIFY IMPREGNATION IF REQUIRED \_\_\_\_\_

FINISH REQUIREMENTS: COMMERCIAL  ARMY  NAVY   
 SALT TEST (IF ANY GIVE DETAILS) \_\_\_\_\_

HARDWARE: SUPPLY  
 \_\_\_\_\_ 3/8-32 NUTS \_\_\_\_\_ ACROSS FLATS  
 \_\_\_\_\_ 3/8 INTERNAL TOOTH LOCKWASHERS



SYMBOLS USED IN MARKING PRINT

OUTLINE ROTOR BLADES AS SHOWN ABOVE WITH SWITCH IN EXTREME COUNTER-CLOCKWISE POSITION

ISSUE ITEM	CHANGED FROM	DATE	CH. NO.	DRAFTS	CHECKER	ENG. APP.
TOLERANCES						
DEC. DIM. ±		SCALE: S401-61 (TYPE DD)				
FRAC. DIM. ±		MAXIMUM ALLOWABLE TOLERANCES HAVE BEEN DETERMINED AND ANY DEVIATIONS WILL BE CAUSE FOR REJECTION.				
ANGULAR DIM. ±		REMOVE ALL BURRS AND SHARP EDGES				

2	HFI-1			10-18-61
REQ. PER UNIT	MODEL	PROJECT NO.	ASS'Y. NO.	DATE
USED ON				

REQ. ITEM	PART NO.	DESCRIPTION	SYMBOL
THE TECHNICAL MATERIEL CORP. MAMARONECK, NEW YORK			
STOCK SIZE		WAFER, SWITCH ROTARY	
MATERIAL			
TYPE & TEMPER		HEAT TREAT. SPEC.	
DRAWN		CHECKED	FINAL APPROVAL
FINISH & SPEC. NO.		ELEC. DES. APP.	MECH. DES. APP.