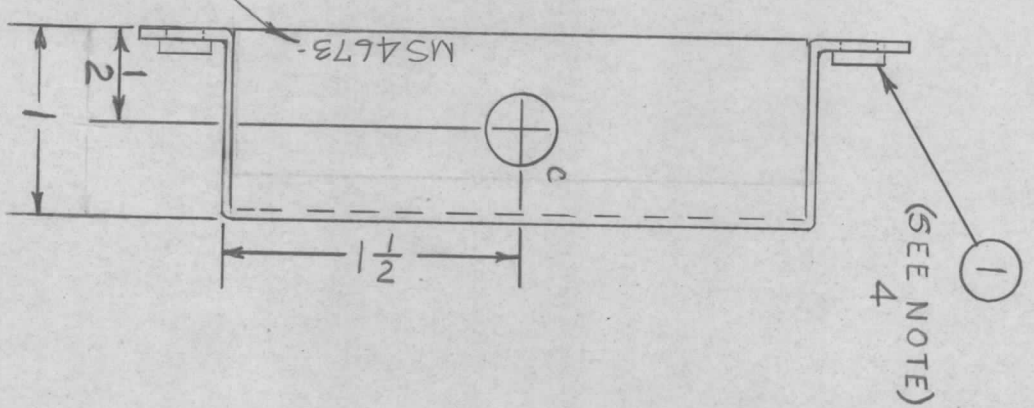
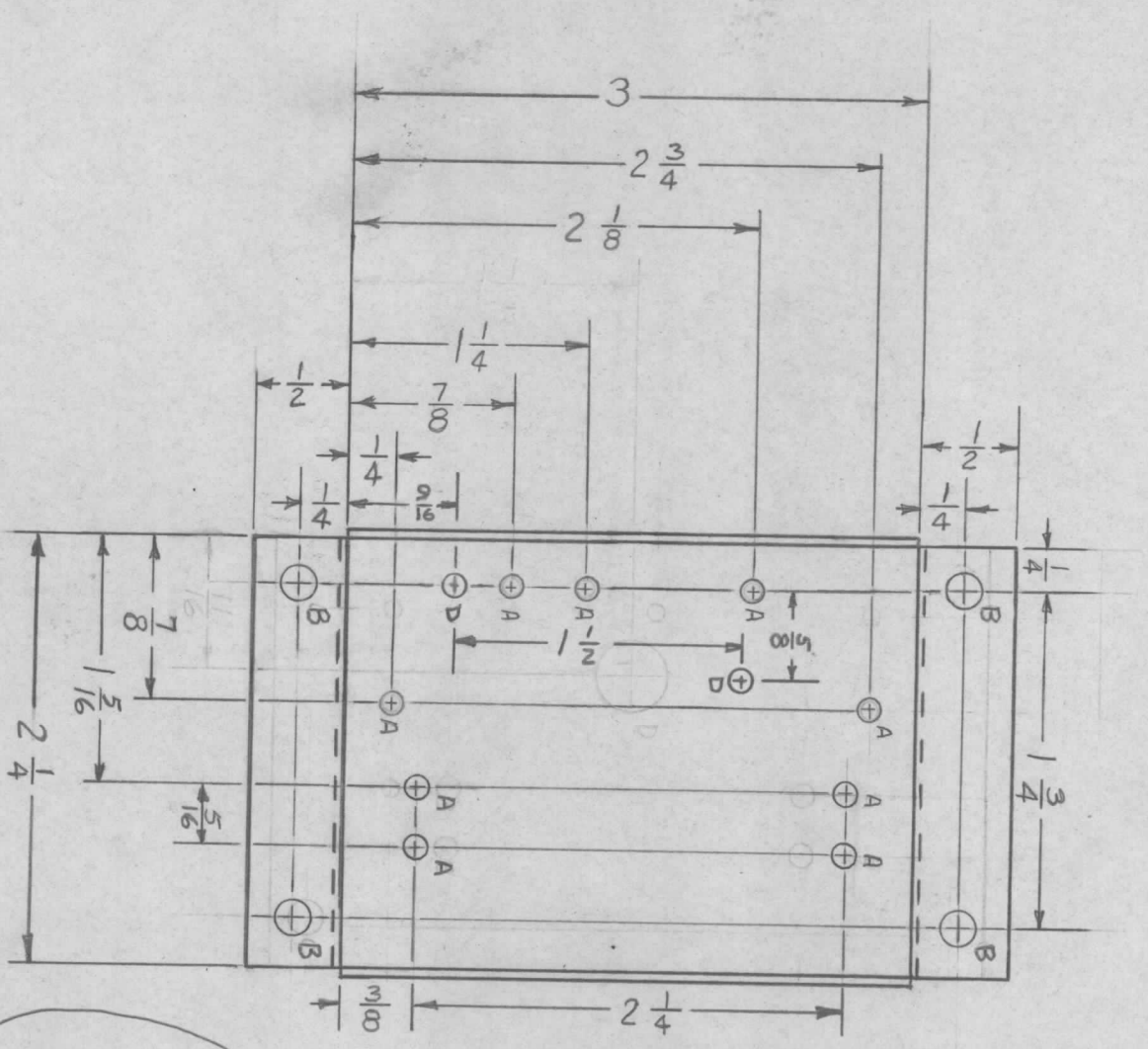


SYM	DESCRIPTION	DATE	E.M.N. NO.	DRAFT	CHKD	APPD
X1	UNLESS OTHERWISE SPECIFIED NOTES 1-4 ADDED	7-2-65	-M-	JC		
X2	"C" HOLE WAS .975 DIA	7-6-65	-M-	JC		
X3	"D" HOLES ADDED FOR PRODUCTION ORIGINAL RELEASE FOR PRODUCTION	7-22-65	-M-	MS		
		9/10/65	0	R/V		

M54673 Ø



METAL STAMP TWC  
PT. NO. 1/8 HIGH  
GOTHIC, W/LATEST  
REVISION LETTERED

HOLE	DIA.	REQ'D
A	1/8	9
B	.191-.194	4
C	1/2	1
D	11/64	2

- UNLESS OTHERWISE SPECIFIED:
1. USE MATERIAL THICKNESS FOR MAXIMUM RADIUS ON ALL BENDS
  2. ALL ANGULAR BENDS 90 DEGREES
  3. REMOVE ALL BURRS AND SHARP EDGES
  4. MOUNT INSERTS AFTER FINISHING

**NOTES**

QTY./UNIT	DDRR-506	MODEL USED ON	ASSY. NO.
SCALE	1:1		

THE CONTENTS OF THIS DRAWING ARE THE EXCLUSIVE PROPERTY OF THE TECHNICAL MATERIEL CORP. ITS UNAUTHORIZED USE OR REPRODUCTION IN WHOLE OR IN PART IS STRICTLY FORBIDDEN.

REQ'D.	ITEM	PART NUMBER	DESCRIPTION	SYMBOL
4	1	NT129-632-4	NUT, SWAGE TYPE	
STURMER				
MATERIAL				
.064 ALUM. 5052-H32				
FINISH				
S404 YEL. IRIDITE				
TOLERANCES				
DECIMALS: .X ± .05; .XX ± .01; .XXX ± .005				
FRACTIONS: ± 1/64; ANGLES: ± 0° 30'				
DRAWN		DATE	FINAL APPROVAL	DATE
CHECKED		DATE		
ELECT. DES.		DATE		
MEGH. DES.		DATE		

**LIST OF MATERIAL**

**THE TECHNICAL MATERIEL CORP.**  
MAMARONECK, NEW YORK

CHASSIS, COMPONENT MTG.

DATE: 8-8-65

SHEET: MS4673