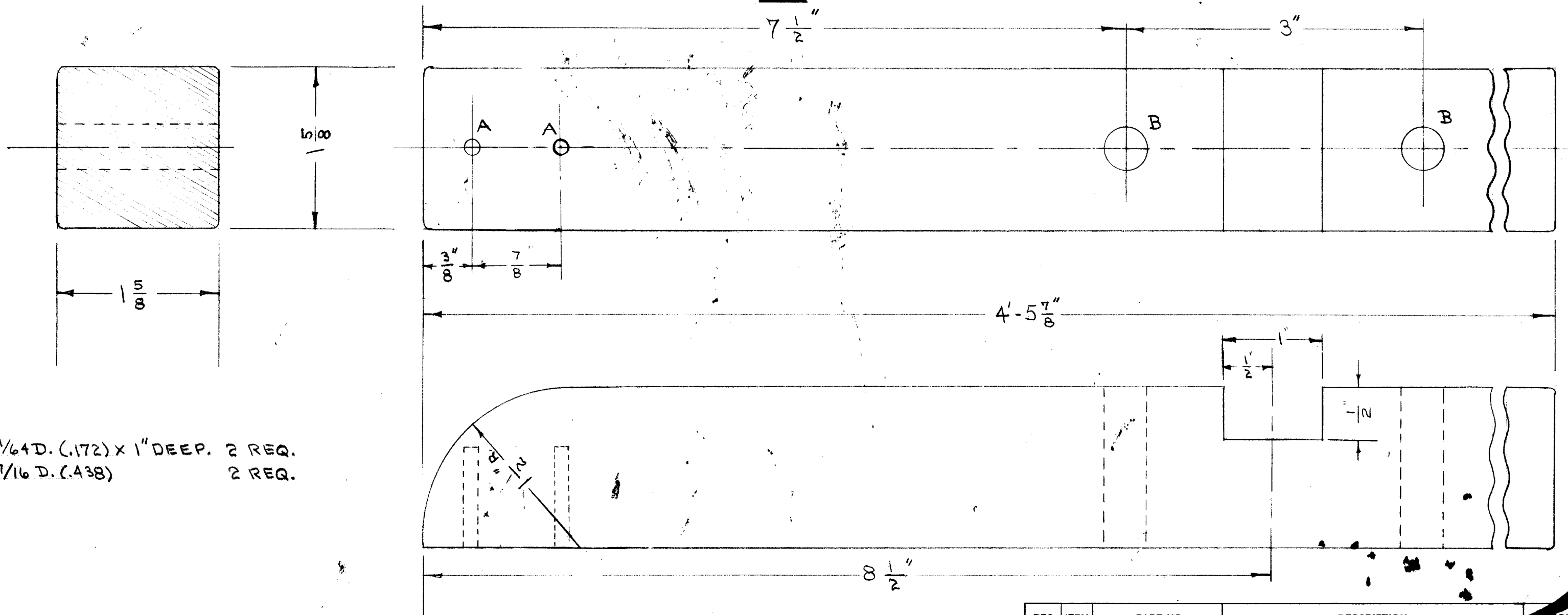


IF IT IS FOUND DESIRABLE TO CHANGE ANY TOLERANCE OR OTHER DETAIL SPECIFIED ON THIS DRAWING NOTIFY THE PURCHASER PROMPTLY.

MAXIMUM ALLOWABLE TOLERANCES HAVE BEEN DETERMINED AND DEVIATIONS WILL BE CAUSE FOR REJECTION. REMOVE ALL BURRS AND SHARP EDGES

RELEASED

WD-117



A - 1/64 D. (.172) X 1" DEEP. 2 REQ.
 B - 7/16 D. (.438) 2 REQ.

REQ.	ITEM	PART NO.	DESCRIPTION	SYMBOL
		2" X 2" X 4'-6"	THE TECHNICAL MATERIEL CORP.	
		STOCK SIZE	MAMARONECK, NEW YORK	
		OAK	LEVER	
		MATERIAL	WEIGHT PER PC.	
		—		
		TYPE & TEMPER	C.S.D. 10-8-57	
			DRAWN	ELEC. DES. APP.
			RJB 10-13-52	
		HEAT TREAT. SPEC.	CHECKED	FINAL APPROVAL
		2 COATS - CLEAR SPAR VARNISH.		
		FINISH & SPEC. NO.	WD-117	B

ISSUE	ITEM	CHANGED FROM	DATE	CN. NO.	DRAFTS	CHECKER	ENG. APP.
B	2	DIMENSIONS CHANGED FINISH ADDED	1/22/53	2	C.B.D.	A	
A	1	GENERAL REVISION	12-12-52	1	JAD		

ALL OTHERS	DEC. DIM. ± FRAC. DIM. ± 1/64 ANGULAR DIM. ±	DRILL, PUNCH, COMMERCIAL STOCK SIZES AND MANUFACTURERS TOLERANCES ARE NOT INCLUDED.
TOLERANCES		SCALE: FULL
MODEL	PROJECT NO. 141	ASS'Y. NO. A-187
		DATE 10-13-52