

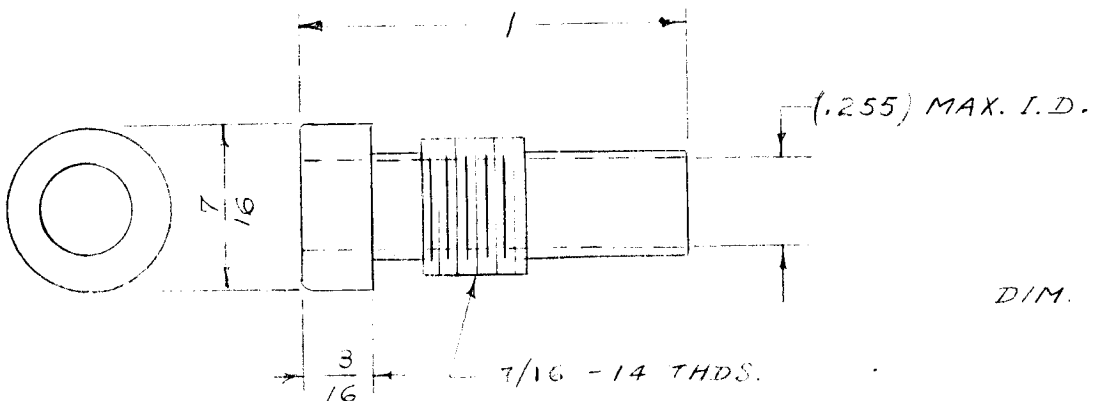
IF IT IS FOUND DESIRABLE TO CHANGE ANY TOLERANCE OR OTHER DETAIL SPECIFIED ON THIS DRAWING NOTIFY THE PURCHASER PROMPTLY.

# STANDARD DRAWING

*UG-176/U*

MAXIMUM ALLOWABLE TOLERANCES HAVE BEEN DETERMINED AND DEVIATIONS WILL BE CAUSE FOR REJECTION. REMOVE ALL BURRS AND SHARP EDGES

REQ. PER UNIT	USED ON			
	MODEL	PROJECT NO.	ASS'Y. NO.	DATE
1	RET-1		A-947	3-3-55



*DIM. FOR REF. ONLY*

*REF: AMPHENOL 83-168*

REQ.	ITEM	PART NO.	DESCRIPTION	SYMBOL
			<b>THE TECHNICAL MATERIEL CORP.</b>	
STOCK SIZE			MAMARONECK. NEW YORK	
			<i>ADAPTER</i>	
MATERIAL		WEIGHT PER PC.		
TYPE & TEMPER			<i>PL 100</i>	<i>W.D.</i>
DRAWN		ELEC. DES. APP.	MECH. DES. APP.	
<i>W.B.</i>			<i>W.D.</i>	
HEAT TREAT. SPEC.		CHECKED	FINAL APPROVAL	
FINISH & SPEC. NO.			<i>UG-176/U</i>	

ISSUE	ITEM	CHANGED FROM	DATE	CN. NO.	DRAFTS	CHECKER	ENG. APP.
TOLERANCES					SCALE		
ALL OTHERS	DEC. DIM. $\pm$ FRAC. DIM. $\pm$ ANGULAR DIM. $\pm$		DRILL, PUNCH, COMMERCIAL STOCK SIZES AND MANUFACTURERS TOLERANCES ARE NOT INCLUDED.				