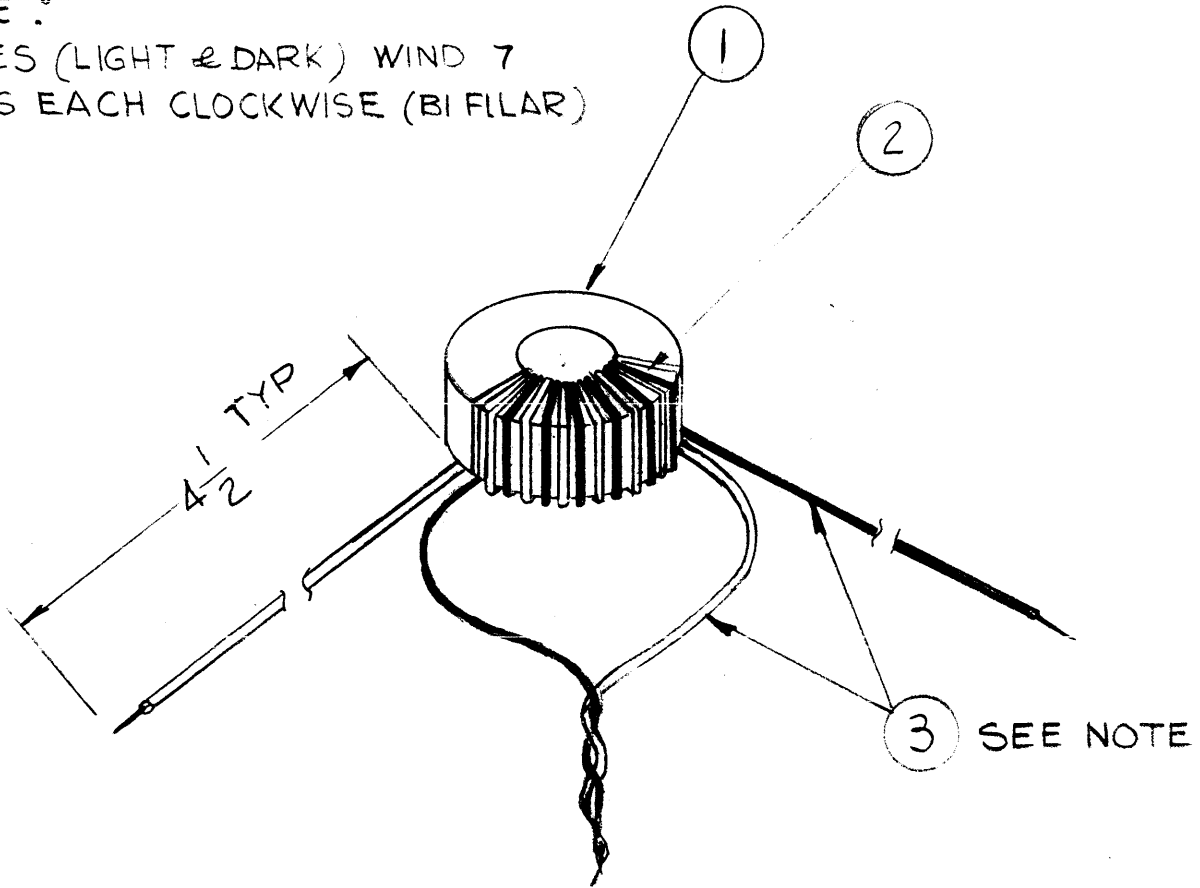


APPLICATION			REVISIONS						
QTY	MODEL USED ON	ASS'Y NO.	LTR	DESCRIPTION	DATE	E.M.N.NO	DRAFT	CHKD	APPD
1	TMA-1K	BMA-520	X	EXP. RELEASE					
			X1	ITEM 1 WAS CI128-1 6 TURNS NOW 7				CDL	
			Ø	ORIG RELEASE FOR PROD	3/13/75			Q	

NOTE :
2 WIRES (LIGHT & DARK) WIND 7
TURNS EACH CLOCKWISE (BI FILAR)



X	4	GL 130	DUCO	
X	3	WI 125-11	WIRE, ELEC. MAG #26	
X	2	TA 108-1	TAPE	
1	1	CI 115	CORE	

UNLESS OTHERWISE SPECIFIED
DIMENSIONS ARE IN INCHES
AND INCLUDE CHEMICALLY APPLIED
OR PLATED FINISHES

REQ'D	ITEM	PART NUMBER	DESCRIPTION	SYM.
-------	------	-------------	-------------	------

LIST OF MATERIAL

DECIMALS	FRACTIONS
.X ± .05	1/64
.XX ± .01	ANGLES
.XXX ± .005	0° - 30°

FINAL APPROVAL *[Signature]* DATE 3/13/75

THE TECHNICAL MATERIEL CORP.
MAMARONECK, NEW YORK

MATERIAL —

MECH. DES. F. IANNUZZI DATE 2-7-75

FINISH —

ELECT. DES. DATE

CHECKED F. IANNUZZI DATE

DRAWN G. DELUCIA DATE

TRANSFORMER, R.F.

NOTICE TO PERSONS RECEIVING THIS DRAWING
THE TECHNICAL MATERIEL CORPORATION claims proprietary right in the material disclosed hereon. This drawing is issued in confidence for engineering information only and may not be reproduced or used to manufacture anything shown hereon without permission from THE TECHNICAL MATERIEL CORPORATION to the user. This drawing is loaned for mutual assistance and is subject to recall at any time.

SIZE A	CODE IDENT. NO. 82679	DWG NO. TZ 236	ISSUE Ø
SCALE #		SHEET	OF