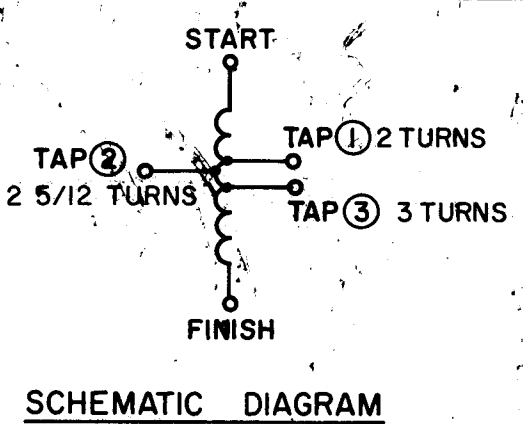
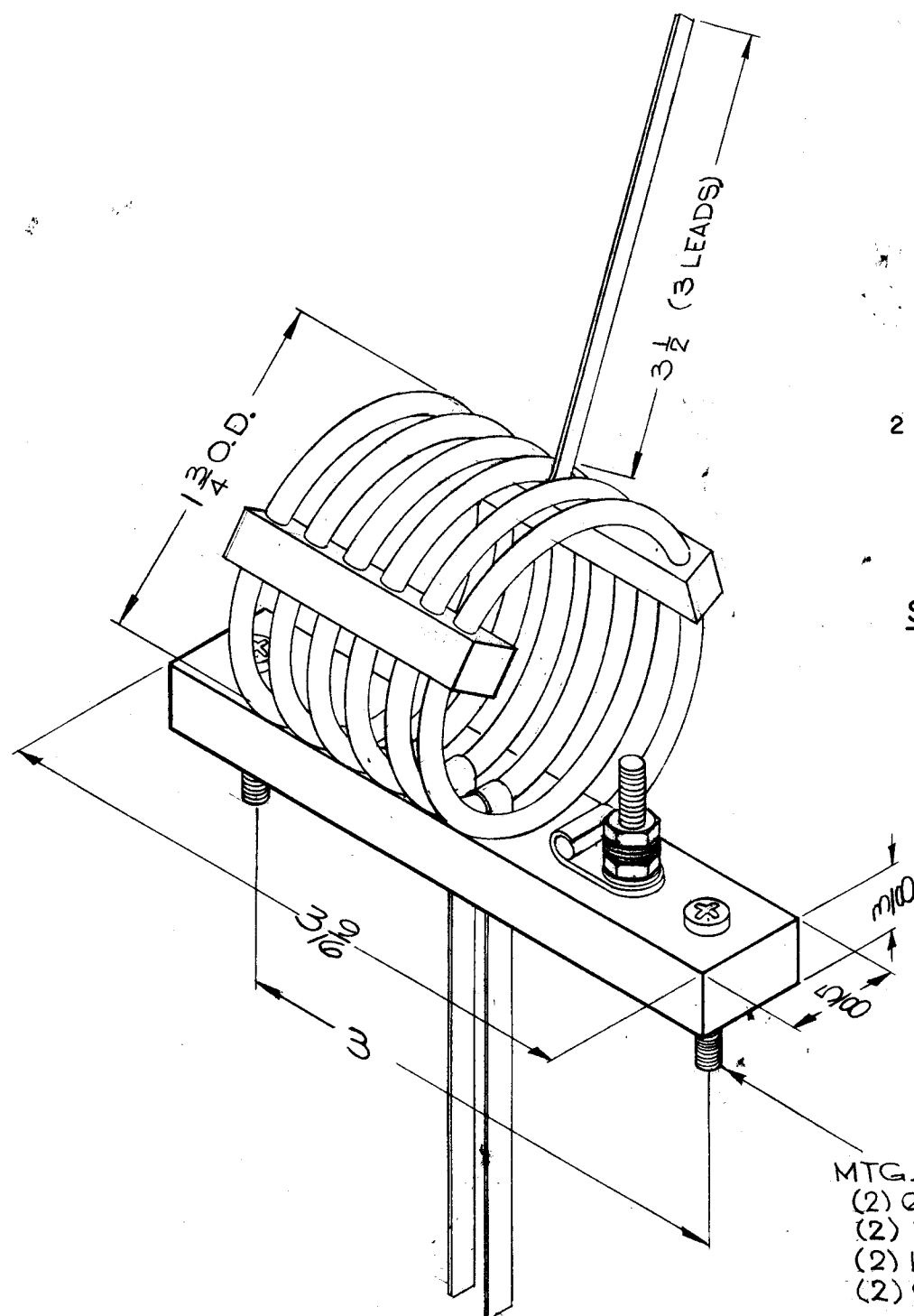


SYMBOL	FUNCTION	OPER. FREQ.	USED ON	QUAN.
T1402	FT TANK	16 to 32 MC	AX-412	1

REVISIONS						
SYM	DESCRIPTION	DATE	E.M.N. NO.	DRAFT	CHKD	APPD
A	CLERICAL CHANGE	8.24.64		hB	@	

TZ-123



SCHEMATIC DIAGRAM

WINDING DATA

WINDING NO. 1
 NOMINAL INDUCTANCE: 1.21 uhy ± .12 uhy
 NO. OF TURNS: 6
 NO. OF TAPS: 3
 NO. OF TURNS TAPPED: TAP 1 AT 2 TURNS, TAP 2 AT 2 5/12 TURNS, TAP 3 AT 3 TURNS.

COIL FORM DATA
 CELLULOSE ACETATE SUPPORT BARS (2)

TERMINALS
 QUAN.: 2 QUAN.: 3
 TYPE: SCREW TYPE: WIRE LEAD

ELECTRICAL SPECIFICATIONS:
 INDUCTANCE L: 1.21 uhy ± .12 uhy
 Q - GREATER THAN 375
 F - 7.9 MC
 D.C. RESISTANCE: NOT SPECIFIED

- MTG. HDWR
 (2) 6-32 x 7/8 Lg. B.H. SCREWS
 (2) FLAT WASHERS
 (2) LOCK WASHERS (INT.)
 (2) 6-32 HEX NUTS

1	TTR-10	AX-412
Q'TY./UNIT	MODEL USED ON	ASS'Y. NO.
DO NOT SCALE	C S401-47	4A-3210

NOTES

THE CONTENTS OF THIS DRAWING ARE THE EXCLUSIVE PROPERTY OF THE TECHNICAL MATERIEL CORP. ITS UNAUTHORIZED USE OR REPRODUCTION IN WHOLE OR IN PART IS STRICTLY FORBIDDEN.

REQ'D.	ITEM	PART NUMBER	DESCRIPTION	SYMBOL
KOHN LIST OF MATERIAL				
MATERIAL		THE TECHNICAL MATERIEL CORP. MAMARONECK, NEW YORK		
FINISH		TRANSFORMER, R.F., FT 16-32 MC.		
UNLESS OTHERWISE SPECIFIED DIMENSIONS ARE IN INCHES AND INCLUDE CHEMICALLY APPLIED OR PLATED FINISHES		DRAWN <i>R. Kohn</i> CHECKED <i>J. De</i> ELECT. DES. <i>R. KOHN</i> MECH. DES. <i>R. KOHN</i>	DATE 10-22-63 DATE 11/6/63 DATE 11-7-63 DATE 11-7-63	FINAL APPROVAL <i>BP</i> TZ-123 SHEET
DECIMALS .X ± .05 .XX ± .01 .XXX ± .005		FRACTIONS ± 1/64 ANGLES ± 0° 30'	A REV. LTR.	