

TMC PART NO.	SYMBOL	FUNCTION	OPER. FREQ.	REQ. PER UNIT	USED ON			TT 200 B
					MODEL	ASS'Y. NO.	DATE	
TT 200	T641		1 MC	1	LFS-1	A 3310		

TRANSFORMER, R.F., TUNED

WINDING DATA:

WINDING NO. 1
 NOM. IND. = 17.5 ± 10% μH WITH ADJ. CORE OUT.
 NO. OF TURNS = 68
 DC RESISTANCE = 1.2 - 1.4
WINDING NO. 2
 NOM. IND. = NOT RATED
 NO. OF TURNS = 10
 NO. OF TAPS = 1
 NO. OF TURNS TAPPED = 5

COIL FORM DATA:

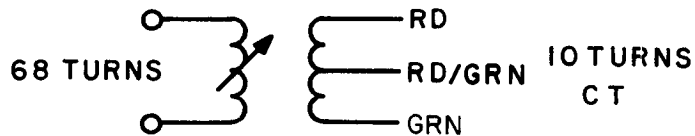
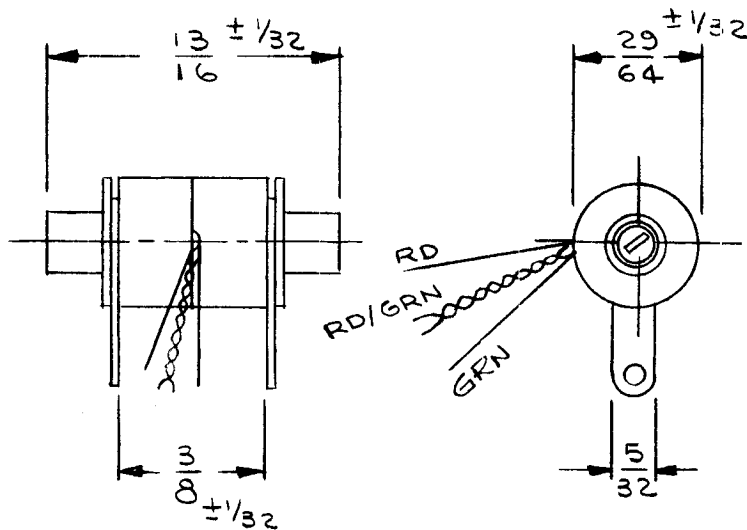
MATERIAL = MYLAR

TUNING DEVICE:

QUANTITY = 1
 TYPE = ADJUSTABLE FERRITE CORE

TERMINALS :

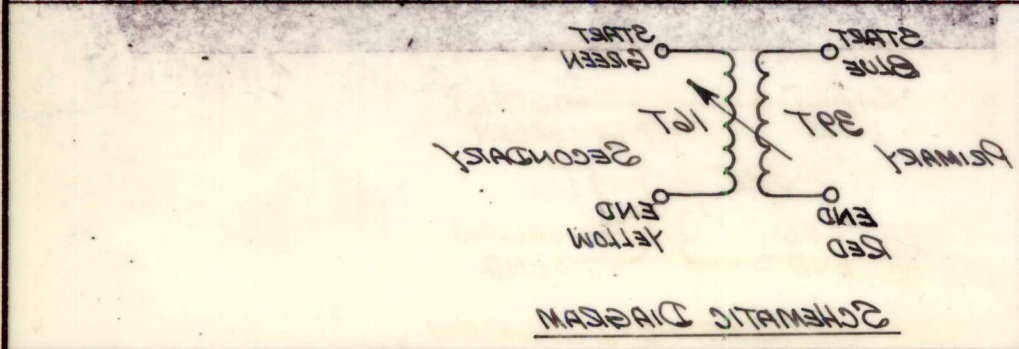
QUANTITY = 2
 TYPE = (2) SOLDER LUG
 (3) 1-1/4" MIN. LEADS



SCHEMATIC DIAGRAM

REQ. ITEM	PART NO.	M. GELLMAN	DESCRIPTION	SYMBOL									
B	CHG RD TO GRN	11/30/71	20434 GE	AD									
A	ON WINDING DATA NOM. IND WAS 14.2 μH ± 10%	5-14-65	14086 CJL	JL									
Q	ORIGINAL RELEASE FOR PRODUCTION	7-27-64	Q G.D.L.										
SYM	DESCRIPTION	DATE	CH. NO.	DRAFTS	CHECKER	ENG. APP.	MATERIAL						
UNLESS OTHERWISE SPECIFIED DIMENSIONS ARE IN INCHES AND INCLUDE CHEMICALLY APPLIED OR PLATED FINISHES							SCALE	NONE	J. LESHINSKI				
DECIMALS .X ± .05 .XX ± .01 .XXX ± .005							FRACTIONS ± 1/64 ANGLES ± 0° 30'	CODE	A	4A 3361			
TOLERANCES									TYPE & TEMPER	HEAT TREAT. SPEC.	DRAWN	CHECKED	FINAL APPROVAL
													TT 200 B
									FINISH & SPEC. NO.	ELEC. DES. APP.	MECH. DES. APP.		

DECIMALS XXX ± .002 XX ± .01 X ± .02	TOLERANCES ± 0° 30' FRACTIONS ± 1/64	CODE A	2A-3822	TYPE & TEMPER HEAT TREAT. SPEC.	DRAWN H. Austin	CHECKED DOK	FINAL APPROVAL [Signature]	CHEMICALLY APPLIED OR PLATED FINISHES	UNLESS OTHERWISE SPECIFIED DIMENSIONS ARE IN INCHES AND INCLUDE	SCALE 1/16"	SYM	DESCRIPTION ORIGINAL RELEASE FOR PRODUCTION	DATE	CH. NO.	DRAFTS	CHECKER	ENG. APP.	MATERIAL	STOCK SIZE	PART NO.	DESCRIPTION	SYMBOL
													2-19-62	4	4							

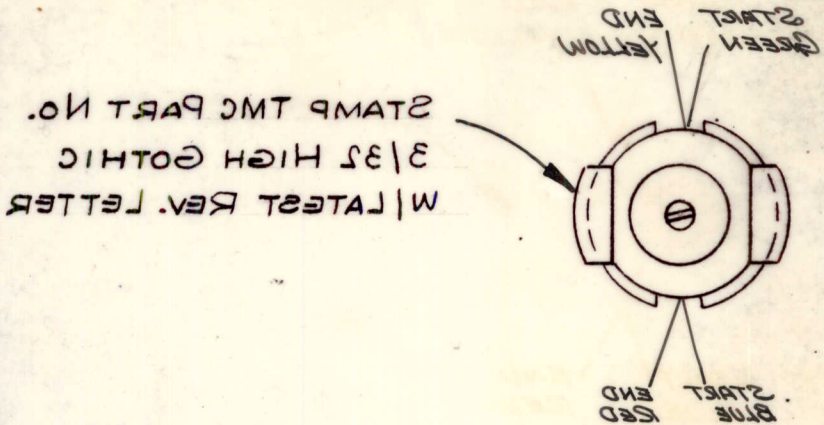
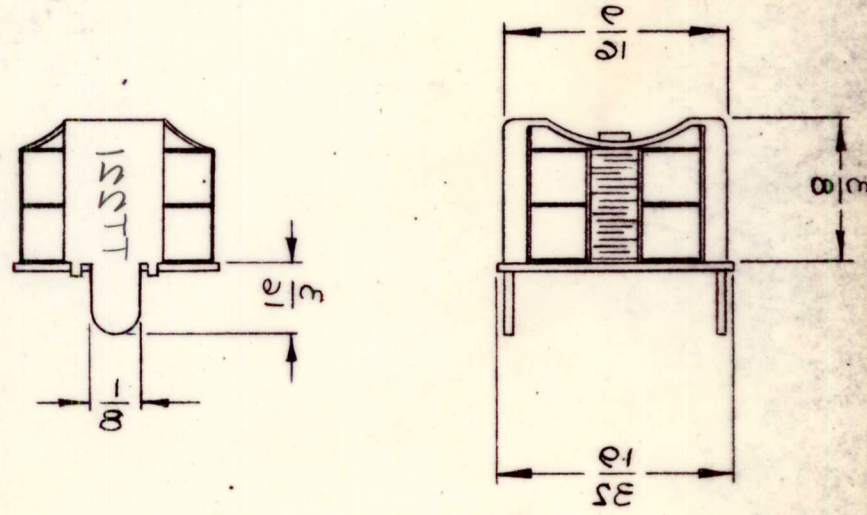


CORE & SLUG: POWDERED IRON
MATERIAL:

RETAINERS, TOP: NICKEL SILVER 1/4
RETAINERS, BOTTOM: BRASS CAD PLATED
PRIMARY: 39
SECONDARY: 16
TURNS

MECHANICAL SPEC.

"0" (PRIMARY) @ 100 KCS: > 500
SECONDARY: NOT RATED
PRIMARY: 250mV + 5-5mV
INDUCTANCE @ 750 KCS
OPERATING FREQUENCY:
ELECTRICAL SPECS.
(WITH SLUG INSERTED)

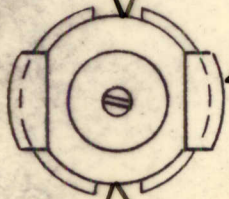


LATEST REV. LETTER
3/32 HIGH GOTHIC
STAMP TMC PART NO.

REG. PER UNIT	2	MODEL	LEA-1	ASSY. NO.	A3718	DATE	2-19-62	USED ON	TT221
---------------	---	-------	-------	-----------	-------	------	---------	---------	-------

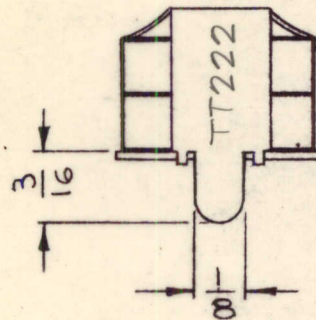
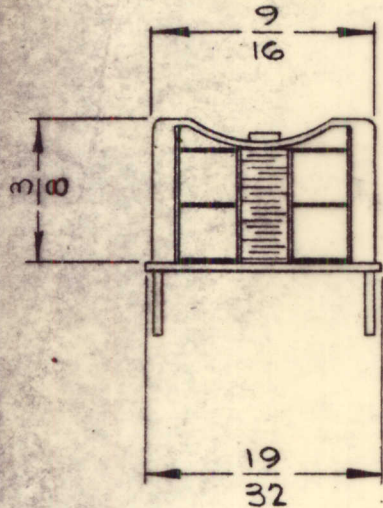
SECONDARY LEADS

START GREEN END YELLOW



START BLUE END RED

STAMP TMC PART NO.
3/32 HIGH GOTHIC
W/LATEST REV. LETTER

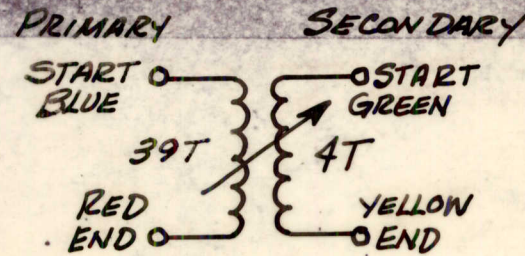


REQ. PER UNIT	USED ON			TT222	⊕
	MODEL	ASSY. NO.	DATE		
2	LFCA-1	A3719	5-20-65		

ELECTRICAL SPECS.
(WITH SLUG INSERTED)
OPERATING FREQUENCY:
INDUCTANCE @ 790 KCS
PRIMARY: 250μh + ε - 5μh
SECONDARY: NOT RATED
"Q" (PRIMARY) @ 100 KCS: > 580

MECHANICAL SPEC.

TURNS
PRIMARY: 39
SECONDARY: 4
RETAINER, BOTTOM: BRASS CAD PLATED
RETAINER, TOP: NICKEL SILVER H/H
MATERIAL:
CORE & SLUG: POWDERED IRON

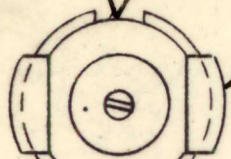


SCHEMATIC DIAGRAM

				REQ. ITEM	PART NO.	POSE	DESCRIPTION	SYMBOL
				STOCK SIZE		THE TECHNICAL MATERIEL CORP. MAMARONECK, NEW YORK		
ORIGINAL RELEASE FOR PRODUCTION				6-2065	HA	TRANSFORMER, RF, ADJUSTABLE		
SYM	DESCRIPTION	DATE	CH. NO.	DRAFTS	CHECKER	ENG. APP.		
UNLESS OTHERWISE SPECIFIED DIMENSIONS ARE IN INCHES AND INCLUDE CHEMICALLY APPLIED OR PLATED FINISHES				SCALE		H. Austin		
DECIMALS .X ± .05 .XX ± .01 .XXX ± .005				FRACTIONS ± 1/64 ANGLES ± 0° 30'		CODE A	2A-3826	
TOLERANCES				FINISH & SPEC. NO.		ELEC. DES. APP.	MECH. DES. APP.	TT222 ⊕

SECONDARY LEADS

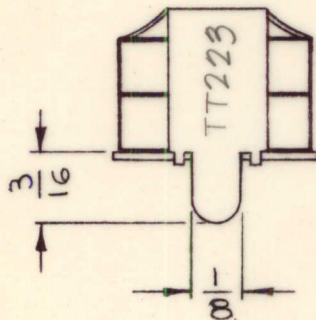
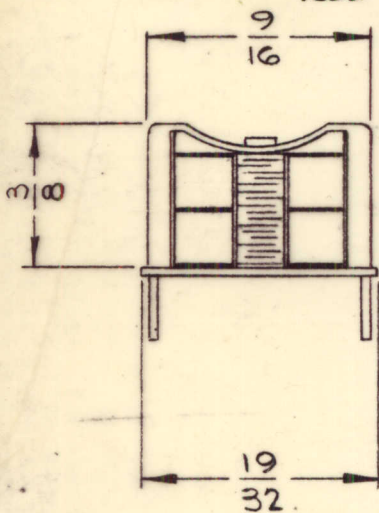
START GREEN
END - YELLOW



STAMP TMC PART NO.
3/32 HIGH GOTHIC
W/ LATEST REV. LETTER

PRIMARY LEADS

START BLUE
END RED



REQ. PER UNIT	USED ON			TT223	⌀
	MODEL	ASSY. NO.	DATE		
1	LFCA-1	A3723	5-20-65		

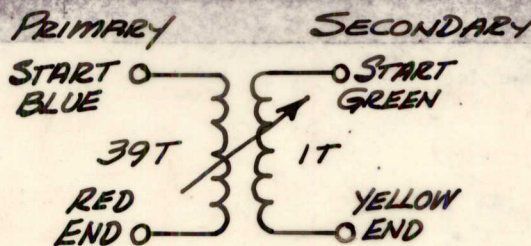
ELECTRICAL SPECS.
(WITH SLUG INSERTED)

OPERATING FREQUENCY:
INDUCTANCE @ 790 KCS
PRIMARY: 250 μ h + ϵ - 5 μ h
SECONDARY: NOT RATED
"Q" (PRIMARY) @ 100 KCS: > 560

MECHANICAL SPEC.

TURNS
PRIMARY: 39
SECONDARY: 1
RETAINER, BOTTOM: BRASS CAD PLATED
RETAINER, TOP: NICKEL SILVER H/H

MATERIAL:
CORE & SLUG: POWDERED IRON

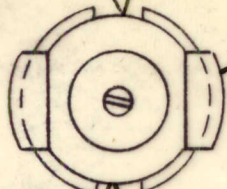


SCHEMATIC DIAGRAM

							REQ. ITEM	PART NO.	POSE	DESCRIPTION	SYMBOL		
									THE TECHNICAL MATERIEL CORP. MAMARONECK, NEW YORK				
							STOCK SIZE		TRANSFORMER, RF, ADJUSTABLE				
⌀ ORIGINAL RELEASE FOR PRODUCTION 5/20/65 M HLA							MATERIAL						
SYM	DESCRIPTION	DATE	CH. NO.	DRAFTS	CHECKER	ENG. APP.	TYPE & TEMPER		HEAT TREAT. SPEC.	DRAWN	CHECKED	FINAL APPROVAL	
UNLESS OTHERWISE SPECIFIED DIMENSIONS ARE IN INCHES AND INCLUDE CHEMICALLY APPLIED OR PLATED FINISHES		SCALE									H. AUSTIN	ACB	MM May 25/65
DECIMALS .X ± .05 .XX ± .01 .XXX ± .005	TOLERANCES	FRACTIONS ± 1/64 ANGLES ± 0° 30'	CODE A	2A-3827			FINISH & SPEC. NO.		ELEC. DES. APP.		TT223		⌀

SECONDARY LEADS

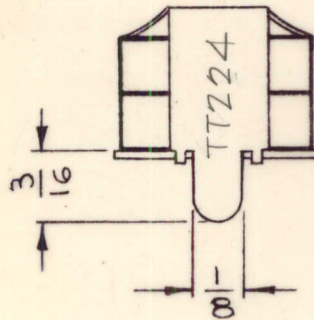
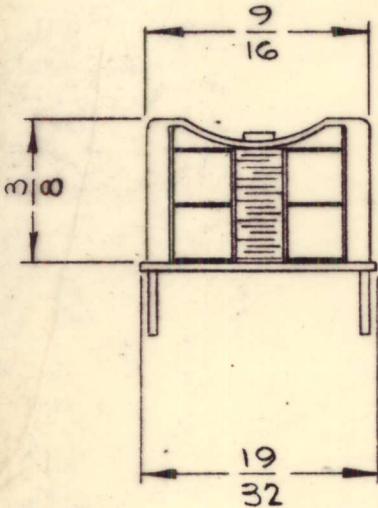
START GREEN
END YELLOW



STAMP TMC PART NO.
3/32 HIGH GOTHIC
W/ LATEST REV. LETTER

PRIMARY LEADS

START BLUE
END RED



REQ. PER UNIT	USED ON			TT224	Ø
	MODEL	ASS'Y. NO.	DATE		
1	LFCA-1	A3719	5-20-65		

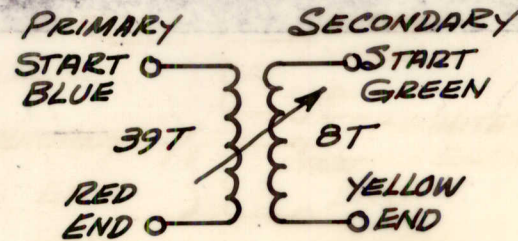
ELECTRICAL SPECS.
(WITH SLUG INSERTED)

OPERATING FREQUENCY:
INDUCTANCE @ 790 KCS
PRIMARY: 250 μ h + ϵ - 5 μ h
SECONDARY: NOT RATED
"Q" (PRIMARY) @ 100KCS: > .520

MECHANICAL SPEC.

TURNS
PRIMARY: 39
SECONDARY: 8
RETAINER, BOTTOM: BRASS CAD PLATED
RETAINER, TOP: NICKEL SILVER H/H

MATERIAL:
CORE & SLUG: POWDERED IRON

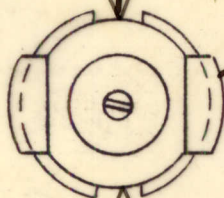


SCHEMATIC DIAGRAM

						REQ. ITEM	PART NO.	POSE	DESCRIPTION	SYMBOL		
									THE TECHNICAL MATERIEL CORP. MAMARONECK, NEW YORK			
							STOCK SIZE		TRANSFORMER, RF, ADJUSTABLE			
							MATERIAL					
Ø ORIGINAL RELEASE FOR PRODUCTION	5/20/65	AA	HLA					H. AUSTIN	JCB	5/25/65		
SYM	DESCRIPTION	DATE	CH. NO.	DRAFTS	CHECKER	ENG. APP.						
UNLESS OTHERWISE SPECIFIED DIMENSIONS ARE IN INCHES AND INCLUDE CHEMICALLY APPLIED OR PLATED FINISHES		SCALE										
DECIMALS .X ± .05 .XX ± .01 .XXX ± .005		FRACTIONS ± 1/64 ANGLES ± 0° 30'		TOLERANCES		CODE	2A-3828					
								TYPE & TEMPER	HEAT TREAT. SPEC.	DRAWN	CHECKED	FINAL APPROVAL
								FINISH & SPEC. NO.	ELEC. DES. APP.	MECH. DES. APP.	TT224	Ø

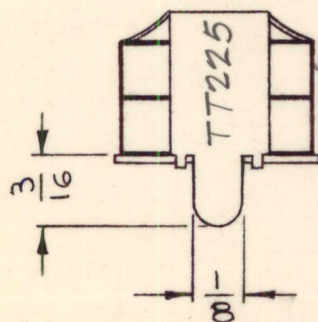
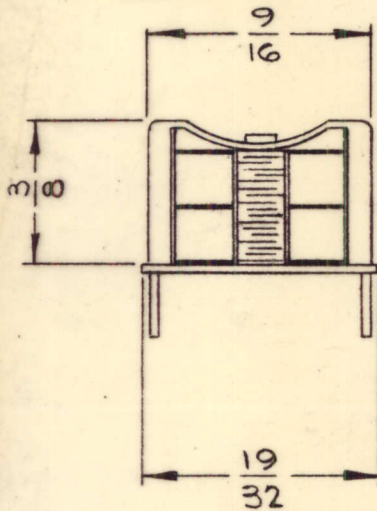
SECONDARY LEADS

TAP WHITE
START YELLOW END GREEN



STAMP TMC PART NO.
3/32 HIGH GOthic
W/LATEST REV. LETTER

START BLUE END RED



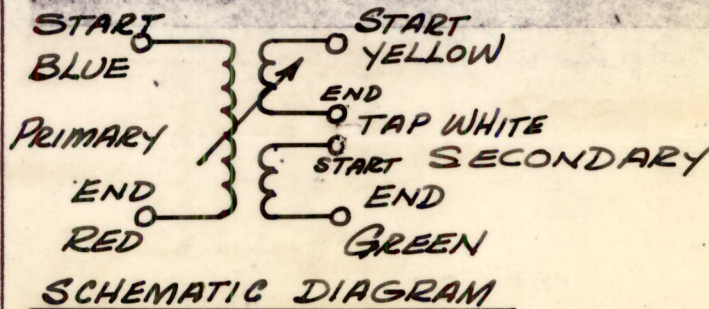
REQ. PER UNIT	USED ON			TT225	Ø
	MODEL	ASS'Y. NO.	DATE		
1	LFCA-1	A3719	5-20-65		

ELECTRICAL SPECS.
(WITH SLUG INSERTED)
OPERATING FREQUENCY:
INDUCTANCE @ 100KC
PRIMARY: 250 μ h + ϕ - 5 μ h
SECONDARY: NOT RATED
"Q" (PRIMARY) @ 100KCS: > 280

MECHANICAL SPEC.

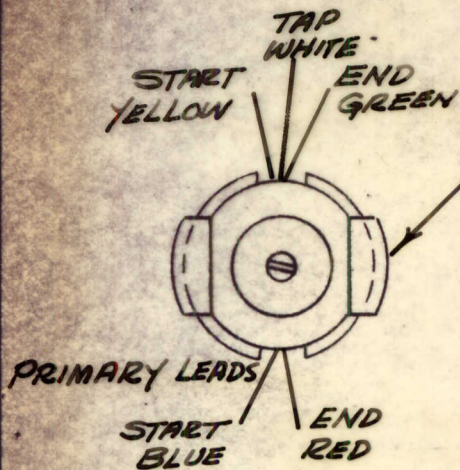
TURNS
PRIMARY: 39
SECONDARY: 32 (BIFILAR)
RETAINER, BOTTOM: BRASS CAD PLATED
RETAINER, TOP: NICKEL SILVER H/H

MATERIAL:
CORE & SLUG: POWDERED IRON

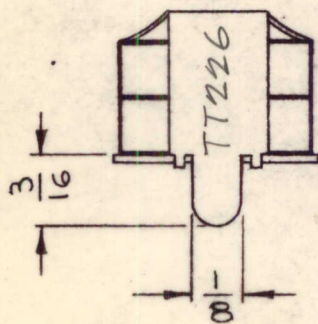
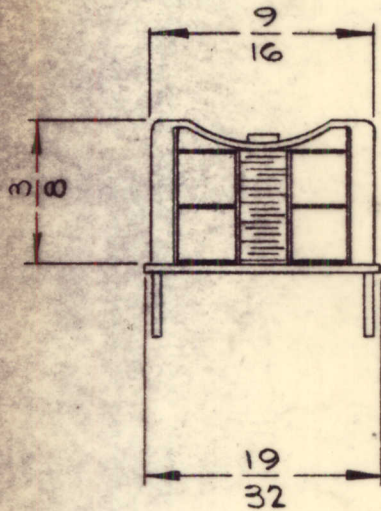


REQ. ITEM	PART NO.	POSE	DESCRIPTION	SYMBOL													
			THE TECHNICAL MATERIEL CORP. MAMARONECK, NEW YORK														
			TRANSFORMER, RF, ADJUSTABLE														
Ø ORIGINAL RELEASE FOR PRODUCTION	5/20/65	MA	HLB														
SYM	DESCRIPTION	DATE	CH. NO.	DRAFTS	CHECKER	ENG. APP.	MATERIAL										
UNLESS OTHERWISE SPECIFIED DIMENSIONS ARE IN INCHES AND INCLUDE CHEMICALLY APPLIED OR PLATED FINISHES							SCALE			H. AUSTIN	PCB	J					
DECIMALS .x ± .05 .xx ± .01 .xxx ± .005							TOLERANCES	FRACTIONS ± 1/64 ANGLES ± 0° 30'	CODE A	2A-3853			TYPE & TEMPER	HEAT TREAT. SPEC.	DRAWN	CHECKED	FINAL APPROVAL
										PCB							
															TT225	Ø	

SECONDARY LEADS



STAMP TMC PART NO.
3/32 HIGH GOTHIC
W/LATEST REV. LETTER



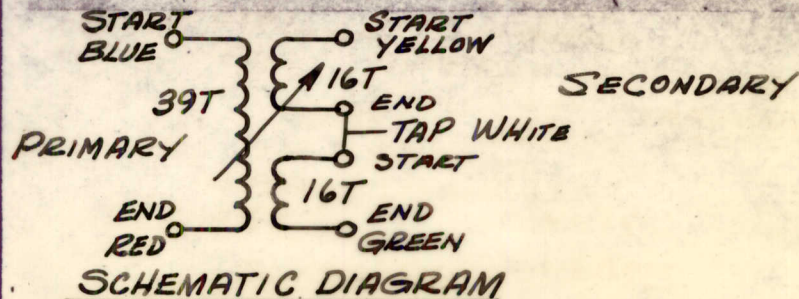
REQ. PER UNIT	USED ON			TT226
	MODEL	ASS'Y. NO.	DATE	
2	LFCA-1	A-3721	5-20-65	

ELECTRICAL SPECS.
(WITH SLUG INSERTED)
OPERATING FREQUENCY:
INDUCTANCE @ 100 KCS
PRIMARY: 315 μ h + ϵ - 8 μ h
SECONDARY: NOT RATED
"Q" (PRIMARY) @ 100 KCS: > 280

MECHANICAL SPEC.

TURNS
PRIMARY: 39
SECONDARY: 16 (BIFILAR)
RETAINER, BOTTOM: BRASS CAD PLATED
RETAINER, TOP: NICKEL SILVER H/H

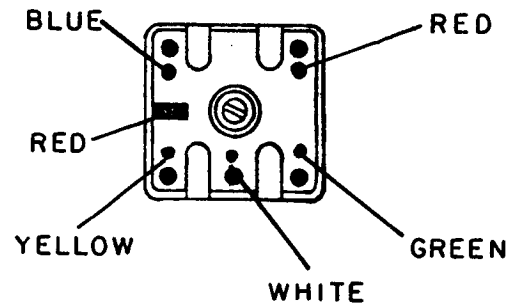
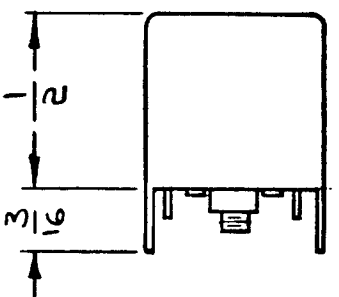
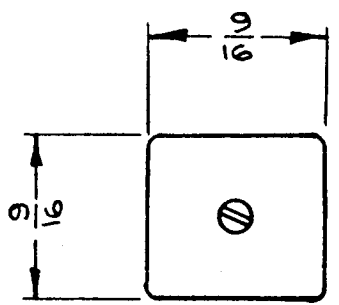
MATERIAL:
CORE & SLUG: POWDERED IRON



REQ. ITEM	PART NO.	POSE	DESCRIPTION	SYMBOL
			THE TECHNICAL MATERIEL CORP. MAMARONECK, NEW YORK	
	STOCK SIZE		TRANSFORMER, RF, ADJUSTABLE	
	MATERIAL			
	TYPE & TEMPER	HEAT TREAT. SPEC.	DRAWN	CHECKED
			H. Austin	QCB
	FINISH & SPEC. NO.	ELEC. DES. APP.	MECH. DES. APP.	TT226

SYM	DESCRIPTION	DATE	CH. NO.	DRAFTS	CHECKER	ENG. APP.
Ø	ORIGINAL RELEASE FOR PRODUCTION.	5/20/65	AA	HCA		
UNLESS OTHERWISE SPECIFIED DIMENSIONS ARE IN INCHES AND INCLUDE CHEMICALLY APPLIED OR PLATED FINISHES		SCALE				
DECIMALS .X ± .05 .XX ± .01 .XXX ± .005	TOLERANCES	FRACTIONS ± 1/64 ANGLES, ± 0° 30'	CODE A	2A-3854		

REQ. PER UNIT	USED ON			TT229 \emptyset
	MODEL	ASS'Y. NO.	DATE	
1	VLRB-1	A3655	4-13-65	

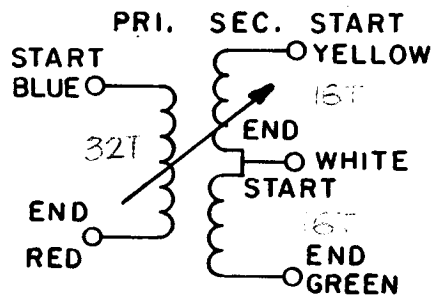


**ELECTRICAL SPECS.
(WITH SLUG INSERTED)**

OPERATING FREQUENCY:
 INDUCTANCE @ 7.9 MC
 PRIMARY: 7.96 UH \pm .25 UH
 SECONDARY: NOT RATED
 "Q" (PRIMARY) @ 6 MC : > 30

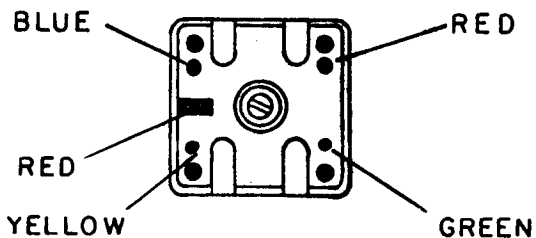
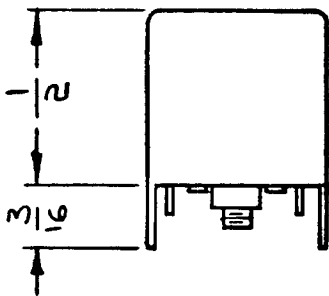
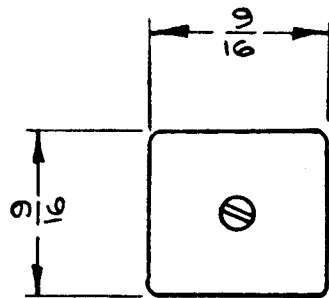
MECHANICAL SPEC.

TURNS
 PRIMARY: 32
 SECONDARY: 16 (BIFILAR)
 COLOR CODE: RED
 CASE: COPPER CAN
 CASE FINISH: TIN-PLATED
 QUANTITY TERM: 6
 MATERIAL:
 CORE & SLUG: POWDERED IRON



SCHEMATIC

REQ.	ITEM	PART NO.	DESCRIPTION	SYMBOL									
\emptyset	ORIGINAL RELEASE FOR PRODUCTION	4/13/65	THE TECHNICAL MATERIEL CORP. MAMARONECK, NEW YORK										
X	EXPER. RELEASE	4/13/65	TRANSFORMER, RF, ADJUSTABLE										
SYM	DESCRIPTION	DATE	CH. NO.	DRAFTS	CHECKER	ENG. APP.	MATERIAL	TYPE & TEMPER	HEAT TREAT. SPEC.	DRAWN	CHECKED	FINAL APPROVAL	
UNLESS OTHERWISE SPECIFIED DIMENSIONS ARE IN INCHES AND INCLUDE CHEMICALLY APPLIED OR PLATED FINISHES		SCALE		CODE		TOLERANCES		FINISH & SPEC. NO.		ELEC. DES. APP.		MECH. DES. APP.	
				A		2-A3903						TT229 \emptyset	



REQ. PER UNIT	USED ON			TT230 \emptyset
	MODEL	ASSY. NO.	DATE	
1	VLRB-1	A3655	4-13-65	

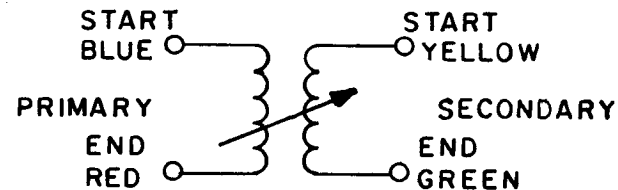
ELECTRICAL SPECS.
(WITH SLUG INSERTED)

OPERATING FREQUENCY:
INDUCTANCE @ 7.9 MC
PRIMARY: 7.96 UH \pm .25 UH
SECONDARY: NOT RATED
"Q" (PRIMARY) @ 6 MC : > 50

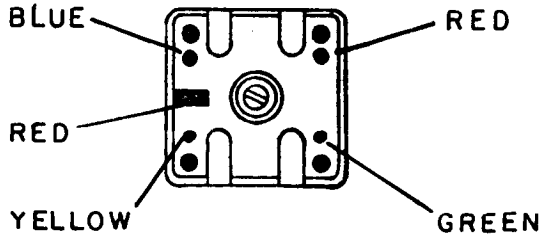
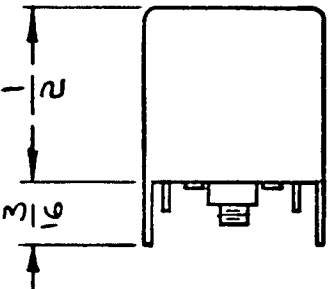
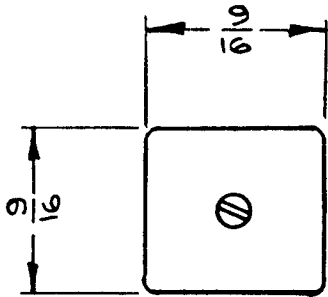
MECHANICAL SPEC.

TURNS
PRIMARY: 32
SECONDARY: 10
COLOR CODE: RED
CASE: COPPER CAN
CASE FINISH: TIN-PLATED
QUANTITY TERM: 4
MATERIAL:
CORE & SLUG: POWDERED IRON

SCHEMATIC



REQ.	ITEM	PART NO.	DESCRIPTION				SYMBOL	
\emptyset	ORIG. JAL RELEASE FOR PRODUCTION	4/30/65	M				THE TECHNICAL MATERIEL CORP. MAMARONECK, NEW YORK	
X	EXPER. RELEASE	4/13/65	X					TRANSFORMER, RF, ADJUSTABLE
SYM	DESCRIPTION	DATE	CH. NO.	DRAFTS	CHECKER	ENG. APP.		
UNLESS OTHERWISE SPECIFIED DIMENSIONS ARE IN INCHES AND INCLUDE CHEMICALLY APPLIED OR PLATED FINISHES		SCALE						
DECIMALS .X \pm .05 .XX \pm .01 .XXX \pm .005	TOLERANCES	FRACTIONS \pm 1/64 ANGLES \pm 0° 30'	CODE A	2-A3904				
FINISH & SPEC. NO.		TYPE & TEMPER		HEAT TREAT. SPEC.		DRAWN	CHECKED	FINAL APPROVAL
						G. Leman	J. B.	TT230 \emptyset



REQ. PER UNIT	USED ON			TT231	Ø
	MODEL	ASSY. NO.	DATE		
1	VLRB-1	A 3655	4-13-65		

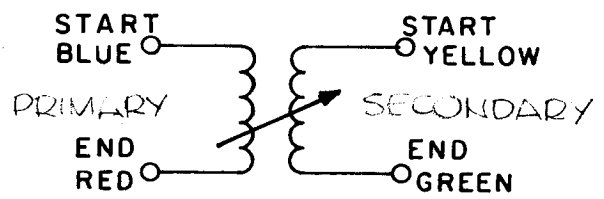
ELECTRICAL SPECS.
(WITH SLUG INSERTED)

OPERATING FREQUENCY:
INDUCTANCE @ 7.9 MC
PRIMARY: 6.24 UH ± .5UH
SECONDARY: NOT RATED
"Q" (PRIMARY) @ 6 MC : > 60

MECHANICAL SPEC.

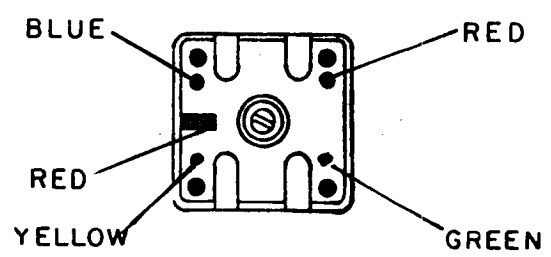
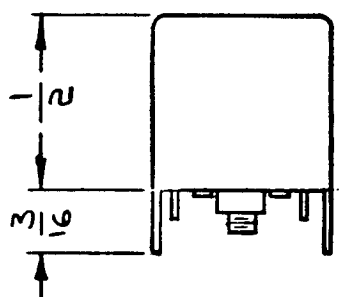
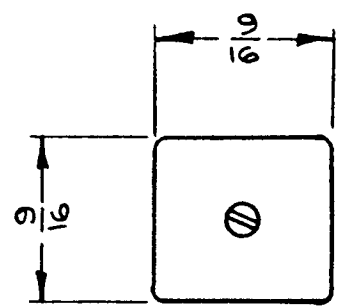
TURNS
PRIMARY: 28
SECONDARY: 5
COLOR CODE: RED
CASE: COPPER CAN
CASE FINISH: TIN-PLATED
QUANTITY TERM: 4
MATERIAL:
CORE & SLUG: POWDERED IRON

SCHEMATIC



SYM	DESCRIPTION	DATE	CH. NO.	DRAFTS	CHECKER	ENG. APP.	REQ. ITEM	PART NO.	DESCRIPTION	SYMBOL	
Ø	ORIGINAL RELEASE FOR PRODUCTION	4/30/65	M						THE TECHNICAL MATERIEL CORP. MAMARONECK, NEW YORK	TRANSFORMER, RF, ADJUSTABLE	
X	EXPER. RELEASE	4/13/65	X								
UNLESS OTHERWISE SPECIFIED DIMENSIONS ARE IN INCHES AND INCLUDE CHEMICALLY APPLIED OR PLATED FINISHES							SCALE				
DECIMALS .X ± .05 .XX ± .01 .XXX ± .005	TOLERANCES	FRACTIONS ± 1/64 ANGLES ± 0° 30'	CODE	A 2-A3905			TYPE & TEMPER	HEAT TREAT. SPEC.	DRAWN	CHECKED	FINAL APPROVAL
										TT231 Ø	

REQ. PER UNIT	USED ON			TT 232 \emptyset
	MODEL	ASSY. NO.	DATE	
1	VLRB-1	A3655	4-13-65	



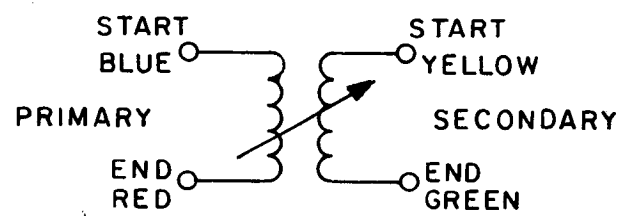
ELECTRICAL SPECS.
(WITH SLUG INSERTED)

OPERATING FREQUENCY:
INDUCTANCE @ 2.5 MC
PRIMARY: 10.1 UH \pm .4 UH
SECONDARY: NOT RATED
"Q" (PRIMARY) @ 6 MC : > 55

MECHANICAL SPEC.

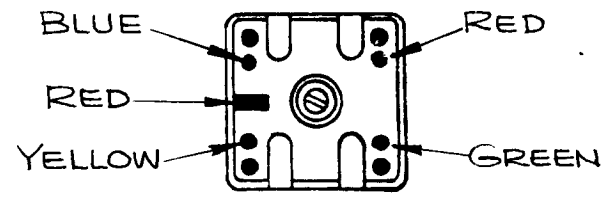
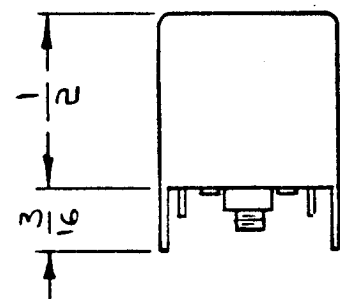
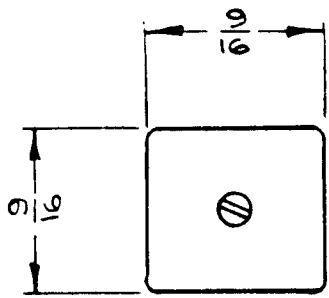
TURNS
PRIMARY: 34
SECONDARY: 11
COLOR CODE: RED
CASE: COPPER CAN
CASE FINISH: TIN-PLATED
QUANTITY TERM: 4
MATERIAL:
CORE & SLUG: POWDERED IRON

SCHEMATIC



SYM	DESCRIPTION	DATE	CH. NO.	DRAFTS	CHECKER	ENG. APP.	REQ. ITEM	PART NO.	DESCRIPTION	SYMBOL	
\emptyset	ORIGINAL RELEASE FOR PRODUCTION	4/30/65	AA						THE TECHNICAL MATERIEL CORP. MAMARONECK, NEW YORK	TRANSFORMER, RF, ADJUSTABLE	
X	EXPER. RELEASE	4/13/65	X								
UNLESS OTHERWISE SPECIFIED DIMENSIONS ARE IN INCHES AND INCLUDE CHEMICALLY APPLIED OR PLATED FINISHES							SCALE				
DECIMALS .X \pm .05 .XX \pm .01 .XXX \pm .005	TOLERANCES	FRACTIONS \pm 1/64 ANGLES \pm 0° 30'	CODE A	2-A3906			TYPE & TEMPER	HEAT TREAT. SPEC.	DRAWN G. Leman	CHECKED R/S	FINAL APPROVAL M/M... 5/4/65
							FINISH & SPEC. NO.		ELEC. DES. APP.	MECH. DES. APP.	TT 232 \emptyset

REQ. PER UNIT	USED ON			TT233	✓
	MODEL	ASSY. NO.	DATE		
1	LFSB-1	A 3791	3-15-65		

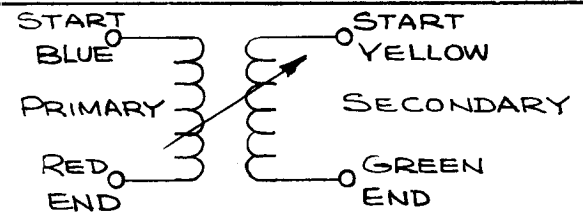


ELECTRICAL SPECS.
(WITH SLUG INSERTED)

OPERATING FREQUENCY:
 INDUCTANCE @ 7.9 MC
 PRIMARY: $8.4\mu h \pm .2\mu h$
 SECONDARY: NOT RATED
 "Q" (PRIMARY) @ 5.25 MCS : > 105

MECHANICAL SPEC.

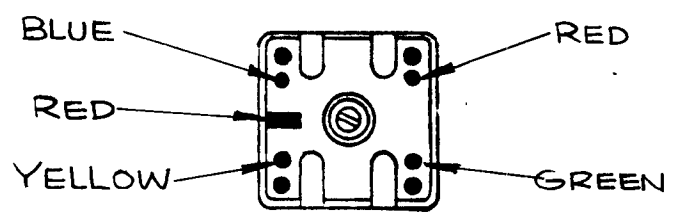
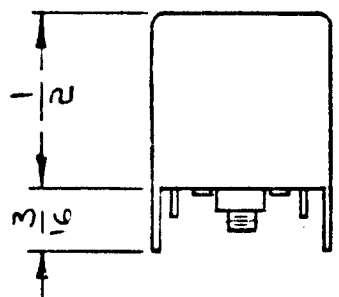
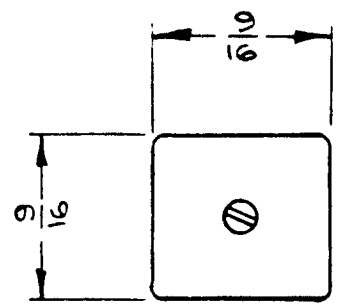
TURNS
 PRIMARY: 28
 SECONDARY: 9
 COLOR CODE: RED
 CASE: COPPER CAN
 CASE FINISH: TIN-PLATED
 QUANTITY TERM: -4
 MATERIAL:
 CORE & SLUG: POWDERED IRON



SCHEMATIC DIAGRAM

SYM	DESCRIPTION	DATE	CH. NO.	DRAFTS	CHECKER	ENG. APP.	REQ. ITEM	PART NO.	POSE	DESCRIPTION	SYMBOL
	ORIGINAL RELEASE FOR PRODUCTION	5-4-65								THE TECHNICAL MATERIEL CORP. MAMARONECK, NEW YORK	
X	EXPER. RELEASE	3-15-65	X	HLA						TRANSFORMER, RF, ADJUSTABLE	
	UNLESS OTHERWISE SPECIFIED DIMENSIONS ARE IN INCHES AND INCLUDE CHEMICALLY APPLIED OR PLATED FINISHES	SCALE									
	DECIMALS .X ± .05 .XX ± .01 .XXX ± .005	FRACTIONS ± 1/64 ANGLES ± 0° 30'	CODE A	2-A-3941					H. AUSTIN	3-29-65	FINAL APPROVAL
	TOLERANCES										TT233
											✓

REQ. PER UNIT	USED ON			TT234	Ø
	MODEL	ASS'Y. NO.	DATE		
1	LFSB-1	A3791	3-15-65		

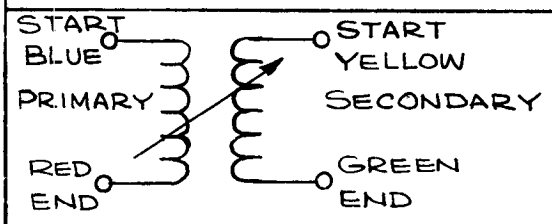


ELECTRICAL SPECS.
(WITH SLUG INSERTED)

OPERATING FREQUENCY:
 INDUCTANCE @ 7.9 Mcs
 PRIMARY: $6.5 \mu h \pm .1 \mu h$
 SECONDARY: NOT RATED
 "Q" (PRIMARY) @ 5.25 Mcs: > 115

MECHANICAL SPEC.

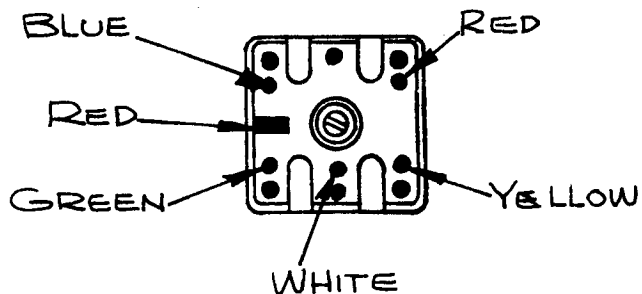
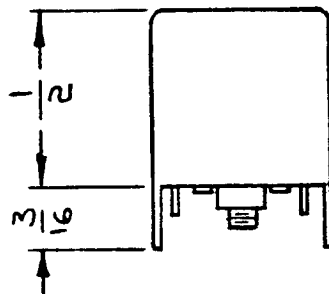
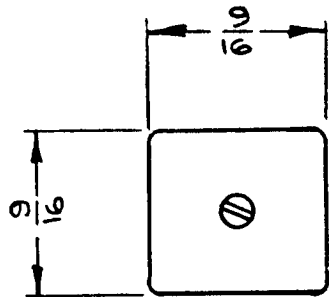
URNS
 PRIMARY: 24
 SECONDARY: 7
 COLOR CODE: RED
 CASE: COPPER CAN
 CASE FINISH: TIN-PLATED
 QUANTITY TERM: -4
 MATERIAL:
 CORE & SLUG: POWDERED IRON



SCHMATIC DIAGRAM

SYM	DESCRIPTION	DATE	CH. NO.	DRAFTS	CHECKER	ENG. APP.	REQ. ITEM	PART NO.	DESCRIPTION	SYMBOL	
Ø	ORIGINAL RELEASE FOR PRODUCTION	4-7-65							THE TECHNICAL MATERIEL CORP. MAMARONECK, NEW YORK	Ø	
X	EXPER. RELEASE	3-15-65	X	HLA				TRANSFORMER, RF, ADJUSTABLE			
	UNLESS OTHERWISE SPECIFIED DIMENSIONS ARE IN INCHES AND INCLUDE CHEMICALLY APPLIED OR PLATED FINISHES						SCALE				
	DECIMALS X ± .05 XX ± .01 XXX ± .005	FRACTIONS ± 1/64 ANGLES ± 0° 30'	CODE A	2-A-3942			TYPE & TEMPER	HEAT TREAT. SPEC.	DRAWN H. AUSTIN	CHECKED 3-29-65	FINAL APPROVAL Ø
	TOLERANCES									TT234	Ø

REQ. PER UNIT	USED ON			TT235	Ø
	MODEL	ASS'Y. NO.	DATE		
1	LFSB-1	A3791	3-18-65		

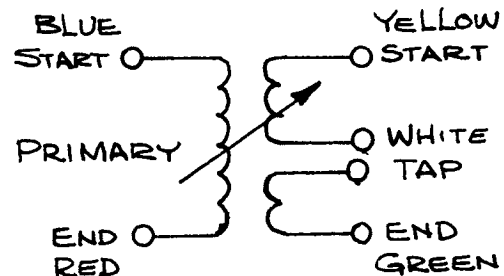


**ELECTRICAL SPECS.
(WITH SLUG INSERTED)**

OPERATING FREQUENCY:
 INDUCTANCE @ 7.9 MC
 PRIMARY: $8.3 \mu h \pm .8 \mu h$
 SECONDARY: NOT RATED
 "Q" (PRIMARY) @ 5.25 MC : > 40

MECHANICAL SPEC.

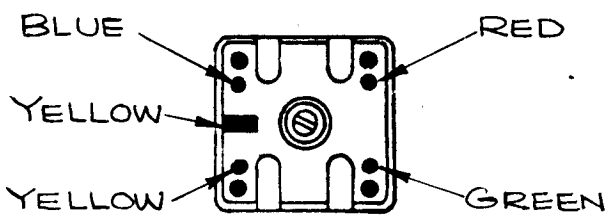
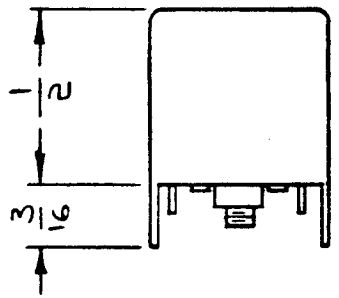
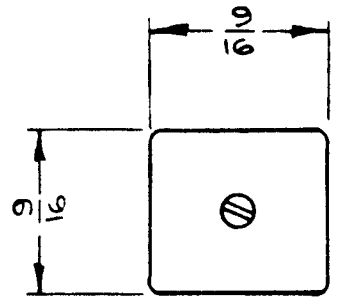
TURNS
 PRIMARY: 29
 SECONDARY: 58
 COLOR CODE: RED
 CASE: COPPER CAN
 CASE FINISH: TIN-PLATED
 QUANTITY TERM: 6
 MATERIAL:
 CORE & SLUG: POWDERED IRON



SCHMATIC DIAGRAM

REQ.	ITEM	PART NO.	DESCRIPTION				SYMBOL
Ø			THE TECHNICAL MATERIEL CORP. MAMARONECK. NEW YORK				
X			TRANSFORMER, RF, ADJUSTABLE				
SYM	DESCRIPTION	DATE	CH. NO.	DRAFTS	CHECKER	ENG. APP.	
UNLESS OTHERWISE SPECIFIED DIMENSIONS ARE IN INCHES AND INCLUDE CHEMICALLY APPLIED OR PLATED FINISHES		SCALE					
DECIMALS X ± .05 XX ± .01 XXX ± .005	TOLERANCES	FRACTIONS ± 1/64 ANGLES ± 0° 30'	CODE A	2-A-3943			
		TYPE & TEMPER		HEAT TREAT. SPEC.		DRAWN H. Austin	CHECKED 3-24-65
		FINISH & SPEC. NO.		ELEC. DES. APP.		MECH. DES. APP.	
						TT235	

REQ. PER UNIT	USED ON			TT236 ∅
	MODEL	ASS'Y. NO.	DATE	
1	LFSB-1	A3791	3-15-65	

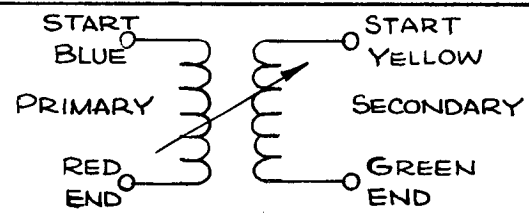


ELECTRICAL SPECS.
(WITH SLUG INSERTED)

OPERATING FREQUENCY:
 INDUCTANCE @ 7.9 MCS
 PRIMARY: $2.1 \mu h \pm .1 \mu h$
 SECONDARY: NOT RATED
 "Q" (PRIMARY) @ 10 MCS: > 100

MECHANICAL SPEC.

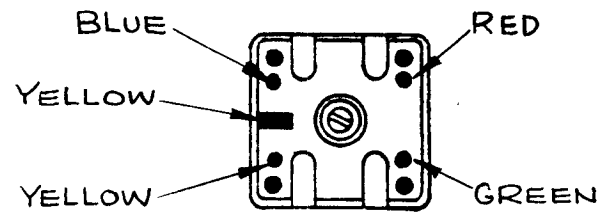
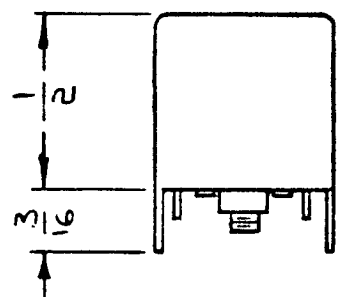
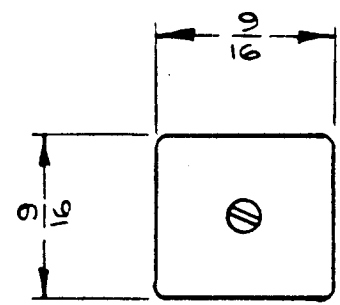
URNS
 PRIMARY: 15
 SECONDARY: 4
 COLOR CODE: YELLOW
 CASE: COPPER CAN
 CASE FINISH: TIN-PLATED
 QUANTITY TERM: -4
 MATERIAL:
 CORE & SLUG: POWDERED IRON



SCHEMATIC DIAGRAM

SYM	DESCRIPTION	DATE	CH. NO.	DRAFTS	CHECKER	ENG. APP.	REQ. ITEM	PART NO.	DESCRIPTION	SYMBOL	
									THE TECHNICAL MATERIEL CORP. MAMARONECK. NEW YORK	∅	
	ORIGINAL RELEASE FOR PRODUCTION							STOCK SIZE			
X	EXPER. RELEASE		X	HLA	gll			MATERIAL			TRANSFORMER, RF, ADJUSTABLE
UNLESS OTHERWISE SPECIFIED DIMENSIONS ARE IN INCHES AND INCLUDE CHEMICALLY APPLIED OR PLATED FINISHES							SCALE				
DECIMALS .X ± .05 .XX ± .01 .XXX ± .005	TOLERANCES	FRACTIONS ± 1/64 ANGLES ± 0° 30'	CODE A	2-A-3944					H. AUSTIN	3-27-65	
							TYPE & TEMPER	HEAT TREAT. SPEC.	DRAWN	CHECKED	FINAL APPROVAL
							FINISH & SPEC. NO.		ELEC. DES. APP.	MECH. DES. APP.	TT236 ∅

REQ. PER UNIT	USED ON			TT237 \emptyset
	MODEL	ASS'Y. NO.	DATE	
1	LFSB-1	A 3791	3-16-65	

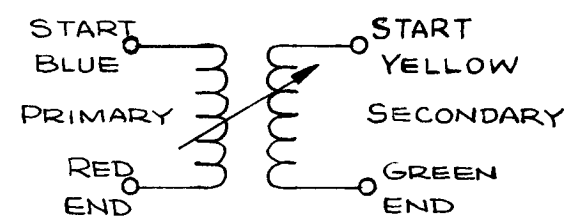


ELECTRICAL SPECS.
(WITH SLUG INSERTED)

OPERATING FREQUENCY:
 INDUCTANCE @ 7.9 MCS
 PRIMARY: 1.96 μ h \pm .05 μ h
 SECONDARY: NOT RATED
 "Q" (PRIMARY) @ 10 MCS : > 105

MECHANICAL SPEC.

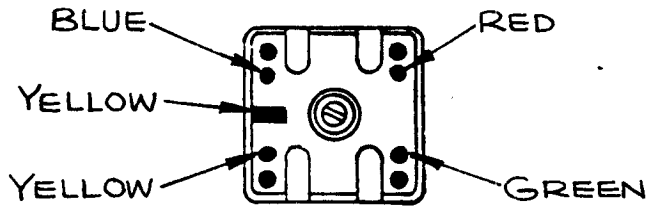
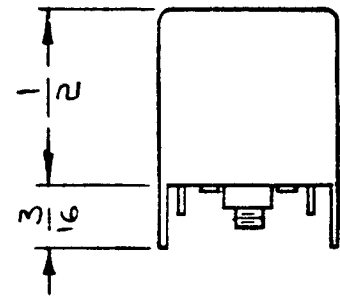
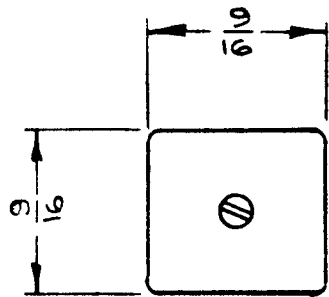
URNS
 PRIMARY: 14
 SECONDARY: 3
 COLOR CODE: YELLOW
 CASE: COPPER CAN
 CASE FINISH: TIN-PLATED
 QUANTITY TERM: -4
 MATERIAL:
 CORE & SLUG: POWDERED IRON



SCHEMATIC DIAGRAM

SYM	DESCRIPTION	DATE	CH. NO.	DRAFTS	CHECKER	ENG. APP.	REQ. ITEM	PART NO.	DESCRIPTION	SYMBOL			
\emptyset	ORIGINAL RELEASE FOR PRODUCTION	4-7-65							THE TECHNICAL MATERIEL CORP. MAMARONECK. NEW YORK				
X	EXPER. RELEASE	3-16-65	X	HLA				TRANSFORMER, RF, ADJUSTABLE					
	UNLESS OTHERWISE SPECIFIED DIMENSIONS ARE IN INCHES AND INCLUDE CHEMICALLY APPLIED OR PLATED FINISHES	SCALE											
	DECIMALS .X \pm .05 .XX \pm .01 .XXX \pm .005	FRACTIONS \pm 1/64 ANGLES \pm 0° 30'	CODE A	2-A-3945					H. AUSTIN	3-29-65			
	TOLERANCES								TYPE & TEMPER	HEAT TREAT. SPEC.	DRAWN	CHECKED	FINAL APPROVAL
													TT237 \emptyset

REQ. PER UNIT	USED ON			TT238	Ø
	MODEL	ASS'Y. NO.	DATE		
1	LFSB-1	A3791	3-16-65		

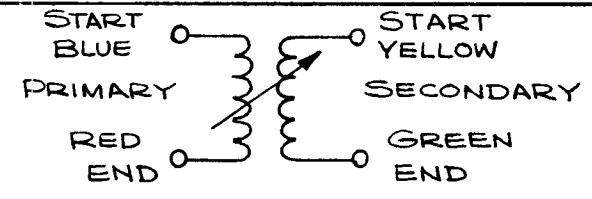


**ELECTRICAL SPECS.
(WITH SLUG INSERTED)**

OPERATING FREQUENCY:
 INDUCTANCE @ 7.9 MCS
 PRIMARY: 2.3 μ h \pm .1 μ h
 SECONDARY: NOT RATED
 "Q" (PRIMARY) @ 10 MCS: > 100

MECHANICAL SPEC.

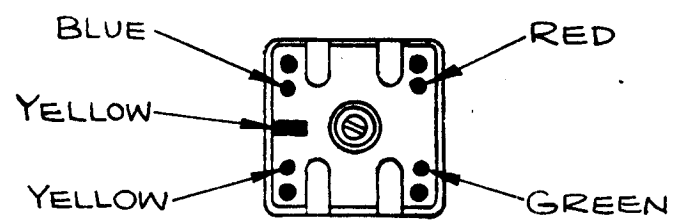
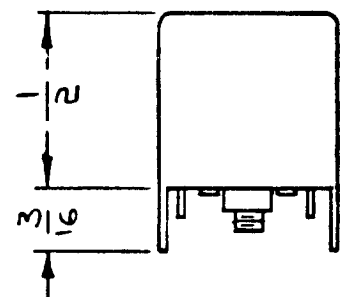
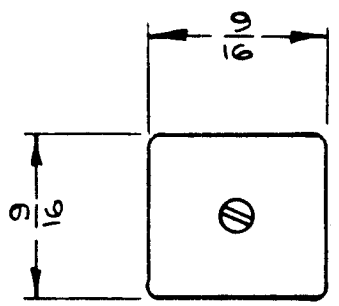
URNS
 PRIMARY: 16
 SECONDARY: 1
 COLOR CODE: YELLOW
 CASE: COPPER CAN
 CASE FINISH: TIN-PLATED
 QUANTITY TERM: -4
 MATERIAL:
 CORE & SLUG: POWDERED IRON



SCHMATIC DIAGRAM

SYM	DESCRIPTION	DATE	CH. NO.	DRAFTS	CHECKER	ENG. APP.	REQ. ITEM	PART NO.	DESCRIPTION	SYMBOL			
Ø	ORIGINAL RELEASE FOR PRODUCTION								THE TECHNICAL MATERIEL CORP. MAMARONECK, NEW YORK	TRANSFORMER, RF, ADJUSTABLE			
X	EXPER. RELEASE	3-16-65	X	HLA									
UNLESS OTHERWISE SPECIFIED DIMENSIONS ARE IN INCHES AND INCLUDE CHEMICALLY APPLIED OR PLATED FINISHES		SCALE							H. AUSTIN	3-21-65	J. K. K.		
DECIMALS .X \pm .05 .XX \pm .01 .XXX \pm .005	TOLERANCES	FRACTIONS \pm 1/64 ANGLES \pm 0° 30'	CODE A	2-A-3946								TT238	Ø
							TYPE & TEMPER	HEAT TREAT. SPEC.	DRAWN	CHECKED	ELEC. DES. APP.		MECH. DES. APP.
									J. K. K.				

REQ. PER UNIT	USED ON			TT239	Ø
	MODEL	ASS'Y. NO.	DATE		
1	LFSB-1	A3791	3-16-65		

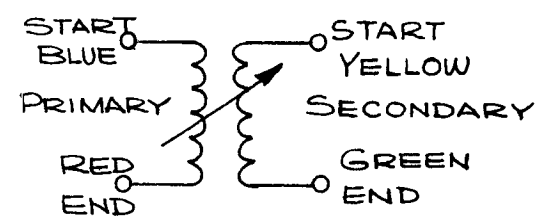


ELECTRICAL SPECS.
(WITH SLUG INSERTED)

OPERATING FREQUENCY:
INDUCTANCE @ 7.9 MCS
PRIMARY: $2.35 \mu h \pm .4 \mu h$
SECONDARY: NOT RATED
"Q" (PRIMARY) @ 10 MCS: > 100

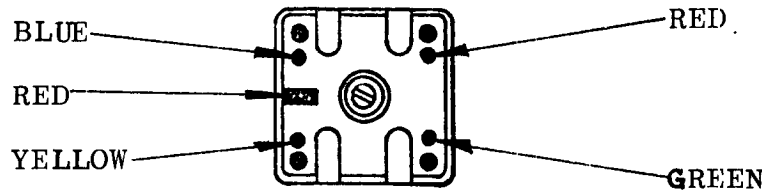
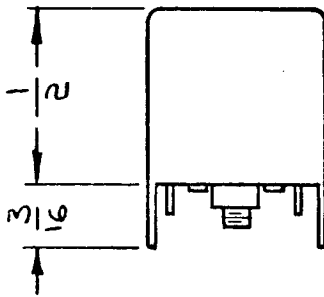
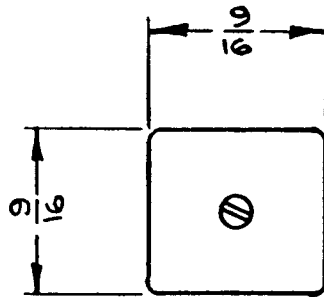
MECHANICAL SPEC.

URNS
PRIMARY: 16
SECONDARY: 5
COLOR CODE: YELLOW
CASE: COPPER CAN
CASE FINISH: TIN-PLATED
QUANTITY TERM: -4
MATERIAL:
CORE & SLUG: POWDERED IRON



SCHMATIC DIAGRAM

REQ. ITEM	PART NO.	DESCRIPTION	SYMBOL
Ø	—	THE TECHNICAL MATERIEL CORP. MAMARONECK. NEW YORK	
X	—	TRANSFORMER, RF, ADJUSTABLE	
SYM	DESCRIPTION	DATE	CH. NO.
	UNLESS OTHERWISE SPECIFIED DIMENSIONS ARE IN INCHES AND INCLUDE CHEMICALLY APPLIED OR PLATED FINISHES	SCALE	
DECIMALS X ± .05 XX ± .01 XXX ± .005	TOLERANCES	FRACTIONS ± 1/64 ANGLES ± 0° 30'	CODE A
	2-A-3947		
	TYPE & TEMPER	HEAT TREAT. SPEC.	DRAWN
	—	—	H. AUSTIN
	FINISH & SPEC. NO.	ELEC. DES. APP.	MECH. DES. APP.
	—	—	3-29-65
			TT239



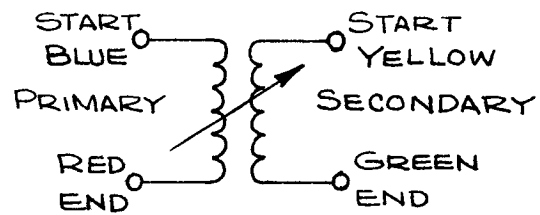
REQ. PER UNIT	USED ON			TT240	Ø
	MODEL	ASS'Y. NO.	DATE		
4	LFSB-I	A3788	3-16-65		

ELECTRICAL SPECS.
(WITH SLUG INSERTED)

OPERATING FREQUENCY:
INDUCTANCE: @ 2.5MC
PRIMARY: 26µh ± 1µh
SECONDARY: NOT RATED
"Q" (PRIMARY) @ 1.0 MC: 90 MIN.

MECHANICAL SPEC.

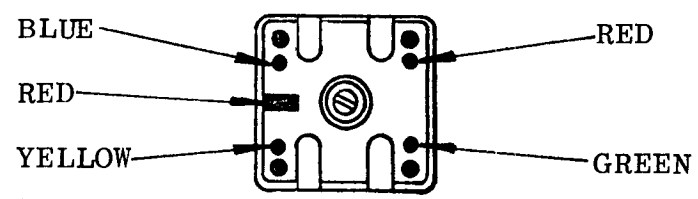
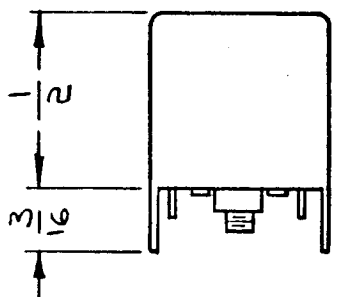
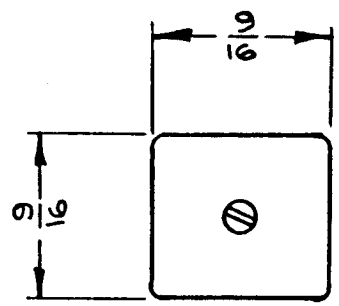
TURNS
PRIMARY: 49
SECONDARY: 9
COLOR CODE: RED
CASE: COPPER CAN
CASE FINISH: TIN-PLATED
QUANTITY TERM: 4
MATERIAL:
CORE & SLUG: POWDERED IRON



SCHEMATIC DIAGRAM

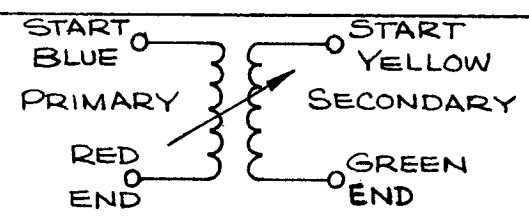
SYM	DESCRIPTION	DATE	CH. NO.	DRAFTS	CHECKER	ENG. APP.	REQ. ITEM	PART NO.	DESCRIPTION	SYMBOL	
									THE TECHNICAL MATERIEL CORP. MAMARONECK, NEW YORK	Ø	
	ORIGINAL RELEASE FOR PRODUCTION	A3788						STOCK SIZE			
X	EXPER. RELEASE	3-16-65	X	HLA					TRANSFORMER, RF, ADJUSTABLE		
								MATERIAL			
UNLESS OTHERWISE SPECIFIED DIMENSIONS ARE IN INCHES AND INCLUDE CHEMICALLY APPLIED OR PLATED FINISHES							SCALE				
DECIMALS X ± .05 .XX ± .01 .XXX ± .005	TOLERANCES	FRACTIONS ± 1/64 ANGLES ± 0° 30'	CODE A	2-A-3948					H. AUSTIN	3-16-65	
							TYPE & TEMPER	HEAT TREAT. SPEC.	DRAWN	CHECKED	FINAL APPROVAL
									MJB		TT-240
							FINISH & SPEC. NO.		ELEC. DES. APP.	MECH. DES. APP.	Ø

REQ. PER UNIT	USED ON			TT-241	Ø
	MODEL	ASS'Y. NO.	DATE		
2	LFSB-1	A-3788	3-16-65		



ELECTRICAL SPECS.
 (WITH SLUG INSERTED)
 OPERATING FREQUENCY:
 INDUCTANCE @ 2.5MC
 PRIMARY: 26μh ± 1μh
 SECONDARY: NOT RATED
 "Q" (PRIMARY)@3.0MC:105MIN.

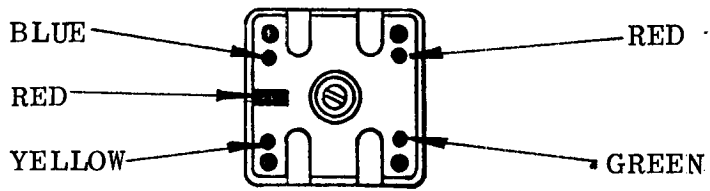
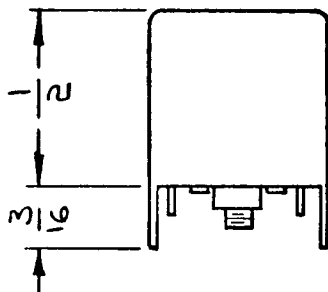
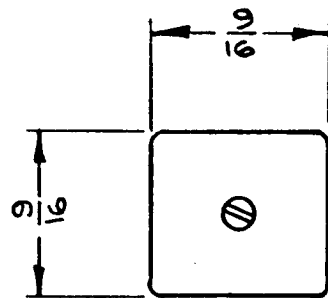
MECHANICAL SPECS.
 TURNS:
 PRIMARY: 49
 SECONDARY: 5
 COLOR CODE: RED
 CASE: COPPER CAN
 CASE FINISH: TIN-PLATED
 QUANTITY TERM: 4
 MATERIAL:
 CORE & SLUG: POWDERED IRON



SCHEMATIC DIAGRAM

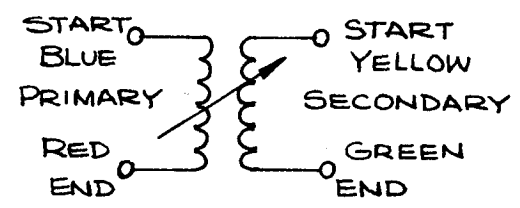
							REQ. ITEM	PART NO.	DESCRIPTION			SYMBOL		
Ø	ORIGINAL RELEASE FOR PRODUCTION	4-7-65					—		THE TECHNICAL MATERIEL CORP. MAMARONECK. NEW YORK					
X	EXPER. RELEASE	3-16-65	X	HLA			—		TRANSFORMER, RF, ADJUSTABLE					
SYM	DESCRIPTION	DATE	CH. NO.	DRAFTS	CHECKER	ENG. APP.	MATERIAL							
UNLESS OTHERWISE SPECIFIED DIMENSIONS ARE IN INCHES AND INCLUDE CHEMICALLY APPLIED OR PLATED FINISHES		SCALE							H. AUSTINE	3-29-65	FINAL APPROVAL			
DECIMALS .X ± .05 .XX ± .01 .XXX ± .005	TOLERANCES	FRACTIONS ± 1/64 ANGLES, ± 0° 30'	CODE A	2-A-3949								TT-241	Ø	
							TYPE & TEMPER	HEAT TREAT. SPEC.	DRAWN	CHECKED	FINISH & SPEC. NO.		ELEC. DES. APP.	MECH. DES. APP.

REQ. PER UNIT	USED ON			TT242	Ø
	MODEL	ASS'Y. NO.	DATE		
4	LFSB-1	A3788			



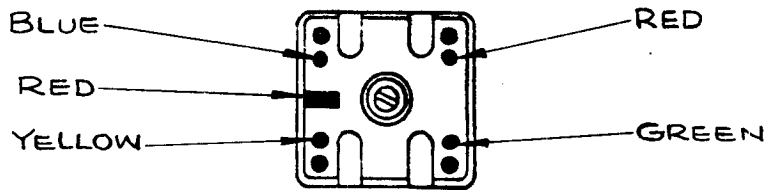
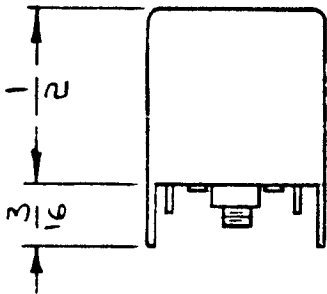
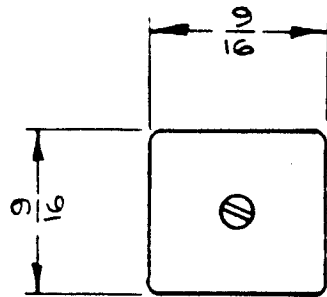
ELECTRICAL SPECS.
(WITH SLUG INSERTED)
OPERATING FREQUENCY:
INDUCTANCE @ 7.9MC
PRIMARY: 3.5µh ± .1 µh
SECONDARY: NOT RATED
"Q" (PRIMARY) 9.0 MC:110MIN.

MECHANICAL SPEC.
TURNS:
PRIMARY: 17
SECONDARY: 1
COLOR CODE: RED
CASE: COPPER CAN
CASE FINISH: TIN-PLATED
QUANTITY TERM: 4
MATERIAL:
CORE & SLUG: POWDERED IRON



SCHEMATIC DIAGRAM

							REQ. ITEM	PART NO.	DESCRIPTION	SYMBOL				
Ø ORIGINAL RELEASE FOR PRODUCTION							4-7-65	Ø	HLA	THE TECHNICAL MATERIEL CORP. MAMARONECK, NEW YORK				
X EXPER. RELEASE							3-16-65	X	HLA	TRANSFORMER, RF, ADJUSTABLE				
SYM	DESCRIPTION	DATE	CH. NO.	DRAFTS	CHECKER	ENG. APP.	MATERIAL							
UNLESS OTHERWISE SPECIFIED DIMENSIONS ARE IN INCHES AND INCLUDE CHEMICALLY APPLIED OR PLATED FINISHES							SCALE		H. AUSTIN 3-24-65					
DECIMALS X ± .05 .XX ± .01 .XXX ± .005							FRACTIONS ± 1/64 ANGLES ± 0° 30'		TYPE & TEMPER	HEAT TREAT. SPEC.	DRAWN	CHECKED	FINAL APPROVAL	
TOLERANCES							CODE	2-A-3950	FINISH & SPEC. NO.		ELEC. DES. APP.	MECH. DES. APP.	TT242	Ø



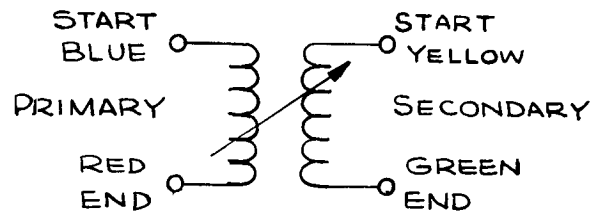
REQ. PER UNIT	USED ON			TT243	Ø
	MODEL	ASS'Y. NO.	DATE		
1	LF5B-1	A3789	3-15-65		

ELECTRICAL SPECS.
(WITH SLUG INSERTED)

OPERATING FREQUENCY:
 INDUCTANCE @ 7.9 MCS
 PRIMARY: $4.9 \mu h \pm .2 \mu h$
 SECONDARY: NOT RATED
 "Q" (PRIMARY) @ 6.5 MCS: > 110

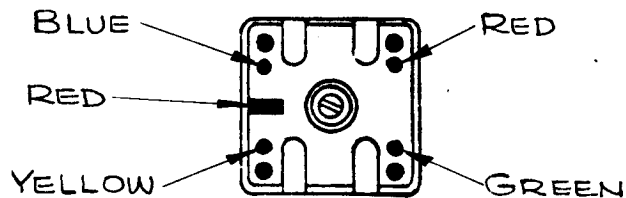
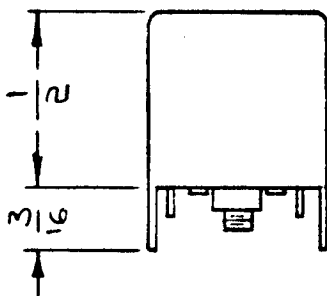
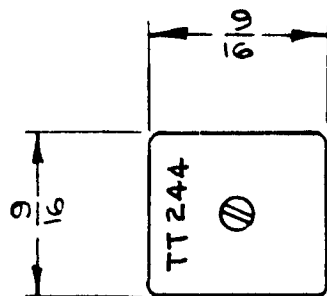
MECHANICAL SPEC.

URNS
 PRIMARY: 20
 SECONDARY: 7
 COLOR CODE: RED
 CASE: COPPER CAN
 CASE FINISH: TIN-PLATED
 QUANTITY TERM: -4
 MATERIAL:
 CORE & SLUG: POWDERED IRON



SCHEMATIC DIAGRAM

							REQ. ITEM	PART NO.	DESCRIPTION	SYMBOL	
Ø ORIGINAL RELEASE FOR PRODUCTION							4.7.65		THE TECHNICAL MATERIEL CORP. MAMARONECK. NEW YORK		
X EXPER. RELEASE							3-15-65	X	HLA		
SYM	DESCRIPTION		DATE	CH. NO.	DRAFTS	CHECKER	ENG. APP.	MATERIAL	TRANSFORMER, RF, ADJUSTABLE		
UNLESS OTHERWISE SPECIFIED DIMENSIONS ARE IN INCHES AND INCLUDE CHEMICALLY APPLIED OR PLATED FINISHES			SCALE						H. AUSTIN	3-29-65	FINAL APPROVAL
DECIMALS .X ± .05 .XX ± .01 .XXX ± .005	TOLERANCES		FRACTIONS ± 1/64 ANGLES ± 0° 30'	CODE A	2-A-3951						TT243
TYPE & TEMPER HEAT TREAT. SPEC.											
FINISH & SPEC. NO.									ELEC. DES. APP.	MECH. DES. APP.	



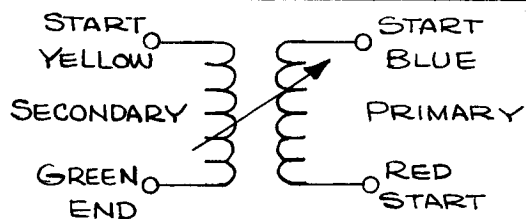
REQ. PER UNIT	USED ON			TT 244	A
	MODEL	ASSY. NO.	DATE		
3	LFSB-1	A3790	3-15-65		

ELECTRICAL SPECS.
(WITH SLUG INSERTED)

OPERATING FREQUENCY:
INDUCTANCE @ 10 KC 1/4 % BRIDGE
PRIMARY: $4.9\mu h \pm .2\mu h$
SECONDARY: NOT RATED
"Q" (PRIMARY) @ 6.5 MC : 90 MIN.

MECHANICAL SPEC.

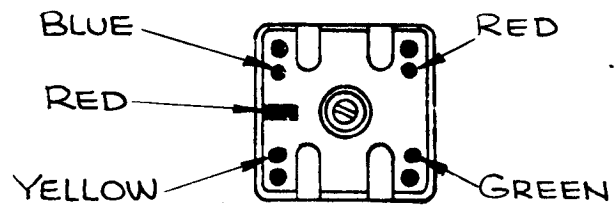
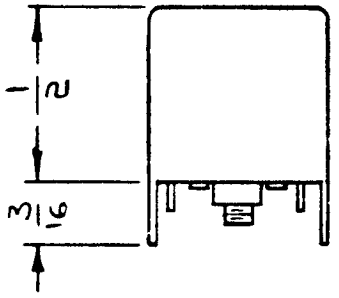
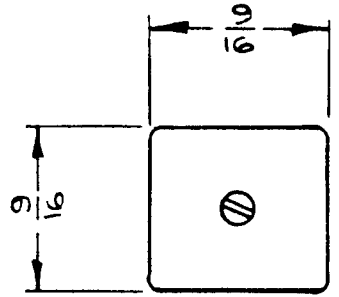
TURNS
PRIMARY: 20
SECONDARY: 7
COLOR CODE: RED
CASE: COPPER CAN
CASE FINISH: TIN-PLATED
QUANTITY TERM: 4
MATERIAL:
CORE & SLUG: POWDERED IRON



SCHEMATIC DIAGRAM

SYM	DESCRIPTION	DATE	CH. NO.	DRAFTS	CHECKER	ENG. APP.	REQ. ITEM	PART NO.	DESCRIPTION	SYMBOL	
A	9" WIRE 105, 200	3-15-65	16		J.P.	MM			THE TECHNICAL MATERIEL CORP. MAMARONECK. NEW YORK	A	
Ø	ORIGINAL RELEASE FOR PRODUCTION	4-7-65			J.P.			STOCK SIZE			
X	EXPER. RELEASE	3-15-65	X	HLA	H			MATERIAL			TRANSFORMER, RF, ADJUSTABLE
UNLESS OTHERWISE SPECIFIED DIMENSIONS ARE IN INCHES AND INCLUDE CHEMICALLY APPLIED OR PLATED FINISHES		SCALE							H. AUSTIN	3-24-65	J.P.
DECIMALS X ± .05 XX ± .01 XXX ± .005	TOLERANCES	FRACTIONS ± 1/64 ANGLES ± 0° 30'	CODE A	2-A-3953					J.P.		
							TYPE & TEMPER	HEAT TREAT. SPEC.	DRAWN	CHECKED	FINAL APPROVAL
							FINISH & SPEC. NO.		ELEC. DES. APP.	MECH. DES. APP.	TT 244
											A

REQ. PER UNIT	USED ON			TT 245	Ø
	MODEL	ASS'Y. NO.	DATE		
2	LFSB-1	A 3790	3-15-65		

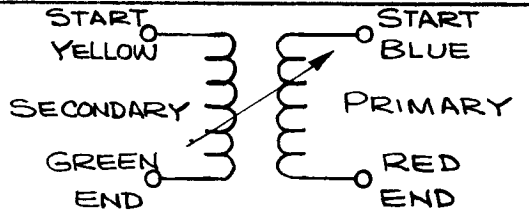


**ELECTRICAL SPECS.
(WITH SLUG INSERTED)**

OPERATING FREQUENCY:
 INDUCTANCE @ 7.9 MC
 PRIMARY: $9.7 \mu h \pm .5 \mu h$
 SECONDARY: NOT RATED
 "Q" (PRIMARY) @ 6.5 MC: 105 MIN.

MECHANICAL SPEC.

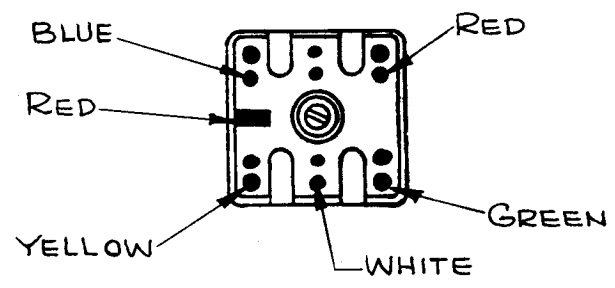
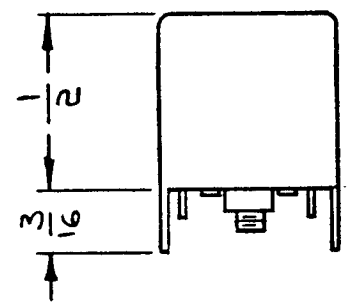
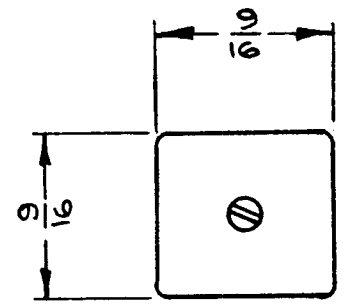
URNS
 PRIMARY: 30
 SECONDARY: 30
 COLOR CODE: RED
 CASE: COPPER CAN
 CASE FINISH: TIN-PLATED
 QUANTITY TERM: 4
 MATERIAL:
 CORE & SLUG: POWDERED IRON



SCHMATIC DIAGRAM

REQ. ITEM	PART NO.	DESCRIPTION	SYMBOL
Ø	ORIGINAL RELEASE FOR PRODUCTION	4/1/65	
X	EXPER. RELEASE	3/15/65	HLA
SYM	DESCRIPTION	DATE	CH. NO. DRAFTS CHECKER ENG. APP.
UNLESS OTHERWISE SPECIFIED DIMENSIONS ARE IN INCHES AND INCLUDE CHEMICALLY APPLIED OR PLATED FINISHES		SCALE	
DECIMALS X ± .05 .XX ± .01 .XXX ± .005	TOLERANCES	FRACTIONS ± 1/64 ANGLES ± 0° 30'	CODE A
2-A-3954		H. AUSTIN 3-29-65	
FINISH & SPEC. NO.		TYPE & TEMPER	HEAT TREAT. SPEC.
ELEC. DES. APP.		MECH. DES. APP.	FINAL APPROVAL
TT 245		Ø	

REQ. PER UNIT	USED ON			TT246	Ø
	MODEL	ASS'Y. NO.	DATE		
2	LFSB-1	A.3790	3-24-65		

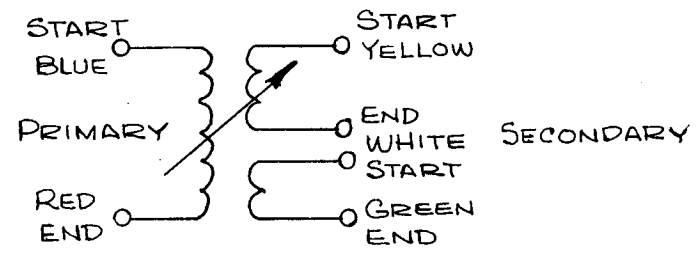


**ELECTRICAL SPECS.
(WITH SLUG INSERTED)**

OPERATING FREQUENCY:
 INDUCTANCE @ 7.9 MC
 PRIMARY: 4.1 μ h \pm .5 μ h
 SECONDARY: NOT RATED
 "Q" (PRIMARY) @ 6.5 MC: 35 MIN.

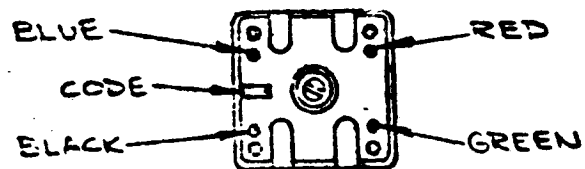
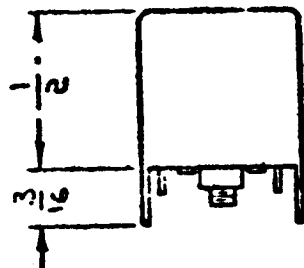
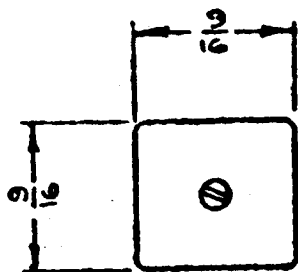
MECHANICAL SPEC.

TURNS
 PRIMARY: 20
 SECONDARY: 20 BIFILAR
 COLOR CODE: RED
 CASE: COPPER CAN
 CASE FINISH: TIN-PLATED
 QUANTITY TERM: 6
 MATERIAL:
 CORE & SLUG: POWDERED IRON



SCHMATIC DIAGRAM

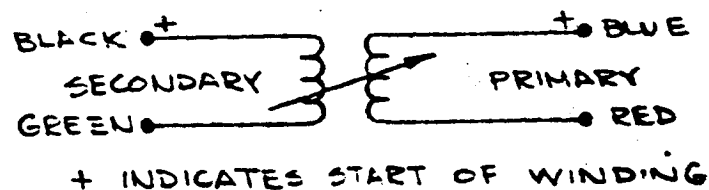
REQ.	ITEM	PART NO.	DESCRIPTION				SYMBOL	
		<i>—</i>	THE TECHNICAL MATERIEL CORP. MAMARONECK. NEW YORK					
		STOCK SIZE	TRANSFORMER, RF, ADJUSTABLE					
		MATERIAL						
Ø		ORIGINAL RELEASE FOR PRODUCTION	4.7.65					
X		EXPER. RELEASE	3-24-65	X	HLA			
SYM	DESCRIPTION	DATE	CH. NO.	DRAFTS	CHECKER	ENG. APP.		
UNLESS OTHERWISE SPECIFIED DIMENSIONS ARE IN INCHES AND INCLUDE CHEMICALLY APPLIED OR PLATED FINISHES		SCALE						
DECIMALS .X \pm .05 .XX \pm .01 .XXX \pm .005	TOLERANCES	FRACTIONS \pm 1/64 ANGLES \pm 0° 30'	CODE A	2-A-3955				
		TYPE & TEMPER	HEAT TREAT. SPEC.	DRAWN	CHECKED	FINAL APPROVAL		
		FINISH & SPEC. NO.		ELEC. DES. APP.	MECH. DES. APP.		TT246 Ø	



REQ PER UNIT	USED ON		TT247	A
	MODEL	DATE		
①	PFCB-1	c-21-64		

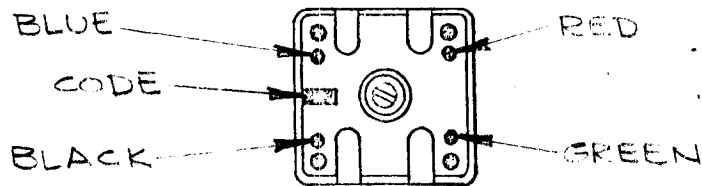
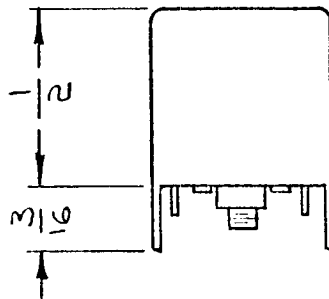
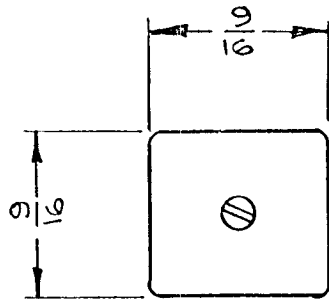
ELECTRICAL SPECS.
(WITH SLUG INSERTED)
OPERATING FREQUENCY:
INDUCTANCE @ 7.9MC
PRIMARY: 4.5μh±5%
SECONDARY: NOT RATED
"Q"(PRIMARY)@9MC: 70 MIN.

MECHANICAL SPEC.
TURNS
PRIMARY: 20
SECONDARY: 5
COLOR CODE: RED
CASE: COPPER CAN
CASE FINISH: TIN-PLATED
QUANTITY TERM: 4
MATERIAL:
CORE & SLUG: POWER IRON



SCHEMATIC DIAGRAM

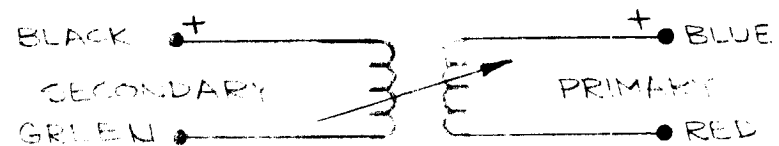
REQ	ITEM	PART NO.	GELLMAN	DESCRIPTION	SYMBOL	
A	"Q" PRI. WAS 80 MIN	3-9-67	17921	RME	THE TECHNICAL MATERIEL CORP. MAMARONECK. NEW YORK	
0	ORIGINAL RELEASE FOR PRODUCTION	-5-67	4L	WFS	TRANSFORMER, RF, ADJUSTABLE	
X	EXPER. RELEASE	2-67	X	WFS		
DESCRIPTION		DATE	CM NO	ENGRS	CHECKED	ENG APP
MATERIAL		SCALE		2A3963		
TYPE & TEMPER		INT ATT	INT ATT	SPEC	DRAWN	CHECKED
FINISH & SFC. NO.		DATE		WFS	APP	MECH CYS APP
TOLERANCES		CODE	A		TT247	
						A



REQ. PER UNIT	USED ON			TT248	A
	MODEL	ASSY. NO.	DATE		
5	PFCB-1		10-21-64		

ELECTRICAL SPECS.
 (WITH SLUG INSERTED)
 OPERATING FREQUENCY: 1 MC
 INDUCTANCE: @ 790KC
 PRIMARY: 175μh ±5%
 SECONDARY: NOT RATED
 "Q" (PRIMRAY)@IMC: 70MIN

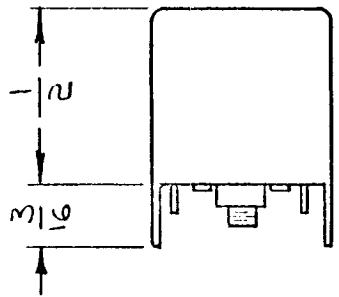
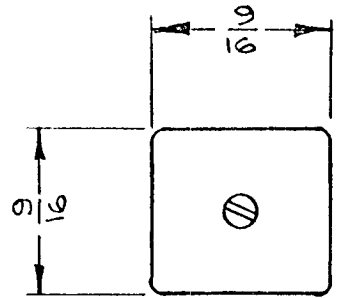
MECHANICAL SPEC.
 TURNS
 PRIMARY: 135
 SECONDARY: 35
 COLOR CODE: RED
 CASE: COPPER CAN
 CASE FINISH: TIN-PLATED
 QUANTITY TERM: 4
 MATERIAL:
 CORE & SLUG: POWER IRON



+ INDICATES START OF WINDING
 SCHEMATIC DIAGRAM

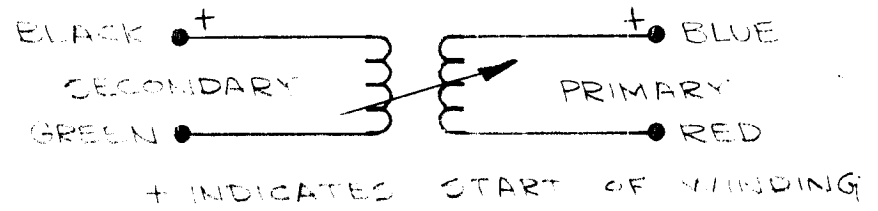
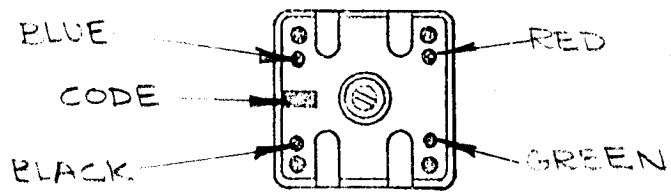
SYM	DESCRIPTION	DATE	CH. NO.	DRAFTS	CHECKER	ENGS. APP.	REQ. ITEM	PART NO.	GELLMAN	DESCRIPTION	SYMBOL	
A	Q PRI WAS 80 MIN	3-9-61	17921	RME	<i>[Signature]</i>					THE TECHNICAL MATERIEL CORP. MAMARONECK, NEW YORK		
Q	ORIGINAL RELEASE FOR PRODUCTION	5-5-61									TRANSFORMER RF, ADJUSTABLE	
X	EXPER. RELEASE	11-1-64	X									
UNLESS OTHERWISE SPECIFIED DIMENSIONS ARE IN INCHES AND INCLUDE CHEMICALLY APPLIED OR PLATED FINISHES		SCALE		2A=061								
DECIMALS X ±.05 XX ±.01 XXX ±.005	TOLERANCES	FRACTIONS ± 1/64 ANGLES ± 0° 30'	CODE A							<i>[Signature]</i>		
										DRAWN	CHECKED	FINAL APPROVAL <i>[Signature]</i>
												TT248
										ELEC. DES. APP.	MECH. DES. APP.	A

REQ. PER UNIT	USED ON			TT250	A
	MODEL	ASS'Y. NO.	DATE		
4	PFCB-1		10-21-64		



ELECTRICAL SPECS.
(WITH SLUG INSERTED)
OPERATING FREQUENCY:
INDUCTANCE: @ 7.9MC
PRIMARY: 5.5μh ±5%
SECONDARY: NOT RATED
"Q" (PRIMARY)@ 5MC 80 MIN.

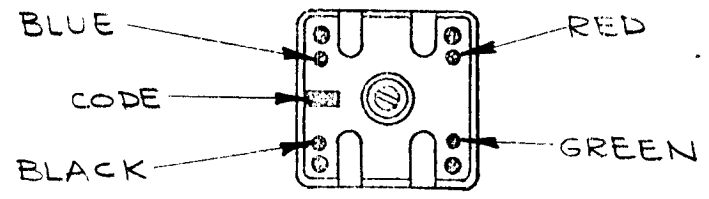
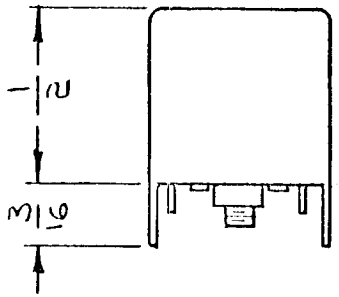
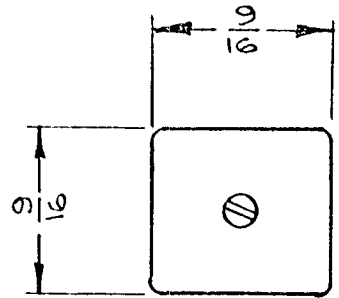
MECHANICAL SPECS.
TURNS
PRIMARY: 24
SECONDARY: 5
COLOR CODE: RED
CASE: COPPER CAN
CASE FINISH: TIN-PLATED
QUANTITY TERM: 4
MATERIAL:
CORE & SLUG: POWER IRON



SCHEMATIC DIAGRAM

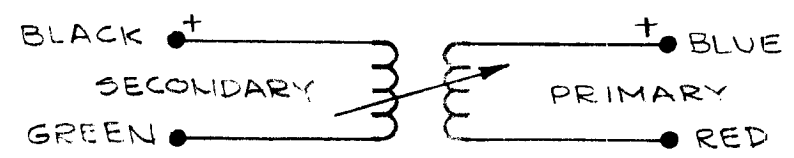
SYM	DESCRIPTION	DATE	CH. NO.	DRAFTS	CHECKER	ENGR. APP.	REQ. ITEM	PART NO.	GELLMAN	DESCRIPTION	SYMBOL	
A	Q PRI. WAS 90 MIN	3-9-67	17921	RVE	<i>[Signature]</i>					THE TECHNICAL MATERIEL CORP. MAMARONECK, NEW YORK	TT250 A	
Q	ORIGINAL RELEASE FOR PRODUCTION	4-5-67	44	(U)				STOCK SIZE				
X	EXPER. RELEASE	10-21-64	X	<i>[Signature]</i>				MATERIAL	TRANSFORMER, RF, ADJUSTABLE			
UNLESS OTHERWISE SPECIFIED DIMENSIONS ARE IN INCHES AND INCLUDE CHEMICALLY APPLIED OR PLATED FINISHES		SCALE	2A3066									
DECIMALS XX ± .05 XXX ± .01 XXX ± .005	TOLERANCES	FRAGTIONS ± 1/64 ANGLES ± 0° 30'	CODE	A								
		TYPE & TEMPER	HEAT TREAT. SPEC.	DRAWN		CHECKED	FINISH & SPEC. NO.		ELEC. DES. APP.	MECH. DES. APP.		

REQ. PER UNIT	USED ON		TT251	
	MODEL	ASS'Y. NO.		
15	PFCB-1		10-21-64	



ELECTRICAL SPECS.
 (WITH SLUG INSERTED)
 OPERATING FREQUENCY: 1 MC
 INDUCTANCE @ 790KC
 PRIMARY: 175μh ±5%
 SECONDARY: NOT RATED
 "Q" (PRIMARY)@1MC: 90 MIN.

MECHANICAL SPEC.
 TURNS
 PRIMARY: 135
 SECONDARY: 15
 COLOR CODE: RED
 CASE: COPPER CAN
 CASE FINISH: TIN-PLATED
 QUANTITY TERM: 4
 MATERIAL:
 CORE & SLUG: POWER IRON

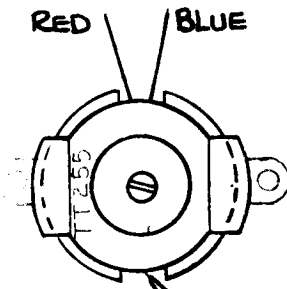


+ INDICATES START OF WINDING
SCHEMATIC DIAGRAM

REQ. ITEM	PART NO.	GELLMAN	DESCRIPTION	SYMBOL									
			THE TECHNICAL MATERIEL CORP. MAMARONECK, NEW YORK										
			TRANSFORMER, RF, ADJUSTABLE										
SYM	DESCRIPTION	DATE	CH. NO.	DRAFTS	CHECKER	ENG. APP.	MATERIAL	TYPE & TEMPER	HEAT TREAT. SPEC.	DRAWN	CHECKED	FINAL APPROVAL	
	ORIGINAL RELEASE	1-											
X	EXPER. RELEASE	10/21/64	X										
UNLESS OTHERWISE SPECIFIED DIMENSIONS ARE IN INCHES AND INCLUDE CHEMICALLY APPLIED OR PLATED FINISHES		SCALE		2A396T									
DECIMALS X ± .05 XX ± .01 XXX ± .005	TOLERANCES	FRACTIONS ± 1/64 ANGLES ± 0° 30'	CODE A										
												TT251	

REQ. PER UNIT	USED ON			TT255	D
	MODEL	ASS'Y. NO.	DATE		
1	CMRA-1	A4218	5-11-65		

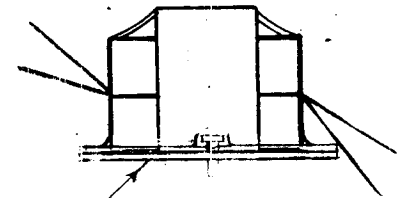
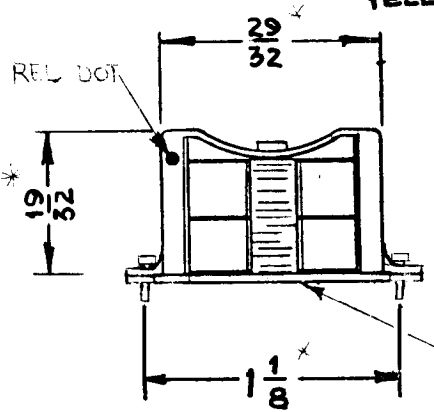
PRIMARY LEADS



SECONDARY LEADS

GREEN
YELLOW

* DIM. FOR REF. ONLY

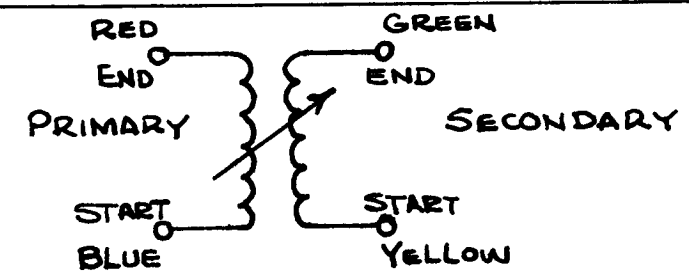


SHIPPING BRACKET
REMOVE BEFORE INSTALLING

ELECTRICAL SPECIFICATIONS (w/SLUG)
 OPERATING FREQUENCY:
 INDUCTANCE @ 10 KC
 PRIMARY: 50 MH ± 0.5MH
 SECONDARY: NOT RATED
 "Q" (PRIMARY) @ 10 KC Min. 10

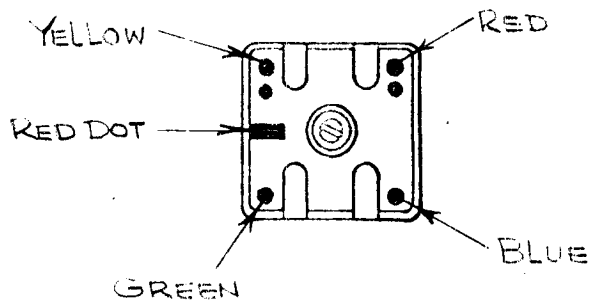
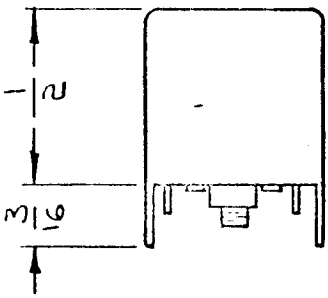
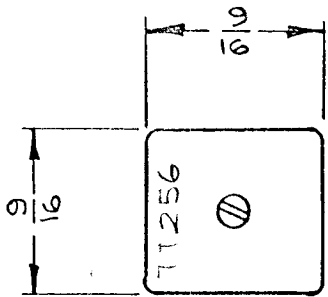
MECHANICAL SPECIFICATIONS

TURNS
 PRIMARY: 465
 SECONDARY: 155
 RETAINER, BOTTOM: BRASS CAD PLATED
 RETAINER, TOP: NICKEL SILVER H/H
 MATERIAL:
 CORE & SLUG: FERRITE



D	SPEC'S CLARIFIED	3-22-67	17981	HLA	QOB	
C	REVISED ALL DIMS. ADDED DIM. FOR REF. NOTE.	12-9-64	17434	RME	QOB	
B	REVISED PRI. & SEC. LEAD POSITIONS	7/27/64	16935	JL	JL	
A	CHGD. POS. OF RED DOT & TAMPING MFG. WAS 215S, 215L	3-1-66	11637	KM	QOB	
Ø	ORIG. RELEASE	5-11-65	Ø	HLA		
SYM	DESCRIPTION	DATE	CH. NO.	DRAFTS	CHECKER	ENG. APP.
UNLESS OTHERWISE SPECIFIED DIMENSIONS ARE IN INCHES AND INCLUDE CHEMICALLY APPLIED OR PLATED FINISHES		SCALE 2:1				
DECIMALS .X ± .05 .XX ± .01 .XXX ± .005	TOLERANCES	FRACTIONS ± 1/64 ANGLES ± 0° 30'	CODE A	A4259		

REQ. ITEM	PART NO.	DESCRIPTION	SYMBOL
		THE TECHNICAL MATERIEL CORP. MAMARONECK, NEW YORK	
	STOCK SIZE	TRANSFORMER, RF, ADJ.	
	MATERIAL	SYN-B-TI	
TYPE & TEMPER	HEAT TREAT. SPEC.	HLA	HLA
FINISH & SPEC. NO.	ELEC. DES. APP.	MECH. DES. APP.	TT255 D



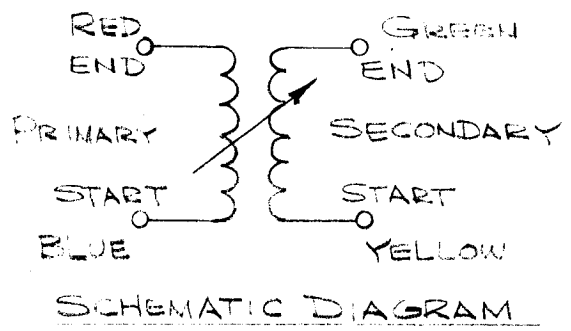
REQ. PER UNIT	USED ON		TT256	B
	MODEL	ASSY. NO.		
2	CMRA-1	A4219	5-11-65	

ELECTRICAL SPECS.
(W/O SLUG)

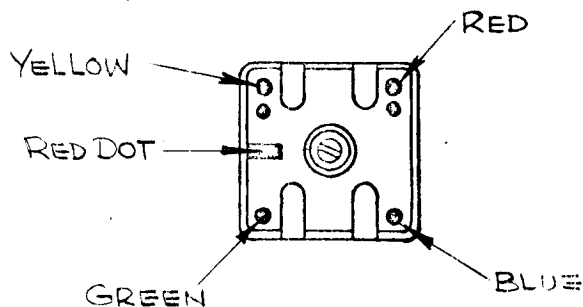
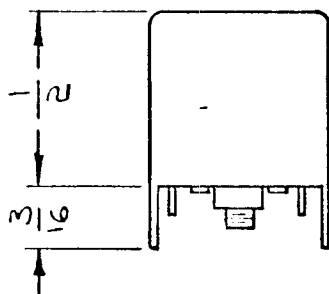
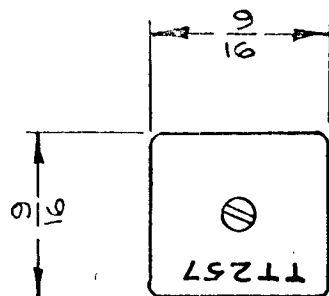
OPERATING FREQUENCY:
INDUCTANCE @ 2.5 MHZ
PRIMARY: 55 μ h \pm 10.0 μ h
SECONDARY: NOT RATED
"Q" (PRIMARY) @ 2.5 MHZ *Mins. 20*

MECHANICAL SPEC.

URNS
PRIMARY: 100
SECONDARY: 50
COLOR CODE: RED
CASE: COPPER CAN
CASE FINISH: TIN-PLATED
QUANTITY TERM: 4
MATERIAL:
CORE & SLUG: POWDERED IRON



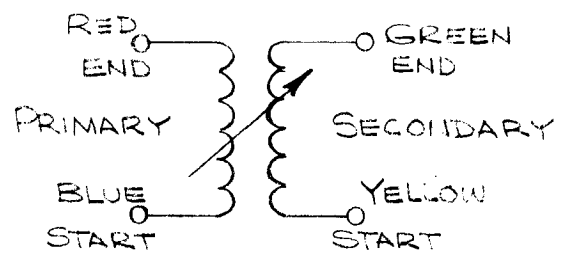
REQ.	ITEM	PART NO.	DESCRIPTION				SYMBOL	
B	TT256 RELOC.	12.30.65	17586	HLA	<i>QCB</i>	THE TECHNICAL MATERIEL CORP. MAMARONECK, NEW YORK TRANSFORMER, RF. ADJ. OA-T1, OA-T2	TT256 B	
A	ELEC. SPECS. REVISION	7-28-64	16513	KYE	<i>[Signature]</i>			
Ø	ORIG. RELEASE	5-11-65	Ø	HLA				
SYM	DESCRIPTION	DATE	CH. NO.	DRAFTS	CHECKER	ENG. APP.		
UNLESS OTHERWISE SPECIFIED DIMENSIONS ARE IN INCHES AND INCLUDE CHEMICALLY APPLIED OR PLATED FINISHES		SCALE						
DECIMALS X \pm .05 XX \pm .01 XXX \pm .005	TOLERANCES	FRACTIONS \pm 1/64 ANGLES \pm 0° 30'	CODE A	2A42G9				
TYPE & TEMPER		HEAT TREAT. SPEC.		DRAWN		CHECKED	FINAL APPROVAL	
FINISH & SPEC. NO.		ELEC. DES. APP.		MECH. DES. APP.				



REQ. PER UNIT	USED ON			TT257	C
	MODEL	ASSY. NO.	DATE		
	CMRA-1	A4219	5-11-65		

ELECTRICAL SPECS.
 (W/O SLUG)
 OPERATING FREQUENCY:
 INDUCTANCE @ 2.5 MC
 PRIMARY: 80 μ h \pm 10%
 SECONDARY: NOT RATED
 "Q" (PRIMARY) @ 2.5 MC, MIN-35

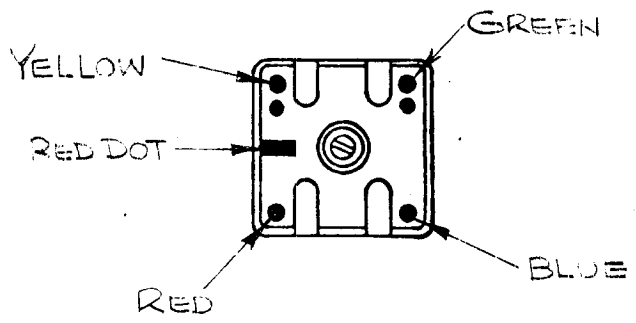
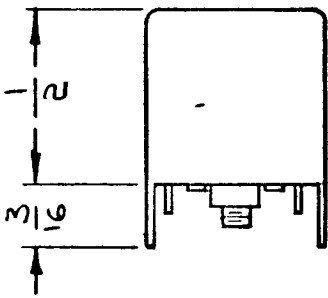
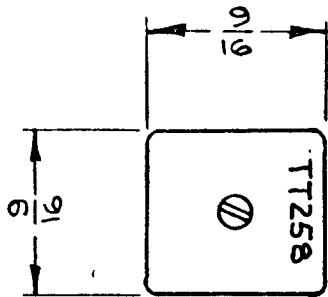
MECHANICAL SPEC.
 TURNS
 PRIMARY: 127
 SECONDARY: 9
 COLOR CODE: RED
 CASE: COPPER CAN
 CASE FINISH: TIN-PLATED
 QUANTITY TERM: 4
 MATERIAL:
 CORE & SLUG: POWDERED IRON



SCHEMATIC DIAGRAM

C	RELCD. TT257	12-7-65	17373	RME	Q/B	REQ. ITEM	PART NO.	DESCRIPTION	SYMBOL		
B	OPER. FREQ. 2.5 MC	3-1-65	1501	RME	THK			THE TECHNICAL MATERIEL CORP. MAMARONECK, NEW YORK TRANSFORMER, RF. ADJ. OA-T3			
A	IND. PRI. WAS 100 μ h \pm 5.0% PRI "Q" WAS 900KC. MIN.	1-2-65	16575	RME	THK						
Ø	ORIG. RELEASE	5-11-65	Ø	HLA							
SYM	DESCRIPTION	DATE	CH. NO.	DRAFTS	CHECKER	ENG. APP.	MATERIAL				
UNLESS OTHERWISE SPECIFIED DIMENSIONS ARE IN INCHES AND INCLUDE CHEMICALLY APPLIED OR PLATED FINISHES		SCALE H				TYPE & TEMPER		HEAT TREAT. SPEC.	DRAWN	CHECKED	FINAL APPROVAL
DECIMALS .X \pm .05 .XX \pm .01 .XXX \pm .005	TOLERANCES	FRACTIONS \pm 1/64 ANGLES \pm 0° 30'	CODE A	2A 4210			FINISH & SPEC. NO.		ELEC. DES. APP.	MECH. DES. APP.	TT257 C

REQ. PER UNIT	USED ON			TT258	B
	MODEL	ASSY. NO.	DATE		
4	CMRA-1	A4220	5-11-65		

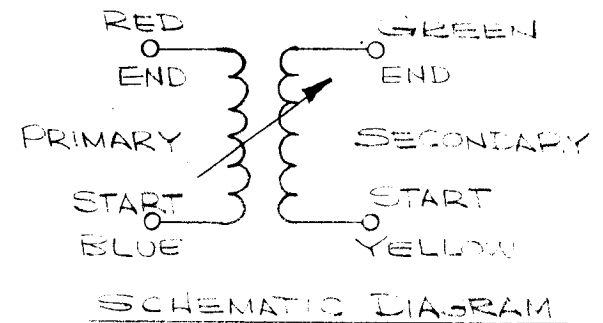


ELECTRICAL SPECS.
(W/O SLUG)

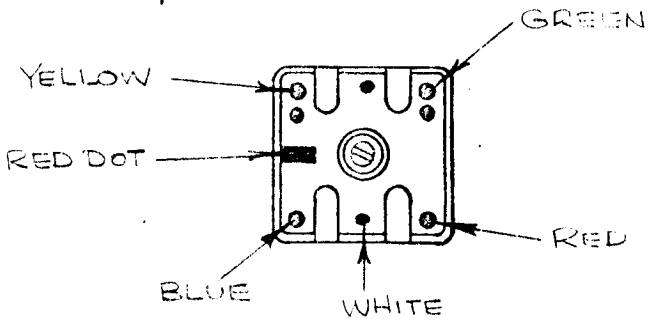
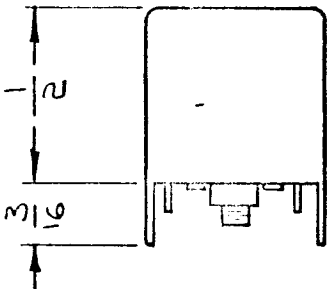
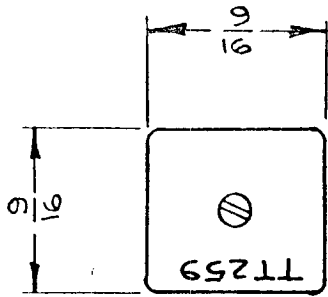
OPERATING FREQUENCY:
 INDUCTANCE @ 1.75 mc
 PRIMARY: $10\mu h \pm 1.0\mu h$
 SECONDARY: NOT RATED
 "Q" (PRIMARY) @ 1.75mc MIN. 40

MECHANICAL SPEC.

URNS
 PRIMARY: 70
 SECONDARY: 35
 COLOR CODE: RED
 CASE: COPPER CAN
 CASE FINISH: TIN-PLATED
 QUANTITY TERM: 4
 MATERIAL:
 CORE & SLUG: POWDERED IRON



B	RELOC. TT258	12-7-66	17373	RME	90/27	REQ. ITEM	PART NO.	DESCRIPTION	SYMBOL	
A	PRI. IND. WAS $\pm 0.5\mu h$	7/15/65	16575	RME	90/27			THE TECHNICAL MATERIEL CORP. MAMARONECK. NEW YORK	TRANSFORMER, RF, ADJ	
\emptyset	ORIGINAL RELEASE FOR PRODUCTION	5/14/65	X	COL						
X	EXPER. RELEASE	5-11-65	X	HLA						
SYM	DESCRIPTION	DATE	CH. NO.	DRAFTS	CHECKER	ENG. APP.	MATERIAL	IF-T1		
UNLESS OTHERWISE SPECIFIED DIMENSIONS ARE IN INCHES AND INCLUDE CHEMICALLY APPLIED OR PLATED FINISHES		SCALE						H. Austin	5/13/65	5/14/65
DECIMALS X $\pm .05$ XX $\pm .01$ XXX $\pm .005$	TOLERANCES	FRACTIONS $\pm 1/64$ ANGLES $\pm 0^\circ 30'$	CODE	2A4271				AP 5/3/65		TT258 B
						TYPE & TEMPER	HEAT TREAT. SPEC.	DRAWN	CHECKED	FINAL APPROVAL
										TT258 B
										TT258 B



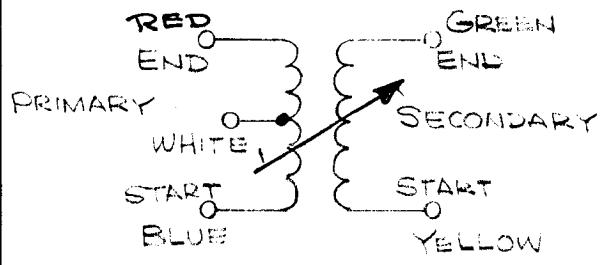
REQ. PER UNIT	USED ON			TT259	B
	MODEL	ASSY. NO.	DATE		
4	CMRA-1	A4220	5-11-65		

ELECTRICAL SPECS.
(w/o SLUG)

OPERATING FREQUENCY:
INDUCTANCE @ 2.5 Mc
PRIMARY: 20 μ h \pm 1.0 μ h
SECONDARY: NOT RATED
"Q" (PRIMARY) @ 2.5 Mc MIN 15

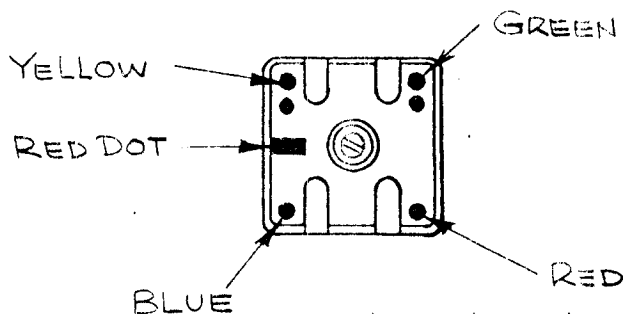
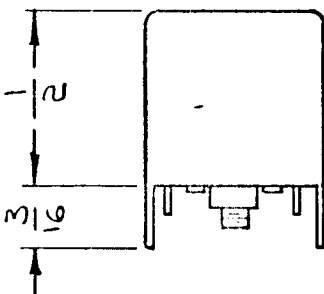
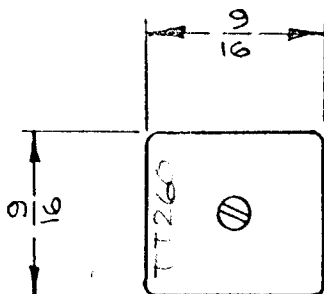
MECHANICAL SPEC.

URNS
PRIMARY: 25
SECONDARY: 25
COLOR CODE: RED
CASE: COPPER CAN
CASE FINISH: TIN-PLATED
QUANTITY TERM: 6
MATERIAL:
CORE & SLUG: POWDERED IRON



SCHEMATIC DIAGRAM

B	RELOC. TT259	12-7-66	17373	RME	QA	REQ. ITEM	PART NO.	DESCRIPTION	SYMBOL
A	PRI. IND WAS 15.5 μ h \pm 0.8 μ h PRI "Q" MIN. FR. WAS 20	7-19-66	16575	RME	QA			THE TECHNICAL MATERIEL CORP. MAMARONECK, NEW YORK	TRANSFORMER RF, ADJ.
O	RELEASER FOR PRODUCTION	5-4-65	X	QJL					
X	EXPER. RELEASE	5-11-65	X	ALA				IF-T4	
SYM	DESCRIPTION	DATE	CH. NO.	DRAFTS	CHECKER	ENG. APP.	MATERIAL		
UNLESS OTHERWISE SPECIFIED DIMENSIONS ARE IN INCHES AND INCLUDE CHEMICALLY APPLIED OR PLATED FINISHES		SCALE		TYPE & TEMPER		HEAT TREAT. SPEC.	DRAWN	CHECKED	FINAL APPROVAL
DECIMALS X \pm .05 XX \pm .01 XXX \pm .005	TOLERANCES	FRACTIONS \pm 1/64 ANGLES \pm 0° 30'	CODE A	2A4272			ALA	JLW 5/13/65	ALA 5/12/65
						FINISH & SPEC. NO.	ELEC. DES. APP.	MECH. DES. APP.	TT259 B



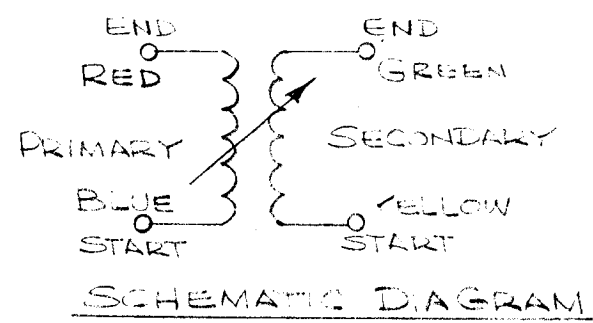
REQ. PER UNIT	USED ON			TT260	C
	MODEL	ASSY. NO.	DATE		
4	CMRA-1	A4220	5-11-65		

ELECTRICAL SPECS.
(w/o SLUG)

OPERATING FREQUENCY:
INDUCTANCE @ 1.75 MC
PRIMARY: $9.5 \mu h \pm 1.0 \mu h$
SECONDARY: NOT RATED
"Q" (PRIMARY) @ 1.75 MC MIN 15

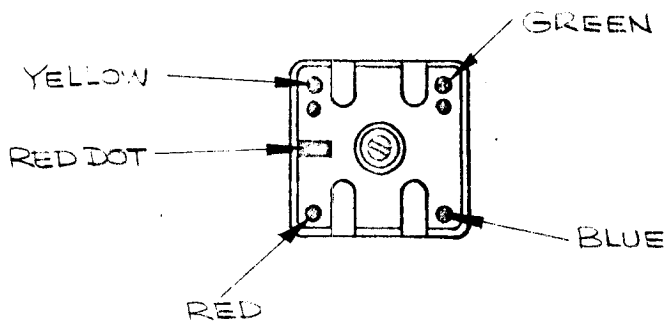
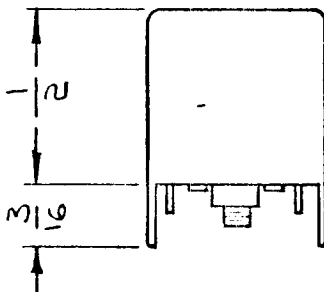
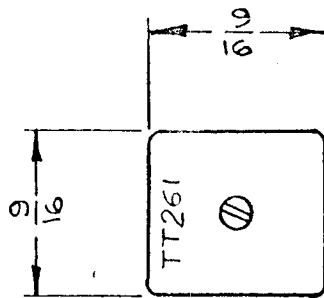
MECHANICAL SPEC.

URNS
PRIMARY: 70
SECONDARY: 35
COLOR CODE: RED
CASE: COPPER CAN
CASE FINISH: TIN-PLATED
QUANTITY TERM: 4
MATERIAL:
CORE & SLUG: POWDERED IRON



C	TT260 RELOC	12.20.65	17586	WLD	QPS	QPS
B	"Q" MIN. WAS 20	82366	1577	RME	LB	MA
A	PR. IND. TOL WAS $\pm 0.5 \mu h$	7/7/66	16575	RME	QPS	QPS
Ø	ORIGINAL RELEASE FOR PRODUCTION	5-12-65	X	CJL		
X	EXPER. RELEASE	5-11-65	X	HLA		
SYM	DESCRIPTION	DATE	CH. NO.	DRAFTS	CHECKER	ENG. APP.
UNLESS OTHERWISE SPECIFIED DIMENSIONS ARE IN INCHES AND INCLUDE CHEMICALLY APPLIED OR PLATED FINISHES		SCALE				
DECIMALS .X ± .05 .XX ± .01 .XXX ± .005	TOLERANCES	FRACTIONS ± 1/64 ANGLES ± 0° 30'	CODE A	2A4273		

REQ. ITEM	PART NO.	DESCRIPTION	SYMBOL
—	—	THE TECHNICAL MATERIEL CORP. MAMARONECK. NEW YORK	
—	—	TRANSFORMER, RF, ADJ.	
—	—	IF-T5	
—	—	DRAWN	5/13/66
—	—	CHECKED	3/4/66
—	—	FINAL APPROVAL	
—	—	ELEC. DES. APP.	
—	—	MECH. DES. APP.	
—	—	TT260	C



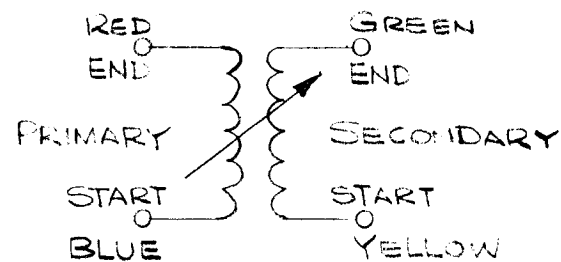
REQ. PER UNIT	USED ON			TT261	B
	MODEL	ASSY. NO.	DATE		
4	CMRA-1	A4220	5-11-65		

ELECTRICAL SPECS.
(W/O SLUG)

OPERATING FREQUENCY:
INDUCTANCE @ 1.75 Mc
PRIMARY: $9.5 \mu h \pm 1.0 \mu h$
SECONDARY: NOT RATED
"Q" (PRIMARY) @ 1.75 MC MIN. 15

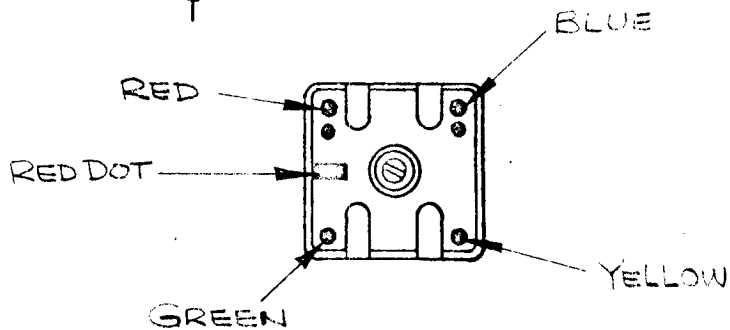
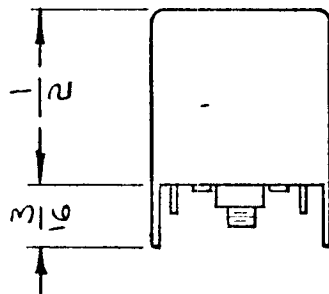
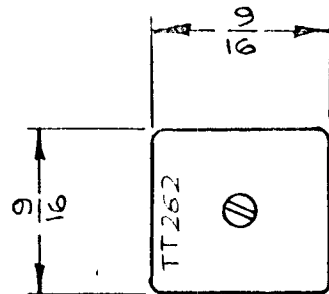
MECHANICAL SPEC.

URNS
PRIMARY: 70
SECONDARY: 30
COLOR CODE: RED
CASE: COPPER CAN
CASE FINISH: TIN-PLATED
QUANTITY TERM:
MATERIAL:
CORE & SLUG: POWDERED IRON



SCHMATIC DIAGRAM

B	CHG. STAMP	8/31/72	20562	GE	A	A	REQ. ITEM	PART NO.	DESCRIPTION	SYMBOL				
A	PRINTING TOL. WAS 0.015 & MIN. WAS 0.03	7							THE TECHNICAL MATERIEL CORP. MAMARONECK, NEW YORK					
Ø	ORIGINAL RELEASE FOR PRODUCTION	5-11-65	X	026					TRANSFORMER RF, ADJ.					
X	EXPER. RELEASE	5-11-65	X	4A					IF - TG					
SYM	DESCRIPTION	DATE	CH. NO.	DRAFTS	CHECKER	ENG. APP.								
UNLESS OTHERWISE SPECIFIED DIMENSIONS ARE IN INCHES AND INCLUDE CHEMICALLY APPLIED OR PLATED FINISHES		SCALE												
DECIMALS X ± .05 XX ± .01 XXX ± .005	TOLERANCES	FRACTIONS ± 1/64 ANGLES, ± 0° 30'	CODE A	2A427A					DRAWN JLA	CHECKED JLA 5/12/65	FINAL APPROVAL Miller 5/14/65			
								TYPE & TEMPER	HEAT TREAT. SPEC.	FINISH & SPEC. NO.	ELEC. DES. APP.	MECH. DES. APP.	TT261	B



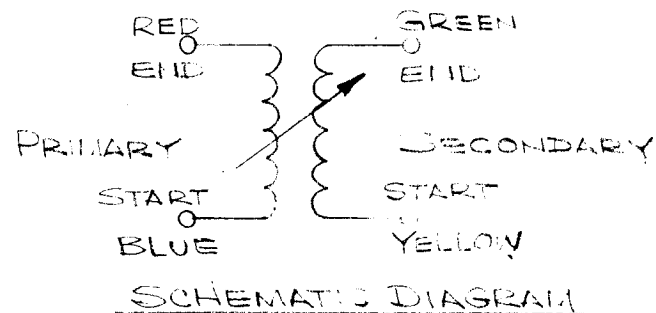
REQ. PER UNIT	USED ON		TT262	B
	MODEL	ASSY. NO.		
4	CMRA-1	A4220	5-11-65	

ELECTRICAL SPECS.
(W/O SLUG)

OPERATING FREQUENCY:
INDUCTANCE @ 2.5 MC
PRIMARY: $17.5 \mu h \pm .5 \mu h$
SECONDARY: NOT RATED
"Q" (PRIMARY) @ 2.5 MC MIN/0.

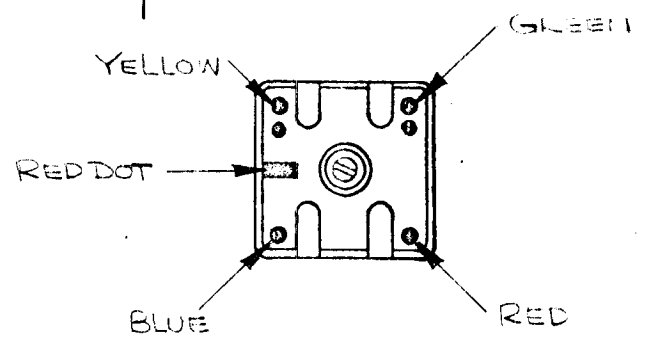
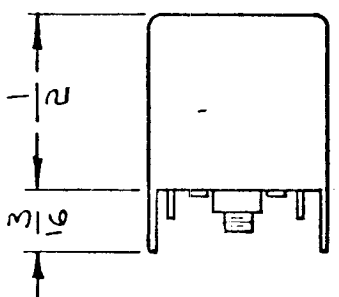
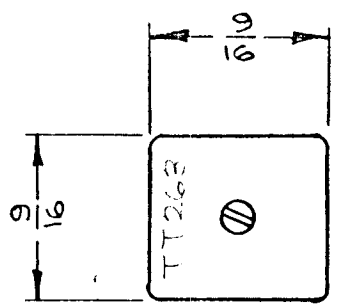
MECHANICAL SPEC.

TURNS
PRIMARY: 66
SECONDARY: 66
COLOR CODE: RED
CASE: COPPER CAN
CASE FINISH: TIN-PLATED
QUANTITY TERM: 4
MATERIAL:
CORE & SLUG: POWDERED IRON



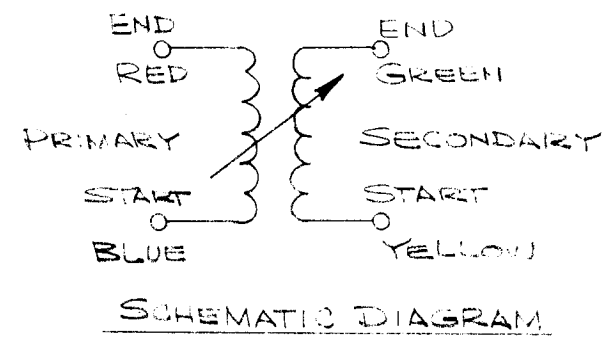
SYMBOL	DESCRIPTION	DATE	CH. NO.	DRAFTS	CHECKER	ENG. APP.	REQ. ITEM	PART NO.	DESCRIPTION	SYMBOL	
B	CHG POSITION OF STAMPING FOR TT262	8/31/72	20962	GE	CL	CL			THE TECHNICAL MATERIEL CORP. MAMARONECK, NEW YORK TRANSFORMER, RF, ADJ. IF-T7		
A	1/2 SIZE ADVISED		14877	AK	Q/B						
Ø	ORIGINAL RELEASE FOR PRODUCTION	5-11-65	X	W/L							
X	EXPER. RELEASE	5-11-65	X	W/L							
UNLESS OTHERWISE SPECIFIED DIMENSIONS ARE IN INCHES AND INCLUDE CHEMICALLY APPLIED OR PLATED FINISHES							SCALE				
DECIMALS .X ± .05 .XX ± .01 .XXX ± .005	TOLERANCES	FRACTIONS ± 1/64 ANGLES ± 0° 30'	CODE A	2A4275			TYPE & TEMPER	HEAT TREAT. SPEC.	DRAWN	CHECKED	FINAL APPROVAL
										TT262	B

REQ. PER UNIT	USED ON		TT 263	B
	MODEL	ASS'Y. NO.		
1	CMRA-1	A4216	5-11-65	



ELECTRICAL SPECS.
(w/o SLUG)
OPERATING FREQUENCY:
INDUCTANCE @ 1.75 Mc
PRIMARY: $10\mu h \pm 1.0\mu h$
SECONDARY: NOT RATED
"Q" (PRIMARY) @ 1.75 Mc MIN 40

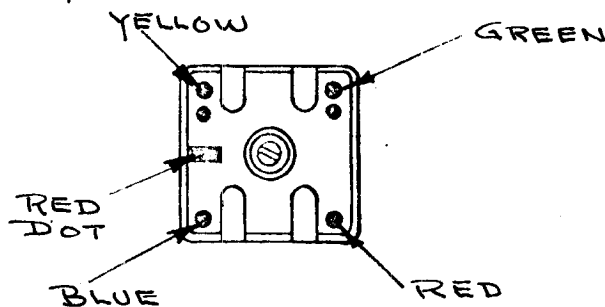
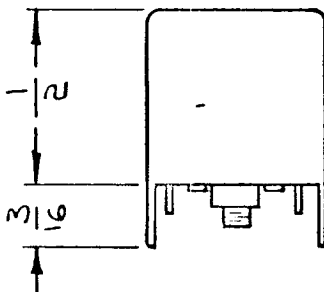
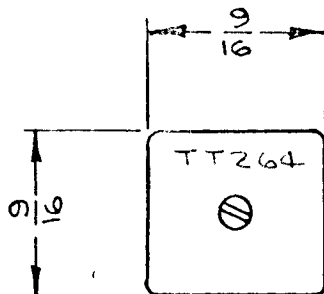
MECHANICAL SPEC.
TURNS
PRIMARY: 70
SECONDARY: 5
COLOR CODE: RED
CASE: COPPER CAN
CASE FINISH: TIN-PLATED
QUANTITY TERM: 4
MATERIAL:
CORE & SLUG: POWDERED IRON



REQ. ITEM	PART NO.	DESCRIPTION	SYMBOL
1	CMRA-1	TRANSFORMER, RF, ADJ.	
STOCK SIZE		THE TECHNICAL MATERIEL CORP. MAMARONECK, NEW YORK	
MATERIAL		SYN-A-TI	
TYPE & TEMPER		DRAWN	CHECKED
HEAT TREAT. SPEC.		FINAL APPROVAL	
FINISH & SPEC. NO.		ELEC. DES. APP.	MECH. DES. APP.

DESCRIPTION	DATE	CH. NO.	DRAFTS	CHECKER	ENG. APP.
TT263 RELOC.	12-30-66	17586	6410	J.P.S.	
PRI. IND WAS 10-5uH	7-19-65	1577	517	J.P.S.	
OPERATIONAL RELEASE FOR PRODUCTION	5-14-65	X	CLC		
EXPER. RELEASE	5-11-65	X	HLA		

UNLESS OTHERWISE SPECIFIED DIMENSIONS ARE IN INCHES AND INCLUDE CHEMICALLY APPLIED OR PLATED FINISHES	SCALE	CODE	LA 4211
DECIMALS X ± .05 XX ± .01 XXX ± .005	FRACTIONS ± 1/64 ANGLES, ± 0° 30'	A	
TOLERANCES			



REQ. PER UNIT	USED ON			TT264	A
	MODEL	ASS'Y. NO.	DATE		
1	CMRA-1	A421G	5-13-65		

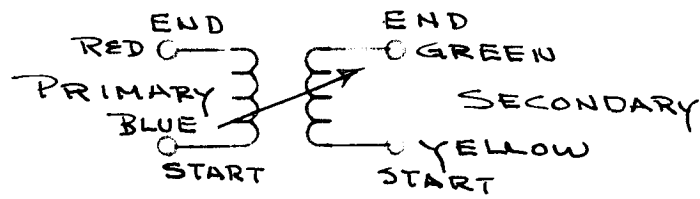
ELECTRICAL SPECS.
w/o SLUG

OPERATING FREQUENCY:
INDUCTANCE @ 1.75 Mc
PRIMARY: $9.5 \mu h \pm 1.0 \mu h$
SECONDARY: NOT RATED
"Q" (PRIMARY) @ 1.75 Mc, MIN 15

MECHANICAL SPEC.

URNS

PRIMARY: 70
SECONDARY: 5
COLOR CODE: RED
CASE: COPPER CAN
CASE FINISH: TIN-PLATED
QUANTITY TERM: 4
MATERIAL:
CORE & SLUG: POWDERED IRON



REQ. ITEM	PART NO.	DESCRIPTION	SYMBOL
—	—	THE TECHNICAL MATERIEL CORP. MAMARONECK, NEW YORK	
—	STOCK SIZE	TRANSFORMER, RF ADJ.	
—	MATERIAL	SYN-A-T2	
—	—	H.L.A. <i>JL</i> 5/13/65	MIN 5/14/65
—	TYPE & TEMPER	DRAWN	CHECKED
—	HEAT TREAT. SPEC.		FINAL APPROVAL
—	FINISH & SPEC. NO.	ELEC. DES. APP.	MECH. DES. APP.
			TT264 A

UNLESS OTHERWISE SPECIFIED
DIMENSIONS ARE IN INCHES AND INCLUDE
CHEMICALLY APPLIED OR PLATED FINISHES

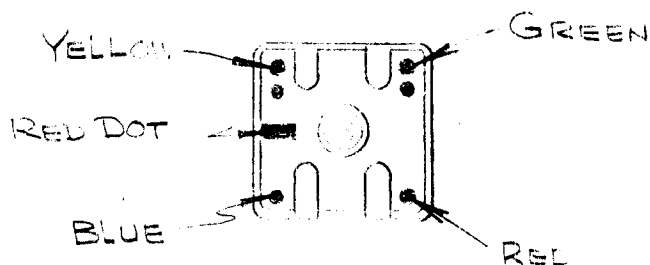
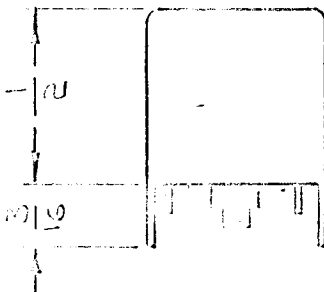
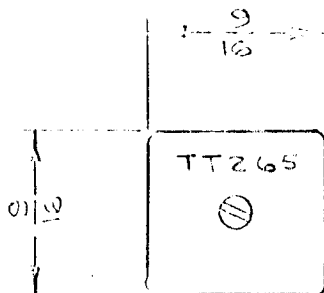
SCALE

DECIMALS
X ± .05
XX ± .01
XXX ± .005

FRACTIONS
± 1/64
ANGLES
± 0° 30'

CODE
A

2A4278



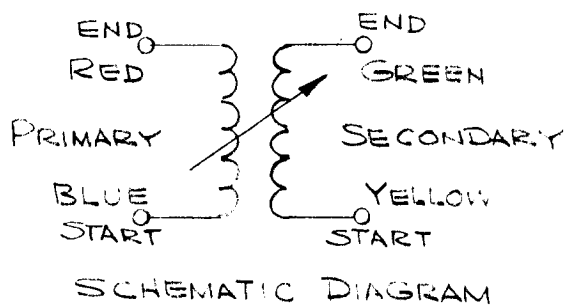
REQ. PER UNIT	USED ON		TT265	E
	MODEL	ASBY. NO.		
1	CMRA-1	A4216	5-11-65	

ELECTRICAL SPECS.
(W/O SLUG)

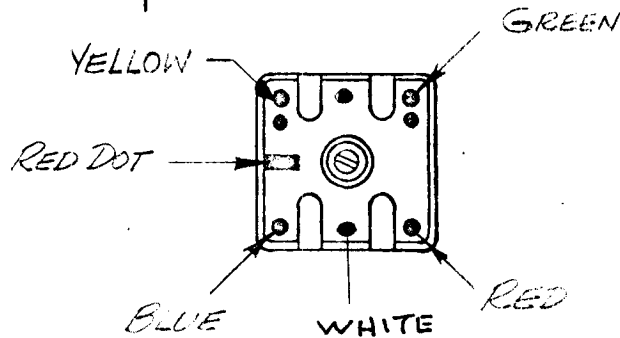
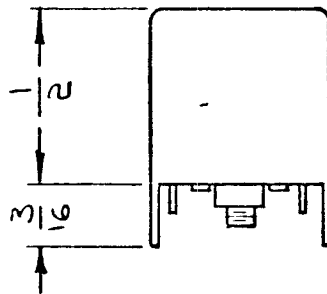
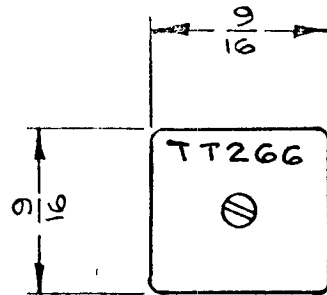
OPERATING FREQUENCY:
INDUCTANCE @ 7.9mc
PRIMARY: 3.00 μ h \pm .30 μ h
SECONDARY: NOT RATED
"Q" (PRIMARY) @ 7.9mc Min. 50

MECHANICAL SPEC.

TURNS
PRIMARY: 28
SECONDARY: 4
COLOR CODE: RED
CASE: COPPER CAN
CASE FINISH: TIN-PLATED
QUANTITY TERM: 4
MATERIAL:
CORE & SLUG: POWDERED IRON



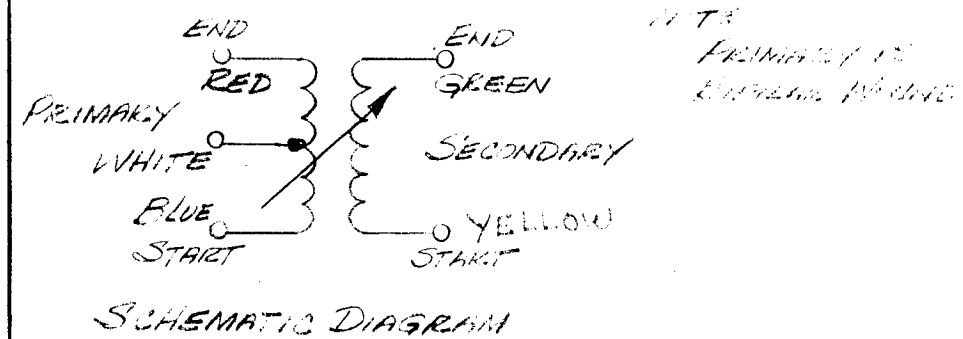
SYM	DESCRIPTION	DATE	CH. NO.	DRAFTS	CHECKER	ENG. APP.	REQ. ITEM	PART NO.	DESCRIPTION	SYMBOL	
B	IND. VARI. B. FOR								THE TECHNICAL MATERIEL CORP. HAMARONECK, NEW YORK TRANSFORMER, RF, ADJ. SYN-A-73	TT265 E	
A	PRI. IND. WAS \pm 0.17 μ h	7/10/65	16571	RME							
\emptyset	ORIGINAL RELEASE FOR PRODUCTION	5/10/65	X	CUL							
X	EXPER. RELEASE	5/11/65	X	SLA							
UNLESS OTHERWISE SPECIFIED DIMENSIONS ARE IN INCHES AND INCLUDE CHEMICALLY APPLIED OR PLATED FINISHES		SCALE									
DECIMALS X \pm .05 XX \pm .01 XXX \pm .005	TOLERANCES	FRACTIONS \pm 1/64 ANGLES \pm 0° 30'	CODE A	2A4260							
							FINISH & SPEC. NO.				
									DRAWN	CHECKED	FINAL APPROVAL
									H.L.H.	JAN 5/13/65	M. 5/14/65



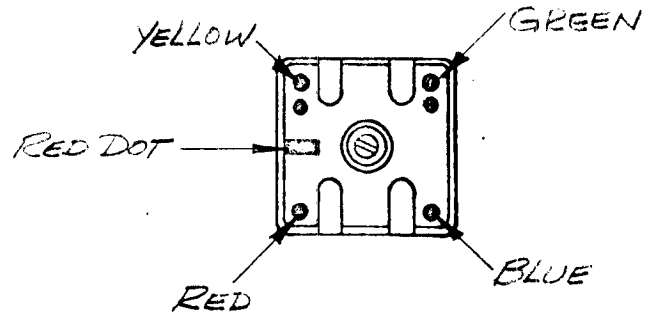
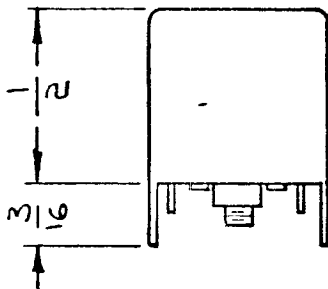
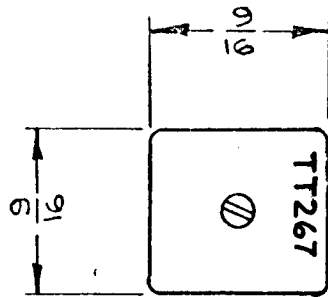
REQ. PER UNIT	USED ON			TT266	A
	MODEL	ASSY. NO.	DATE		
1	CMRA-1	A4218	5-13-65		

ELECTRICAL SPECS.
(W/O SLUG)
OPERATING FREQUENCY:
INDUCTANCE @ 1.75 MHz
PRIMARY: 10 μ h \pm 1.0 μ h
SECONDARY: NOT RATED
"Q" (PRIMARY) @ 1.75 MC Min. 40

MECHANICAL SPEC.
TURNS
PRIMARY: 35
SECONDARY: 15
COLOR CODE: RED
CASE: COPPER CAN
CASE FINISH: TIN-PLATED
QUANTITY TERM: 6
MATERIAL:
CORE & SLUG: POWDERED IRON



REQ.	ITEM	PART NO.	DESCRIPTION				SYMBOL
		—A—	THE TECHNICAL MATERIEL CORP.				
		STOCK SIZE	MAMARONECK, NEW YORK				
		—A—	TRANSFORMER, RF, ADJ.				
		MATERIAL	SYN-B-T2				
UNLESS OTHERWISE SPECIFIED DIMENSIONS ARE IN INCHES AND INCLUDE CHEMICALLY APPLIED OR PLATED FINISHES		SCALE	DRAWN				
DECIMALS .X \pm .05 .XX \pm .01 .XXX \pm .005	TOLERANCES	FRACTIONS \pm 1/64 ANGLES \pm 0° 30'	CODE A	2A4265	DATE 5/14/65	CHECKED 5/14/65	FINAL APPROVAL 5/14/65
							TT266
							A



REQ. PER UNIT	USED ON		TT267 B
	MODEL	DATE	
1	CMRA-1	5-13-65	

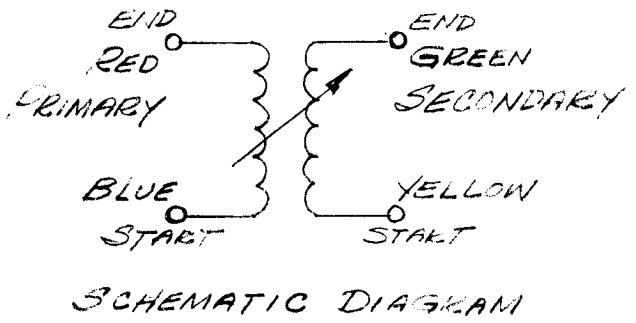
ELECTRICAL SPECS.
(W/O SLUG)

OPERATING FREQUENCY:
INDUCTANCE @ 1.75 MHz
PRIMARY: 9.5 μ H \pm 1.0 μ H
SECONDARY: NOT RATED
"Q" (PRIMARY) @ 1.75 MHz Min. 15

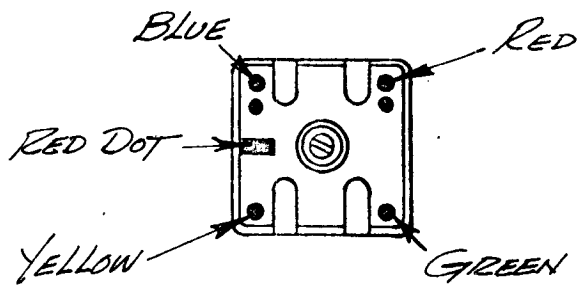
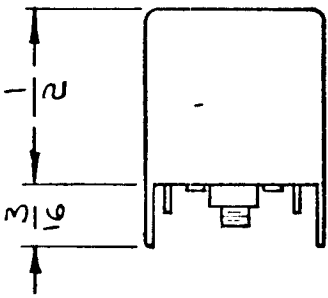
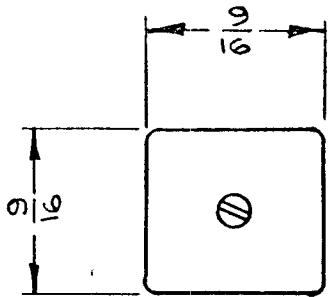
MECHANICAL SPEC.

URNS

PRIMARY: 70
SECONDARY: 5
COLOR CODE: RED
CASE: COPPER CAN
CASE FINISH: TIN-PLATED
QUANTITY TERM: 4
MATERIAL:
CORE & SLUG: POWDERED IRON



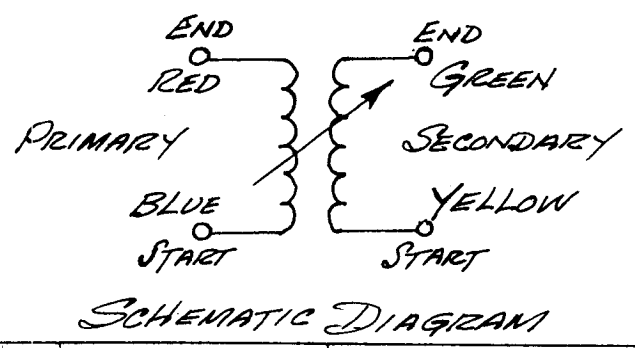
B	RELOC. TT267	12-7-66	17373	RME	Q/B	REQ. ITEM	PART NO.	DESCRIPTION	SYMBOL		
A	ELEC. SPECS. REVISED	7-1-65	16577		Q/B		—A—	THE TECHNICAL MATERIEL CORP. MAMARONECK, NEW YORK			
Ø	ORIG. RELEASE	5/14/65	7				STOCK SIZE		TRANSFORMER, RF. ADJ.		
X	EXPER. RELEASE	5-13-65	X	HLA			—A—		SYN-B-T3		
SYM	DESCRIPTION	DATE	CH. NO.	DRAFTS	CHECKER	ENG. APP.	MATERIAL				
UNLESS OTHERWISE SPECIFIED DIMENSIONS ARE IN INCHES AND INCLUDE CHEMICALLY APPLIED OR PLATED FINISHES		SCALE				TYPE & TEMPER		HEAT TREAT. SPEC.	DRAWN	CHECKED	FINAL APPROVAL
DECIMALS .X \pm .05 .XX \pm .01 .XXX \pm .005	TOLERANCES	FRACTIONS \pm 1/64 ANGLES \pm 0° 30'	CODE A	2A42GG		—A—		HLA	5/14/65	5/14/65	TT267 B
						FINISH & SPEC. NO.		ELEC. DES. APP.	MECH. DES. APP.		



REQ. PER UNIT	USED ON			TT268	A
	MODEL	ASSY. NO.	DATE		
1	CMRA-1	A4218	5-13-65		

ELECTRICAL SPECS.
(W/O SLUG)
OPERATING FREQUENCY:
INDUCTANCE @ 1.75 MHz
PRIMARY: 9.5 μ h \pm 1.0 μ h
SECONDARY: NOT RATED
"Q" (PRIMARY) @ 1.75 MHz Min. 15

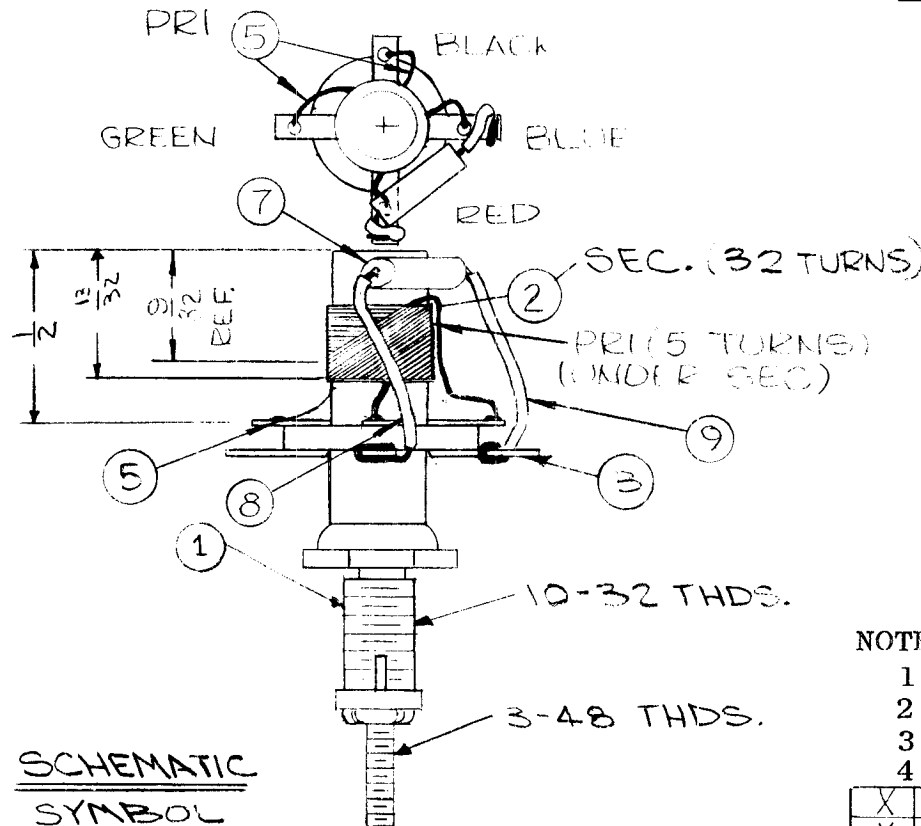
MECHANICAL SPEC.
TURNS
PRIMARY: 70
SECONDARY: 5
COLOR CODE: RED
CASE: COPPER CAN
CASE FINISH: TIN-PLATED
QUANTITY TERM: 4
MATERIAL:
CORE & SLUG: POWDERED IRON



REQ. ITEM	PART NO.	DOSE	DESCRIPTION	SYMBOL									
A	ELEC. SP. REVISED	7-18-65	165073	RME Q/10	THE TECHNICAL MATERIEL CORP. MAMARONECK, NEW YORK TRANSFORMER, RF. ADJ. SYN-B-T4								
Ø	ORIGINAL RELEASE FOR PRODUCTION	5/21/65	HLA										
X	EXPER. RELEASE	5-13-65	X HLA										
SYM	DESCRIPTION	DATE	CH. NO.	DRAFTS	CHECKER	ENG. APP.	MATERIAL	TYPE & TEMPER	HEAT TREAT. SPEC.	DRAWN	CHECKED	FINAL APPROVAL	
UNLESS OTHERWISE SPECIFIED DIMENSIONS ARE IN INCHES AND INCLUDE CHEMICALLY APPLIED OR PLATED FINISHES		SCALE		TYPE & TEMPER		HEAT TREAT. SPEC.		DRAWN		CHECKED		FINAL APPROVAL	
DECIMALS X \pm .05 XX \pm .01 XXX \pm .005		FRACTIONS \pm 1/64 ANGLES \pm 0° 30'		CODE A		2A4267		HLA		JPB		5/21/65	
TOLERANCES		SCALE		TYPE & TEMPER		HEAT TREAT. SPEC.		DRAWN		CHECKED		FINAL APPROVAL	
												TT268 A	

REQ. PER UNIT	USED ON		
	MODEL	ASS'Y. NO.	DATE
1	CHG-3	A2945	7-26-65

TT269C



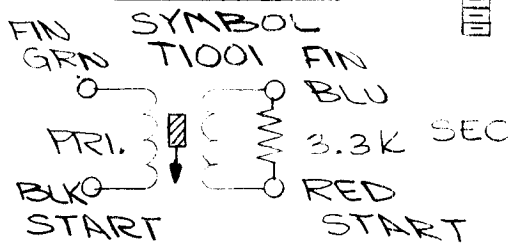
WINDING DATA

1. SECURE TERMINAL COLLAR TO COIL FORM WITH Q-MAX.
2. WIND PRIMARY 9/32 FROM TOP OF COIL FORM, 5 TURNS (WINDINGS NOT SHOWN)
3. WIND SECONDARY 32 TURNS ON TOP OF PRIMARY, AS SHOWN. STAKE WIRE TO FORM WITH Q-MAX
4. STRIP ENDS SOLDER TO TERMINALS, AS SHOWN
5. BAKE FOR 1/2 HOUR AT 215°F TO REMOVE MOISTURE.
6. COAT COIL WITH Q-MAX AND BAKE FOR 1/2 HOUR AT 215°F.
7. TEST TRANSFORMER AS PER NOTE.
8. MOUNT ITEM 7 AS SHOWN ACROSS RED AND BLUE TERMINALS. DO NOT SOLDER TERMINALS.

NOTE.

1. TEST FREQ. - 7.9MHZ
2. AT MIN. INDUCTANCE = 7.3µH ± 5%
3. Q = 20 MIN.
4. DIST. CAPACITY APPROX 7.2 PF.

SCHEMATIC



WINDING MACHINE DATA

CAM GEAR 90
DRIVER GEAR 94
CAM .250

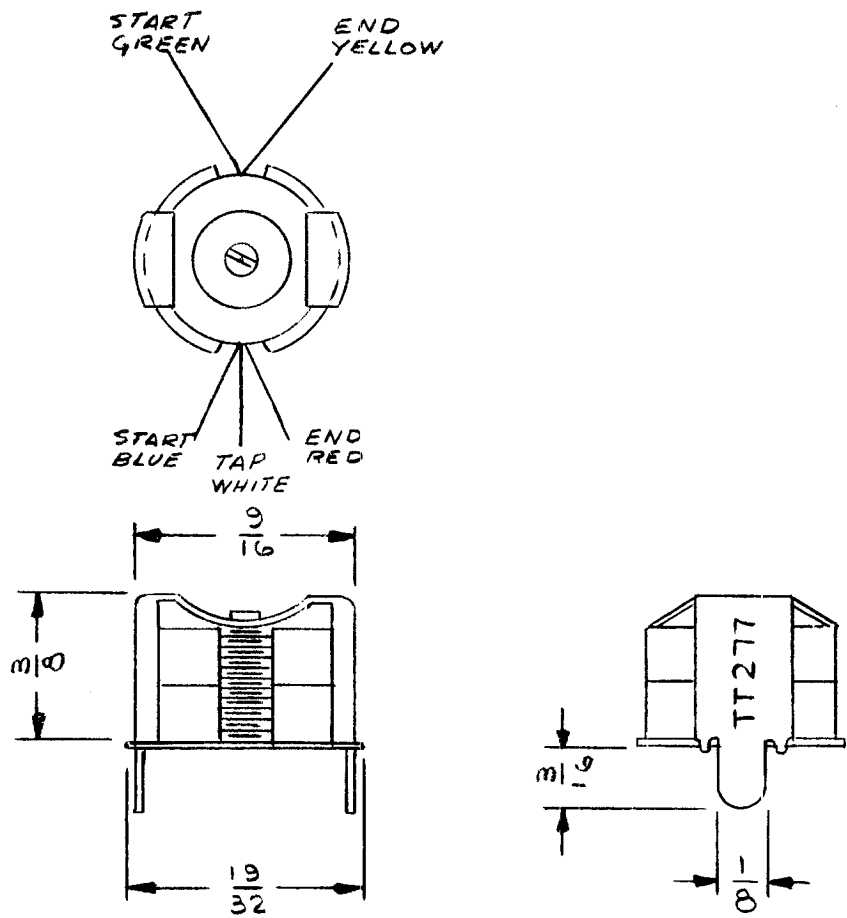
X	9	PX104-6-034	INS, SLV, ELECT	BLUE
X	8	PX104-3-034	INS, SLV, ELECT	RED
I	7	RC20GF332J	RES. CARBON COMP.	
X	6	BS-100	SOLDER, SOFT	
X	5	WI-141-30-9	WIRE, ELEC, MAG.	
X	4	GL-102	Q-MAX	
I	3	TE-195-4	TERMINAL, COLLAR (265ID)	
X	2	WI104-4044-SSPOS	LITZ, SIZE 40/44	
I	1	CF-134-5E	FORM, COIL	

C	WINDING DATA # 8 ADDED DO NOT SOLDER TERMINALS	8-1-66	15686	RME	<i>Q/S</i>	<i>1/18</i>
B	COMP. REVISED	6-20-66	16422	WHD	<i>Q/S</i>	<i>1/18</i>
A	IT. 3 WAS TE 195	10/1/65	1497	N.V.	<i>Q/S</i>	<i>1/18</i>
Ø	ORIGINAL RELEASE	7/21/65		E		
SYM	DESCRIPTION	DATE	CH. NO.	DRAFTS	CHECKER	ENG. APP.
UNLESS OTHERWISE SPECIFIED DIMENSIONS ARE IN INCHES AND INCLUDE CHEMICALLY APPLIED OR PLATED FINISHES		SCALE DO NOT SCALE				
DECIMALS .X ± .05 .XX ± .01 .XXX ± .005	TOLERANCES	FRACTIONS ± 1/64 ANGLES ± 0° 30'	CODE			

REQ.	ITEM	PART NO.	J. ANGER	DESCRIPTION	SYMBOL
				THE TECHNICAL MATERIEL CORP. MAMARONECK, NEW YORK	
				THIN FILM, RF	
				ADJUSTABLE	
				DRAWN <i>Q/S</i>	
				CHECKED	
				FINAL APPROVAL	
				ELEC. DES. APP. <i>Q/S</i>	
				MECH. DES. APP.	
				FINISH & SPEC. NO.	TT269C

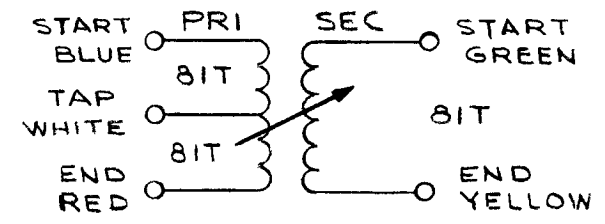
REQ. PER UNIT	USED ON		
	MODEL	ASS'Y. NO.	DATE
1	CDN-3	A4354	2/10/66
1	CDN-3	A4350	2/10/66

TT277 A



ELECTRICAL SPECS.
(WITH SLUG INSERTED)
OPERATING FREQUENCY: 355 kHz
INDUCTANCE @ 250 kHz
PRIMARY: 2.74 mH + & ±.08 mH
SECONDARY: NOT RATED
"Q" (PRIMARY) @ 355 kHz: > 275
MECHANICAL SPEC.

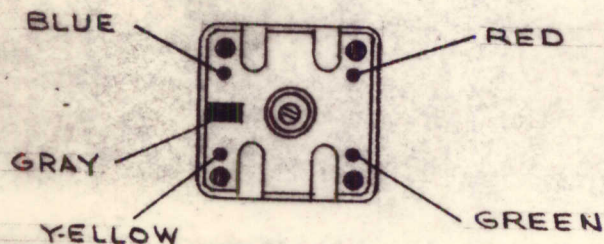
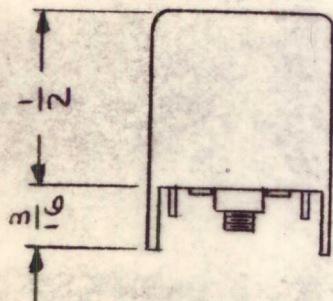
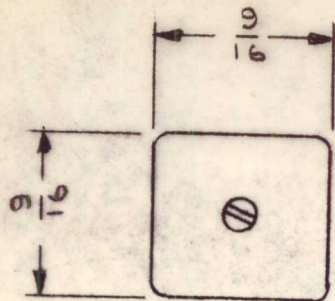
TURNS
PRIMARY: 162 CENTER TAPPED
SECONDARY: 81
RETAINER, BOTTOM: BRASS CAD PLATED
RETAINER, TOP: NICKEL SILVER H/H
MATERIAL:
CORE & SLUG: POWDERED IRON



SCHEMATIC DIAGRAM

SYM	DESCRIPTION	DATE	CH. NO.	DRAFTS	CHECKER	ENG. APP.
A	±.08mH WAS -8	5-23-67	18245			RH
Ø	ORIGINAL RELEASE OR PRODUCTION	2-16-66	Ø			
UNLESS OTHERWISE SPECIFIED DIMENSIONS ARE IN INCHES AND INCLUDE CHEMICALLY APPLIED OR PLATED FINISHES		SCALE				
DECIMALS .X ± .05 .XX ± .01 .XXX ± .005	TOLERANCES	FRACTIONS ± 1/64 ANGLES ± 0° 30'	CODE A	2A4417		

REQ. ITEM	PART NO.	POSE	DESCRIPTION	SYMBOL
—//—			THE TECHNICAL MATERIEL CORP. MAMARONECK, NEW YORK	
	STOCK SIZE		TRANSFORMER, RF, ADJUSTABLE	
—//—				
	MATERIAL			
—//—	—//—	JL	DRAWN	CHECKED
	TYPE & TEMPER	HEAT TREAT. SPEC.	FINAL APPROVAL	
	FINISH & SPEC. NO.	ELEC. DES. APP.	MECH. DES. APP.	TT277 A



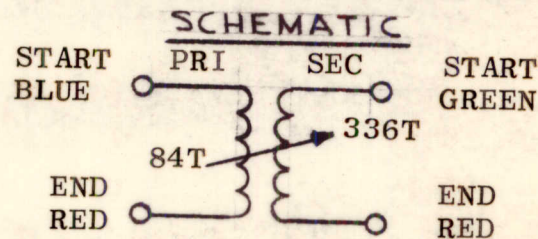
REQ. PER UNIT	USED ON		
	MODEL	ASSY. NO.	DATE
1	CDN-3	A 4354	2/11/66
2	CDN-3	A 4356	2/11/66

TT278

Ø

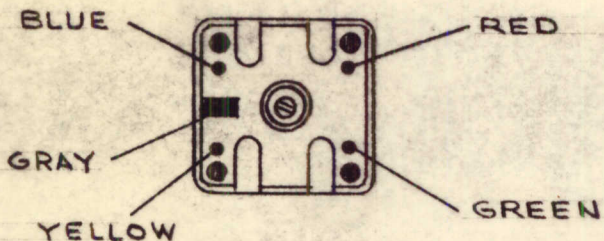
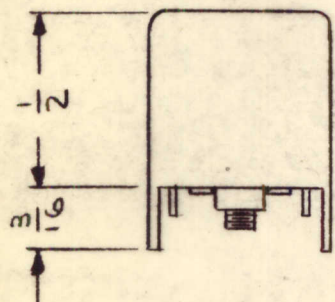
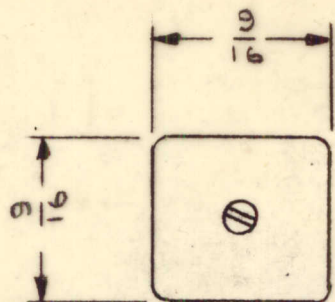
ELECTRICAL SPECS.
 (WITH SLUG INSERTED)
 OPERATING FREQUENCY: 355 KHZ
 INDUCTANCE @ 790 KHZ
 PRIMARY: 112 UH + & - 20 UH
 SECONDARY: NOT RATED
 "Q" (PRIMARY) @ 355 KHZ: > 20

MECHANICAL SPEC.
 TURNS
 PRIMARY: 84
 SECONDARY: 336
 COLOR CODE: GRAY
 CASE: COPPER CAN
 CASE FINISH: TIN-PLATED
 QUANTITY TERM: 4
 MATERIAL:
 CORE & SLUG: POWERED IRON



UNLESS OTHERWISE SPECIFIED DIMENSIONS ARE IN INCHES AND INCLUDE CHEMICALLY APPLIED OR PLATED FINISHES		SCALE	
DECIMALS .X ± .05 .XX ± .01 .XXX ± .005	FRACTIONS ± 1/64 ANGLES ± 0° 30'	CODE A	2A4418

REQ. ITEM	PART NO.	POSE	DESCRIPTION	SYMBOL
#	#		THE TECHNICAL MATERIEL CORP. MAMARONECK. NEW YORK	
#	#		TRANSFORMER, RF, ADJUSTABLE	
#	#	J.L.	QCB	M. Han
TYPE & TEMPER	HEAT TREAT. SPEC.	DRAWN	CHECKED	FINAL APPROVAL
#	#	QCB		
FINISH & SPEC. NO.	ELEC. DES. APP.	MECH. DES. APP.	TT278	Ø



REQ. PER UNIT	USED ON			TT 279	Ø
	MODEL	ASS'Y. NO.	DATE		
2	CDN-3	A 4350	2/11/66		

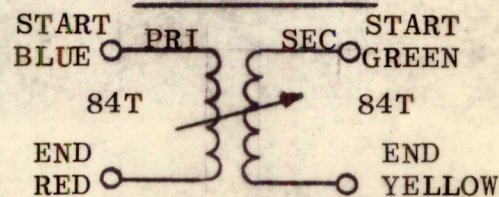
**ELECTRICAL SPECS.
(WITH SLUG INSERTED)**

OPERATING FREQUENCY: 355 KHZ
 INDUCTANCE @ 790 KHZ
 PRIMARY: 115 UH + AND - 15 UH
 SECONDARY: NOT RATED
 "Q" (PRIMARY) @ 355 KHZ: > 80

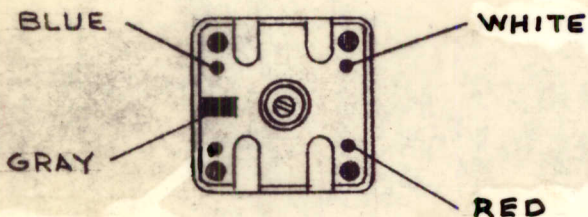
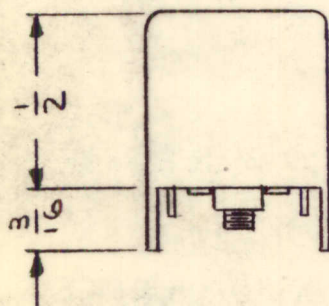
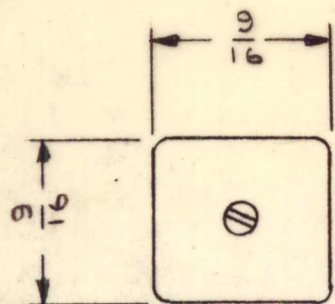
MECHANICAL SPEC.

TURNS
 PRIMARY: 84
 SECONDARY: 84
 COLOR CODE: GRAY
 CASE: COPPER CAN
 CASE FINISH: TIN-PLATED
 QUANTITY TERM: 4
 MATERIAL:
 CORE & SLUG: POWERED IRON

SCHEMATIC



REQ.	ITEM	PART NO.	POSE	DESCRIPTION	SYMBOL			
				THE TECHNICAL MATERIEL CORP. MAMARONECK. NEW YORK				
				TRANSFORMER, RF, ADJUSTABLE				
Ø	ORIGINAL RELEASE FOR PRODUCTION	2-11-66	Ø	<i>MS</i>	<i>HO</i>			
SYM	DESCRIPTION	DATE	CH. NO.	DRAFTS	CHECKER	ENG. APP.		
UNLESS OTHERWISE SPECIFIED DIMENSIONS ARE IN INCHES AND INCLUDE CHEMICALLY APPLIED OR PLATED FINISHES		SCALE						
DECIMALS .X ± .05 .XX ± .01 .XXX ± .005	TOLERANCES	FRACTIONS ± 1/64 ANGLES ± 0° 30'	CODE A	2A4419				
					J.L.	<i>MS</i>	<i>M. H. May</i>	
					DRAWN	CHECKED	FINAL APPROVAL	
					<i>ChRB</i>			
					FINISH & SPEC. NO.	ELEC. DES. APP.	MECH. DES. APP.	
							TT 279	Ø



REQ. PER UNIT	USED ON			TT280	Ø
	MODEL	ASS'Y. NO.	DATE		
1	CDN-3	A 4351	2/11/66		

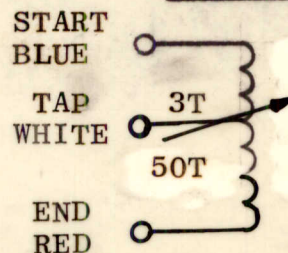
**ELECTRICAL SPECS.
(WITH SLUG INSERTED)**

OPERATING FREQUENCY: 455 KHZ
 INDUCTANCE @ 2.5 MHZ
 PRIMARY: 38 UH + & - 5 UH
 SECONDARY: NOT RATED
 "Q" (PRIMARY) @ 455 KHZ: > 65

MECHANICAL SPEC.

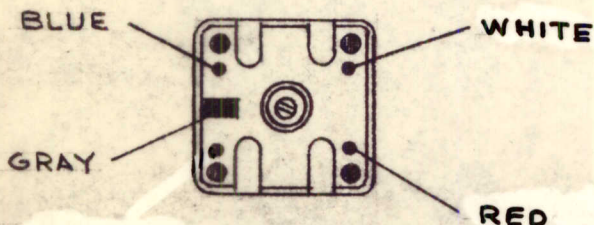
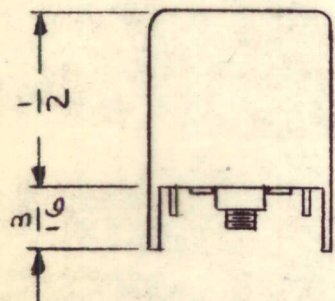
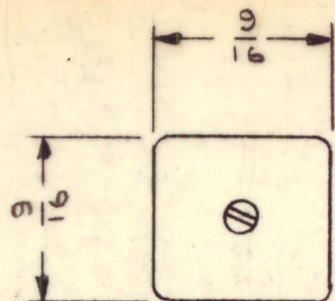
TURNS
 PRIMARY: 53 TAPPED AT 3
 SECONDARY:
 COLOR CODE: GRAY
 CASE: COPPER CAN
 CASE FINISH: TIN-PLATED
 QUANTITY TERM: 4
 MATERIAL:
 CORE & SLUG: POWERED IRON

SCHEMATIC



Ø	ORIGINAL RELEASE FOR PRODUCTION	2-16-66	Ø	ABS		JL
SYM.	DESCRIPTION	DATE	CH. NO.	DRAFTS	CHECKER	ENG. APP.
	UNLESS OTHERWISE SPECIFIED DIMENSIONS ARE IN INCHES AND INCLUDE CHEMICALLY APPLIED OR PLATED FINISHES	SCALE				
	DECIMALS .X ± .05 .XX ± .01 .XXX ± .005	FRACTIONS ± 1/64 ANGLES ± 0° 30'	CODE A	2A4420		

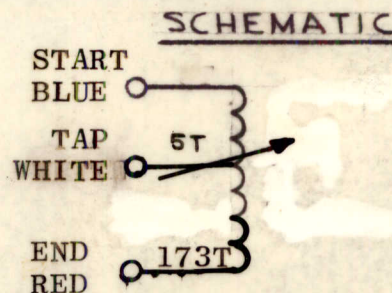
REQ. ITEM	PART NO.	POSE	DESCRIPTION	SYMBOL
—//—	—//—		THE TECHNICAL MATERIEL CORP. MAMARONECK. NEW YORK	
	STOCK SIZE		TRANSFORMER, RF, ADJUSTABLE	
	—//—			
	MATERIAL			
—//—	—//—	J.L.	<i>[Signature]</i>	<i>[Signature]</i>
TYPE & TEMPER	HEAT TREAT. SPEC.	DRAWN	CHECKED	FINAL APPROVAL
—//—	—//—	<i>[Signature]</i>		
FINISH & SPEC. NO.	ELEC. DES. APP.	MECH. DES. APP.	TT280	Ø



REQ. PER UNIT	USED ON			TT282	Ø
	MODEL	ASS'Y. NO.	DATE		
1	CDN-3	A 4352	2/11/66		

ELECTRICAL SPECS.
 (WITH SLUG INSERTED)
 OPERATING FREQUENCY: 100 KHZ
 INDUCTANCE @ 790 KHZ
 PRIMARY: 450 UH + & - 15 UH
 SECONDARY: NOT RATED
 "Q" (PRIMARY) @ 100 KHZ: > 55

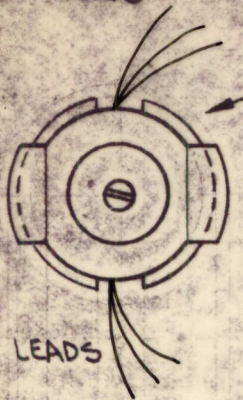
MECHANICAL SPEC.
 TURNS
 PRIMARY: 178 TAPPED AT 5
 SECONDARY:
 COLOR CODE: GRAY
 CASE: COPPER CAN
 CASE FINISH: TIN-PLATED
 QUANTITY TERM: 4
 MATERIAL:
 CORE & SLUG: POWERED IRON



				REQ. ITEM	PART NO.	POSE	DESCRIPTION	SYMBOL	
				STOCK SIZE		THE TECHNICAL MATERIEL CORP. MAMARONECK. NEW YORK			
				MATERIAL		TRANSFORMER, RF, ADJUSTABLE			
UNLESS OTHERWISE SPECIFIED DIMENSIONS ARE IN INCHES AND INCLUDE CHEMICALLY APPLIED OR PLATED FINISHES		SCALE							
DECIMALS .X ± .05 .XX ± .01 .XXX ± .005	TOLERANCES	FRACTIONS ± 1/64 ANGLES ± 0° 30'	CODE A	2A4422	DATE 2-16-66	CH. NO.	DRAFTS	CHECKER Hde	ENG. APP.
				TYPE & TEMPER	HEAT TREAT. SPEC.	J.L.	QCB	M. May	
				FINISH & SPEC. NO.		DRAWN QAB	CHECKED	FINAL APPROVAL TT282	

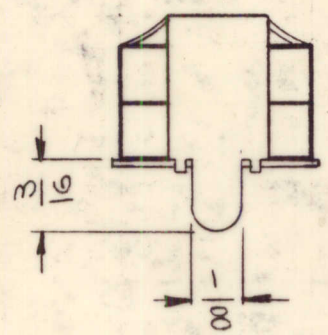
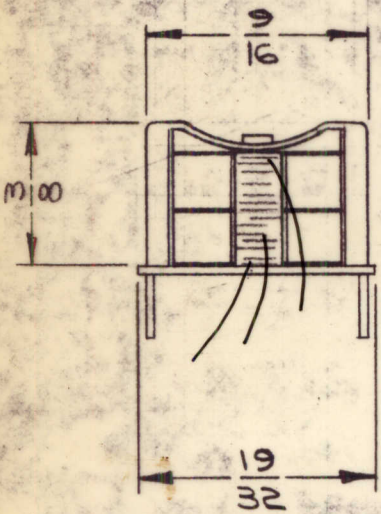
REQ. PER UNIT	USED ON			TT283	A
	MODEL	ASSY. NO.	DATE		
1	CFA-2	A4353	5-25-66		

SECONDARY LEADS



STAMP TMC PART NO.,
3/32 HIGH GOTHIC, WITH
LATEST REVISION LETTER.

PRIMARY LEADS

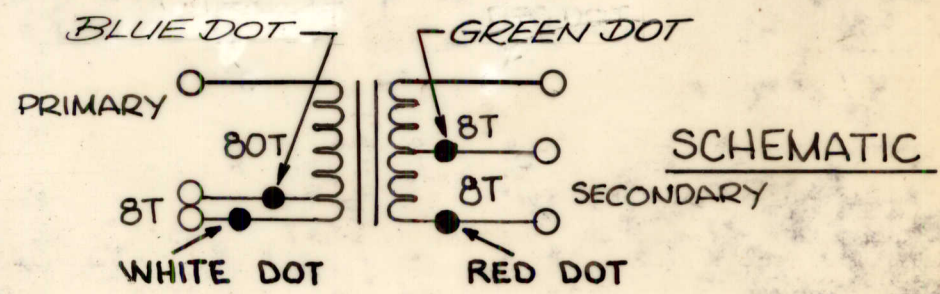


ELECTRICAL SPECIFICATIONS WITH SLUG

PRIMARY IND: 1.36MH ±5%
DC RESISTANCE: APPROX. 1.2Ω
UNLOADED Q: 140 MINIMUM @250KC
SECONDARY: TURNS RATIO 30.25:1
DC RESISTANCE: APPROX. 0.3Ω

MECHANICAL SPECIFICATIONS

TURNS
PRIMARY: 88 TURNS TAPPED AT 8 TURNS
SECONDARY: 16 TURNS CENTER TAPPED
RETAINER, BOTTOM: BRASS CAD PLATED
RETAINER, TOP: NICKEL SILVER H/H
MATERIAL:
CORE & SLUG: POWDERED IRON



A	BLUE & GREEN DOT ADD.	4/29/70	19835	KL	MB	
Ø	ORIGINAL RELEASE FOR PRODUCTION	9/26/66	Ø	CV		
X ₂	RELOC. RED & WHITE DOTS	9-15-66	X ₂	BME		
XI	UNLOADED Q WAS 150 MIN. ASS'Y REF WAS A4458	8-3-66	-M	Jc	MB	
X	EXPER. RELEASE	5/25/66	X	Q. Sen		
SYM	DESCRIPTION	DATE	CH. NO.	DRAFTS	CHECKER	ENG. APP.
UNLESS OTHERWISE SPECIFIED DIMENSIONS ARE IN INCHES AND INCLUDE CHEMICALLY APPLIED OR PLATED FINISHES		SCALE				2:1
DECIMALS .X ± .05 .XX ± .01 .XXX ± .005	TOLERANCES	FRACTIONS ± 1/64 ANGLES ± 0° 30'	CODE A	A4458		

REQ. ITEM	PART NO.	DESCRIPTION	SYMBOL
		THE TECHNICAL MATERIEL CORP. MAMARONECK, NEW YORK	
	STOCK SIZE	TRANSFORMER, R.F.	
	MATERIAL		
TYPE & TEMPER	HEAT TREAT. SPEC.	DRAWN	CHECKED
		Q. Sen	MB 9/24/66
FINISH & SPEC. NO.	ELEC. DES. APP.	MECH. DES. APP.	TT283
			A