

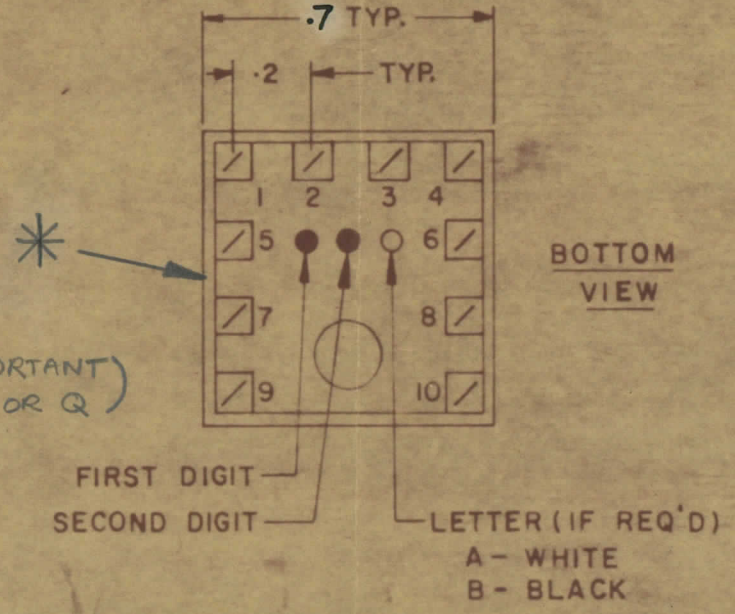
1. UNLESS OTHERWISE SPECIFIED, ALL DIMENSIONS ARE TO BE TAKEN FROM THE UNFINISHED SURFACE OF THE PART UNLESS OTHERWISE SPECIFIED.		2. UNLESS OTHERWISE SPECIFIED, ALL DIMENSIONS ARE TO BE TAKEN FROM THE UNFINISHED SURFACE OF THE PART UNLESS OTHERWISE SPECIFIED.	
3. MAXIMUM ALLOWABLE DIMENSIONAL VARIATIONS HAVE BEEN DETERMINED AND DESIGNATIONS WILL BE MADE FOR POSITION, NUMBER, AND TOLERANCE.		4. UNLESS OTHERWISE SPECIFIED, ALL DIMENSIONS ARE TO BE TAKEN FROM THE UNFINISHED SURFACE OF THE PART UNLESS OTHERWISE SPECIFIED.	
REV.	ITEM	CHANGED FROM	DATE
0		REL TO PROD	MAY 12/68
		AP	

TT10007-44A

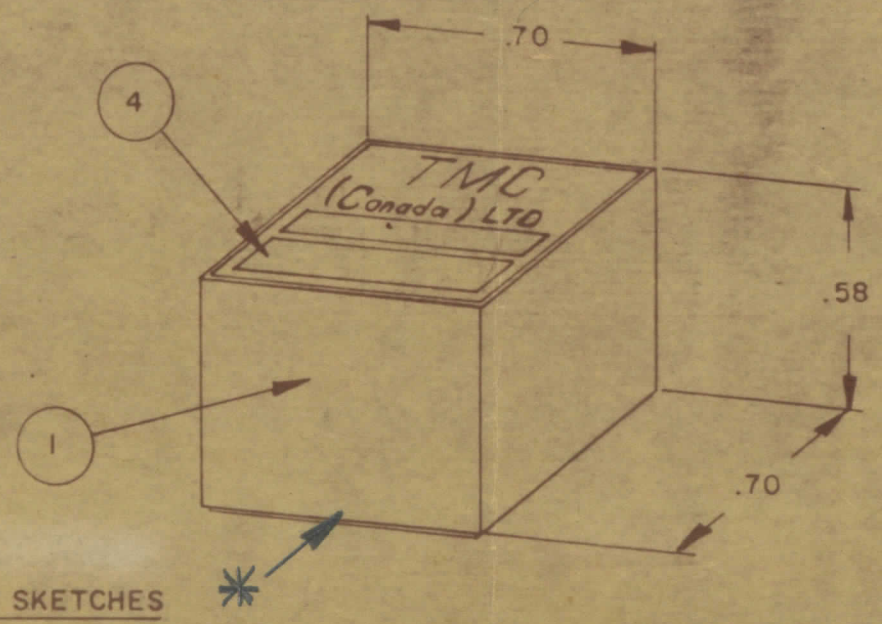
NOTE:-
 1- COLOUR CODE INDICATES LAST TWO DIGITS AND LETTER IN TMC PART NO.
 2- * -INDICATES POSITION OF NAMEPLATE.

ASSEMBLY INSTRUCTIONS:-

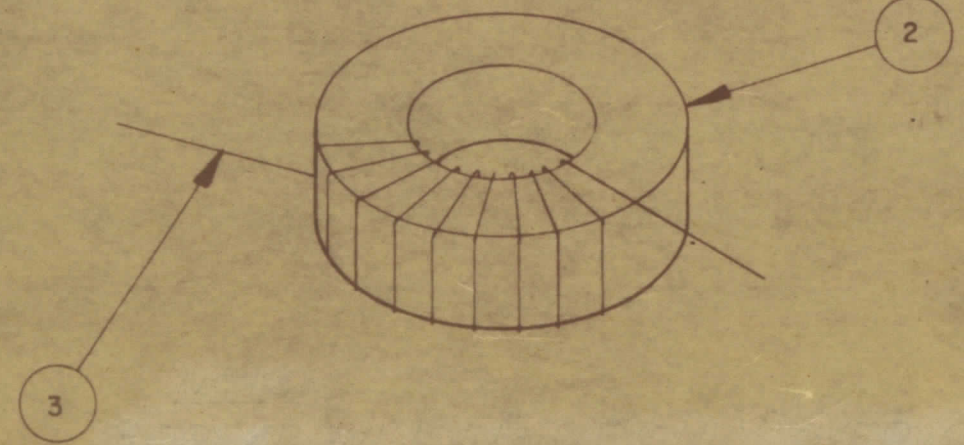
- WIND 8 TURNS OF ITEM 3 AS SHOWN IN SKETCH 1.
- WIND 2 TURNS OF ITEM 3 AS SHOWN IN SKETCH 2.
- WIND _____ TURNS OF ITEM _____ AS SHOWN IN SKETCH 3.
- DIP COIL IN ITEM 5 AND BAKE FOR 1/2 HR. AT 125°F.
- REMOVE _____ TURNS FROM THE PRIMARY IF NECESSARY TO OBTAIN THE FOLLOWING AT TEST FREQ. OF _____
 a) INDUCTANCE IN μH . NO SPEC ±
 b) Q MINIMUM NO SPEC (TURNS RATIO IMPORTANT NOT INDUCTANCE OR Q)
- MAXIMUM NUMBER OF TURNS TO BE REMOVED _____
- MOUNT TRANSFORMER ON BASE & CONNECT WIRES TO CORRESPONDING PINS.
- INSTALL ITEM 7 & _____ BETWEEN PINS 9 & 2.
- INSTALL ITEM _____ & _____ BETWEEN PINS _____ & _____
- INSTALL ITEM _____ BETWEEN PINS _____ & _____
- POT TRANSFORMER USING ITEM 6 AS PER SPEC. S 10149.
- COLOUR CODE BOTTOM OF TRANSFORMER _____
- INSTALL NAMEPLATE.



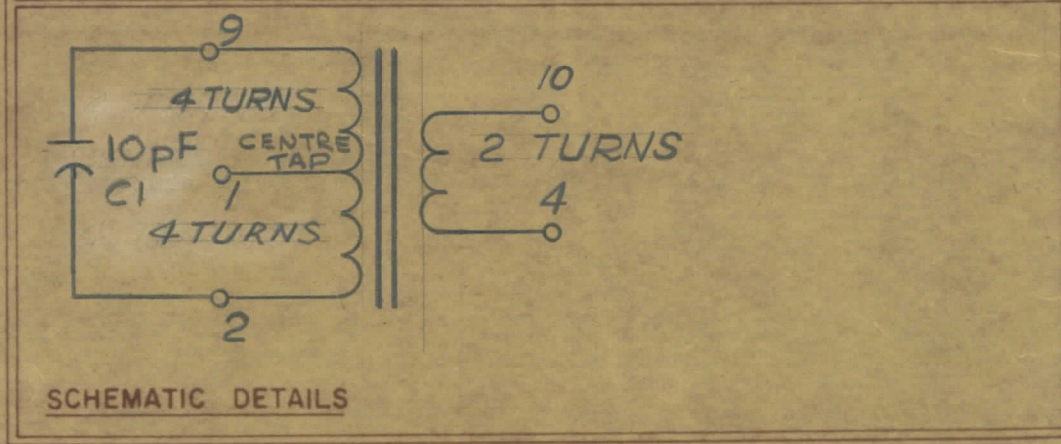
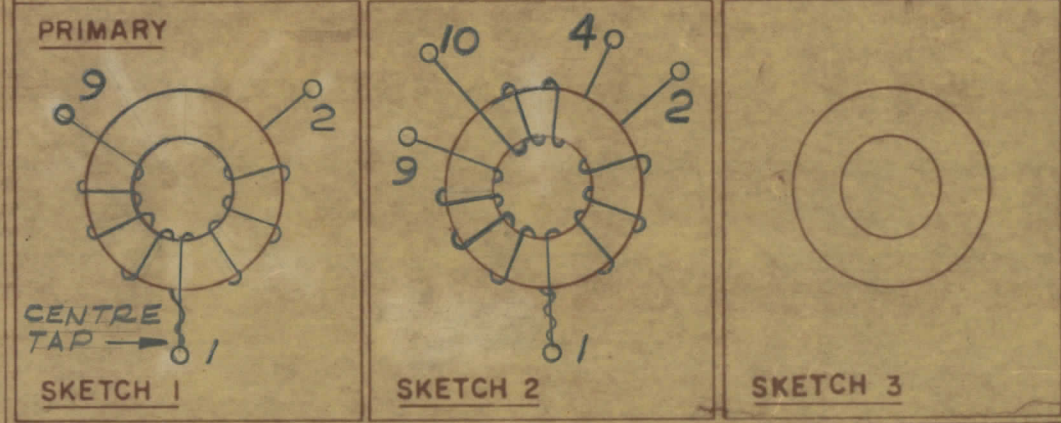
COLOUR CODE MARKING



TYPICAL FOR ALL SKETCHES



DIRECTION OF WINDING TO BE CLOSELY FOLLOWED AS SHOWN IN SKETCHES. ALL LEADS TO BE 1 INCH LONG. TIN LEADS BACK 3/4 INCH.



TMC (Canada) LIMITED
 OTTAWA ONTARIO
 TRANSFORMER RF,
 TUNED
 AP A.S.
 RPL
 TT10007-44A

TOLERANCES UNLESS OTHERWISE SPECIFIED	SCALE
XXX-005	
XXX-005	

TTRT-4AE 059/68

MAY 13/68

TT10007-44A