

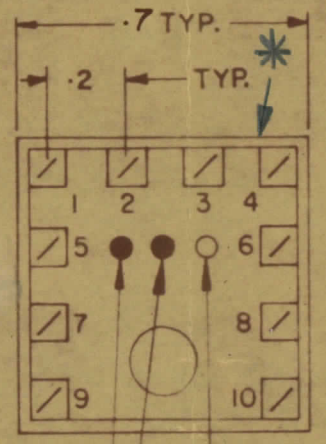
NO.	ITEM	QUANTITY	DATE	BY	CHKD.	APP.
0	REL TO PROD		MAY 14/68	AP		JW

TT10007-43A

NOTE:-
 1- COLOUR CODE INDICATES LAST TWO DIGITS AND LETTER IN TMC PART NO.
 2- * -INDICATES POSITION OF NAMEPLATE.

ASSEMBLY INSTRUCTIONS:-

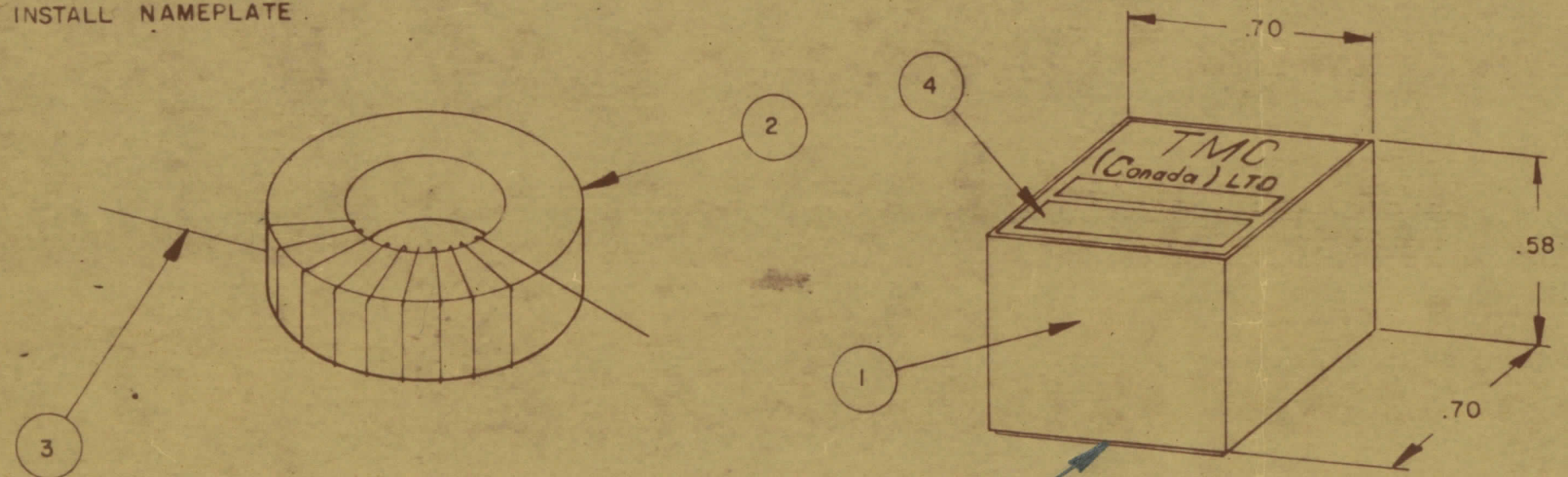
- WIND 20 TURNS OF ITEM 3 AS SHOWN IN SKETCH 1.
- WIND 3 TURNS OF ITEM 3 AS SHOWN IN SKETCH 2.
- WIND 3 TURNS OF ITEM 3 AS SHOWN IN SKETCH 3.
- DIP COIL IN ITEM 5 AND BAKE FOR 1/2 HR. AT 125°F.
- REMOVE 1 TURNS FROM THE PRIMARY IF NECESSARY TO OBTAIN THE FOLLOWING AT TEST FREQ. OF 7.9 MHz.
 - INDUCTANCE IN μH . 1.80 ± 0.1
 - Q MINIMUM 110
- MAXIMUM NUMBER OF TURNS TO BE REMOVED 3
- MOUNT TRANSFORMER ON BASE & CONNECT WIRES TO CORRESPONDING PINS.
- INSTALL ITEM 8 & - BETWEEN PINS 2 & 10.
- INSTALL ITEM 7 & - BETWEEN PINS 4 & 10.
- INSTALL ITEM - BETWEEN PINS & -
- POT TRANSFORMER USING ITEM 6 AS PER SPEC. S 10149.
- COLOUR CODE BOTTOM OF TRANSFORMER
- INSTALL NAMEPLATE.



BOTTOM VIEW

FIRST DIGIT
 SECOND DIGIT
 LETTER (IF REQ'D)
 A - WHITE
 B - BLACK

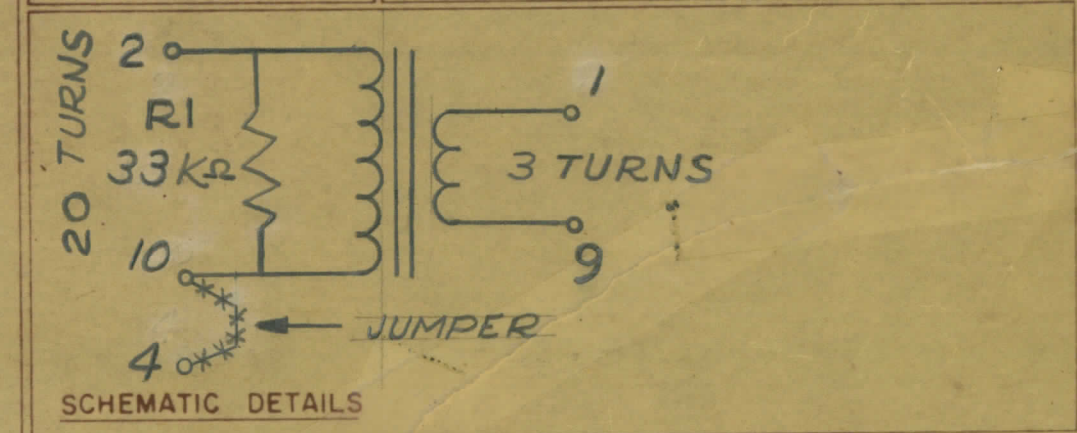
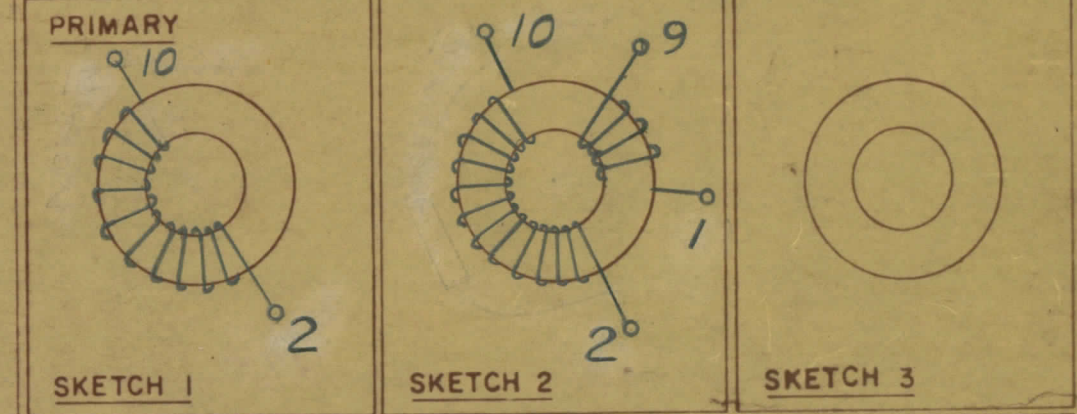
COLOUR CODE MARKING



TYPICAL FOR ALL SKETCHES *

1	1	BPI0002-1	MODU - CON	
1	2	CI-127-1	CORE	
AR	3	WI-122-32	WIRE MAGNET	
1	4	NP 10157	NAMEPLATE	
AR	5	GL 130	Q-DOPE	
AR	6	GL 10005-3110 H	ENCAPSULANT	
AR	7	WL 100-8	BUSS WIRE	
1	8	RC07GF333J	RESISTOR, FIXED	RI
	9			
	10			
	11			
	12			

DIRECTION OF WINDING TO BE CLOSELY FOLLOWED AS SHOWN IN SKETCHES. ALL LEADS TO BE 1 INCH LONG. TIN LEADS BACK 3/4 INCH.



SCHEMATIC DETAILS

TMC (Canada) LIMITED
 OTTAWA ONTARIO
 TRANSFORMER RF,

TUNED
 AP A.S.
 RPL

TOLERANCES UNLESS OTHERWISE SPECIFIED	SCALE
ANGULAR DIM 10/30	X = .05 XX = .01 XXX = .005
DRILL HOLE COMMERCIAL EQUIP	
SIZES AND MANUFACTURERS	
TOLERANCES ARE NOT INCLUDED	

TTRT-4AE 059/68 MAY 13/68

TT10007-43A