

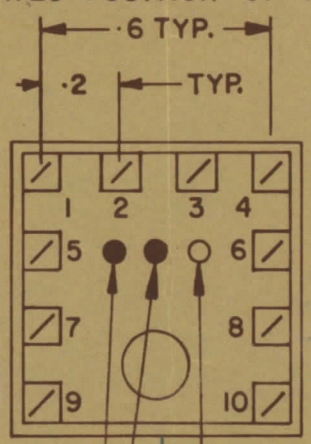
IF IT IS FOUND DESIRABLE TO CHANGE ANY TOLERANCE OR OTHER DETAIL SPECIFIED ON THIS DRAWING NOTIFY THE PURCHASER PROMPTLY		DIMENSIONS IN INCHES UNLESS OTHERWISE SPECIFIED					
MAXIMUM ALLOWABLE TOLERANCES HAVE BEEN DETERMINED AND DEVIATIONS WILL BE CAUSE FOR REJECTION REMOVE ALL BURRS AND SHARP EDGES							
ISSUE	ITEM	CHANGED FROM	DATE	CN NO.	DRAFTS	CHECKER	ENG APP
0		REL TO PROD.	AUG 26/68		AP		

TT10005-41A

**NOTE:-**  
 1- COLOUR CODE INDICATES LAST TWO DIGITS AND LETTER IN TMC PART NO.  
 2- \* -INDICATES POSITION OF NAMEPLATE.

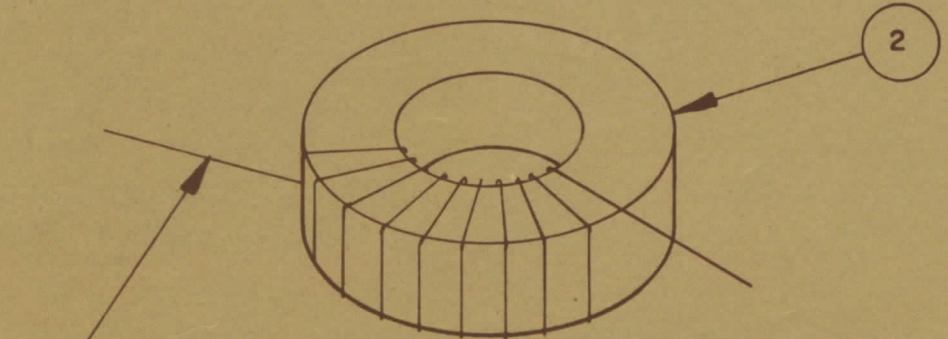
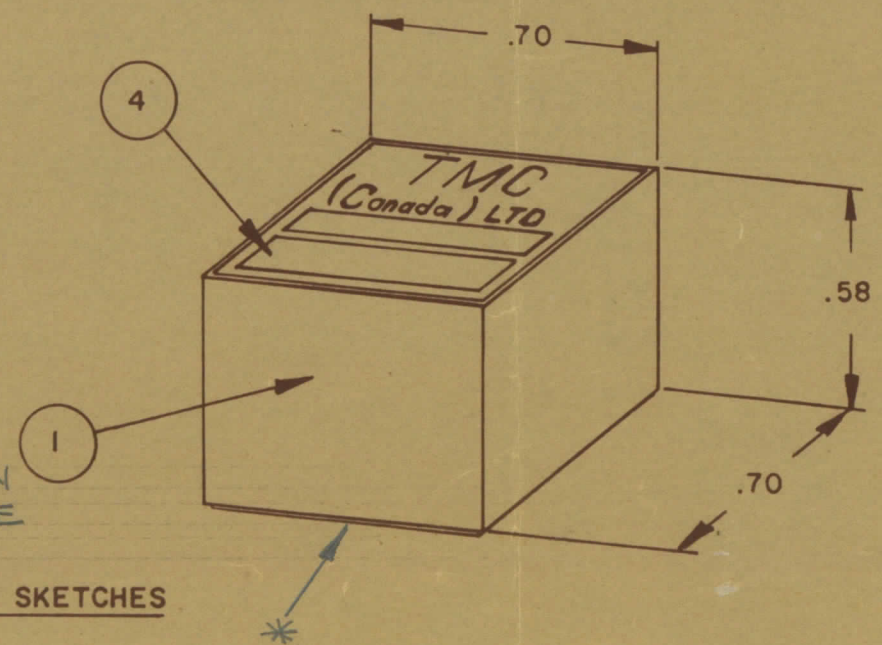
**ASSEMBLY INSTRUCTIONS:-**

- WIND 7 TURNS OF ITEM 3 AS SHOWN IN SKETCH 1. TWIST TAP
- WIND 2 TURNS OF ITEM 3 AS SHOWN IN SKETCH 2.
- WIND \_\_\_\_\_ TURNS OF ITEM \_\_\_\_\_ AS SHOWN IN SKETCH 3.
- DIP COIL IN ITEM 5 AND BAKE FOR 1/2 HR. AT 125°F.
- REMOVE \_\_\_\_\_ TURNS FROM THE PRIMARY IF NECESSARY TO OBTAIN THE FOLLOWING AT TEST FREQ. OF 7.9 MHz.
  - INDUCTANCE OF THE WINDING BETWEEN PINS 9 & 10 -  $1.3 \mu H \pm 0.07$
  - Q MINIMUM
- MAXIMUM NUMBER OF TURNS TO BE REMOVED 2
- MOUNT TRANSFORMER ON BASE & CONNECT WIRES TO CORRESPONDING PINS.
- INSTALL ITEM 7 & 8 BETWEEN PINS 1 & 4.
- INSTALL ITEM 8 & \_\_\_\_\_ BETWEEN PINS 9 & 10.
- INSTALL ITEM \_\_\_\_\_ BETWEEN PINS \_\_\_\_\_ & \_\_\_\_\_.
- POT TRANSFORMER USING ITEM 6 AS PER SPEC. S10149.
- COLOUR CODE BOTTOM OF TRANSFORMER \_\_\_\_\_, \_\_\_\_\_, \_\_\_\_\_.
- INSTALL NAMEPLATE.



FIRST DIGIT  
 SECOND DIGIT  
 LETTER (IF REQ'D)  
 A - WHITE  
 B - BLACK

**COLOUR CODE MARKING**

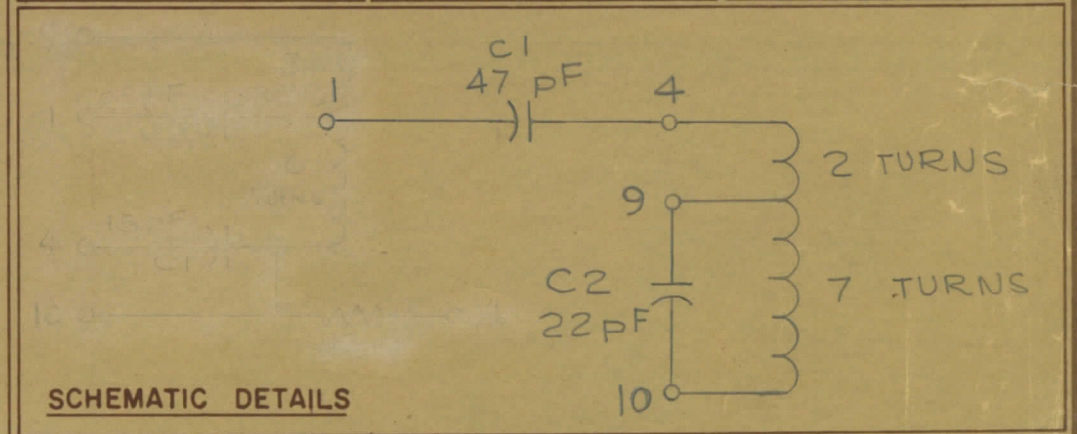
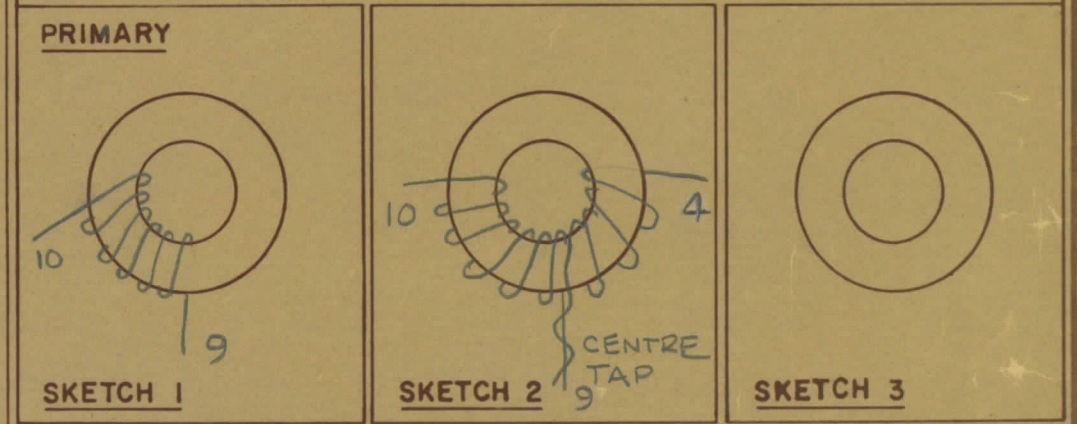


(1) WIND WHOLE WINDING IN SAME DIRECTION  
 (2) SPREAD WINDING EVENLY OVER CORE

TYPICAL FOR ALL SKETCHES

REQ	ITEM	PART NO	DESCRIPTION	
1	1	BPI0002-1	MODU - CON	
1	2	CI-10011-1-Q2	CORE	
AR	3	WI-123-28	WIRE MAGNET	
1	4	NP 10157	NAMEPLATE	
AR	5	GL 130	Q-DOPE	
AR	6	GL 10005-3110 H	ENCAPSULANT	
1	7	CM111E470JIS	CAPACITOR, FIXED.	C1
1	8	CC10014-2	CAPACITOR, FIXED.	C2
	9			
	10			
	11			
	12			

DIRECTION OF WINDING TO BE CLOSELY FOLLOWED AS SHOWN IN SKETCHES. ALL LEADS TO BE 1 INCH LONG. TIN LEADS BACK 3/4 INCH.



STOCK SIZE		TMC (Canada) LIMITED OTTAWA ONTARIO	
MATERIAL		TRANSFORMER F,	
WEIGHT PER PC		TUNED	
TYPE & TEMPER		RPC	A. J. [Signature]
HEAT TREAT SPEC		DRAWN	ELEC DES APP
FINISH & SPEC NO		CHECKED	MECH DES APP
		FINAL APPROVAL	
		TT10005-41A	

TOLERANCES UNLESS OTHERWISE SPECIFIED	SCALE
ALL OTHERS	
DEC DIM	X = .05
FRAC DIM	XX = .01
ANGULAR DIM	XXX = .005
	DRILL, PUNCH, COMMERCIAL STOCK
	SIZES AND MANUFACTURERS
	TOLERANCES ARE NOT INCLUDED

TTRR( ) E	067/68	MAY 16/68
MODEL	PROJECT NO	DATE
	ASS Y NO	
USED ON		