

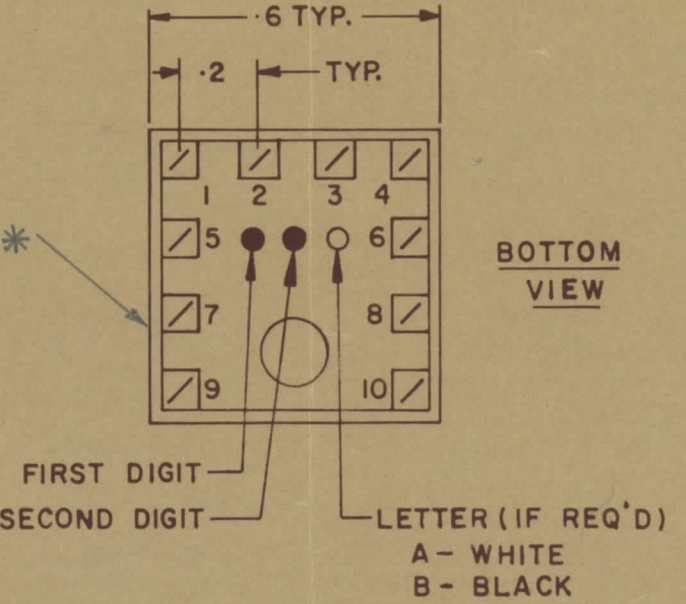
IF IT IS FOUND DESIRABLE TO CHANGE ANY TOLERANCE OR OTHER DETAIL SPECIFIED ON THIS DRAWING NOTIFY THE PURCHASER PROMPTLY					DIMENSIONS IN INCHES UNLESS OTHERWISE SPECIFIED		
MAXIMUM ALLOWABLE TOLERANCES HAVE BEEN DETERMINED AND DEVIATIONS WILL BE CAUSE FOR REJECTION. REMOVE ALL BURRS AND SHARP EDGES							
ISSUE	ITEM	CHANGED FROM	DATE	CN NO	DRAFTS	CHECKER	ENG APP
Ø		REL. TO PROD.	JAN 30/68		RPL		<i>[Signature]</i>
A		REV AS PER CEMN	MAY 15/68	364	RPL		<i>[Signature]</i>
B		REV AS PER CEMN	JUNE 15/69	372	AP		<i>[Signature]</i>
C		REV. AS PER CEMN	7 DEC 72	1208	PVM		<i>[Signature]</i>

TT10002-32B C

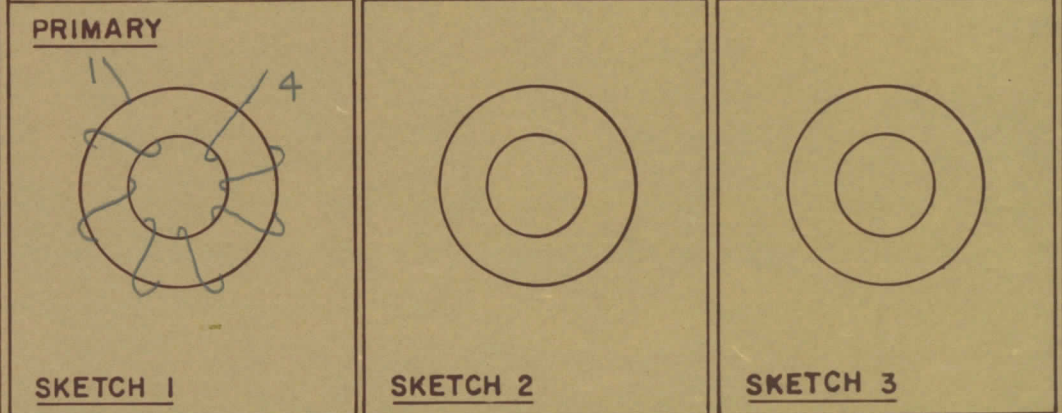
NOTE:-
 1- COLOUR CODE INDICATES LAST TWO DIGITS AND LETTER IN TMC PART NO.
 2- * -INDICATES POSITION OF NAMEPLATE.

ASSEMBLY INSTRUCTIONS:-

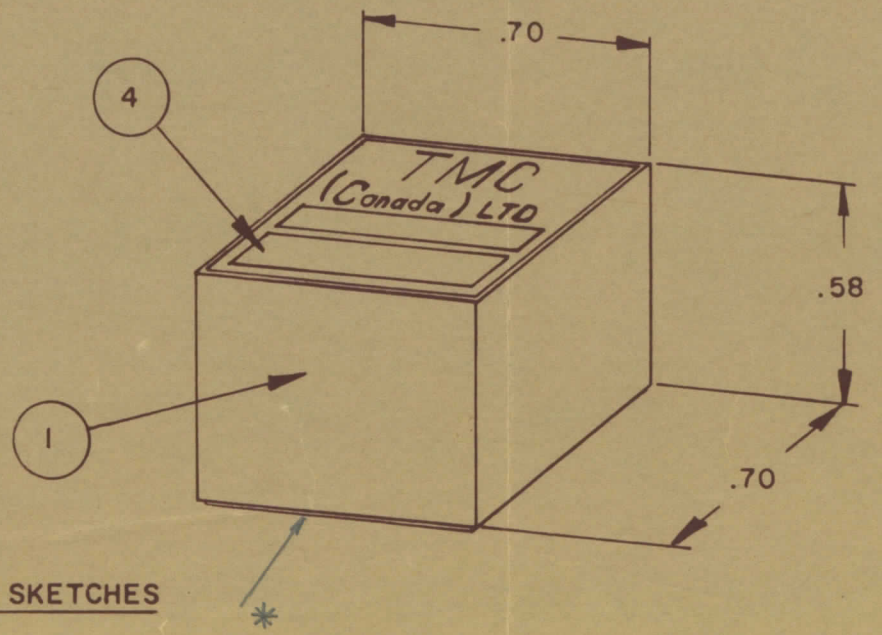
- WIND 10 TURNS OF ITEM 3 AS SHOWN IN SKETCH 1.
- WIND TURNS OF ITEM AS SHOWN IN SKETCH 2.
- WIND TURNS OF ITEM AS SHOWN IN SKETCH 3.
- DIP COIL IN ITEM 5 AND BAKE FOR 1/2 HR. AT 125 °F.
- REMOVE 1 TURNS FROM THE PRIMARY IF NECESSARY TO OBTAIN THE FOLLOWING AT TEST FREQ. OF 7.9 MHZ.
 - INDUCTANCE IN μ H. 1.5 \pm .4
 - Q MINIMUM
- MAXIMUM NUMBER OF TURNS TO BE REMOVED 1
- MOUNT TRANSFORMER ON BASE & CONNECT WIRES TO CORRESPONDING PINS.
- INSTALL ITEMS 8 & 9 BETWEEN PINS 1 & 4.
- INSTALL ITEM 7 & BETWEEN PINS 4 & 10.
- INSTALL ITEM 3 BETWEEN PINS 4 & 9.
- POT TRANSFORMER USING ITEM 6 AS PER SPEC. S10149.
- COLOUR CODE BOTTOM OF TRANSFORMER ORN, RED, BLK.
- INSTALL NAMEPLATE.



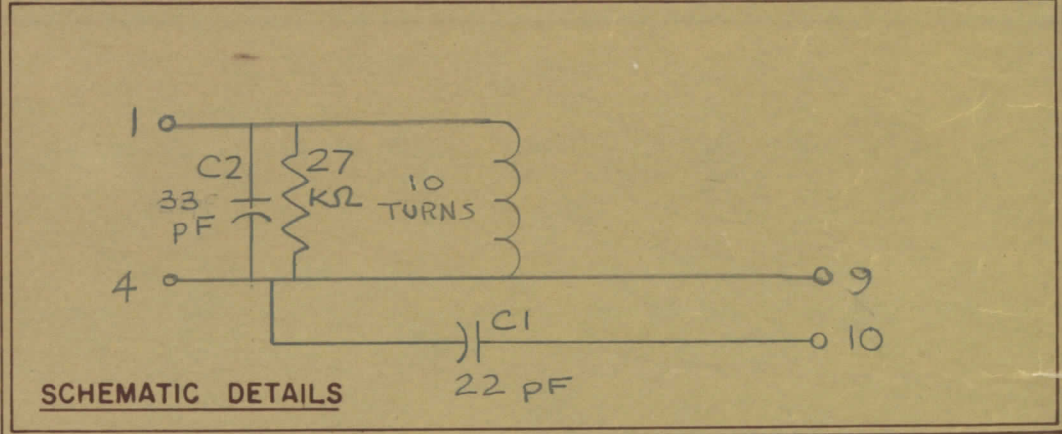
:-DIRECTION OF WINDING TO BE CLOSELY FOLLOWED AS SHOWN IN SKETCHES. ALL LEADS TO BE 1 INCH LONG. TIN LEADS BACK 3/4 INCH.



COLOUR CODE MARKING



TYPICAL FOR ALL SKETCHES



TOLERANCES UNLESS OTHERWISE SPECIFIED		SCALE
ALL OTHERS	DEC DIM 1/64	X = .05
	ANGULAR DIM 0°30'	XX = .01
		XXX = .005
DRILL PUNCH COMMERCIAL STOCK		SIZES AND MANUFACTURERS
TOLERANCES ARE NOT INCLUDED		

MODEL	PROJECT NO	ASSY NO	DATE
TTRR(3B)D	067/68		29 JAN 68
USED ON			

STOCK SIZE		TMC (Canada) LIMITED OTTAWA ONTARIO	
MATERIAL		TRANSFORMER RF,	
WEIGHT PER PC		TUNED	
TYPE & TEMPER		E.T.	<i>[Signature]</i>
HEAT TREAT SPEC		DRAWN	<i>[Signature]</i>
FINISH & SPEC. NO		CHECKED	<i>[Signature]</i>
		FINAL APPROVAL	
		TT10002-32B C	