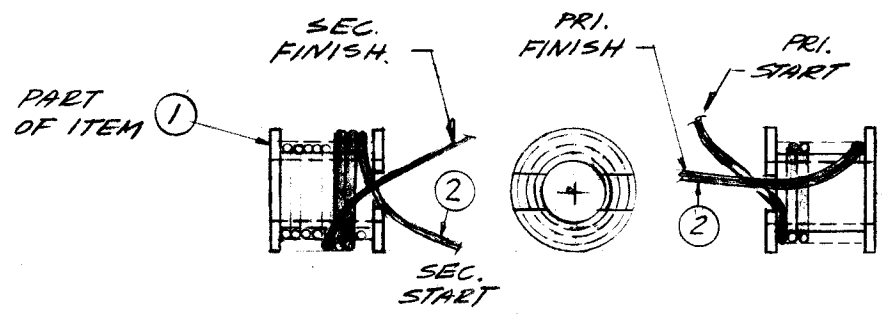
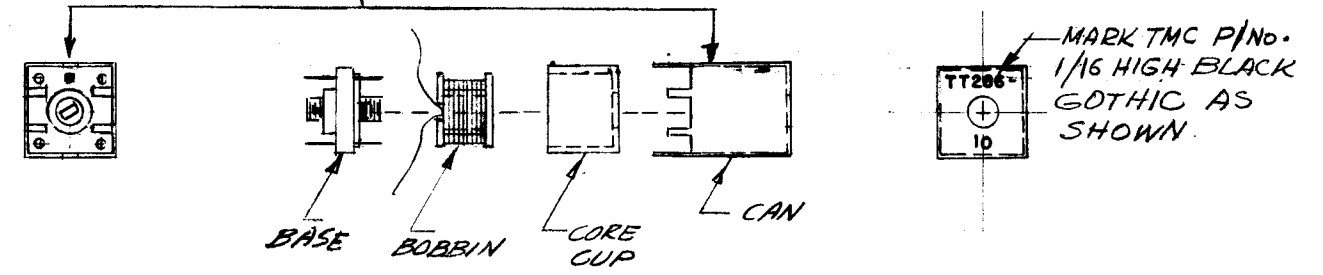


| REVISIONS | | | | | | |
|-----------|---------------------------------|---------|------------|-------|------|------|
| SYM | DESCRIPTION | DATE | E.M.N. NO. | DRAFT | CHKD | APPD |
| X | EXP. RELEASE | 4-5-67 | | | | |
| X1 | P/Nos 15 & 16 ADDED | 5-1-67 | | G.D.L | | |
| X2 | UPDATED | 5-25-67 | | G.D.L | | |
| Ø | ORIGINAL RELEASE FOR PRODUCTION | 8-28-67 | Ø | RG | | |

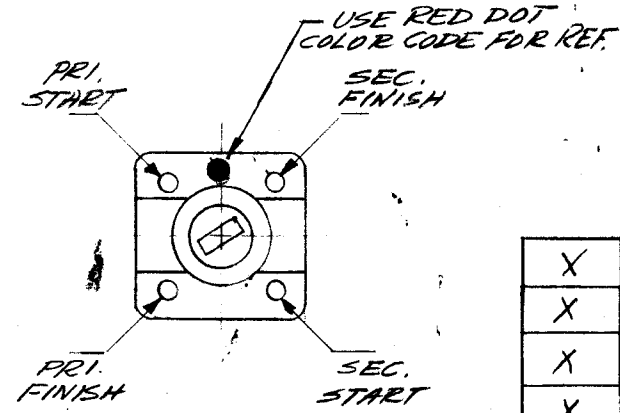
TT 286 -

| PART NO. | PRI. TURNS | SEC. TURNS | FLUSH CORE NOM. L OF PRI. IN INCH. | + TOL IN ALH | WIRE DISTR. C OF PRI. | Q OF PRI. | MIN Q. | AT FREE MC | QTY PER UNIT | OPERATING FREE. MC |
|----------|------------|------------|------------------------------------|--------------|-----------------------|-----------|--------|------------|--------------|-------------------------|
| 1 | 33 | 11 | 10.5 | 0.5 | 6.3 | 79 | 70 | 2.4 | 4 | 0.8, 0.9, 1.0 |
| 2 | 33 | 6 3/4 | 10.5 | 0.5 | 6.1 | 90 | 70 | 2.4 | 3 | 0.8, 0.9, 1.0 |
| 3 | 27 1/2 | 9 | 7.0 | 0.3 | 3.2 | 80 | 70 | 3.0 | 3 | 1.1, 1.2, 1.3 |
| 4 | 27 1/2 | 5 1/2 | 7.0 | 0.3 | 3.1 | 78 | 70 | 3.0 | 3 | 1.1, 1.2, 1.3 |
| 5 | 23 1/2 | 8 | 5.1 | 0.2 | 1.9 | 75 | 65 | 3.5 | 3 | 1.4, 1.5, 1.6 |
| 6 | 23 1/2 | 4 1/2 | 5.1 | 0.2 | 1.9 | 78 | 70 | 3.5 | 3 | 1.4, 1.5, 1.6 |
| 7 | 21 1/2 | 7 | 3.9 | 0.2 | 1.4 | 77 | 70 | 4.0 | 5 | 1.7, 1.8, 1.9, 3.0, 3.5 |
| 8 | 21 1/2 | 4 1/4 | 3.9 | 0.2 | 1.4 | 77 | 70 | 4.0 | 3 | 1.7, 1.8, 1.9 |
| 9 | 11 | 3 1/2 | 1.55 | 0.08 | 0.6 | 79 | 70 | 7.0 | 1 | 6.0 |
| 10 | 11 | 2 1/2 | 1.55 | 0.08 | 0.6 | 79 | 70 | 7.0 | 1 | 6.0 |
| 11 | 9 1/2 | 3 | 1.32 | 0.06 | 0.6 | 75 | 65 | 7.5 | 1 | 7.0 |
| 12 | 9 1/2 | 2 | 1.32 | 0.06 | 0.6 | 75 | 65 | 7.5 | 1 | 7.0 |
| 13 | 8 | 2 1/2 | 0.923 | 0.05 | 0.6 | 72 | 65 | 9.0 | 1 | 8.0 |
| 14 | 8 | 1 1/2 | 0.923 | 0.05 | 0.6 | 72 | 65 | 9.0 | 1 | 8.0 |
| 15 | 6 1/2 | 2 | 0.633 | 0.02 | 1.2 | 80 | 70 | 13.0 | 3 | 12, 13, 14 |
| 16 | 6 1/2 | 1 1/2 | 0.633 | 0.02 | 1.0 | 80 | 70 | 13.0 | 3 | 12, 13, 14 |
| 17 | | | | | | | | | | |

STAMP BLACK DOT ON SIDE OF CAN CORRESPONDING TO BASE COLOR CODE



WINDING DETAIL



CONNECTION DIAGRAM
BOTTOM VIEW OF BASE

- NOTES
1. WIND PRIMARY TURNS, APPLY ITEM 5 TO HOLD LEADS.
 2. WIND SECONDARY ON TOP OF PRIMARY, APPLY ITEM 5 TO HOLD LEADS.
 3. BAKE IN OVEN FOR 1/2 HR. AT 212°F
 4. APPLY COAT OF ITEM 4 TO WINDING TO HOLD IN PLACE.
 5. STRIP & TIN 4 LEADS TO WITHIN 1/4" FROM COIL
 6. WIRE AS PER CONNECTION DIAGRAM.
 7. ASSEMBLE AS SHOWN.
 8. TEST BEFORE BENDING OVER HOLDING TABS

NOTES

| | | |
|------------|---------------|-----------------|
| — | VOX-7 | — |
| — | LFE-1 | — |
| — | MMX-() | — |
| Q'TY./UNIT | MODEL USED ON | ASS'Y. NO. |
| SCALE | CODE | S401-451, S401- |
| | A | S401- |

THE CONTENTS OF THIS DRAWING ARE THE EXCLUSIVE PROPERTY OF THE TECHNICAL MATERIEL CORP. ITS UNAUTHORIZED USE OR REPRODUCTION IN WHOLE OR IN PART IS STRICTLY FORBIDDEN.

| REQ'D. | ITEM | PART NUMBER | DESCRIPTION | SYMBOL |
|--------|------|----------------|--------------------|--------|
| X | 5 | GL 103 | ADHESIVE - N - CEL | |
| X | 4 | GL 102 | ADHESIVE - Q - MAX | |
| X | 3 | BS 100 | SOLDER, TIN ALLOY | |
| X | 2 | WI 104.541SNQS | WIRE, ELEC. LITZ | |
| 1 | 1 | CI 136-5 | CORE ADJ. TUNNING | RED |

O.POSE. LIST OF MATERIAL

| | | | | | |
|-------------------------------------------------------------------------------------------------------------|--|------------------------------------------------------|----------|----------------|---------|
| MATERIAL | | THE TECHNICAL MATERIEL CORP. MAMARONECK, NEW YORK | | | |
| FINISH | | TITLE TRANSFORMER, RF | | | |
| UNLESS OTHERWISE SPECIFIED DIMENSIONS ARE IN INCHES AND INCLUDE CHEMICALLY APPLIED OR PLATED FINISHES | | DRAWN | DATE | FINAL APPROVAL | DATE |
| DECIMALS .X ± .05 .XX ± .01 .XXX ± .005 | | J. ANGEL | 10/17/66 | [Signature] | 8/23/67 |
| FRACTIONS ± 1/64 ANGLES ± 0° 30' | | CHECKED | DATE | TT 286 - | |
| TOLERANCES | | ELECT. DES. | DATE | SHEET | |
| | | Mech. Des. | DATE | REV. LTR. | |

M/L Allen 8/28/67