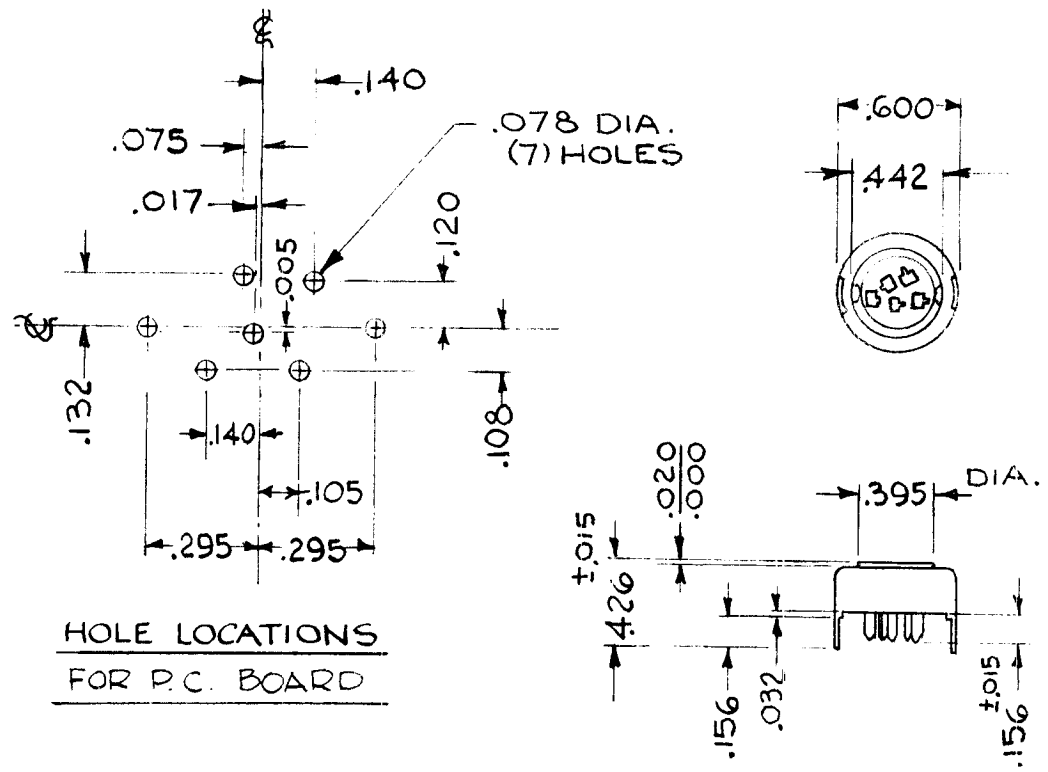


STANDARD DRAWING

TMC PART NO.	MFR PART NO.	CONTACT	INSULATOR MATERIAL	CONTACT MATERIAL	REQ. PER UNIT	USED ON			TS 183	∅
						MODEL	ASSY. NO.	DATE		
TS 183-1	133-65-10-009	5	MICA	BRASS		HFS-1				
						HFSA-1				
						HFSR-1				



HOLE LOCATIONS FOR P.C. BOARD

SPECIFICATIONS:
 5 CONTACTS & (2) GROUNDING TERMINALS.
 CONTACT TERMINALS ARE POLARIZED.
INSULATOR BODY:
 MICA-FILLED LOW LOSS PHENOLIC (MFE).
CONTACTS:
 BRASS, CADMIUM-PLATED.
SADDLE:
 COLD ROLLED STEEL, CADMIUM-PLATED.

REQ.	ITEM	PART NO.	DESCRIPTION			SYMBOL
			THE TECHNICAL MATERIEL CORP. MAMARONECK, NEW YORK			
			STOCK SIZE			
			SOCKET, NUVISTOR			
			MATERIAL			
			TYPE & TEMPER	HEAT TREAT. SPEC.	DRAWN	CHECKED
			FINISH & SPEC. NO.		ELEC. DES. APP.	MECH. DES. APP.
					TS 183	∅

UNLESS OTHERWISE SPECIFIED DIMENSIONS ARE IN INCHES AND INCLUDE CHEMICALLY APPLIED OR PLATED FINISHES	SCALE	DATE	CH. NO.	DRAFTS	CHECKER	ENG. APP.
		8/30/66	A	JB	[Signature]	

DECIMALS X ± .05 .XX ± .01 .XXX ± .005	FRACTIONS ± 1/64 ANGLES ± 0° 30'	TOLERANCES	CODE C	S401-176
--------------------------------------------------------	--------------------------------------------------	-------------------	------------------	-----------------