

IF IT IS FOUND DESIRABLE TO CHANGE ANY TOLERANCE OR OTHER DETAIL SPECIFIED ON THIS DRAWING NOTIFY THE PURCHASER PROMPTLY.

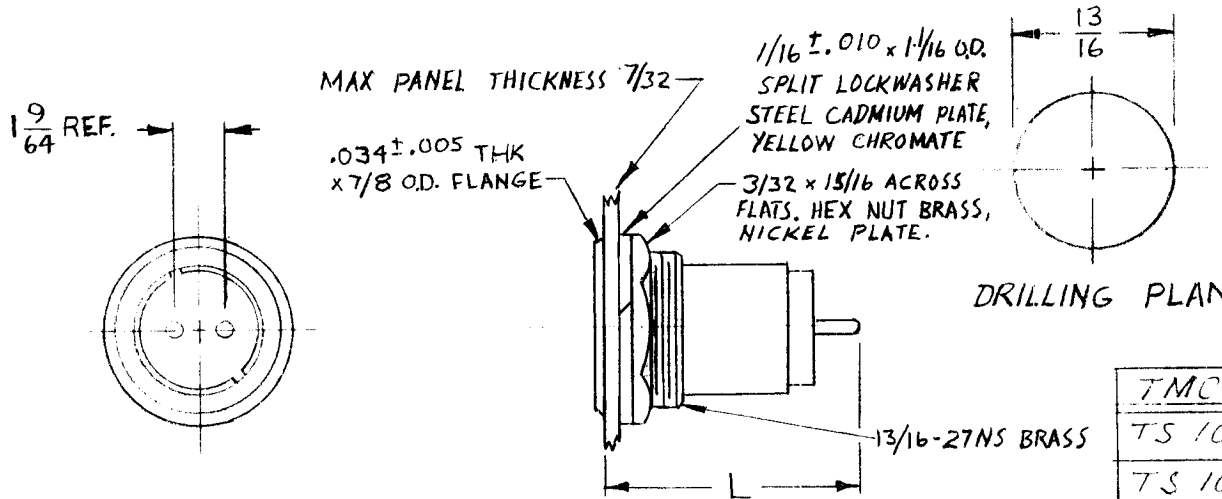
STANDARD DRAWING

TS 108 A

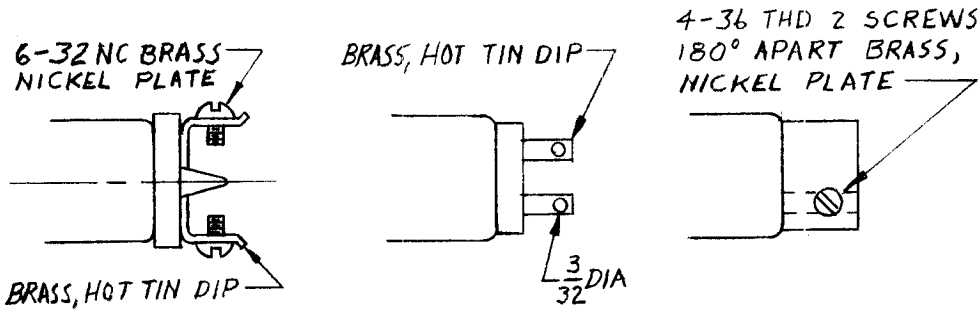
MAXIMUM ALLOWABLE TOLERANCES HAVE BEEN DETERMINED AND DEVIATIONS WILL BE CAUSE FOR REJECTION. REMOVE ALL BURRS AND SHARP EDGES

USED ON

MODEL	PROJECT NO.	ASS'Y. NO.	DATE
VTG	103	A	7-29-52



TMC NO.	CAT. NO.	L. MAX	TYPE
TS 108-1	65-52	1-15/32	BINDING SCREW TERM.
TS 108-2	65-2	1-11/32	SOLDERING TERM.
TS 108-3	65-20	1-9/32	SET SCREW TERM.



TS108-1

TS108-2

TS108-3

REQ.	ITEM	PART NO.	DESCRIPTION	SYMBOL
		11	THE TECHNICAL MATERIEL CORP. MAMARONECK, NEW YORK	
		STOCK SIZE		
			SOCKET - BAYONET	
		MATERIAL	WEIGHT PER PC.	
		TYPE & TEMPER		
		HEAT TREAT. SPEC.		
		FINISH & SPEC. NO.		

A	DETAILS TS108-1, -2, & -3 NOTES ADD; PICT. REVISED; TMC CHART UPDATED; L. MAX COL. ADD.	3/4/65	13645	22	JOB		
+	REDRAWN - NO REVISION	10/25/54	1	JAN	SED		
ISSUE	ITEM	CHANGED FROM	DATE	CN. NO.	DRAFTS	CHECKER	ENG. APP.

TOLERANCES

SCALE 5/16-1/8

ALL OTHERS
DEC. DIM. ±
FRAC. DIM. ± 1/64
ANGULAR DIM. ±

DRILL, PUNCH, COMMERCIAL STOCK
SIZES AND MANUFACTURERS
TOLERANCES ARE NOT INCLUDED.

DRAWN: [Signature]
ELEC. DES. APP.: [Signature]
MECH. DES. APP.: [Signature]

CHECKED: [Signature] FINAL APPROVAL: [Signature]

TS 108 A