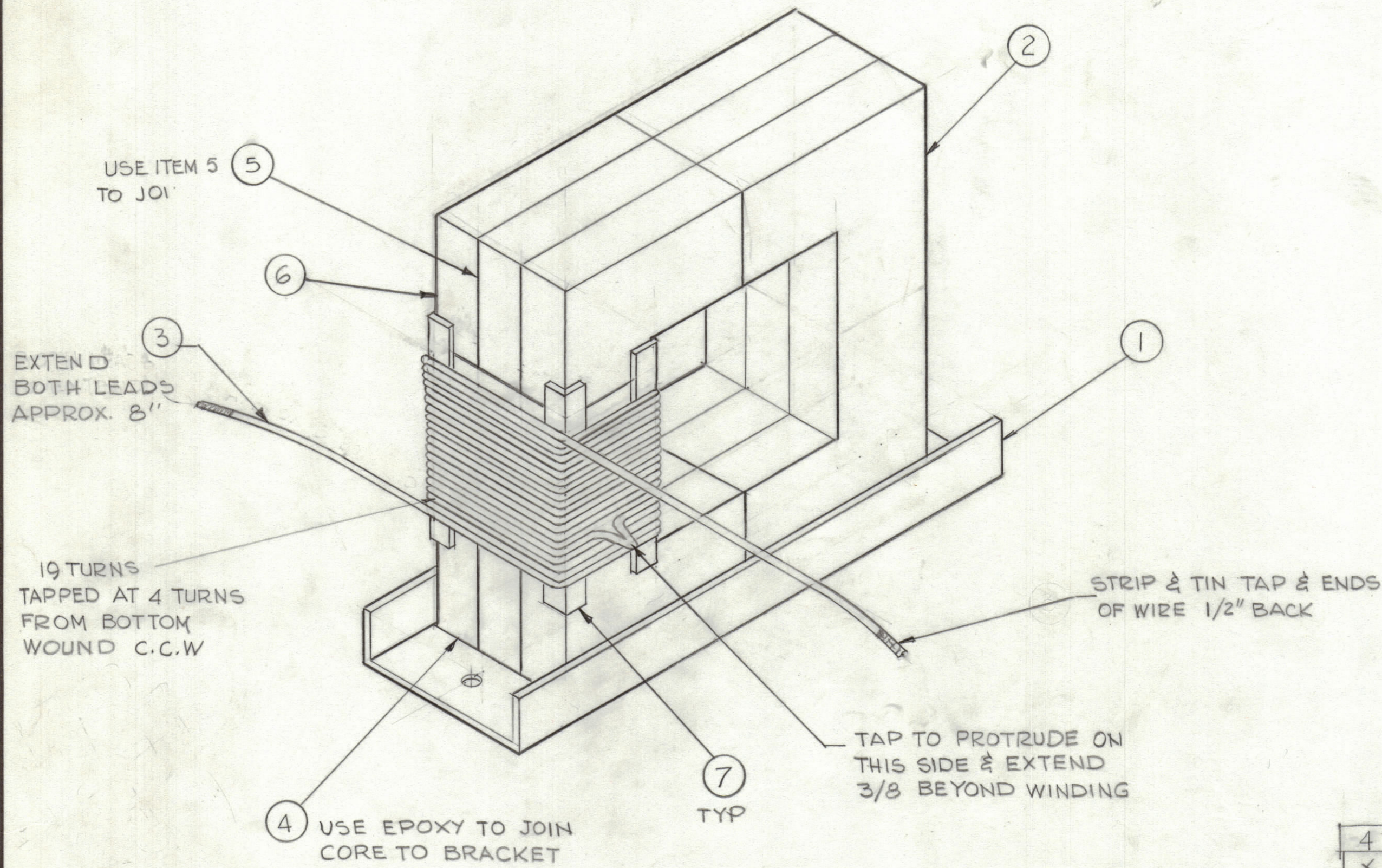


REVISIONS						
ZONE	LTR	DESCRIPTION	DATE	E.M.N.NO	DRAFT	CHKD APPD
	X	EXP. RELEASE				
	Ø	ORIGINAL RELEASE FOR PRODUCTION	3/13/75		CL	
	A	ITEM 7: ADD 4EA., PX1153 SPACER	2/15/77	21502	SDI	W.J.A.*



QTY. REQ.	ITEM	PART NO.	DESCRIPTION	SYMBOL
4	7	PX1153	SPACER	
X	6	TA 108-1	TAPE	
X	5	EASTMAN 910	ADHESIVE	
X	4	GL 125	ADHESIVE, EPOXY (BLACK)	
X	3	WI123-12	WIRE ELEC	
6	2	CI 101-5Q2	CORE U	
1	1	MS 5140	BRACKET, MTG XFMR	

LIST OF MATERIAL			
FINAL APPROVAL		DATE	
<i>[Signature]</i>		3/13/75	
MECH. DES.		DATE	
F. IANNUZZI		2-7-75	
ELECT. DES.		DATE	
CHECKED		DATE	
F. IANNUZZI		2-7-75	
DRAWN		DATE	
G. DeLuca		12-13-74	
THE TECHNICAL MATERIEL CORP. MAMARONECK, NEW YORK			
TRANSFORMER, MACHINING OUTPUT			
SIZE	CODE IDENT. NO.	DWG NO.	ISSUE
C	82679	TR 202	A
SCALE	NONE	SHEET	OF

QTY / UNIT	MODEL USED ON	ASS'Y NO.
	TMA-1K	BMA 530
APPLICATION		
	CODE	
<small>NOTICE TO PERSONS RECEIVING THIS DRAWING</small> <small>THE TECHNICAL MATERIEL CORPORATION claims proprietary right in the material disclosed hereon. This drawing is issued in confidence for engineering information only and may not be reproduced or used to manufacture anything shown hereon without permission from THE TECHNICAL MATERIEL CORPORATION to the user. This drawing is loaned for mutual assistance and is subject to recall at any time.</small>		
MATERIAL		
FINISH		

UNLESS OTHERWISE SPECIFIED DIMENSIONS ARE IN INCHES AND INCLUDE CHEMICALLY APPLIED OR PLATED FINISHES

TOLERANCES ON

DECIMALS	FRACTIONS
.X ± .05	± 1/64
.XX ± .01	ANGLES
.XXX ± .005	± 0° -30'

TR 202