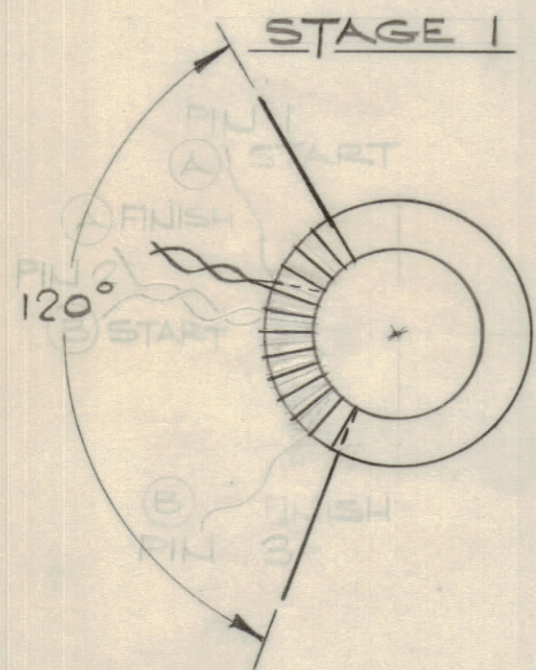


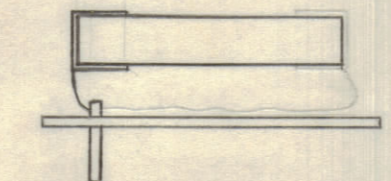
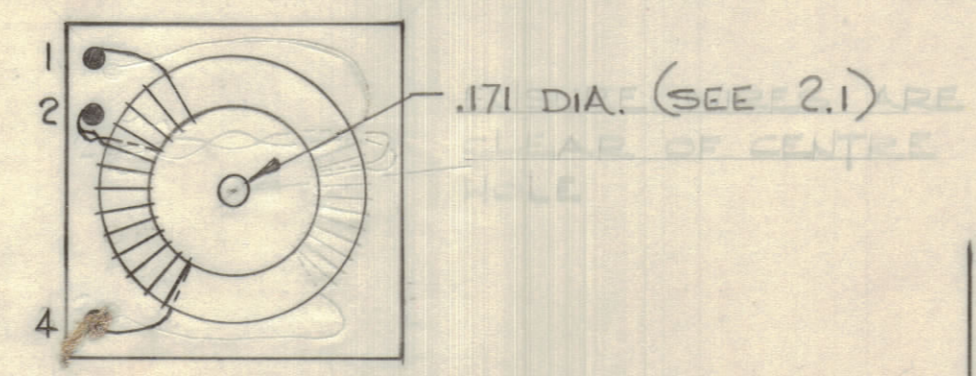
IF IT IS FOUND DESIRABLE TO CHANGE ANY TOLERANCE OR OTHER DETAIL SPECIFIED ON THIS DRAWING NOTIFY THE PURCHASER PROMPTLY.						DIMENSIONS IN INCHES UNLESS OTHERWISE SPECIFIED	
MAXIMUM ALLOWABLE TOLERANCES HAVE BEEN DETERMINED AND DEVIATIONS WILL BE CAUSE FOR REJECTION. REMOVE ALL BURRS AND SHARP EDGES.							
ISSUE	ITEM	CHANGED FROM	DATE	CN. NO.	DRAFTS	CHECKER	ENG. APP.
Ø		REL TO PROD	22 OCT 70				
A		REVISED PER CEMN	JAN 6-74	868	G.C.T.		

NOT TO BE RELEASED W/O AUTHORIZATION  
 AUTH. BY: \_\_\_\_\_  
 DATE: \_\_\_\_\_

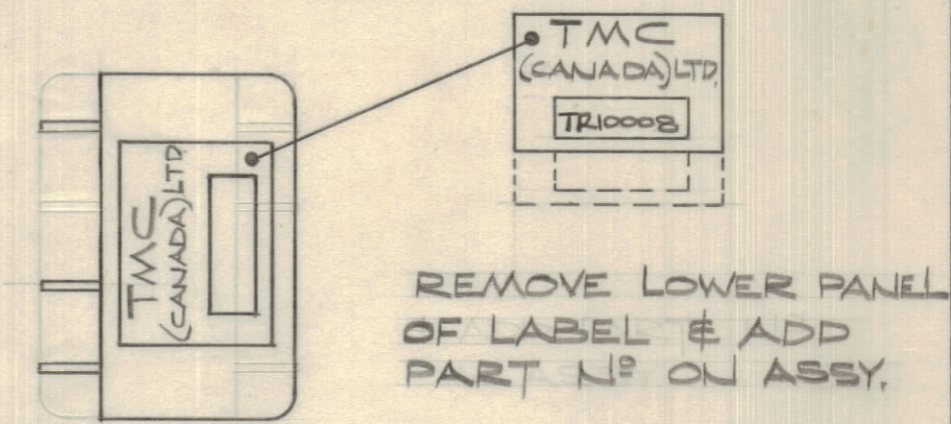
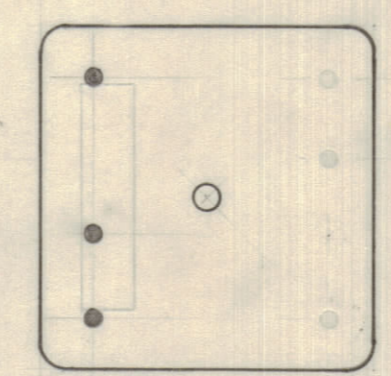
REQ.	ITEM	PART NO.	DESCRIPTION	SYMBOL
1	1	CI10010-1	CORE	
AR	2	WI123-28	WIRE ELECT. MAGNET	
AR	3	GL104-2	INSULATING VARNISH	
1	4	BP10005	HEADER	
1	5	BP10006-1	SHELL	
AR	6	GL10005	POTTING COMPOUND	
1	7	ND10157	NAMEPLATE.	
	8			
	9			
	10			



STAGE 2



STAGE 3



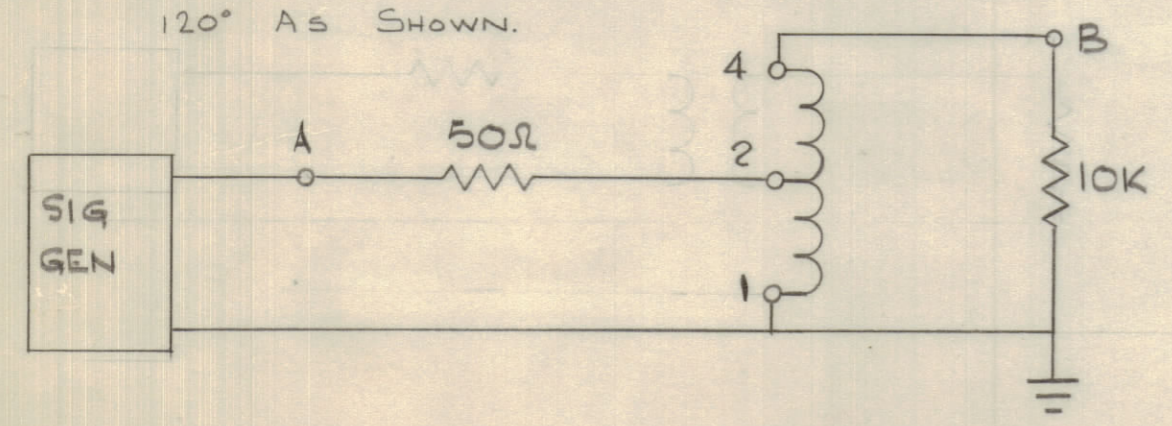
- 1.1 DIP CORE IN ITEM 3 AND BAKE BAKE FOR ONE HOUR AT 125°C AND COOL AT -20°C FOR ONE HOUR.
- 1.2 WIND WIRE A (ITEM 2) ONTO CORE FOR 3 COMPLETE TURNS
- 1.3 CONNECT THE START END OF WIRE B (ITEM 2) TO THE FINISH END OF WIRE A AS SHOWN AT 120° SPACING.
- 1.4 DIP COIL IN ITEM THREE AND BAKE FOR ONE HOUR AT 125°C AND COOL AT -20°C FOR ONE HOUR
- 1.5 EQUI-SPACE WINDINGS OVER
- 1.6 WIND WIRE B ONTO CORE FOR 9 COMPLETE TURNS
- 1.7 EQUI-SPACE WINDINGS OVER 120° AS SHOWN.

- 2.1 DRILL HOLE .171 DIA. THROUGH CENTRE OF HEADER.
- 2.2 MOUNT TORROID ON HEADER (ITEM 4) AND CONNECT WIRES AS SHOWN.
- 2.3 TEST TRANSFORMER FOR RATIO AS SHOWN BELOW.
- 2.4 ENSURE WIRES ARE CLEAR OF CENTRE HOLE BEFORE POTTING.

- 3.1 ASSEMBLE SHELL (ITEM 5) TO HEADER AND POT USING ITEM 6
- 3.2 USING HOLE IN HEADER AS PILOT (DRILL THROUGH COMPLETE ASSY. .171 DIA.
- 3.3 RE-TEST VOLTAGE RATIO AS SHOWN BELOW.

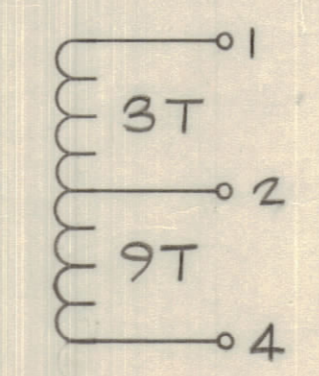
TR10008 A

ELECTRICAL SPECIFICATION



SIG GEN OUTPUT 2 MHZ, VOLTAGE RATIO A TO B 1:3 ± 25%  
 SIG GEN OUTPUT 28 MHZ, VOLTAGE RATIO A TO B 1:2.1 ± 25%

SCHMATIC



TOLERANCES		SCALE: N.T.S.
DEC DIM. ± .X+.05		DRILL, PUNCH, COMMERCIAL STOCK SIZES AND MANUFACTURERS TOLERANCES ARE NOT INCLUDED.
FRAC DIM. ± 1/64 .XX+.01		
ANGULAR DIM. ± 0° 30'	.XXX+.005	

MTR-100A	087/70		
MODEL	PROJECT NO.	ASSY. NO.	DATE
USED ON			

TMC (Canada) LIMITED OTTAWA ONTARIO			
TRANSFORMER RF			
STOCK SIZE	WEIGHT PER PC.		
TYPE & TEMPER		W.S.	
HEAT TREAT. SPEC.		DRAWN	ELEC. DES. APP.
		CHECKED	FINAL APPROVAL
		TR10008 A	