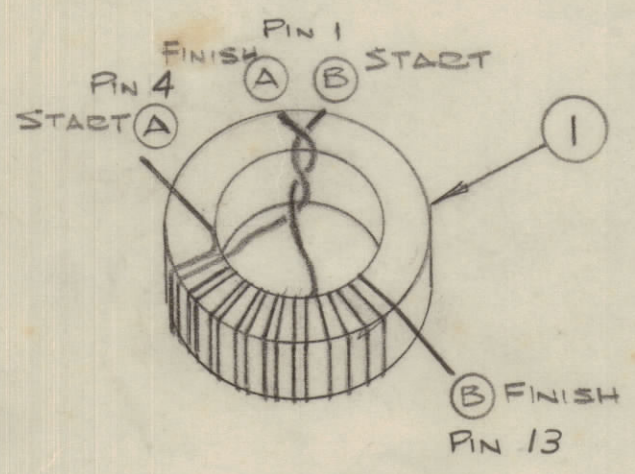


IF IT IS FOUND DESIRABLE TO CHANGE ANY TOLERANCE OR OTHER DETAIL SPECIFIED ON THIS DRAWING NOTIFY THE PURCHASER PROMPTLY.		DIMENSIONS IN INCHES UNLESS OTHERWISE SPECIFIED					
MAXIMUM ALLOWABLE TOLERANCES HAVE BEEN DETERMINED AND DEVIATIONS WILL BE CAUSE FOR REJECTION. REMOVE ALL BURRS AND SHARP EDGES.							
ISSUE	ITEM	CHANGED FROM	DATE	CN. NO.	DRAFTS	CHECKER	ENG. APP.
Ø		RELEASED TO PROD.	23/68		JB		KJH
A		REV AS PER CEMN	JAN 6/69	429	AP		
B		REV AS PER CEMN	FEB 26/69	450	AP		
C		REV. AS PER. CEMN	JULY 17/70	816	H.P.		
D		REV. PER CEMN	JAN 6/70	868	A.C.T.		

NOT TO BE RELEASED W/O AUTHORIZATION
AUTH. BY _____
DATE: _____

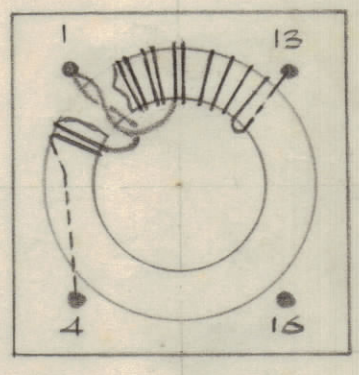
REQ.	ITEM	PART NO.	DESCRIPTION	SYMBOL
1	1	CI 10010-1	CORE	
AR	2	WI 123-28	WIRE ELECT. MAGNET	
AR	3	GL 104-2	INSULATING VARNISH	
	4	BP 10005	HEADER	
	5	BP 10006-1	SHELL	
AR	6	GL 10005	POTTING COMPOUND	
	7	ND 10157	NAMEPLATE	
	8			

STAGE 1.



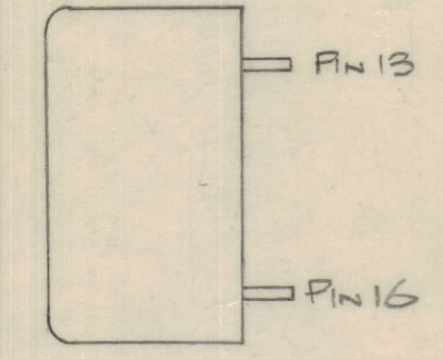
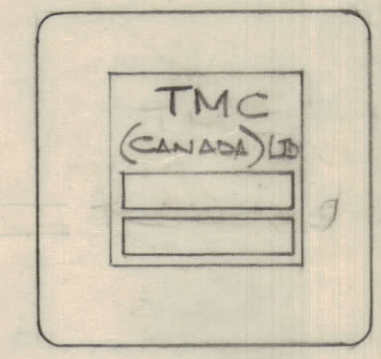
- 1.0. DIP CORE IN ITEM 3 AND BAKE FOR ONE HOUR AT 125°C AND COOL AT -20°C FOR ONE HOUR.
- 1.1 WIND 2 WIRES A & B (USING ITEM 2) TOGETHER ON THE CORE FOR 6 TURNS
- 1.2 CONNECT THE START END OF WIRE B TO THE FINISH END OF WIRE A AS SHOWN
- 1.3. CONTINUE TO WIND WIRE B FOR ANOTHER 4 TURNS
- 1.4 DIP COIL IN ITEM THREE AND BAKE FOR ONE HOUR AT 125°C AND COOL AT -20°C FOR ONE HOUR
- 1.5 TEST.

STAGE 2.



- 2.1 MOUNT TOROID ON HEADER (ITEM 4) AND CONNECT WIRES AS SHOWN
- 2.2 TEST TRANSFORMER AS PER TMC SPEC S10187

STAGE 3



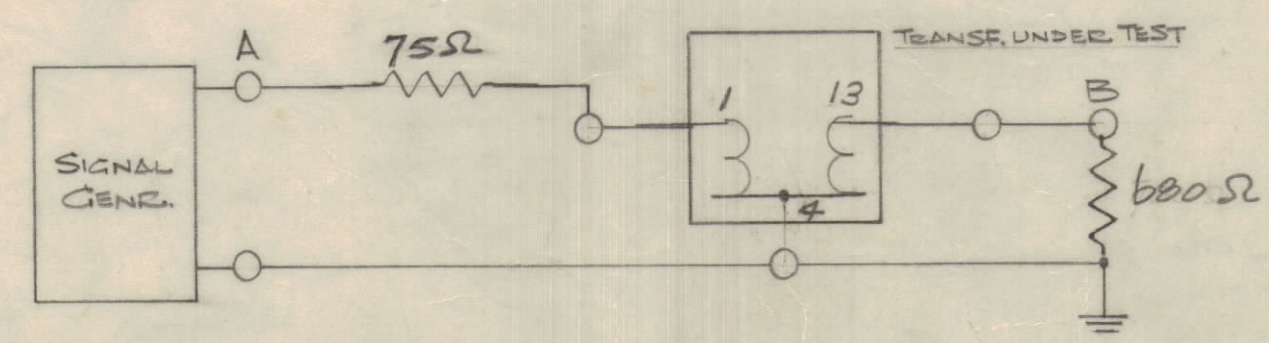
- 3.1 ASSEMBLE SHELL (ITEM 5) TO HEADER AND POT USING ITEM 6
- 3.2 AFFIX TMC NAMEPLATE (ITEM 7) AS SHOWN.

TR 10005 D

ELECTRICAL SPECIFICATION ~

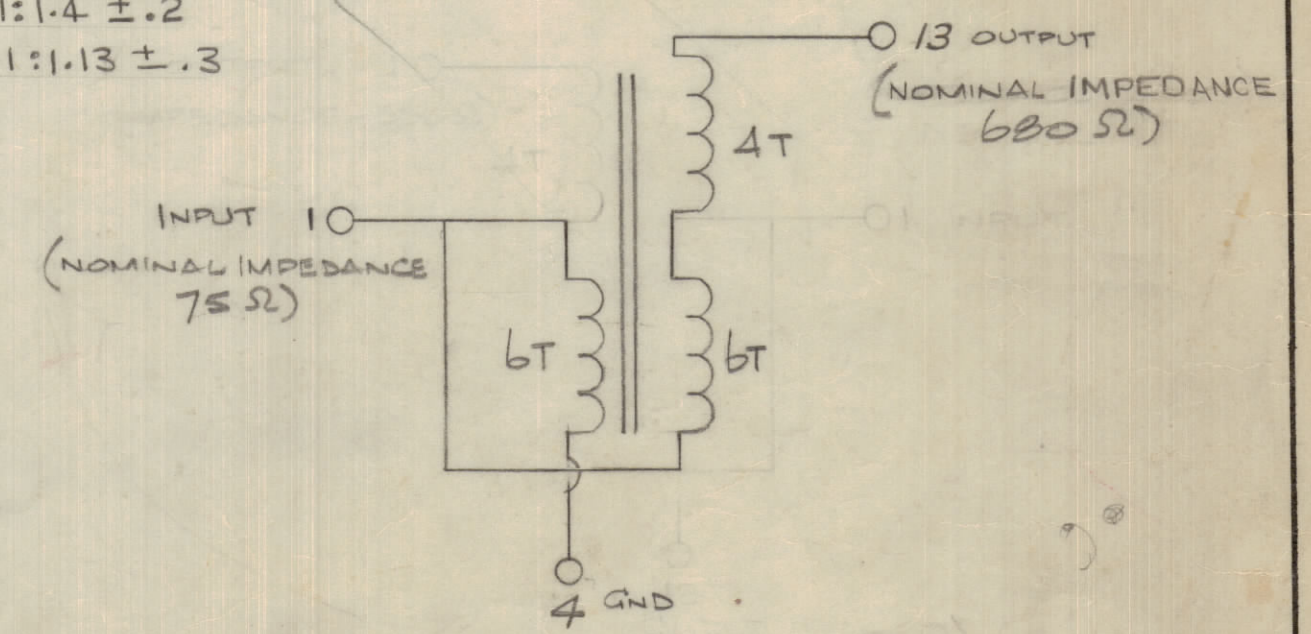
AT 2 MHZ, THE VOLTAGE RATIO "A" TO "B" SHOULD BE 1:1.4 ± .2
AT 28 MHZ, THE VOLTAGE RATIO "A" TO "B" SHOULD BE 1:1.13 ± .3

2 Mc	10	1.4 ± 0.2
28 Mc	10	1.13 ± 0.3



SET FREQUENCY SPECIFIED ABOVE AND CONNECT OUTPUT OF SIGNAL GENERATOR TO POINT "A", THEN MEASURE THE VOLTAGE AT POINT "B". THE VOLTAGE RATIO "A" TO "B" SHALL BE WITHIN THE LIMITS SHOWN ABOVE.

SCHEMATIC ~



TOLERANCES		SCALE:
ALL OTHERS	DEC. DIM. ± .05 FRAC. DIM. ± 1/64 ANGULAR DIM. ± 0° 30'	DRILL, PUNCH, COMMERCIAL STOCK SIZES AND MANUFACTURERS TOLERANCES ARE NOT INCLUDED.

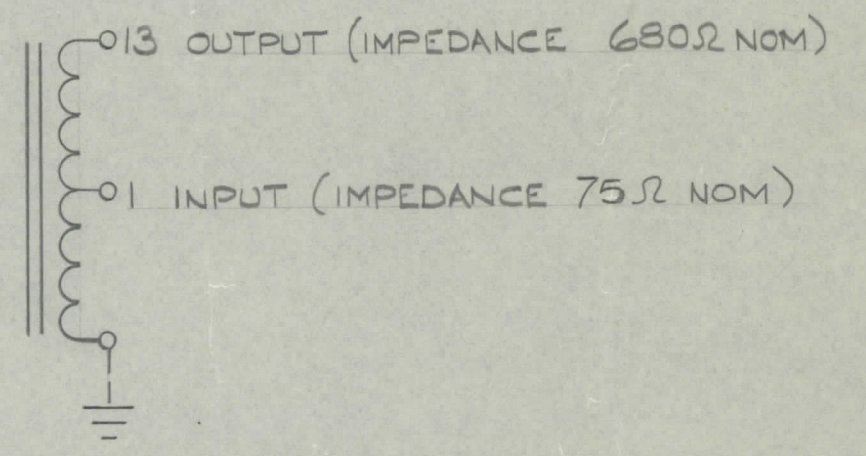
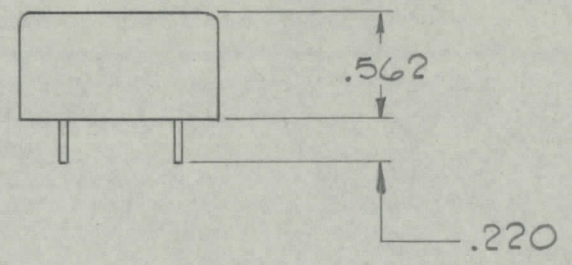
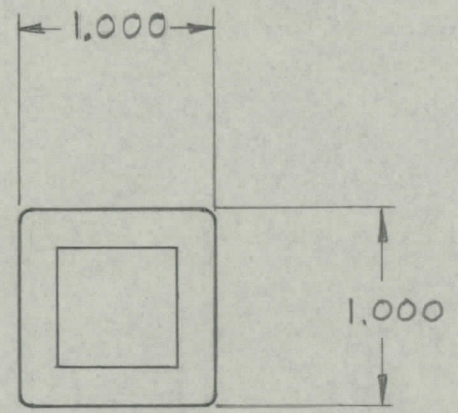
AMC 32			
AMC B	07A/69		29 NOV 1968
MODEL	PROJECT NO.	ASS'Y. NO.	DATE

STOCK SIZE		TMC (Canada) LIMITED OTTAWA ONTARIO	
MATERIAL		TRANSFORMER, R.F.	
TYPE & TEMPER		BARTLETT	Ka J L
HEAT TREAT. SPEC.		DRAWN	ELEC. DES. APP.
		CHECKED	FINAL APPROVAL
		TR 10005	

IF IT IS FOUND DESIRABLE TO CHANGE ANY TOLERANCE OR OTHER DETAIL SPECIFIED ON THIS DRAWING NOTIFY THE PURCHASER PROMPTLY.		DIMENSIONS IN INCHES UNLESS OTHERWISE SPECIFIED					
MAXIMUM ALLOWABLE TOLERANCES HAVE BEEN DETERMINED AND DEVIATIONS WILL BE CAUSE FOR REJECTION. REMOVE ALL BURRS AND SHARP EDGES		OTHERWISE SPECIFIED					
ISSUE	ITEM	CHANGED FROM	DATE	CN. NO.	DRAFTS	CHECKER	ENG. APP.
Ø		PROD RELEASE	28 AUG 70		SB		NAH

REQ.	ITEM	PART NO.	DESCRIPTION	SYMBOL
------	------	----------	-------------	--------

Ø
TR10005-RCA



TOLERANCES UNLESS OTHERWISE SPECIFIED	SCALE: 1:1
ALL OTHERS	DRILL, PUNCH, COMMERCIAL STOCK SIZES AND MANUFACTURERS TOLERANCES ARE NOT INCLUDED.
DEC. DIM. ± 1/64	
ANGULAR DIM. ± 0°30'	
XX = .01	
XXX = .005	

AMC 8	074/70		28 AUG 70
MODEL	PROJECT NO.	ASS. Y. NO.	DATE
USED ON			

STOCK SIZE		TMC (Canada) LIMITED OTTAWA ONTARIO	
TRANSFORMER R.F.			
MATERIAL	WEIGHT PER PC.		
TYPE & TEMPER		EMERSON	NAH
		DRAWN	ELEC. DES. APP.
HEAT TREAT. SPEC.		FINAL APPROVAL	
		CHECKED	
FINISH & SPEC. NO.		TR10005-RCA	