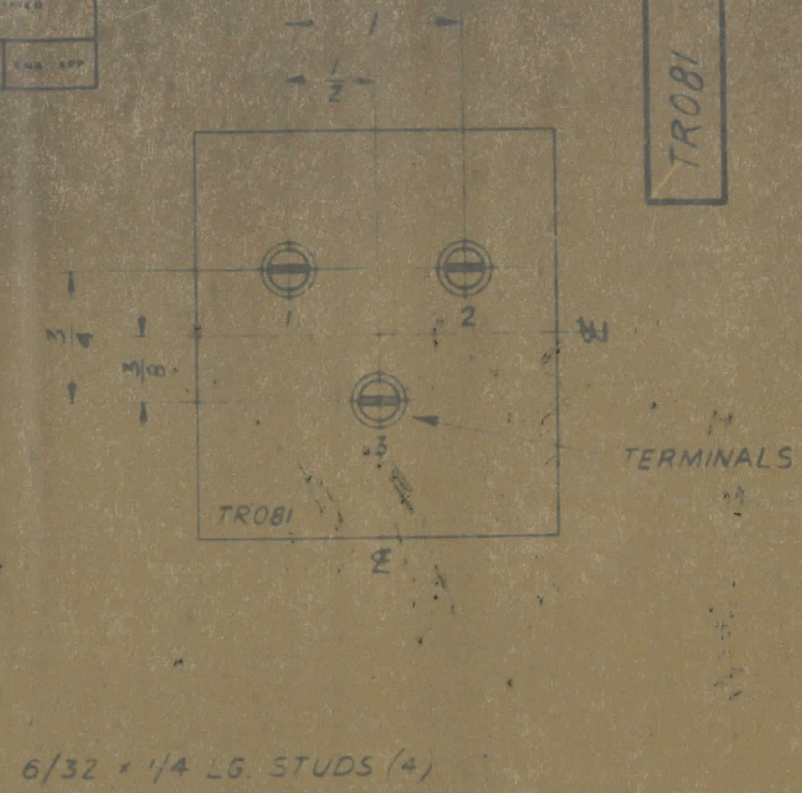


REV	ITEM	PART NO	DESCRIPTION	SYMBOL
-----	------	---------	-------------	--------

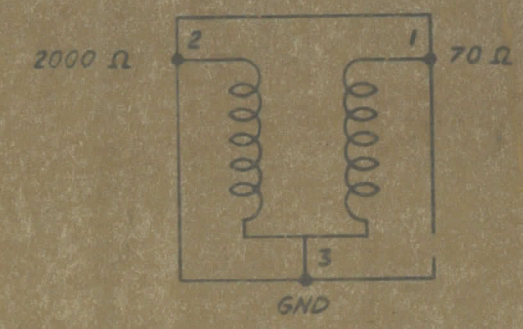
IT IS TO BE UNDERSTOOD THAT THE DIMENSIONS SPECIFIED IN THIS DRAWING MUST BE MAINTAINED AS SHOWN UNLESS OTHERWISE SPECIFIED.

MAXIMUM ALLOWABLE TOLERANCES HAVE BEEN SET FORTH AND DEVIATIONS MUST BE KEPT TO A MINIMUM.

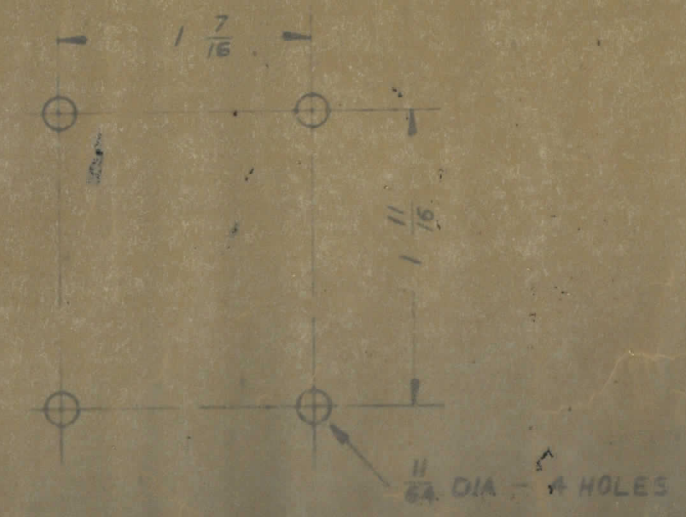
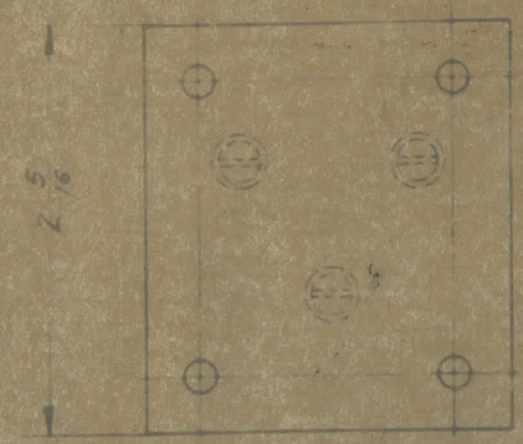
DATE	DESIGN	ANALYST	DATE	CN. NO.	DRAFTS	CHECKED	ENG. APP.
------	--------	---------	------	---------	--------	---------	-----------



TRO 81
ELECTRICAL SPECIFICATIONS
 FREQ. RANGE 15 k/c - 3 m/c



MECHANICAL SPECIFICATIONS
 LENGTH: 2 - 5/16"
 WIDTH: 2 - 1/16"
 HEIGHT: 2 - 1/2" (EXCLUDING TERMINALS)
 NO. TERMINALS: 3 CERAMIC TURRET TYPE
 MOUNTING: (4) 6-32 x 1/4" STUDS
 FINISH: TMC GREY (S-115)



TOLERANCES		SCALE 1:1
DRILL DIM	1/64	DRILL NUMBER, COMMERCIAL STOCK
ANGULAR DIM		SIZES AND MANUFACTURERS
		TOLERANCES ARE NOT INCLUSIVE

VRA-12	020/65	510264	1-7-65
--------	--------	--------	--------

STOCK SIZE		TMC (Canada) LIMITED	
		OTTAWA	ONTARIO
MATERIAL		XFMR - INPUT	
WEIGHT PER PC		BROADBAND - RF	
TYPE & TEMPER	NEW	REV	MECH DES APP
		MECH DES APP	
HEAT TREAT SPEC	CHECKED	FINAL APPROVAL	
		TROBI	