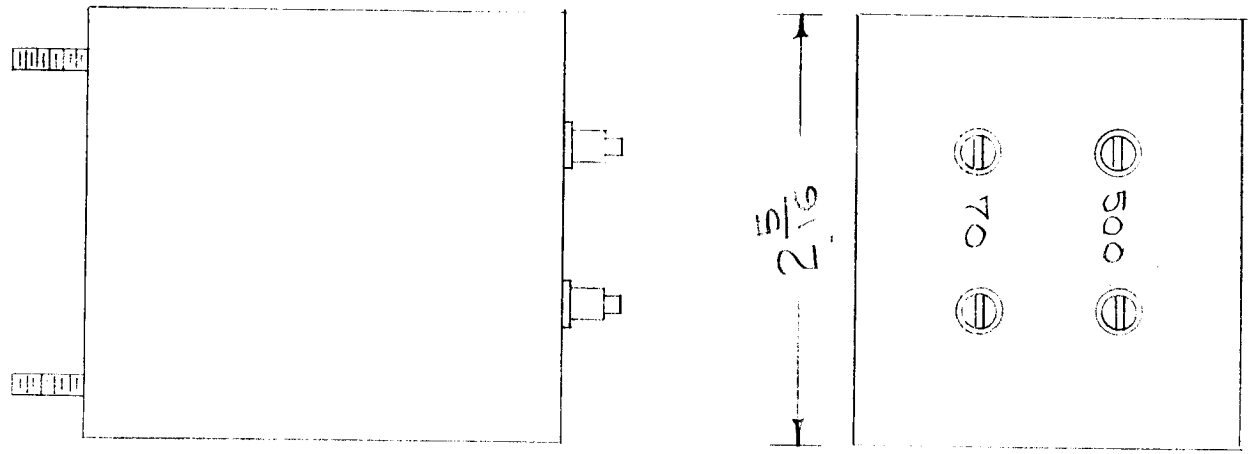


IF IT IS FOUND DESIRABLE TO CHANGE ANY TOLERANCE OR OTHER DETAIL SPECIFIED ON THIS DRAWING NOTIFY THE PURCHASER PROMPTLY.

TR-061 B

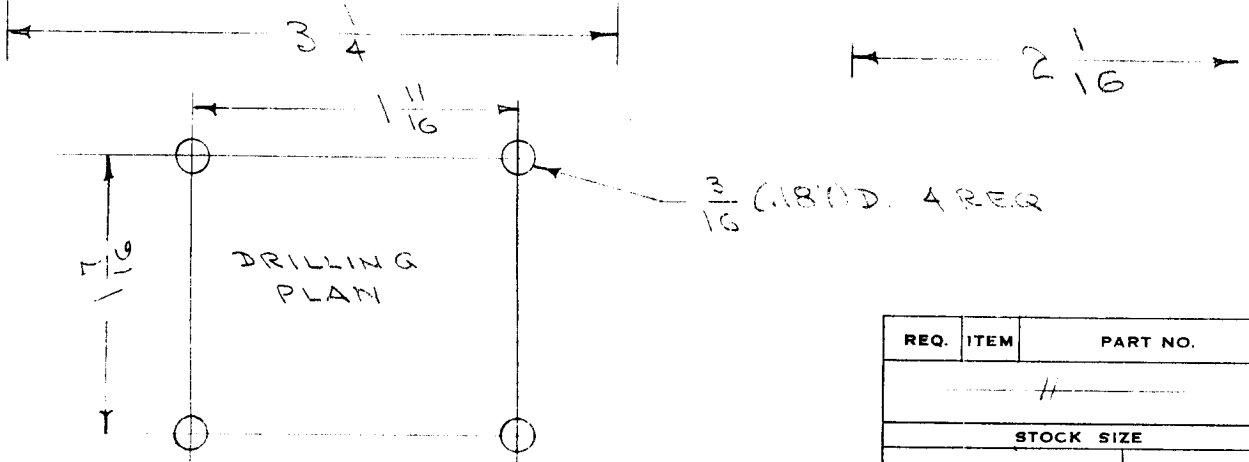
MAXIMUM ALLOWABLE TOLERANCES HAVE BEEN DETERMINED AND DEVIATIONS WILL BE CAUSE FOR REJECTION. REMOVE ALL BURRS AND SHARP EDGES

REQ. PER UNIT	USED ON			
	MODEL	PROJECT NO.	ASS'Y. NO.	DATE
1	RAC-13			8/3/55



MECHANICAL SPECIFICATIONS
 1- CASE - STEEL
 2- TERMINALS - CERAMIC
 3- FILLER - COMPOUND
 4- FINISH - GREY
 5- STUDS - 6-32 X 3/8

ELECTRICAL SPECIFICATIONS
 1- INPUT - 500 Ω BAL.
 2- OUTPUT - 70 Ω UNBAL.
 3- RESPONSE - 2-30 Mcs. ± 3db.



NOTE-TR-061(TMC NEW YORK VERSION) HAS BEEN REPLACED BY TR-168(A-2207)

REQ.	ITEM	PART NO.	DESCRIPTION	SYMBOL
			THE TECHNICAL MATERIEL CORP. MAMARONECK, NEW YORK	
			TRANSFORMER, R.F.	
			2-30 Mcs.	
			ADD 8-3-55	ARB
			DRAWN	ELEC. DES. APP. MECH. DES. APP.
			CHECKED	FINAL APPROVAL
				TR-061 B

B	1	Note Added	11-7-61	5817	IE	EA	SM
A	1	DIM. CHGD FROM 2 1/4 TO 2-1/16 X 2-1/16 AS PER BX-100-B	5/58	1	16	HA	JA
ISSUE	ITEM	CHANGED FROM	DATE	CN. NO.	DRAFTS	CHECKER	ENG. APP.
TOLERANCES			SCALE				
ALL OTHERS		DEC. DIM. ± FRAC. DIM. ± ANGULAR DIM. ±	DRILL, PUNCH, COMMERCIAL STOCK SIZES AND MANUFACTURERS TOLERANCES ARE NOT INCLUDED.				