

IF IT IS FOUND DESIRABLE TO CHANGE ANY TOLERANCE OR OTHER DETAIL SPECIFIED ON THIS DRAWING NOTIFY THE PURCHASER PROMPTLY.

TR-057 C

MAXIMUM ALLOWABLE TOLERANCES HAVE BEEN DETERMINED AND DEVIATIONS WILL BE CAUSE FOR REJECTION. REMOVE ALL BURRS AND SHARP EDGES

USED ON

AMC 6-2
AMC 6-3

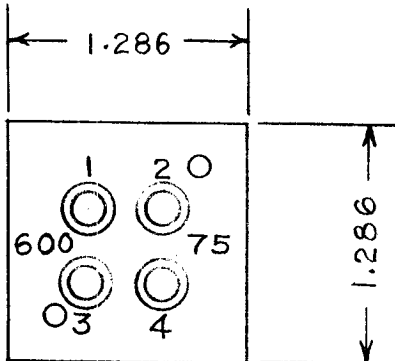
A-10038

MODEL

PROJECT NO.

ASS'Y. NO.

DATE

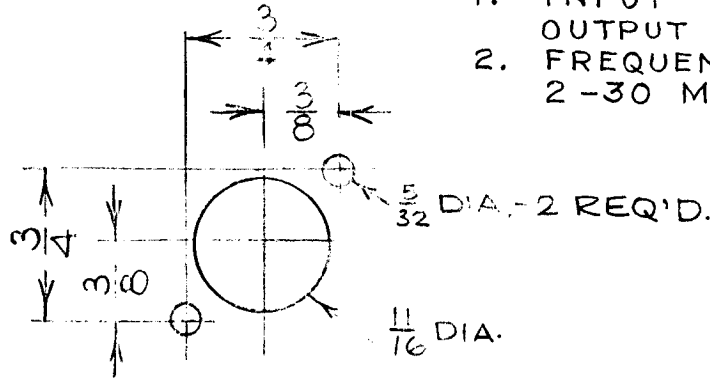
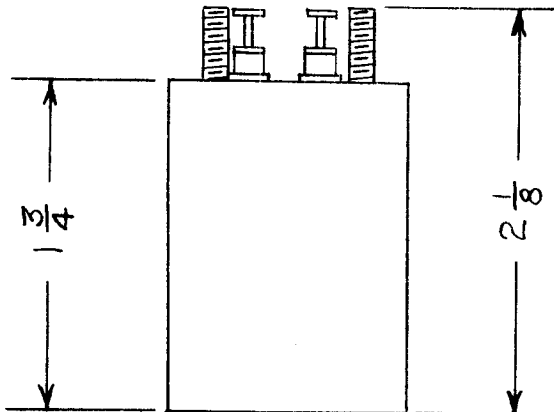


MECHANICAL SPECIFICATIONS

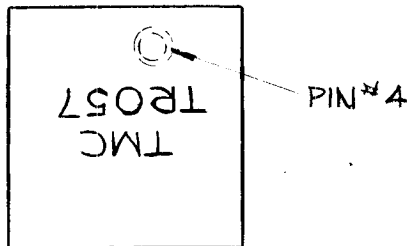
1. CASE - STEEL
2. TERMINALS - CERAMIC
3. FILLER - COMPOUND
4. FINISH - GREY
5. STUDS - 6-32 x $\frac{3}{8}$

ELECTRICAL SPECIFICATIONS

1. INPUT 1-3 600 Ω UNBALANCED
OUTPUT 2-4 75 Ω UNBALANCED
2. FREQUENCY RESPONSE
2-30 MC. \pm 1 DB.



MOUNTING DIM.



REQ.	ITEM	PART NO.	DESCRIPTION	SYMBOL
			TMC (Canada) LIMITED	
STOCK SIZE			OTTAWA	ONTARIO
			R.F. TRANSFORMER	
MATERIAL			OUTPUT	
WEIGHT PER PC.				
TYPE & TEMPER			J.W.T.	
			DRAWN	ELEC. DES. APP. MECH. DES. APP.
HEAT TREAT. SPEC.			CHECKED	FINAL APPROVAL
FINISH & SPEC. NO.			A-10038	TR-057 C

C	1	PIN #4 ADDED TO BOT TOM VIEW	12-2-62	7672			
ISSUE	ITEM	CHANGED FROM	DATE	CN. NO.	DRAFTS	CHECKER	ENG. APP.

TOLERANCES		SCALE FULL SIZE
ALL OTHERS	DEC. DIM. \pm FRAC. DIM. \pm ANGULAR DIM. \pm	DRILL, PUNCH, COMMERCIAL STOCK SIZES AND MANUFACTURERS TOLERANCES ARE NOT INCLUDED.