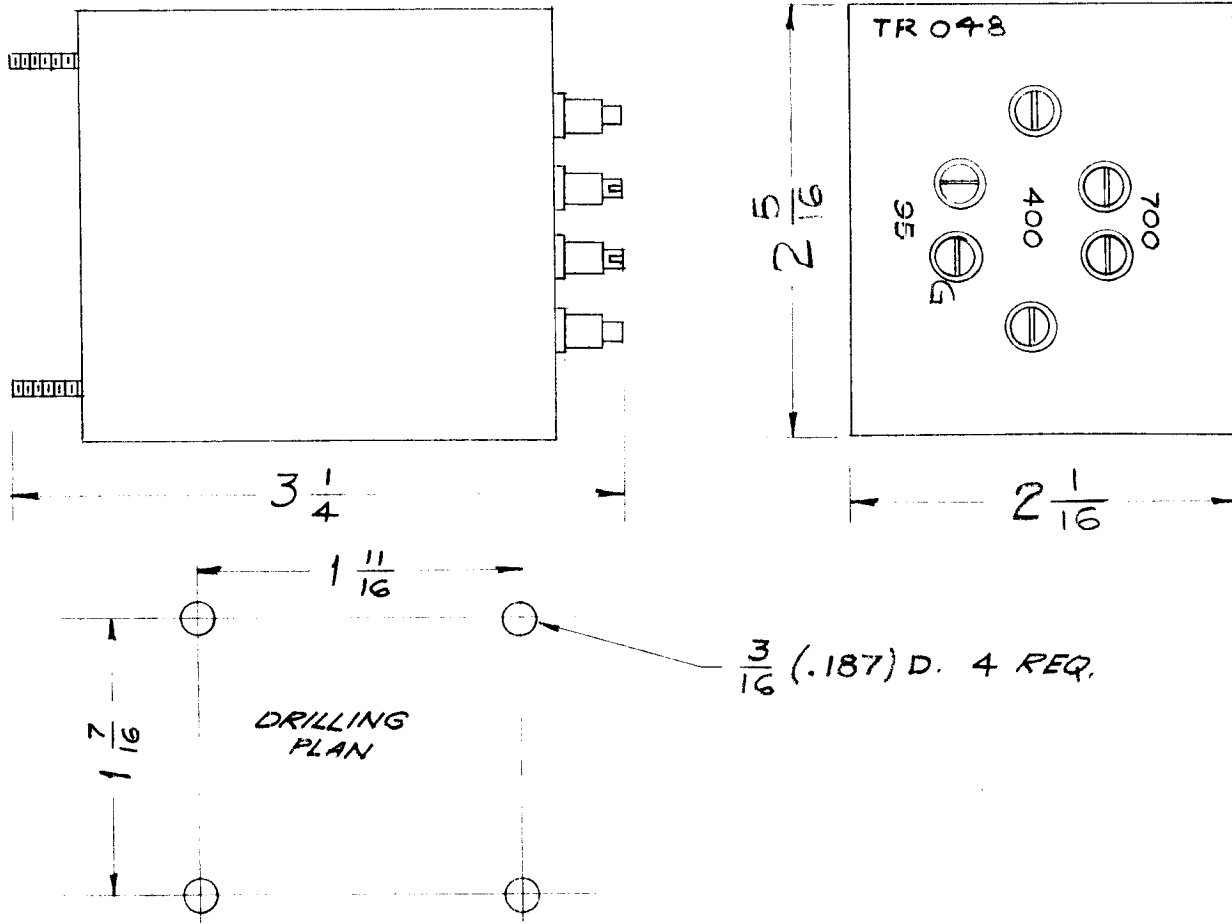


REQ. PER UNIT	USED ON			TR-048	B
	MODEL	ASS'Y. NO.	DATE		
1	RAC-3	A-1463	9-10-57		



MECHANICAL SPECIFICATION:

1. CASE, STEEL
2. TERMINALS, CERAMIC
3. FILLER, COMPOUND
4. FINISH, GRAY
5. STUDS, 6-32 X 3/8

ELECTRICAL SPECIFICATION:

1. IMPEDANCE
700 OHMS BALANCED
TO 95 OHMS UNBALANCED
OR
400 OHMS BALANCED
TO 95 OHMS UNBALANCED.
2. RESPONSE
2 TO 30 MCS ± .5db.

ISSUE	ITEM	CHANGED FROM	DATE	CH. NO.	DRAFTS	CHECKER	ENG. APP.	REQ. ITEM	PART NO.	DESCRIPTION	SYMBOL	
B	1	ELEC. SPEC. CHART #2 (±1.5db) WAS (±3db)	2-1-62	6285	G.S.	CG	CG			THE TECHNICAL MATERIEL CORP. MAMARONECK, NEW YORK TRANSFORMER RF 2 TO 30 MCS		
A	1	DIM. CHGD FROM 2 X 2-1/4 TO 2-1/16 X 2-5/16 AS PER BX-107	1/9/58	1	16	H. J. C.	H. J. C.					
ISSUE ITEM		CHANGED FROM	DATE	CH. NO.	DRAFTS	CHECKER	ENG. APP.					
TOLERANCES			SCALE:	4A-1462						9-10-57	H. J. C.	APP
DEC. DIM. ± FRAC. DIM. ± ANGULAR DIM. ±			MAXIMUM ALLOWABLE TOLERANCES HAVE BEEN DETERMINED AND ANY DEVIATIONS WILL BE CAUSE FOR REJECTION. REMOVE ALL BURRS AND SHARP EDGES					TYPE & TEMPER	HEAT TREAT. SPEC.	DRAWN	CHECKED	FINAL APPROVAL
								FINISH & SPEC. NO.	ELEC. DES. APP.	MECH. DES. APP.	TR-048	B