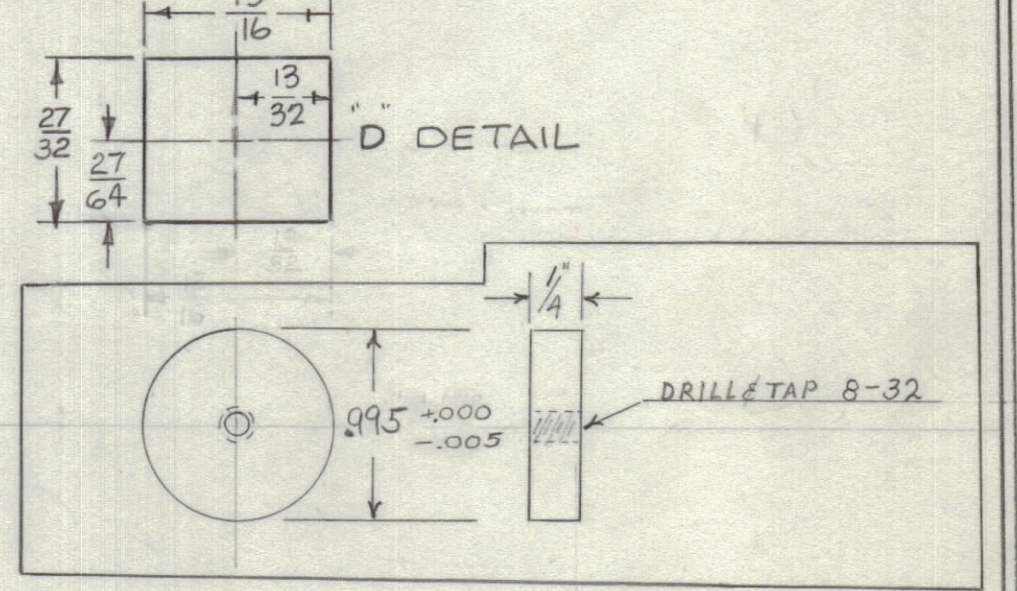


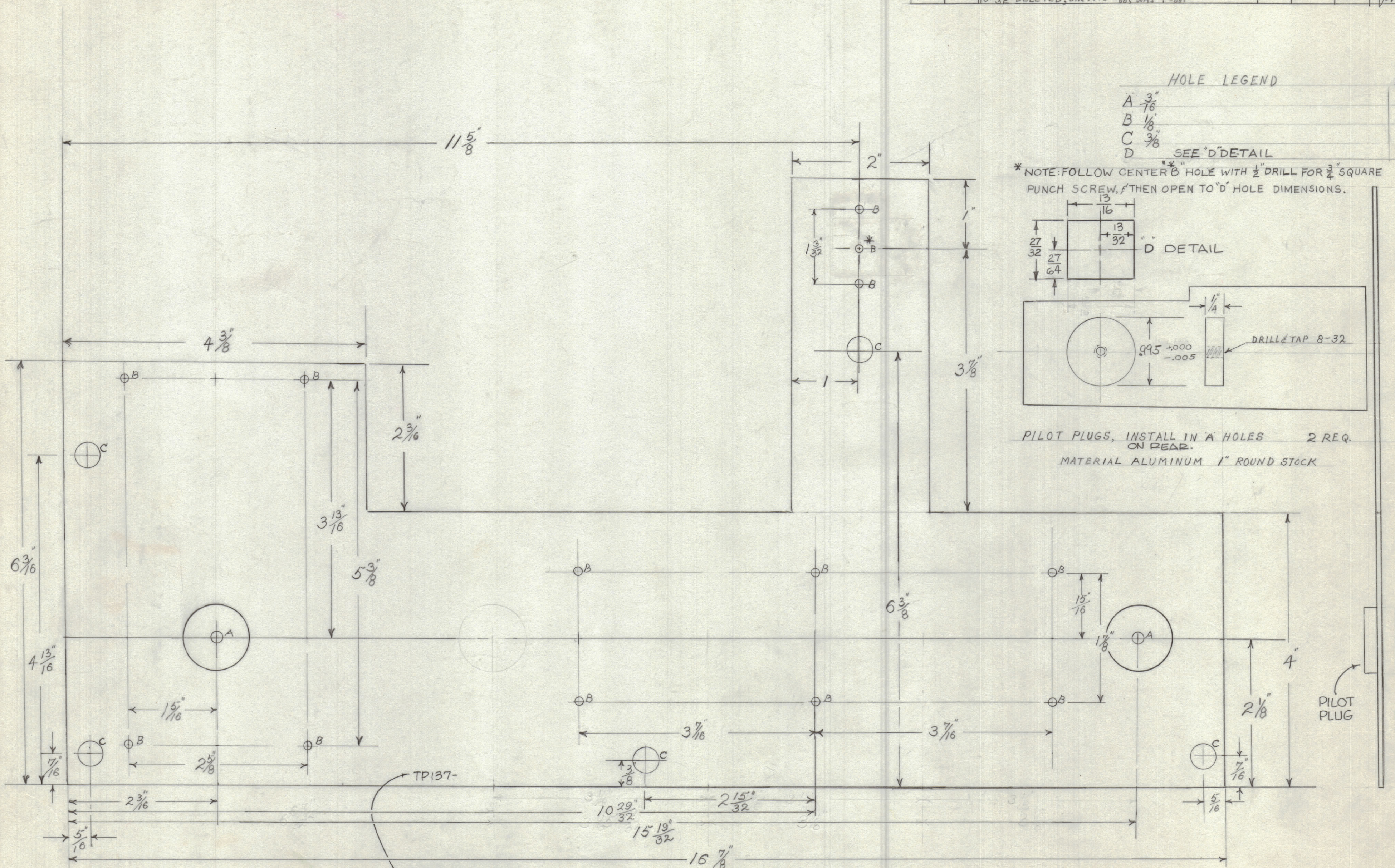
| REVISIONS | | | | | | |
|-----------|-----|---|---------|------------|--------|---------------|
| ZONE | SYM | DESCRIPTION | DATE | E.M.N. NO. | DRAFT | CHKD |
| | Ø | ORIGINAL RELEASE FOR PRODUCTION | 5/18/65 | | | BB |
| | A | "D" SEE DETAIL & NOTE ADDED, "B" HOLE IS WAS 12 QTY. | 6/24/65 | 14331 | D.V.V. | Q.P.A. J.C.C. |
| | | 12, 27, 16, 32 DELETED, DIM. .995 \pm .005 WAS 1 \pm .005 | | | | |

| HOLE LEGEND | | REQ. |
|-------------|------------------|------|
| A | $\frac{3}{16}$ " | 2 |
| B | $\frac{1}{8}$ " | 13 |
| C | $\frac{3}{8}$ " | 5 |
| D | SEE "D" DETAIL | 1 |

* NOTE: FOLLOW CENTER "B" HOLE WITH $\frac{1}{2}$ " DRILL FOR $\frac{3}{4}$ " SQUARE PUNCH SCREW, THEN OPEN TO "D" HOLE DIMENSIONS.



PILOT PLUGS, INSTALL IN "A" HOLES 2 REQ. ON REAR.
MATERIAL ALUMINUM 1" ROUND STOCK



METAL STAMP TMC
PT. NO. 1/8 HIGH
GOTHIC, W/LATEST
REVISION LETTER

FRONT VIEW SHOWN

| REQ'D. | ITEM | PART NUMBER | DESCRIPTION | SYMBOL |
|---------------------------------------|------|-------------|--|--------|
| EATON LIST OF MATERIAL | | | | |
| MATERIAL | | | THE TECHNICAL MATERIEL CORP. MAMARONECK, NEW YORK | |
| .002 ALUMINUM 5052-H32 | | | TITLE | |
| FINISH | | | TEMPLATE, LEDEX BRACKET MTG. PANEL REAR | |
| S404 YEL. IRIDITE | | | DRAWN | |
| UNLESS OTHERWISE SPECIFIED | | | DATE | |
| DIMENSIONS ARE IN INCHES AND INCLUDE | | | 5/18/65 | |
| CHEMICALLY APPLIED OR PLATED FINISHES | | | CHECKED | |
| DECIMALS | | | DATE | |
| .X \pm .05 | | | 5/19/65 | |
| .XX \pm .01 | | | DATE | |
| .XXX \pm .005 | | | TP137 | |
| FRACTIONS | | | REV. LTR. | |
| \pm 1/64 | | | A | |
| ANGLES | | | SHEET | |
| \pm 0° 30' | | | REV. LTR. | |

| QTY./UNIT | MODEL USED ON | ASS'Y. NO. |
|-----------|---------------|------------|
| 1:1 | HFSR-1 | AX220 |

NOTES

THE CONTENTS OF THIS DRAWING ARE THE EXCLUSIVE PROPERTY OF THE TECHNICAL MATERIEL CORP. ITS UNAUTHORIZED USE OR REPRODUCTION IN WHOLE OR IN PART IS STRICTLY FORBIDDEN.