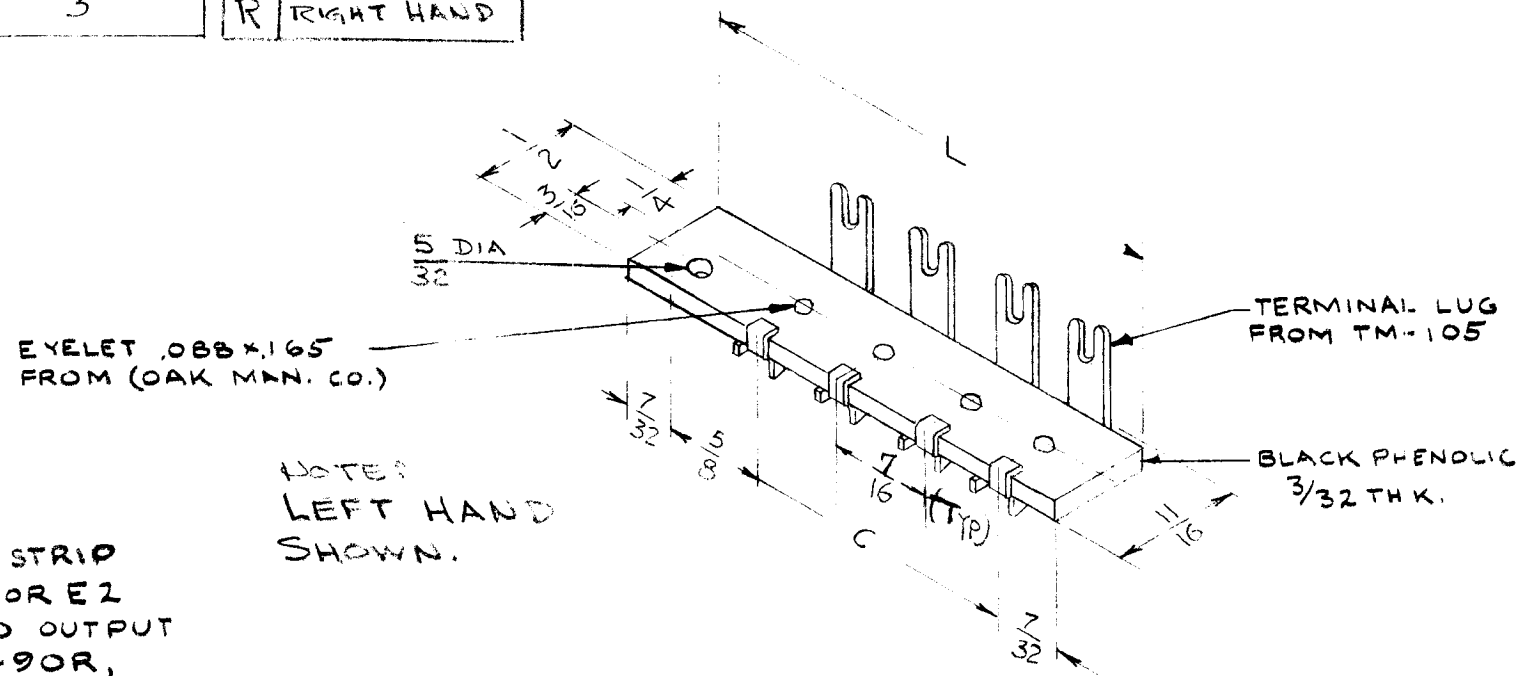


C	L	No TERMINALS	SYM	TYPE
1.512	2 3/8	4	L	LEFT HAND
1.750	2 13/16	5	R	RIGHT HAND

REQ. PER. UNIT	USED ON		
	MODEL	ASS'Y. NO.	DATE
	SYM-1023		2-8-61

TM-123



NOTE:
SPECIAL FANNING STRIP
TO MATE WITH E1 OR E2
ANT INPUT & AUDIO OUTPUT
ON GPR-90, GPR-90R,
GPR90RX AND GPR90RXD.

NOTE:
LEFT HAND
SHOWN.

NO. OF TERMINALS TO BE AS FOLLOWS

TM-123-4-L
BASE NO. NO. OF TERMINALS
(SEE CHART)

ISSUE	ITEM	CHANGED FROM	DATE	CH. NO.	DRAFTS	CHECKER	ENG. APP.	REQ.	ITEM	PART NO.	DESCRIPTION	SYMBOL
								THE TECHNICAL MATERIEL CORP. MAMARONECK, NEW YORK.				
								STOCK SIZE				
								MATERIAL				
								FANNING STRIP FOR TM-116				
								DRAWN [Signature] CHECKED [Signature] FINAL APPROVAL F.O.S.				
								TYPE & TEMPER HEAT TREAT. SPEC. DRAWN [Signature] CHECKED [Signature] FINAL APPROVAL TM-123				
								FINISH & SPEC. NO. ELEC. DES. APP MECH. DES. APP				