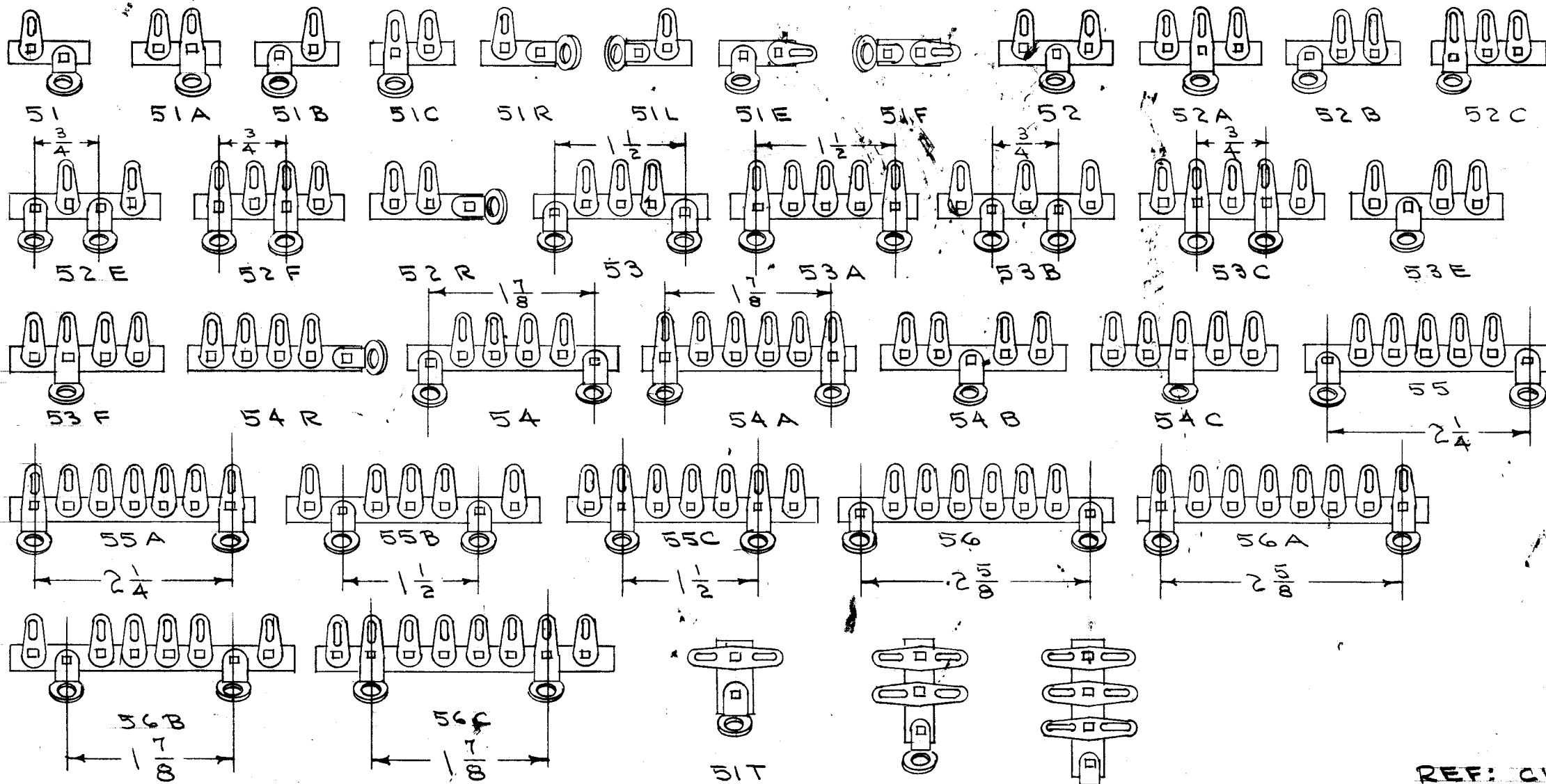
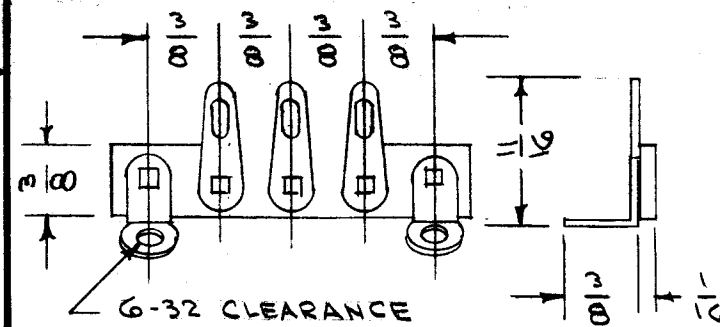


IF IT IS FOUND DESIRABLE TO CHANGE ANY TOLERANCE OR OTHER DETAIL SPECIFIED ON THIS DRAWING NOTIFY THE PURCHASER PROMPTLY.

MAXIMUM ALLOWABLE TOLERANCES HAVE BEEN DETERMINED AND DEVIATIONS WILL BE CAUSE FOR REJECTION. REMOVE ALL BURRS AND SHARP EDGES

STANDARD DRAWING

TM-117



TMC NO.	JOBBER CAT. NO.	CINCH CAT. NO.
TM-117 -1	51	1510
-2	51A	1510A
-3	51B	1513
-4	51C	1513A
-5	51R	1215R
-6	51L	1215L
-7	51E	1511
-8	51F	
-9	51T	1514
-10	52	1520
-11	52A	1520A
-12	52B	1525
-13	52C	1857
-14	52E	
-15	52F	
-16	52R	1522C
-17	52T	1522
-18	53	
-19	53A	
-20	53B	1530
-21	53C	1530A
-22	53E	1532
-23	53F	1532A
-24	53T	1532C
-25	54	1540
-26	54A	1540A
-27	54B	1542
-28	54C	1542A
-29	54R	
-30	55	
-31	55A	
-32	55B	
-33	55C	
-34	56	
-35	56A	
-36	56B	
-37	56C	
-38		
-39		1529A

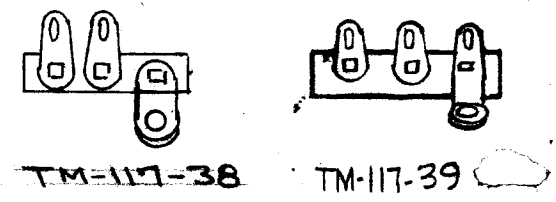
REF: CINCH JONES CO.

REQ. ITEM	PART NO.	DESCRIPTION	SYMBOL
STOCK SIZE		THE TECHNICAL MATERIEL CORP. MAMARONECK. NEW YORK.	
MATERIAL		TERMINAL STRIP.	
WEIGHT PER PC.			
TYPE & TEMPER		DRAWN: [Signature] ELEC. DES. APP. [Signature] MECH. DES. APP. [Signature]	
HEAT TREAT. SPEC.		CHECKED: [Signature] FINAL APPROVAL: [Signature]	
FINISH SPEC. NO.		TM-117	

ISSUE	ITEM	CHANGED FROM	DATE	CN. NO.	DRAFTS	CHECKER	ENG. APP.
C	1	-39 ADDED	11-22-60	3556	Dom	JCB	[Signature]
B	1	-38 ADDED	5/5/58	2	JCB	[Signature]	[Signature]
A	1	CINCH #5 ADDED	1/15/56	1	JCB	[Signature]	[Signature]

TOLERANCES		SCALE:	
ALL OTHERS	DEC. DIM. ± FRAC. DIM. ± ANGULAR DIM. ±	DRILL, PUNCH, COMMERCIAL STOCK SIZES AND MANUFACTURERS TOLERANCES ARE NOT INCLUDED.	REQ. PER UNIT

MODEL	PROJECT NO.	ASSY. NO.	DATE

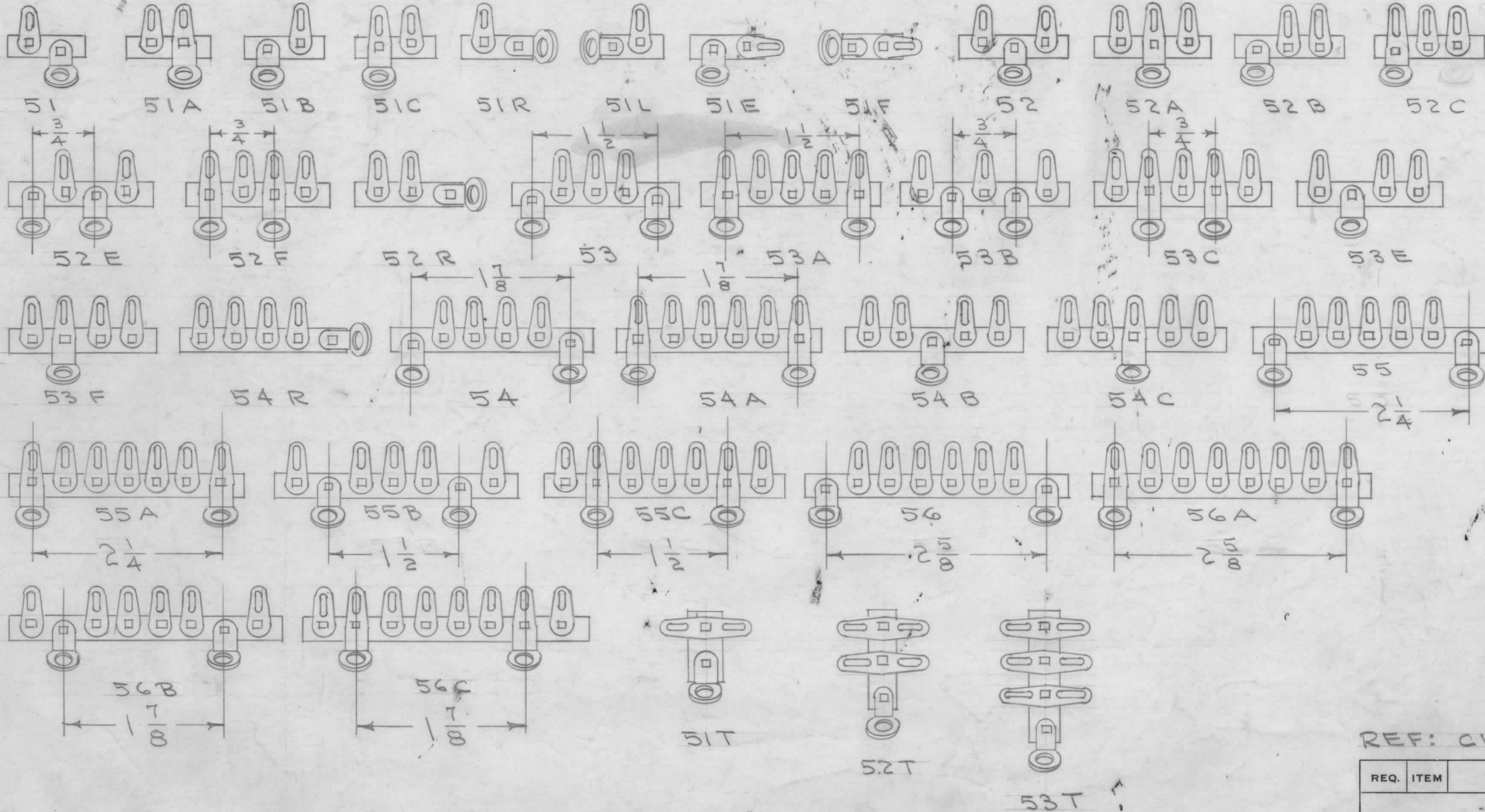
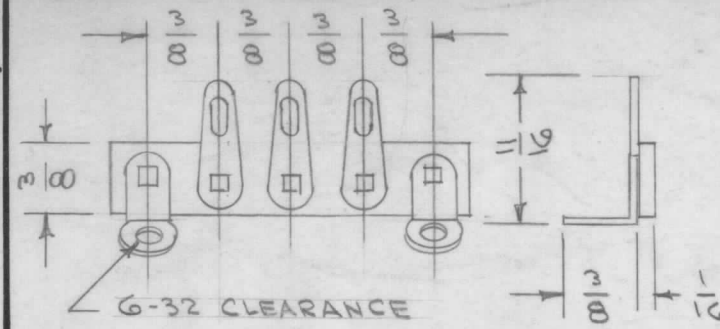


IF IT IS FOUND DESIRABLE TO CHANGE ANY TOLERANCE OR OTHER DETAIL SPECIFIED ON THIS DRAWING NOTIFY THE PURCHASER PROMPTLY.

MAXIMUM ALLOWABLE TOLERANCES HAVE BEEN DETERMINED AND DEVIATIONS WILL BE CAUSE FOR REJECTION. REMOVE ALL BURRS AND SHARP EDGES

STANDARD DRAWING

TM-117



TMC No.	JOBBER CAT. NO.	CINCH CAT. NO.
TM-117 -1	51	1510
-2	51A	1510A
-3	51B	1513
-4	51C	1513A
-5	51R	1215R
-6	51L	1215L
-7	51E	1511
-8	51F	
-9	51T	1514
-10	52	1520
-11	52A	1520A
-12	52B	1525
-13	52C	1857
-14	52E	
-15	52F	
-16	52R	1522C
-17	52T	1522
-18	53	
-19	53A	
-20	53B	1530
-21	53C	1530A
-22	53E	1532
-23	53F	1532A
-24	53T	1538C
-25	54	1540
-26	54A	1540A
-27	54B	1542
-28	54C	1542A
-29	54R	
-30	55	
-31	55A	
-32	55B	
-33	55C	
-34	56	
-35	56A	
-36	56B	
-37	56C	
-38		
-39		1529A

REF: CINCH JONES CO.

REQ. ITEM	PART NO.	DESCRIPTION	SYMBOL
THE TECHNICAL MATERIEL CORP.			
MAMARONECK. NEW YORK.			
TERMINAL STRIP			
STOCK SIZE			
MATERIAL		WEIGHT PER PC.	
TYPE & TEMPER		500-A-27-55	
HEAT TREAT. SPEC.		DRAWN	
FINISH & SPEC. NO.		ELEC. DES. APP.	
		MECH. DES. APP.	
		CHECKED	
		FINAL APPROVAL	
		TM-117	

C	1	-39 ADDED	11-22-60	3556	DM	JCB	
B	1	-38 ADDED	5/5/58	2	JCB		
A	1	CINCH #5 ADDED	4/15/56	1	COB		

ISSUE	ITEM	CHANGED FROM	DATE	CN. NO.	DRAFTS	CHECKER	ENG. APP.
TOLERANCES			SCALE:				
ALL OTHERS			DRILL, PUNCH, COMMERCIAL STOCK SIZES AND MANUFACTURERS TOLERANCES ARE NOT INCLUDED.				

REQ. PER UNIT	MODEL	PROJECT NO.	ASS'Y. NO.	DATE

