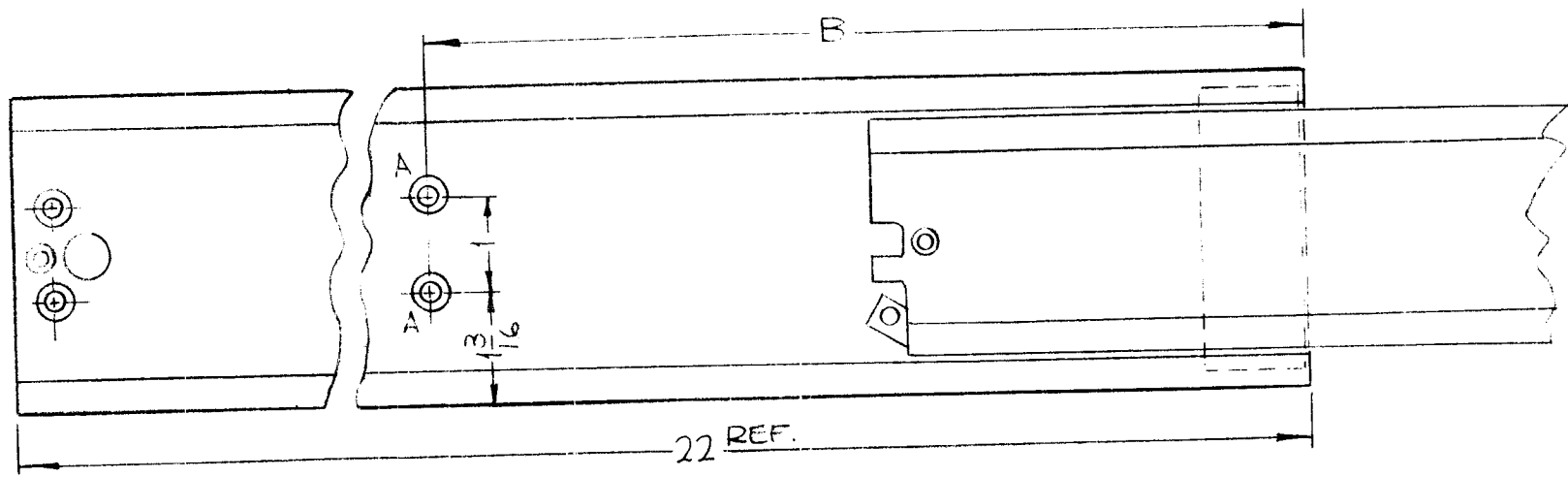


TMC NO.	DIM. B
TK124-1	17 1/4
TK124-2	11 1/4

REQ. PER UNIT	USED ON		
	MODEL	ASS'Y. NO.	DATE
	COPA-2	A 4017	11-18-64

TK124 \emptyset

HOLE	DESCRIPTION	REQ
A	DR. .196 DIA. C'SINK 82° TO .390 D.	2



RIGHT SIDE SHOWN
LEFT SIDE OPP. HAND

				1	1	TK 115-22	TRACK & SLIDE SET			
				REQ. ITEM	PART NO.		M. STURMER	DESCRIPTION	SYMBOL	
				STOCK SIZE		THE TECHNICAL MATERIEL CORP. MAMARONECK, NEW YORK				
				MATERIAL		TRACK & SLIDE SET, 3 1/2" WIDE TILT TYPE				
				SCALE		DRAWN		CHECKED	FINAL APPROVAL	
				TYPE & TEMPER		HEAT TREAT. SPEC.		ELEC. DES. APP. MECH. DES. APP.		
				FINISH & SPEC. NO.		SRG 11-22-65		TK124 \emptyset		
UNLESS OTHERWISE SPECIFIED DIMENSIONS ARE IN INCHES AND INCLUDE CHEMICALLY APPLIED OR PLATED FINISHES				DATE		CH. NO.		DRAFTS		
ORIGINAL RELEASE FOR PRODUCTION				1-26-65		82				
EXP. RELEASE				11-18-64		X		SRG		
DECIMALS .X ± .05 .XX ± .01 .XXX ± .005				FRACTIONS ± 1/64 ANGLES ± 0° 30'				TOLERANCES		CODE A