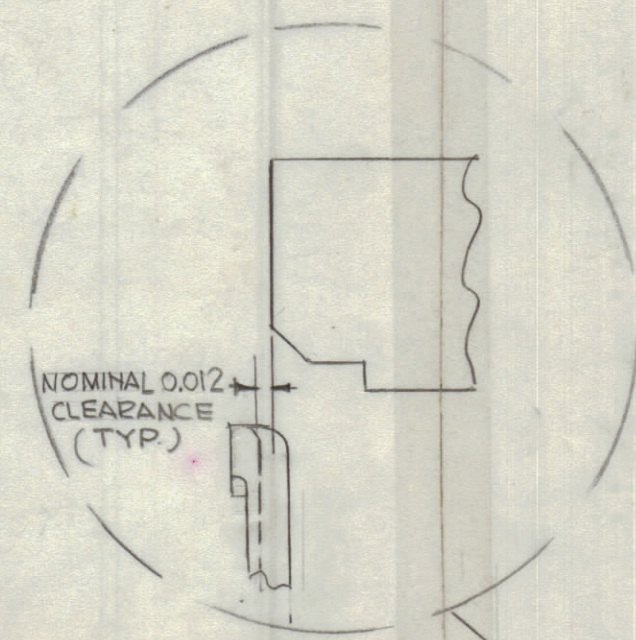
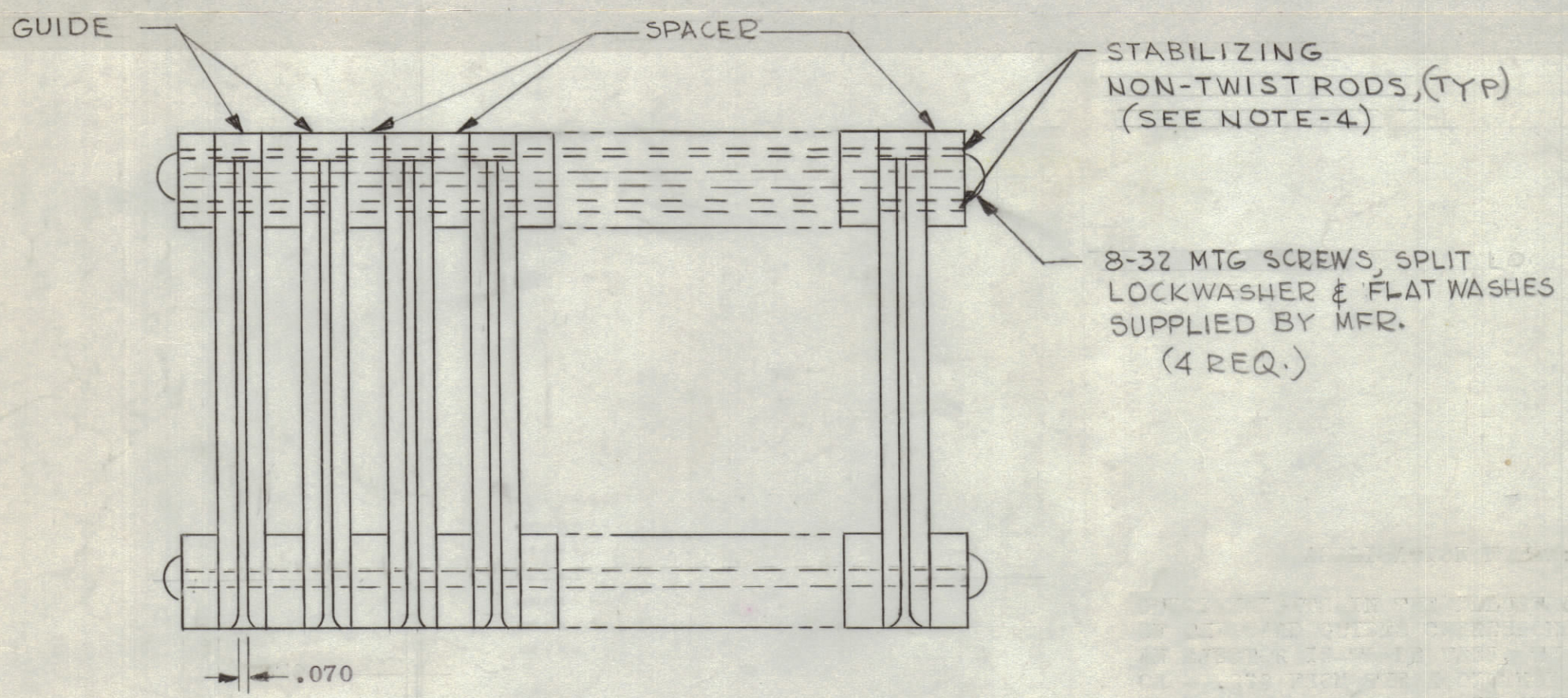


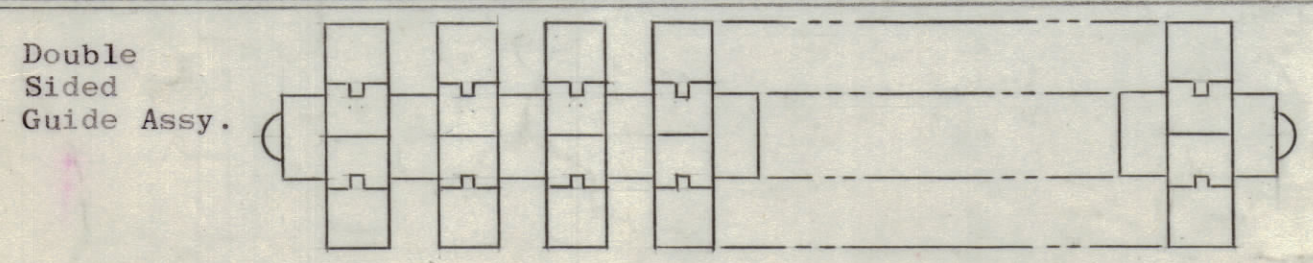
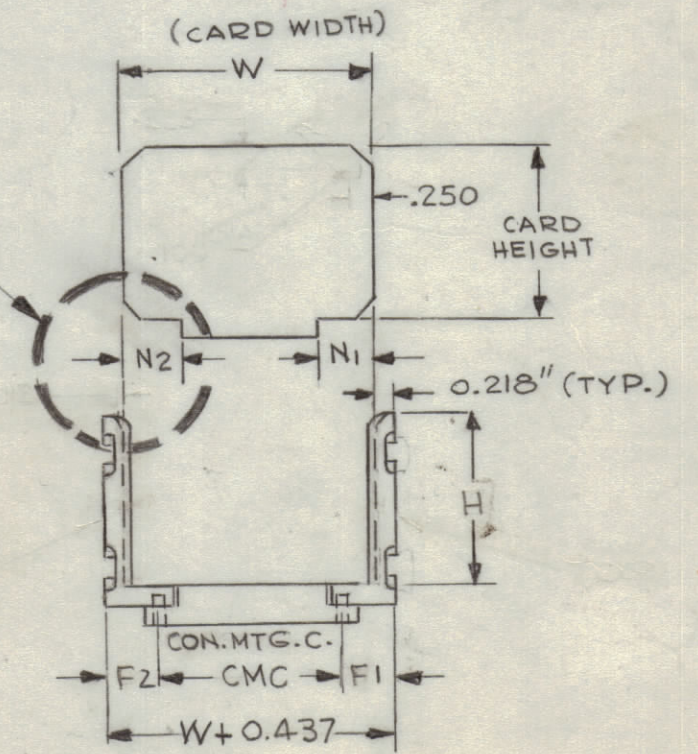
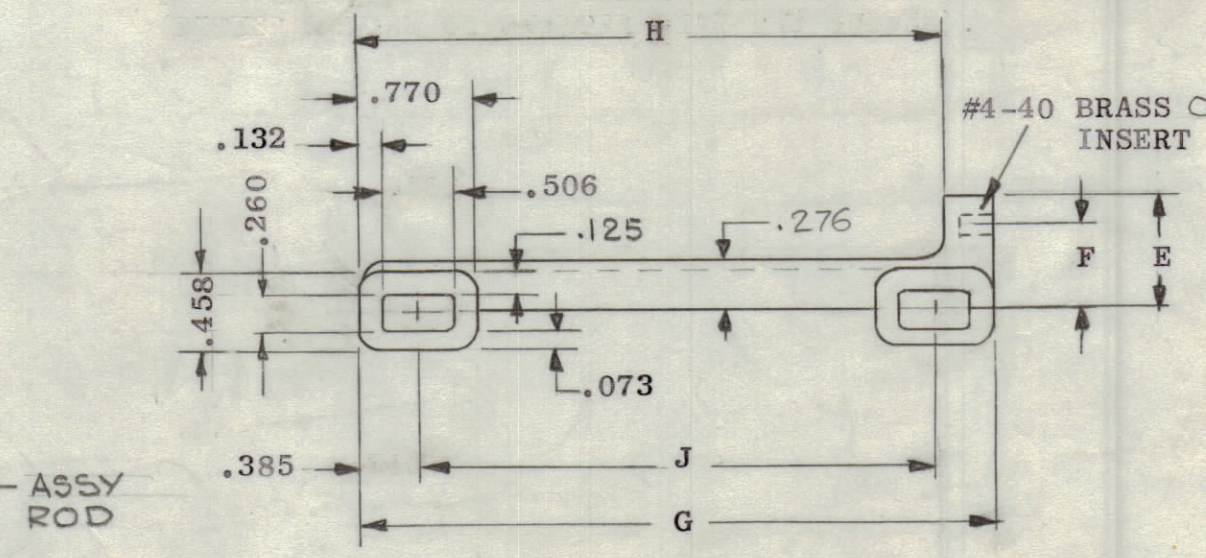
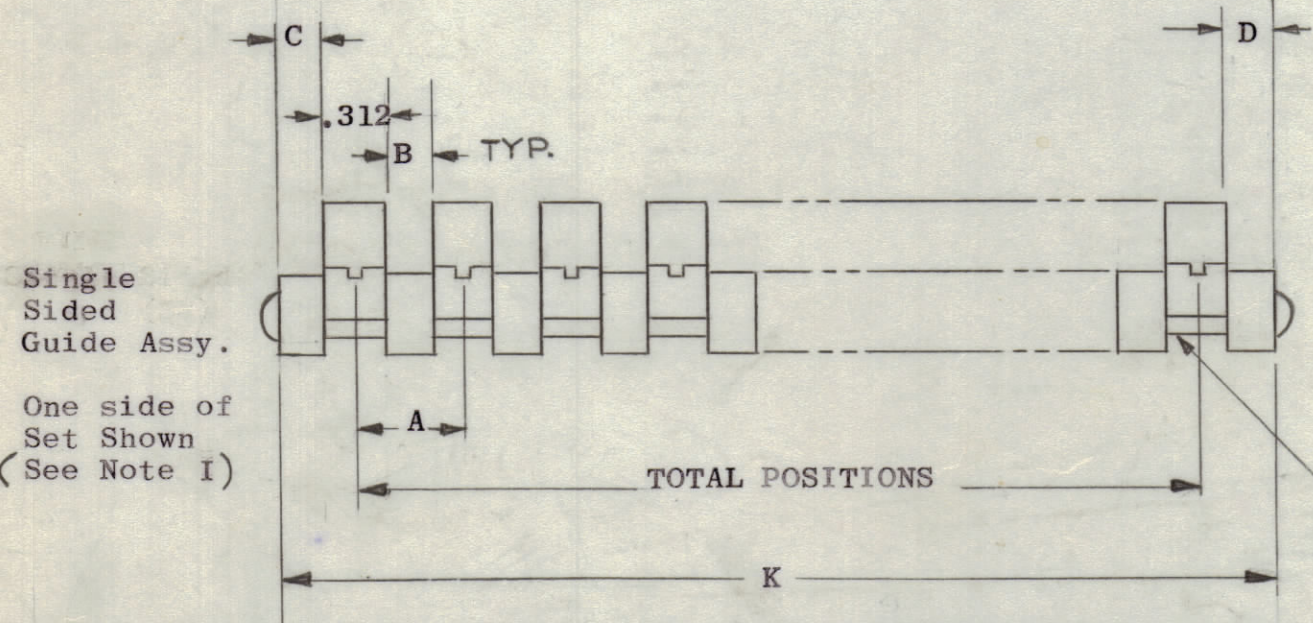
TMC PART NUMBER	MANUFACTURER PART NO.	TOTAL POS.	DIMENSIONS										GUIDE TYPE
			A	B ±.004	C ±.004	D ±.004	E	F	G	K ±.046	H	J	
TK122-1	R310-7/I.000-39C	7	1.00	.687	.125	.813	.510	.390	4.062	7 I/4	3.875	3.290	Single Sided
TK122-2	R310-15/I.000-39C	15	1.00	.687	.125	.813	.510	.390	4.062	15 I/4	3.875	3.290	Single Sided
TK122-3	R310-5/I.000-28C	5	1.00	.687	.187	.843	.510	.390	2.937	5.375	2.750	2.165	Single Sided
TK122-4	R310-9/I.000-28C	9	1.00	.687	.187	.843	.510	.390	2.937	9.375	2.750	2.165	Single Sided
TK122-5	R320-9/I.000-28C	9	1.00	.687	.187	.843	.510	.390	2.937	9.375	2.750	2.165	Double Sided

REVISIONS						
ZONE	SYM	DESCRIPTION	DATE	E.M.N. NO.	DRAFT	CHKD APPD
	X1	ADDED DOUBLE SIDED ASSY PICT.; NOTES & PARTS TK122-3, 4 & 5.	1/10/66		JL	Hde
	Ø	ORIGINAL RELEASE FOR PROD.	1/10/66			Hde
	A	ON COL. "J" 2.165 WAS 1.955. HARDWARE NOTE CLARIFIED (-3-4-5)	2-16-66	15751	GDL	JL Hde
	B	(-3-4-5) COL "E" WAS .321 (-3-4-5) COL "F" WAS .201	4/15/66	11067	WHD	JL Hde
	C	"OR STAINLESS STEEL" ADDED TO BRASS INSERT	7.11.66	16523	WHD	JL Hde

- Notes
1. A Pair (2) of single sided Guide Assemblies are used to make a set. See application Note Illustration
 2. Single sided Guides shall be Purchased and Packaged by MFG. in sets.
 3. Double sided Guide Assy's are to be Purchased Individually.
 4. Stabilizing Non Twist Rods are to be inserted when Spacers are made up with more than One Spacer, to meet Specified Dimensions.



GUIDE HEIGHT: IN THE ILLUSTRATION BELOW, THE "H" DIMENSION OF THE CARD GUIDE CORRESPONDS TO CARD HEIGHT.
 GUIDE WIDTH: TO DETERMINE THE TOTAL WIDTH OF YOUR PACKAGE USE THIS FORMULA:
 $F_1 + F_2 + CMC = W + 0.437$
 IF THE CONNECTOR TAB IS OFF-SET ON THE CARD, THE F_1 AND F_2 DIMENSIONS SHOULD BE PROPORTIONED TO N_1 AND N_2 RESPECTIVELY.



Note: For location of Dimensions refer to Single Sided Guide Pictorial & Chart

REQ'D.	ITEM	PART NUMBER	DESCRIPTION	SYMBOL
EATON LIST OF MATERIAL				
MATERIAL		THE TECHNICAL MATERIEL CORP. MAMARONECK, NEW YORK		
FINISH		TITLE P.C. BIN GUIDE ASSY.		
UNLESS OTHERWISE SPECIFIED DIMENSIONS ARE IN INCHES AND INCLUDE CHEMICALLY APPLIED OR PLATED FINISHES		DRAWN G.D.L.	DATE 11-3-65	FINAL APPROVAL
DECIMALS .X ± .05 .XX ± .01 .XXX ± .005		CHECKED Hde	DATE 12-8-65	DATE 1/10/66
FRACTIONS ± 1/64 ANGLES ± 0° 30'		ELECT. DES. JC	DATE 1-10-66	TITLE TK122
TOLERANCES		MECH. DES. JC	DATE 1-10-66	REV. LTR. C
		SHEET 2	DATE 1/10-66	

Q'TY/UNIT	MODEL USED ON	ASSY. NO.
DO NOT SCALE	RTIH-1 CODE C	S401-412

THE CONTENTS OF THIS DRAWING ARE THE EXCLUSIVE PROPERTY OF THE TECHNICAL MATERIEL CORP. ITS UNAUTHORIZED USE OR REPRODUCTION IN WHOLE OR IN PART IS STRICTLY FORBIDDEN.

NOTES

STANDARD DRAWING

TK122 C