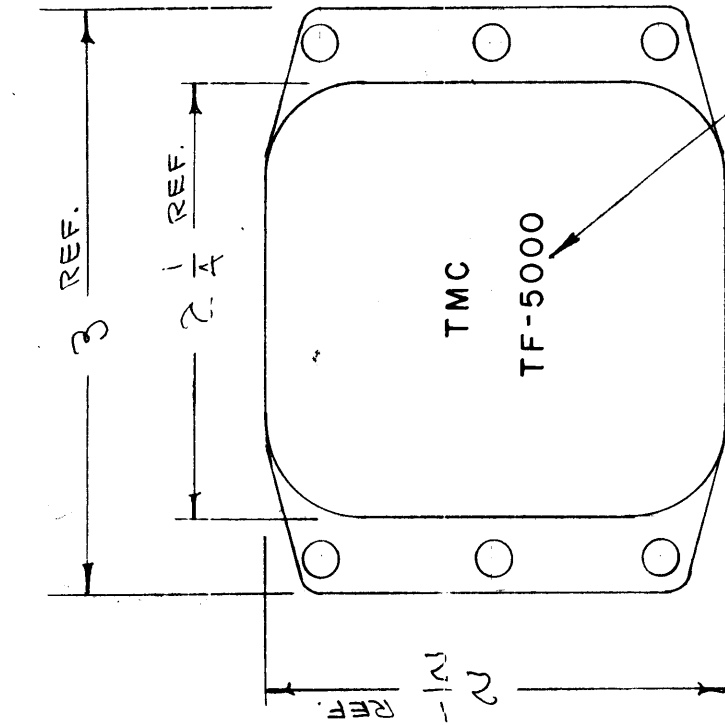
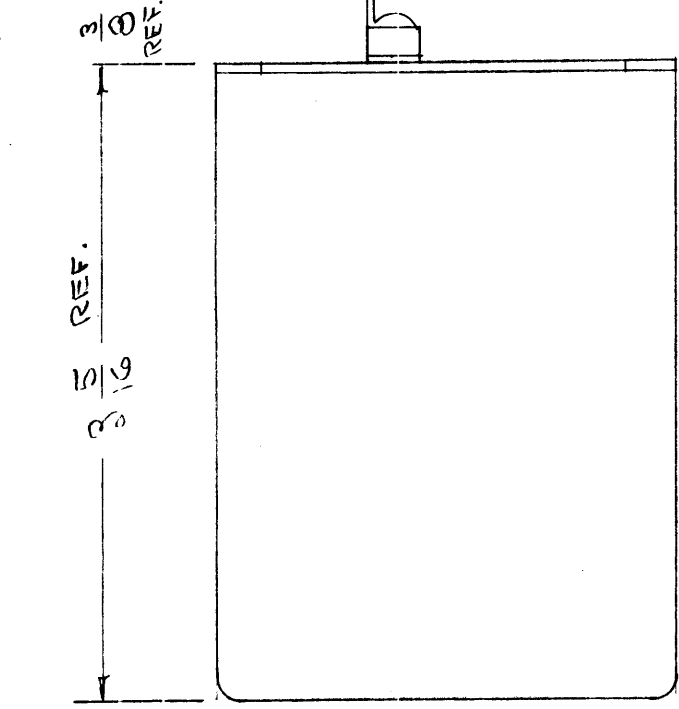


1/8" HIGH METAL STAMP AS SHOWN



STAMP AS SHOWN 1/8" HIGH BLACK GOTHIC

**MECHANICAL SPECIFICATIONS:**  
 CASE - STEEL, HERMETICALLY SEALED  
 COLOR - T. M. C. GRAY (S-115) EXCEPT TERMINAL END.  
 FILLER - COMPOUND

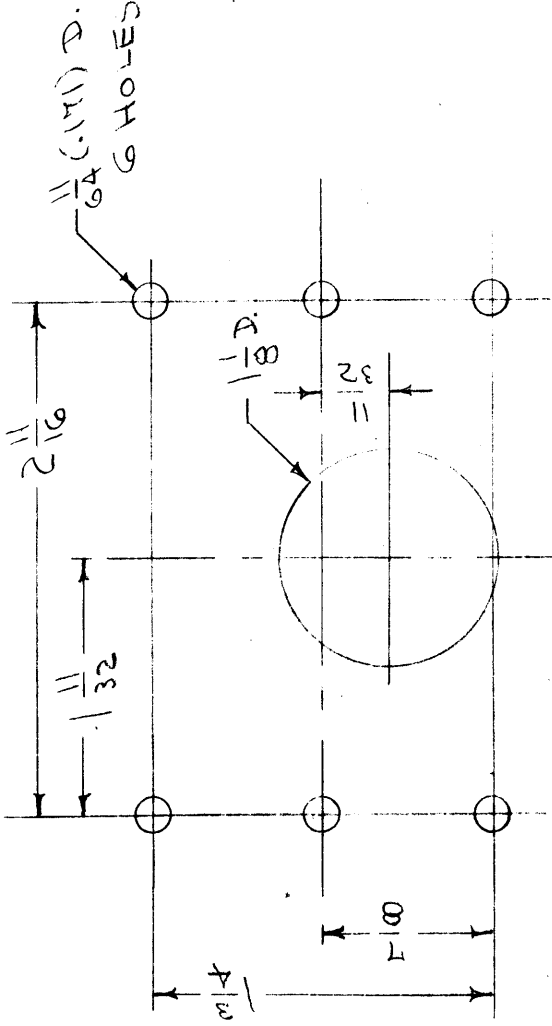
**ELECTRICAL SPECIFICATIONS:**  
 TERMINALS - SOLDER TYPE, INSULATED  
 INDUCTANCE - 15 HENRIES  
 MAX. CURRENT DC - 85 MA  
 DC RESISTANCE - 285 OHMS  
 INSULATION TEST VOLTS RMS - 2500

NOTICE TO PERSONS RECEIVING THIS DRAWING

THE TECHNICAL MATERIEL CORPORATION claims proprietary right in the material disclosed herein. This drawing is issued in confidence for engineering information only and may not be re-used or used to manufacture any electrical component without permission from The Technical Materiel Corporation to the user. This drawing is hereby granted assistance and is subject to recall at any time.

Property of:

THE TECHNICAL MATERIEL CORPORATION  
 MAMARONECK, NEW YORK



CHASSIS DRILLING PLAN

REQ. ITEM	PART NO.	DESCRIPTION	SYMBOL
B		1/8" BLACK GOTHIC STAMP	
A		1" REDRAWN	
ISSUE ITEM	CH. NO.	DATE	CH. NO.
CHANGED FROM		DATE	CH. NO.
TOLERANCES			
DEC. DIM. ±	MAXIMUM ALLOWABLE TOLERANCES HAVE BEEN DETERMINED AND ANY DEVIATIONS WILL BE CAUSE FOR REJECTION.		
FRAC. DIM. ±	REM VE ALL BURRS AND SHARP EDGES		
ANGULAR DIM. ±			
3-14-63 8537 RC		JK	AKT
11-19-56 1		GGD	AKT
SCALE:			
MAXIMUM ALLOWABLE TOLERANCES HAVE BEEN DETERMINED AND ANY DEVIATIONS WILL BE CAUSE FOR REJECTION.			
REM VE ALL BURRS AND SHARP EDGES			
REQ. PER UNIT	MODEL	PROJECT NO.	ASSY. NO.
1	CFA	136	B-A-52
1	RSP	137	B-A-51
1	BCU		B-A-52
1	BYM		B-A-52
1	FER	104	B-A-52
		A-121	B-A-52
			DATE
			USED ON
REQ. DES. APP.		ELEC. DES. APP.	
CHKD		MECH. DES. APP.	
GGD	11-19-56	DRAWN	
		CHECKED	
		FINAL APPROVAL	
			A.T.J.
THE TECHNICAL MATERIEL CORP.			
MAMARONECK, NEW YORK			
INDUCTOR			
STOCK SIZE			
MATERIAL			
TYPE & TEMPER			
HEAT TREAT. SPEC.			
FINISH & SPEC. NO.			
			TF-5000B

IF IT IS FOUND DESIRABLE TO CHANGE ANY TOLERANCE OR OTHER DETAIL SPECIFIED ON THIS DRAWING NOTIFY THE PURCHASER PROMPTLY.

MAXIMUM ALLOWABLE TOLERANCES HAVE BEEN DETERMINED AND DEVIATIONS WILL BE CAUSE FOR REJECTION. REMOVE ALL BURRS AND SHARP EDGES

RELEASED

TF-5003 B

NOTICE TO PERSONS RECEIVING THIS DRAWING

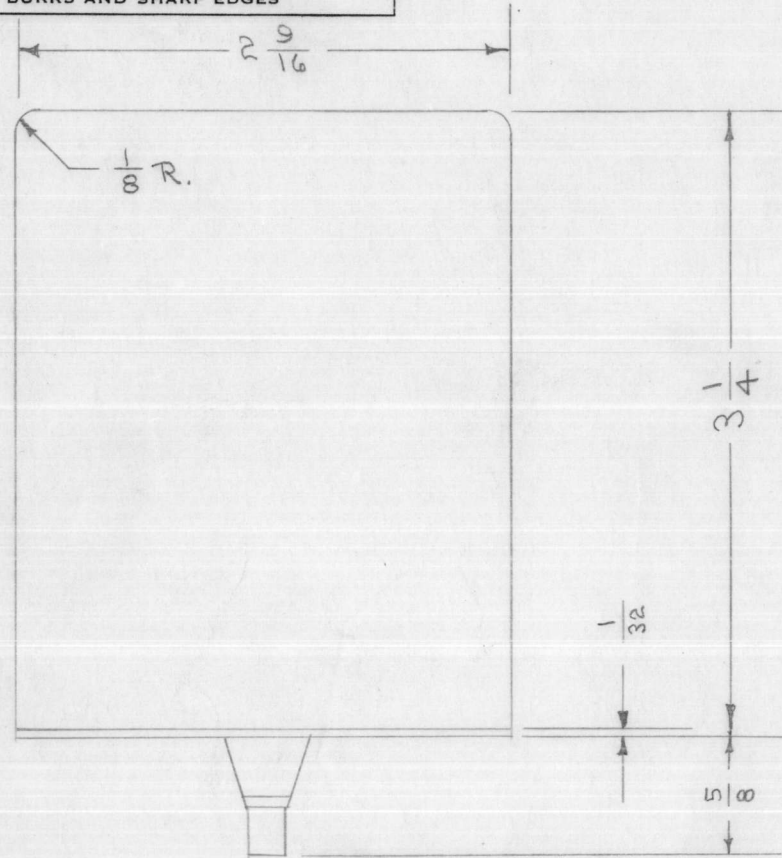
THE TECHNICAL MATERIEL CORPORATION claims proprietary right in the material disclosed hereon. This drawing is issued in confidence for engineering information only and may not be reproduced or used to manufacture anything shown hereon without permission from THE TECHNICAL MATERIEL CORPORATION to the user. This drawing is loaned for mutual assistance and is subject to recall at any time.

Property of:

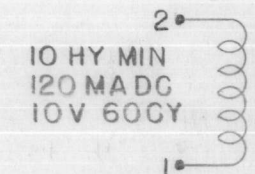
THE TECHNICAL MATERIEL CORPORATION  
MAMARONECK, NEW YORK

NOTES:

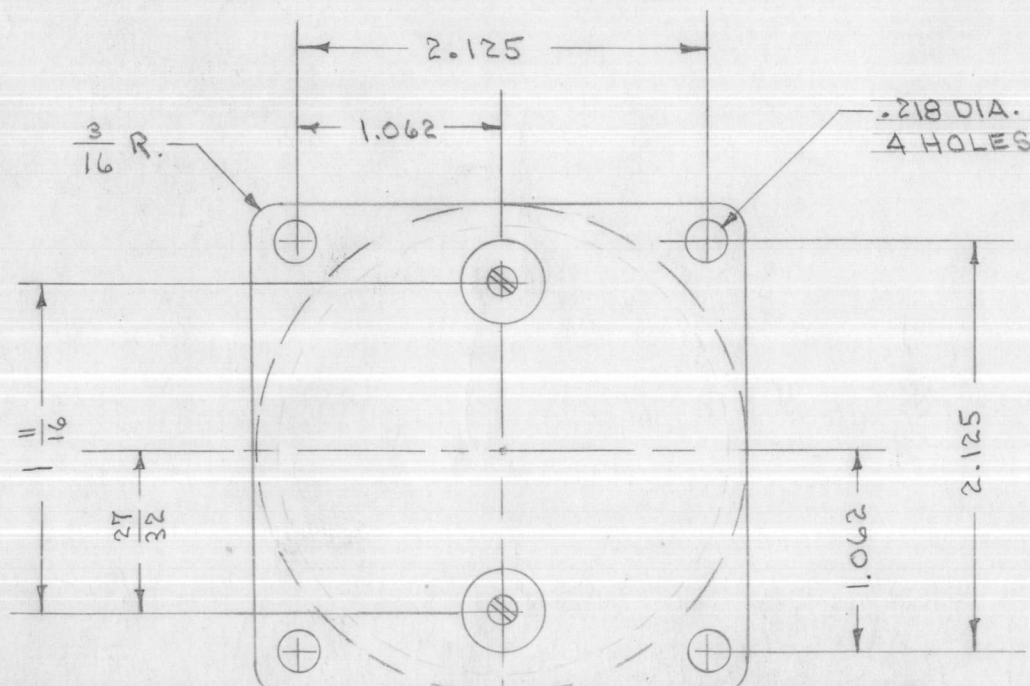
- 1- MANUFACTURED IN ACCORDANCE WITH MIL SPEC T-27-A EXCEPT THAT MIL SPEC T-27-A SHALL NOT APPEAR ON CASE AND QUALIFICATION TESTING IS NOT REQ.
- 2- FINISH SHALL BE S-116-SMOOTH BLACK ENAMEL.
- 3- SCHEMATIC DIAGRAM, TMC PART NO. (TF-5003), MANUFACTURERS NAME AND PART NO. SHALL APPEAR ON TRANSFORMER.



TMC  
TF-5003  
GRF CDDA FAM 04



DC RES 400 OHMS MAX  
TEST VOLTS 2000V RMS  
SCHEMATIC



ISSUE	ITEM	CHANGED FROM	DATE	CN. NO.	DRAFTS	CHECKER	ENG. APP.
B	1	NOTE ADDED (MIL-T-27-A)	6/30/60	2572	1	DRM	90/12
A	1	TMC Added	10/12/53	1	1	DRM	90/12

TOLERANCES		SCALE:
ALL OTHERS	DEC. DIM. ± .005 FRAC. DIM. ± 1/64 ANGULAR DIM. ±	A
DRILL, PUNCH, COMMERCIAL STOCK SIZES AND MANUFACTURERS TOLERANCES ARE NOT INCLUDED.		

MODEL	PROJECT NO.	ASS'Y. NO.	DATE

REQ.	ITEM	PART NO.	DESCRIPTION	SYMBOL
			THE TECHNICAL MATERIEL CORP. MAMARONECK, NEW YORK	
			REACTOR	
			C.D.D. 12-11-52 DRAWN	G.T.O ELEC. DES. APP.
			HEAT TREAT. SPEC.	MECH. DES. APP.
			FINISH & SPEC. NO.	
			SEE NOTE	
			SUPERCEDES B-383-M	TF-5003 B

IF IT IS FOUND DESIRABLE TO CHANGE ANY TOLERANCE OR OTHER DETAIL SPECIFIED ON THIS DRAWING NOTIFY THE PURCHASER PROMPTLY.

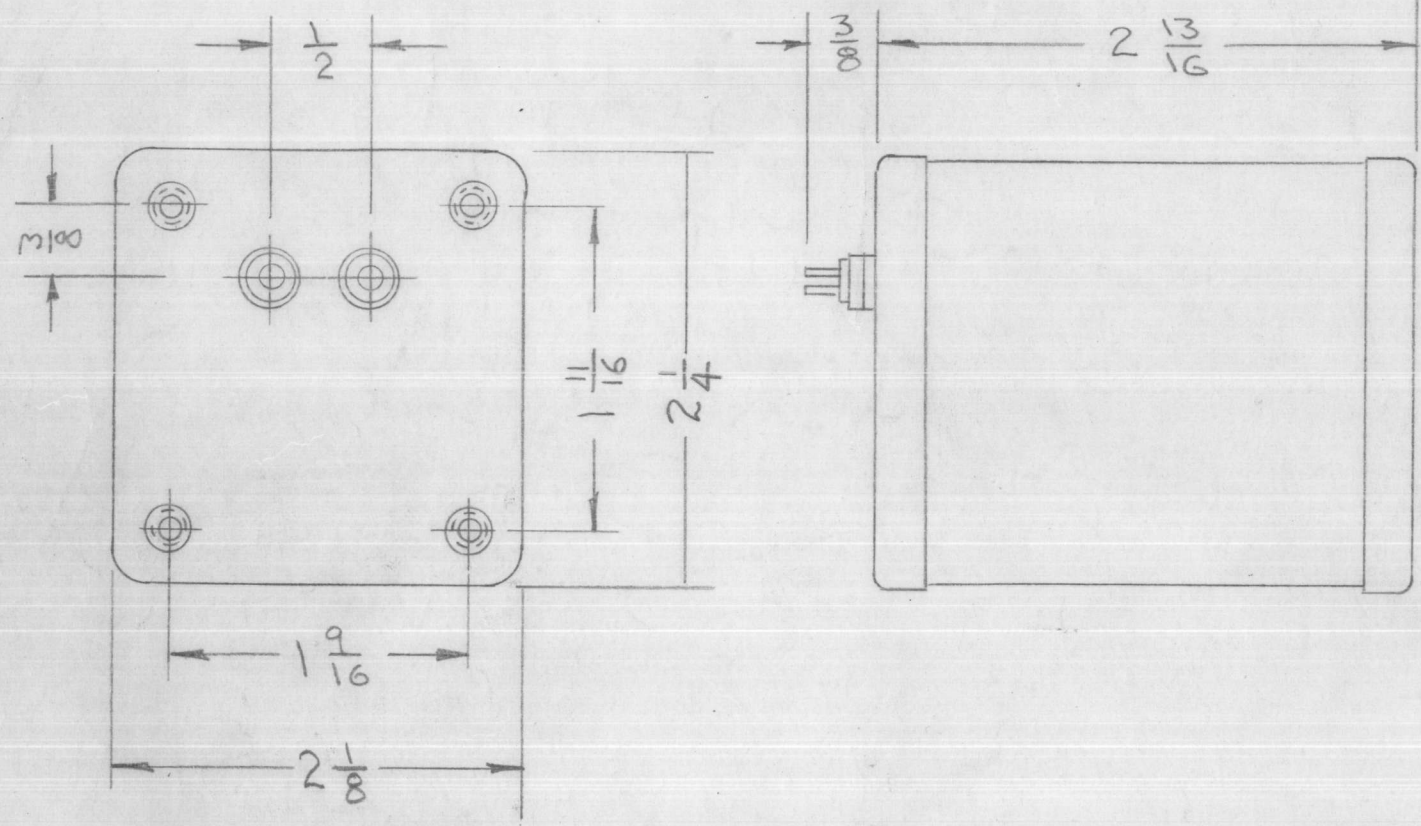
MAXIMUM ALLOWABLE TOLERANCES HAVE BEEN DETERMINED AND DEVIATIONS WILL BE CAUSE FOR REJECTION. REMOVE ALL BURRS AND SHARP EDGES

TF-5006 B

NOTICE TO PERSONS RECEIVING THIS DRAWING  
 THE TECHNICAL MATERIEL CORPORATION claims proprietary right in the material disclosed hereon. This drawing is issued in confidence for engineering information only and may not be reproduced or used to manufacture anything shown hereon without permission from THE TECHNICAL MATERIEL CORPORATION to the user. This drawing is loaned for mutual assistance and is subject to recall at any time.

Property of:  
 THE TECHNICAL MATERIEL CORPORATION  
 MAMARONECK, NEW YORK

REACTOR, FILTER CHOKE; 10 HY MIN., 70 MA; 280 OHMS MAX.  
 D C RESISTANCE; 1500 V RMS TEST HERMETICALLY SEALED  
 STEEL CASE; 4 MTG INSERTS THREADED FOR # 6-32 MTG SCREWS;  
 TWO SOLDER LUG TERMINALS ON BOTTOM;  
 TRANSFORMER TO CONFORM TO SPEC. MIL-T-27 GRADE 1, CLASS  
 A; TEST VOLTAGE 1000 VRMS NL. 6-32 STUDS 5/16" ± .010  
 MAY BE SUBSTITUTED FOR MTG. INSERTS.



NOTE: MANUFACTURED IN ACCORDANCE WITH MIL SPEC T-27-A EXCEPT THAT MIL SPEC T-27-A SHALL NOT APPEAR ON CASE AND QUALIFICATION TESTING IS NOT REQUIRED.

TMC  
 TF-5006

STAMP TOP AS SHOWN  
 LETTERING 1/8 HIGH

NOTICE TO PERSONS RECEIVING THIS DRAWING  
 THE TECHNICAL MATERIEL CORPORATION claims proprietary right in the material disclosed hereon. This drawing is issued in confidence for engineering information only and may not be reproduced or used to manufacture anything shown hereon without permission from THE TECHNICAL MATERIEL CORPORATION to the user. This drawing is loaned for mutual assistance and is subject to recall at any time.

Property of:  
 THE TECHNICAL MATERIEL CORPORATION  
 MAMARONECK, NEW YORK

							REQ.	ITEM	PART NO.	DESCRIPTION	SYMBOL
							STOCK SIZE		THE TECHNICAL MATERIEL CORP. MAMARONECK, NEW YORK		
							MATERIAL WEIGHT PER PC.		REACTOR, FILTER		
							TYPE & TEMPER		DRAWN: <i>AIDe</i>		
							HEAT TREAT. SPEC.		ELEC. DES. APP. <i>AIDe</i>		
							FINISH & SPEC. NO.		MECH. DES. APP. <i>[Signature]</i>		
							USED ON		CHECKED: <i>[Signature]</i>		
							MODEL		FINAL APPROVAL		
							PROJECT NO.		Supercedes MB981		
							ASS'Y. NO.		TF-5006		
							DATE		B		

ISSUE	ITEM	CHANGED FROM	DATE	CN. NO.	DRAFTS	CHECKER	ENG. APP.
B	1	NOTE ADDED (MIL T-27-A)	6-30-62	2572	1	<i>[Signature]</i>	<i>[Signature]</i>
A	1	TMC NO Added	10/12/53			<i>[Signature]</i>	<i>[Signature]</i>

TOLERANCES	SCALE:
DEC. DIM. ± FRAC. DIM. ± ANGULAR DIM. ±	A

TOLERANCES	SCALE:
DEC. DIM. ± FRAC. DIM. ± ANGULAR DIM. ±	A

DRILL, PUNCH, COMMERCIAL STOCK SIZES AND MANUFACTURERS TOLERANCES ARE NOT INCLUDED.

IF IT IS FOUND DESIRABLE TO CHANGE ANY TOLERANCE OR OTHER DETAIL SPECIFIED ON THIS DRAWING NOTIFY THE PURCHASER PROMPTLY.

MAXIMUM ALLOWABLE TOLERANCES HAVE BEEN DETERMINED AND DEVIATIONS WILL BE CAUSE FOR REJECTION. REMOVE ALL BURRS AND SHARP EDGES

TF-5007 A

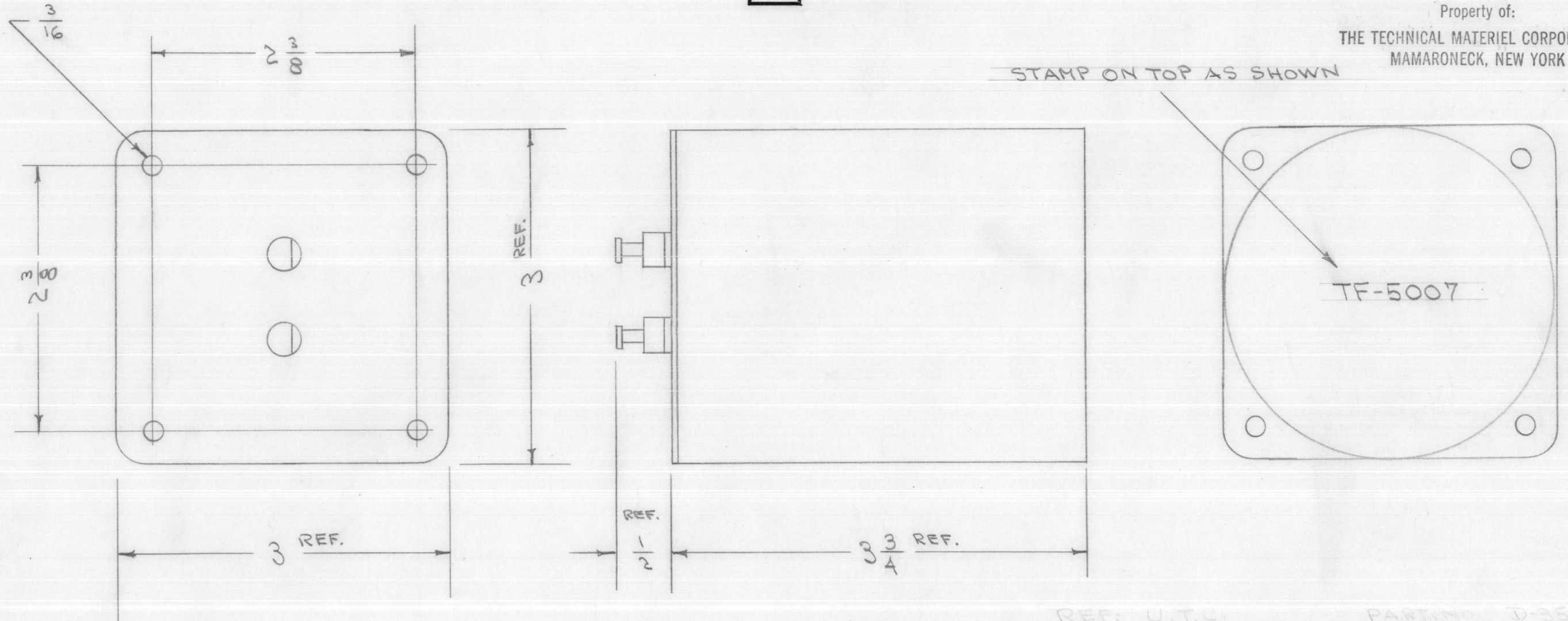
20 HYS AT 115 MA, D.C.  
 10V 60~  
 DCR 35AΩ  
 W.V. 535V PEAK

NOTICE TO PERSONS RECEIVING THIS DRAWING

THE TECHNICAL MATERIEL CORPORATION claims proprietary right in the material disclosed hereon. This drawing is issued in confidence for engineering information only and may not be reproduced or used to manufacture anything shown hereon without permission from THE TECHNICAL MATERIEL CORPORATION to the user. This drawing is loaned for mutual assistance and is subject to recall at any time.

Property of:  
 THE TECHNICAL MATERIEL CORPORATION  
 MAMARONECK, NEW YORK

STAMP ON TOP AS SHOWN



REF: U.T.C. PART NO. D-3550  
 HAMMARLUND " 31031-2  
 J.A.N. " TF 1A 04 YY

REQ.	ITEM	PART NO.	DESCRIPTION	SYMBOL
	#		THE TECHNICAL MATERIEL CORP.	
		STOCK SIZE	MAMARONECK. NEW YORK	
	#	#	REACTOR, FILTER	
		MATERIAL		
		WEIGHT PER PC.		
		TYPE & TEMPER	C.D.D. 2-2S-54	APP
		HEAT TREAT. SPEC.	APP	W.D.
		FINISH & SPEC. NO.		

ISSUE	ITEM	CHANGED FROM	DATE	CN. NO.	DRAFTS	CHECKER	ENG. APP.
A	1	DRAWING ADDED	7/25/53	1	C.D.D.	H.W.D.	APP

TOLERANCES: SCALE: 5401-12 (31031-2)

ALL OTHERS	DEC. DIM. ±	5401-29 (D3550)	DRILL, PUNCH, COMMERCIAL STOCK
	FRAC. DIM. ±	5401-12 (31)	SIZES AND MANUFACTURERS
	ANGULAR DIM. ±		TOLERANCES ARE NOT INCLUDED.

MODEL: DMK-4 PROJECT NO. 9-A-53 ASSY. NO. DATE USED ON

IF IT IS FOUND DESIRABLE TO CHANGE ANY TOLERANCE OR OTHER DETAIL SPECIFIED ON THIS DRAWING NOTIFY THE PURCHASER PROMPTLY.

MAXIMUM ALLOWABLE TOLERANCES HAVE BEEN DETERMINED AND DEVIATIONS WILL BE CAUSE FOR REJECTION. REMOVE ALL BURRS AND SHARP EDGES

TF-5008 A

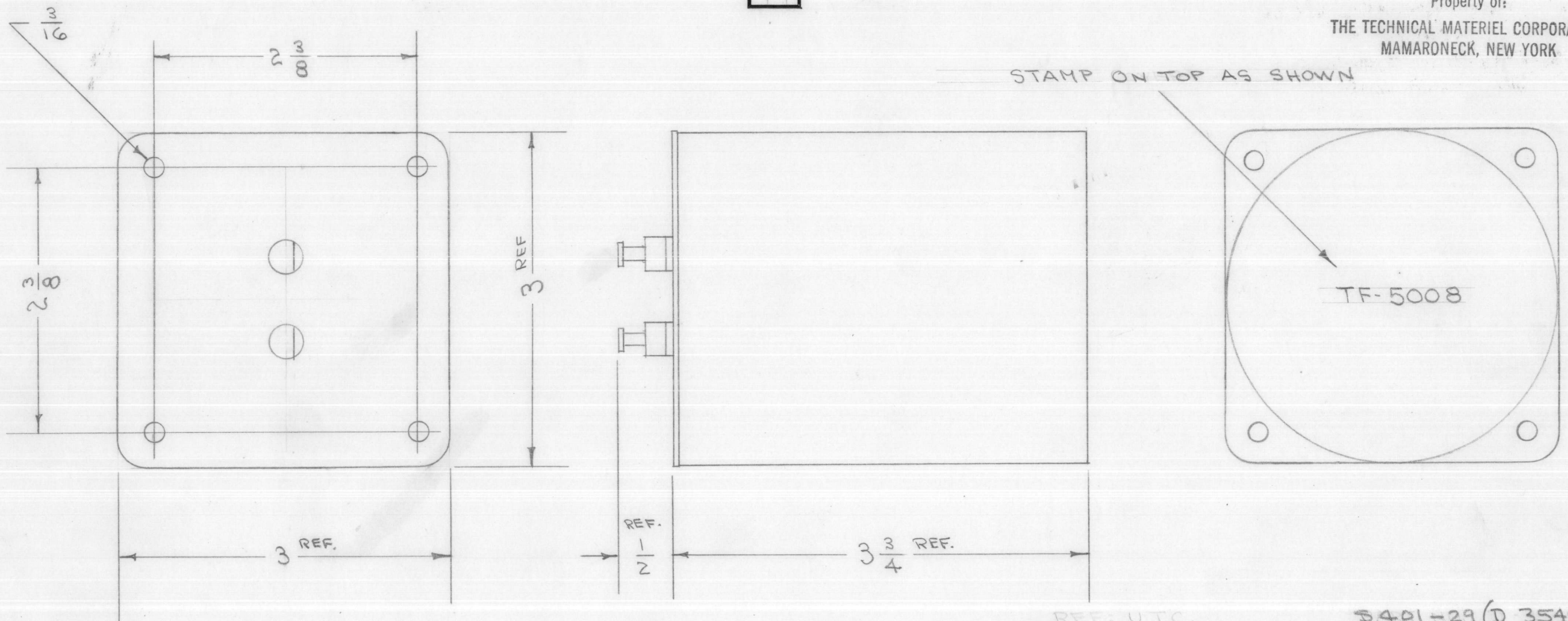
8.5 HYS AT 150 MA. D.C.  
 10 V 60~  
 DCR 150Ω  
 W.V. 535V. PEAK

NOTICE TO PERSONS RECEIVING THIS DRAWING

THE TECHNICAL MATERIEL CORPORATION claims proprietary right in the material disclosed hereon. This drawing is issued in confidence for engineering information only and may not be reproduced or used to manufacture anything shown hereon without permission from THE TECHNICAL MATERIEL CORPORATION to the user. This drawing is loaned for mutual assistance and is subject to recall at any time.

Property of:  
 THE TECHNICAL MATERIEL CORPORATION  
 MAMARONECK, NEW YORK

STAMP ON TOP AS SHOWN



REF: U.T.C.  
 HAMMARLUND  
 J.A.N.  
 5401-29 (D 3549)  
 5401-12 (31030-2)  
 " " TF 1A 04 YY.

REQ.	ITEM	PART NO.	DESCRIPTION	SYMBOL
	#		THE TECHNICAL MATERIEL CORP. MAMARONECK, NEW YORK	
	#		REACTOR, FILTER	
	#		C.D.D. 2-25-54	
	#		DRAWN	
	#		CHECKED	
	#		FINAL APPROVAL	
	#		TF-5008	A

A	1	DRAWING ADDED	2/25/54	1	C.D.D.	Handwritten initials	Handwritten initials
ISSUE	ITEM	CHANGED FROM	DATE	CN. NO.	DRAFTS	CHECKER	ENG. APP.
TOLERANCES		SCALE: 1:1 (3549)					
ALL OTHERS	DEC. DIM. ±	DRILL, PUNCH, COMMERCIAL STOCK SIZES AND MANUFACTURERS TOLERANCES ARE NOT INCLUDED.					
	FRAC. DIM. ±						
	ANGULAR DIM. ±						

REQ. PER. UNIT	DMK-4	PROJECT NO.	ASS'Y. NO.	DATE
				9-A-53
USED ON				

IF IT IS FOUND DESIRABLE TO CHANGE ANY TOLERANCE OR OTHER DETAIL SPECIFIED ON THIS DRAWING NOTIFY THE PURCHASER PROMPTLY.

MAXIMUM ALLOWABLE TOLERANCES HAVE BEEN DETERMINED AND DEVIATIONS WILL BE CAUSE FOR REJECTION. REMOVE ALL BURRS AND SHARP EDGES

TMC NO.	CAT. NO.	MEAN HYS.	DC MA
TF-5009-1	V1-C1	.0085	75
-2	V1-C2	.013	60
-3	V1-C3	.021	50
-4	V1-C4	.034	40
-5	V1-C5	.053	35
-6	V1-C6	.084	30
-7	V1-C7	.13	25
-8	V1-C8	.21	21
-9	V1-C9	.34	18
-10	V1-C10	.54	15
-11	V1-C11	.85	12
-12	V1-C12	1.3	10
-13	V1-C13	2.2	8
-14	V1-C14	3.4	7
-15	V1-C15	5.4	6
-16	V1-C16	8.5	5
-17	V1-C17	13.0	4
-18	V1-C18	21.0	3.5
-19	V1-C19	33.0	3
-20	V1-C20	52.0	2
-21	V1-C21	83.0	1.5
-22	V1-C22	130.0	1

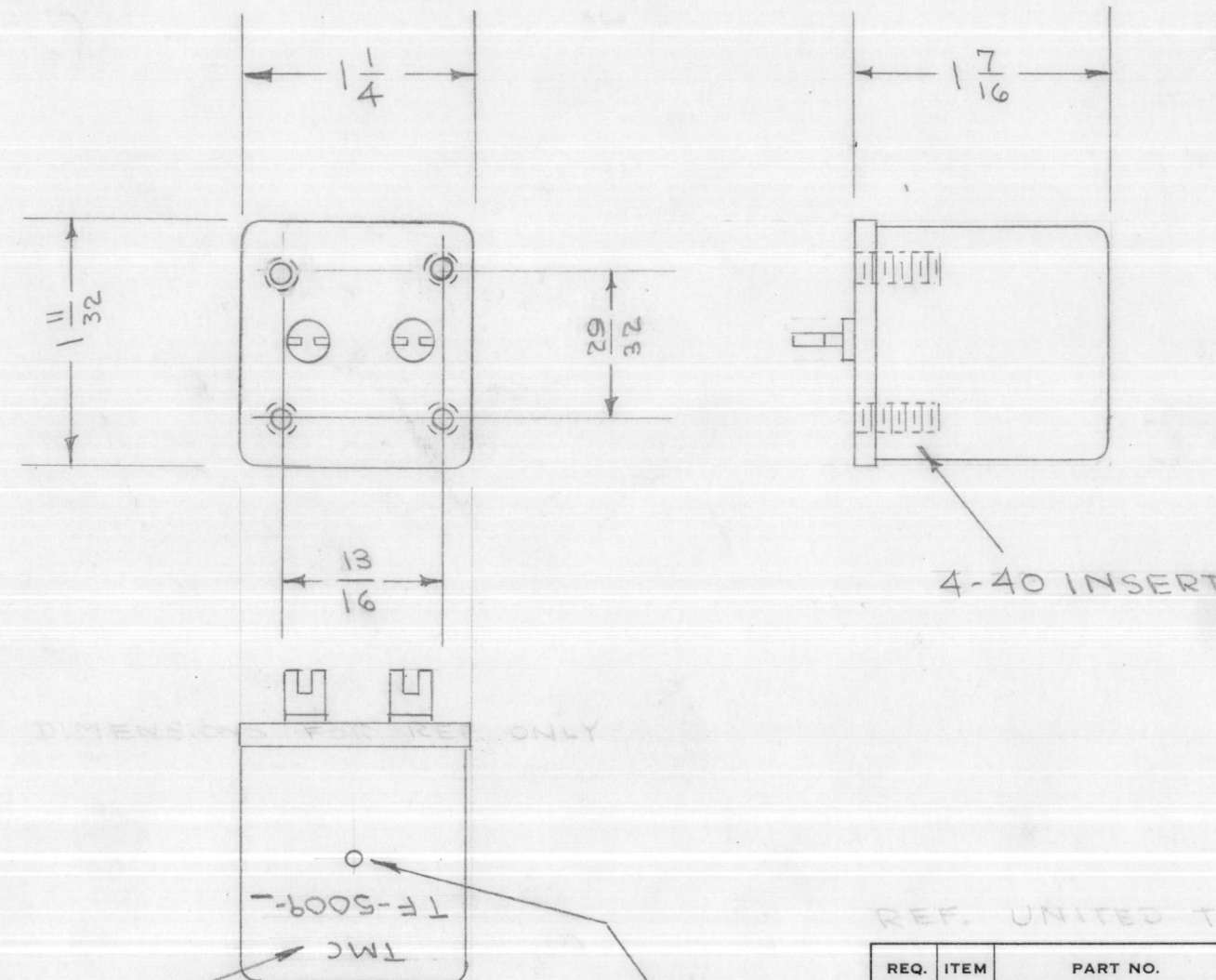
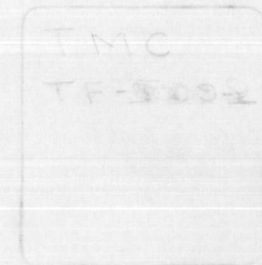
TF-5009

NOTICE TO PERSONS RECEIVING THIS DRAWING

THE TECHNICAL MATERIEL CORPORATION claims proprietary right in the material disclosed hereon. This drawing is issued in confidence for engineering information only and may not be reproduced or used to manufacture anything shown hereon without permission from THE TECHNICAL MATERIEL CORPORATION to the user. This drawing is loaned for mutual assistance and is subject to recall at any time.

Property of:  
THE TECHNICAL MATERIEL CORPORATION  
MAMARONECK, NEW YORK

STAMP TOP AS SHOWN



DIMENSIONS FINISH ONLY

INDUCTANCE VARIANCE FROM MEAN - +85% - -45%

STAMP AS SHOWN

ADJUSTMENT HOLE WITH SPACER (9L-105)

REF. UNITED TRANSFORMER CO.

REQ.	ITEM	PART NO.	DESCRIPTION	SYMBOL
	#		THE TECHNICAL MATERIEL CORP. MAMARONECK, NEW YORK	
	#	#	INDUCTOR, VARIABLE	
			C.D.D. 11/19/53	ARB
			DRAWN	ELEC. DES. APP. MECH. DES. APP.
			CHECKED	FINAL APPROVAL
				TF-5009

ISSUE	ITEM	CHANGED FROM	DATE	CN. NO.	DRAFTS	CHECKER	ENG. APP.
TOLERANCES		SCALE: 5/16-30					
ALL OTHERS	DEC. DIM. ± FRAC. DIM. ± ANGULAR DIM. ±	DRILL, PUNCH, COMMERCIAL STOCK SIZES AND MANUFACTURERS TOLERANCES ARE NOT INCLUDED.					

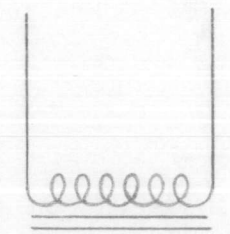
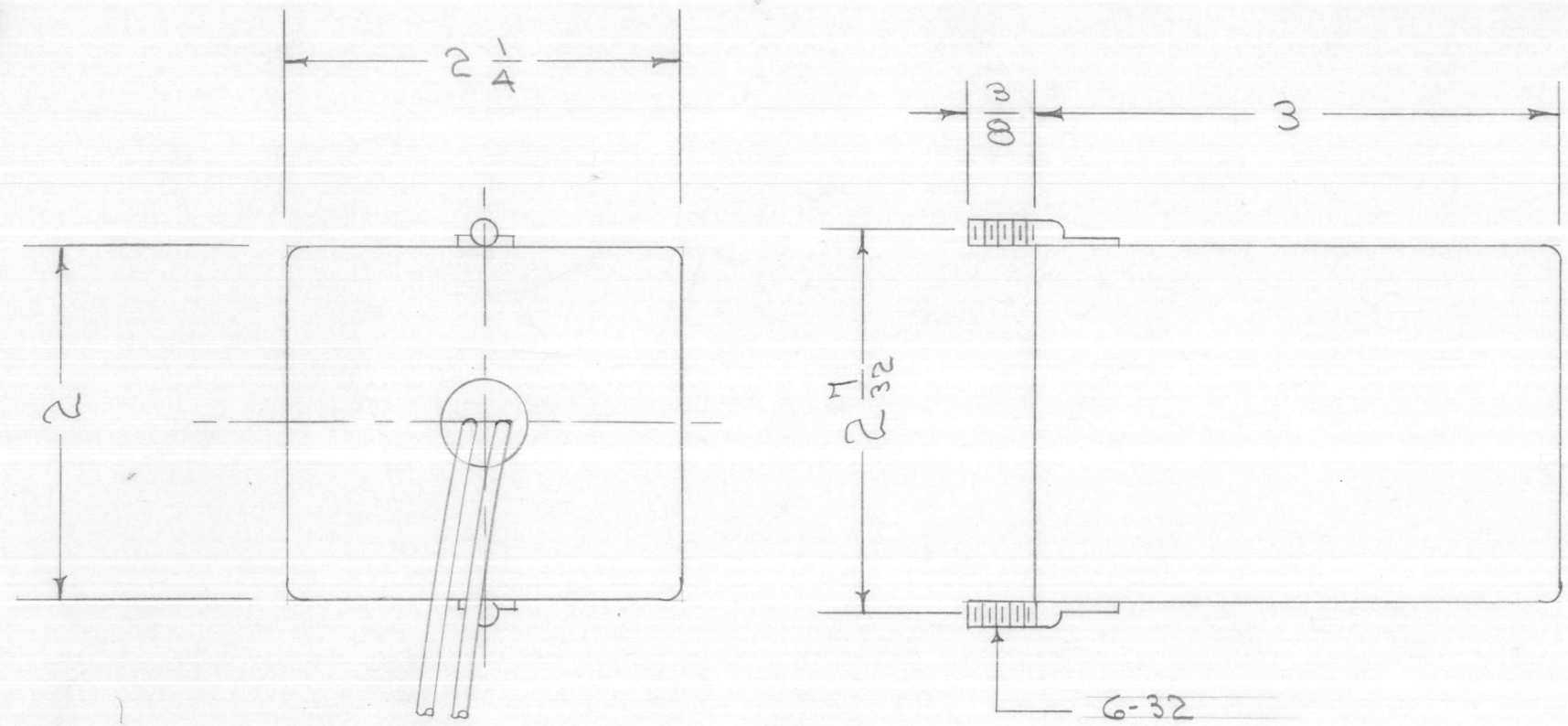
UNIT	MODEL	PROJECT NO.	ASS'Y. NO.	DATE
1	RSC-1	1175		11-19-53

TF-5010 Ø

NOTICE TO PERSONS RECEIVING THIS DRAWING

THE TECHNICAL MATERIEL CORPORATION claims proprietary right in the material disclosed herein. This drawing is issued in confidence for engineering information only and may not be re-produced or used to manufacture anything shown hereon without permission from THE TECHNICAL MATERIEL CORPORATION to the user. This drawing is loaned for mutual assistance and is subject to recall at any time.

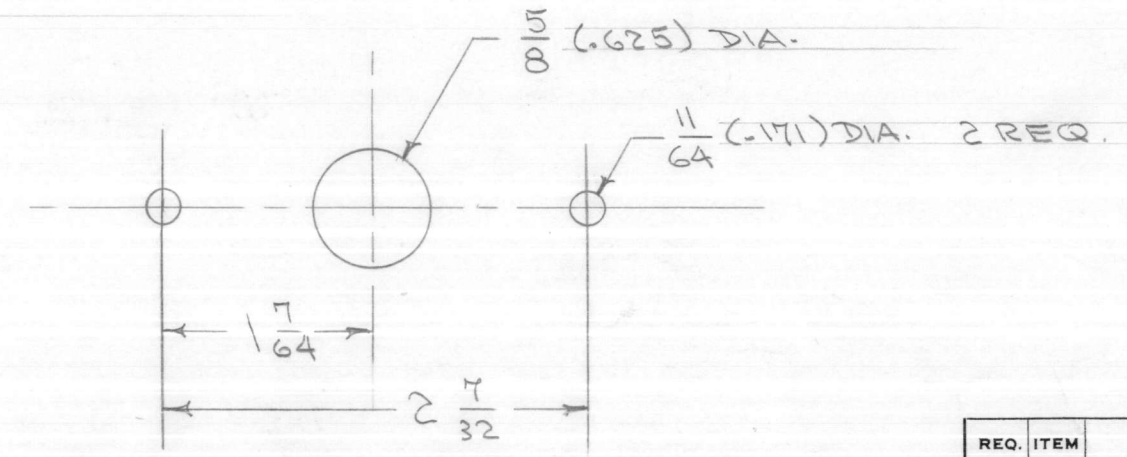
Property of:  
THE TECHNICAL MATERIEL CORPORATION  
MAMARONECK, NEW YORK



5.4 to 6.4 HYS.

D.C. RESISTANCE 300 Ω  
CURRENT CAPACITY 60 ma.  
INSULATION TEST 2500 volts

2 COVERED LEADS  
5" LONG EACH.



CHASSIS DRILLING PLAN

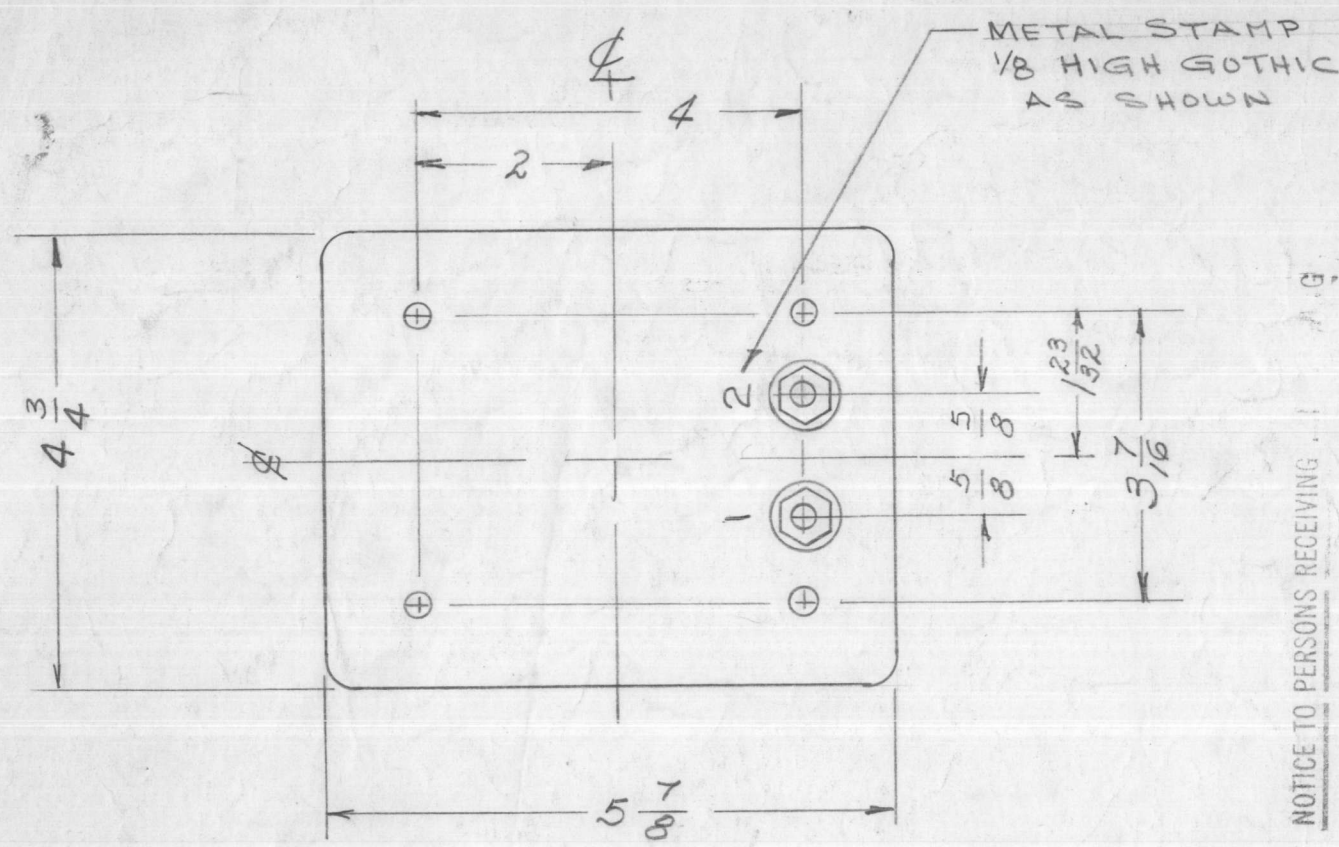
Ø	ORIGINAL RELEASE	8/14/69	W			
ISSUE	ITEM	CHANGED FROM	DATE	CH. NO.	DRAFTS	CHECKER
TOLERANCES		SCALE:				
DEC. DIM. ±	MAXIMUM ALLOWABLE TOLERANCES HAVE BEEN DETERMINED AND ANY DEVIATIONS WILL BE CAUSE FOR REJECTION.					
FRAC. DIM. ±	REMOVE ALL BURRS AND SHARP EDGES					
ANGULAR DIM. ±	A					

REQ. PER UNIT	MODEL	PROJECT NO.	ASS'Y. NO.	DATE
1	238	435		8/14/69
USED ON				

REQ. ITEM	PART NO.	DESCRIPTION	SYMBOL
		THE TECHNICAL MATERIEL CORP. MAMARONECK, NEW YORK	
STOCK SIZE		FILTER CHOKE	
MATERIAL		GSB	
TYPE & TEMPER		CD 5/16/76	
HEAT TREAT. SPEC.		8/14/69	
DRAWN		SPM	
CHECKED			
FINAL APPROVAL			
FINISH & SPEC. NO.			
ELEC. DES. APP.			
MECH. DES. APP.			

TF-5010 Ø

TF-5012 G



**ELECTRICAL SPECIFICATIONS:**  
 INDUCTANCE - 8 HY @ 750 MA, 15 HY @ 100 MA  
 D.C. RESISTANCE - APPROX. 42 Ω  
 INSULATION BREAKDOWN TEST VOLTAGE 10,000 VOLTS

**NOTICE TO PERSONS RECEIVING:**  
 THE TECHNICAL MATERIEL CORP. PROPRIETARY RIGHT IN THE MATERIAL DISCLOSED. THIS DRAWING IS ISSUED IN CONFIDENCE AND INFORMATION ONLY AND MAY NOT BE REPRODUCED OR MANUFACTURED WITHOUT THE WRITTEN PERMISSION FROM THE TECHNICAL MATERIEL CORPORATION TO THE USER. THIS DRAWING IS LOANED FOR ASSISTANCE AND IS SUBJECT TO RECALL AT ANY TIME.

Property of:  
 THE TECHNICAL MATERIEL CORPORATION  
 MAMARONECK, NEW YORK

THE TECHNICAL MATERIEL CORP.  
 MAMARONECK NEW YORK

TF-5012

8-15 HY 750 MA

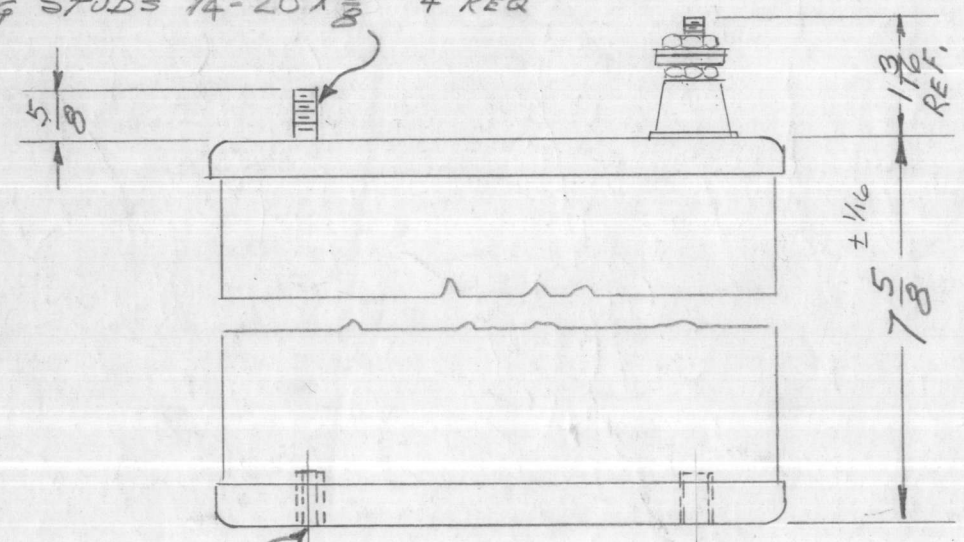
MIL-STD-202  
 GR. 1 CLASS B, C, D

MARK TMC PT. NO. W/LATEST REVISION LETTER.

**NOTE**  
 SCHEMATIC DIAGRAM TO APPEAR ON END OPPOSITE TERMINAL END  
 COLOR - BLACK

\*LATEST REV. LETTER

MOUNTING STUDS 1/4-20 X 5/8 4 REQ

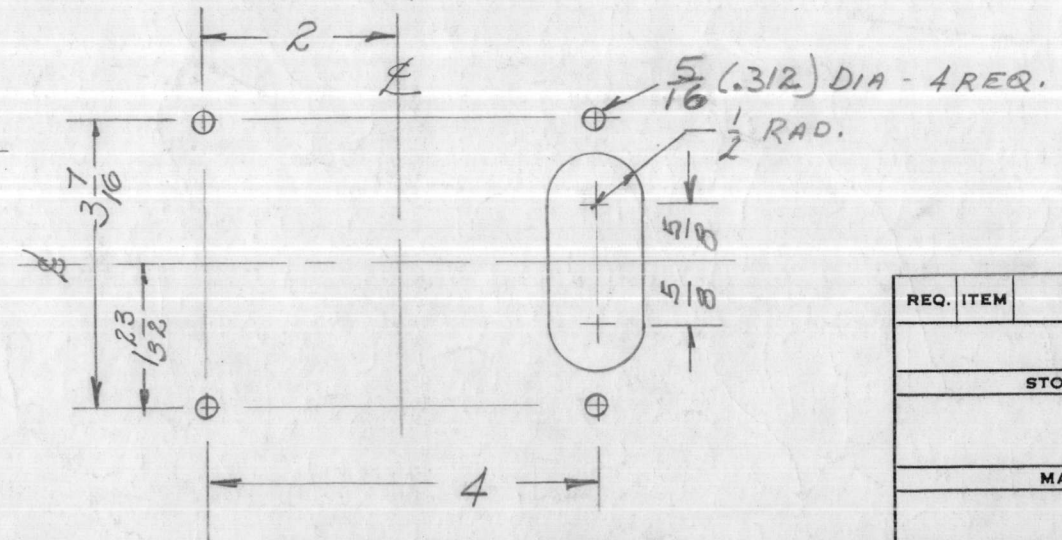


**MECHANICAL SPECIFICATIONS:**  
 CASE - HERMETICALLY SEALED RECTANGULAR STEEL CASE  
 FINISH - S-115 TMC SMOOTH GRAY ENAMEL; EXCEPT TERMINAL END.  
 SIZE - 5 1/4 X 5 7/8 X 7 5/8 HIGH; EXCLUSIVE OF TERMINALS  
 POTTING COMPOUND - SAND & WAX

**NOTE:** MANUFACTURED IN ACCORDANCE WITH MIL SPEC T-27-A EXCEPT THAT MIL SPEC T-27-A SHALL NOT APPEAR ON CASE AND QUALIFICATION TESTING IS NOT REQUIRED.

INSERTS 1/4-20 X 1/2 DEEP 4 REQ  
 (SEE DRILLING PLAN FOR INSERT LAYOUT)

**DRILLING PLAN**



ISSUE	ITEM	CHANGED FROM	DATE	CH. NO.	DRAFTS	CHECKER	ENG. APP.
D		TERMINAL HEIGHT WAS 1	8-10-65	8931			
G		ADD TMC PT. NO. REV. NOTE	11/10/66	CC	RME	[Signature]	[Signature]
F	1	POTTING COMPOUND ADD. TO SPECS.	4-15-65	13889	JR	[Signature]	[Signature]
E	1	SEE EMN #10903	2/14/64	10903	A.M.	TR	[Signature]

**TOLERANCES**  
 DEC. DIM. ±  
 FRAC. DIM. ± 1/64  
 ANGULAR DIM. ±

**SCALE:** 2-1247

MAXIMUM ALLOWABLE TOLERANCES HAVE BEEN DETERMINED AND ANY DEVIATIONS WILL BE CAUSE FOR REJECTION. REMOVE ALL BURRS AND SHARP EDGES

REQ. PER UNIT	MODEL	PROJECT NO.	ASS'Y. NO.	DATE
1	RTP-2			

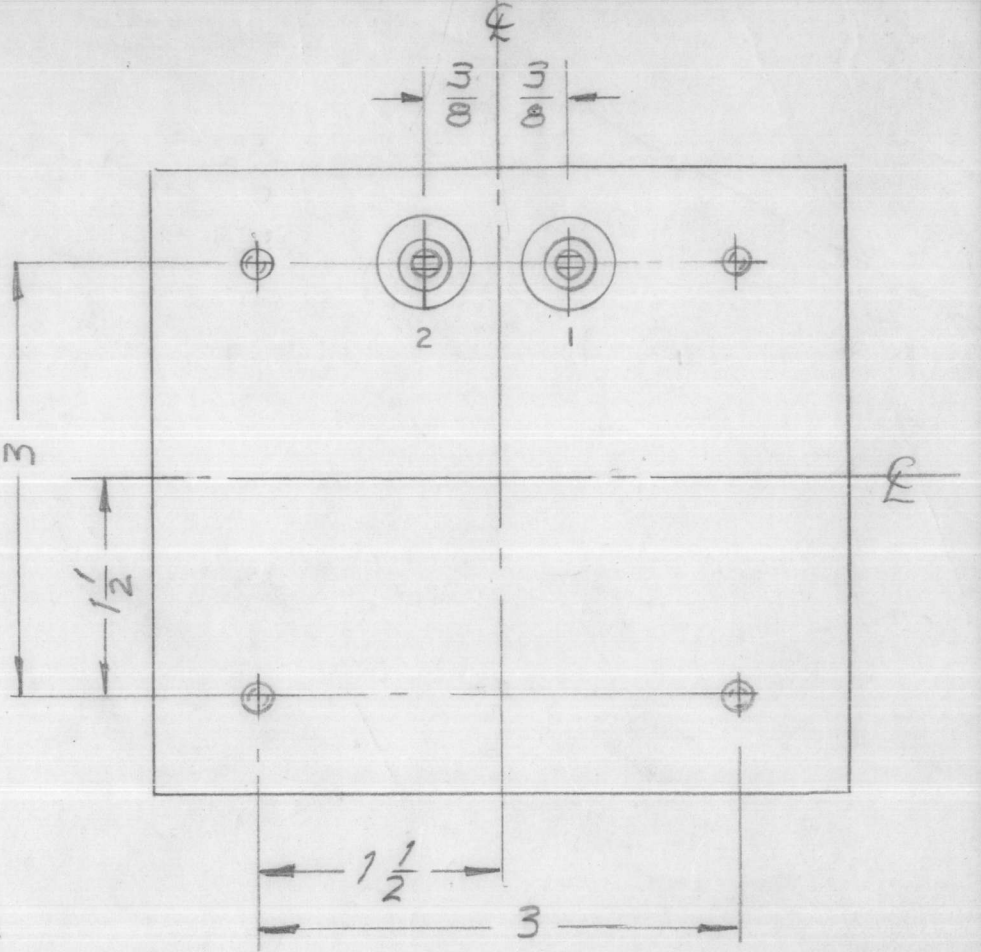
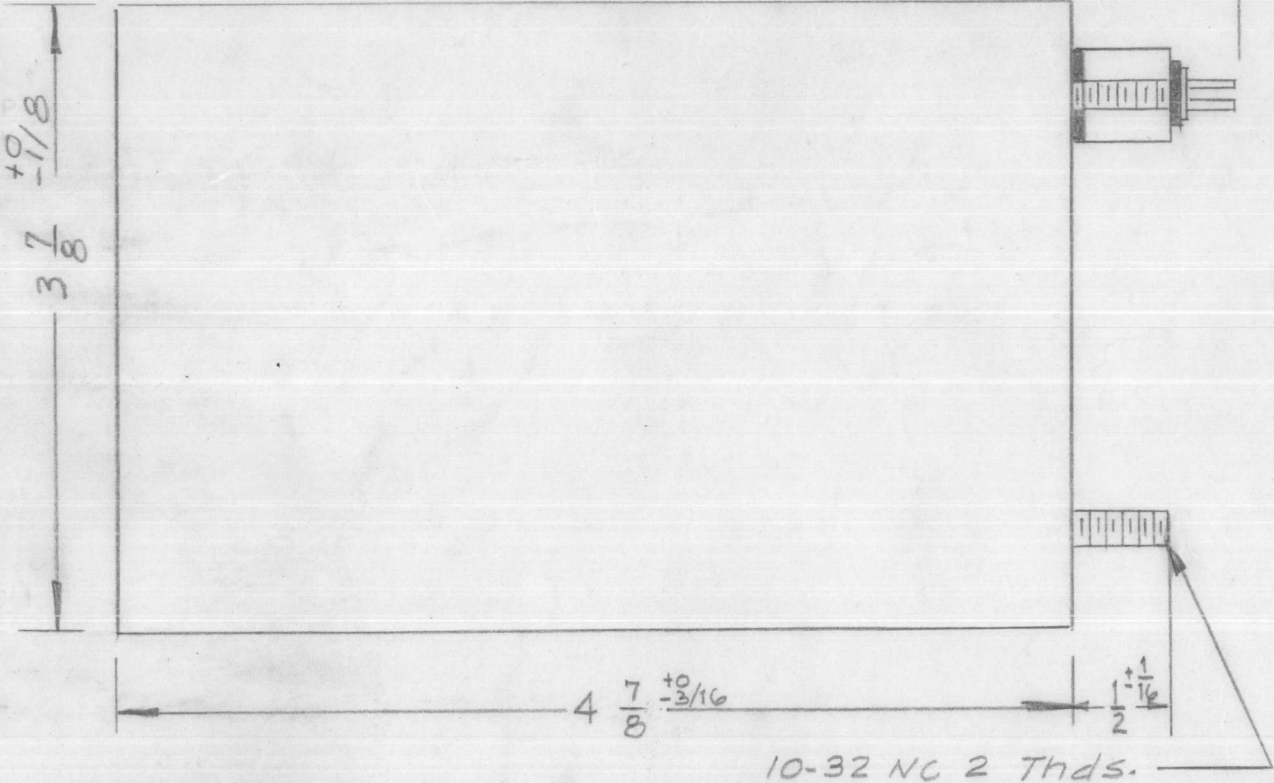
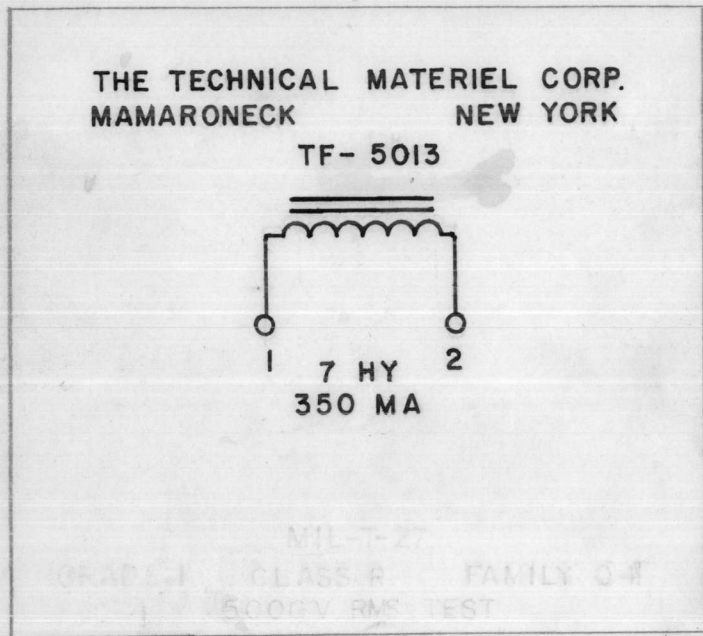
USED ON

REQ. ITEM	PART NO.	DESCRIPTION	SYMBOL
		THE TECHNICAL MATERIEL CORP. MAMARONECK, NEW YORK	
	STOCK SIZE	REACTOR, FILTER	
	MATERIAL	SWINGING	
	TYPE & TEMPER	HEAT TREAT. SPEC.	DRAWN
			CHECKED
	FINISH & SPEC. NO.	ELEC. DES. APP.	MECH. DES. APP.

TF-5012 G



TF-5013 B



**ELECTRICAL SPECIFICATIONS:**

INDUCTANCE 7 Henries at full current rating.  
DC CURRENT RATING 350 MA  
DC RESISTANCE Approx. 55 ohms.  
INSULATION Winding to be insulated for 2000 V.

**MECHANICAL SPECIFICATIONS:**

CASE Rectangular, steel MIL Type YY, Hermetically sealed.  
FINISH TMC Smooth Grey Enamel (S-115), except terminal end.  
SIZE 3-7/8 X 3-7/8 X 4-7/8, High, excluding studs and terminals.  
STAMPING Terminals shall be metal stamped 1 and 2 as shown. Opposite end shall be rubber stamped in black as shown.

NOTE: MANUFACTURED IN ACCORDANCE WITH MIL SPEC T-27-A EXCEPT THAT MIL SPEC T-27-A SHALL NOT APPEAR ON CASE AND QUALIFICATION TESTING IS NOT REQUIRED.

ISSUE	ITEM	CHANGED FROM	DATE	CH. NO.	DRAFTS	CHECKER	ENG. APP.
B	1	NOTE ADDED (MIL T-27-A)	6-30-60	2572			
A	1	2000V WAS 5000V	4-20-60	2161		JCB	

TOLERANCES

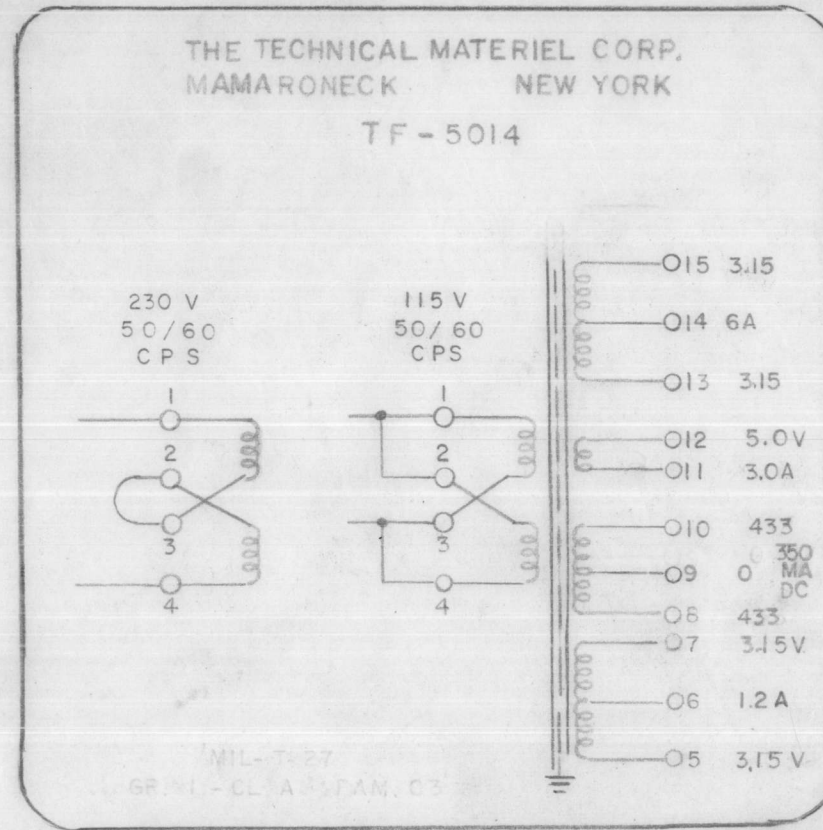
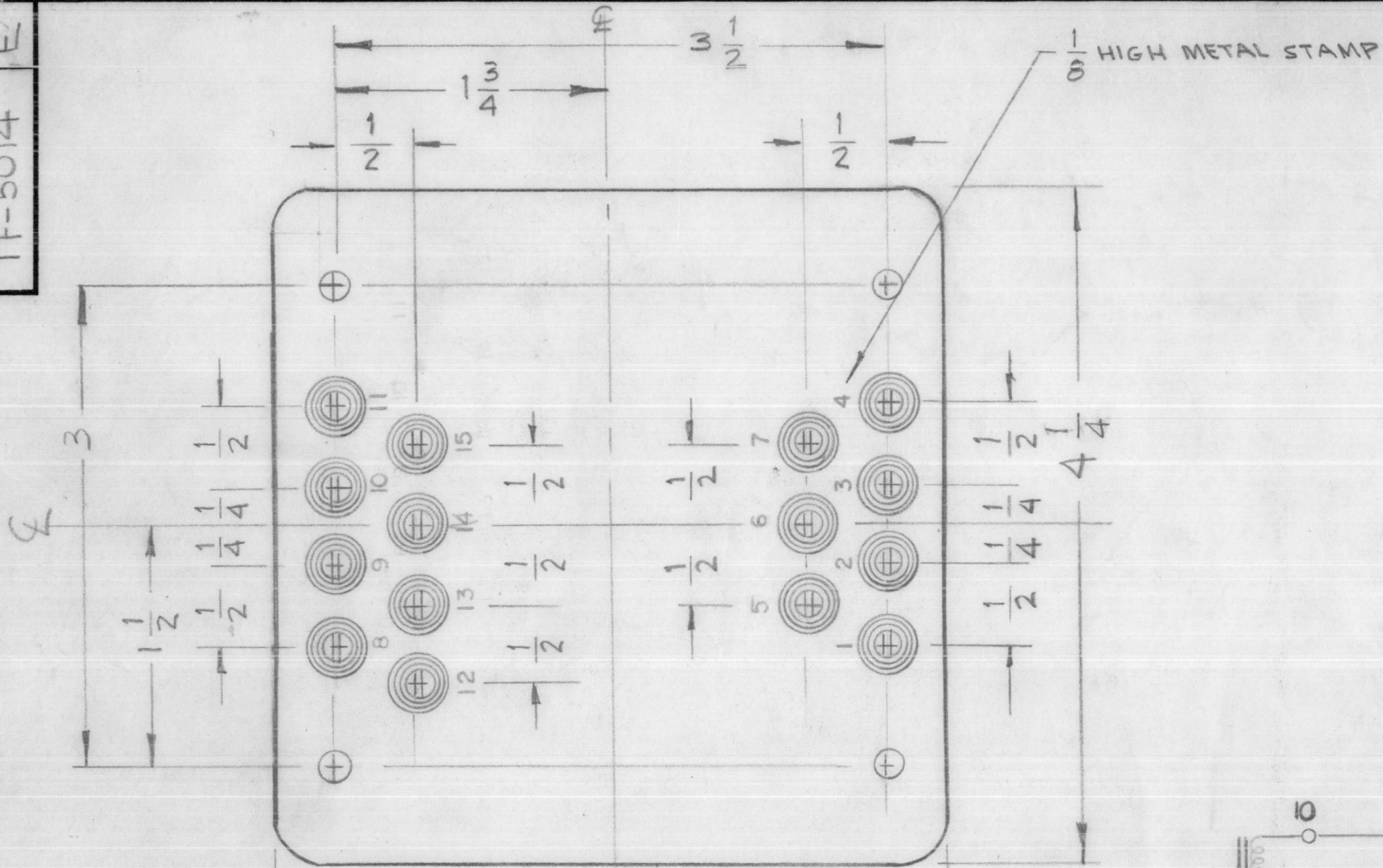
DIM. ±	A	MAXIMUM ALLOWABLE TOLERANCES HAVE BEEN DETERMINED AND ANY DEVIATIONS WILL BE CAUSE FOR REJECTION: REMOVE ALL BURRS AND SHARP EDGES
2. DIM. ±		
3. DIM. ±		

1	CPP-2	E-1047-1	9-9-59
REQ. PER UNIT	MODEL	PROJECT NO.	ASSY. NO.
USED ON			

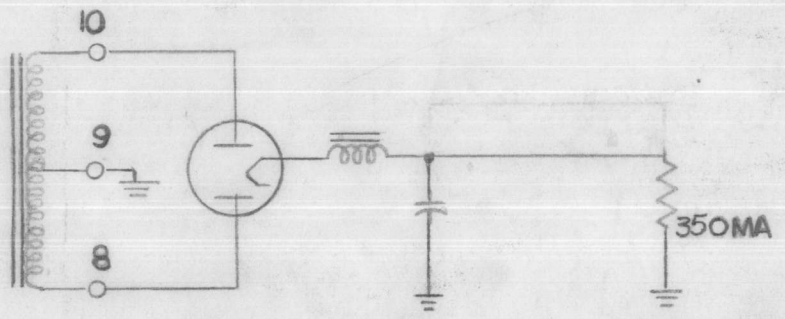
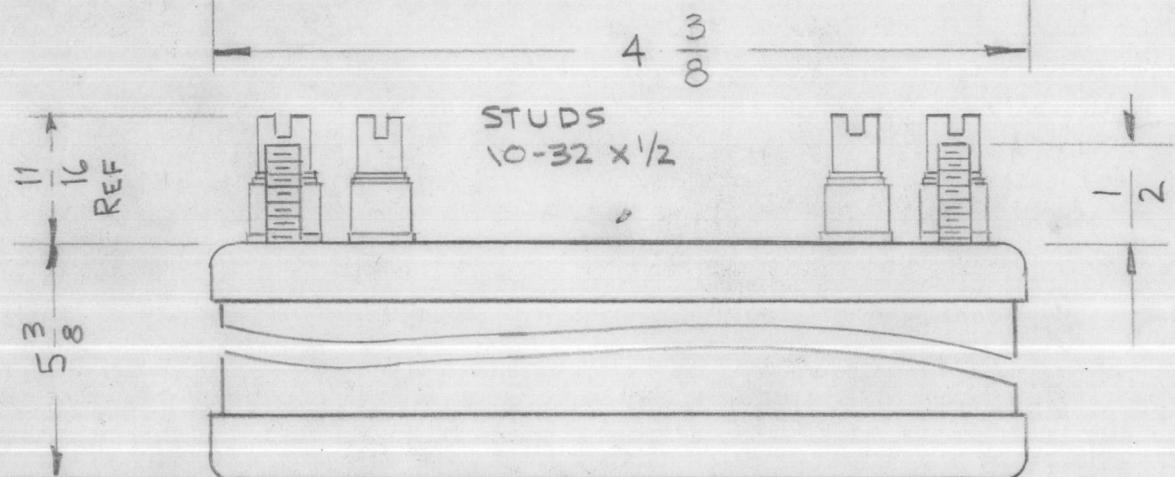
REF: Birmingham Transformer Co., NO. 3061

REQ.	ITEM	PART NO.	DESCRIPTION	SYMBOL
			THE TECHNICAL MATERIEL CORP. MAMARONECK, NEW YORK	
			REACTOR, 7 HENRY, 350 MA	
			MATERIAL	
			TYPE & TEMPER	
			HEAT TREAT. SPEC.	
			FINISH & SPEC. NO.	
			DRAWN	
			CHECKED	
			FINAL APPROVAL	
			TF-5013	B

TF-5014



SCHEMATIC DIAGRAM TO APPEAR ON END OPPOSITE TERMINALS



**ELECTRICAL SPECIFICATIONS-**  
 TRANSFORMER TO BE USED IN CIRCUIT AS SHOWN.  
**PRIMARY -** WHEN PARALLEL CONNECTED 115 V. AC AT 50/60 CPS. SINGLE PHASE  
 WHEN SERIES CONNECTED 230 V. AC AT 50/60 CPS. SINGLE PHASE  
**SECONDARY -** FOUR WINDINGS AS FOLLOWS:  
 1- VOLTAGE TO BE SUCH AS TO OBTAIN 380 V. DC AT 350 MA.  
 2- 5.0 VAC AT 3.0 AMPS.  
 3- 6.3 VAC AT 1.2 AMPS CENTER TAPPED  
 4- 6.3 VAC AT 6.0 AMPS CENTER TAPPED  
 5. ELECTROSTATIC SHIELD SHALL BE INSERTED. (FOIL)

**MECHANICAL SPECIFICATIONS-**  
 CASE - HERMETICALLY SEALED IN RECTANGULAR STEEL CASE  
 FINISH - S-115 TMC SMOOTH GRAY ENAMEL EXCEPT STUD END.  
 SIZE - 4 1/4 X 4 7/8 X 5 3/8 HIGH, EXCLUSIVE OF TERM.

E		ON NOTE 1 380V ADD.	8-16-61	14600			
D	1	4 3/8 DIM WAS 4 1/4, 4 1/4 WAS 4 3/8	2-28-61	4293	JCB		
C	2	DIM 4 3/8 WAS 4 1/4	2/14/61	4158	JCB		
C	1	DIM 4 1/4 WAS 4 3/8					
B	1	NOTE ADDED (MIL-T-27A)	6-30-60	2572	JCB		
A	1	2000V WAS 3000V	4-20-60	2161	JCB		
ISSUE	ITEM	CHANGED FROM	DATE	CH. NO.	DRAFTS	CHECKER	ENG. APP.

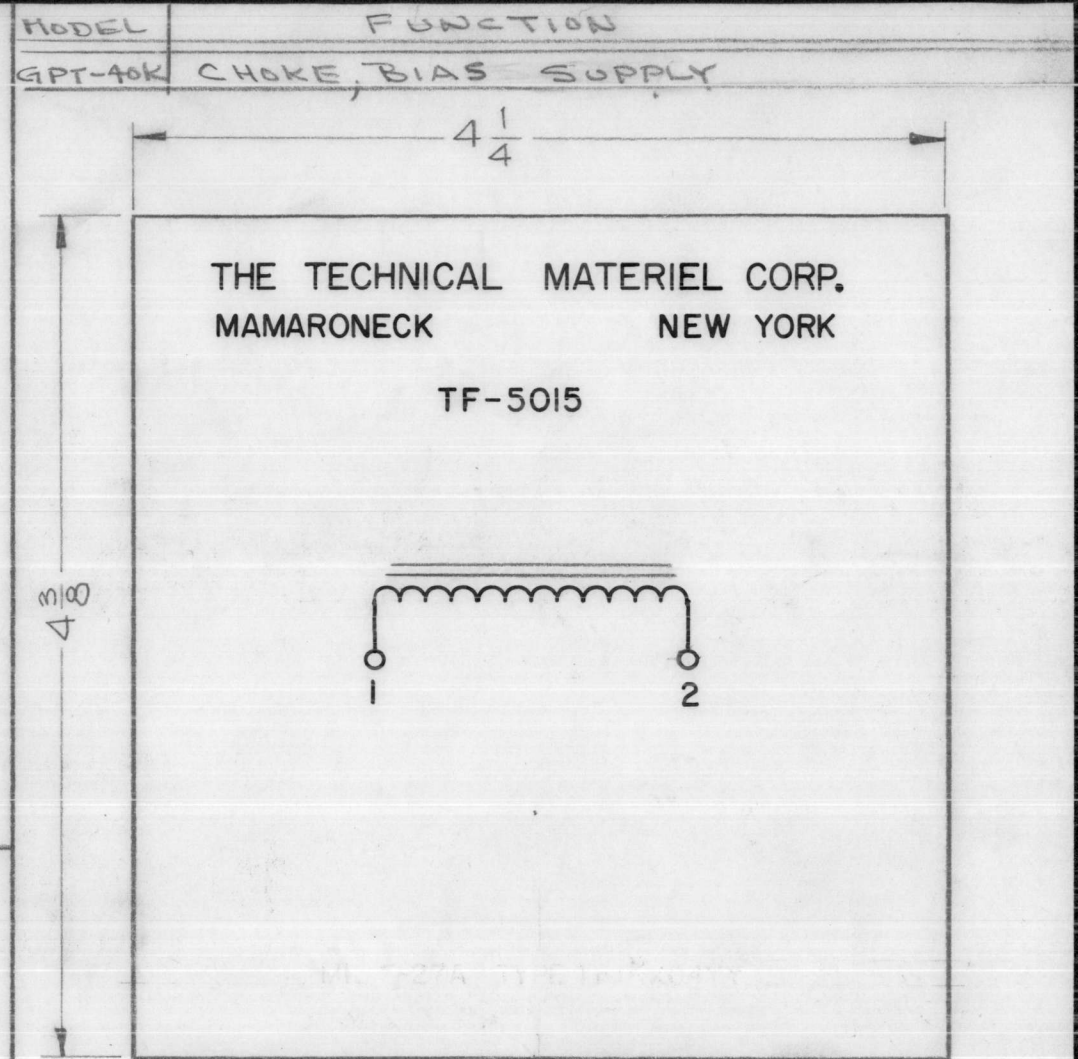
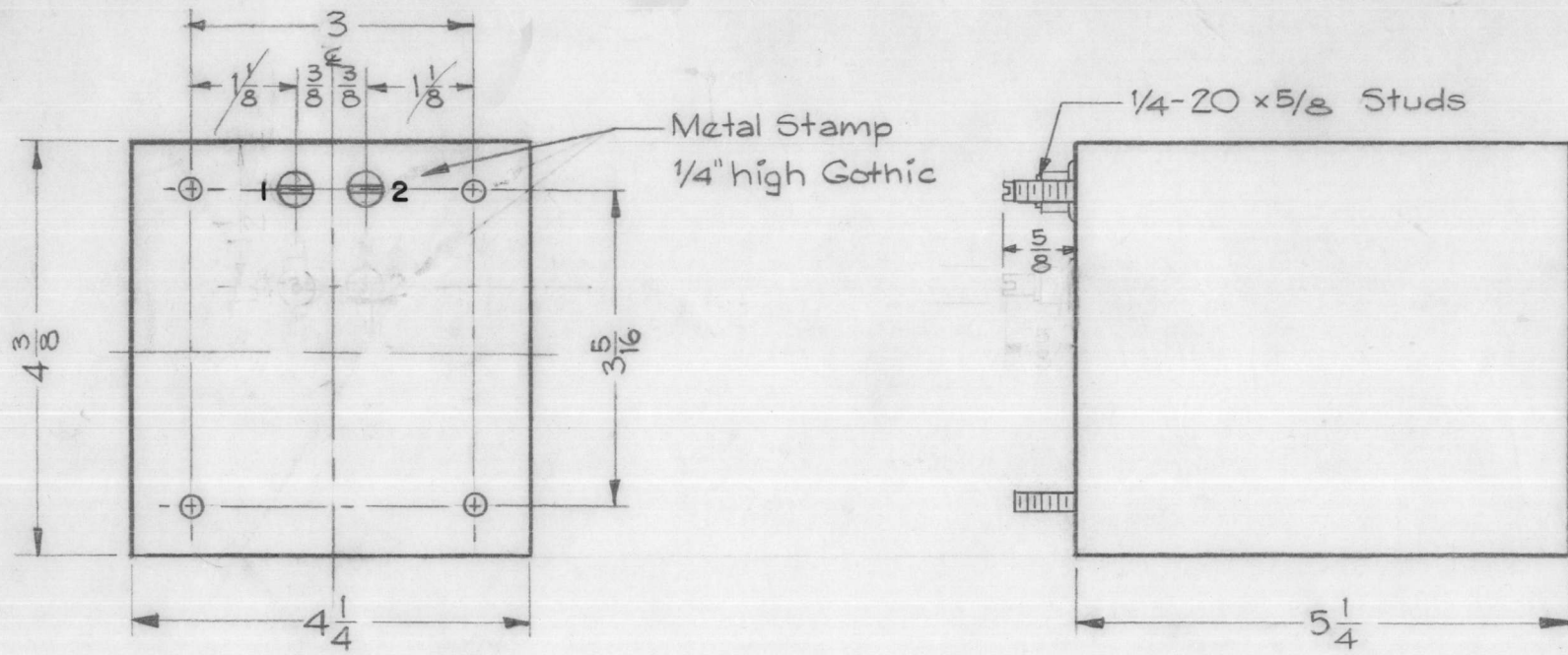
NOTE: MANUFACTURED IN ACCORDANCE WITH MIL SPEC T-27-A EXCEPT THAT MIL SPEC T-27-A SHALL NOT APPEAR ON CASE AND QUALIFICATION TESTING IS NOT REQUIRED.

TOLERANCES		SCALE:
DEC. DIM. ±	A	MAXIMUM ALLOWABLE TOLERANCES HAVE BEEN DETERMINED AND ANY DEVIATIONS WILL BE CAUSE FOR REJECTION; REMOVE ALL BURRS AND SHARP EDGES
FRAC. DIM. ±		
ANGULAR DIM. ±		

1	CPP-2	E-1047-1	9-10-59
REQ. PER UNIT	MODEL	PROJECT NO.	ASSY. NO.
USED ON			

REQ.	ITEM	PART NO.	DESCRIPTION	SYMBOL
			THE TECHNICAL MATERIEL CORP. MAMARONECK, NEW YORK	
			TRANSFORMER, POWER	
			MATERIAL	
			TYPE & TEMPER	
			HEATTREAT. SPEC.	
			FINISH & SPEC. NO.	
			DRAWN	CHECKED
			FINAL APPROVAL	
			ELEC. DES. APP.	MECH. DES. APP.

TF-5015 A



NOTE: MANUFACTURED IN ACCORDANCE WITH MIL SPEC T-27-A EXCEPT THAT MIL SPEC T-27-A SHALL NOT APPEAR ON CASE AND QUALIFICATION TESTING IS NOT REQUIRED.

~ ELECTRICAL SPECIFICATION ~

Inductance: 7Hy at 400 MA  
 Insulation: 3KV  
 Test Voltage: 2.5 KV

~ MECHANICAL SPECIFICATION ~

Case: Rectangular, Steel, MIL Type YY, Hermetically Sealed.  
 Finish: TMC Smooth Gray Enamel (TMCS-115) Except terminal end.  
 Size: 4 1/4 x 4 3/8 x 5 1/4 high, Excluding terminals & studs.  
 Stamping: Terminals Shall be metal stamped 1 & 2 as shown. Opposite end shall be stamped in Black as shown. (See Stamping Detail).

Stamping Detail  
 Black Gothic

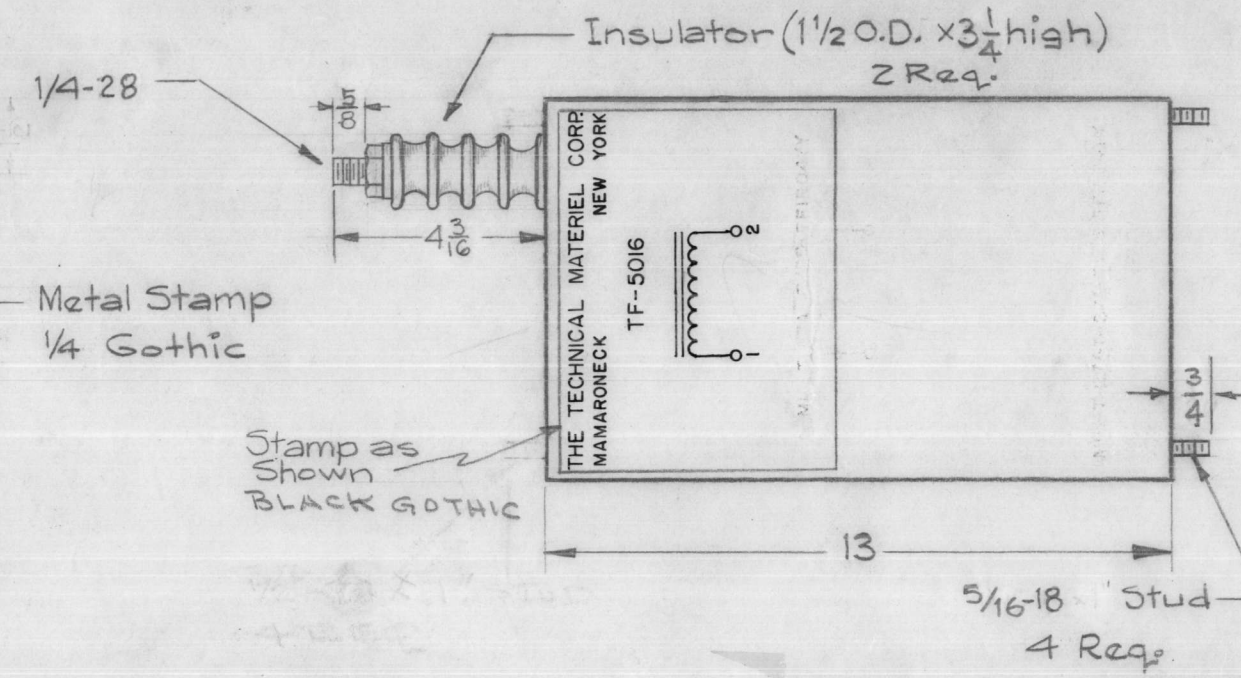
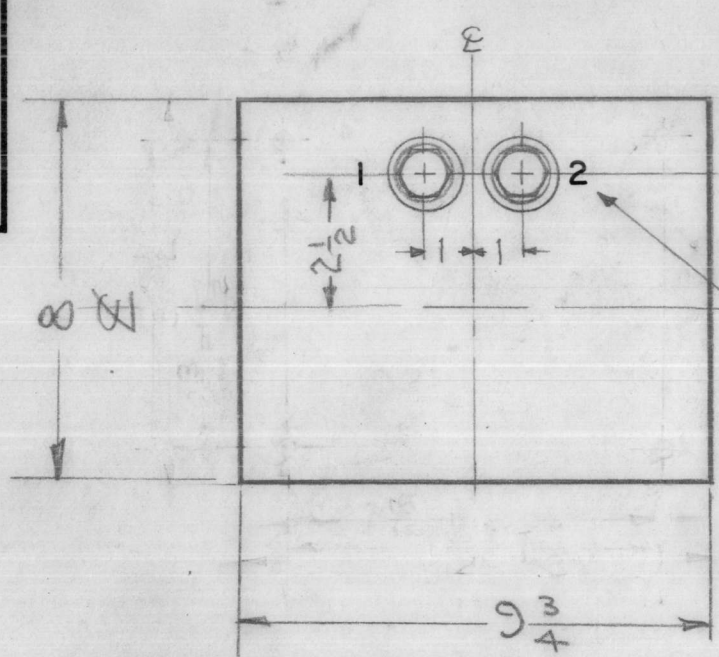
ISSUE	ITEM	CHANGED FROM	DATE	CH. NO.	DRAFTS	CHECKER	ENG. APP.
A	1	NOTE ADDED (MIL T-27-A)	6-30-60	2572		JCB	LB

TOLERANCES		SCALE:
DEC. DIM. ±	A	MAXIMUM ALLOWABLE TOLERANCES HAVE BEEN DETERMINED AND ANY DEVIATIONS WILL BE CAUSE FOR REJECTION; REMOVE ALL BURRS AND SHARP EDGES
FRAC. DIM. ±		
ANGULAR DIM. ±		

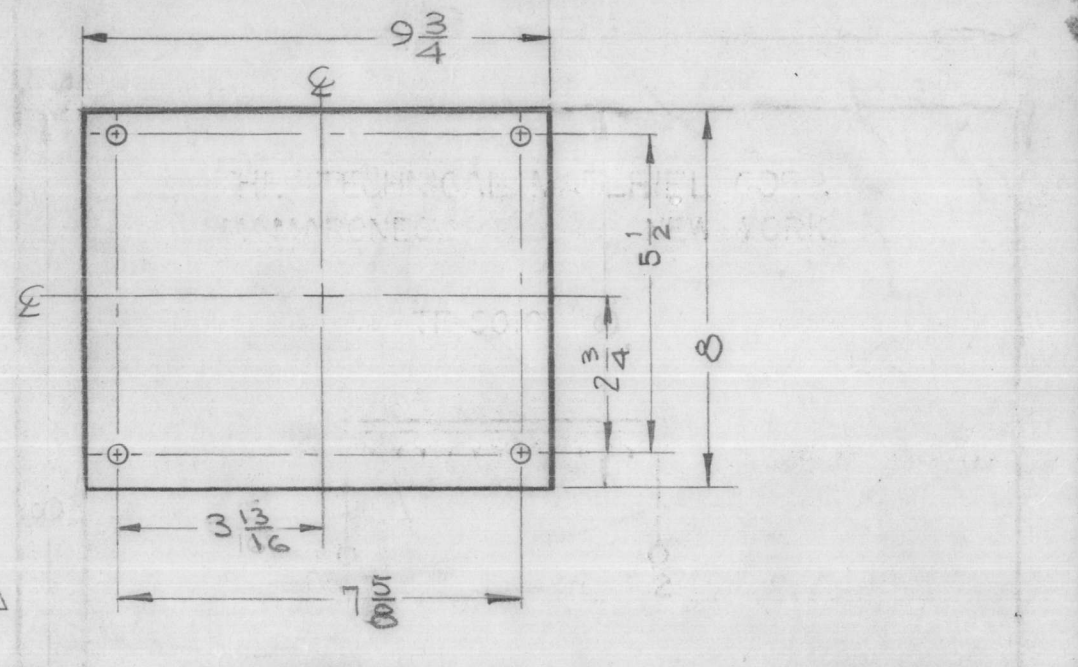
REQ. PER UNIT	MODEL	PROJECT NO.	ASSY. NO.	DATE
1	GPT-40K			12-21-59
USED ON				

REQ.	ITEM	PART NO.	DESCRIPTION	SYMBOL
			THE TECHNICAL MATERIEL CORP. MAMARONECK, NEW YORK	
			REACTOR, FILTER	
			7 HENRY, 400 MA	
			DRAWN: <i>Edm</i> CHECKED: <i>File</i> FINAL APPROVAL: <i>2B</i>	
			ELEC. DES. APP	TF-5015
			MECH. DES. APP	A

TF-5016 E



MODEL	FUNCTION
GPT-40K	FILTER CHOKE, H.V.



NOTE: MANUFACTURED IN ACCORDANCE WITH MIL SPEC T-27-A EXCEPT THAT MIL SPEC T-27-A SHALL NOT APPEAR ON CASE AND QUALIFICATION TESTING IS NOT REQUIRED.

— ELECTRICAL SPECIFICATIONS —  
 Inductance : 0.4 Hy at 4.5 Amps DC  
 Insulation : for 25,000 Volts

— MECHANICAL SPECIFICATIONS —  
 Case : Rectangular, Steel, MIL Type YY hermetically Sealed.  
 Size : 8x9 3/4x13, Excluding Studs & Terminals.  
 Finish : TMC Smooth Gray Enamel (TMC S-115) Except terminal end.  
 Stamping : Terminals shall be metal stamped 1 & 2 as shown.

Transformer shall be in accordance with MIL-T-27A and amend. MIL Type : TEIRO4YY

E	1	STUD WAS 1/2 LONG	8.8.64	12070	WB	NP	20
D	1	DIMS-4 3/16 WAS 4, 5/8 WAS 3/4	3-15-63	8575	RC	W8	10
C	1	NOTE ADDED (MIL T-27-A)	6-30-60	2572			10
B	2	1/2 WAS 1	2/12-60	~	WF	H2	20
A	1	5/16-18 Studs were 1/2-18	1/12/60	1753	J.C.B.	W8	20

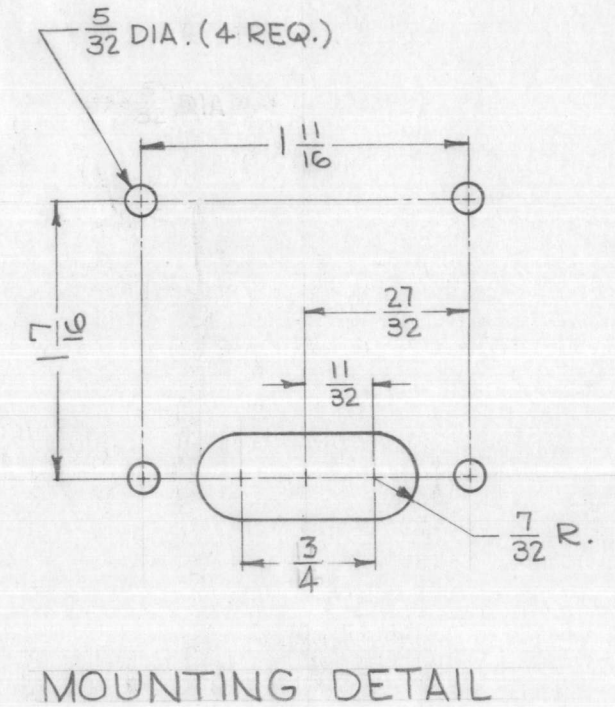
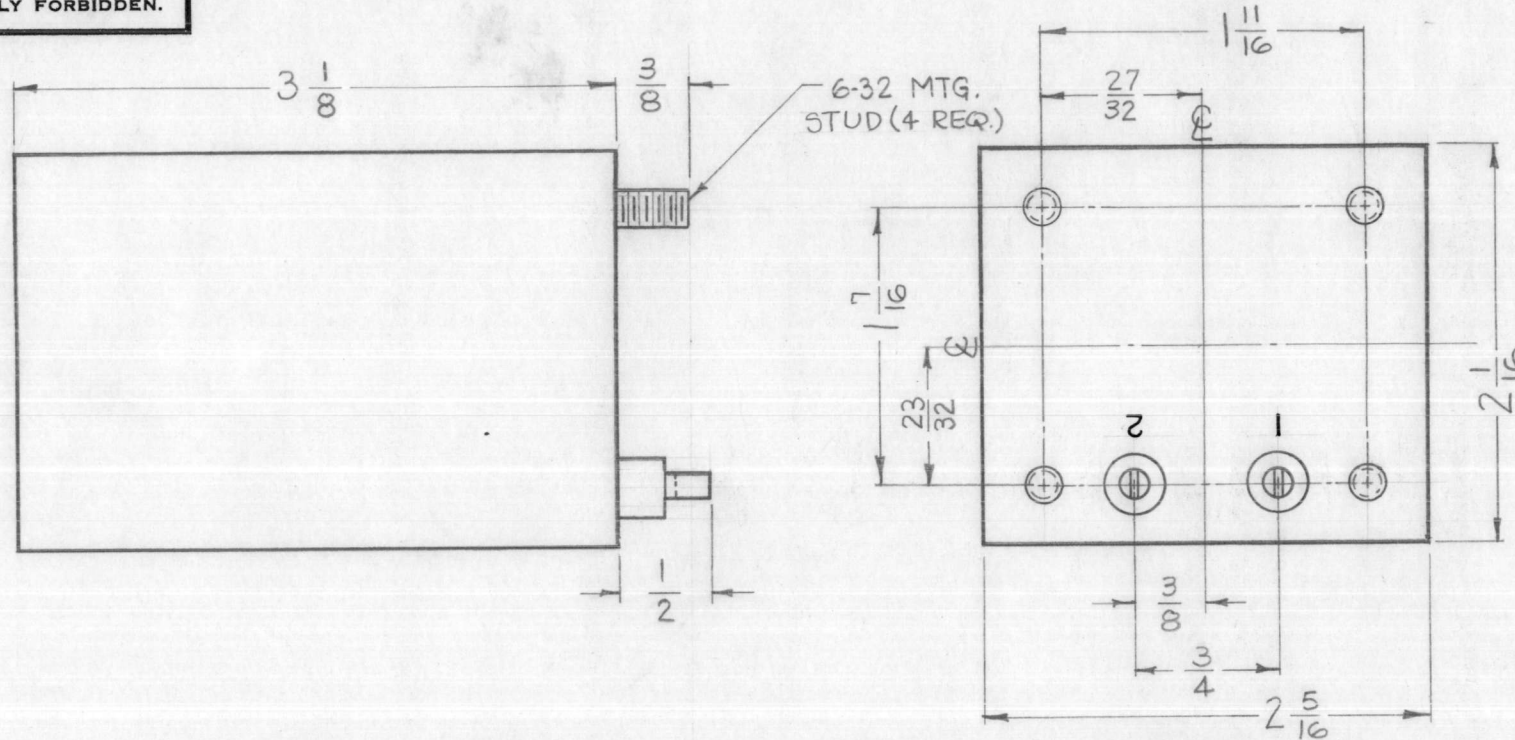
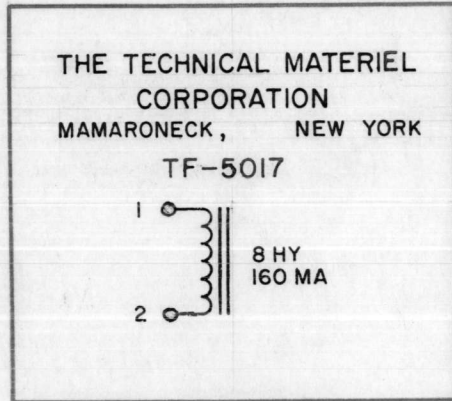
ISSUE	ITEM	CHANGED FROM	DATE	CH. NO.	DRAFTS	CHECKER	ENG. APP.
TOLERANCES			SCALE: 1/4				
DEC. DIM. ±			MAXIMUM ALLOWABLE TOLERANCES HAVE BEEN DETERMINED AND ANY DEVIATIONS WILL BE CAUSE FOR REJECTION. REMOVE ALL BURRS AND SHARP EDGES				
FRAC. DIM. ±							
ANGULAR DIM. ±							

REQ. PER UNIT	MODEL	PROJECT NO.	ASSY. NO.	DATE
1	GPT-40K			12-21-59
USED ON				

REQ.	ITEM	PART NO.	DESCRIPTION	SYMBOL
			THE TECHNICAL MATERIEL CORP. MAMARONECK, NEW YORK	
STOCK SIZE			REACTOR, FILTER	
MATERIAL				
TYPE & TEMPER			HEAT TREAT. SPEC.	
FINISH & SPEC. NO.			ELEC. DES. APP.	MECH. DES. APP.
			DRAWN	CHECKED
			FINAL APPROVAL	
			TF-5016	E.

TF-5017

THE CONTENTS OF THIS DRAWING ARE THE EXCLUSIVE PROPERTY OF THE TECHNICAL MATERIEL CORP. ITS UNAUTHORIZED USE OR REPRODUCTION IN WHOLE OR IN PART IS STRICTLY FORBIDDEN.



S P E C I F I C A T I O N S

STAMPING -

TERMINALS SHALL BE METAL STAMPED 1-2 AS SHOWN.  
SCHEMATIC DIAGRAM TO BE PLACED ON END OPPOSITE TERMINAL END, AS SHOWN.  
BLACK GOTHIC LETTERING AND LINE WORK.

INDUCTANCE - 8 hy AT 160 MADC AT 120 cps

MAXIMUM DC CURRENT - 160 MA

DC RESISTANCE NOMINAL - 180 OHMS

INSULATION TEST VOLTAGE - 1500 V DC

CASE - RECTANGULAR STEEL, HERMETICALLY SEALED

FINISH - S-115 TMC SMOOTH GRAY ENAMEL (EXCEPT STUD END)

DIMENSIONS - SHOWN PICTORIALLY

TERMINALS - SOLDER LUG TYPE, CERAMIC STANDOFF

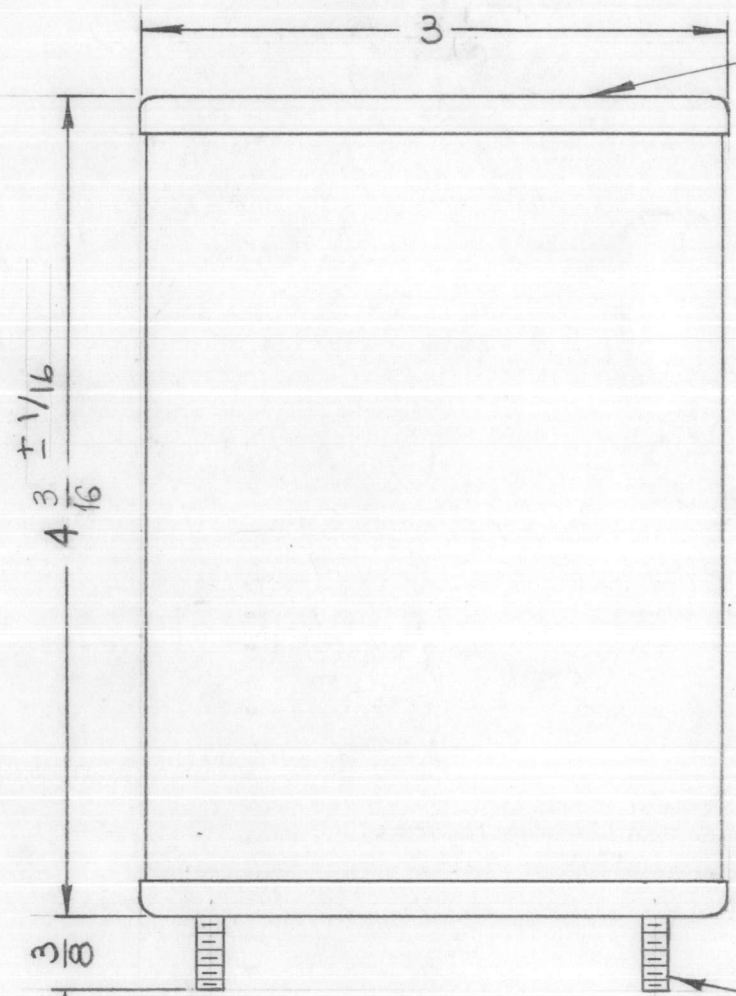
NOMINAL AMBIENT TEMPERATURE - 50°C.

NOTE: MANUFACTURED IN ACCORDANCE WITH MIL SPEC T-27-A, EXCEPT THAT MIL SPEC T-27-A SHALL NOT APPEAR ON CASE AND QUALIFICATION TESTING IS NOT REQUIRED.

REQ. ITEM	PART NO.	Q. POSE	DESCRIPTION	R. KOHN	SYMBOL
STOCK SIZE		THE TECHNICAL MATERIEL CORP. MAMARONECK, NEW YORK			
MATERIAL		REACTOR			
TYPE & TEMPER		DRAWN		CHECKED	
HEAT TREAT. SPEC.		ELEC. DES. APP.		MECH. DES. APP.	
FINISH & SPEC. NO.		6/6/63		TF-5017	

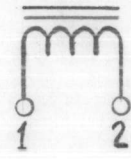
SYM	DESCRIPTION	DATE	CH. NO.	DRAFTS	CHECKER	ENG. APP.
UNLESS OTHERWISE SPECIFIED:						
DIMENSIONS ARE IN INCHES		SCALE: FULL				
TOLERANCES ON		MAXIMUM ALLOWABLE TOLERANCES HAVE BEEN DETERMINED AND ANY DEVIATIONS WILL BE CAUSE FOR REJECTION.				
FRACTIONS ± 1/64		DECIMALS ± .005				
ANGLES ± 1/2°		REMOVE ALL BURRS AND SHARP EDGES				

REQ. PER UNIT	MODEL	SECTION	ASS'Y. NO.	DATE
1	TTR-10	PWR SUPPLY	AX-413	6-6-63
2	LFA-4			4-30-63



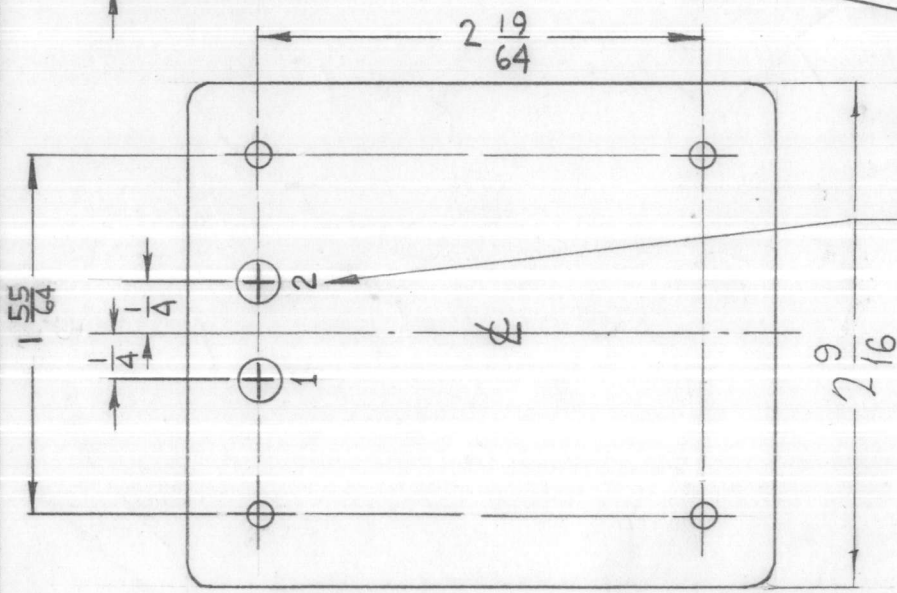
TO BE PLACED ON TOP OF TRANSFORMER

THE TECHNICAL MATERIEL CORPORATION  
MAMARONECK NEW YORK  
TF5020



60 CPS

8-32 STUD: -4 REQ.



MARK TERMINALS

TF5020 A

REVISIONS

SYM	DESCRIPTION	DATE	E.M.N. NO.	DRAFT	CHKD	APPD
X	EXPERIMENTAL RELEASE	2-26-65		HLA	J.M	
Ø	ORIGINAL RELEASE FOR PRODUCTION	3-11-65	-A	HLA	V.M	
A	± 1/16 TOL. ADD. TO DIM. 4-3/16.	4-19-65	13839	xl.	JTB	

CASE DATA:

- A. HERMETICALLY SEALED
- B. FULLY ENCLOSED
- C. GRAY
- D. MATERIAL: STEEL, HOT TIN DIPPED

OVER ALL WINDING DATA

- A. 1 AMP @ 35 MH, 3MH @ 6 AMP
- B. 50/60 CPS
- C. SINGLE

TAP DATA:

- A. QUANTITY 2
- B. 1.0 AMP @ 35MH, 3MH @ 6 AMP

TERMINAL DATA:

- A. QUANTITY 2

MARKING: SCHEMATIC TO BE STAMPED IN BLACK, LETTERING GOTHIC, AS PER TMC SPEC. S-727 LOCATED AS SHOWN.

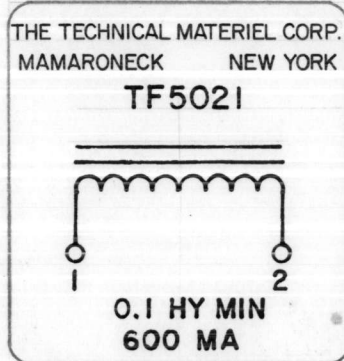
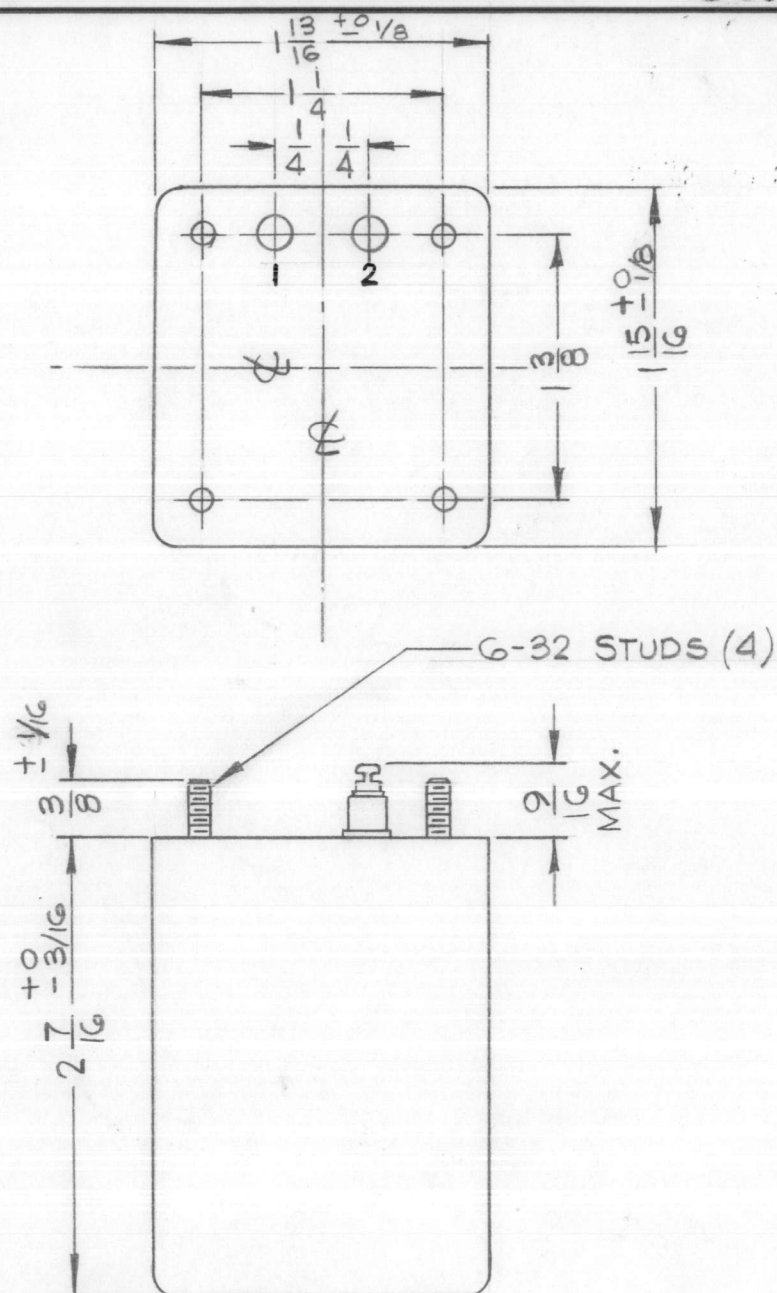
REQ'D.	ITEM	PART NUMBER	DESCRIPTION	SYMBOL
<b>EATON LIST OF MATERIAL</b>				
MATERIAL		SEE SPECS		
FINISH		SEE SPECS		
		<b>THE TECHNICAL MATERIEL CORP. MAMARONECK, NEW YORK</b>		
		<b>FILTER, CHOKE</b>		
UNLESS OTHERWISE SPECIFIED DIMENSIONS ARE IN INCHES AND INCLUDE CHEMICALLY APPLIED OR PLATED FINISHES		DRAWN H. AUSTIN DATE 2-26-65	FINAL APPROVAL 	DATE 3/23/65
DECIMALS .X ± .05 .XX ± .01 .XXX ± .005		TOLERANCES ± 1/64 ANGLES ± 0° 30'		ELECT. DES. 
		MECH. DES. 		DATE 3-25-65
				A
				SHEET
				REV. LTR.

Q'TY./UNIT	MODEL USED ON	ASS'Y. NO.
SCALE 1:1	CODE C	S401-30 (5493C)

THE CONTENTS OF THIS DRAWING ARE THE EXCLUSIVE PROPERTY OF THE TECHNICAL MATERIEL CORP. ITS UNAUTHORIZED USE OR REPRODUCTION IN WHOLE OR IN PART IS STRICTLY FORBIDDEN.

NOTES

# STANDARD DRAWING



### NOTES

RTTD-1		
Q'TY./UNIT	MODEL USED ON	ASS'Y. NO.
SCALE -4-	CODE C	S401-30 (5494B)
THE CONTENTS OF THIS DRAWING ARE THE EXCLUSIVE PROPERTY OF THE TECHNICAL MATERIEL CORP. ITS UNAUTHORIZED USE OR REPRODUCTION IN WHOLE OR IN PART IS STRICTLY FORBIDDEN.		

TF5021

### REVISIONS

SYM	DESCRIPTION	DATE	E.M.N. NO.	DRAFT	CHKD	APPD
Ø	ORIGINAL RELEASE FOR PRODUCTION	5/17/66		C.V.		J.R.

### SPECIFICATIONS

#### ELECTRICAL:

INDUCTANCE: 0.1 HY MIN  
DC CURRENT RATING: 600 MA  
DC RESISTANCE: 2.5 Ω NOMINAL  
INSULATION TEST VOLTAGE: 500 VOLTS

#### MECHANICAL:

CASE: CRS STEEL, HERMETICALLY SEALED  
FINISH: S115 TMC GRAY, (EXCEPT STUD END)  
DIMENSIONS: SHOWN PICTORALLY  
TERMINALS: SOLDER LUG TYPE, CERAMIC STAND OFF  
TOLERANCE: ±1/32 UNLESS OTHERWISE SPECIFIED

#### STAMPING:

TERMINALS SHALL BE METAL STAMPED 1-2 AS SHOWN.  
SCHEMATIC DIAGRAM TO BE PLACED ON END OPPOSITE TERMINAL END, AS SHOWN.  
BLACK GOTHIC LETTERING AND LINE WORK.

**NOTE:** MANUFACTURED IN ACCORDANCE W/MIL-SPEC T-27-A, EXCEPT THAT MIL SPEC T-27-A SHALL NOT APPEAR ON CASE AND QUALIFICATION TESTING IS NOT REQUIRED.

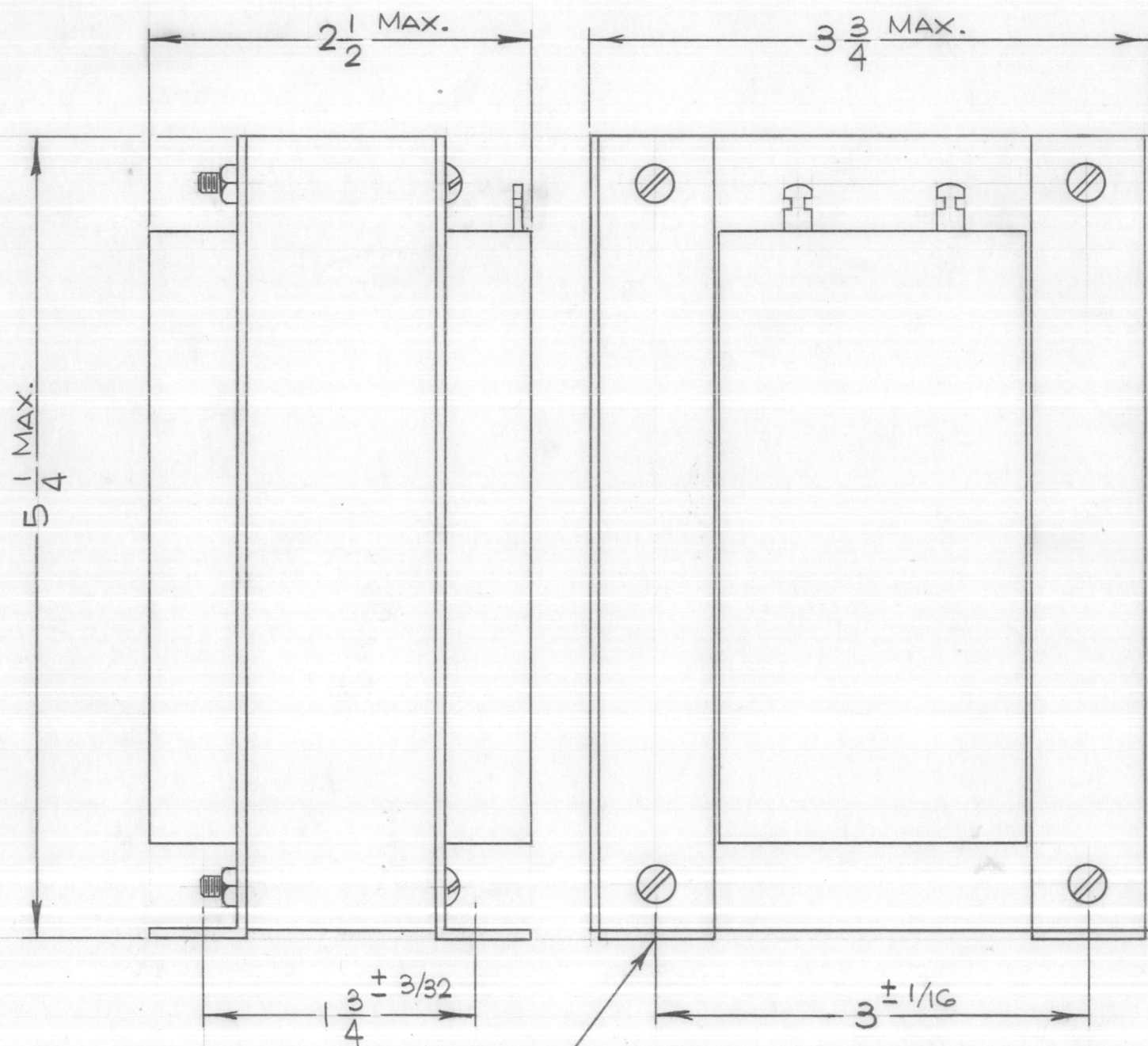
REQ'D.	ITEM	PART NUMBER	DESCRIPTION	SYMBOL
<b>EATON LIST OF MATERIAL</b>				
MATERIAL		SEE SPECS.	THE TECHNICAL MATERIEL CORP. MAMARONECK, NEW YORK	
FINISH		SEE SPECS.	TITLE CHOKE, FILTER	
UNLESS OTHERWISE SPECIFIED DIMENSIONS ARE IN INCHES AND INCLUDE CHEMICALLY APPLIED OR PLATED FINISHES			DRAWN H. AUSTIN DATE 3-18-66 CHECKED J.B. DATE 3/25/66 ELECT. DES. J.P.C. DATE 5/17/66 MECH. DES.	FINAL APPROVAL J.R. DATE 5/16/66 <b>TF5021</b> SHEET
DECIMALS .X ± .05 .XX ± .01 .XXX ± .005			FRACTIONS ± 1/64 ANGLES ± 0° 30'	REV. LTR. Ø

# STANDARD DRAWING

TF5022

## REVISIONS

SYM	DESCRIPTION	DATE	E.M.N. NO.	DRAFT	CHKD	APPD
XI	36 OHMS ADDED TO DC RES. NOM.	10/4/65		JC		
Ø	ORIGINAL RELEASE FOR PROJ	10/26/65				



## SPECIFICATIONS

INDUCTANCE: 2 HY  
 MAXIMUM DC CURRENT- 600 MADC  
 DC RESISTANCE NOMINAL - 36 OHMS  
 INSULATION TEST VOLTAGE- 8000 VDC  
 WORKING VOLTAGE- 5000 VDC  
 CASE- OPEN FRAME  
 FINISH: S-115 TMC SMOOTH GRAY ENAMEL (EXCEPT TERMINALS)  
 DIMENSIONS: SHOWN PICTORIALY  
 TERMINALS: SOLDER LUG TYPE  
 NOMINAL AMBIENT TEMPERATURE: 50°C  
 MARKING: BLACK GOTHIC LETTERING

**NOTE:** MANUFACTURED IN ACCORDANCE WITH MIL-S-T-27-A, EXCEPT THAT MIL SPEC. T-27-A SHALL NOT APPEAR ON CASE AND QUALIFICATION TESTING IS NOT REQUIRED.

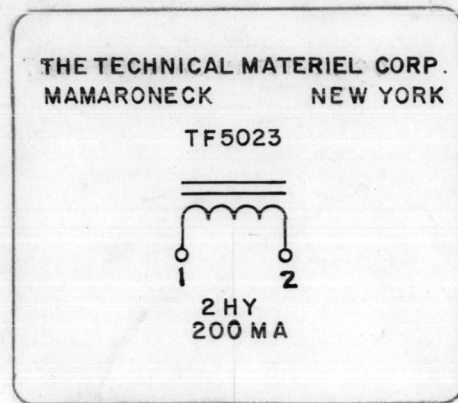
REQ'D.	ITEM	PART NUMBER	DESCRIPTION	SYMBOL
<b>BUDETTI LIST OF MATERIAL</b>				
MATERIAL		<b>THE TECHNICAL MATERIEL CORP. MAMARONECK, NEW YORK</b>		
FINISH		<b>REACTOR</b>		
UNLESS OTHERWISE SPECIFIED DIMENSIONS ARE IN INCHES AND INCLUDE CHEMICALLY APPLIED OR PLATED FINISHES		DRAWN H. AUSTIN DATE 9-21-65	FINAL APPROVAL  DATE 10/20/65	DATE 10/20/65
DECIMALS .X ± .05 .XX ± .01 .XXX ± .005		<b>TOLERANCES</b> FRACTIONS ± 1/64 ANGLES ± 0° 30'		ELECT. DES. MECH. DES.
THE CONTENTS OF THIS DRAWING ARE THE EXCLUSIVE PROPERTY OF THE TECHNICAL MATERIEL CORP. ITS UNAUTHORIZED USE OR REPRODUCTION IN WHOLE OR IN PART IS STRICTLY FORBIDDEN.		DATE 10/26/65	SHEET TF5022	REV. LTR.
		M/L	10/25/65	

## NOTES

Q'TY./UNIT	TST()-2.5K	AP128
SCALE	MODEL USED ON	ASS'Y. NO.
4	C	S401-30(G238)

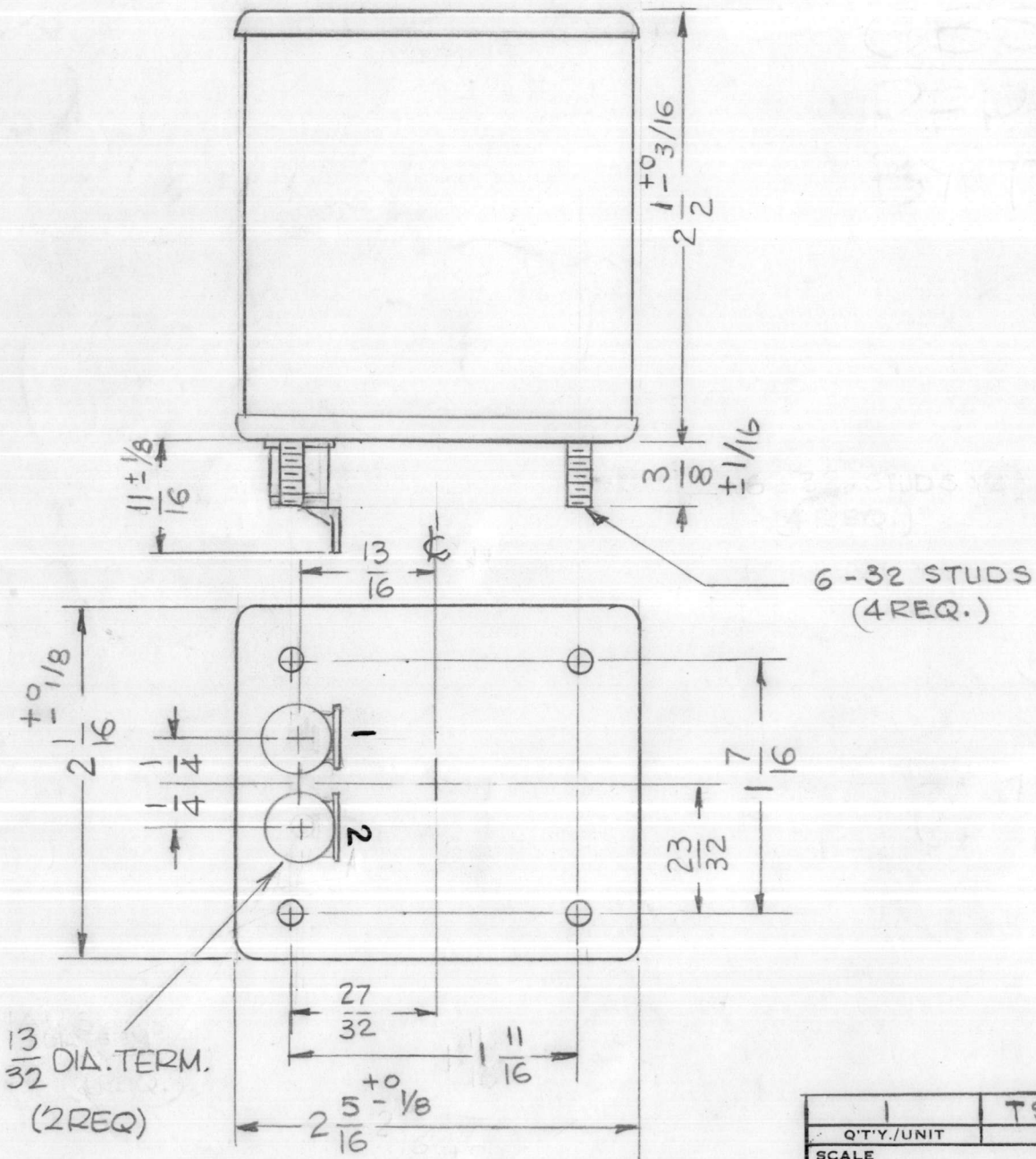


# STANDARD DRAWING



A  
TF5023

REVISIONS						
SYM	DESCRIPTION	DATE	E.M.N. NO.	DRAFT	CHKD	APPD
X1	MODEL WAS TSTA-2.5K	11/5/65	M	JC		
Ø	ORIGINAL RELEASE FOR PRODUCTION	12/1/65		R.V.V.		
A	CHG'D. DIM. FROM 11/16 TO 11/16 ± 1/8 (TERM.)	7/22/66	16615	RME	JFB	



Elect. Specs.

INDUCTANCE - 1.8 HY MIN  
 CURRENT RATING - 200 MA. DC  
 DC RESISTANCE - 100Ω APPROX.  
 WORKING VOLT. - 900V  
 TEST VOLT. - 2500 VOLTS, 30 VOLTS @ 400 CPS

Mech. Specs.

CASE - STEEL, HERMETICALLY SEALED  
 TERMINALS - CERAMIC, SOLDER TERMINAL  
 MARKING - TERMINALS TO BE STAMPED 1 & 2.  
 OPPOSITE END TO BE STAMPED AS  
 SHOWN IN BLACK.

FINISH S-115 SMOOTH GRAY ENAMEL(EXCEPT FOR STUD END)

13/32 DIA. TERM.  
(2REQ)

**NOTES**

QTY./UNIT	MODEL USED ON	ASS'Y. NO.
SCALE 1:1	CODE C	S401-30-6630

THE CONTENTS OF THIS DRAWING ARE THE EXCLUSIVE PROPERTY OF THE TECHNICAL MATERIEL CORP. ITS UNAUTHORIZED USE OR REPRODUCTION IN WHOLE OR IN PART IS STRICTLY FORBIDDEN.

REQ'D.	ITEM	PART NUMBER	DESCRIPTION	SYMBOL
<b>BUDETTI LIST OF MATERIAL</b>				
MATERIAL			<b>THE TECHNICAL MATERIEL CORP. MAMARONECK, NEW YORK</b>	
FINISH			TITLE <b>REACTOR</b>	
UNLESS OTHERWISE SPECIFIED DIMENSIONS ARE IN INCHES AND INCLUDE CHEMICALLY APPLIED OR PLATED FINISHES			DRAWN G.D.L.	DATE 10-7-65
DECIMALS .X ± .05 .XX ± .01 .XXX ± .005			CHECKED JFB	DATE 10/7/65
FRACTIONS ± 1/32 ANGLES ± 0° 30'			ELECT. DES. JFB	DATE 12/22/65
TOLERANCES			MECH. DES. JC	DATE 12/22/65
			M/L LS	
			FINAL APPROVAL JFB	DATE 10/22/65
			TF 5023	A
			SHEET	REV. LTR.

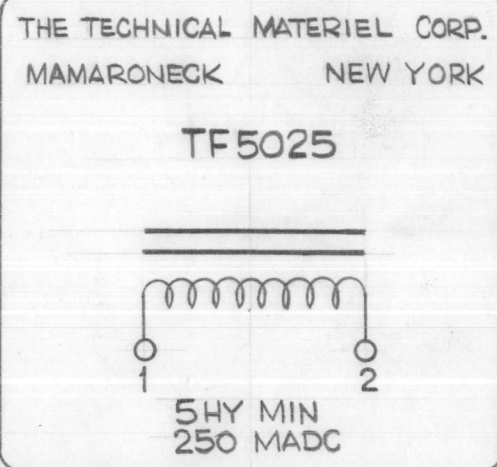
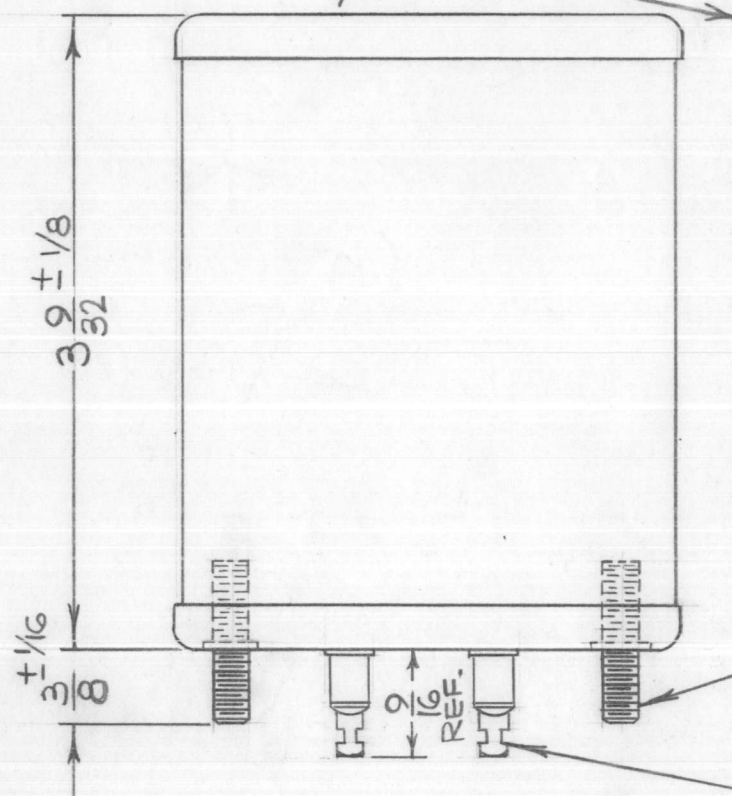
# STANDARD DRAWING

A  
TF5025

### REVISIONS

SYM	DESCRIPTION	DATE	E.M.N. NO.	DRAFT	CHKD	APPD
XI	90 OHMS ADDED TO DC RES. NOM.	10/4/65	M	JC		
0	ORIGINAL RELEASE FOR PROD	10/26/65				
A	ADDED LETTERING 1&2 TO TERM	8-11-66	16732	RME	JCB	MA

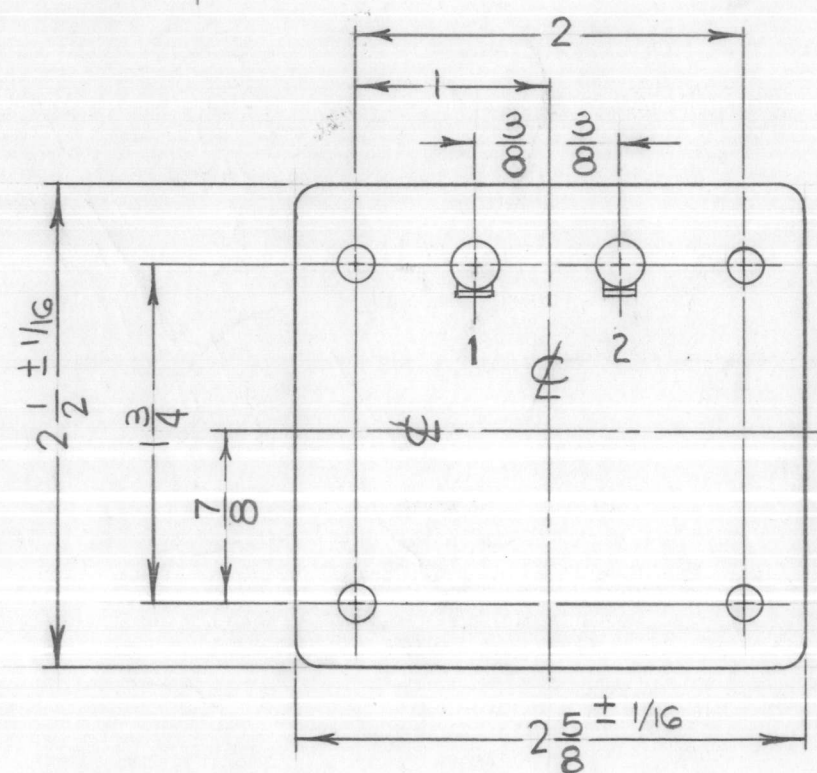
BOTTOM VIEW



BOTTOM VIEW

8-32 STUDS  
(4 REQ.)

1/4 DIA. TERM.  
(2 REQ.)



### SPECIFICATIONS:

**INDUCTANCE:** 5 HY MINIMUM  
**MAXIMUM DC CURRENT:** 250 MADC  
**DC RESISTANCE NOMINAL:** 90 OHMS  
**INSULATION TEST VOLTAGE:** 1500 V DC  
**WORKING VOLTAGE:** 450V, 120 CPS; 30V, 400 CPS  
**CASE:** RECTANGULAR STEEL, HERMETICALLY SEALED  
**FINISH:** S-115 TMC SMOOTH GRAY ENAMEL (EXCEPT STUD END)  
**DIMENSIONS:** SHOWN PICTORIALY  
**TERMINALS:** SOLDER LUG TYPE, CERAMIC STANDOFF  
**NOMINAL AMBIENT TEMPERATURE:** 50°C

### STAMPING:

TERMINALS SHALL BE METAL STAMPED 1-2 AS SHOWN. SCHEMATIC DIAGRAM TO BE PLACED ON END OPPOSITE TERMINAL END, AS SHOWN. BLACK GOTHIC LETTERING AND LINE WORK.

### NOTE:

MANUFACTURED IN ACCORDANCE WITH MIL-SPEC. T-27-A, EXCEPT THAT MIL SPEC. T-27-A SHALL NOT APPEAR ON CASE AND QUALIFICATION TESTING IS NOT REQUIRED.

REQ'D.	ITEM	PART NUMBER	DESCRIPTION	SYMBOL
<b>BUDETTI LIST OF MATERIAL</b>				
MATERIAL			<b>THE TECHNICAL MATERIEL CORP. MAMARONECK, NEW YORK</b>	
FINISH			REACTOR	
UNLESS OTHERWISE SPECIFIED DIMENSIONS ARE IN INCHES AND INCLUDE CHEMICALLY APPLIED OR PLATED FINISHES			DRAWN H. AUSTIN DATE 9-21-65	FINAL APPROVAL  DATE 10/7/65
DECIMALS .X ± .05 .XX ± .01 .XXX ± .005			ELECT. DES.  DATE 11/9/66	TF5025 A
FRACTIONS ± 1/64 ANGLES ± 0° 30'			MECH. DES.  DATE 10/26/65	SHEET REV. LTR.
M/L			DATE 10/25/65	

2	API28	A5256
Q'TY./UNIT	MODEL USED ON	ASS'Y. NO.
SCALE #	CODE C	S401-30(6625)

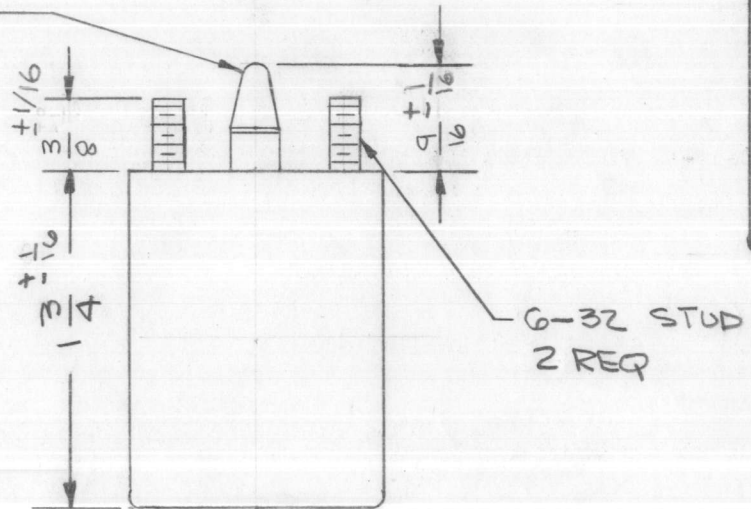
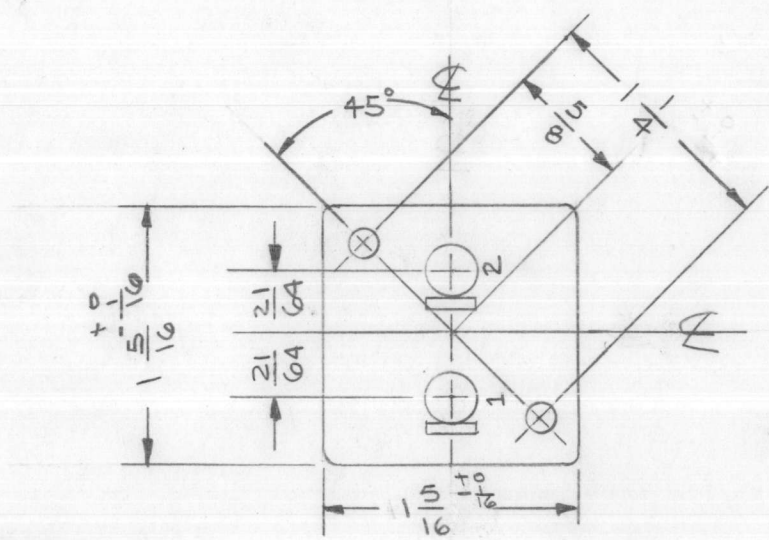
THE CONTENTS OF THIS DRAWING ARE THE EXCLUSIVE PROPERTY OF THE TECHNICAL MATERIEL CORP. ITS UNAUTHORIZED USE OR REPRODUCTION IN WHOLE OR IN PART IS STRICTLY FORBIDDEN.

NOTES

TF5028

REVISIONS

SYM	DESCRIPTION	DATE	E.M.N. NO.	DRAFT	CHKD	APPD
Ø	ORIGINAL RELEASE FOR PRODUCTION	10/27/65	Ø	X.V.V.		



**THE TECHNICAL MATERIEL CORPORATION**  
 MAMARONECK, NEW YORK  
 TF5028

5HY  
 25MA DC

INDUCTANCE: 5 HY @ 25MA DC  
 DC RESISTANCE: 375 OHMS  
 WORKING VOLTAGE:  
 TEST VOLTAGE:  
 CASE MATERIAL: Steel, Hermitically sealed.  
 FINISH: TMC Gray, S115 (Except Stud end)  
 TERMINAL TYPE: Ceramic, solder lug

**STAMPING**  
 Terminals shall be metal stamped 1-2 as shown. Schematic Diagram to be placed on end opposite terminal end, as shown. Black Gothic lettering and line work.

**NOTE**  
 Manufactured in accordance with MIL SPEC T-27-A, except that MIL SPEC T-27-A shall not appear on case and qualification testing is not required.

REQ'D.	ITEM	PART NUMBER	DESCRIPTION	SYMBOL
<b>BUDETTI LIST OF MATERIAL</b>				
MATERIAL			<b>THE TECHNICAL MATERIEL CORP. MAMARONECK, NEW YORK</b>	
SEE NOTE			TITLE <b>REACTOR</b>	
FINISH			SEE NOTE	
UNLESS OTHERWISE SPECIFIED DIMENSIONS ARE IN INCHES AND INCLUDE CHEMICALLY APPLIED OR PLATED FINISHES			DRAWN <b>EAENZA</b> DATE <b>9-17-65</b> CHECKED <b>JKS</b> DATE <b>10/7/65</b> ELECT. DES. <b>JKS</b> DATE <b>11/9/66</b> MECH. DES. DATE	FINAL APPROVAL  <b>TF 5028</b> DATE <b>10/27/65</b>
DECIMALS .X ± .05 .XX ± .01 .XXX ± .005			<b>TOLERANCES</b> FRACTIONS ± 1/64 ANGLES ± 0° 30'	SHEET REV. LTR.
1 QTY./UNIT SCALE 1:1 MODEL USED ON CODE ASS'Y. NO. <b>S401-30(6979)</b>			M/L <b>JPL</b> 10/25/65	

THE CONTENTS OF THIS DRAWING ARE THE EXCLUSIVE PROPERTY OF THE TECHNICAL MATERIEL CORP. ITS UNAUTHORIZED USE OR REPRODUCTION IN WHOLE OR IN PART IS STRICTLY FORBIDDEN.

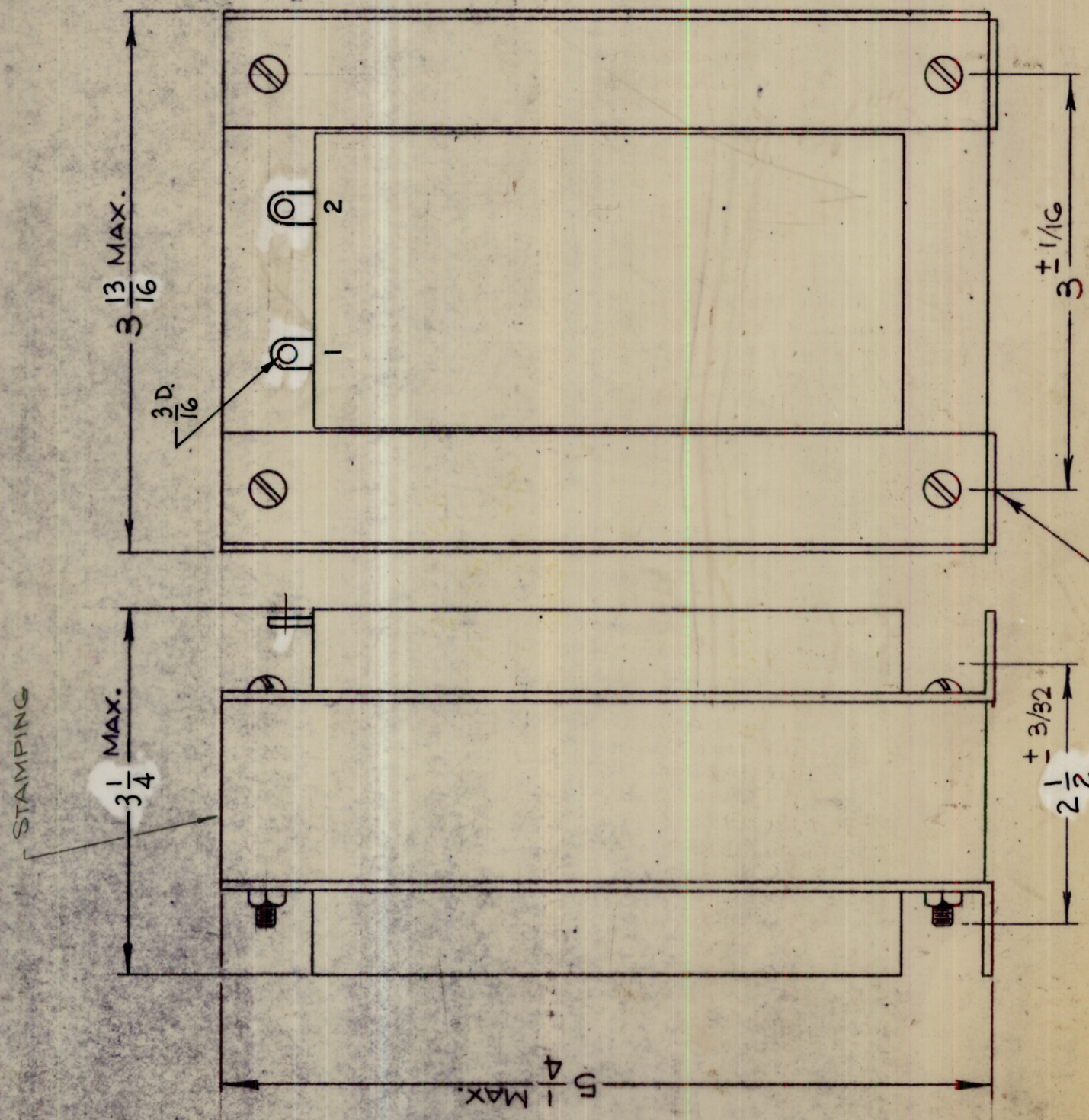
NOTES

STANDARD DRAWING

REVISIONS

SYM	DESCRIPTION	DATE	E.M.N. NO.	DRAFT	CHKD	APPD
X1	SPECS & OVERALL SIZE REVISED	6-5-66	X1	LAB		
Ø	ORIGINAL RELEASE FOR PRODUCTION	2-27-67		L.A.K.		

TF 5029



**SPECIFICATIONS**  
 INDUCTANCE: 1.7 HY MIN.  
 MAXIMUM DC CURRENT - 1.3 ADC  
 DC RESISTANCE NOMINAL - 18 OHMS  
 INSULATION TEST VOLTAGE - 10,000V ERMS  
 WORKING VOLTAGE - 5000 VDC  
 CASE - OPEN FRAME  
 FINISH: BLACK MATT. (EXCEPT TERMINALS)  
 DIMENSIONS: SHOWN PICTORIALY  
 TERMINALS: LUGS FOR 8-32 SCREWS  
 NOMINAL AMBIENT TEMPERATURE: 50°C  
 MARKING: WHITE GOTHIC LETTERING

**NOTE:** MANUFACTURED IN ACCORDANCE WITH MIL-S-T-27-A, EXCEPT THAT MIL SPEC. T-27-A SHALL NOT APPEAR ON CASE AND QUALIFICATION TESTING IS NOT REQUIRED.

THE TECHNICAL MATERIEL CORPORATION  
 MAMARONECK  
 TF5029

STAMP ON TOP OF REACTOR

REQ'D.	ITEM	PART NUMBER	DESCRIPTION	SYMBOL
	BUDETTI		LIST OF MATERIAL	

MATERIAL:             
 FINISH:           

UNLESS OTHERWISE SPECIFIED DIMENSIONS ARE IN INCHES AND INCLUDE CHEMICALLY APPLIED OR PLATED FINISHES

TOLERANCES

DECIMALS	FRACTIONS
X ± .05	± 1/84
.XX ± .01	ANGLES
.XXX ± .005	± 0° 30'

DATE	DATE	DATE	DATE
4-29-66			

DRAWN: G.D.L.  
 CHECKED: J.F.F.  
 ELECT. DESIGNED: J.F.F.  
 MECH. DESIGNED: J.F.F.

REACTOR

THE TECHNICAL MATERIEL CORP.  
 MAMARONECK, NEW YORK

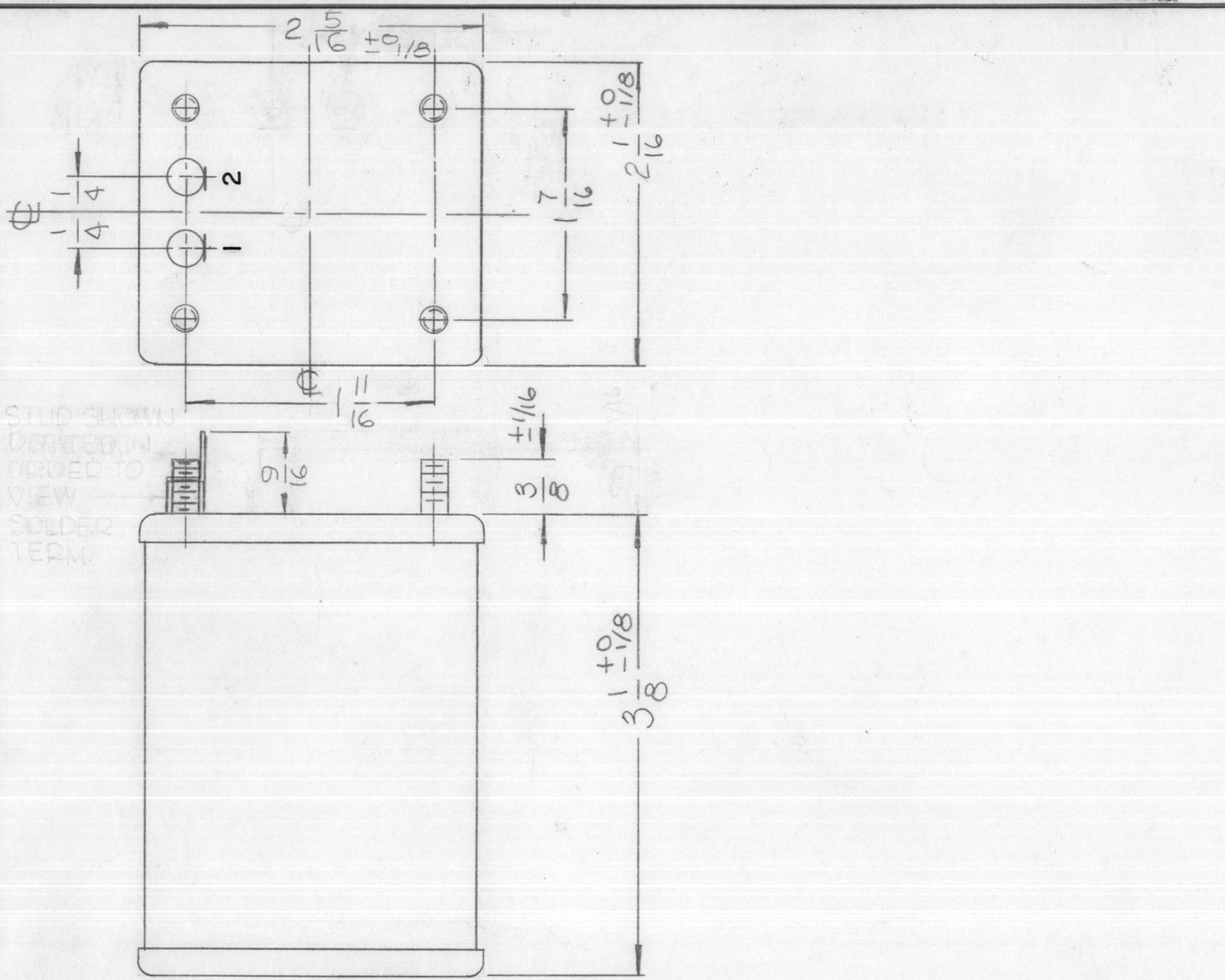
TF 5029

REV. LTR.

**NOTES**

THE CONTENTS OF THIS DRAWING ARE THE EXCLUSIVE PROPERTY OF THE TECHNICAL MATERIEL CORP. ITS UNAUTHORIZED USE OR REPRODUCTION IN WHOLE OR IN PART IS STRICTLY FORBIDDEN.

# STANDARD DRAWING



TF5030

REVISIONS				
SYM	DESCRIPTION	DATE	E.M.N. NO.	DRAWN
X	EXPERIMENTAL RELEASE	6.2.66	H	WFO
Ø	ORIGINAL RELEASE FOR PRODUCTION	6-28-66	Ø	G.D.L.

## SPECIFICATIONS

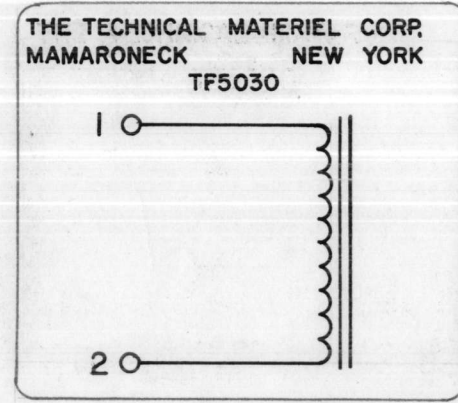
**ELECTRICAL:**  
 INDUCTANCE: 1.5HY ±10%  
 DC CURRENT RATING: 300MADC  
 DC RESISTANCE: 36Ω APPROX  
 INSULATION TEST VOLTAGE: 1KVRMS

**MECHANICAL:**  
 CASE: CR STEEL, HOT TIN DIP, HERMITICALLY SEALED  
 FINISH: S115 TMC GRAY (EXCEPT STUD END)  
 DIMENSIONS: SHOWN PICTORIALY  
 TERMINALS: SOLDER LUG TYPE, CERAMIC STANDOFF  
 MTG. STUDS: 6-32 x 3/8 LONG

**STAMPING:**  
 TERMINALS SHALL BE METAL STAMPED AS SHOWN.  
 SCHEMATIC DIAGRAM TO BE PLACED ON END OPPOSITE TERMINAL END (AS SHOWN).  
 BLACK GOTHIC LETTERING & LINE WORK AS PER TMC SPECIFICATION (S727).

## NOTE

MANUFACTURED IN ACCORDANCE WITH MIL-SPEC T-27-A, EXCEPT THAT MIL-SPEC T-27-A SHALL NOT APPEAR ON CASE AND QUALIFICATION TESTING IS NOT REQUIRED



## NOTES

MARK AS SHOWN LETTERS  
 3/8" HIGH AS PER SPEC S727

1	CFA-2	
Q'TY./UNIT	MODEL USED ON	ASS'Y. NO.
SCALE	CODE	S401-30 (7335)

THE CONTENTS OF THIS DRAWING ARE THE EXCLUSIVE PROPERTY OF THE TECHNICAL MATERIEL CORP. ITS UNAUTHORIZED USE OR REPRODUCTION IN WHOLE OR IN PART IS STRICTLY FORBIDDEN.

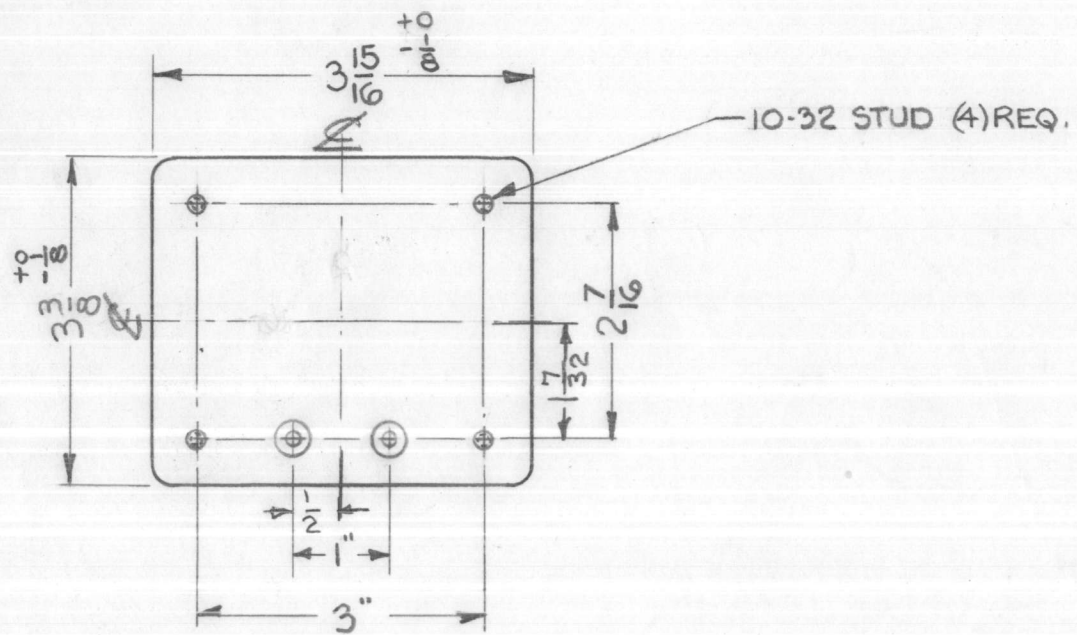
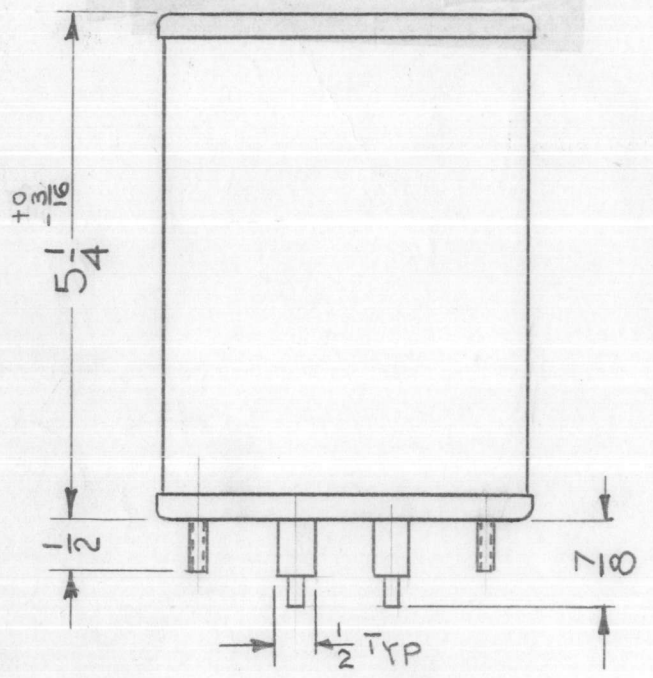
REQ'D.	ITEM	PART NUMBER	DESCRIPTION	SYMBOL
DUDDLES LIST OF MATERIAL				
MATERIAL			THE TECHNICAL MATERIEL CORP. MAMARONECK, NEW YORK	
FINISH			TITLE	
SEE SPECS			REACTOR	
UNLESS OTHERWISE SPECIFIED DIMENSIONS ARE IN INCHES AND INCLUDE CHEMICALLY APPLIED OR PLATED FINISHES				
DECIMALS	TOLERANCES		FRACTIONS	
.X ± .05			± 1/64	
.XX ± .01			ANGLES	
.XXX ± .005			± 0° 30'	
DRAWN	DATE	FINAL APPROVAL	DATE	
WFO	6.2.66	[Signature]	6/28/66	
CHECKED	DATE			
[Signature]	6-14-66			
ELECT. DES.	DATE			
[Signature]				
MECH. DES.	DATE			
[Signature]				
			SHEET	REV. LTR.

# STANDARD DRAWING

THE TECHNICAL MATERIEL CORP.  
MAMARONECK NEW YORK

TF5031

7 TO 25HYS  
80 TO 300MA



TF 5031

REVISIONS						
SYM	DESCRIPTION	DATE	E.M.N. NO.	DRAFT	CHKD	APPD
X	EXPERIMENTAL RELEASE	10/26/66	X			
Ø	ORIGINAL RELEASE FOR PRODUCTION	3-20-67		L.A.K.		

**SPECIFICATIONS:**

**SPECIFICATIONS**

INDUCTANCE RANGE: 7 TO 25 Hys  
 DC CURRENT RATING: 80 TO 300 MA  
 DC RESISTANCE: 140 ±15%  
 INSULATION TEST VOLTS: 6000 RMS

**CASE DATA:**

HERMETICALLY SEALED: YES  
 CASE TYPE: FULLY INCLOSED  
 MATERIAL: COLD ROLLED STEEL  
 MOUNTING: (4) 10-32 STUDS, ON 3" BY 2 7/16" CENTERS  
 TERMINALS: STANDOFF CERAMIC SOLDER TYPE  
 QUANTITY OF TERMINALS: 2

REQ'D.	ITEM	PART NUMBER	DESCRIPTION	SYMBOL
<b>BUTLER LIST OF MATERIAL</b>				
MATERIAL			THE TECHNICAL MATERIEL CORP. MAMARONECK, NEW YORK	
SEE SPECS.			REACTOR, SWINGING CHOKE	
FINISH			TITLE	
UNLESS OTHERWISE SPECIFIED DIMENSIONS ARE IN INCHES AND INCLUDE CHEMICALLY APPLIED OR PLATED FINISHES			DRAWN	DATE
			<i>[Signature]</i>	7-12-66
			CHECKED	DATE
			<i>[Signature]</i>	10/28/66
			ELECT. DES.	DATE
			<i>[Signature]</i>	10/28/66
			MECH. DES.	DATE
			TF 5031	
			SHEET	
			REV. LTR.	

Q'TY./UNIT	MODEL USED ON	ASS'Y. NO.
	PSP 350-C	
SCALE	CODE	
HALF		S401-30 (BTC 7487)

**NOTES**

THE CONTENTS OF THIS DRAWING ARE THE EXCLUSIVE PROPERTY OF THE TECHNICAL MATERIEL CORP. ITS UNAUTHORIZED USE OR REPRODUCTION IN WHOLE OR IN PART IS STRICTLY FORBIDDEN.

DECIMALS  
.X ± .05  
.XX ± .01  
.XXX ± .005

**TOLERANCES**

FRACTIONS  
± 1/64  
ANGLES  
± 0° 30'

5

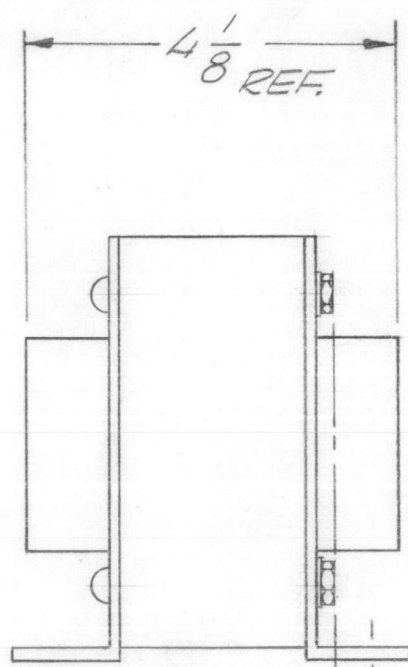
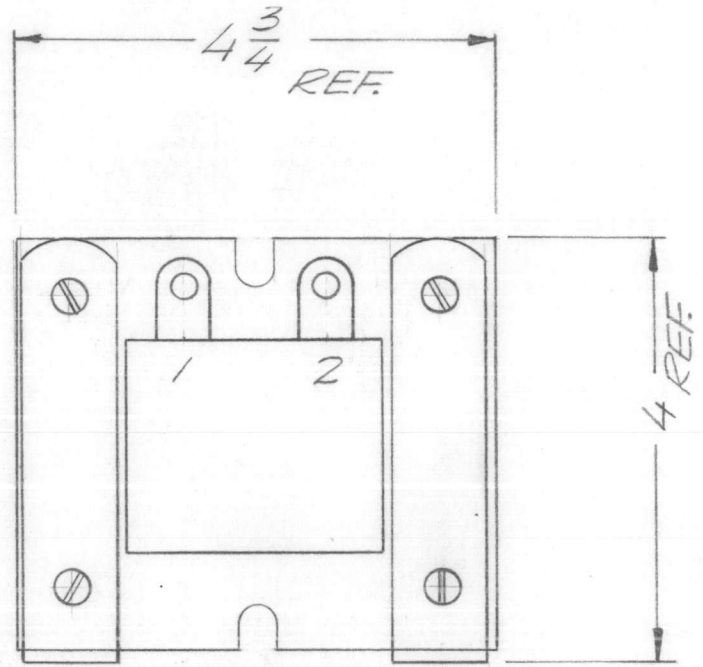
4

3

2

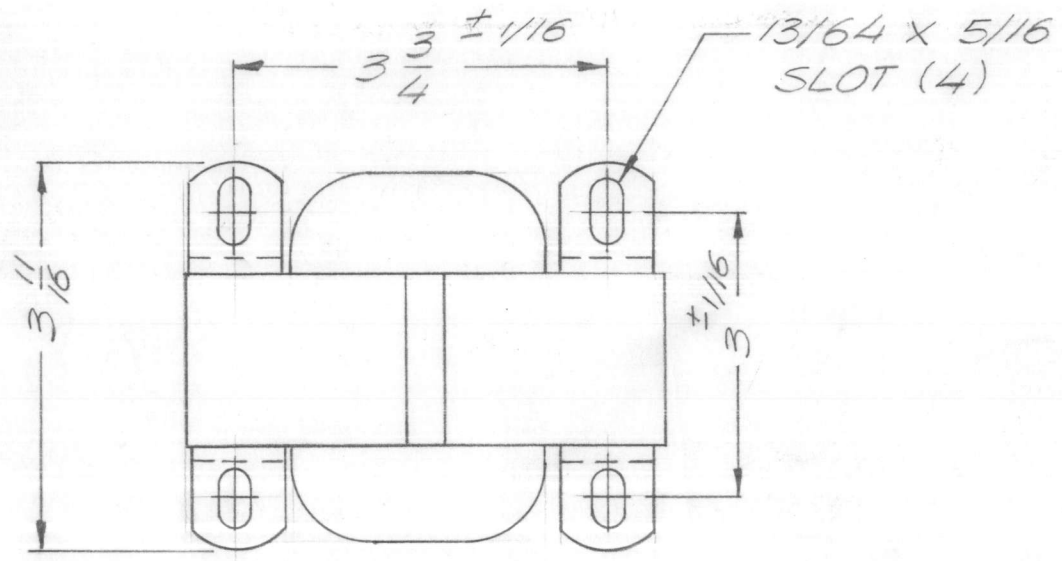
1

REVISIONS						
ZONE	LTR	DESCRIPTION	DATE	E.M.N.NO	DRAFT	CHKD APPD
	X	EXP RELEASE	3/19/70		GE	
	Ø	ORIG RELEASE FOR PROD	3/23/70		CV	
	A	ADD 7/32 DIM. FRM. Q OF MTG. H.	5-5-72	20669	GE	Ø Ø
	B	.50 ADC WAS 5.0	8-18-80	21826	dw	Ø



ELECTRICAL SPECIFICATIONS

5.0 hy @ .50 ADC  
 DC RES = 45 Ω APPROX  
 MAX. W.V. = 4000V



TMC TF 5034  
 5.0 hy @ .50 ADC

TOP VIEW THIS SIDE ONLY

REQ'D	ITEM	PART NUMBER	DESCRIPTION	SYM.
F. BUDETTI LIST OF MATERIAL				
	1	HFLA 10 K	AP 148	
	1	PALA 10 K	AP 148	
UNLESS OTHERWISE SPECIFIED DIMENSIONS ARE IN INCHES AND INCLUDE CHEMICALLY APPLIED OR PLATED FINISHES DECIMALS: .X ± .05, .XX ± .01, .XXX ± .005 FRACTIONS: 1/64, ANGLES: 0° -30' MATERIAL: _____ FINISH: _____				
THE TECHNICAL MATERIEL CORP. MAMARONECK, NEW YORK <b>REACTOR</b>				
FINAL APPROVAL: <i>[Signature]</i> DATE: 3/22/70 MECH. DES. DATE: _____ ELECT. DES. DATE: 3/19/70 CHECKED: <i>[Signature]</i> DATE: _____ DRAWN: <i>[Signature]</i> DATE: 3/19/70		SIZE: B CODE IDENT. NO.: 82679 DWG NO.: TF 5034 ISSUE: B		
APPLICATION: _____ CODE: S401-(7751)			SCALE: NTS SHEET: _____ OF _____	
NOTICE TO PERSONS RECEIVING THIS DRAWING THE TECHNICAL MATERIEL CORPORATION claims proprietary right in the material disclosed hereon. This drawing is issued in confidence for engineering information only and may not be reproduced or used to manufacture anything shown hereon without permission from THE TECHNICAL MATERIEL CORPORATION to the user. This drawing is loaned for mutual assistance and is subject to recall at any time.				

5

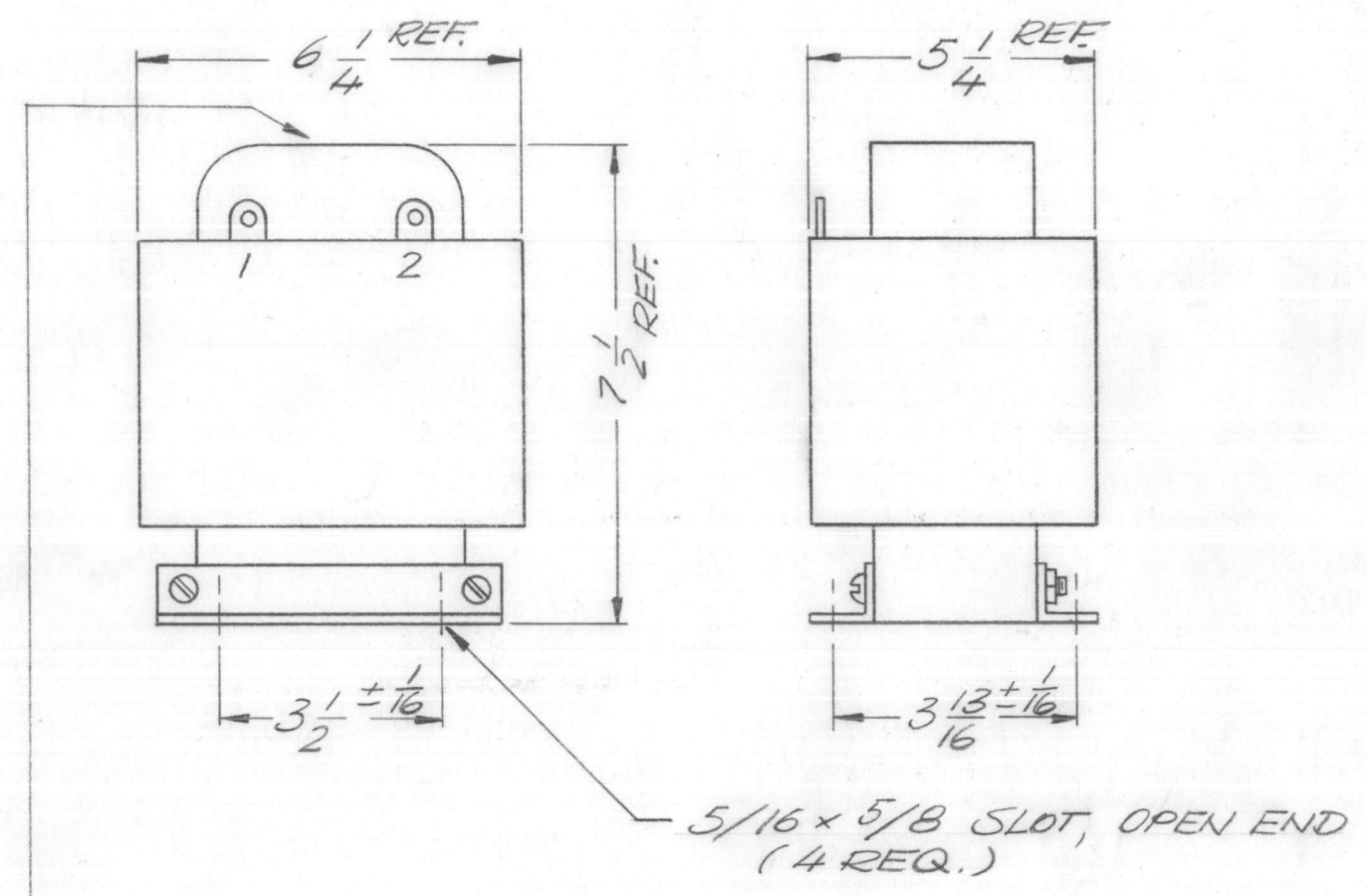
4

3

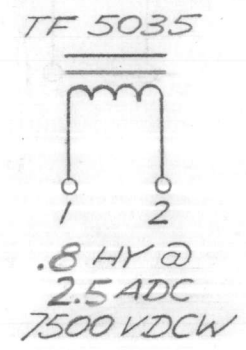
2

1

REVISIONS							
ZONE	LTR	DESCRIPTION	DATE	E.M.N.NO	DRAFT	CHKD	APPD
	X	EXP. RELEASE	12/3/69				
	<del>Ø</del>	ORIGINAL RELEASE	1/14/70				
	A	INDUCT. WAS. 2.0HY@1.6ADC	6/27/72	20772	CE	ej	eg



THE TECHNICAL MATERIEL CORP.  
MAMARONECK NEW YORK



**ELECT. SPECS.**

INDUCTANCE: .8 HY AT 2.5 ADC  
 DC RESISTANCE: 16 Ω APPROX.  
 INSULATION TEST VOLTAGE: 11500 VRMS  
 WORKING VOLTAGE: 7,500 VDC

**MECH. SPECS.**

CASE: OPEN FRAME  
 FINISH: BLACK MATT  
 (EXCEPT TERMINALS)  
 DIMENSIONS: SHOWN PICTORIALY  
 TERMINALS: SOLDER LUG TYPE  
 MARKING: ACCORDING TO TMC SPEC S 727  
 WHITE GOTHIC LETTERING AND LINE WORK.  
 SCHEMATIC TO BE PLACED AS SHOWN.

**NOTE:**

MANUFACTURED IN ACCORDANCE WITH MIL - SPEC. T-27-A, EXCEPT THAT MIL - SPEC. T-27-A SHALL NOT APPEAR ON CASE AND QUALIFICATION TESTING IS NOT REQUIRED.

1	PALA-10K	AP 148
QTY / UNIT	MODEL USED ON	ASS'Y NO.
APPLICATION		
	CODE	5401-30 (6239)

**NOTICE TO PERSONS RECEIVING THIS DRAWING**  
 THE TECHNICAL MATERIEL CORPORATION claims proprietary right in the material disclosed hereon. This drawing is issued in confidence for engineering information only and may not be reproduced or used to manufacture anything shown hereon without permission from THE TECHNICAL MATERIEL CORPORATION to the user. This drawing is loaned for mutual assistance and is subject to recall at any time.

UNLESS OTHERWISE SPECIFIED DIMENSIONS ARE IN INCHES AND INCLUDE CHEMICALLY APPLIED OR PLATED FINISHES

DECIMALS	FRACTIONS
.X ± .05	1/64
.XX ± .01	TOLS. ANGLES
.XXX ± .005	0° -30'

MATERIAL

FINISH

REQ'D	ITEM	PART NUMBER	DESCRIPTION	SYM.
BUDETTI LIST OF MATERIAL				
THE TECHNICAL MATERIEL CORP. MAMARONECK, NEW YORK				
REACTOR				
SIZE	CODE IDENT. NO.	DWG NO.	ISSUE	
B	82679	TF 5035	A	
SCALE			SHEET OF	