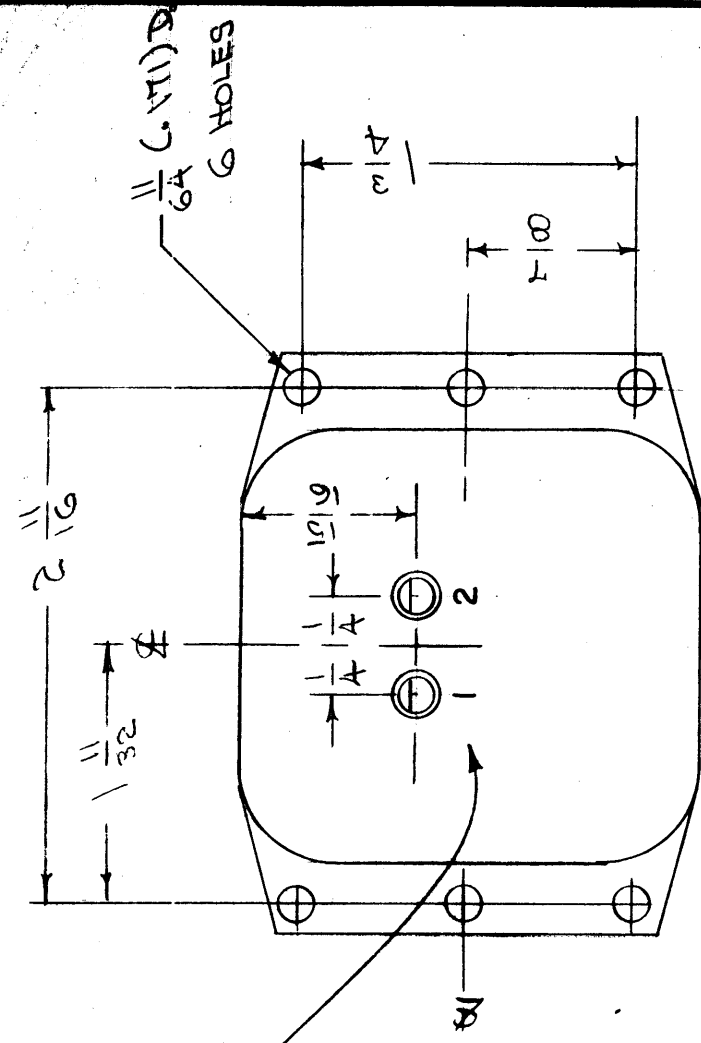
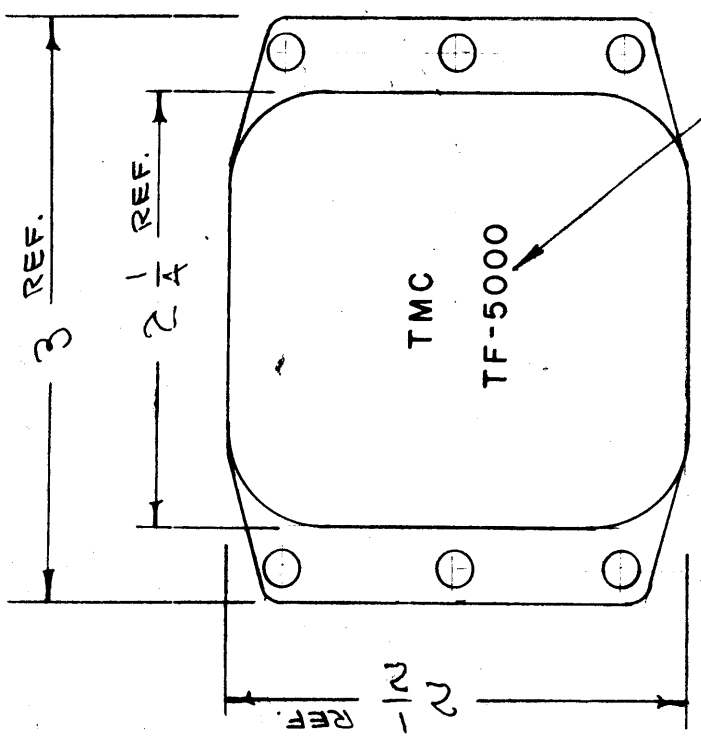
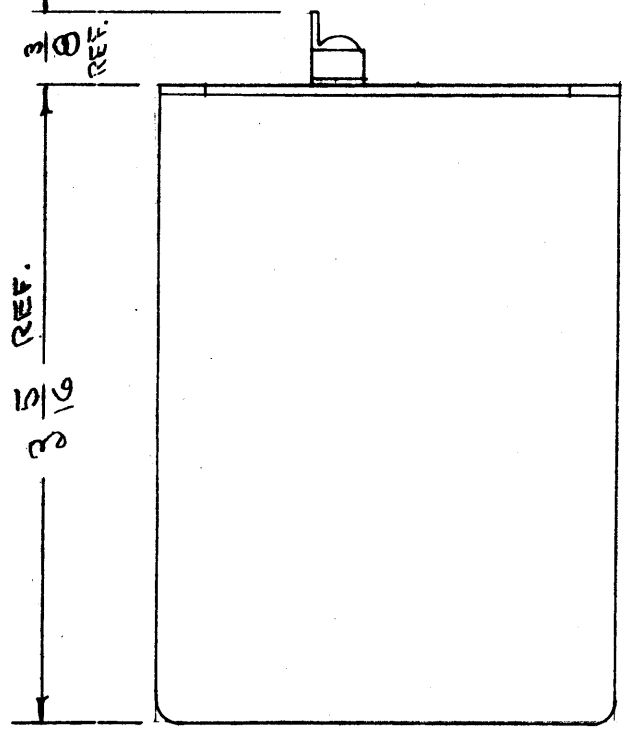


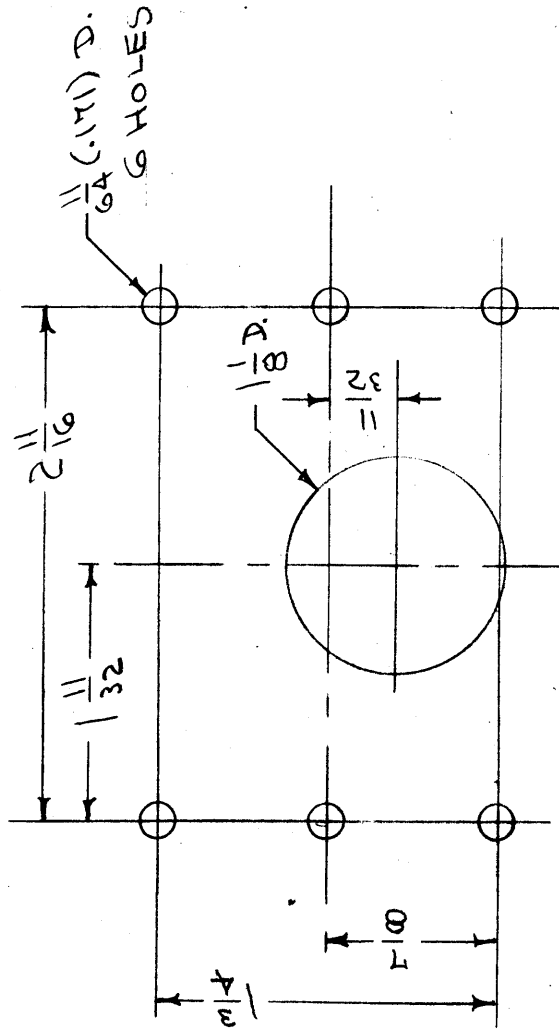
1/8" HIGH METAL STAMP AS SHOWN



STAMP AS SHOWN 1/8 HIGH BLACK GOTHIC

MECHANICAL SPECIFICATIONS:
 CASE - STEEL, HERMETICALLY SEALED
 COLOR - T. M. C. GRAY (S-115) EXCEPT TERMINAL END.
 FILLER - COMPOUND

ELECTRICAL SPECIFICATIONS:
 TERMINALS - SOLDER TYPE, INSULATED
 INDUCTANCE - 15 HENRIES
 MAX. CURRENT DC - 85 MA
 DC RESISTANCE - 285 OHMS
 INSULATION TEST VOLTS RMS - 2500



CHASSIS DRILLING PLAN

NOTICE TO PERSONS RECEIVING THIS DRAWING

THE TECHNICAL MATERIEL CORPORATION claims proprietary right in the material disclosed herein. This drawing is issued in confidence for engineering information only and may not be reproduced or used to manufacture anything shown herein without permission from THE TECHNICAL MATERIEL CORPORATION to the user. This drawing is loaned for mutual assistance and is subject to recall at any time.

Property of:

THE TECHNICAL MATERIEL CORPORATION
 MAMARONECK, NEW YORK

DEC. DIM. ±	FRAC. DIM. ±	ANGULAR DIM. ±	TOLERANCES	DATE	CH. NO.	DRAFTS	CHECKER	ENG. APP.
			A	11/19/56	1	ODD	W.D. AIT	AIT
			SCALE:					
			MAXIMUM ALLOWABLE TOLERANCES HAVE BEEN DETERMINED AND ANY DEVIATION WILL BE CAUSE FOR REJECTION. REMOVE ALL BURRS AND SHARP EDGES					
B			1/8 BLACK GOTHIC STAMP WAS 1/8 METAL STAMP	3-14-63	8537	RC	W	
A	1		INFO. ADDED					
	2		REDRAWN					

REQ. ITEM	PART NO.	SYMBOL	DESCRIPTION
			THE TECHNICAL MATERIEL CORP. MAMARONECK, NEW YORK
			INDUCTOR
			STOCK SIZE
			MATERIAL
			TYPE & TEMPER
			HEAT TREAT. SPEC.
1	CFA	136	8-A-52
1	PST	137	8-A-52
1	DCU		8-A-52
1	DYM		8-A-52
1	FFR	104	8-A-52
RE. PER UNIT	MODEL	PROJECT NO.	DATE
		A-121	ASBY. N.
		USED ON	

FINISH & SPEC. NO.	TYPE & TEMPER	HEAT TREAT. SPEC.	DATE	SYMBOL	DESCRIPTION
					THE TECHNICAL MATERIEL CORP. MAMARONECK, NEW YORK
					INDUCTOR
					STOCK SIZE
					MATERIAL
					TYPE & TEMPER
					HEAT TREAT. SPEC.
					DATE
					ASBY. N.
					USED ON

ODD 11-19-56
 DRAWN
 CHECKED
 A. T. J.
 FINAL APP. T.F-5000

TF-5000

IF IT IS FOUND DESIRABLE TO CHANGE ANY TOLERANCE OR OTHER DETAIL SPECIFIED ON THIS DRAWING NOTIFY THE PURCHASER PROMPTLY.

MAXIMUM ALLOWABLE TOLERANCES HAVE BEEN DETERMINED AND DEVIATIONS WILL BE CAUSE FOR REJECTION. REMOVE ALL BURRS AND SHARP EDGES

RELEASED

TF-5003 B

NOTICE TO PERSONS RECEIVING THIS DRAWING

THE TECHNICAL MATERIEL CORPORATION claims proprietary right in the material disclosed hereon. This drawing is issued in confidence for engineering information only and may not be reproduced or used to manufacture anything shown hereon without permission from THE TECHNICAL MATERIEL CORPORATION to the user. This drawing is loaned for mutual assistance and is subject to recall at any time.

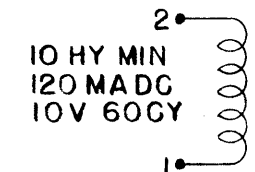
Property of:

THE TECHNICAL MATERIEL CORPORATION
MAMARONECK, NEW YORK

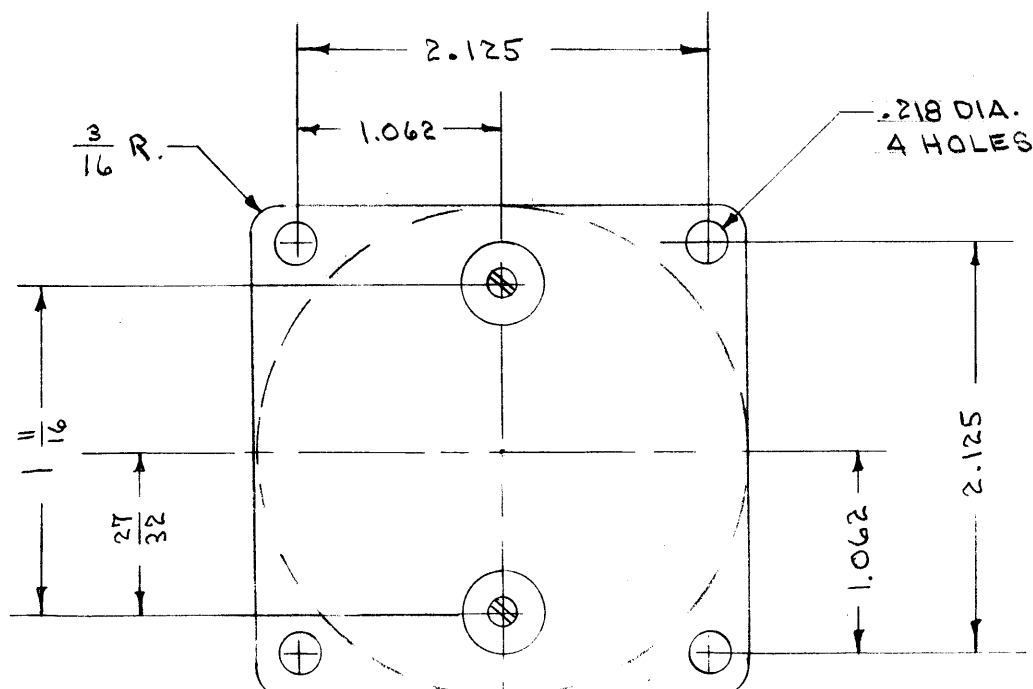
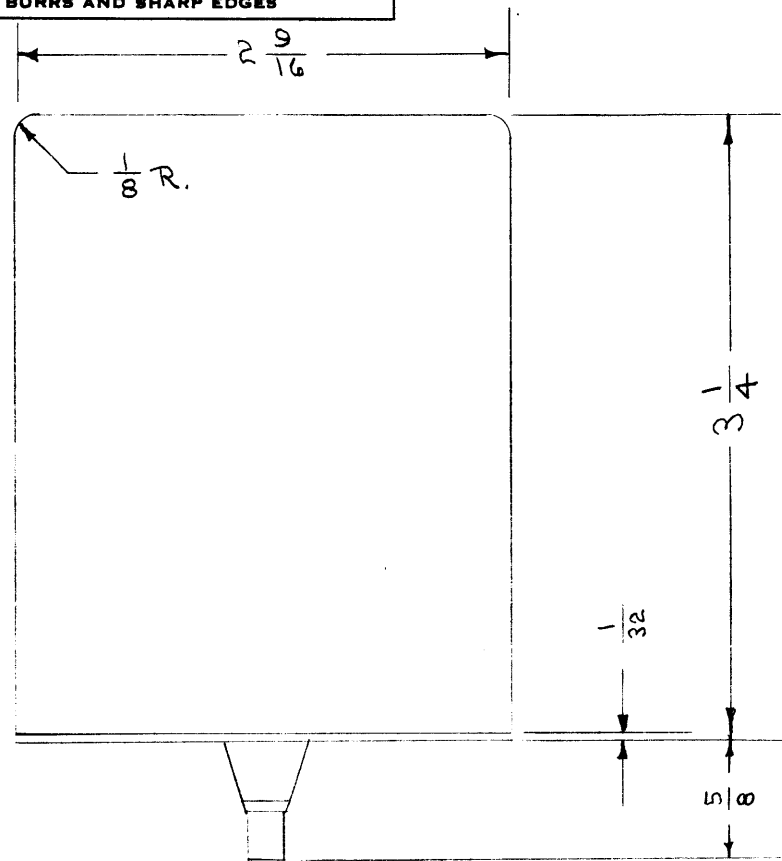
NOTES.:

- 1- MANUFACTURED IN ACCORDANCE WITH MIL SPEC T-27-A EXCEPT THAT MIL SPEC T-27-A SHALL NOT APPEAR ON CASE AND QUALIFICATION TESTING IS NOT REQ.
- 2- FINISH SHALL BE S-116-SMOOTH BLACK ENAMEL.
- 3- SCHEMATIC DIAGRAM, TMC PART NO. (TF-5003), MANUFACTURERS NAME AND PART NO. SHALL APPEAR ON TRANSFORMER.

TMC
TF-5003



10 HY MIN
120 MADC
10V 60CY
DC RES 400 OHMS MAX
TEST VOLTS 2000V RMS
SCHEMATIC



B	1	NOTE ADDED (MIL-T-27-A)	6/25/60	2872	DM	90/15	15
A	1	TMC Added	10/12/53	1	JAG	90/15	15
ISSUE	ITEM	CHANGED FROM	DATE	CN. NO.	DRAFTS	CHECKER	ENG. APP.

TOLERANCES		SCALE: 1/16"
ALL OTHERS	DEC. DIM. ± .005 FRAC. DIM. ± 1/64 ANGULAR DIM. ±	A
DRILL, PUNCH, COMMERCIAL STOCK SIZES AND MANUFACTURERS TOLERANCES ARE NOT INCLUDED.		
MODEL	PROJECT NO.	ASSY. NO.
DATE		
USED ON		

REQ.	ITEM	PART NO.	DESCRIPTION	SYMBOL
			THE TECHNICAL MATERIEL CORP. MAMARONECK, NEW YORK	
STOCK SIZE			REACTOR	
MATERIAL		WEIGHT PER PC.		
TYPE & TEMPER			C.D.D. 12-11-52	G.T.O
HEAT TREAT. SPEC.			DRAWN	ELEC. DES. APP. MECH. DES. APP.
SEE NOTE			MA 12-12-52	FINAL APPROVAL
FINISH & SPEC. NO.			SUPERCEDES B-383-M	TF-5003 B

IF IT IS FOUND DESIRABLE TO CHANGE ANY TOLERANCE OR OTHER DETAIL SPECIFIED ON THIS DRAWING NOTIFY THE PURCHASER PROMPTLY.

MAXIMUM ALLOWABLE TOLERANCES HAVE BEEN DETERMINED AND DEVIATIONS WILL BE CAUSE FOR REJECTION. REMOVE ALL BURRS AND SHARP EDGES

TF-5006 B

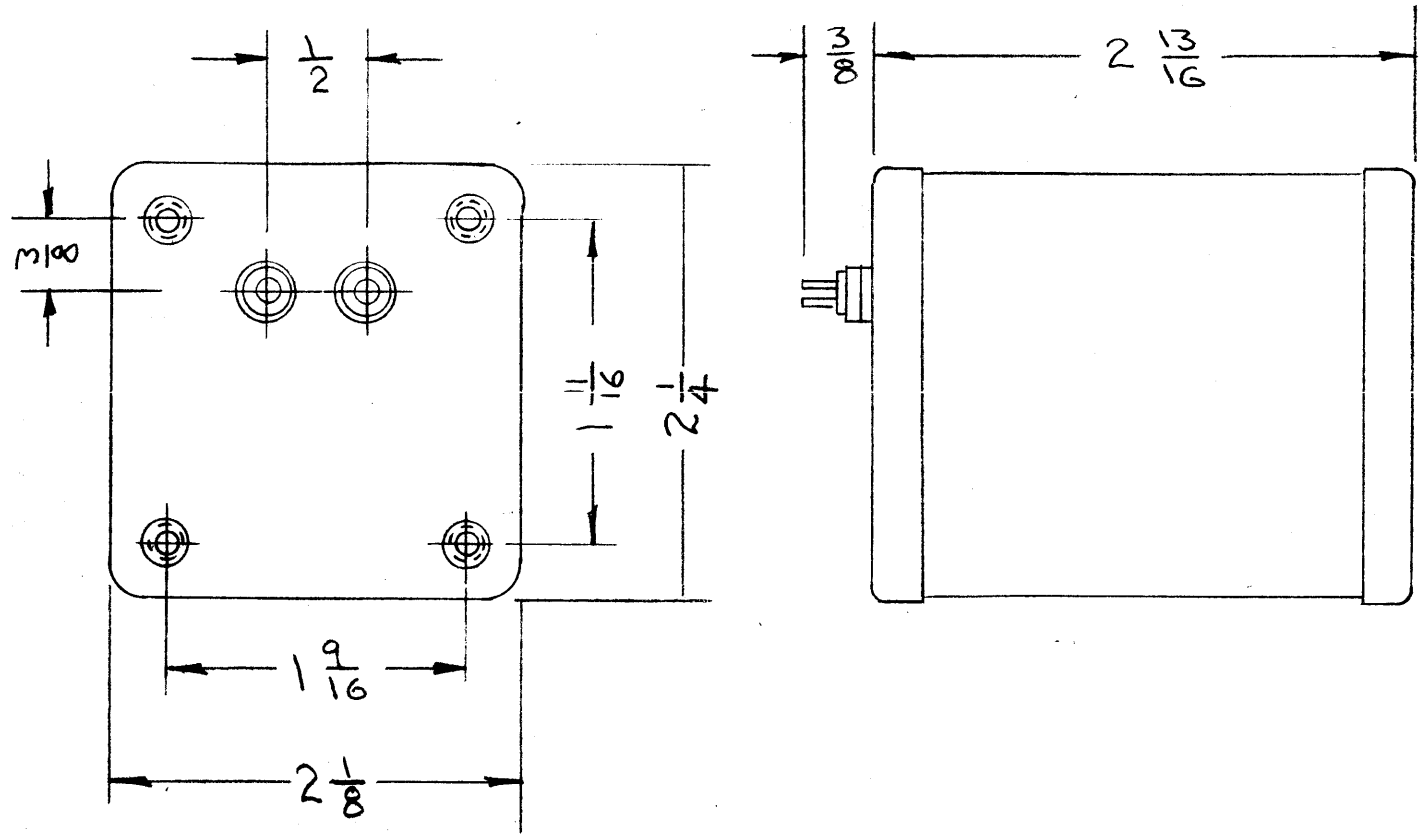
NOTICE TO PERSONS RECEIVING THIS DRAWING

THE TECHNICAL MATERIEL CORPORATION claims proprietary right in the material disclosed hereon. This drawing is issued in confidence for engineering information only and may not be reproduced or used to manufacture anything shown hereon without permission from THE TECHNICAL MATERIEL CORPORATION to the user. This drawing is loaned for mutual assistance and is subject to recall at any time.

Property of:

THE TECHNICAL MATERIEL CORPORATION
MAMARONECK, NEW YORK

REACTOR, FILTER CHOKE; 10 HY MIN., 70 MA; 280 OHMS MAX.
D C RESISTANCE; 1500 V RMS TEST HERMETICALLY SEALED
STEEL CASE; 4 MTG INSERTS THREADED FOR # 6-32 MTG SCREWS;
TWO SOLDER LUG TERMINALS ON BOTTOM;
~~TRANSFORMER TO CONFORM TO SPEC. MIL-T-27 GRADE 1, CLASS~~
~~A; TEST VOLTAGE 1000 V RMS NO. 6-32 STUDS 5/16" ± .010~~
MAY BE SUBSTITUTED FOR MTG. INSERTS.



NOTE: MANUFACTURED IN ACCORDANCE WITH MIL SPEC T-27A EXCEPT THAT MIL SPEC T-27-A SHALL NOT APPEAR ON CASE AND QUALIFICATION TESTING IS NOT REQUIRED

TMC
TF-5006

STAMP TOP AS SHOWN
LETTERING 1/8 HIGH

NOTICE TO PERSONS RECEIVING THIS DRAWING

THE TECHNICAL MATERIEL CORPORATION claims proprietary right in the material disclosed hereon. This drawing is issued in confidence for engineering information only and may not be reproduced or used to manufacture anything shown hereon without permission from THE TECHNICAL MATERIEL CORPORATION to the user. This drawing is loaned for mutual assistance and is subject to recall at any time.

Property of:

THE TECHNICAL MATERIEL CORPORATION
MAMARONECK, NEW YORK

B	1	NOTE ADDED (MIL T-27-A)	6-30-60	2572				
A	1	TMC NO ADDED	10/12/53	1				
ISSUE	ITEM	CHANGED FROM	DATE	CN. NO.	DRAFTS	CHECKER	ENG. APP.	
TOLERANCES		SCALE:						
ALL OTHERS	DEC. DIM. ±	DRILL, PUNCH, COMMERCIAL STOCK						
	FRAC. DIM. ±	SIZES AND MANUFACTURERS						
	ANGULAR DIM. ±	TOLERANCES ARE NOT INCLUDED.						

PS-4A	E-1153P		2-23-62
HFP-1	E-1069P	A-2382-3	2-23-62
SBS-1 Power Supply	E-2630	A-2209-1	2-23-62
SFO-2			
MODEL	PROJECT NO.	ASSY. NO.	DATE

REQ.	ITEM	PART NO.	DESCRIPTION	SYMBOL
			THE TECHNICAL MATERIEL CORP.	
			MAMARONECK, NEW YORK	
			REACTOR, FILTER	
STOCK SIZE				
MATERIAL		WEIGHT PER PC.		
TYPE & TEMPER				
HEAT TREAT. SPEC.				
FINISH & SPEC. NO.				

IF IT IS FOUND DESIRABLE TO CHANGE ANY TOLERANCE OR OTHER DETAIL SPECIFIED ON THIS DRAWING NOTIFY THE PURCHASER PROMPTLY.

MAXIMUM ALLOWABLE TOLERANCES HAVE BEEN DETERMINED AND DEVIATIONS WILL BE CAUSE FOR REJECTION. REMOVE ALL BURRS AND SHARP EDGES

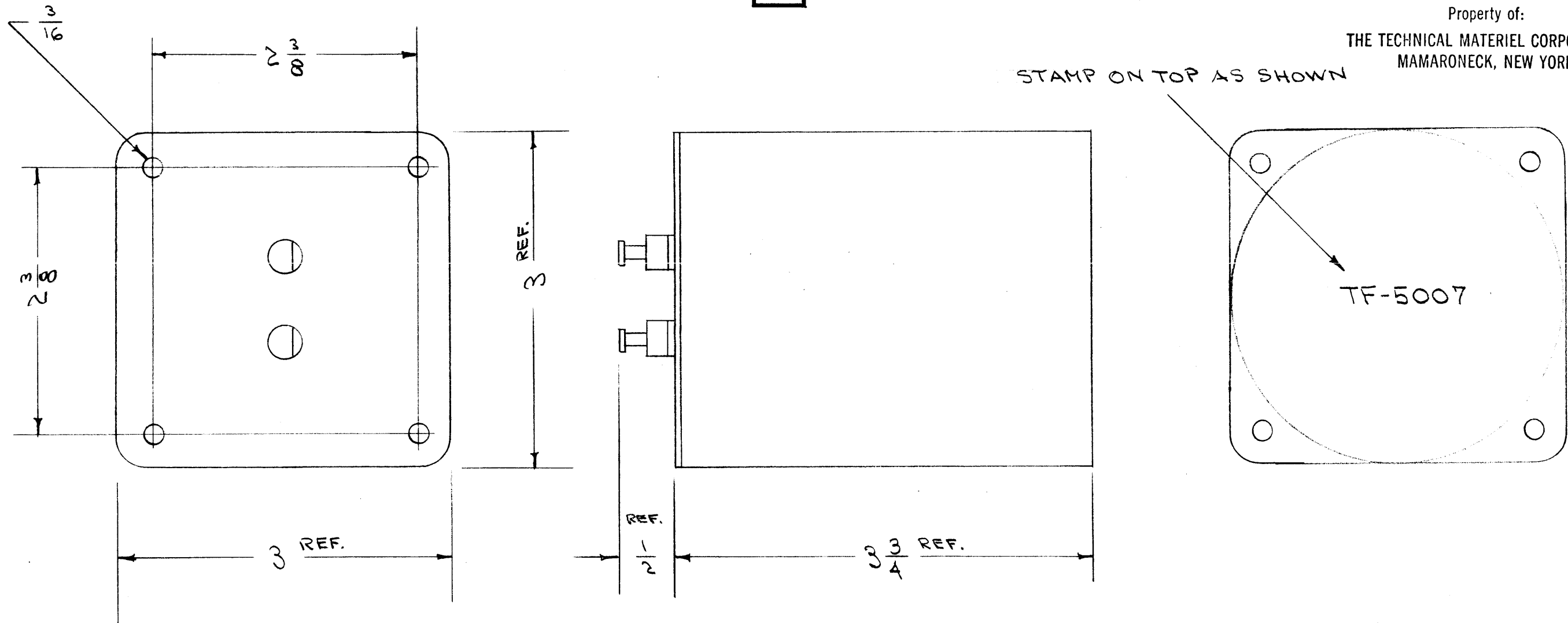
TF-5007 A

20 HYS AT 115 MA. D.C.
 10V 602
 DCR 35AΩ
 W.V. 535V PEAK

NOTICE TO PERSONS RECEIVING THIS DRAWING

THE TECHNICAL MATERIEL CORPORATION claims proprietary right in the material disclosed hereon. This drawing is issued in confidence for engineering information only and may not be reproduced or used to manufacture anything shown hereon without permission from THE TECHNICAL MATERIEL CORPORATION to the user. This drawing is loaned for mutual assistance and is subject to recall at any time.

Property of:
 THE TECHNICAL MATERIEL CORPORATION
 MAMARONECK, NEW YORK



STAMP ON TOP AS SHOWN

TF 1A 04 YY

REQ.	ITEM	PART NO.	DESCRIPTION	SYMBOL
		#	THE TECHNICAL MATERIEL CORP.	
		STOCK SIZE	MAMARONECK, NEW YORK	
		#	REACTOR, FILTER	
		MATERIAL		
		WEIGHT PER PC.		
		#		
		TYPE & TEMPER		
		#		
		HEAT TREAT. SPEC.		
		#		
		FINISH & SPEC. NO.		

ISSUE	ITEM	CHANGED FROM	DATE	CN. NO.	DRAFTS	CHECKER	ENG. APP.
A	1	DRAWING ADDED	12/24	1		c.d.d. <i>AWD</i>	<i>AMB</i>
TOLERANCES		SCALE: 5401-12 (31031-2)					
ALL OTHERS	DEC. DIM. ±	5401-29 (D3550)	DRILL, PUNCH, COMMERCIAL STOCK SIZES AND MANUFACTURERS TOLERANCES ARE NOT INCLUDED.				
	FRAC. DIM. ±						
	ANGULAR DIM. ±						

DMK-4	PROJECT NO.	ASSY. NO.	DATE
			9-A-53

USED ON

IF IT IS FOUND DESIRABLE TO CHANGE ANY TOLERANCE OR OTHER DETAIL SPECIFIED ON THIS DRAWING NOTIFY THE PURCHASER PROMPTLY.

MAXIMUM ALLOWABLE TOLERANCES HAVE BEEN DETERMINED AND DEVIATIONS WILL BE CAUSE FOR REJECTION. REMOVE ALL BURRS AND SHARP EDGES

TF-5008 A

8.5 HYS AT 150 MA. D.C.
 10V 60~
 DCR 150Ω
 W.V. 535V. PEAK

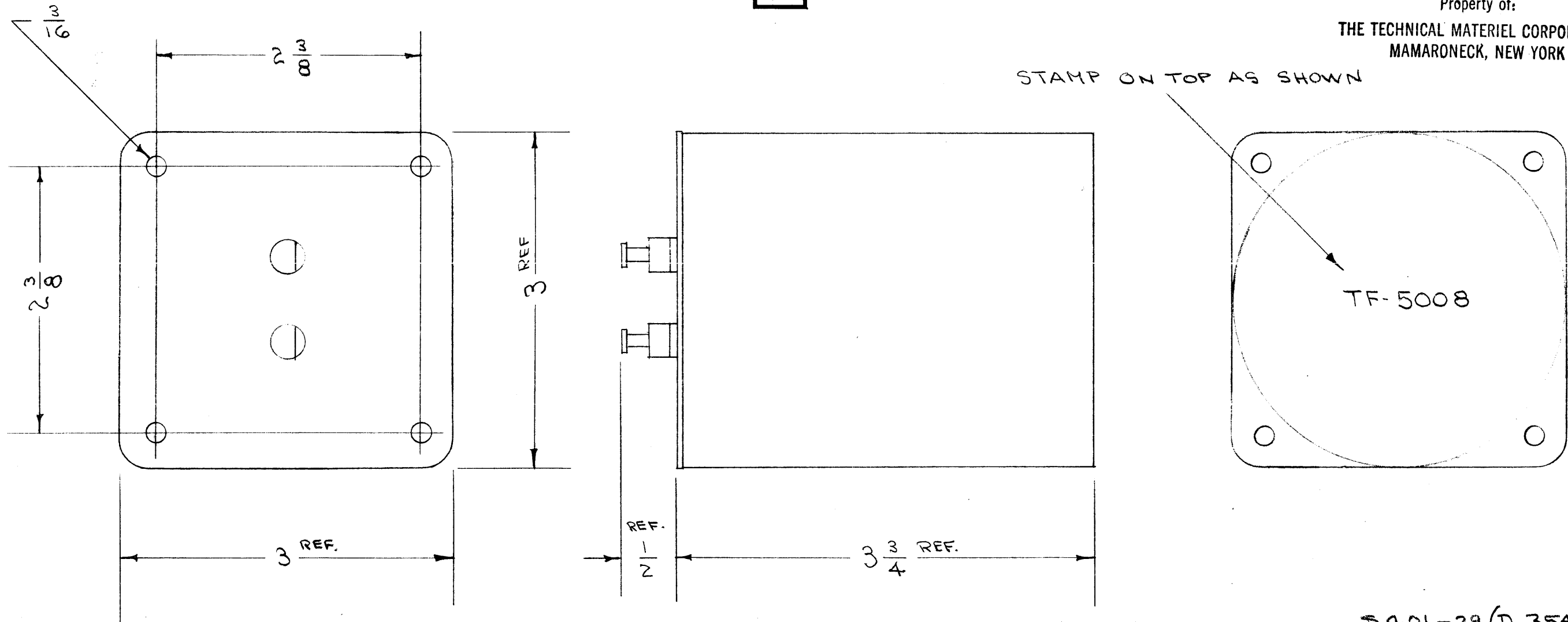
NOTICE TO PERSONS RECEIVING THIS DRAWING

THE TECHNICAL MATERIEL CORPORATION claims proprietary right in the material disclosed hereon. This drawing is issued in confidence for engineering information only and may not be reproduced or used to manufacture anything shown hereon without permission from THE TECHNICAL MATERIEL CORPORATION to the user. This drawing is loaned for mutual assistance and is subject to recall at any time.

Property of:

THE TECHNICAL MATERIEL CORPORATION
 MAMARONECK, NEW YORK

STAMP ON TOP AS SHOWN



5401-29 (D 3549)
 5401-12 (31030-2)
 TF 1A 04 YY.

REQ.	ITEM	PART NO.	DESCRIPTION	SYMBOL
	#		THE TECHNICAL MATERIEL CORP. MAMARONECK, NEW YORK	
	#		REACTOR, FILTER	
	#		C.D.D. 2-25-54	
	#		DRAWN	
	#		CHECKED	
	#		HEAT TREAT. SPEC.	
	#		FINISH & SPEC. NO.	
			FINAL APPROVAL	
			TF-5008	A

ISSUE	ITEM	CHANGED FROM	DATE	CN. NO.	DRAFTS	CHECKER	ENG. APP.
A	1	DRAWING ADDED	2/25/54	1	C.D.D.	Hilde	app

TOLERANCES	SCALE:
DEC. DIM. ± FRAC. DIM. ± ANGULAR DIM. ±	C

REQ. PER. UNIT	MODEL	PROJECT NO.	ASS'Y. NO.	DATE
	DMK-A			9-A-53

IF IT IS FOUND DESIRABLE TO CHANGE ANY TOLERANCE OR OTHER DETAIL SPECIFIED ON THIS DRAWING NOTIFY THE PURCHASER PROMPTLY.

MAXIMUM ALLOWABLE TOLERANCES HAVE BEEN DETERMINED AND DEVIATIONS WILL BE CAUSE FOR REJECTION. REMOVE ALL BURRS AND SHARP EDGES

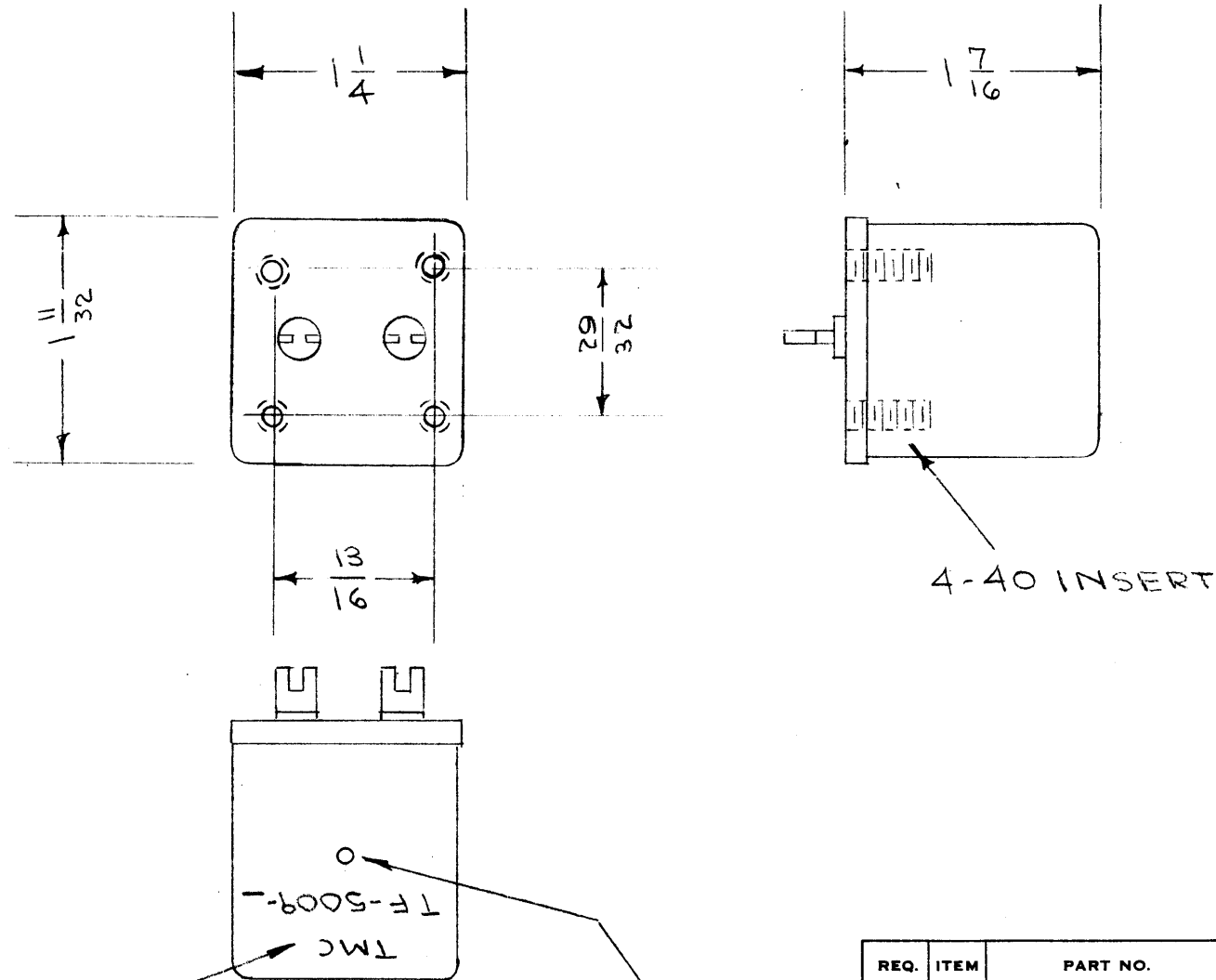
TMC No.	CAT. No.	MEAN HYS.	DC MA
TF-5009-1	V1-C1	.0085	75
-2	V1-C2	.013	60
-3	V1-C3	.021	50
-4	V1-C4	.034	40
-5	V1-C5	.053	35
-6	V1-C6	.084	30
-7	V1-C7	.13	25
-8	V1-C8	.21	21
-9	V1-C9	.34	18
-10	V1-C10	.54	15
-11	V1-C11	.85	12
-12	V1-C12	1.3	10
-13	V1-C13	2.2	8
-14	V1-C14	3.4	7
-15	V1-C15	5.4	6
-16	V1-C16	8.5	5
-17	V1-C17	13.0	4
-18	V1-C18	21.0	3.5
-19	V1-C19	33.0	3
-20	V1-C20	52.0	2
-21	V1-C21	83.0	1.5
-22	V1-C22	130.0	1

TF-5009

NOTICE TO PERSONS RECEIVING THIS DRAWING

THE TECHNICAL MATERIEL CORPORATION claims proprietary right in the material disclosed hereon. This drawing is issued in confidence for engineering information only and may not be reproduced or used to manufacture anything shown hereon without permission from THE TECHNICAL MATERIEL CORPORATION to the user. This drawing is loaned for mutual assistance and is subject to recall at any time.

Property of:
THE TECHNICAL MATERIEL CORPORATION
 MAMARONECK, NEW YORK



INDUCTANCE VARIANCE FROM MEAN - +85% - -45%

STAMP AS SHOWN

ADJUSTMENT HOLE

ISSUE	ITEM	CHANGED FROM	DATE	CN. NO.	DRAFTS	CHECKER	ENG. APP.	
TOLERANCES							SCALE: 5/16-30	
ALL OTHERS	DEC. DIM. ± FRAC. DIM. ± ANGULAR DIM. ±		C					DRILL, PUNCH, COMMERCIAL STOCK SIZES AND MANUFACTURERS TOLERANCES ARE NOT INCLUDED.

MODEL	PROJECT NO.	ASS'Y. NO.	DATE
USED ON			

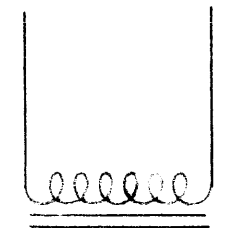
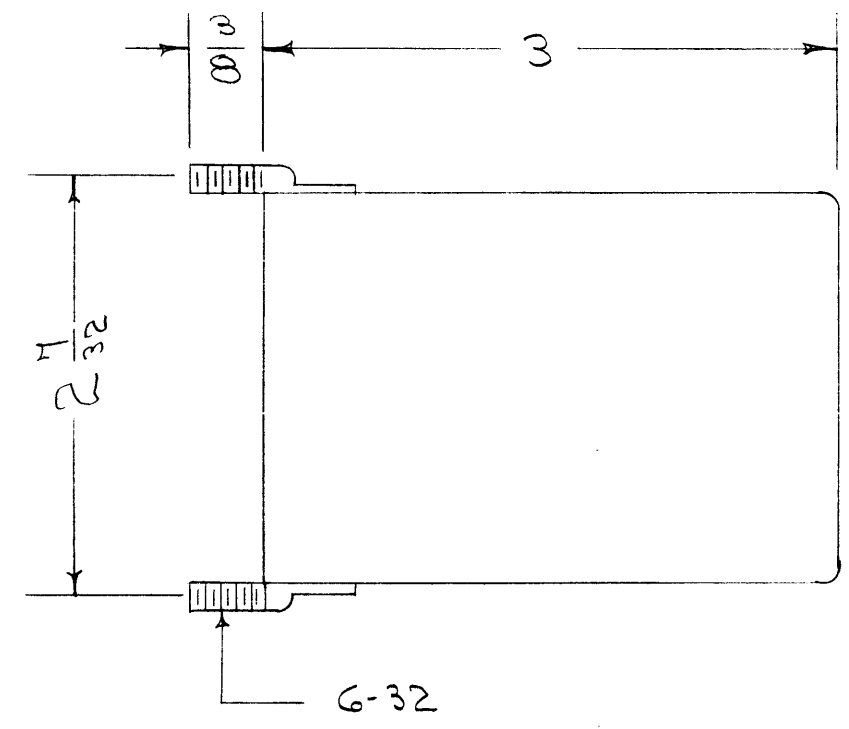
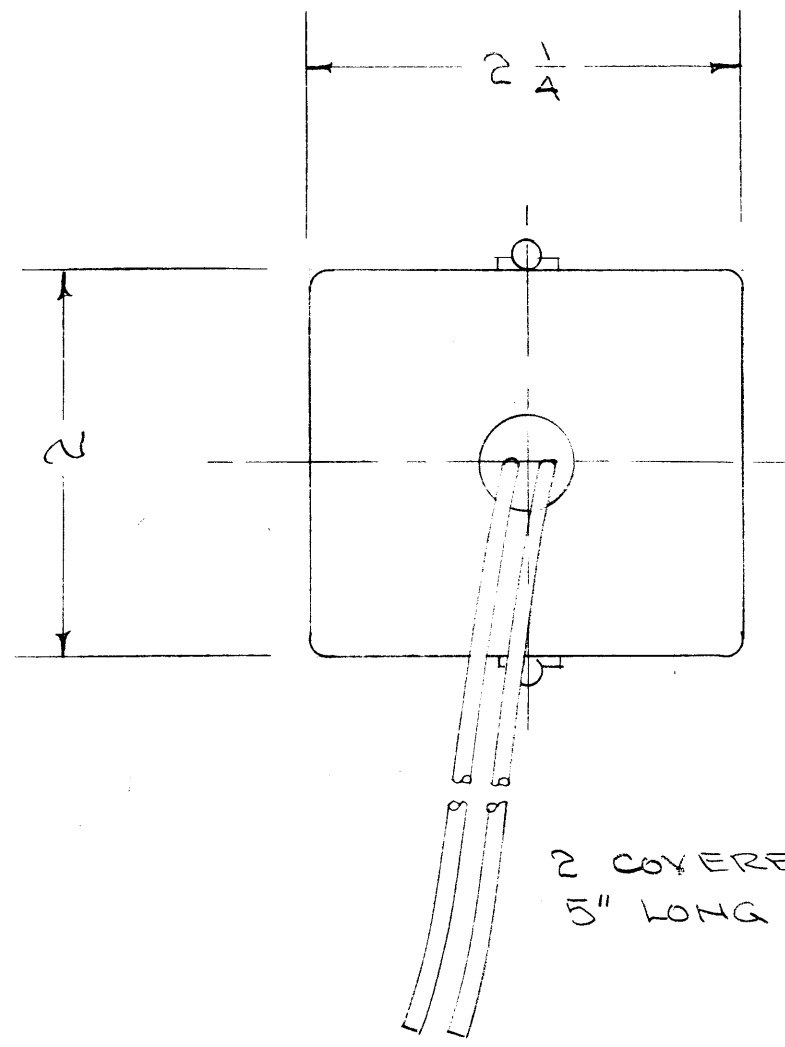
REQ.	ITEM	PART NO.	DESCRIPTION	SYMBOL
	#		THE TECHNICAL MATERIEL CORP. MAMARONECK, NEW YORK	
	#	#	INDUCTOR, VARIABLE	
			CDD 11/19/53	ARB
			JAD 11/19/53	ARB
			FINAL APPROVAL	
			TF-5009	

TF-5010 Ø

PROPERTY OF USER'S ROUTING THIS DRAWING

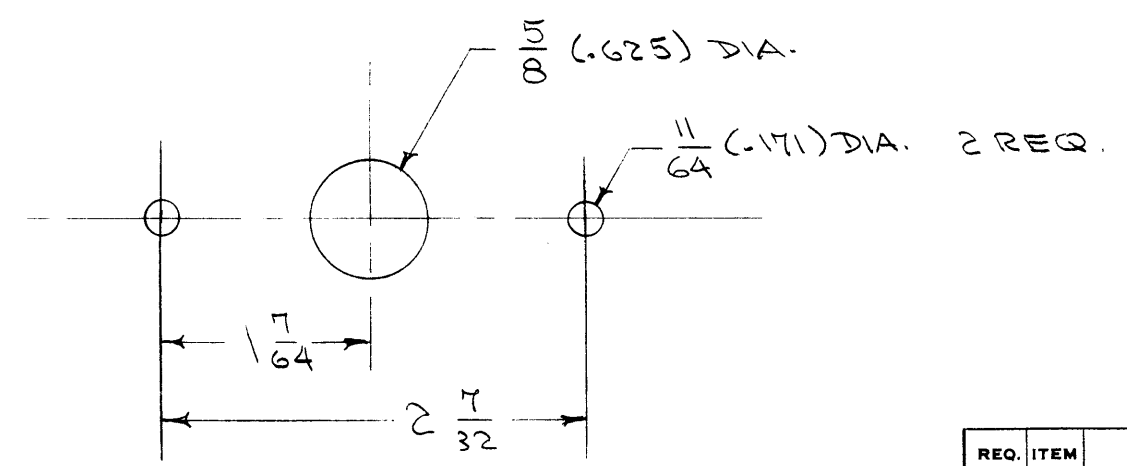
THE TECHNICAL MATERIEL CORPORATION claims copyright in this drawing and is not to be reproduced or used for any purpose other than that for which it was prepared. This drawing is issued for your use for engineering information only and may not be reproduced or used to manufacture anything shown hereon without permission from THE TECHNICAL MATERIEL CORPORATION to the user. This drawing is loaned for mutual assistance and is subject to recall at any time.

Property of:
THE TECHNICAL MATERIEL CORPORATION
MAMARONECK, NEW YORK



5.4 TO 6.4 HYS.

D.C. RESISTANCE 300 Ω
CURRENT CAPACITY 60 ma.
INSULATION TEST 2500 volts

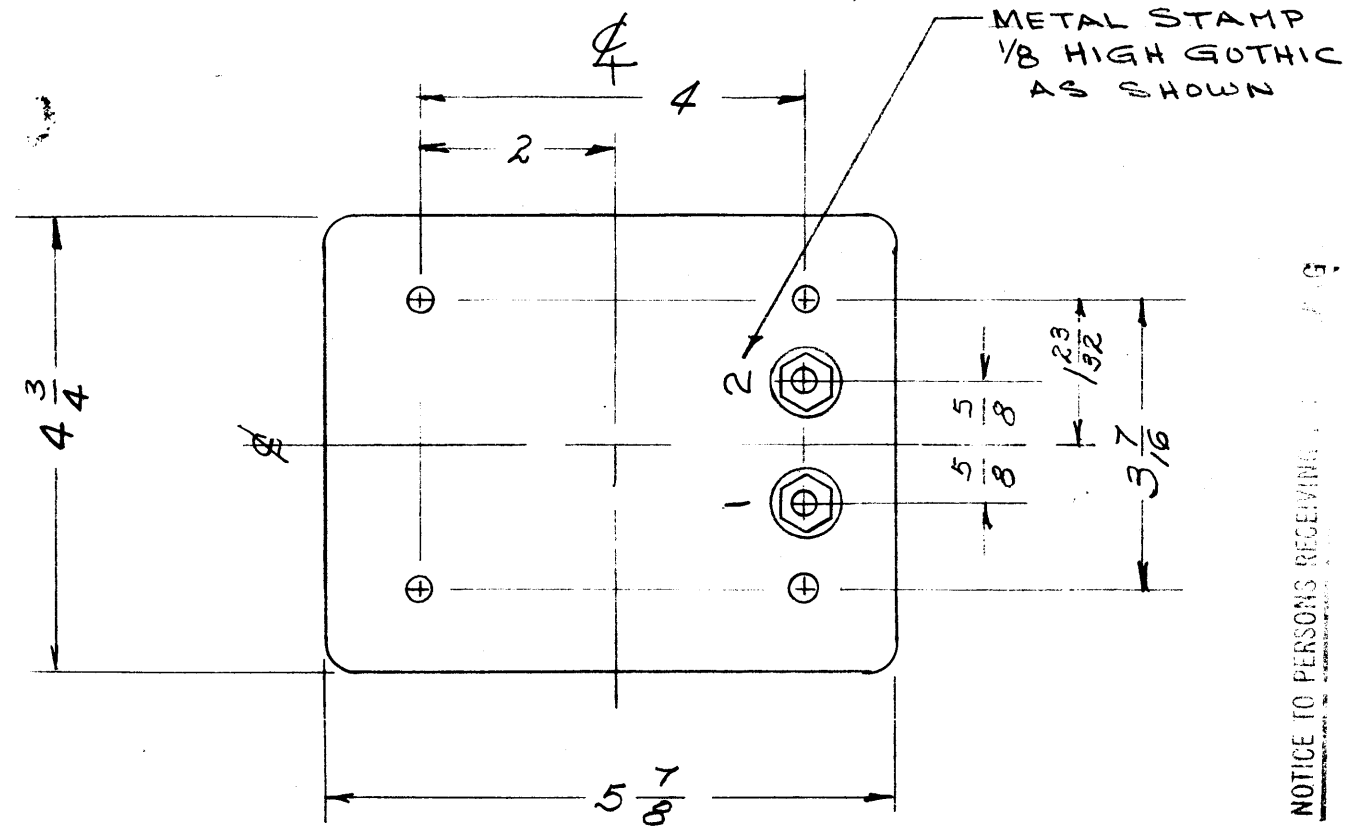


Ø	ORIGINAL RELEASE	3/4/69	W			
ISSUE	ITEM	CHANGED FROM	DATE	CH. NO.	DRAFTS	CHECKER
TOLERANCES		SCALE:				
DEC. DIM. ±	MAXIMUM ALLOWABLE TOLERANCES HAVE BEEN DETERMINED AND ANY DEVIATIONS WILL BE CAUSE FOR REJECTION.					
FRAC. DIM. ±	REMOVE ALL BURRS AND SHARP EDGES					
ANGULAR DIM. ±	A					

REQ. PER UNIT	MODEL	PROJECT NO.	ASS'Y. NO.	DATE
USED ON				

REQ. ITEM	PART NO.	DESCRIPTION	SYMBOL
		THE TECHNICAL MATERIEL CORP. MAMARONECK, NEW YORK	
		STOCK SIZE	
		FILTER CHOKE	
		MATERIAL	
		CSO. 5/16/69	ASB 8/14/69
		TYPE & TEMPER	HEAT TREAT. SPEC.
		DRAWN	CHECKED
		FINAL APPROVAL	
		TF-5010 Ø	
		FINISH & SPEC. NO.	ELEC. DES. APP. MECH. DES. APP.

TF-5012 G

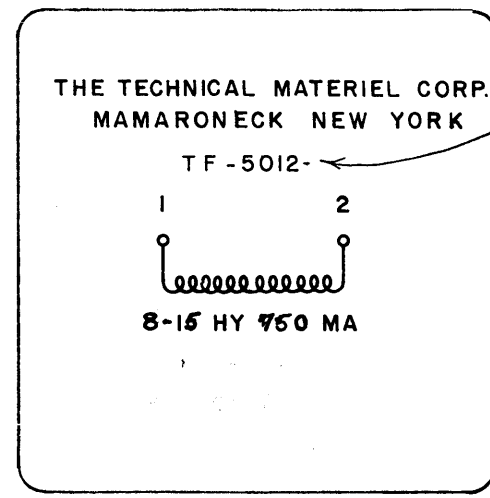


ELECTRICAL SPECIFICATIONS:

INDUCTANCE - 8 HY @ 750 MA, 15 HY @ 100 MA
 D.C. RESISTANCE - APPROX. 42 Ω
 INSULATION BREAKDOWN TEST VOLTAGE 10,000 VOLTS

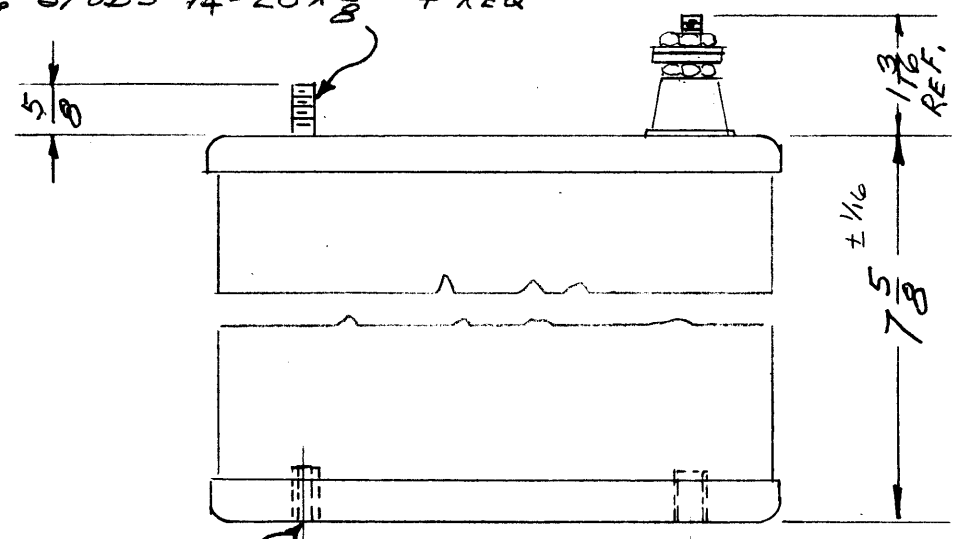
NOTICE TO PERSONS RECEIVING THIS DRAWING:
 THE TECHNICAL MATERIEL CORP. PROPRIETARY RIGHTS RESERVED. THIS DRAWING IS THE PROPERTY OF THE TECHNICAL MATERIEL CORP. AND IS LOANED TO YOU FOR YOUR INFORMATION ONLY. IT IS NOT TO BE REPRODUCED OR TRANSMITTED IN ANY FORM OR BY ANY MEANS, ELECTRONIC OR MECHANICAL, INCLUDING PHOTOCOPYING, RECORDING, OR BY ANY INFORMATION STORAGE AND RETRIEVAL SYSTEM, WITHOUT THE WRITTEN PERMISSION OF THE TECHNICAL MATERIEL CORP. THIS DRAWING IS THE PROPERTY OF THE TECHNICAL MATERIEL CORP. AND IS LOANED TO YOU FOR YOUR INFORMATION ONLY. IT IS NOT TO BE REPRODUCED OR TRANSMITTED IN ANY FORM OR BY ANY MEANS, ELECTRONIC OR MECHANICAL, INCLUDING PHOTOCOPYING, RECORDING, OR BY ANY INFORMATION STORAGE AND RETRIEVAL SYSTEM, WITHOUT THE WRITTEN PERMISSION OF THE TECHNICAL MATERIEL CORP.

Property of:
 THE TECHNICAL MATERIEL CORPORATION
 MAMARONECK, NEW YORK



MARK TMC PT. NO. W/LATEST REVISION LETTER.
 NOTE SCHEMATIC DIAGRAM TO APPEAR ON END OPPOSITE TERMINAL END
 COLOR - BLACK

MOUNTING STUDS 1/4-20 X 5/8 4 REQ



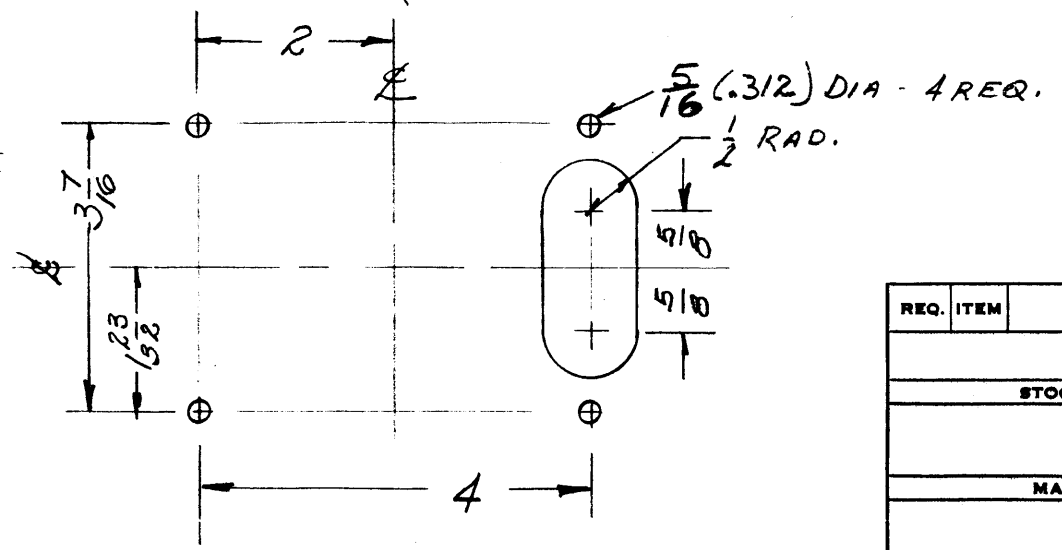
MECHANICAL SPECIFICATIONS:

CASE - HERMETICALLY SEALED RECTANGULAR STEEL CASE
 FINISH - S-115 TMC SMOOTH GRAY ENAMEL, EXCEPT TERMINAL END.
 SIZE - 5 1/4 X 5 7/8 X 7 5/8 HIGH; EXCLUSIVE OF TERMINALS
 POTTING COMPOUND - SAND & WAX

NOTE: MANUFACTURED IN ACCORDANCE WITH MIL SPEC T-27-A EXCEPT THAT MIL SPEC T-27-A SHALL NOT APPEAR ON CASE AND QUALIFICATION TESTING IS NOT REQUIRED.

INSERTS 1/4-20 X 1/2 DEEP 4 REQ
 (SEE DRILLING PLAN FOR INSERT LAYOUT)

DRILLING PLAN

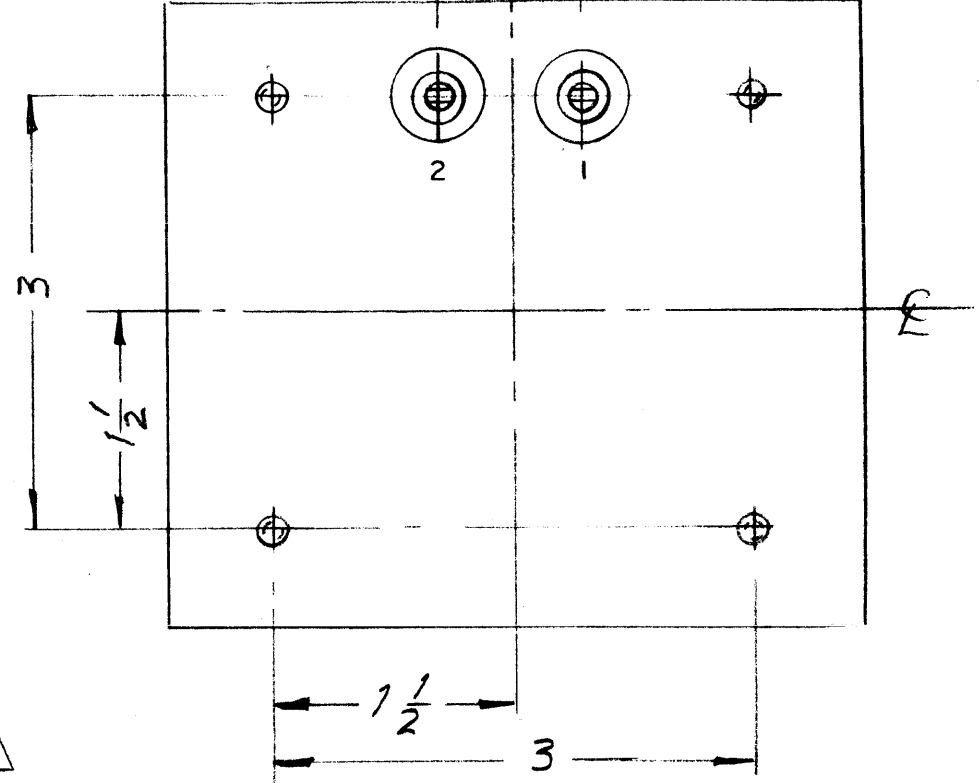
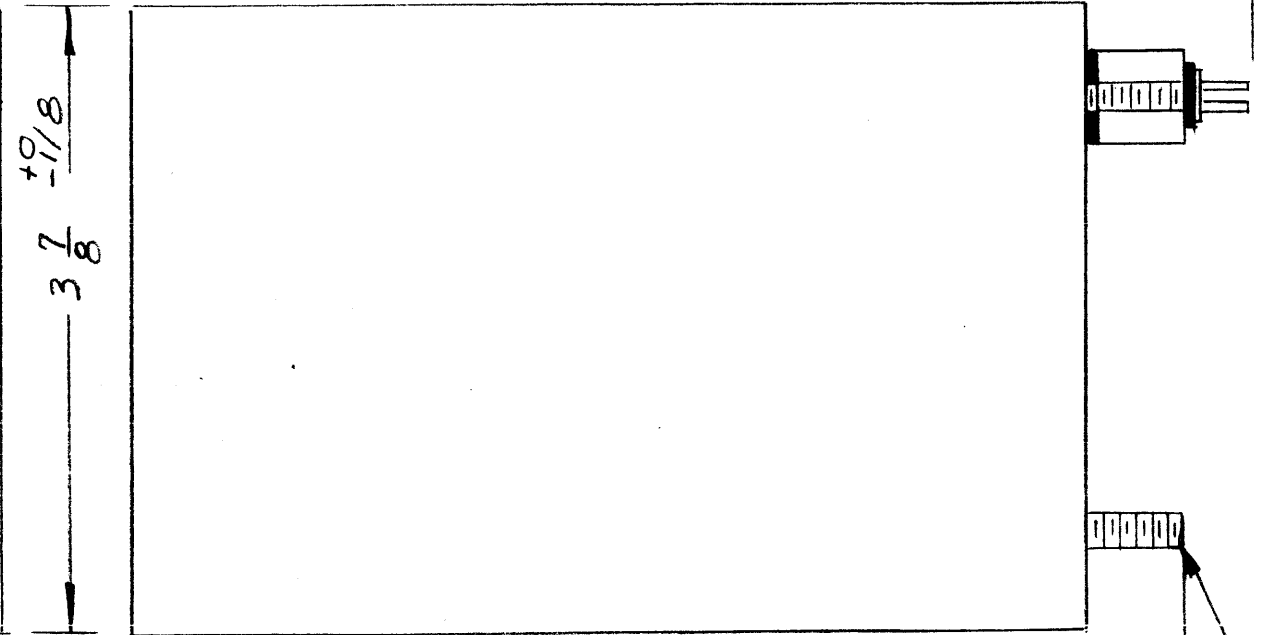
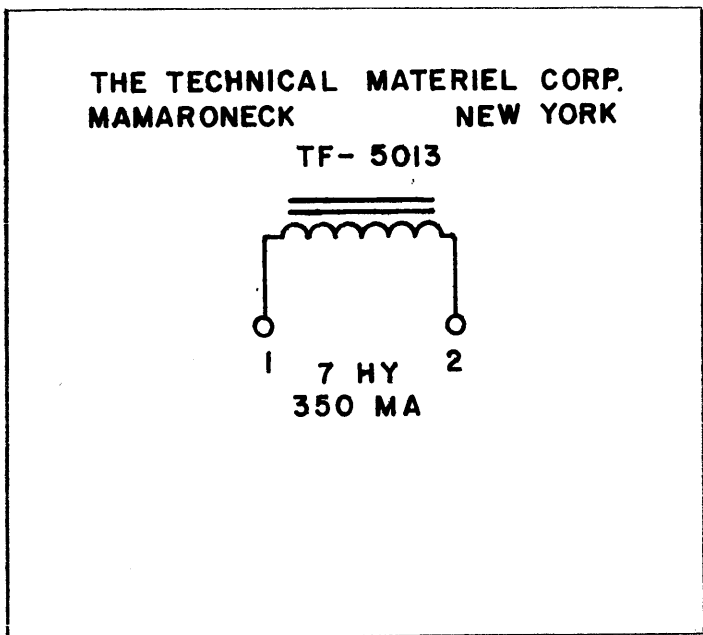


ISSUE	ITEM	CHANGED FROM	DATE	CH. NO.	DRAFTS	CHECKER	ENG. APP.
G		ADD TMC PT. NO. REV. NOTE	11/10/66	CC	RME	[Signature]	[Signature]
F	1	POTTING COMPOUND ADD. TO SPECS.	4-15-65	13889	gl.	[Signature]	[Signature]
E	1	SEE EMN #10903	2/14/64	10903	A.M.	T.R.	[Signature]
TOLERANCES			SCALE: 2-1247				
DEC. DIM. ±			MAXIMUM ALLOWABLE TOLERANCES HAVE BEEN DETERMINED AND ANY DEVIATIONS WILL BE CAUSE FOR REJECTION. REMOVE ALL BURRS AND SHARP EDGES				
FRAC. DIM. ± 1/64							
ANGULAR DIM. ±							

REQ. PER UNIT	MODEL	PROJECT NO.	ASS'Y. N.	DATE
1	RTP-2			
USED ON				

REQ. ITEM	PART NO.	DESCRIPTION	SYMBOL
		THE TECHNICAL MATERIEL CORP. MAMARONECK, NEW YORK	
		REACTOR, FILTER	
		SWINGING	
		TYPE & TEMPER	HEAT TREAT. SPEC.
		FINISH & SPEC. NO.	
		DRAWN	CHECKED
		ELEC. DES. APP.	MECH. DES. APP.
		FINAL APPROVAL	
		A.J.S.	
		TF-5012 G	

TF-5013 B



ELECTRICAL SPECIFICATIONS:

INDUCTANCE 7 Henries at full current rating.
DC CURRENT RATING 350 MA
DC RESISTANCE Approx. 55 ohms.
INSULATION Winding to be insulated for 2000 V.

MECHANICAL SPECIFICATIONS:

CASE Rectangular, steel MIL Type YY, Hermetically sealed.
FINISH TMC Smooth Grey Enamel (S-115), except terminal end.
SIZE 3-7/8 X 3-7/8 X 4-7/8, High, excluding studs and terminals.
STAMPING Terminals shall be metal stamped 1 and 2 as shown. Opposite end shall be rubber stamped in black as shown.

NOTE: MANUFACTURED IN ACCORDANCE WITH MIL SPEC T-27-A EXCEPT THAT MIL SPEC T-27-A SHALL NOT APPEAR ON CASE AND QUALIFICATION TESTING IS NOT REQUIRED.

REV	ITEM	CHANGED FR	M	DATE	CH. NO.	DRAFTS	CHECKER	ENG. APP.
B	1	NOTE ADDED (MIL T-27-A)		6-30-60	2572			
A	1	2000V WAS 5000V		4-20-60	2161		JCB	

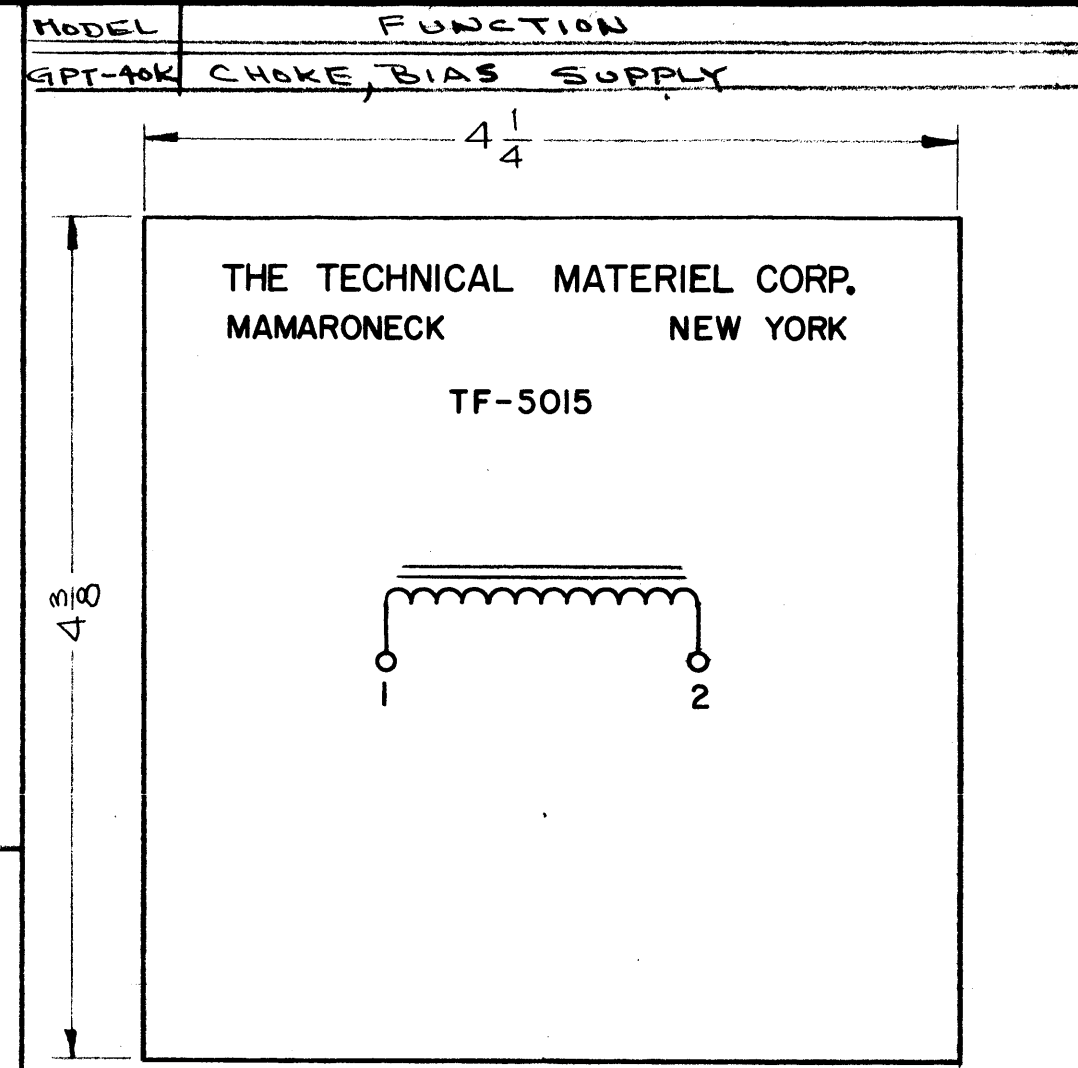
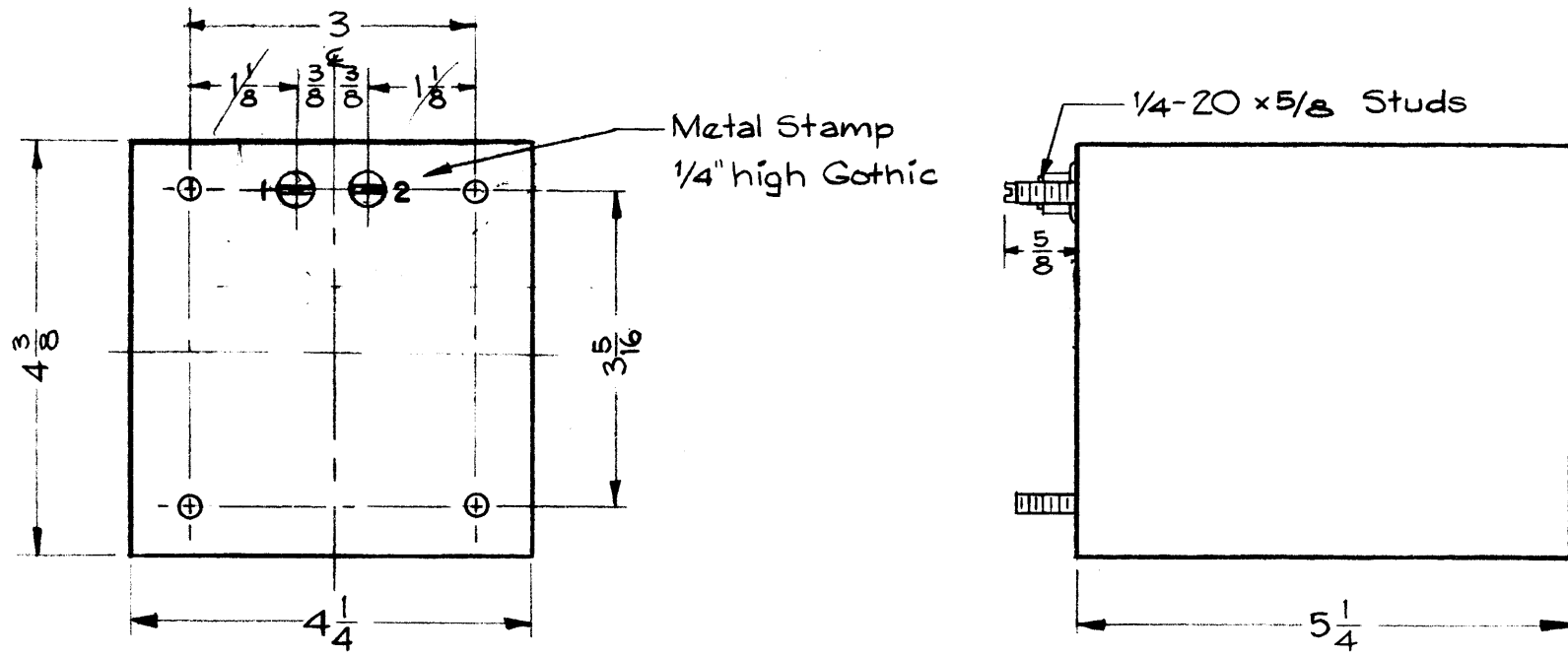
TOLERANCES		SCALE:	
DIM. ±	A	MAXIMUM ALLOWABLE TOLERANCES HAVE BEEN DETERMINED AND ANY DEVIATIONS WILL BE AU E FOR REJECTION: REM VE ALL BURRS AND SHARP EDGES	
2. DIM. ±			
MILAR DIM. ±			

REQ. PER UNIT	CPP-2	E-1047-1	9-9-59
MODEL	PROJECT NO.	ASSY. NO.	DATE
USED ON			

REF: ELECTRIC THERMOMETER CO., PG. 2061

REQ.	ITEM	PART NO.	DESCRIPTION	YMBOL
			THE TECHNICAL MATERIEL CORP. MAMARONECK, NEW YORK	
			REACTOR, 7 HENRY, 350 MA	
			MATERIAL	
			TYPE & TEMPER	
			HEATTREAT. SPEC.	
			DRAWN	
			CHECKED	
			ENGR. APPR. VAL	
			TF-5013	B
			ELEG. DES. APP	
			MECH. DES. APP	

TF-5015 A



NOTE: MANUFACTURED IN ACCORDANCE WITH MIL SPEC T-27-A EXCEPT THAT MIL SPEC T-27-A SHALL NOT APPEAR ON CASE AND QUALIFICATION TESTING IS NOT REQUIRED.

~ ELECTRICAL SPECIFICATION ~
 Inductance: 7Hy at 400 MA
 Insulation: 3KV
 Test Voltage: 2.5 KV

~ MECHANICAL SPECIFICATION ~
 Case: Rectangular, Steel, MIL Type YY, Hermetically Sealed.
 Finish: TMC Smooth Gray Enamel (TMCS-115) Except terminal end.
 Size: 4 1/4 x 4 3/8 x 5 1/4 high, Excluding terminals & studs.
 Stamping: Terminals Shall be metal stamped 1 & 2 as shown. Opposite end shall be stamped in Black as shown. (See Stamping Detail).

Stamping Detail
 Black Gothic

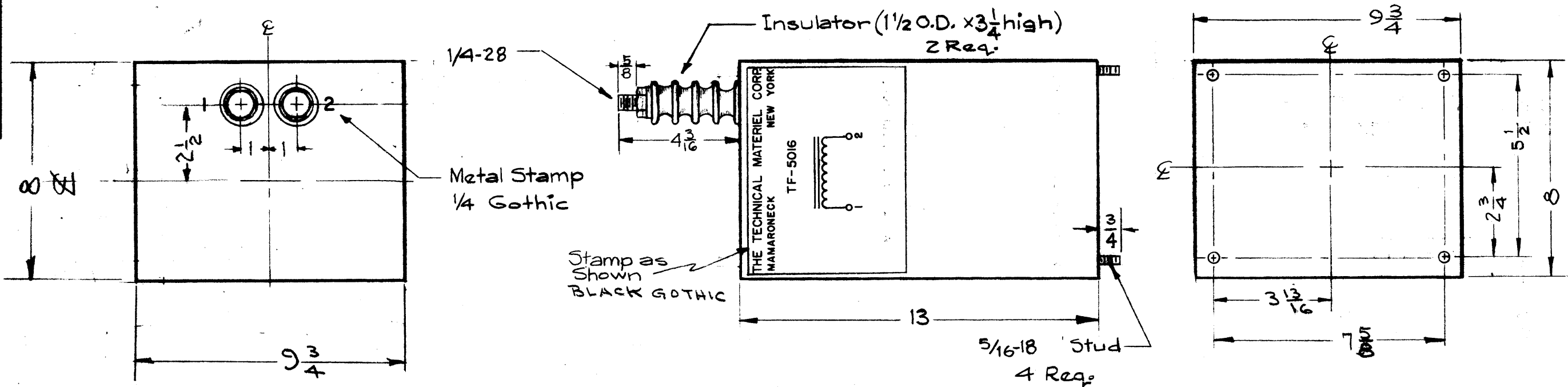
IS USE ITEM	CHANGED FROM	DATE	CH. NO.	DRAFTS	CHECKER	ENG. APP.
A 1	NOTE ADDED (MIL T-27-A)	6-30-60	2572		JCB	VB
TOLERANCES		SCALE:				
DEC. DIM. ±		MAXIMUM ALLOWABLE TOLERANCES HAVE BEEN DETERMINED AND ANY DEVIATIONS WILL BE CAUSE FOR REJECTION: REMOVE ALL BURRS AND SHARP EDGES				
FRAC. DIM. ±						
ANGULAR DIM. ±						

REQ. PER UNIT	1	MODEL	GPT-40K	PROJECT NO.		ASSY. N.		DATE	12-21-59
USED ON									

REG. ITEM	PART NO.	DESCRIPTION	SYMBOL
		THE TECHNICAL MATERIEL CORP. MAMARONECK, NEW YORK	
STOCK SIZE		REACTOR, FILTER	
MATERIAL		7 HENRY, 400 MA	
TYPE & TEMPER	HEATTREAT. SPEC.	DRAWN	CHECKED
		12-21-59	
FINISH & SPEC. NO.		ELEC. DES.	MECH. DES. APP.
		TF-5015	A

TF-5016 E

MODEL	FUNCTION
GPT-40K	FILTER CHOKE, H.V.



NOTE: MANUFACTURED IN ACCORDANCE WITH MIL SPEC T-27-A EXCEPT THAT MIL SPEC T-27-A SHALL NOT APPEAR ON CASE AND QUALIFICATION TESTING IS NOT REQUIRED.

— ELECTRICAL SPECIFICATIONS —
 Inductance : 0.4 Hy at 4.5 Amps DC
 Insulation : for 25,000 Volts

— MECHANICAL SPECIFICATIONS —
 Case : Rectangular, Steel, MIL Type YY hermetically Sealed.
 Size : $8 \times 9\frac{3}{4} \times 13$, Excluding Studs & Terminals.
 Finish : TMC Smooth Gray Enamel (TMC S-115) Except terminal end.
 Stamping : Terminals shall be metal stamped 1#2 as shown.

E	1	STUD WAS 1/2 LONG	8.8.64	12070	WJB	NO.	20
D	1	DIMS - 13 WAS 4, 5/16 WAS 3/16	3-15-63	8575	RC	NO.	10
C	1	NOTE ADDED (MIL T-27-A)	6-30-60	2572	NO.	NO.	10
B	2	1/2 WAS 1	2/12-60	-	WJB	NO.	20
B	1	1/4-28 WAS 1/4-20	-	-	-	-	-
A	1	5/16-18 Studs were 1/2-18	1/12/60	1753	J.C.B.	NO.	20

DEC. DIM. ±	A	MAXIMUM ALL WABLE TOLERANCES HAVE BEEN DETERMINED AND ANY DEVIATIONS WILL BE CAUSE FOR REJECTION. REMOVE ALL BURR AND SHARP EDGES
FRAC. DIM. ±		
ANGULAR DIM. ±		

REQ. PER UNIT	GPT-40K	PROJECT NO.	AS Y. NO.	DATE
				12-21-59

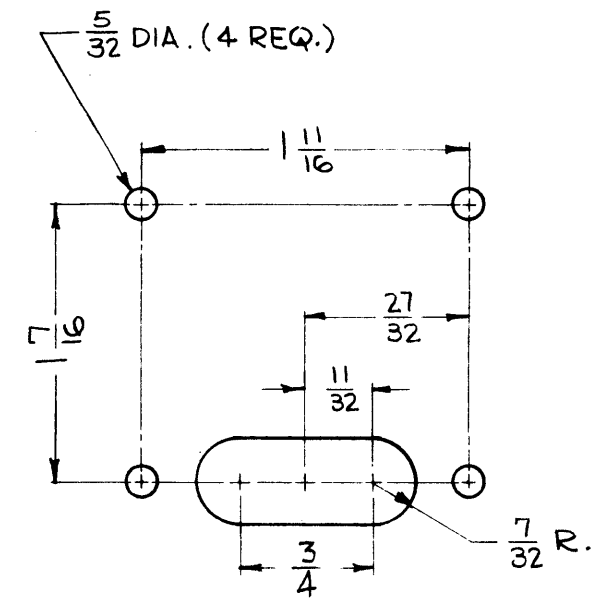
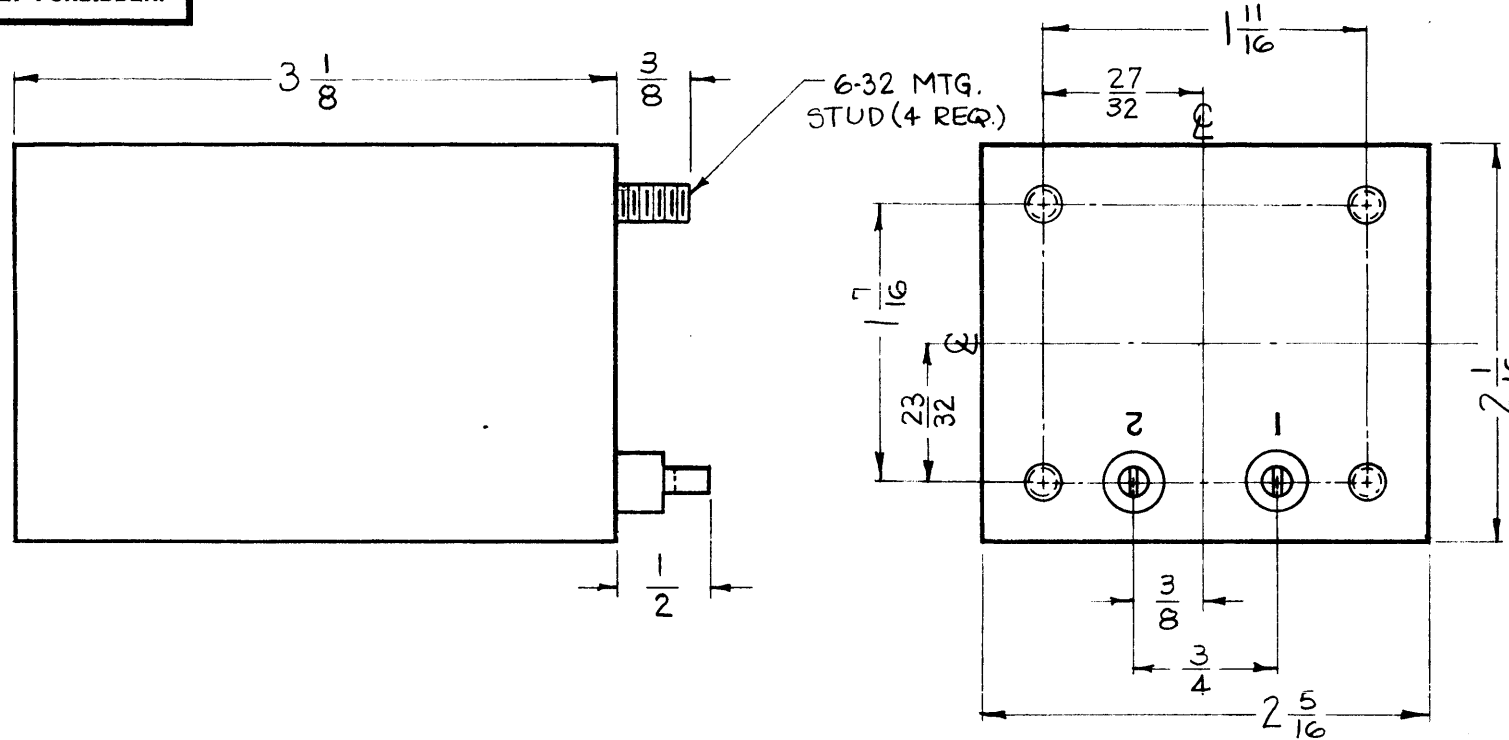
REQ.	ITEM	PART NO.	DESCRIPTION	SYMBOL
			THE TECHNICAL MATERIEL CORP. MAMARONECK, NEW YORK	
			REACTOR, FILTER	
			MATERIAL	
			TYPE TEMPER HEATTREAT. SPEC.	
			FINISH & SPEC. NO.	
			DR. MAN 12-21-59	20
			TF-5016	E.

THE CONTENTS OF THIS DRAWING ARE THE EXCLUSIVE PROPERTY OF THE TECHNICAL MATERIEL CORP. ITS UNAUTHORIZED USE OR REPRODUCTION IN WHOLE OR IN PART IS STRICTLY FORBIDDEN.

TF-5017

THE TECHNICAL MATERIEL CORPORATION
MAMARONECK, NEW YORK
TF-5017

8 HY
160 MA



MOUNTING DETAIL

S P E C I F I C A T I O N S

STAMPING -

TERMINALS SHALL BE METAL STAMPED 1-2 AS SHOWN.
SCHEMATIC DIAGRAM TO BE PLACED ON END OPPOSITE TERMINAL END, AS SHOWN.
BLACK GOTHIC LETTERING AND LINE WORK.

INDUCTANCE - 8 hy AT 160 MADC AT 120 cps

MAXIMUM DC CURRENT - 160 MA

DC RESISTANCE NOMINAL - 180 OHMS

INSULATION TEST VOLTAGE - 1500 V DC

CASE - RECTANGULAR STEEL, HERMETICALLY SEALED

FINISH - S-115 TMC SMOOTH GRAY ENAMEL (EXCEPT STUD END)

DIMENSIONS - SHOWN PICTORIALY

TERMINALS - SOLDER LUG TYPE, CERAMIC STANDOFF

NOMINAL AMBIENT TEMPERATURE 50°C.

NOTE: MANUFACTURED IN ACCORDANCE WITH MIL SPEC T-27-A, EXCEPT THAT MIL SPEC T-27-A SHALL NOT APPEAR ON CASE AND QUALIFICATION TESTING IS NOT REQUIRED.

SYM	DESCRIPTION	DATE	CH. NO.	DRAFTS	CHECKER	ENG. APP.
UNLESS OTHERWISE SPECIFIED:						
DIMENSIONS ARE IN INCHES		SCALE: FULL				
TOLERANCES ON FRACTIONS ± 1/64 DECIMALS ± .005 ANGLES ± 1/2°		MAXIMUM ALLOWABLE TOLERANCES HAVE BEEN DETERMINED AND ANY DEVIATIONS WILL BE CAUSE FOR REJECTION. REMOVE ALL BURRS AND SHARP EDGES				

REQ. PER UNIT	MODEL	SECTION	ASS'Y. NO.	DATE
1	TTR-10	PWR SUPPLY	AX-413	6-6-63
2	LFA-4			4-30-63

USED ON

REQ.	ITEM	PART NO.	O. POSE	DESCRIPTION	R. KOHN	SYMBOL
THE TECHNICAL MATERIEL CORP. MAMARONECK, NEW YORK						
REACTOR						
MATERIAL						
TYPE & TEMPER			HEAT TREAT. SPEC.		DRAWN CHECKED	
FINISH & SPEC. NO.			ELEC. DES. APP.		MECH. DES. APP.	

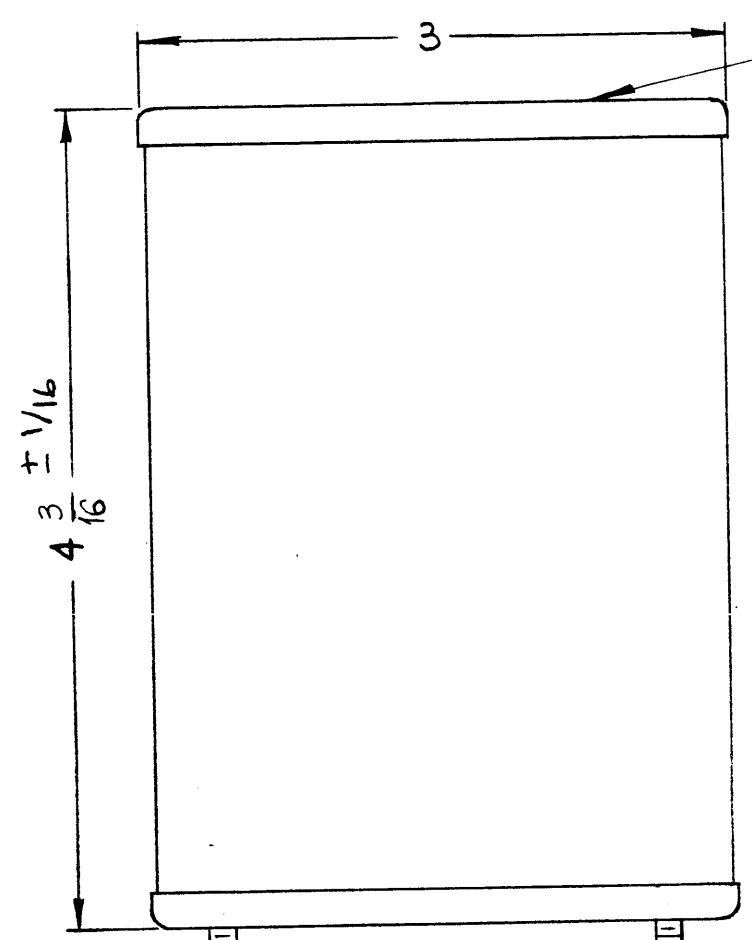
Handwritten signatures and dates: R. KOHN 6/6/63, BP, 6/6/63

Final Approval: TF-5017

TF5020 A

REVISIONS

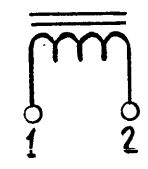
SYM	DESCRIPTION	DATE	E.M.N. NO.	DRAFT	CHKD	APPD
X	EXPERIMENTAL RELEASE	2-26-65		HLA	J.M	
Ø	ORIGINAL RELEASE FOR PRODUCTION	3-11-65	-M-	HLA	V.M	
A	± 1/16 TOL. ADD. TO DIM. 4-3/16.	4-19-65	13839	XL	JOB	



TO BE PLACED ON TOP OF TRANSFORMER

THE TECHNICAL MATERIEL CORPORATION
MAMARONECK NEW YORK

TF5020



CASE DATA:

- A. HERMETICALLY SEALED
- B. FULLY ENCLOSED
- C. GRAY
- D. MATERIAL: STEEL, HOT TIN DIPPED

OVER ALL WINDING DATA

- A. 1 AMP @ 35 MH, 3MH @ 6 AMP
- B. 50/60 CPS
- C. SINGLE

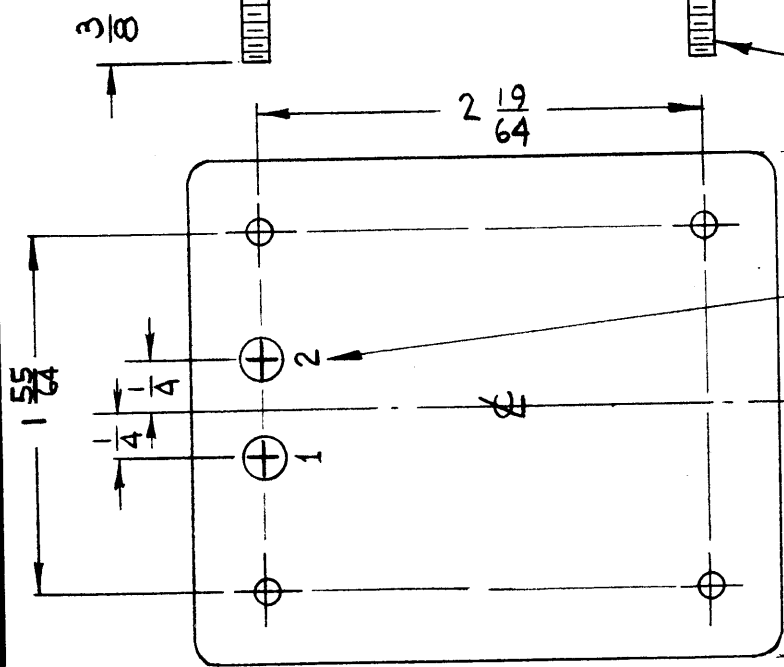
TAP DATA:

- A. QUANTITY 2
- B. 1.0 AMP @ 35MH, 3MH @ 6 AMP

TERMINAL DATA:

- A. QUANTITY 2

MARKING: SCHEMATIC TO BE STAMPED IN BLACK, LETTERING GOTHIC, AS PER TMC SPEC. S-727 LOCATED AS SHOWN.



8-32 STUD - 4 REQ.

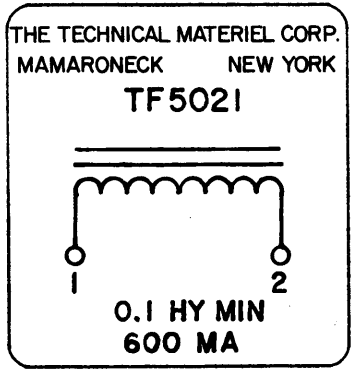
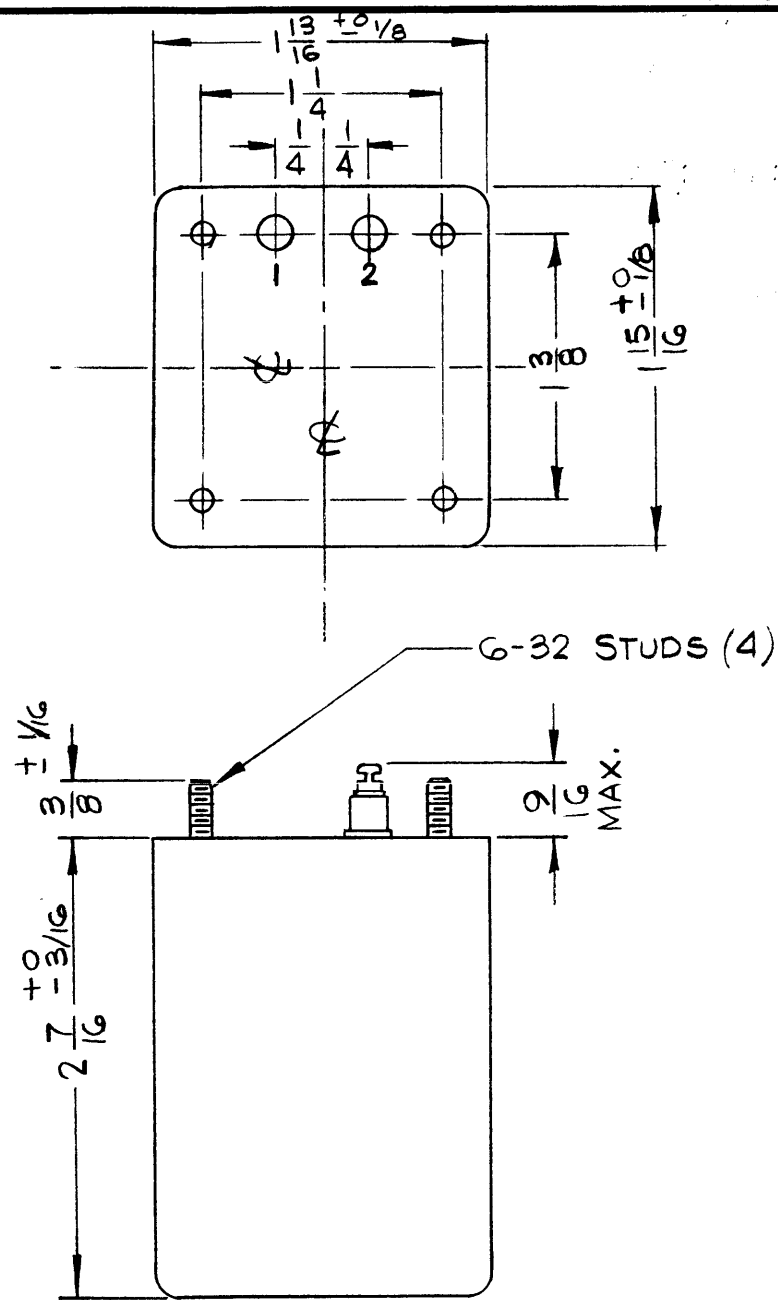
MARK TERMINALS

REQ'D.	ITEM	PART NUMBER	DESCRIPTION	SYMBOL
EATON LIST OF MATERIAL				
MATERIAL		THE TECHNICAL MATERIEL CORP. MAMARONECK, NEW YORK		
FINISH		TITLE FILTER, CHOKE		
UNLESS OTHERWISE SPECIFIED DIMENSIONS ARE IN INCHES AND INCLUDE CHEMICALLY APPLIED OR PLATED FINISHES		DRAWN H. AUSTIN	DATE 2-26-65	FINAL APPROVAL <i>[Signature]</i>
		CHECKED <i>[Signature]</i>	DATE 3-11-65	DATE 3/23/65
		ELECT. DES. <i>[Signature]</i>	DATE 3-23-65	TF 5020
		MECH. DES.	DATE	A
			SHEET	REV. LTR.

Q'TY./UNIT	MODEL USED ON	ASS'Y. NO.
SCALE 1:1	CODE C	S401-30 (5493C)
THE CONTENTS OF THIS DRAWING ARE THE EXCLUSIVE PROPERTY OF THE TECHNICAL MATERIEL CORP. ITS UNAUTHORIZED USE OR REPRODUCTION IN WHOLE OR IN PART IS STRICTLY FORBIDDEN.		

NOTES

STANDARD DRAWING



NOTES

Q'TY./UNIT	MODEL USED ON	ASS'Y. NO.
SCALE	CODE	S401-30(5494B)
—A—	C	
THE CONTENTS OF THIS DRAWING ARE THE EXCLUSIVE PROPERTY OF THE TECHNICAL MATERIEL CORP. ITS UNAUTHORIZED USE OR REPRODUCTION IN WHOLE OR IN PART IS STRICTLY FORBIDDEN.		

TF5021

REVISIONS					
SYM	DESCRIPTION	DATE	E.M.N. NO.	DRAFT	CHKD
Ø	ORIGINAL RELEASE FOR PRODUCTION	5/17/66		C.V.	J.C.

SPECIFICATIONS

ELECTRICAL:

INDUCTANCE: 0.1 HY MIN
 DC CURRENT RATING: 600 MA
 DC RESISTANCE: 2.5 Ω NOMINAL
 INSULATION TEST VOLTAGE: 500 VOLTS

MECHANICAL:

CASE: CRS STEEL, HERMETICALLY SEALED
 FINISH: S115 TMC GRAY, (EXCEPT STUD END)
 DIMENSIONS: SHOWN PICTORALLY
 TERMINALS: SOLDER LUG TYPE, CERAMIC STAND OFF
 TOLERANCE: ±1/32 UNLESS OTHERWISE SPECIFIED

STAMPING:

TERMINALS SHALL BE METAL STAMPED 1-2 AS SHOWN.
 SCHEMATIC DIAGRAM TO BE PLACED ON END OPPOSITE TERMINAL END, AS SHOWN.
 BLACK GOTHIC LETTERING AND LINE WORK.

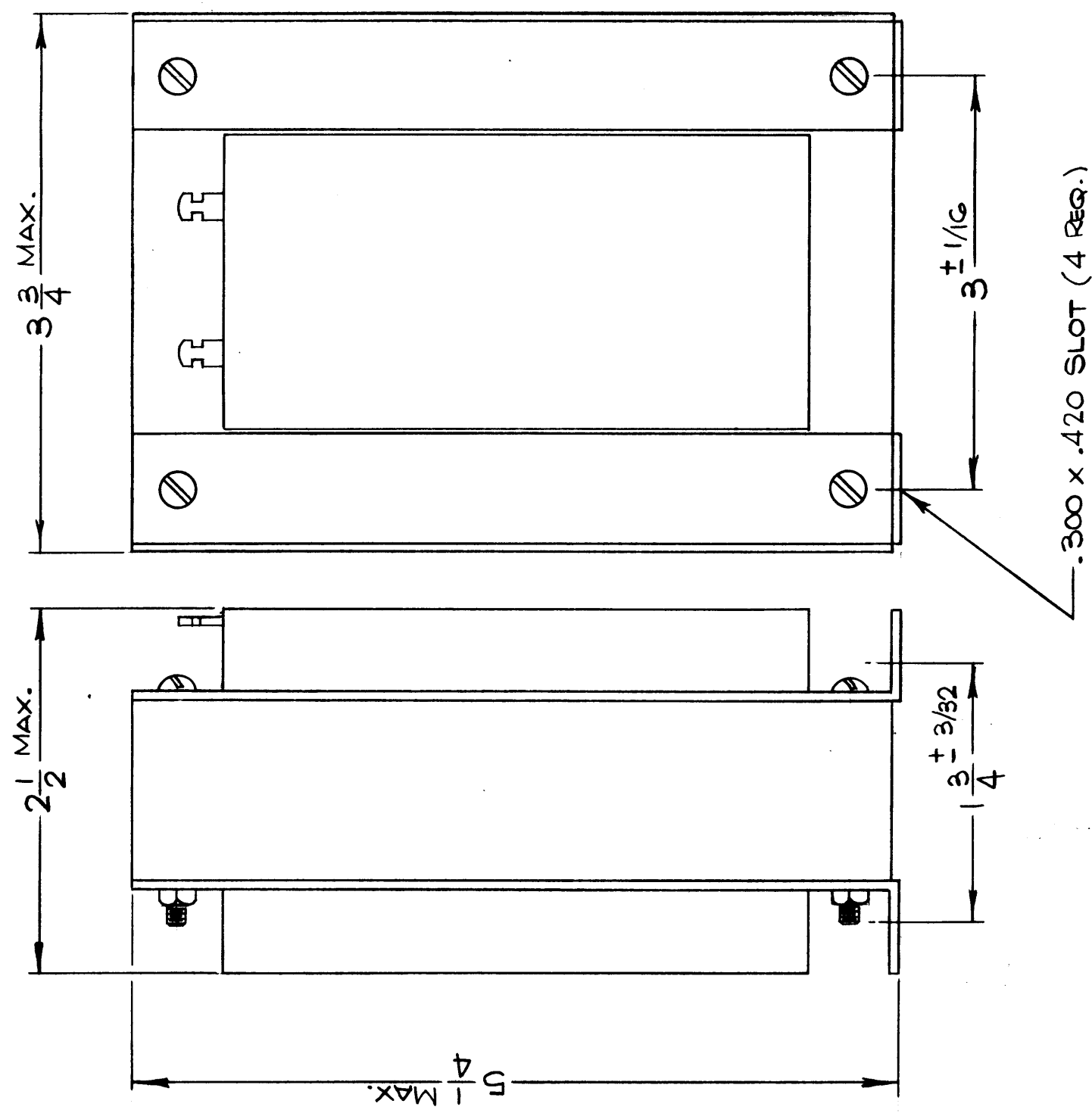
NOTE: MANUFACTURED IN ACCORDANCE W/MIL-SPEC T-27-A, EXCEPT THAT MIL SPEC T-27-A SHALL NOT APPEAR ON CASE AND QUALIFICATION TESTING IS NOT REQUIRED.

REQ'D.	ITEM	PART NUMBER	DESCRIPTION	SYMBOL
EATON LIST OF MATERIAL				
MATERIAL			THE TECHNICAL MATERIEL CORP. MAMARONECK, NEW YORK	
SEE SPECS.				
FINISH			TITLE	
SEE SPECS.			CHOKE, FILTER	
UNLESS OTHERWISE SPECIFIED DIMENSIONS ARE IN INCHES AND INCLUDE CHEMICALLY APPLIED OR PLATED FINISHES			DRAWN	DATE
			H.AUSTIN	3-18-66
			CHECKED	DATE
			J.C.	3/25/66
			ELECT. DES.	DATE
			J.C.	5/17/66
			MECH. DES.	DATE
			FINAL APPROVAL	DATE
			J.C.	5/16/66
			TF5021	Ø
			SHEET	REV. LTR.

STANDARD DRAWING

REVISIONS				
SYM	DESCRIPTION	DATE	E.M.N. NO.	CHKD
X1	36 OHMS ADDED TO DC RES NOM.	10/4/65	A	JC
Ø	ORIGINAL RELEASE FOR PROD	10/26/65		

TF5022



SPECIFICATIONS

INDUCTANCE: 2 HY
 MAXIMUM DC CURRENT- 600 MADC
 DC RESISTANCE NOMINAL - 36 OHMS
 INSULATION TEST VOLTAGE- 8000 VDC
 WORKING VOLTAGE- 5000 VDC
 CASE - OPEN FRAME
 FINISH: S-115 TMC SMOOTH GRAY ENAMEL (EXCEPT TERMINALS)
 DIMENSIONS: SHOWN PICTORIALY
 TERMINALS: SOLDER LUG TYPE
 NOMINAL AMBIENT TEMPERATURE: 50°C
 MARKING: BLACK GOTHIC LETTERING

NOTE: MANUFACTURED IN ACCORDANCE WITH MIL-S-T-27-A, EXCEPT THAT MIL SPEC. T-27-A SHALL NOT APPEAR ON CASE AND QUALIFICATION TESTING IS NOT REQUIRED.

REQ'D.	ITEM	PART NUMBER	DESCRIPTION	SYMBOL
	BUDETTI		LIST OF MATERIAL	
	MATERIAL		THE TECHNICAL MATERIEL CORP. MAMARONECK, NEW YORK	
	FINISH		REACTOR	
			UNLESS OTHERWISE SPECIFIED DIMENSIONS ARE IN INCHES AND INCLUDE CHEMICALLY APPLIED OR PLATED FINISHES	
			DECIMALS X ± .05 XX ± .01 XXX ± .008	
			FRACTI NS ± 1/64 ANGLES ± 0° 30'	
			TOLERANCES	
			DATE 9/21/65	DATE 10/26/65
			DRAWN H. AUSTIN	FINAL APPROVAL M. Ham
			CHECKED JCB	DATE 10/5/65
			ELECT. DES. JCB	DATE 10/26/65
			MECH. DES. JCB	DATE 10/26/65
			M/L JCB	DATE 10/25/65
			TF5022	REV. LTR.
			SHEET	33888

QTY./UNIT	SCALE	MODEL USED ON	ASSY. NO.
1	1" = 1"	TST(-)2.5K	AP128
		CODE	
		C	S401-30(G238)

NOTES

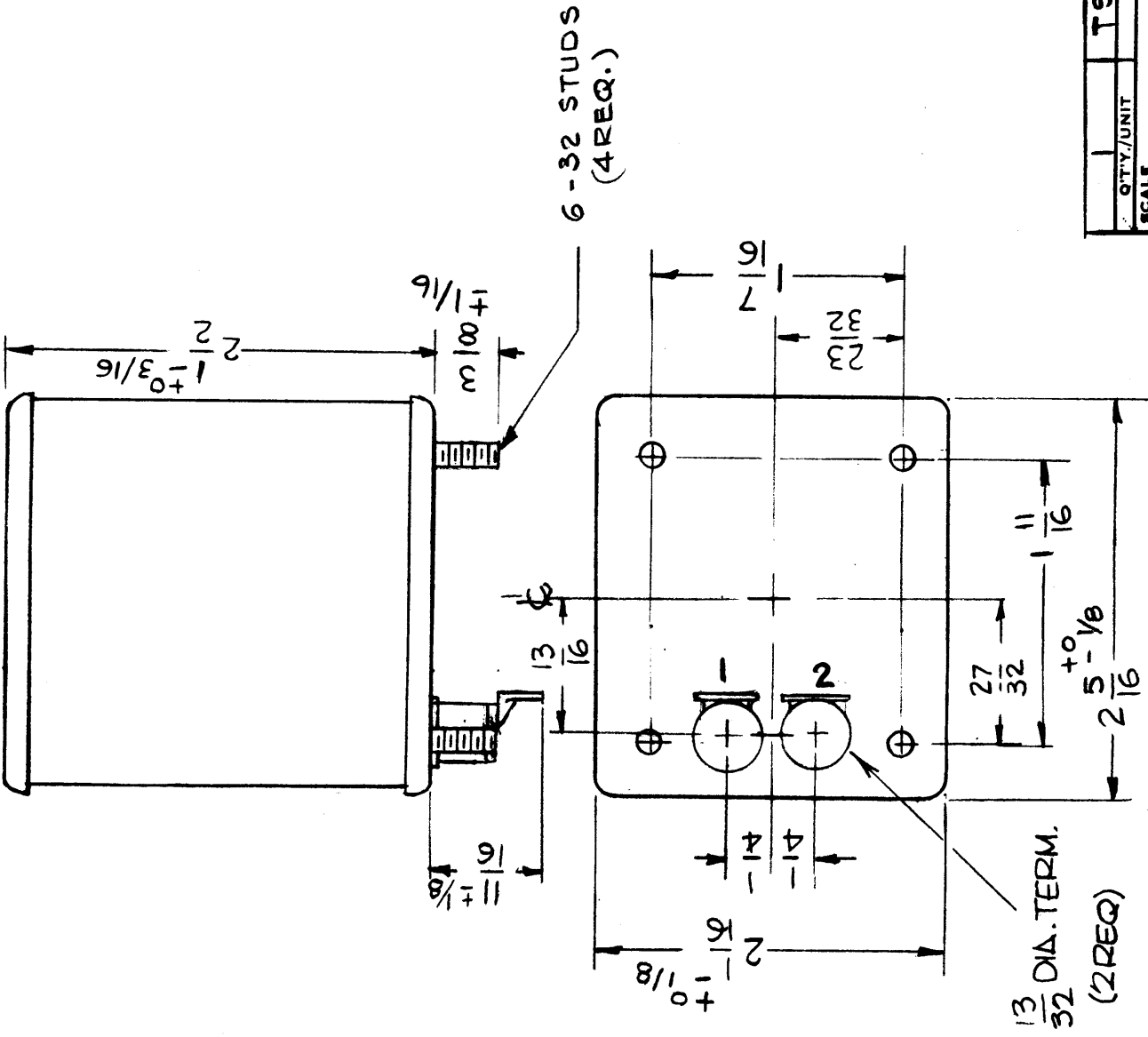
THE CONTENTS OF THIS DRAWING ARE THE EXCLUSIVE PROPERTY OF THE TECHNICAL MATERIEL CORP. ITS UNAUTHORIZED USE OR REPRODUCTION IN WHOLE OR IN PART IS STRICTLY FORBIDDEN.

STANDARD DRAWING

THE TECHNICAL MATERIEL CORP.
MAMARONECK
NEW YORK

TF5023

2 HY
200 MA



NOTES

THE CONTENTS OF THIS DRAWING ARE THE EXCLUSIVE PROPERTY OF THE TECHNICAL MATERIEL CORP. ITS UNAUTHORIZED USE OR REPRODUCTION IN WHOLE OR IN PART IS STRICTLY FORBIDDEN.

REVISIONS

SYM	DESCRIPTION	DATE	E.M.N. NO.	DRAFT	CHKD	APPD
XI	MODEL WAS TSTA-2.5K ORIGINAL RELEASE FOR PRODUCTION	11/5/65	M-	JC		
A	CHG'D. DIM. FROM 1/16 TO 1/16 ± 1/8 (TERM.)	7/22/66	16615	RME		

TF5023

Elect. Specs.

INDUCTANCE - 1.8 HY MIN
CURRENT RATING - 200 MA. DC
DC RESISTANCE - 100Ω APPROX.
WORKING VOLT. - 900V
TEST VOLT. - 2500 VOLTS, 30 VOLTS @ 400 CPS

Mech. Specs.

CASE - STEEL, HERMETICALLY SEALED
TERMINALS - CERAMIC, SOLDER TERMINAL
MARKING - TERMINALS TO BE STAMPED 1 & 2.
OPPOSITE END TO BE STAMPED AS SHOWN IN BLACK.

FINISH S-115 SMOOTH GRAY ENAMEL (EXCEPT FOR STUD END)

REQ'D.	ITEM	PART NUMBER	DESCRIPTION	SYMBOL
	BUDETTI		LIST OF MATERIAL	
	MATERIAL		THE TECHNICAL MATERIEL CORP. MAMARONECK, NEW YORK	
	FINISH		REACTOR	

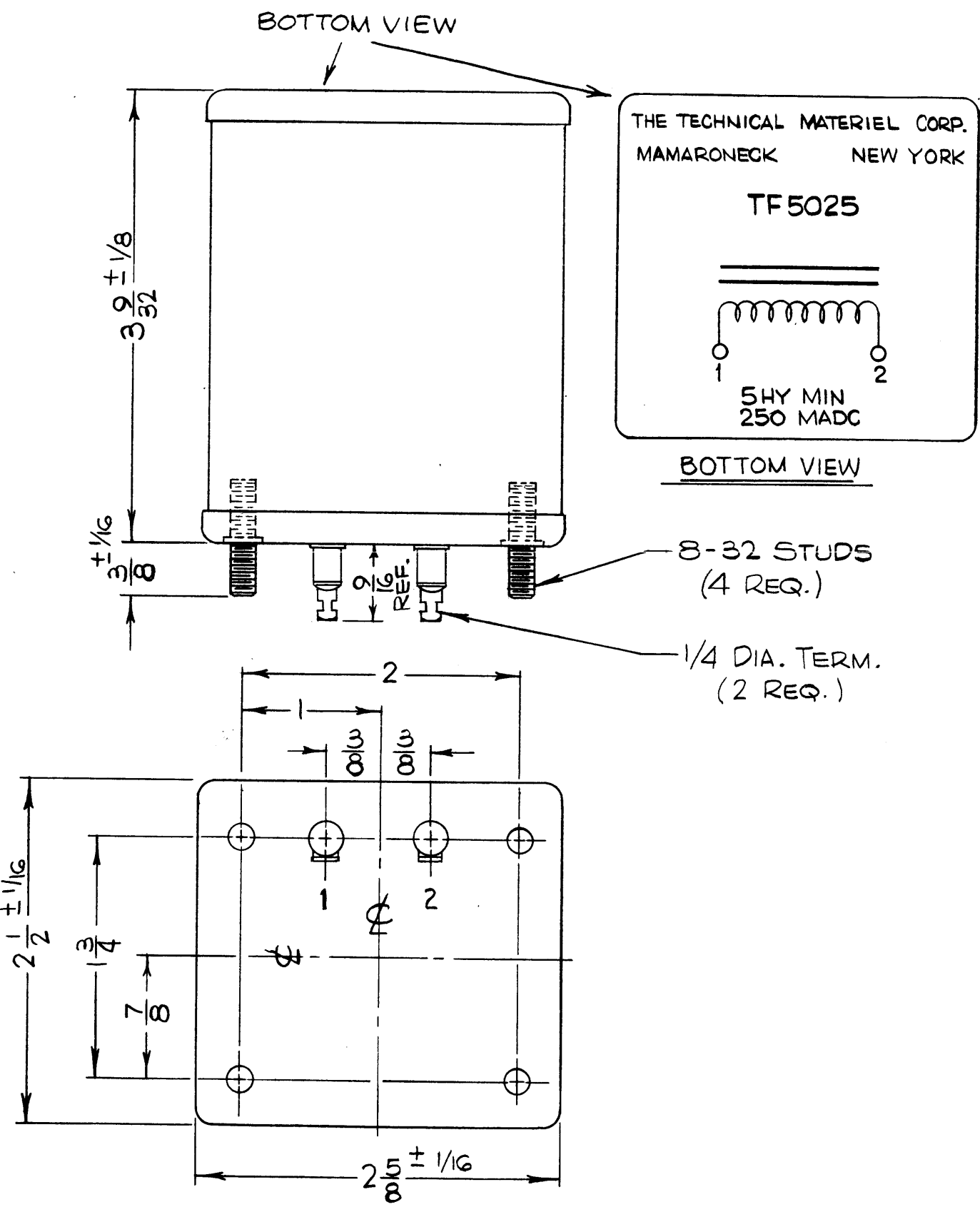
UNLESS OTHERWISE SPECIFIED DIMENSIONS ARE IN INCHES AND INCLUDE CHEMICALLY APPLIED OR PLATED FINISHES	DRAWN G.D.L.	DATE 10-7-65	FINAL APPROVAL	DATE 10/27/65
DECIMALS .X ± .05 .XX ± .01 .XXX ± .008	CHECKED	DATE 10/27/65	DATE 10/27/65	DATE 10/27/65
FRACTIONS ± 1/32 ANGLE ± 0° 30'	ELECT. DES.	DATE 10/27/65	DATE 10/27/65	DATE 10/27/65
TOLERANCES	MECH. DES.	DATE 10/27/65	DATE 10/27/65	DATE 10/27/65
	M/L	DATE 10/27/65	DATE 10/27/65	DATE 10/27/65

QTY./UNIT	MODEL USED ON	ASSY. NO.
SCALE 1:1	C	S401-30-6630

STANDARD DRAWING

A
TF5025

REVISIONS						
SYM	DESCRIPTION	DATE	E.M.N. NO.	DRAFT	CHKD	APPD
XI	90 OHMS ADDED TO DC RES. NOM.	10/4/65	M	JC		
0	ORIGINAL RELEASE FOR PROD	10/26/65				
A	ADDED LETTERING 1 & 2 TO TERM	8-11-66	16732	RME		



SPECIFICATIONS:

INDUCTANCE: 5 HY MINIMUM
MAXIMUM DC CURRENT: 250 MADC
DC RESISTANCE NOMINAL: 90 OHMS
INSULATION TEST VOLTAGE: 1500 V DC
WORKING VOLTAGE: 450V, 120 CPS; 30V, 400 CPS
CASE: RECTANGULAR STEEL, HERMETICALLY SEALED
FINISH: S-115 TMC SMOOTH GRAY ENAMEL (EXCEPT STUD END)
DIMENSIONS: SHOWN PICTORIALY
TERMINALS: SOLDER LUG TYPE, CERAMIC STANDOFF
NOMINAL AMBIENT TEMPERATURE: 50°C

STAMPING:

TERMINALS SHALL BE METAL STAMPED 1-2 AS SHOWN. SCHEMATIC DIAGRAM TO BE PLACED ON END OPPOSITE TERMINAL END, AS SHOWN. BLACK GOTHIC LETTERING AND LINE WORK.

NOTE:

MANUFACTURED IN ACCORDANCE WITH MIL-SPEC. T-27-A, EXCEPT THAT MIL SPEC. T-27-A SHALL NOT APPEAR ON CASE AND QUALIFICATION TESTING IS NOT REQUIRED.

REQ'D.	ITEM	PART NUMBER	DESCRIPTION	SYMBOL
--------	------	-------------	-------------	--------

BUDETTI	LIST OF MATERIAL
MATERIAL	THE TECHNICAL MATERIEL CORP. MAMARONECK, NEW YORK
FINISH	TITLE REACTOR

UNLESS OTHERWISE SPECIFIED DIMENSIONS ARE IN INCHES AND INCLUDE CHEMICALLY APPLIED OR PLATED FINISHES	DRAWN H. AUSTIN	DATE 9-21-65	FINAL APPROVAL <i>[Signature]</i>	DATE 10/21/65
	CHECKED <i>[Signature]</i>	DATE 10/5/65		
	ELECT. DES. <i>[Signature]</i>	DATE 11/19/66	TF5025	A
	MECH. DES. <i>[Signature]</i>	DATE 10/26/65	SHEET	REV. LTR.
	M/L <i>[Signature]</i>	DATE 10/25/65		

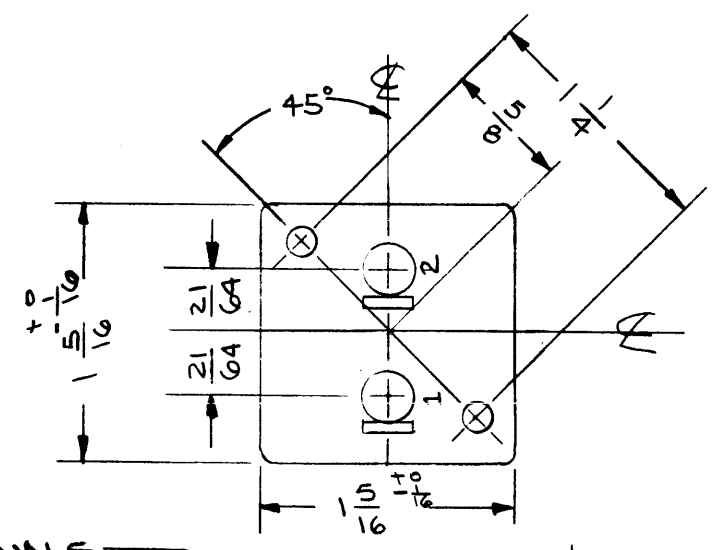
2	API28	A5256
Q'TY./UNIT	MODEL USED ON	ASS'Y. NO.
SCALE —A—	CODE C	S401-30 (GG25)

NOTES

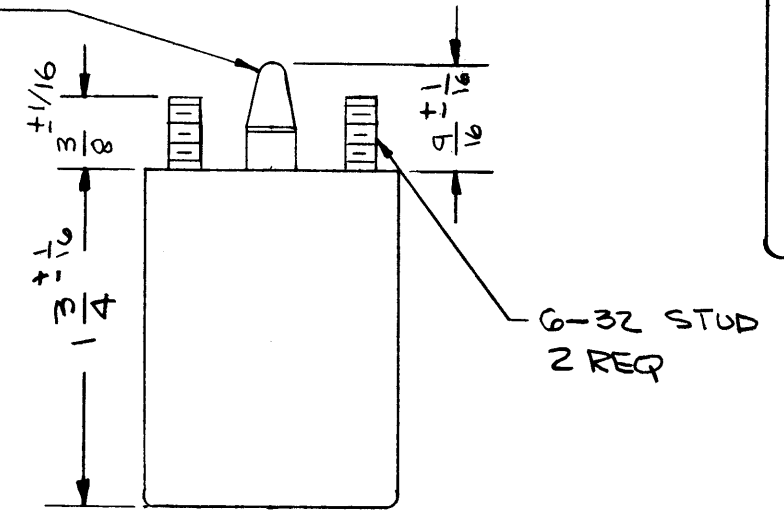
THE CONTENTS OF THIS DRAWING ARE THE EXCLUSIVE PROPERTY OF THE TECHNICAL MATERIEL CORP. ITS UNAUTHORIZED USE OR REPRODUCTION IN WHOLE OR IN PART IS STRICTLY FORBIDDEN.

TF 5028

REVISIONS					
SYM	DESCRIPTION	DATE	E.M.N. NO.	DRAFT	CHKD APPD
Ø	ORIGINAL RELEASE FOR PRODUCTION	10/27/65	Ø	H.V.	



1/4 DIA. TERMINALS



THE TECHNICAL MATERIEL CORPORATION
 MAMARONECK, NEW YORK
TF5028

5HY
25MA DC

INDUCTANCE: 5 HY @ 25MA DC
 DC RESISTANCE: 375 OHMS
 WORKING VOLTAGE:
 TEST VOLTAGE:
 CASE MATERIAL: Steel, Hermitically scaled.
 FINISH: TMC Gray, S115 (Except Stud end)
 TERMINAL TYPE: Ceramic, solder lug

STAMPING
 Terminals shall be metal stamped 1-2 as shown. Schematic Diagram to be placed on end opposite terminal end, as shown. Black Gothic lettering and line work.

NOTE
 Manufactured in accordance with MIL SPEC T-27-A, except that MIL SPEC T-27-A shall not appear on case and qualification testing is not required.

REQ'D.	ITEM	PART NUMBER	DESCRIPTION	SYMBOL
BUDETTI LIST OF MATERIAL				
MATERIAL		THE TECHNICAL MATERIEL CORP. MAMARONECK, NEW YORK		
FINISH		TITLE REACTOR		
UNLESS OTHERWISE SPECIFIED DIMENSIONS ARE IN INCHES AND INCLUDE CHEMICALLY APPLIED OR PLATED FINISHES		DRAWN EANZA	DATE 9-17-65	FINAL APPROV. [Signature]
DECIMALS .X ± .05 .XX ± .01 .XXX ± .005		CHECKED [Signature]	DATE 10/7/65	DATE 10/27/65
FRACTIONS ± 1/64 ANGLES ± 0° 30'		ELECT. DES. [Signature]	DATE 11/9/66	DATE
TOLERANCES		MECH. DES.	DATE	DATE
		M/L [Signature]	DATE 10/25/65	

1	API28	A5256
Q'TY./UNIT	MODEL USED ON	ASS'Y. NO.
SCALE 1:1	CODE	S401-30(6979)
THE CONTENTS OF THIS DRAWING ARE THE EXCLUSIVE PROPERTY OF THE TECHNICAL MATERIEL CORP. ITS UNAUTHORIZED USE OR REPRODUCTION IN WHOLE OR IN PART IS STRICTLY FORBIDDEN.		

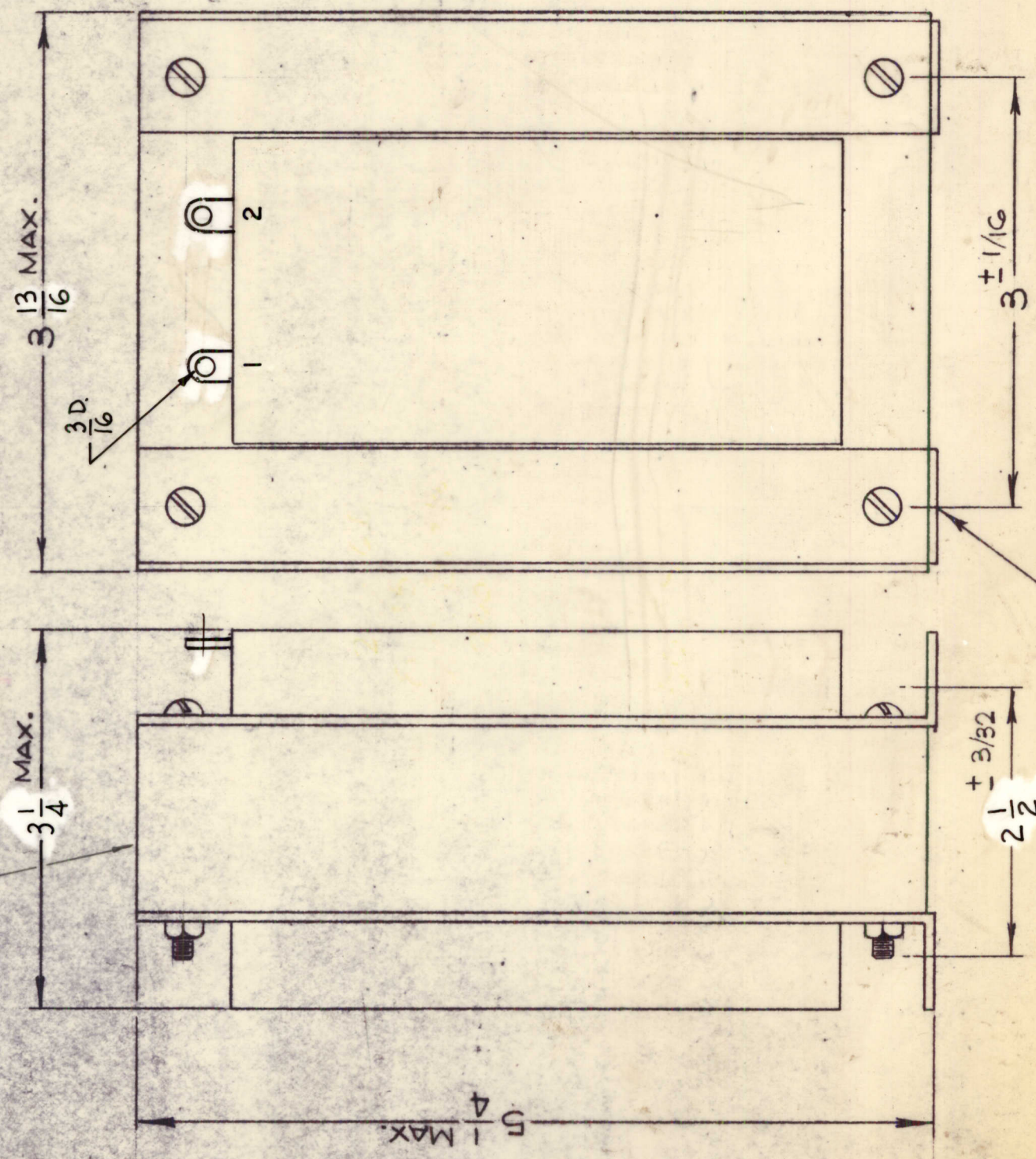
NOTES

REVISIONS

SYM	DESCRIPTION	DATE	E.M.N. NO.	DRAFT	CHKD	APFD
X1	SPECS & OVERALL SIZE REVISED	6-5-66	X1	L.P.K.		
Ø	ORIGINAL RELEASE FOR PRODUCTION	2-27-67		L.P.K.		

TF 5029

STAMPING



SPECIFICATIONS

INDUCTANCE: 1.7 HY MIN.
 MAXIMUM DC CURRENT - 1.3 ADC
 DC RESISTANCE NOMINAL - 18 OHMS
 INSULATION TEST VOLTAGE - 10,000V ERMS
 WORKING VOLTAGE - 5000 VDC
 CASE - OPEN FRAME
 FINISH: BLACK MATT. (EXCEPT TERMINALS)
 DIMENSIONS: SHOWN PICTORIALY
 TERMINALS: LUGS FOR 8-32 SCREWS
 NOMINAL AMBIENT TEMPERATURE: 50°C
 MARKING: WHITE GOTHIC LETTERING

NOTE: MANUFACTURED IN ACCORDANCE WITH MIL-S-T-27-A, EXCEPT THAT MIL SPEC. T-27-A SHALL NOT APPEAR ON CASE AND QUALIFICATION TESTING IS NOT REQUIRED.

THE TECHNICAL MATERIEL CORPORATION
 MAMARONECK
 TF5029

THE TECHNICAL MATERIEL CORPORATION
 NEW YORK

STAMP ON TOP
 OF REACTOR

REQ'D.	ITEM	PART NUMBER	DESCRIPTION	SYMBOL
	BUDETTI		LIST OF MATERIAL	
	MATERIAL		THE TECHNICAL MATERIEL CORP. MAMARONECK, NEW YORK	
	FINISH		REACTOR	

UNLESS OTHERWISE SPECIFIED DIMENSIONS ARE IN INCHES AND INCLUDE CHEMICALLY APPLIED OR PLATED FINISHES	DATE	DATE	DATE	DATE
DRAWN G.D.L.	4-29-66			
CHECKED				
ELECT. DESIGNED				
MECH. DESIGNED				

DECIMALS	FRACTIONS	TOLERANCES	ANGLES
.XX ± .01	± 1/64	± .005	± 0° 30'

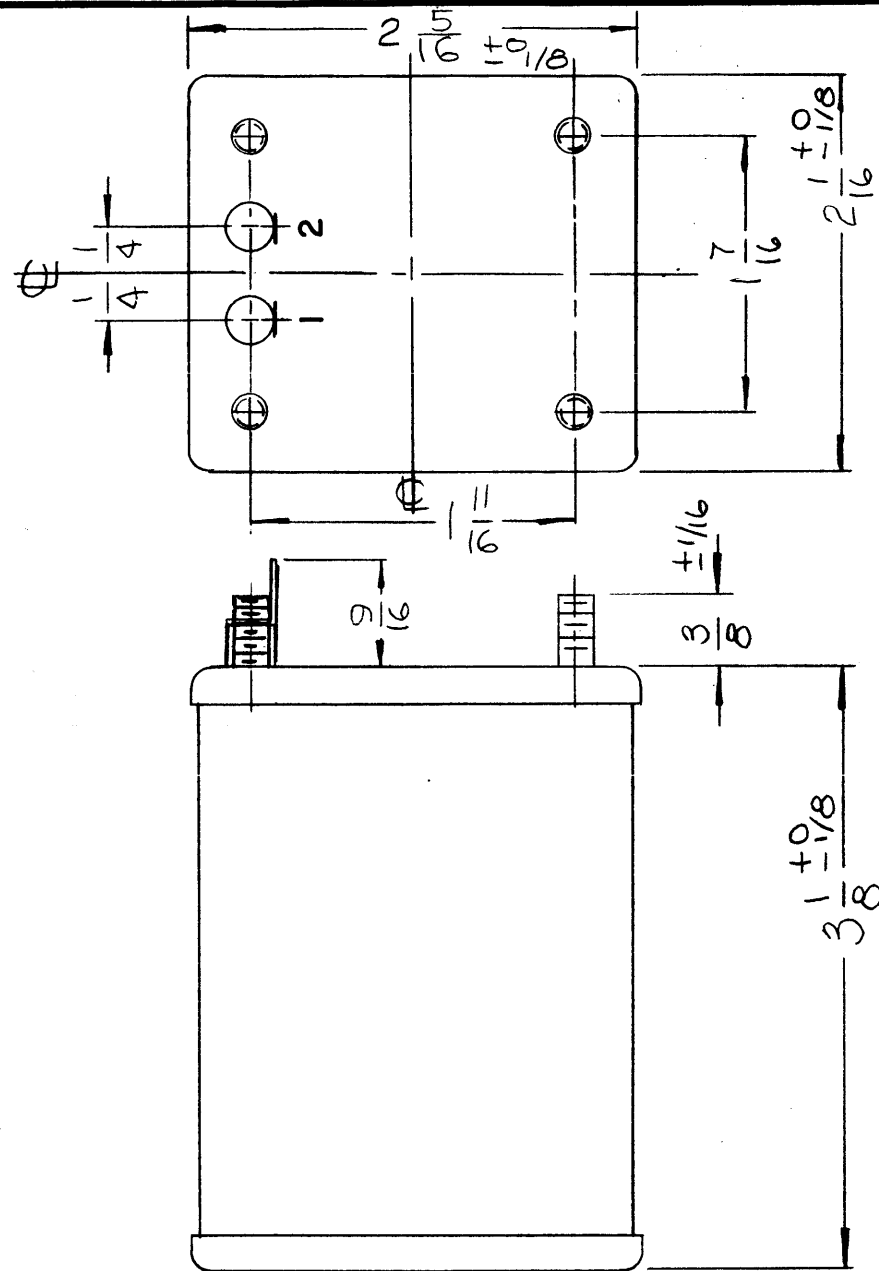
QTY./UNIT	MODEL USED ON	ASSY. NO.
1	AP-129	A5476

SCALE	CODE	SAOI-30 (7358)
1	C	

NOTES

THE CONTENTS OF THIS DRAWING ARE THE EXCLUSIVE PROPERTY OF THE TECHNICAL MATERIEL CORP. ITS UNAUTHORIZED USE OR REPRODUCTION IN WHOLE OR IN PART IS STRICTLY FORBIDDEN.

STANDARD DRAWING



TF5030

REVISIONS				
SYM	DESCRIPTION	DATE	E.M.N. NO.	DRAF.
X	EXPERIMENTAL RELEASE	6.2.66	—H	WFW
Ø	ORIGINAL RELEASE FOR PRODUCTION	6-28-66	Ø	GDL

SPECIFICATIONS

ELECTRICAL:

INDUCTANCE: 1.5HY ±10%
 DC CURRENT RATING: 300MADC
 DC RESISTANCE: 36Ω APPROX
 INSULATION TEST VOLTAGE: 1KVRMS

MECHANICAL:

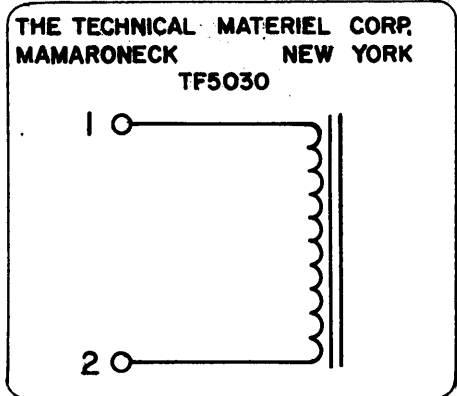
CASE: CR STEEL, HOT TIN DIP, HERMITICALLY SEALED
 FINISH: S115 TMC GRAY (EXCEPT STUD END)
 DIMENSIONS: SHOWN PICTORIALY
 TERMINALS: SOLDER LUG TYPE, CERAMIC STANDOFF
 MTG. STUDS: 6-32 x 3/8 LONG

STAMPING:

TERMINALS SHALL BE METAL STAMPED AS SHOWN.
 SCHEMATIC DIAGRAM TO BE PLACED ON END OPPOSITE TERMINAL END (AS SHOWN).
 BLACK GOTHIC LETTERING & LINE WORK AS PER TMC SPECIFICATION (S727).

NOTE

MANUFACTURED IN ACCORDANCE WITH MIL-SPEC T-27-A, EXCEPT THAT MIL-SPEC T-27-A SHALL NOT APPEAR ON CASE AND QUALIFICATION TESTING IS NOT REQUIRED



NOTES

1	CFA-2	
Q'TY./UNIT	MODEL USED ON	ASS'Y. NO.
SCALE	CODE	S401-30 (7335)

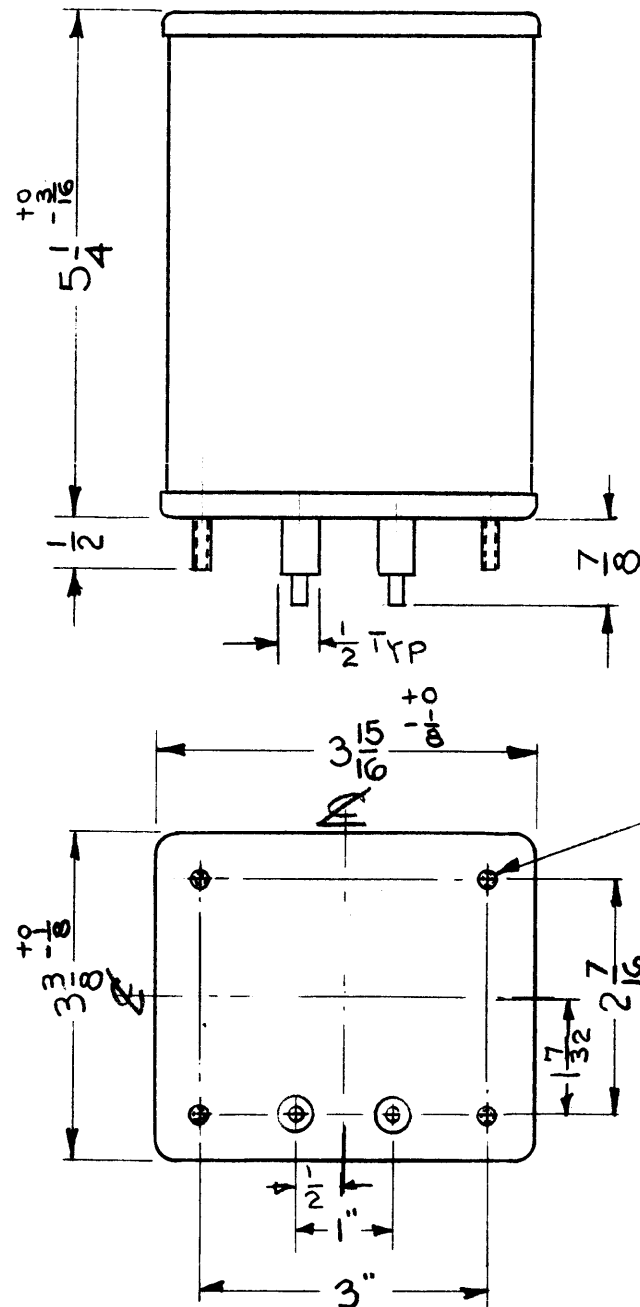
THE CONTENTS OF THIS DRAWING ARE THE EXCLUSIVE PROPERTY OF THE TECHNICAL MATERIEL CORP. ITS UNAUTHORIZED USE OR REPRODUCTION IN WHOLE OR IN PART IS STRICTLY FORBIDDEN.

REQ'D.	ITEM	PART NUMBER	DESCRIPTION	SYMBOL
DUDDLES LIST OF MATERIAL				
MATERIAL		THE TECHNICAL MATERIEL CORP. MAMARONECK, NEW YORK		
FINISH		TITLE REACTOR		
UNLESS OTHERWISE SPECIFIED DIMENSIONS ARE IN INCHES AND INCLUDE CHEMICALLY APPLIED OR PLATED FINISHES		DRAWN	DATE	FINAL APPROVAL
		WFW	6.2.66	M.H.H.
		CHECKED	DATE	
		J.D.	6-14-66	
		ELECT. DES.	DATE	
		MECH. DES.	DATE	
		TF5030		Ø
		SHEET		REV. LTR.

ML 28 6/29/66

STANDARD DRAWING

THE TECHNICAL MATERIEL CORP.
MAMARONECK NEW YORK
TF5031
7 TO 25HYS
80 TO 300MA



TF5031

REVISIONS					
SYM	DESCRIPTION	DATE	E.M.N. NO.	DRAFT	CHKD APPD
X	EXPERIMENTAL RELEASE	10/26/66	X		
Ø	ORIGINAL RELEASE FOR PRODUCTION	3-20-67		L.A.K.	

SPECIFICATIONS

INDUCTANCE RANGE: 7 TO 25 Hys
 DC CURRENT RATING: 80 TO 300 MA
 DC RESISTANCE: 140 ±15%
 INSULATION TEST VOLTS: 6000 RMS

CASE DATA:

HERMETICALLY SEALED: YES
 CASE TYPE: FULLY INCLOSED
 MATERIAL: COLD ROLLED STEEL
 MOUNTING: (4) 10-32 STUDS, ON 3" BY 2 7/16" CENTERS
 TERMINALS: STANDOFF CERAMIC SOLDER TYPE
 QUANTITY OF TERMINALS: 2

REQ'D.	ITEM	PART NUMBER	DESCRIPTION	SYMBOL
BUTLER LIST OF MATERIAL				
MATERIAL			THE TECHNICAL MATERIEL CORP. MAMARONECK, NEW YORK	
SEE SPECS.			REACTOR, SWINGING CHOKE	
FINISH			TITLE	
			REACTOR, SWINGING CHOKE	
UNLESS OTHERWISE SPECIFIED DIMENSIONS ARE IN INCHES AND INCLUDE CHEMICALLY APPLIED OR PLATED FINISHES			DRAWN	DATE
			7-12-66	FINAL APPROVAL
			CHECKED	DATE
			10/28/66	3/20/67
			ELECT. DES.	DATE
			10/28/66	TF5031
			MECH. DES.	DATE
			SHEET	REV. LTR.

Q'TY./UNIT	MODEL USED ON	ASS'Y. NO.
SCALE	CODE	
HALF		
THE CONTENTS OF THIS DRAWING ARE THE EXCLUSIVE PROPERTY OF THE TECHNICAL MATERIEL CORP. ITS UNAUTHORIZED USE OR REPRODUCTION IN WHOLE OR IN PART IS STRICTLY FORBIDDEN.		

NOTES

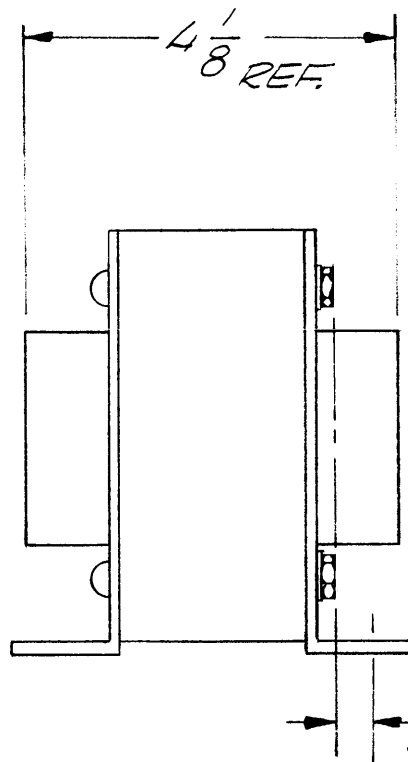
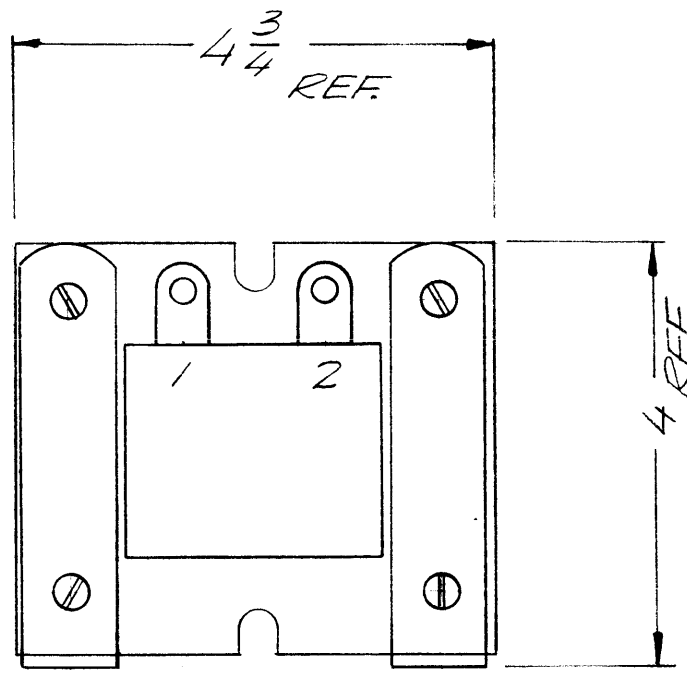
5

4

3

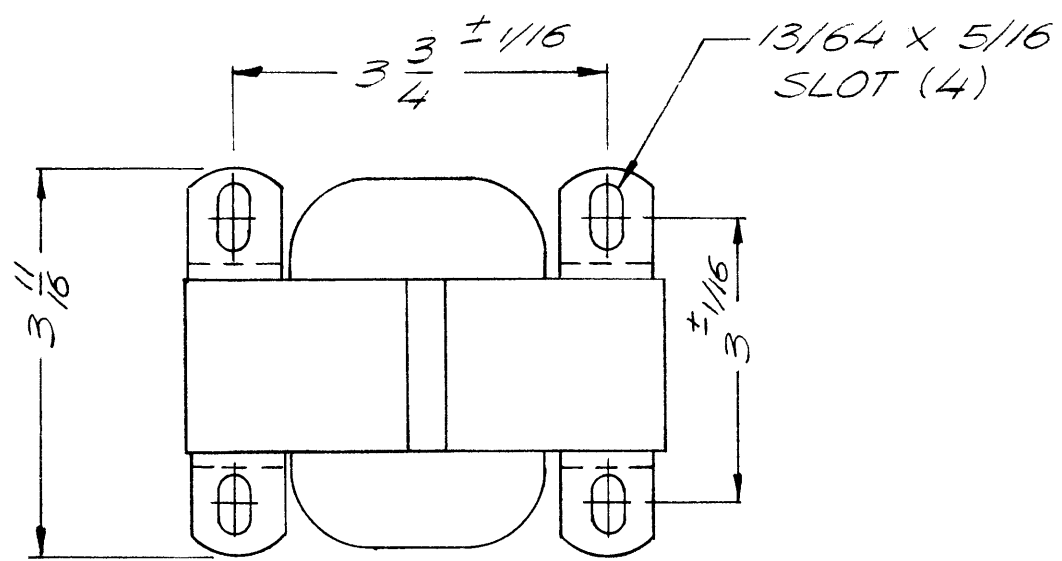
2

1



REVISIONS						
ZONE	LTR	DESCRIPTION	DATE	E.M.N.NO	DRAFT	CHKD APPD
	X	EXP RELEASE	3/17/70		GE	
	Ø	ORIG RELEASE FOR PROD	3/17/70		CV	
	A	ADD 7/32 DIM. FRM. Ø OF MTG. H.	5-5-72	20669	GE	EP EP
	B	.50 ADC WAS 5.0	8-18-80	21826	dw	JK

ELECTRICAL SPECIFICATIONS
 5.0 hy @ .50 ADC
 DC RES = 45 Ω APPROX
 MAX. W.V. = 4000W



TMC TF 5034
 5.0 hy @ .50 ADC

TOF VIEW THIS SIDE ONLY

QTY / UNIT	MODEL USED ON	ASS'Y NO.
1	HFLA 10 K	AP 148
1	PALA 10 K	AP 148

APPLICATION	
CODE	S401-(7751)

NOTICE TO PERSONS RECEIVING THIS DRAWING
 THE TECHNICAL MATERIEL CORPORATION claims proprietary right in the material disclosed hereon. This drawing is issued in confidence for engineering information only and may not be reproduced or used to manufacture anything shown hereon without permission from THE TECHNICAL MATERIEL CORPORATION to the user. This drawing is loaned for mutual assistance and is subject to recall at any time.

UNLESS OTHERWISE SPECIFIED DIMENSIONS ARE IN INCHES AND INCLUDE CHEMICALLY APPLIED OR PLATED FINISHES

DECIMALS	FRACTIONS	TOLS.	ANGLES
.X ± .05	1/64		
.XX ± .01			0° -30'
.XXX ± .005			

MATERIAL
 FINISH

REQ'D	ITEM	PART NUMBER	DESCRIPTION	SYM.
			F. BUDETTI LIST OF MATERIAL	
			THE TECHNICAL MATERIEL CORP. MAMARONECK, NEW YORK	
			REACTOR	
			SIZE B	
			CODE IDENT. NO. 82679	
			DWG NO. TF 5034	
			ISSUE B	
			SCALE NTS	
			SHEET OF	

5

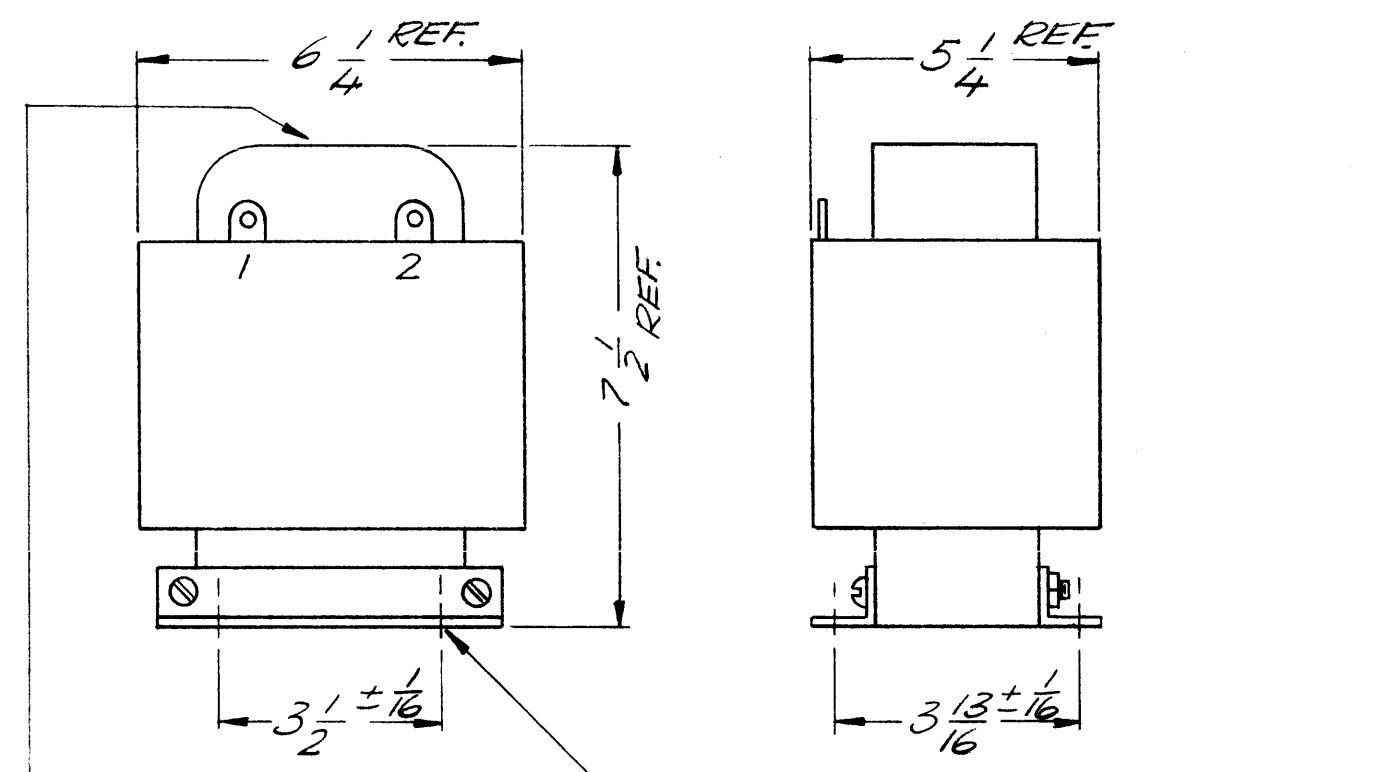
4

3

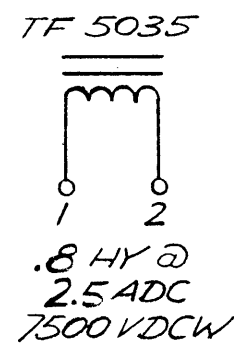
2

1

REVISIONS						
ZONE	LTR	DESCRIPTION	DATE	E.M.N.NO	DRAFT	CHKD APPD
	X	EXP. RELEASE	12/13/69		✓	
	Ø	ORIGINAL RELEASE	1/11/70		Ø	
	A	INDUCT. WAS. 2.0HY@1.6ADC	6-27-72	20772	CE	ej eg



THE TECHNICAL MATERIEL CORP.
MAMARONECK NEW YORK



ELECT. SPECS.

INDUCTANCE: .8 HY AT 2.5 ADC

DC RESISTANCE: 16 Ω APPROX.

INSULATION TEST VOLTAGE: 11500 VRMS

WORKING VOLTAGE: 7,500 VDC

MECH. SPECS.

CASE: OPEN FRAME

FINISH: BLACK MATT

(EXCEPT TERMINALS)

DIMENSIONS: SHOWN PICTORIALY

TERMINALS: SOLDER LUG TYPE

MARKING: ACCORDING TO TMC SPEC S 727

WHITE GOTHIC LETTERING AND LINE WORK.

SCHEMATIC TO BE PLACED AS SHOWN.

NOTE:

MANUFACTURED IN ACCORDANCE WITH MIL-SPEC. T-27-A, EXCEPT THAT MIL-SPEC. T-27-A SHALL NOT APPEAR ON CASE AND QUALIFICATION TESTING IS NOT REQUIRED.

1	PALA-10K	AP 148
QTY / UNIT	MODEL USED ON	ASS'Y NO.
APPLICATION		
	CODE	S401-30 (6239)

NOTICE TO PERSONS RECEIVING THIS DRAWING
THE TECHNICAL MATERIEL CORPORATION claims proprietary right in the material disclosed hereon. This drawing is issued in confidence for engineering information only and may not be reproduced or used to manufacture anything shown hereon without permission from THE TECHNICAL MATERIEL CORPORATION to the user. This drawing is loaned for mutual assistance and is subject to recall at any time.

UNLESS OTHERWISE SPECIFIED DIMENSIONS ARE IN INCHES AND INCLUDE CHEMICALLY APPLIED OR PLATED FINISHES

DECIMALS	FRACTIONS
.X ± .05	TOLS. 1/64
.XX ± .01	ANGLES 0° -30'
.XXX ± .005	

MATERIAL
FINISH

REQ'D	ITEM	PART NUMBER	DESCRIPTION	SYM.
BUDETTI LIST OF MATERIAL				
THE TECHNICAL MATERIEL CORP. MAMARONECK, NEW YORK				
REACTOR				
FINAL APPROV.	DATE	THE TECHNICAL MATERIEL CORP. MAMARONECK, NEW YORK		
MECH. DES.	DATE	REACTOR		
ELECT. DES.	DATE	REACTOR		
CHECKED	DATE	REACTOR		
DRAWN	DATE	REACTOR		
SIZE	CODE IDENT. NO.	DWG NO.	ISSUE	
B	82679	TF 5035	A	
SCALE		SHEET OF		