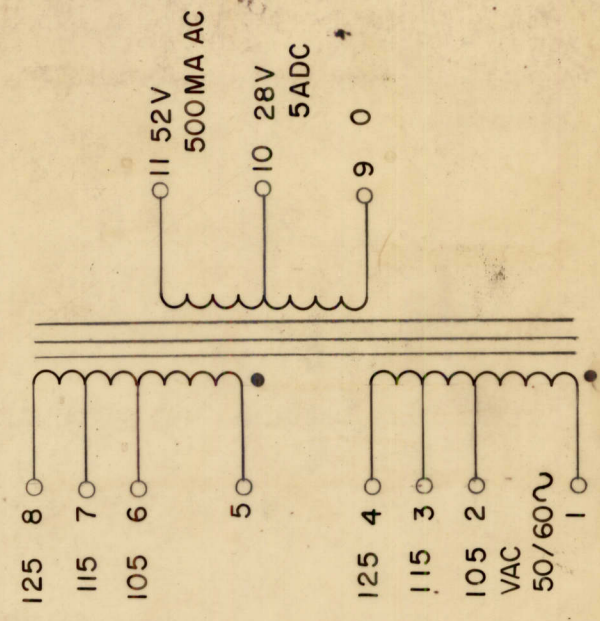
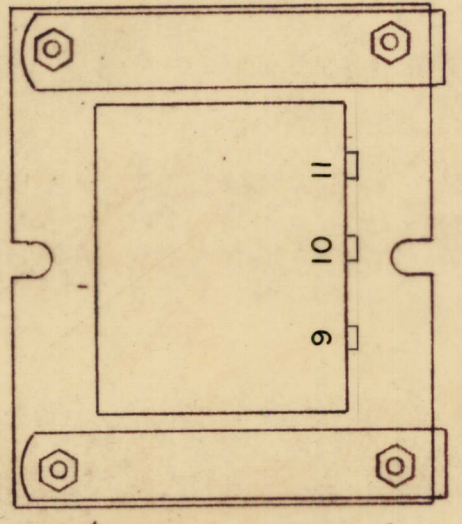
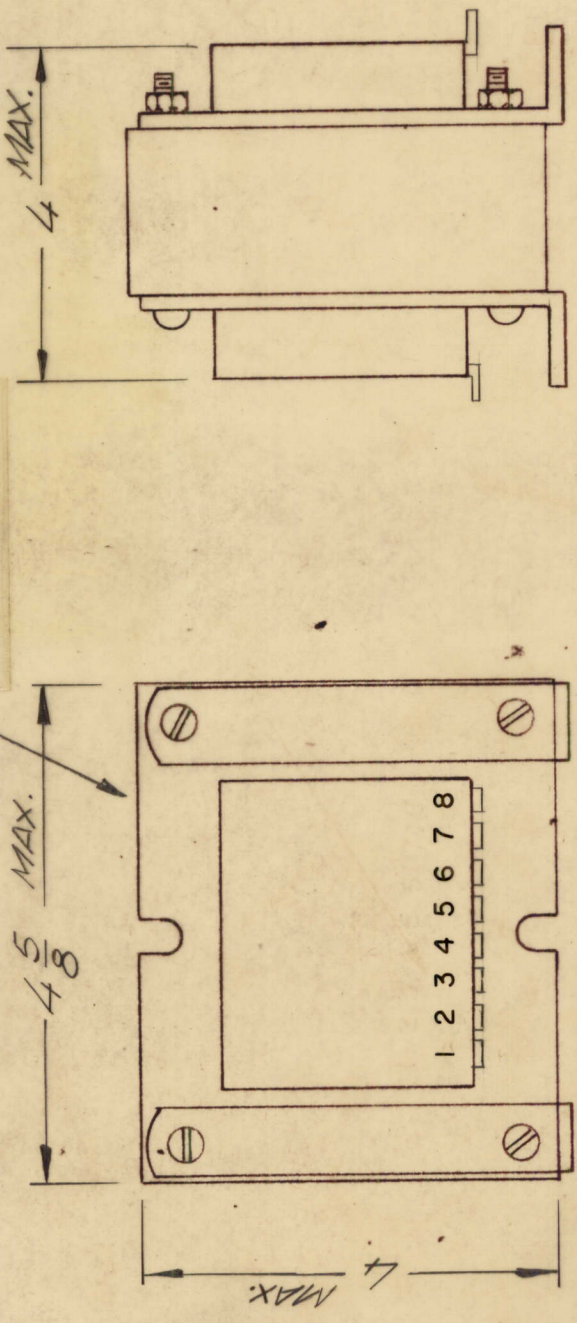
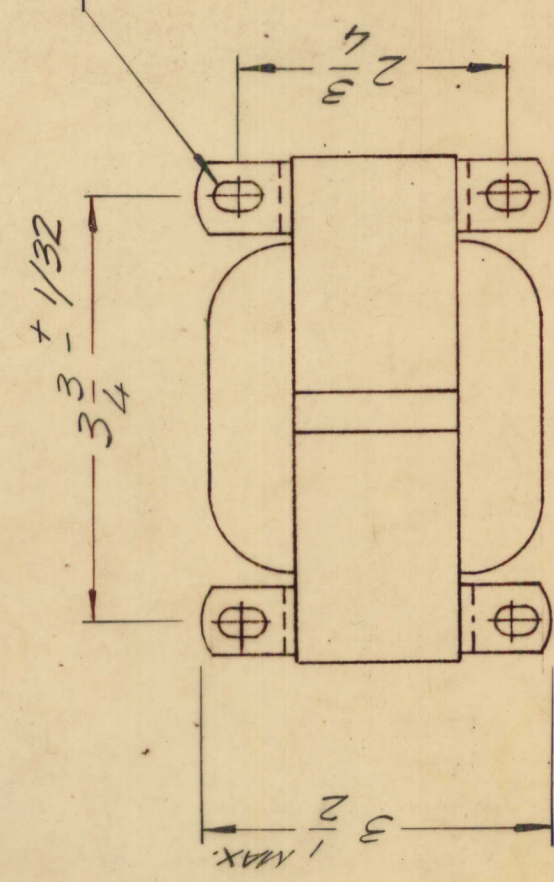


REVISIONS							
ZONE	LTR	DESCRIPTION	DATE	E.M.N. NO	DRAFT	CHKD	APPD
	X	EXP RELEASE	8/9/70		GE		
	Ø	ORIGINAL RELEASE	9/19/71		Ø		Ø
	A	ADD VAC 50/60~ TO SCH.	4-26-72	20608	GE	Ø	Ø

MARK TMC PART NUMBER  
1/8 HIGH GOTHIC WITH LATEST  
REVISION LETTER



13/64 x 5/16  
SLOT 4 REQ.



REQ'D ITEM	PART NUMBER	DESCRIPTION	SYM.
BUDETTI		LIST OF MATERIAL	
FINAL APPROVAL	DATE	THE TECHNICAL MATERIEL CORP.	
MECH. DES.	DATE	MAMARONECK, NEW YORK	
ELECT. DES.	DATE	XFMR, L.V.	
CHECKED	DATE		
DRAWN	DATE		
5401-30(9090C)		SIZE	CODE IDENT. NO.
		B	82679
		SCALE	DWG NO.
		20 X 107	TF 415
			ISSUE
			A
			SHEET
			OF
			1

UNLESS OTHERWISE SPECIFIED  
DIMENSIONS ARE IN INCHES  
AND INCLUDE CHEMICALLY APPLIED  
OR PLATED FINISHES

DECIMALS  
.X ± .05  
.XX ± .01  
.XXX ± .005

FRACTIONS  
1/64  
ANGLES  
0°-30'

MATERIAL

FINISH

QTY / UNIT	MODEL USED ON	ASS'Y NO.
1	HFLM-1K	API49
APPLICATION		
CODE		

NOTICE TO PERSONS RECEIVING THIS DRAWING  
THE TECHNICAL MATERIEL CORPORATION claims proprietary right in the material disclosed hereon. This drawing is issued in confidence for engineering information only and may not be reproduced or used to manufacture anything shown hereon without permission from THE TECHNICAL MATERIEL CORPORATION to the user. This drawing is loaned for mutual assistance and is subject to recall at any time.