

5

4

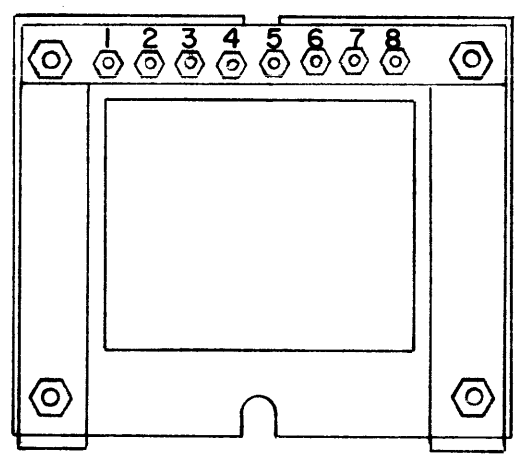
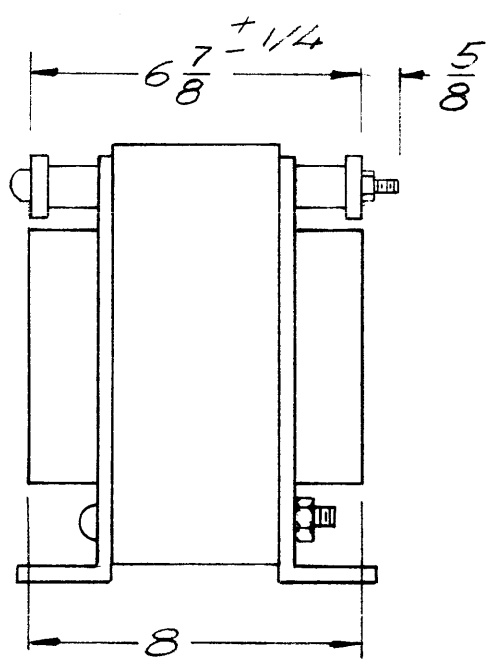
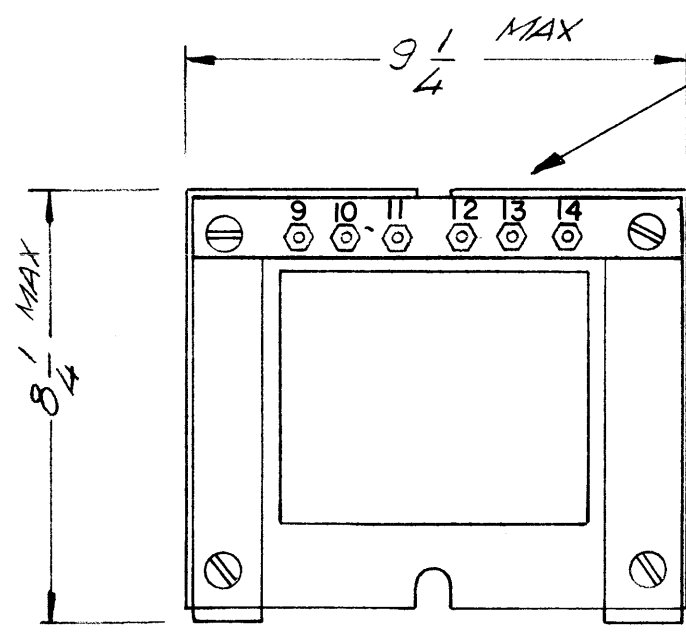
3

2

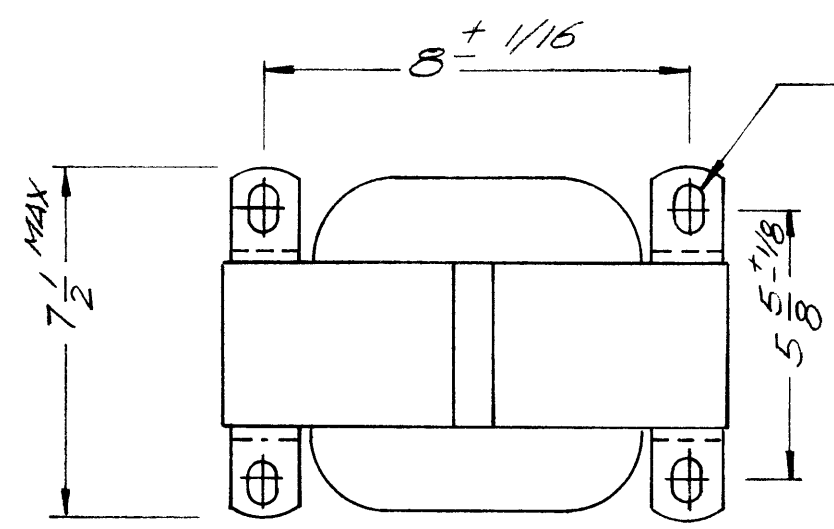
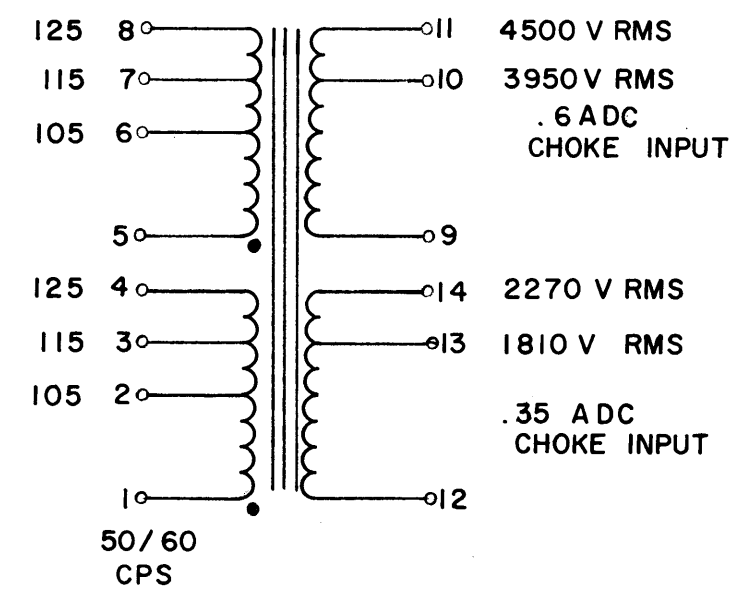
1

REVISIONS						
ZONE	LTR	DESCRIPTION	DATE	E.M.N.NO	DRAFT	CHKD APPD
	X	EXP RELEASE	8-19-70		GE	
	Ø	CORRECT RELEASE	9/13/71		W	GEA
	A	TOLERANCE CHG	12/5/71	20966	GE	W GEA
	B	NOTE ADDED	1/20/72	20525	RG	W G

MARK TMC PART NUMBER
1/8 HIGH GOTHIC WITH LATEST
REVISION LETTER



NOTE: XFMR TO BE
MANUFACTURED WITH
CLASS B HI TEMP
INSULATION.



REQ'D	ITEM	PART NUMBER	DESCRIPTION	SYM.
BUDETTI LIST OF MATERIAL				
FINAL APPROVAL		DATE	THE TECHNICAL MATERIEL CORP.	
MECH. DES.		DATE	MAMARONECK, NEW YORK	
ELECT. DES.		DATE	XFMR PLATE	
CHECKED		DATE		
DRAWN		DATE		
5401-30 (78678)		SIZE	CODE IDENT. NO.	DWG NO.
		B	82679	TF 413
		SCALE	SHEET	OF

QTY / UNIT	MODEL USED ON	ASS'Y NO.
1	HFLA-1K	AP152
1	HFLM-1K	AP150
APPLICATION		
	CODE	
NOTICE TO PERSONS RECEIVING THIS DRAWING THE TECHNICAL MATERIEL CORPORATION claims proprietary right in the material disclosed hereon. This drawing is issued in confidence for engineering information only and may not be reproduced or used to manufacture anything shown hereon without permission from THE TECHNICAL MATERIEL CORPORATION to the user. This drawing is loaned for mutual assistance and is subject to recall at any time.		

UNLESS OTHERWISE SPECIFIED
DIMENSIONS ARE IN INCHES
AND INCLUDE CHEMICALLY APPLIED
OR PLATED FINISHES

DECIMALS .X ± .05
.XX ± .01
.XXX ± .005

FRACTIONS 1/64
ANGLES 0° .30'

MATERIAL

FINISH