

5

4

3

2

1

REVISIONS

ZONE	LTR	DESCRIPTION	DATE	E.M.N.NO	DRAFT	CHKD	APPD
	X	EXP. RELEASE	9-15-67		H.G.	<i>[Signature]</i>	<i>[Signature]</i>
	Ø	ORIG. RELEASE FOR PROD	10-21-68		R.G.		<i>[Signature]</i>
	A	TERM 5 & 6 WAS 37.8V	1/28/70	19739	CV		<i>[Signature]</i>

SPECIFICATIONS

ELECTRICAL

PRIMARY WINDING

VOLTAGE: TERMINALS 1,2,3,4 115/230 V

FREQUENCY: 50/60 CPS

INSULATION TEST VOLTAGE: 1000 VOLTS

SECONDARY WINDING

VOLTAGE:

TERMINALS	VOLTAGE
5,6	41.2 V
7,8	14.8 V
9,10	240 V
10,11	28.4 V

MECHANICAL

CASE: POTTED FRAME

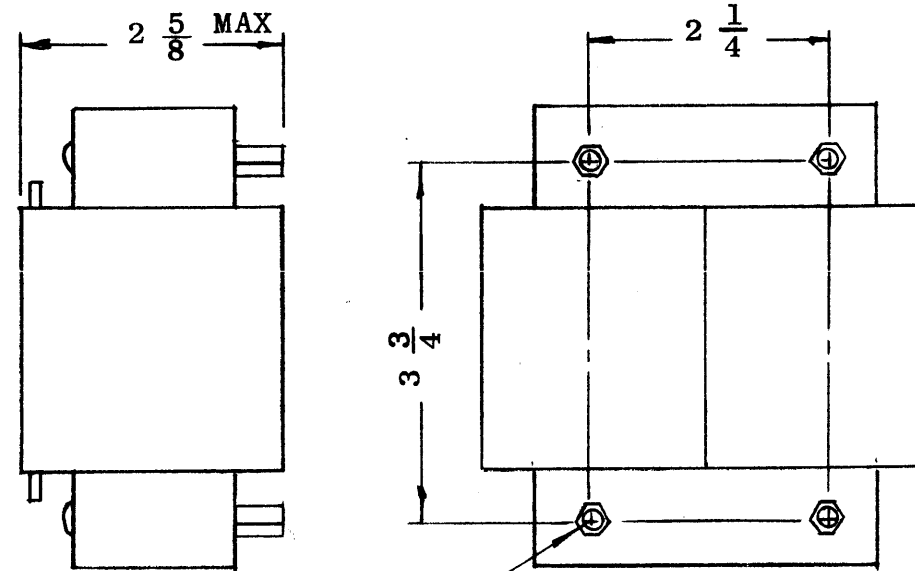
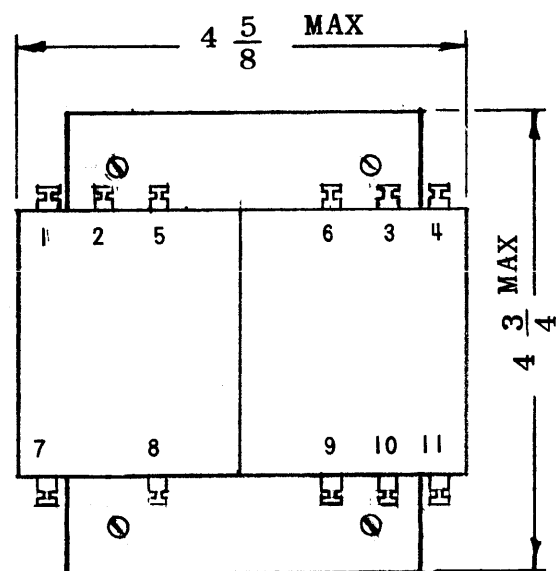
FINISH: BLACK MATT

DIMENSIONS: SHOWN PICTORIALY

TERMINALS: SOLDER TYPE

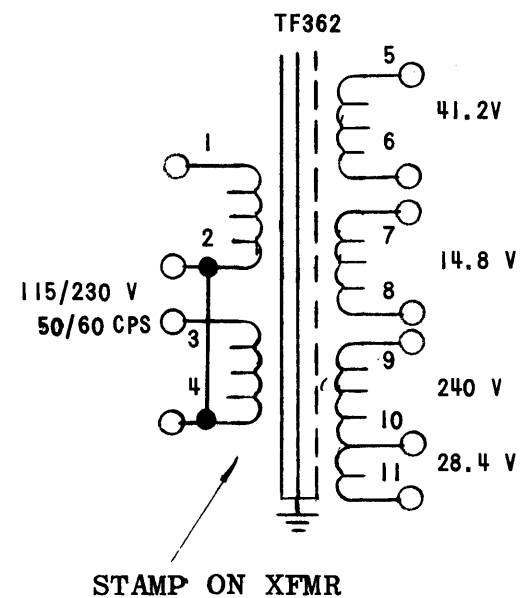
STAMPING: ACCORDING TO TMC SPEC S727 WHITE GOTHIC LETTERING AND LINE WORK

NOTE: MANUFACTURED IN ACCORDANCE WITH MIL-SPEC T-27-A EXCEPT THAT MIL SPEC T-27-A SHALL NOT APPEAR ON CASE AND QUALIFICATION TESTING NOT REQUIRED.



8-32 THREADS (4)

THE TECHNICAL MATERIEL CORP.
MAMARONECK NEW YORK



QTY / UNIT	MODEL USED ON	ASS'Y NO.
1	HFRR-4	
APPLICATION		
	CODE C	S401-30 (BTC#7872)

NOTICE TO PERSONS RECEIVING THIS DRAWING
THE TECHNICAL MATERIEL CORPORATION claims proprietary right in the material disclosed hereon. This drawing is issued in confidence for engineering information only and may not be reproduced or used to manufacture anything shown hereon without permission from THE TECHNICAL MATERIEL CORPORATION to the user. This drawing is loaned for mutual assistance and is subject to recall at any time.

UNLESS OTHERWISE SPECIFIED DIMENSIONS ARE IN INCHES AND INCLUDE CHEMICALLY APPLIED OR PLATED FINISHES

DECIMALS	FRACTIONS
.X ± .05	1/64
.XX ± .01	TOLS. ANGLES
.XXX ± .005	0° -30'

MATERIAL

FINISH

REQ'D	ITEM	PART NUMBER	DESCRIPTION	SYM.
	R. HOGAN		LIST OF MATERIAL	

FINAL APPROVAL	DATE
<i>[Signature]</i>	
MECH. DES.	DATE
ELECT. DES.	DATE
CHECKED	DATE
<i>[Signature]</i>	10/12/68
DRAWN	DATE
H.G.	9-15-67

THE TECHNICAL MATERIEL CORP.
MAMARONECK, NEW YORK

XFMR, POWER STEP UP, STEP DOWN

SIZE	CODE IDENT. NO.	DWG NO.	ISSUE
B	82679	TF 362	A

SCALE 1:2 SHEET OF

5

4

3

2

1