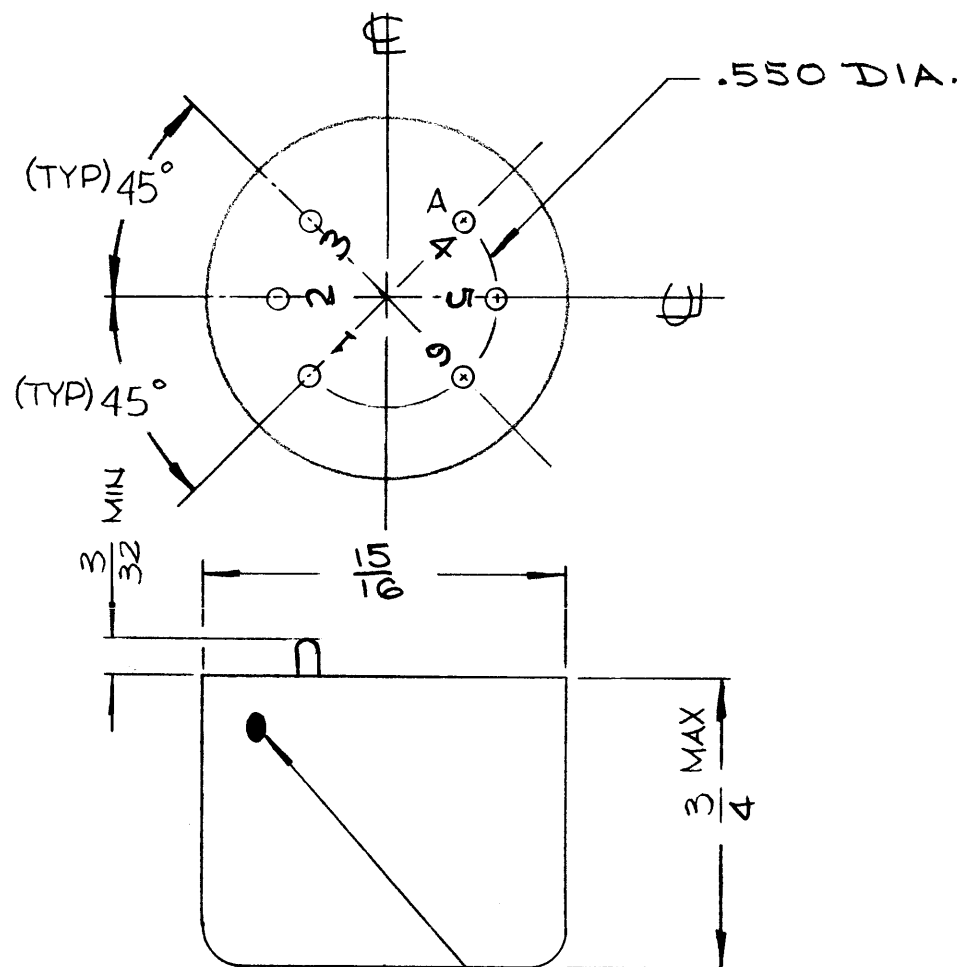
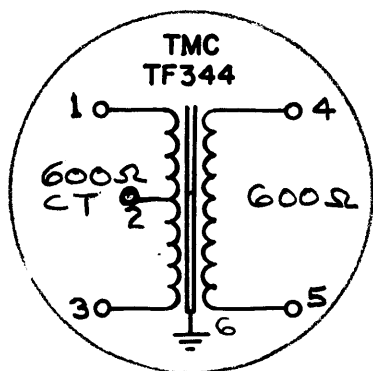


STANDARD DRAWING



RED DOT ON SIDE OF CASE ADJACENT TO PIN #1



REVISIONS						
SYM	DESCRIPTION	DATE	E.M.N. NO.	DRAFT	CHKD	APPD
X	EXPERIMENTAL RELEASE	6.2.66	#	WHD	Hb	AD
Ø	ORIGINAL RELEASE FOR PRODUCTION	6/27/66	Ø	CV		Jude

TF344

SPECIFICATIONS

ELECTRICAL:

IMPEDANCE: PRIMARY: 600Ω CT
 SECONDARY: 600Ω
 POWER RATING: 1 WATT MAX.
 FREQUENCY RESPONSE: 575 TO 3500HZ ±3db
 TERMINALS: PINS (.040 DIA.) GLASS HEADER
 CASE: CR STEEL, HOT TIN DIP, HERMITICALLY SEALED
 FINISH: S115 TMC GRAY (EXCEPT STUD END)

STAMPING:

TERMINALS SHALL BE MARKED AS SHOWN.
 SCHEMATIC OR CIRCUIT IDENTIFICATION AND TMC PART NUMBER (LOCATION OPTIONAL), IS TO BE MARKED ON UNIT.
 BLACK GOTHIC LETTERING & LINE WORK AS PER TMC S727.

NOTE

TO BE MANUFACTURED IN ACCORDANCE WITH MIL-SPEC T-27-A, EXCEPT THAT MIL-SPEC T-27-A SHALL NOT APPEAR ON CASE AND QUALIFICATION TESTING IS NOT REQUIRED.

REQ'D.	ITEM	PART NUMBER	DESCRIPTION	SYMBOL
LIST OF MATERIAL				
MATERIAL		THE TECHNICAL MATERIEL CORP. MAMARONECK, NEW YORK		
FINISH		TITLE TRANSFORMER, AUDIO		
SEE SPEC.		SEE SPEC.		
UNLESS OTHERWISE SPECIFIED DIMENSIONS ARE IN INCHES AND INCLUDE CHEMICALLY APPLIED OR PLATED FINISHES		DRAWN	DATE	FINAL APPROVAL
		WHD	6.2.66	[Signature]
		CHECKED	DATE	
		[Signature]	6-13-66	
		ELECT. DES.	DATE	
		[Signature]	6-29-66	
		MECH. DES.	DATE	
		[Signature]	6-29-66	
		SHEET		REV. LTR.
		TF344		Ø

2	CFA-2	
Q'TY./UNIT	MODEL USED ON	ASS'Y. NO.
SCALE	CODE	S401 30(BTC7331)

NOTES

THE CONTENTS OF THIS DRAWING ARE THE EXCLUSIVE PROPERTY OF THE TECHNICAL MATERIEL CORP. ITS UNAUTHORIZED USE OR REPRODUCTION IN WHOLE OR IN PART IS STRICTLY FORBIDDEN.

DECIMALS	FRACTIONS
.X ± .05	± 1/64
.XX ± .01	ANGLES
.XXX ± .005	± 0° 30'