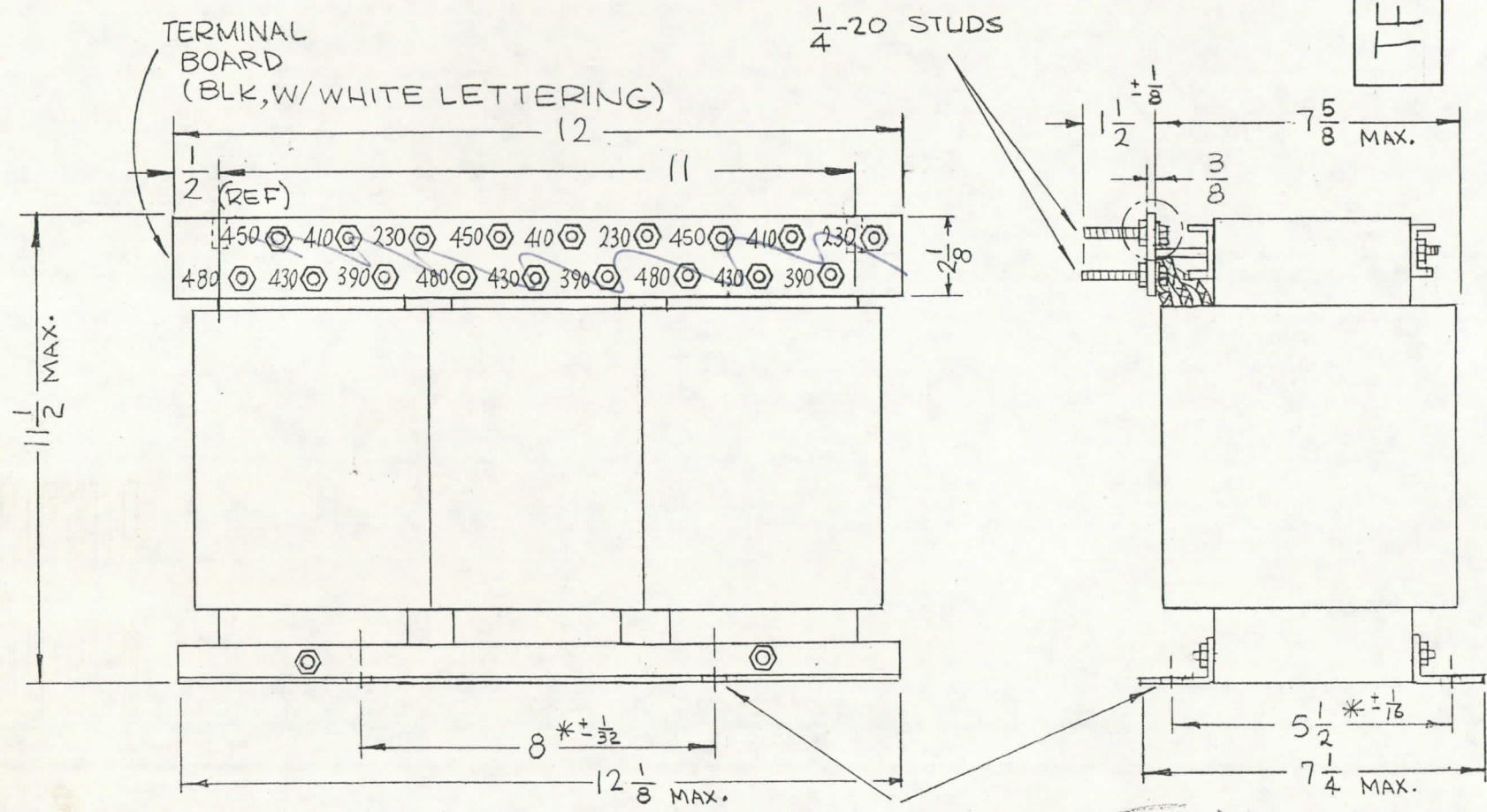
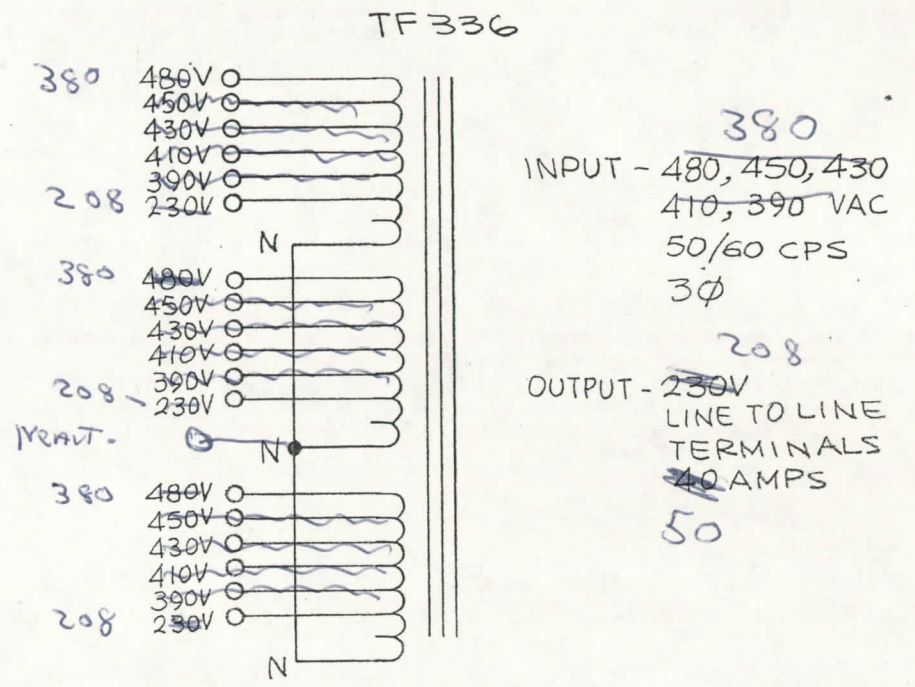


Keep

TF336 A



THE TECHNICAL MATERIEL CORPORATION
MAMARONECK
NEW YORK



SCHEMATIC - TO BE STAMPED ON XFMR, IN WHITE.

Note! Bring out React

SPECIFICATIONS:

WINDING DATA:

- INPUT: 480, 450, 430, 410, 390VAC, 50/60 CPS, 3PH
- OUTPUT VOLTAGE: 230 V AC
- OUTPUT CURRENT RATING: 40 AMP RMS
- BREAKDOWN TEST VOLTAGE 2000V AC.
- CASE-OPEN FRAME.
- FINISH-S115 SMOOTH GREY ENAMEL EXCEPT TERMINAL BOARD & TERMINALS.
- TERMINAL BOARD 3/8" THICK.

NOTE: MFG-IN ACCORDANCE WITH/MIL-T-27A EXCEPT MIL-7-27A SHALL NOT APPEAR ON CASE AND QUALIFICATION TESTING IS NOT REQUIRED.

NOTES

1	GPT-40K	
Q'TY./UNIT	MODEL USED ON	ASS'Y. NO.
SCALE NONE	CODE C	S401-30 (7168)

THE CONTENTS OF THIS DRAWING ARE THE EXCLUSIVE PROPERTY OF THE TECHNICAL MATERIEL CORP. ITS UNAUTHORIZED USE OR REPRODUCTION IN WHOLE OR IN PART IS STRICTLY FORBIDDEN.

REQ'D.	ITEM	PART NUMBER	DESCRIPTION	SYMBOL
F. BUDETTI LIST OF MATERIAL				
MATERIAL			THE TECHNICAL MATERIEL CORP. MAMARONECK, NEW YORK	
FINISH			TITLE TRANSFORMER, POWER, FIXED	
UNLESS OTHERWISE SPECIFIED DIMENSIONS ARE IN INCHES AND INCLUDE CHEMICALLY APPLIED OR PLATED FINISHES			DRAWN	DATE
DECIMALS .X ± .05 .XX ± .01 .XXX ± .005			11-30-65	6-24-66
FRACTIONS ± 1/64 ANGLES ± 0° 30'			CHECKED	DATE
TOLERANCES			6-24-66	6-24-66
			ELECT. DES.	DATE
			MECH. DES.	DATE
			FINAL APPROVAL	DATE
			TF 336 A	6/27/66
			SHEET	REV. LTR.
				B