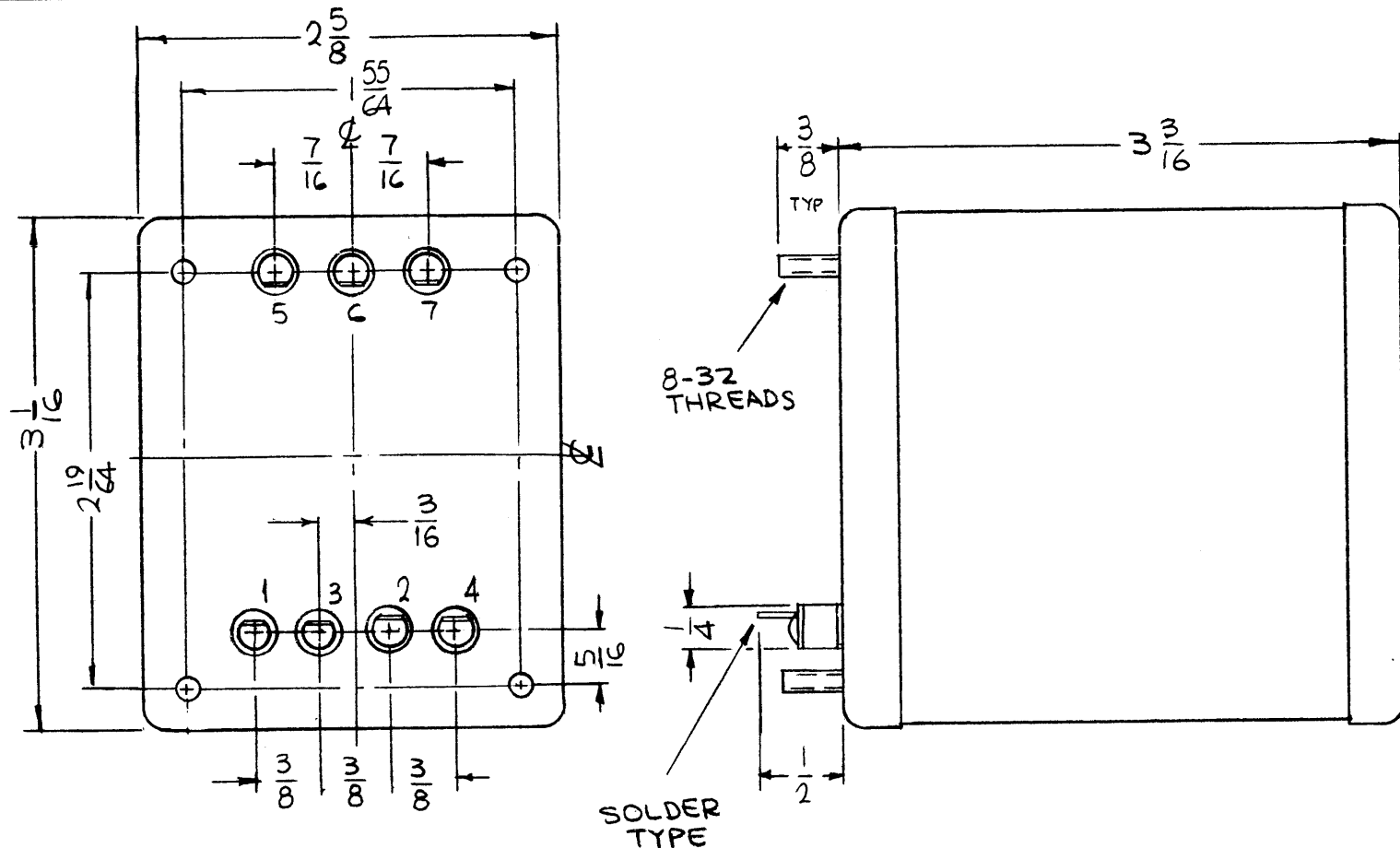


MOUNTING DETAIL



TF 318

REVISIONS

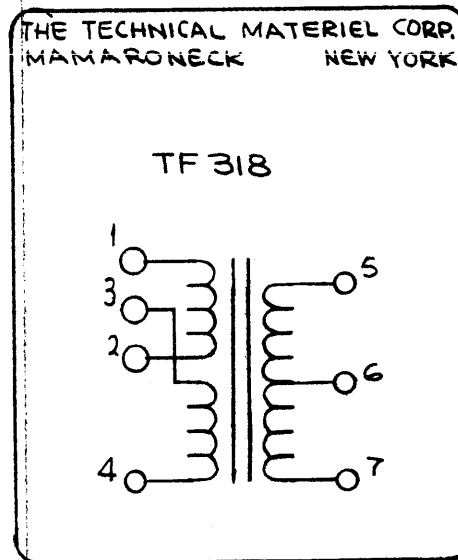
SYM	DESCRIPTION	DATE	E.M.N. NO.	DRAFT	CHKD	APPD
XI	3-3/16 WAS 3 1/8, ELE., MECH. SPEC. REV., MTG. DET. & MFG. NO. ADDED	12-1-65		Jc		
Ø	ORIGINAL RELEASE FOR PRODUCTION	12-2-65				
A	DIM 5/16 WAS 9/16	5.17.66	16254	wvw		

-ELECTRICAL SPECIFICATIONS-

1. TRANSFORMER RF OUTPUT
2. COIL DATA:
 - PRIMARY WINDING: TERM. 1 & 4, WITH TERM. 2 & 3 JUMPED
5K~IMPEDENCE
 - SECONDARY WINDING: TERM. 5 & 7
3K~IMPEDENCE

-MECHANICAL SPECIFICATIONS-

1. CASE DATA:
 - A. HERMETICALLY SEALED
 - B. RECTANGULAR STEEL CASE, MIL TYPE Y Y
 - C. BODY DIMENSIONS: 3-1/16 LONG
2-5/8 WIDE
3-3/16 HIGH
2. MOUNTING DATA:
 - A. MOUNTING METHOD: STUD
 - B. MOUNTING DIMENSIONS: (4) 8-32 STUDS ON 1-55/64 X 2-19/64 CENTERS 3/8 HIGH
3. TERMINAL DATA:
 - A. (7) TERMINALS
 - B. SOLDER TYPE 1/2 HIGH INSULATED
4. FINISH: SMOOTH GRAY ENAMEL (TMC SPEC S115) EXCEPT TERMINAL END
5. MARKING: METAL STAMP TERMINALS 1 THRU 7 AS SHOWN. MARK BOTTOM AS SHOWN PER TMC SPEC. S727.



TEST VOLTAGE 1500 VOLTS. (DC)

MANUFACTURE IN ACCORDANCE WITH MIL-SPECS. 27A EXCEPT MIL-SPECS SHALL NOT APPEAR ON CASE & TESTING QUALIFICATIONS NOT REQ.

NOTES

VLLA-1		ASS'Y. NO.
Q'TY./UNIT	MODEL USED ON	
SCALE	CODE	S401-30 (6633)

THE CONTENTS OF THIS DRAWING ARE THE EXCLUSIVE PROPERTY OF THE TECHNICAL MATERIEL CORP. ITS UNAUTHORIZED USE OR REPRODUCTION IN WHOLE OR IN PART IS STRICTLY FORBIDDEN.

REQ'D.	ITEM	PART NUMBER	DESCRIPTION	SYMBOL
--------	------	-------------	-------------	--------

F. BUDETTI LIST OF MATERIAL

MATERIAL _____ THE TECHNICAL MATERIEL CORP. MAMARONECK, NEW YORK

FINISH _____ TITLE XFMR, RF OUTPUT

UNLESS OTHERWISE SPECIFIED DIMENSIONS ARE IN INCHES AND INCLUDE CHEMICALLY APPLIED OR PLATED FINISHES		DRAWN	DATE	FINAL APPROV	DATE
DECIMALS .X ± .05 .XX ± .01 .XXX ± .005		CHECKED	DATE	TF318	A
FRACTIONS ± 1/64 ANGLES ± 0° 30'		ELECT. DES.	DATE		
TOLERANCES		MECH. DES.	DATE	SHEET	REV. LTR.