

REQ. PER UNIT	USED ON		
	MODEL	ASS'Y. NO.	DATE
	TPCK-1		6-21-65
	TPC-11		6-21-65
	SMC-1		6-21-65

TF312 A

SPECIFICATIONS

PRIMARY WINDING: VOLTAGE: 115/230 VAC
 FREQ.: 50/60 CPS
 PHASE: 1

SECONDARY WINDING: VOLTAGE: 123 VRMS
 CENTERTAP @ 61.5V
 CURRENT RATING: 1.1A

TERMINALS: No.: 7, TYPE: SOLDER LUG, FINISH: HOT TIN

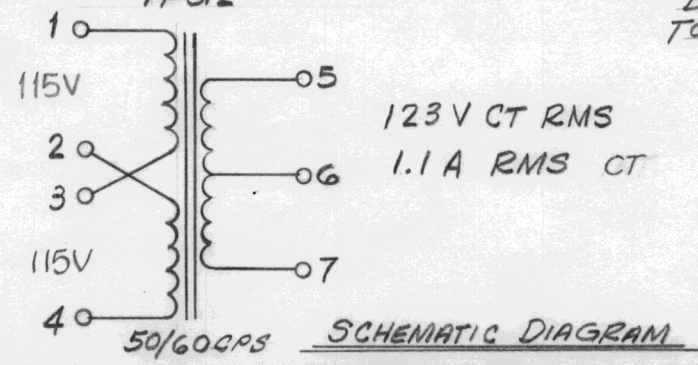
CASE FINISH: GRAY

STAMPING: MARKING PROCESS AS PER TMC SPEC. S-727. LETTERING TO BE BLACK GOTHIC LOCATED AS PER NOTE BELOW.

THE TECHNICAL MATERIEL CORP.
 MAMARONECK NEW YORK

TF 312

NOTE: LETTERING & SCHEMATIC TO BE MARKED ON TOP OF TRANSFORMER



SYM	DESCRIPTION	DATE	CH. NO.	DRAFTS	CHECKER	ENG. APP.
A	CLERICAL CHANGE	1/12/65	CC	J.V.	JCB	
Ø	ORIGINAL RELEASE FOR PRODUCTION	8-2-65	#	JC		
UNLESS OTHERWISE SPECIFIED DIMENSIONS ARE IN INCHES AND INCLUDE CHEMICALLY APPLIED OR PLATED FINISHES		SCALE	#			
DECIMALS .X ± .05 .XX ± .01 .XXX ± .005	TOLERANCES	FRACTIONS ± 1/32 ANGLES ± 0° 30'	CODE C	S401-30 (6525)		

REQ. ITEM	PART NO.	POSE	DESCRIPTION	SYMBOL
#			THE TECHNICAL MATERIEL CORP. MAMARONECK, NEW YORK	
#	STOCK SIZE		TRANSFORMER, POWER	
#	MATERIAL			
#	TYPE & TEMPER	H. AUSTIN	JCB	FINAL APPROVAL
#	HEAT TREAT. SPEC.			
#	FINISH & SPEC. NO.			

H. AUSTIN
 JCB
 R.A. HAY 8/2/65
 TF312 A