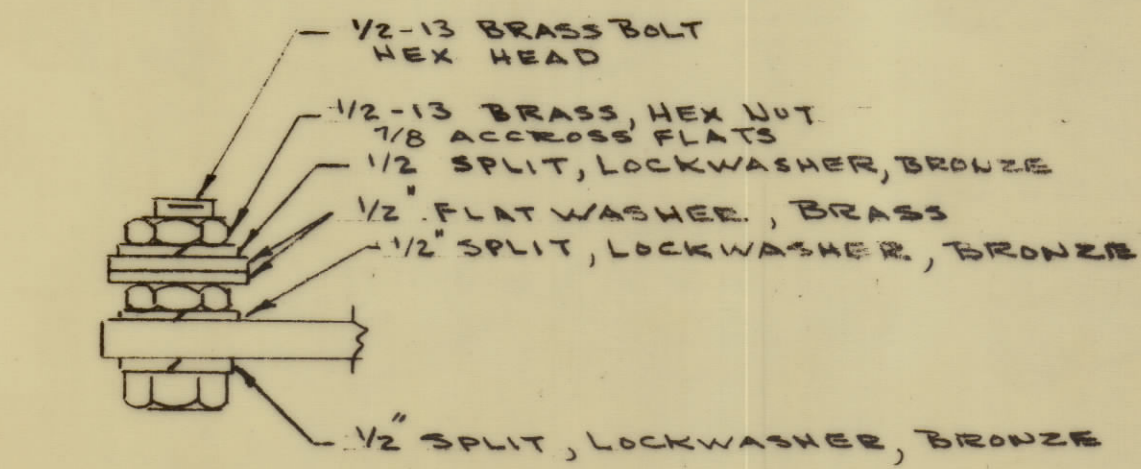
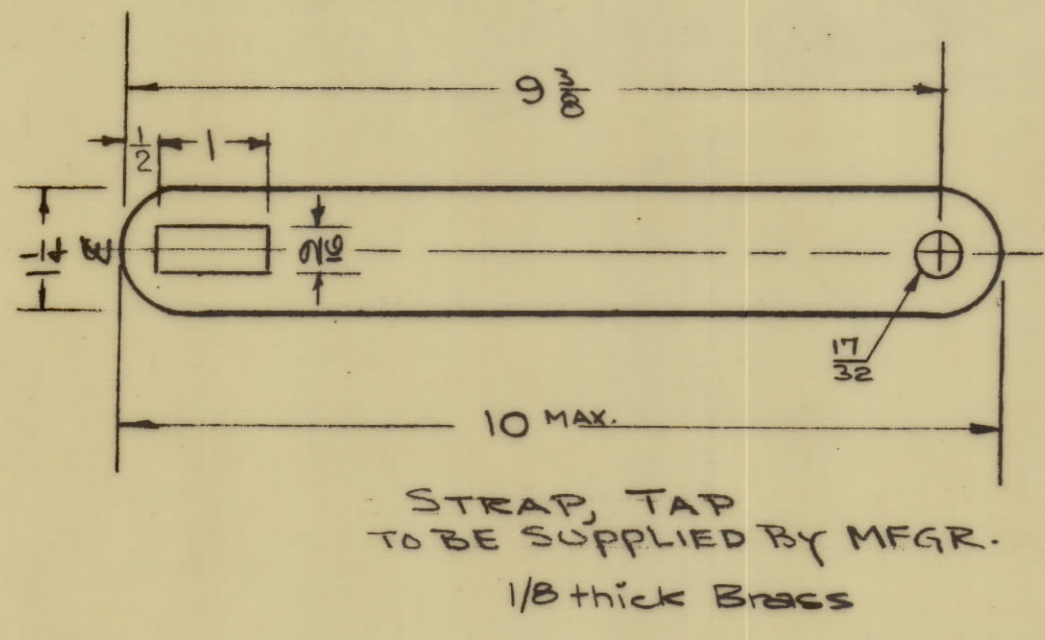


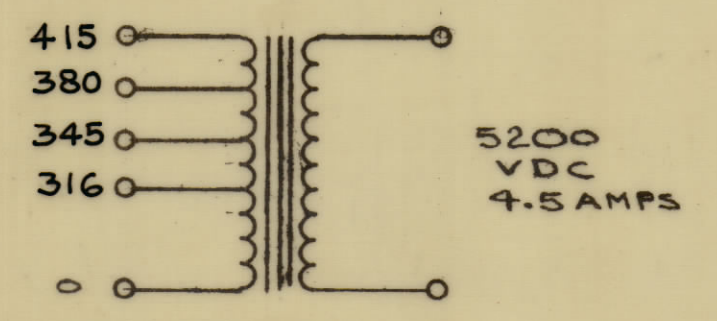
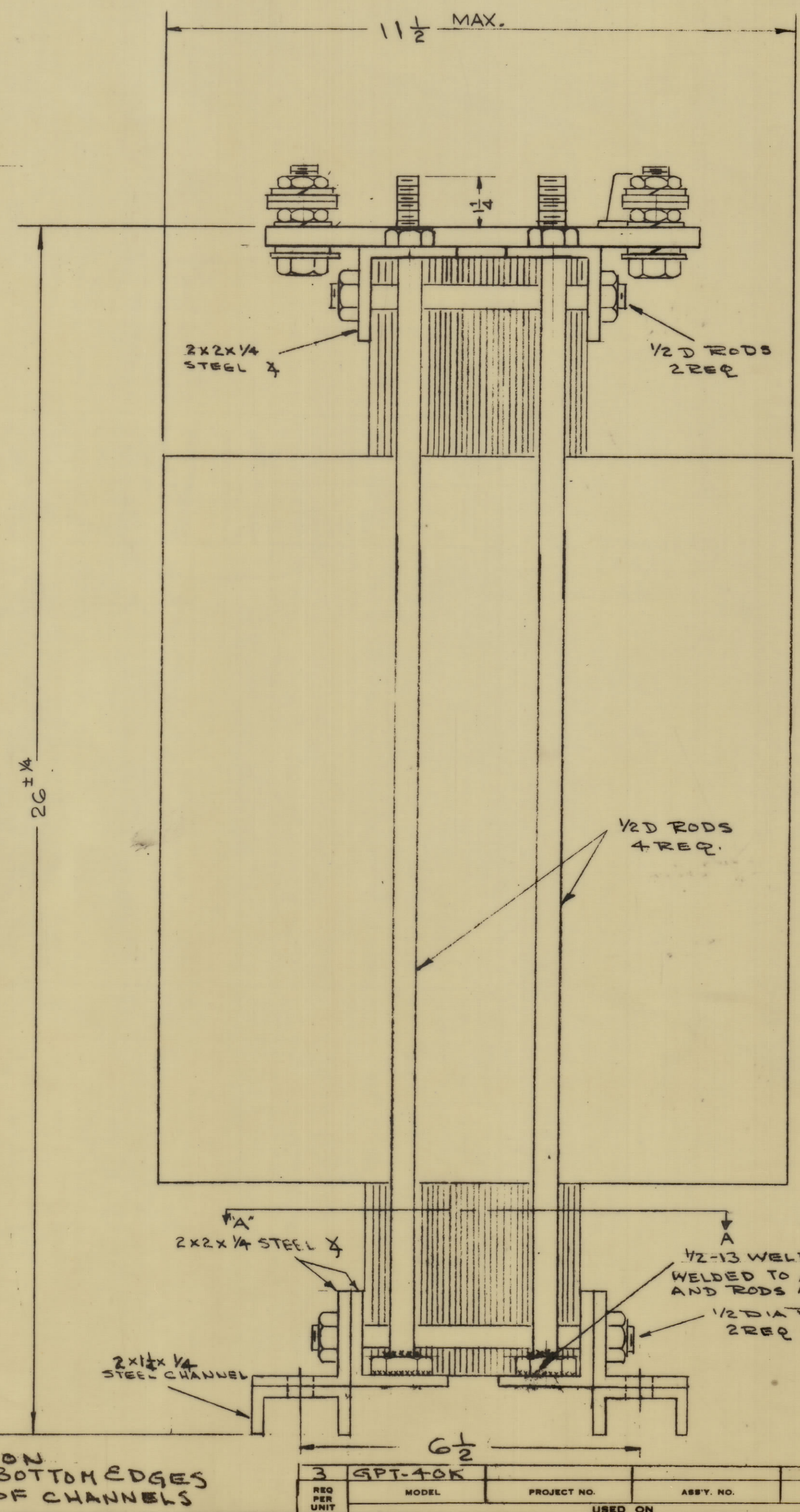
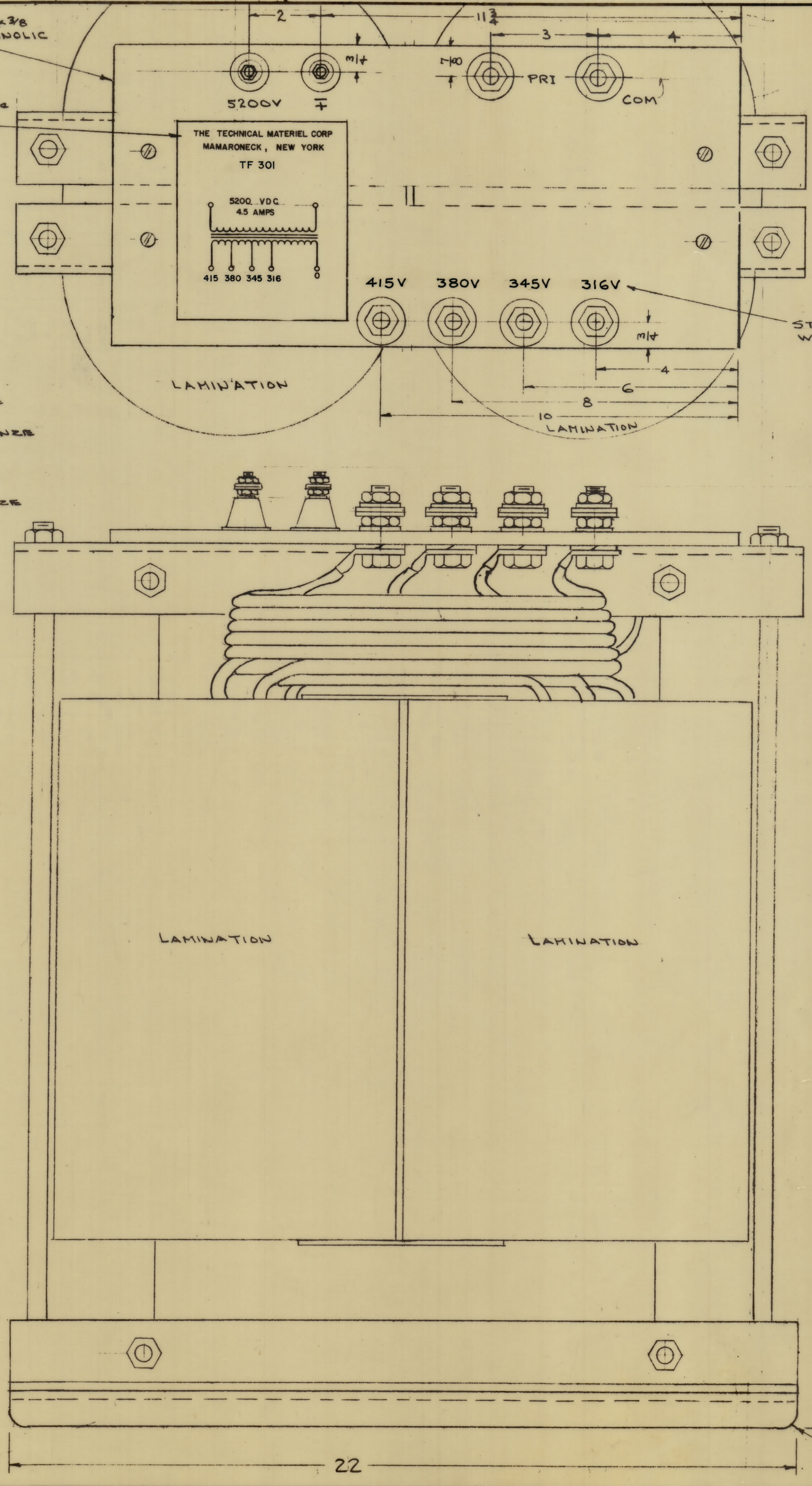
IF IT IS FOUND DESIRABLE TO CHANGE ANY TOLERANCE OR OTHER DETAIL SPECIFIED ON THIS DRAWING NOTIFY THE PURCHASER PROMPTLY.  
 MAXIMUM ALLOWABLE TOLERANCES HAVE BEEN DETERMINED AND DEVIATIONS WILL BE CAUSE FOR REJECTION. REMOVE ALL BURRS AND SHARP EDGES



TERMINAL DETAIL  
 G REQ.



ORIGINAL RELEASE FOR PRODUCTION	6380	GE
EXPERIMENTAL RELEASE	10764	MB
ISSUE ITEM	CHANGED FROM	DATE
TOLERANCES		SCALE: S401-30 (BTC63B1)
ALL DEC. DIM. ±	DRILL PUNCH, COMMERCIAL STOCK	
OTHERS FRACTIONAL DIM. ±	SIZES AND MANUFACTURERS	
ANGULAR DIM. ±	TOLERANCES ARE NOT INCLUDED.	

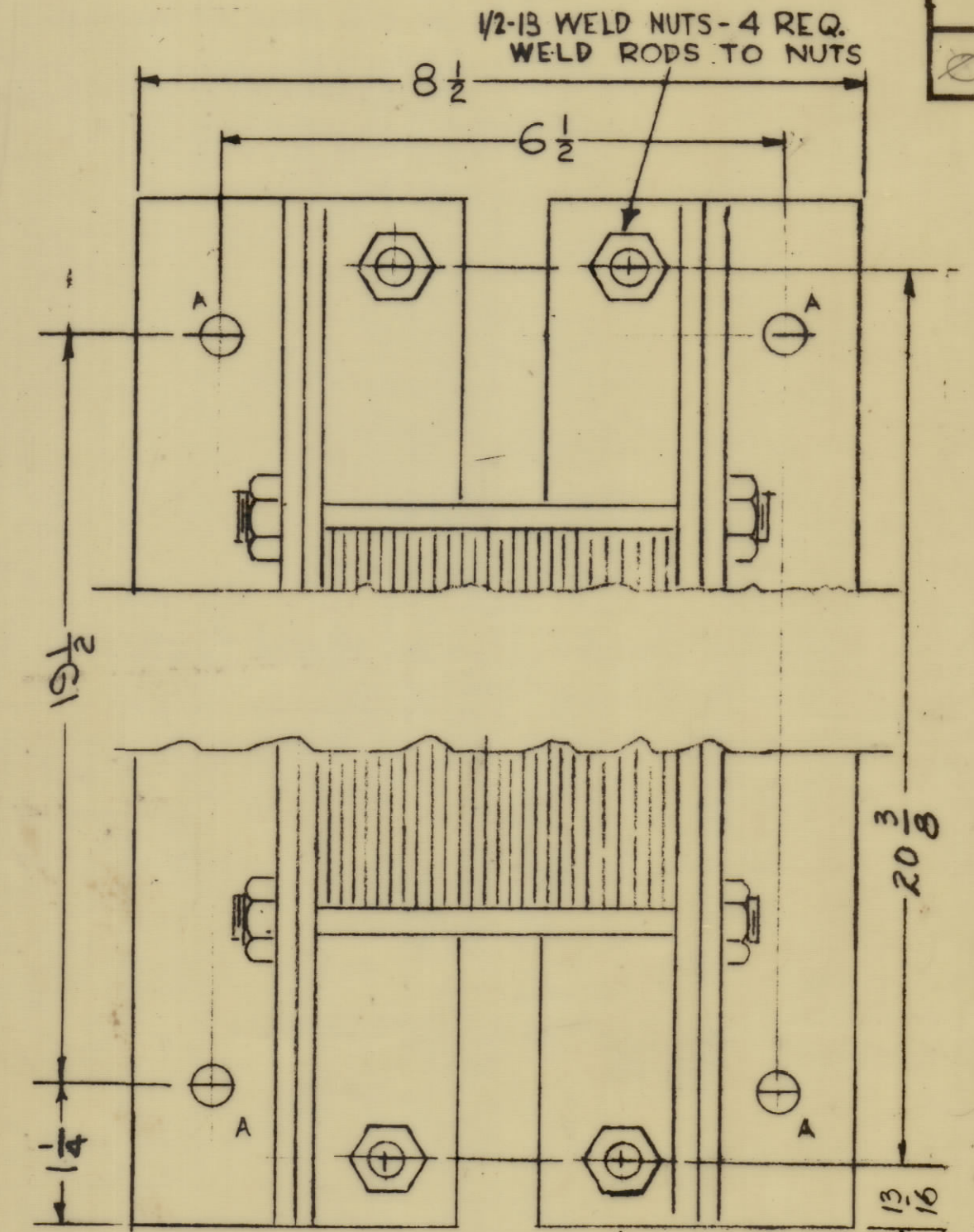


ELECTRICAL SPEC'S  
 WINDING: TWO (2)  
 INPUT: 316, 345, 380, 415 V AC, 50/60 Hz, 1 φ  
 CURRENT RATING: 4.5 AMPS (3.67 AMPS RMS)  
 SECONDARY WINDING ~ 5200 VDC  
 WORKING VOLTAGE ~ 12,000  
 TEST VOLTAGE ~ 25,000  
 MECHANICAL SPEC'S:  
 CONSTRUCTION: OPEN FRAME TYPE  
 FINISH: TMC SMOOTH GRAY ENAMEL  
 (EXCEPT TERMINAL STRIP & TERMINALS)

NOTE:  
 MANUFACTURED IN ACCORDANCE WITH MIL SPEC T-27-A EXCEPT THAT MIL SPEC T-27-A SHALL NOT APPEAR ON CASE AND QUALIFICATION TESTING IS NOT REQUIRED.

- SPECIFICATIONS -

Pri. Wire: Double Daglass wgt per coil. 60 lbs.  
 Sec. Wire: Double Polythermalege wgt. per coil. 60 lbs.  
 Layer Insulation: Fishpaper  
 Winding Insulation: 20 Layers .010 Fibremate under sec.  
 15 Layers .010 Fibremate over sec.  
 Lamination: Transformer Grade C. Annealed after cutting.  
 Total wgt. required. 260 lbs.  
 Impregnation: Preheat laminated unit 12 hours at 250° F.  
 Vacuum Varnish impregnate.  
 Bake 15 hours at 275° F.  
 Repeat Vacuum Varnish impregnation and bake for 15 hrs.  
 Terminal Hardware: All Brass Nickel Plated.



Mounting Detail A-A  
 A-A = 1/8 DIA - 4 HOLES

REQ. ITEM	PART NO.	DESCRIPTION	SYMBOL
STOCK SIZE			
MATERIAL WEIGHT PER PC			
TYPE & TEMPER			
HEAT TREAT. SPEC.			
FINISH & SPEC. NO.			
THE TECHNICAL MATERIEL CORP. MAMARONECK, NEW YORK		H.V. TRANSFORMER	
REQ. PER UNIT	MODEL	PROJECT NO.	DATE
		ASSY. NO.	
		USED ON	

TF301