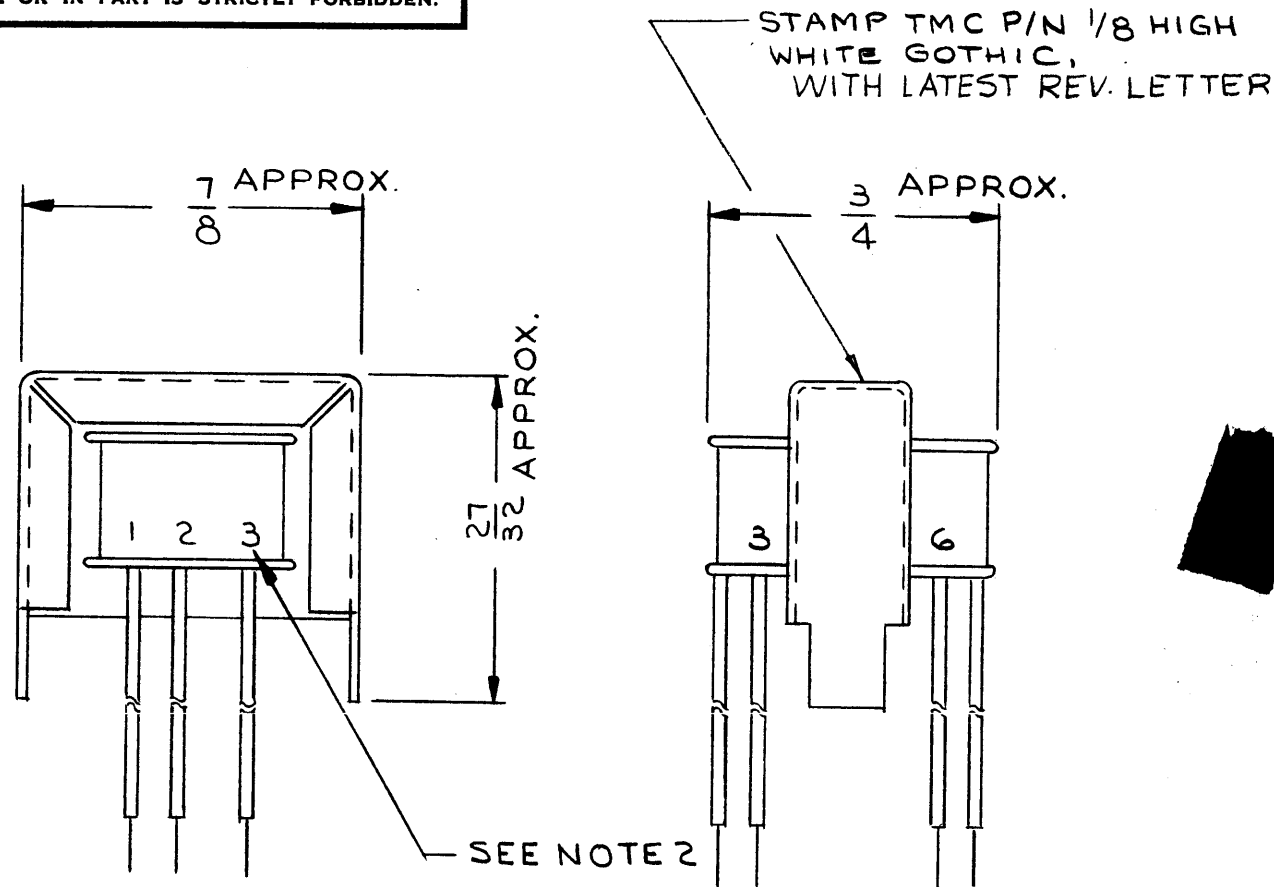


TF 270 B

THE CONTENTS OF THIS DRAWING ARE THE EXCLUSIVE PROPERTY OF THE TECHNICAL MATERIEL CORP. ITS UNAUTHORIZED USE OR REPRODUCTION IN WHOLE OR IN PART IS STRICTLY FORBIDDEN.



SPECIFICATIONS :

TYPE = INTERSTAGE
IMPEDANCE

PRIMARY = 10KΩ CT

SECONDARY = 1.5KΩ CT

DIRECT CURRENT RATING = PRIMARY : .5MA

POWER RATING = 100 MW

TURNS RATIO, PRI. TO SEC. = NOT RATED

FREQUENCY DATA

FREQUENCY RANGE = 50-10,000 CPS

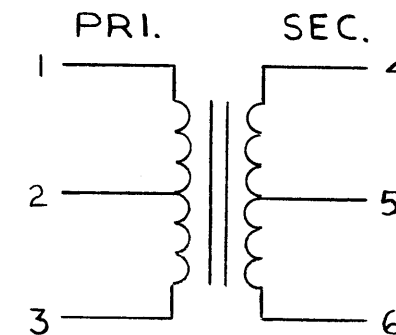
DB VARIATION OVER FREQ. RANGE = 3 DB

CASE DATA

MATERIAL = ENCAPSULATED COLOR = BLACK

TERMINAL DATA

WIRE LEADS



NOTES:-

- 1- ALL DIMENSIONS ARE AFTER ENCAPSULATION.
- 2- ALL TERMINAL NO.'S TO BE STAMPED IN WHT.

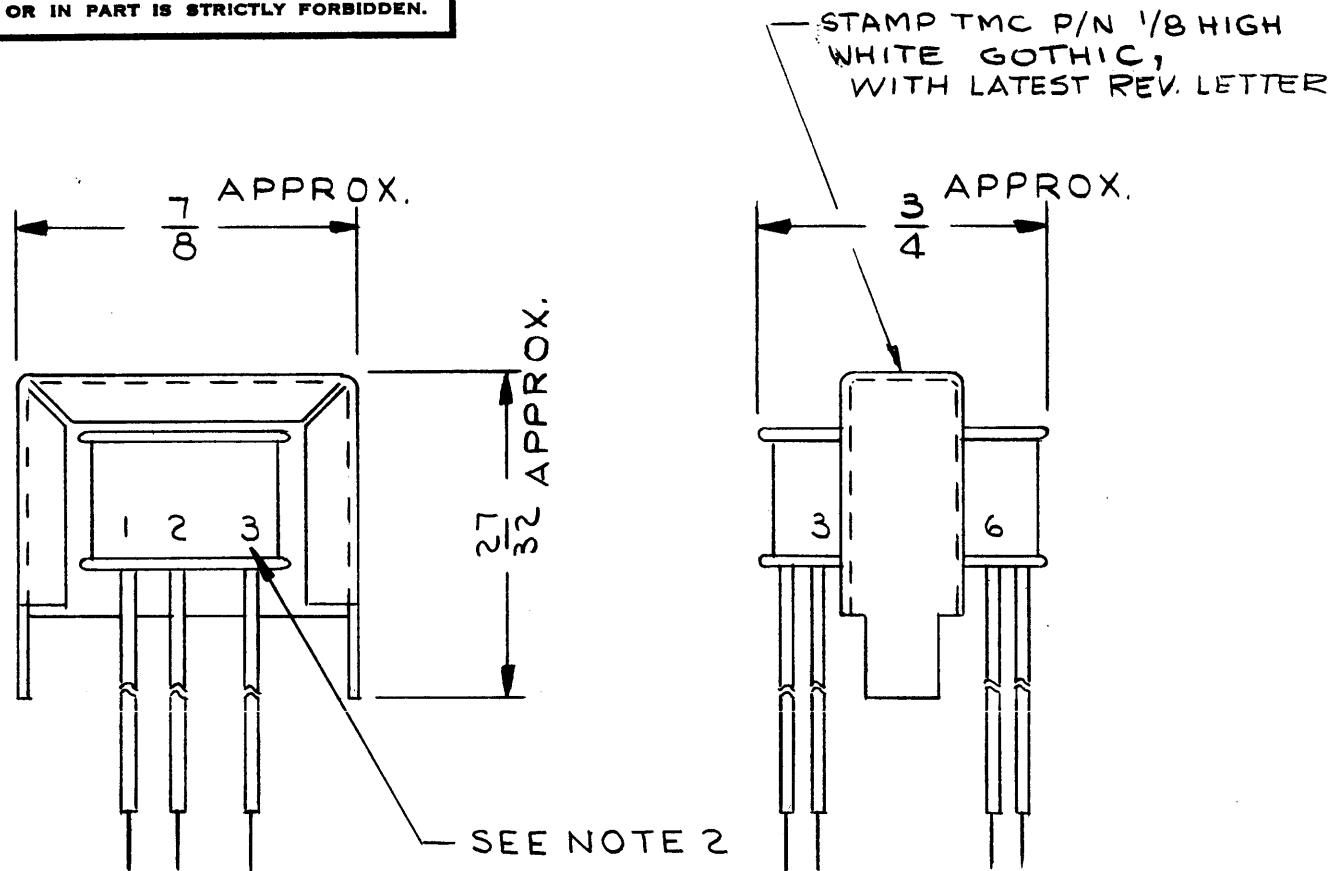
B	DIR. CURRENT RATING WAS "NOT RATED"	1.5.64	13186	hbs	[Signature]	[Signature]
A	WHITE "ADD. TO STAMP, CASE COLOR ADDED"	9.17.64	12381	hbs	[Signature]	[Signature]
0	ORIGINAL RELEASE FOR PRODUCTION	5/12/64	0	A.M.	[Signature]	[Signature]
SYM	DESCRIPTION	DATE	CH. NO.	DRAFTS	CHECKER	ENG. APP.
UNLESS OTHERWISE SPECIFIED:		SCALE: NONE S-401-30				
DIMENSIONS ARE IN INCHES		MAXIMUM ALLOWABLE TOLERANCES HAVE BEEN DETERMINED AND ANY DEVIATIONS WILL BE CAUSE FOR REJECTION.				
TOLERANCES ON FRACTIONS ± 1/64 DECIMALS ± .05 ANGLES ± 1/2°		REMOVE ALL BURRS AND SHARP EDGES				

2	VLR-1	A-3021		
REQ. PER UNIT	MODEL	SECTION	ASS'Y. NO.	DATE
USED ON				

REQ. ITEM	PART NO.	M. GELLMAN	DESCRIPTION	SYMBOL
---		THE TECHNICAL MATERIEL CORP. MAMARONECK, NEW YORK		
---		TRANSFORMER, AUDIO, INTERSTAGE		
---		MATERIAL		
---		J. LESHINSKI	[Signature]	[Signature]
TYPE & TEMPER	HEAT TREAT. SPEC.	DRAWN	CHECKED	FINAL APPROVAL
---		[Signature]	[Signature]	TF 270 B
FINISH & SPEC. NO.		ELEC. DES. APP.	MECH. DES. APP.	

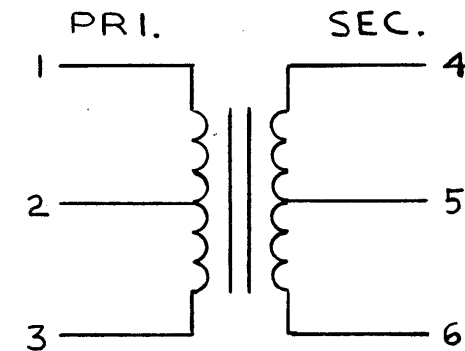
TF 271 C

THE CONTENTS OF THIS DRAWING ARE THE EXCLUSIVE PROPERTY OF THE TECHNICAL MATERIEL CORP. ITS UNAUTHORIZED USE OR REPRODUCTION IN WHOLE OR IN PART IS STRICTLY FORBIDDEN.



SPECIFICATIONS:

TYPE = LINE OUTPUT
 IMPEDANCE
 PRIMARY = 5KΩ CT
 SECONDARY = 600Ω CT
 DIRECT CURRENT RATING = NOT RATED
 POWER RATING = 10 MW
 TURNS RATIO, PRI. TO SEC. = NOT RATED
 FREQUENCY DATA
 FREQUENCY RANGE = 50-10,000 CPS
 DB VARIATION OVER FREQ. RANGE = 3 DB
 CASE DATA
 MATERIAL = ENCAPSULATED COLOR = BLACK
 TERMINAL DATA
 WIRE LEADS



NOTES:-

- 1-ALL DIMENSIONS ARE AFTER ENCAPSULATION.
- 2-ALL TERMINAL NO'S TO BE STAMPED IN WHT.

C	CLERICAL CHANGE A3201 WAS A3021	1.21.65	-	SL	@	
B	CLERICAL CHANGE	9.30.64	-	WB	@	
A	CASE COLOR ADDED TO SPECS "WHITE" ADDED TO STAMP NOTE	9.17.64	12381	WB	@	
O	ORIGINAL RELEASE FOR PRODUCTION	5/12/64	0	A.M.	@	
SYM	DESCRIPTION	DATE	CH. NO.	DRAFTS	CHECKER	ENG. APP.
UNLESS OTHERWISE SPECIFIED:		SCALE: NONE S-401-30				
DIMENSIONS ARE IN INCHES		MAXIMUM ALLOWABLE TOLERANCES HAVE BEEN DETERMINED AND ANY DEVIATIONS WILL BE CAUSE FOR REJECTION.				
TOLERANCES ON FRACTIONS ± 1/64 DECIMALS ± .005 ANGLES ± 1/2°		REMOVE ALL BURRS AND SHARP EDGES				
				VLR-1		A3201
				MODEL	SECTION	ASS'Y. NO.
				REQ. PER UNIT		DATE
				USED ON		

REQ.	ITEM	PART NO.	M. GELLMAN	DESCRIPTION	SYMBOL
			THE TECHNICAL MATERIEL CORP. MAMARONECK, NEW YORK		
		STOCK SIZE	TRANSFORMER, AUDIO OUTPUT		
		MATERIAL			
			J. LESHINSKI	@	RIC
		TYPE & TEMPER	HEAT TREAT. SPEC.	DRAWN	CHECKED
					FINAL APPROVAL
		FINISH & SPEC. NO.			TF 271 C
			ELEC. DES. APP.	MECH. DES. APP.	

SPECIFICATIONS:

TYPE - AUDIO OUTPUT

IMPEDANCE:

PRIMARY - 500 Ω, C.T.

SECONDARY - 4 Ω

DIRECT CURRENT - NOT RATED

MAX. AUDIO OPERATING LEVEL - 1 WATT

TURNS RATIO, PRIMARY TO SECONDARY - NOT RATED

FREQUENCY DATA:

FREQ. RANGE - 50 TO 10,000 CPS

DB VARIATION OVER FREQ RANGE - WITHIN 3DB.

CASE DATA:

TYPE - FULLY INCLOSED

MATERIAL - STEEL

FINISH - S-115, SMOOTH GRAY ENAMEL EXCEPT
TERMINAL END.

HERMETICALLY SEALED

TERMINAL DATA:

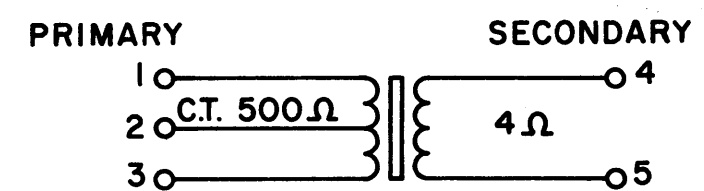
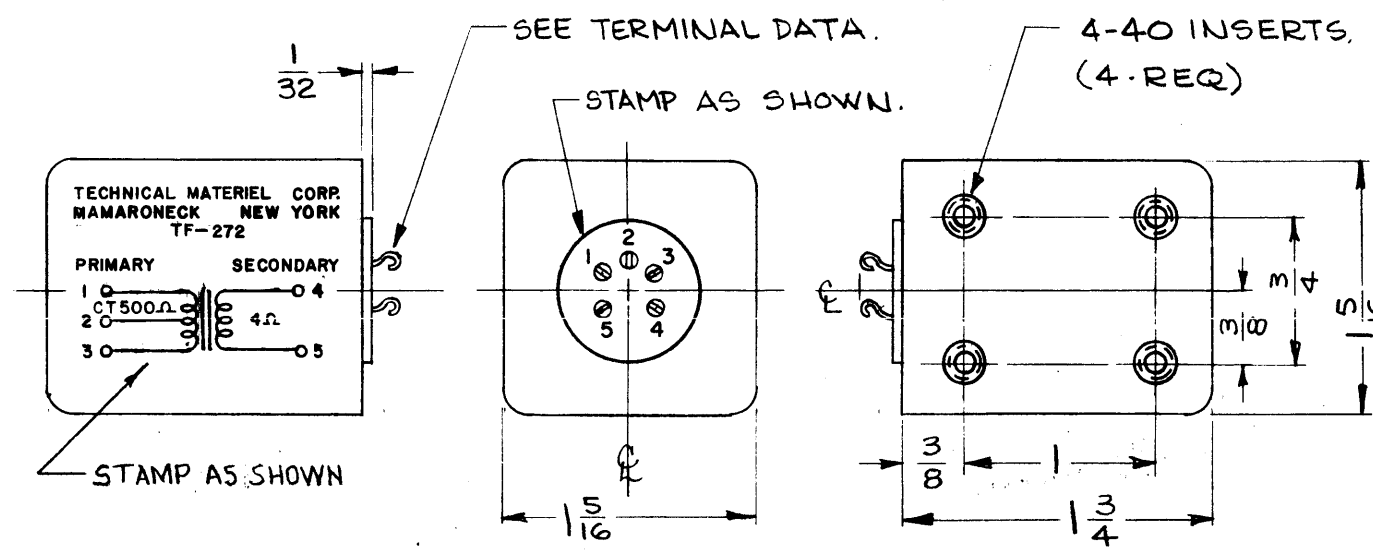
QUANTITY - 5

TYPE - SOLDER STUDS

TF 272

REVISIONS.

SYM	DESCRIPTION	DATE	E.M.N. NO.	DRAFT	CHKD	APPD
O	ORIGINAL RELEASE FOR PRODUCTION	5-12-64	O	A.M.	(Signature)	
A	STAMP WAS "TMC PART NO."	9-25-64	12457	J.L.	(Signature)	



—SCHEMATIC DIAGRAM—

REQ'D.	ITEM	PART NUMBER	DESCRIPTION	SYMBOL
--------	------	-------------	-------------	--------

M. GELLMAN LIST OF MATERIAL

MATERIAL: SEE CASE DATA SPEC. TITLE: THE TECHNICAL MATERIEL CORP. MAMARONECK, NEW YORK

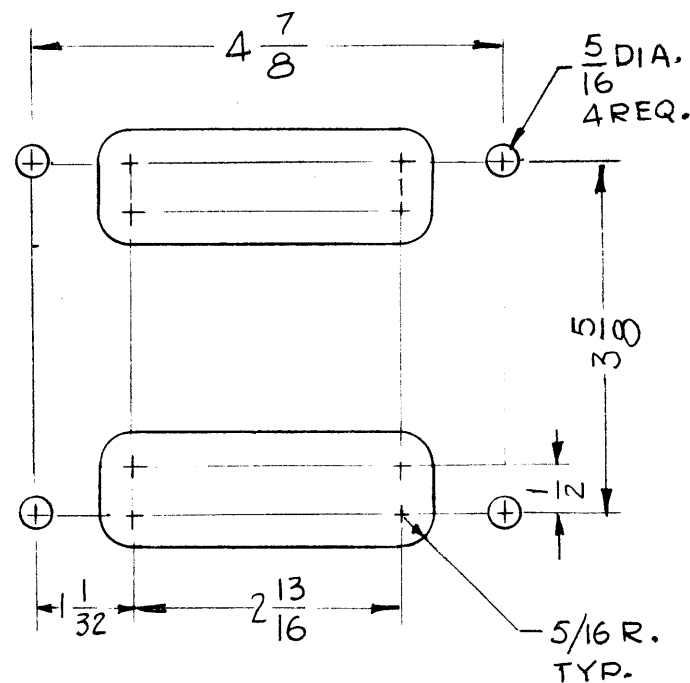
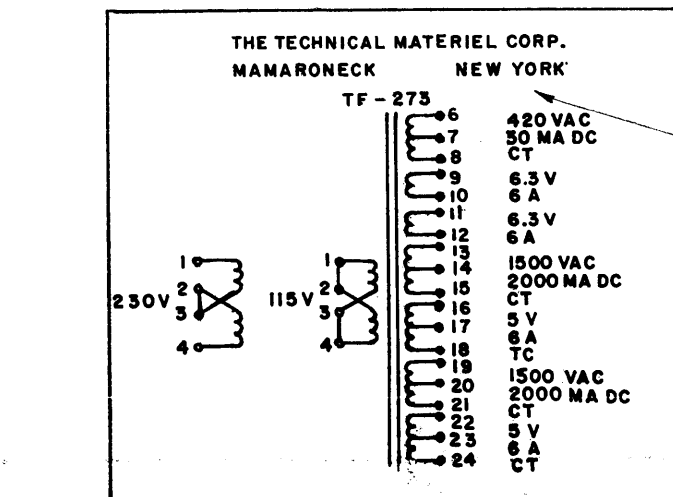
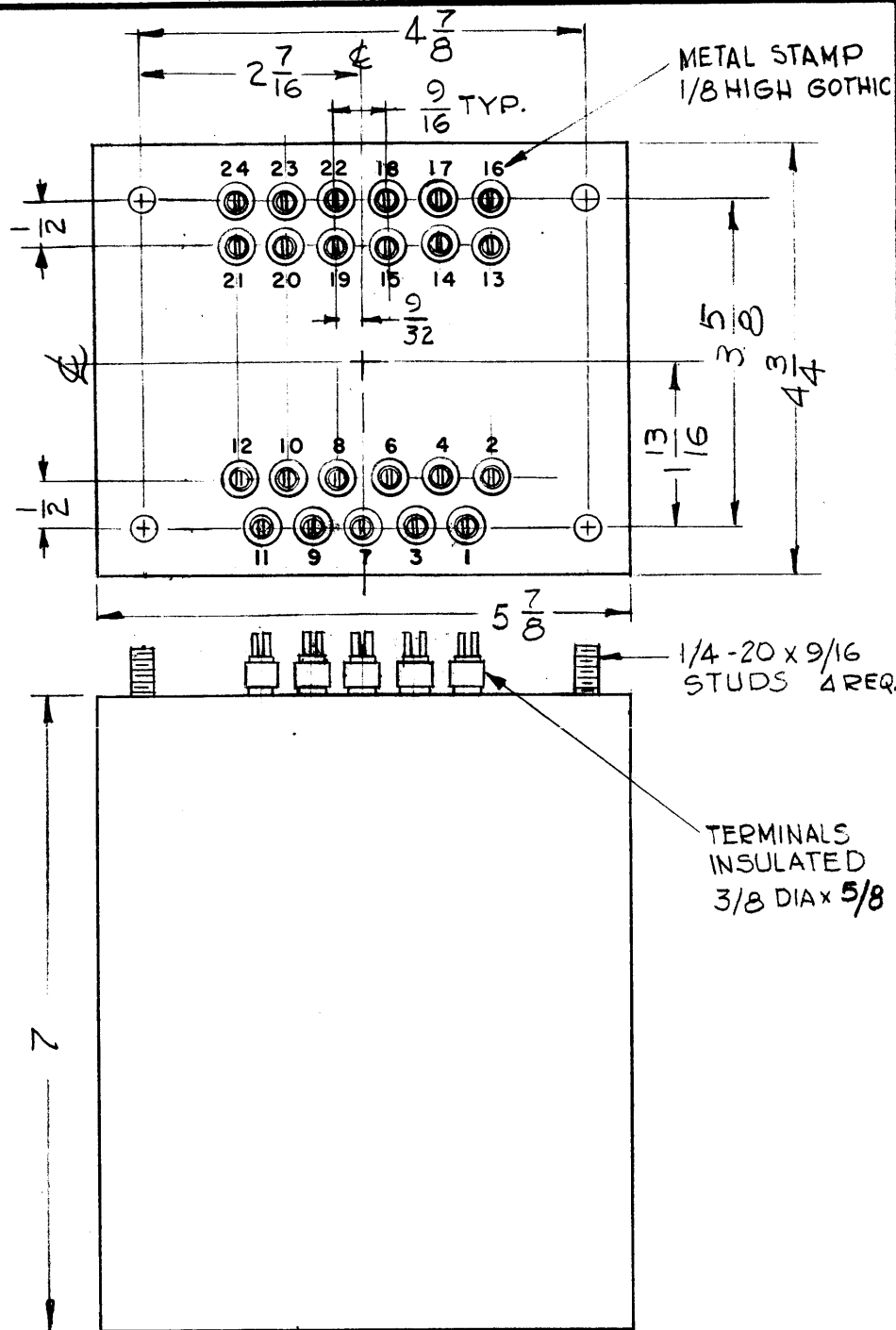
FINISH: SEE CASE DATA SPEC. TITLE: TRANSFORMER, AUDIO OUTPUT

UNLESS OTHERWISE SPECIFIED DIMENSIONS ARE IN INCHES AND INCLUDE CHEMICALLY APPLIED OR PLATED FINISHES	DRAWN: <i>S. Jensen</i> DATE: 8-9-63	FINAL APPROVAL: <i>RJC</i> DATE:
DECIMALS: .X ± .05, .XX ± .01, .XXX ± .005	CHECKED: <i>(Signature)</i> DATE: 5-7-64	DATE: 5-7-64
FRACTIONS: ± 1/64, ANGLES: ± 0° 30'	ELECT. DES.:	MECH. DES.:
TOLERANCES:	TF 272	A
	SHEET	REV. LTR.

1	VLR-1	AX-434
QTY./UNIT	MODEL USED ON	ASSY. NO.
SCALE: NONE	CODE: C	8401-30

NOTES

THE CONTENTS OF THIS DRAWING ARE THE EXCLUSIVE PROPERTY OF THE TECHNICAL MATERIEL CORP. ITS UNAUTHORIZED USE OR REPRODUCTION IN WHOLE OR IN PART IS STRICTLY FORBIDDEN.



MOUNTING DETAIL

TF-273

REVISIONS

SYM	DESCRIPTION	DATE	E.M.N. NO.	DRAFT	CHKD	APPD
Ø	ORIGINAL RELEASE FOR PRODUCTION	1/2/69				

SPECIFICATIONS

- TRANSFORMER, POWER, BIAS SUPPLY
- CASE DATA:
STEEL, HERMETICALLY SEALED, SMOOTH GRAY ENAMEL FINISH PER TMC SPEC. S-115, EXCEPT TERMINAL END.
- PRIMARY WINDING:
115/230V
50/60 CPS
- SECONDARY WINDINGS:
 - 1500 V. CT AT 200 MA FOR 750 INTO CHOKE INPUT FILTER
 - 1500 V. CT AT 200 MA FOR 750 VOLTS DC INTO CHOKE INPUT FILTER
 - 5 VOLTS C.T. AT 6 AMPS
 - 5 VOLTS C.T. AT 6 AMPS
 - 6.3 VOLTS AT 6 AMPS
 - 6.3 VOLTS AT 6 AMPS
 - 420 V C.T. AT 30MA FOR 210 VOLTS INTO R-C FILTER
 INSULATION: 2000 VOLTS
- TERMINALS: INSULATED TYPE 3/8 DIA. x 5/8 HIGH
- SCHMATIC DIAGRAM TO BE PLACED ON END OPPOSITE TERMINAL END,

NOTE:

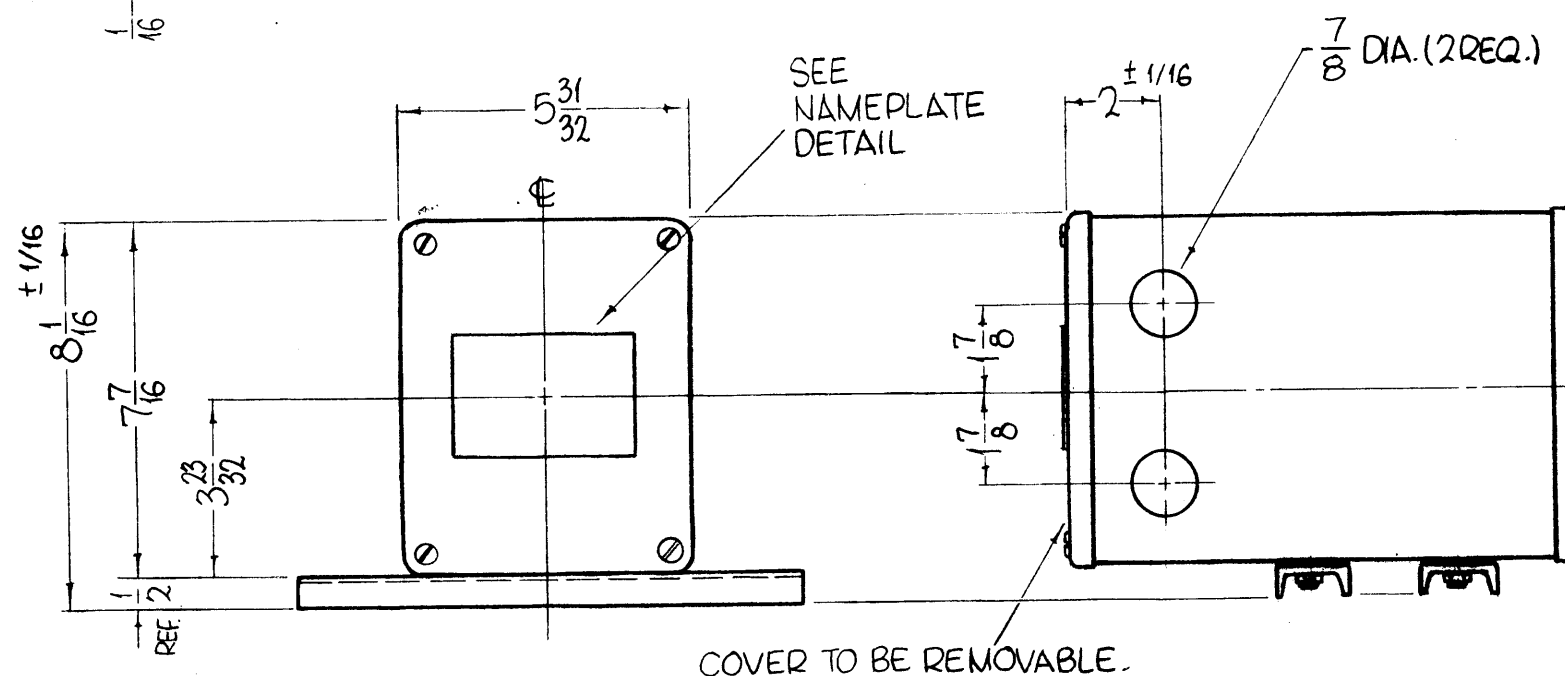
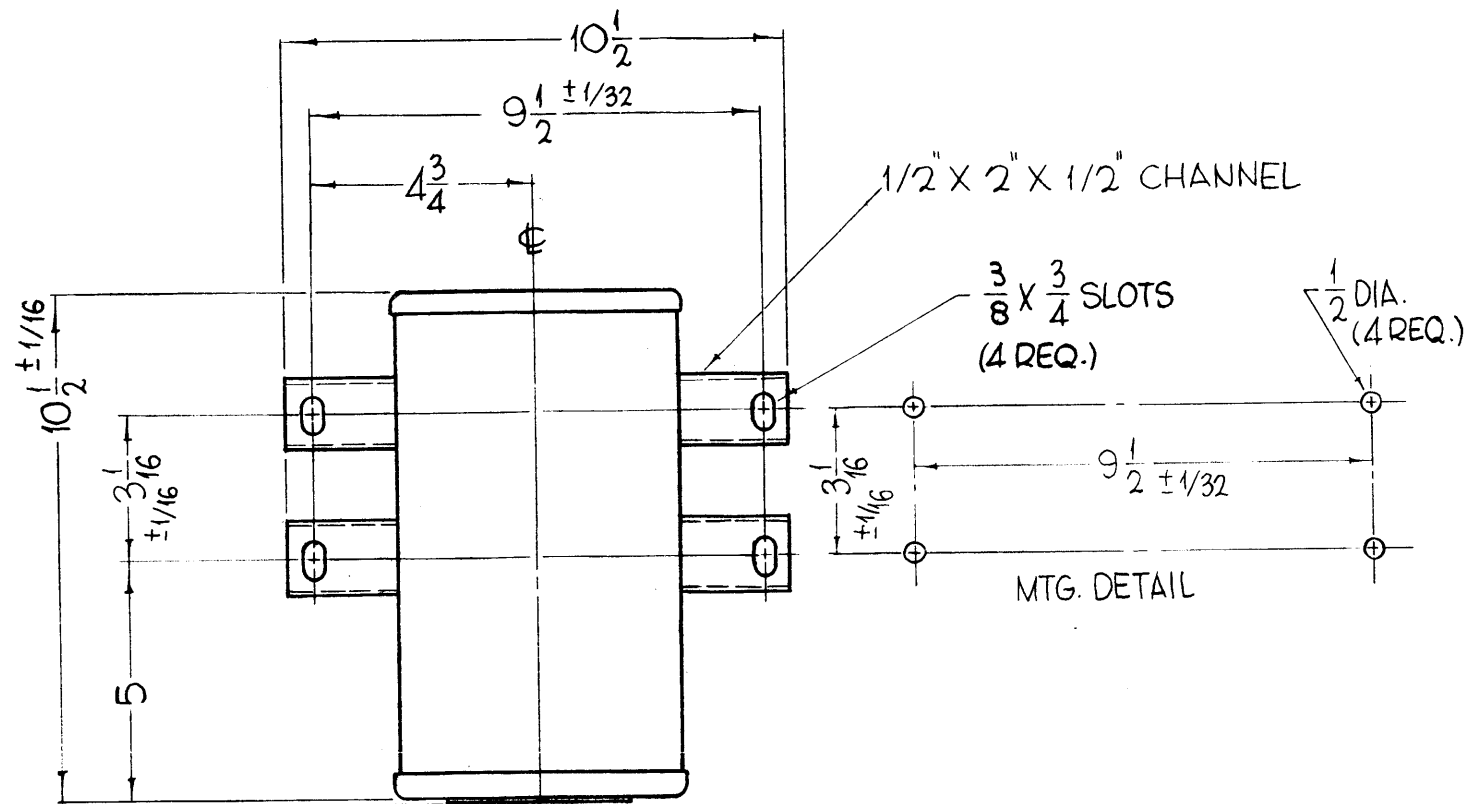
MANUFACTURED IN ACCORDANCE WITH MIL-T-27A EXCEPT THAT MIL-T-27A SHALL NOT APPEAR ON CASE AND NO QUALIFICATION TESTING IS REQUIRED.

REQ'D.	ITEM	PART NUMBER	DESCRIPTION	SYMBOL
--------	------	-------------	-------------	--------

LIST OF MATERIAL

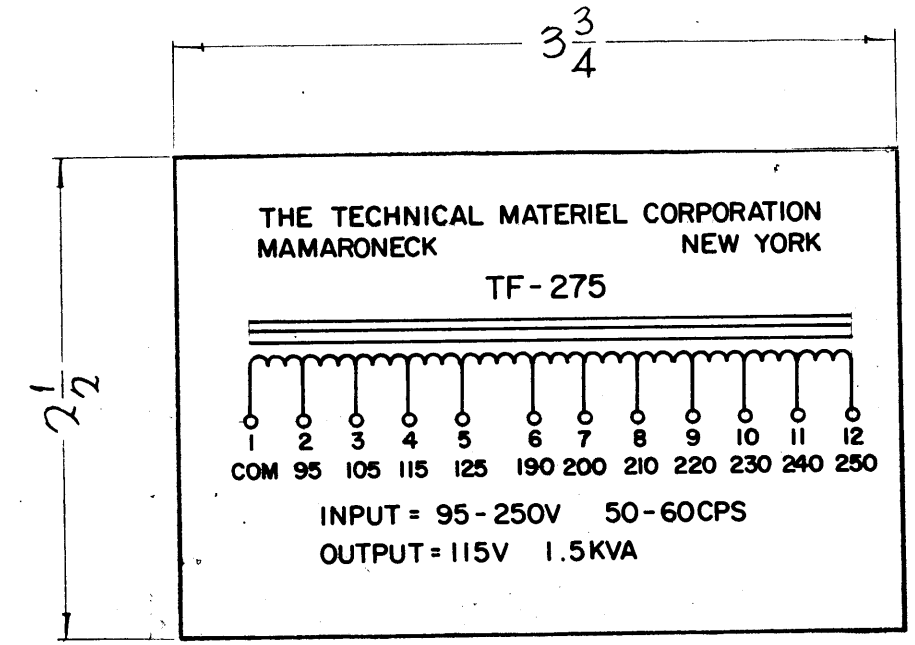
MATERIAL	SEE NOTE	THE TECHNICAL MATERIEL CORP. MAMARONECK, NEW YORK			
FINISH	SEE NOTE	TITLE TRANSFORMER, POWER BIAS SUPPLY			
UNLESS OTHERWISE SPECIFIED DIMENSIONS ARE IN INCHES AND INCLUDE CHEMICALLY APPLIED OR PLATED FINISHES	DRAWN	G.D.L.	DATE	10-5-63	FINAL APPROVAL
	CHECKED		DATE		
DECIMALS .X ± .05 .XX ± .01 .XXX ± .005	TOLERANCES	FRACTIONS ± 1/64 ANGLES ± 0° 30'	ELECT. DES.	RT	DATE
			MECH. DES.		DATE
SHEET					REV. LTR.

1	GPT-40KLF	ASS'Y. NO.
Q'TY./UNIT	MODEL USED ON	ASS'Y. NO.
SCALE	CODE	S401-30
THE CONTENTS OF THIS DRAWING ARE THE EXCLUSIVE PROPERTY OF THE TECHNICAL MATERIEL CORP. ITS UNAUTHORIZED USE OR REPRODUCTION IN WHOLE OR IN PART IS STRICTLY FORBIDDEN.		



TF-275 B

REVISIONS				
SYM	DESCRIPTION	DATE	E.M.N. NO.	DRAFT
O	ORIGINAL RELEASE FOR PRODUCTION	5-4-64		SRG
A	(4) SLOTS WERE 1/2 x 3/4	8-6-64	10254	SRG
B	7/8 DIA (2 REQ) WAS 1 3/8 DIA (2 REQ)	12-24-64	13170	SRG



NAMEPLATE DETAIL

REQ'D.	ITEM	PART NUMBER	DESCRIPTION	SYMBOL
--------	------	-------------	-------------	--------

LIST OF MATERIAL

CASE DATA:
 MAT'L - STEEL
 FINISH - S115 - SMOOTH GRAY ENAMEL.
TERMINAL DATA:
 QUAN - 12, TYPE - MTG. SCREW

OVERALL WINDING DATA:
 INPUT - 95-250V, OUTPUT - 115V
 FREQ - 50-60 CPS, KVA RATING - 1.5
TAP DATA:
 QUAN: 12
 VOLTAGE - INPUT - 95-250V,
 OUTPUT - 115V

NOTES

1 EACH	DDR-7B, C	
	GPTIDK(R)7 (AX507)	
QTY./UNIT	MODEL USED ON	ASS'Y. NO.
SCALE #	CODE A	

THE CONTENTS OF THIS DRAWING ARE THE EXCLUSIVE PROPERTY OF THE TECHNICAL MATERIEL CORP. ITS UNAUTHORIZED USE OR REPRODUCTION IN WHOLE OR IN PART IS STRICTLY FORBIDDEN.

MATERIAL
SEE NOTES

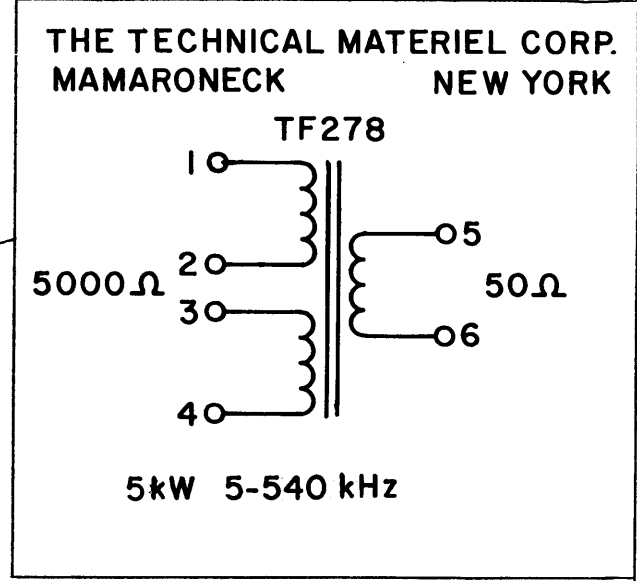
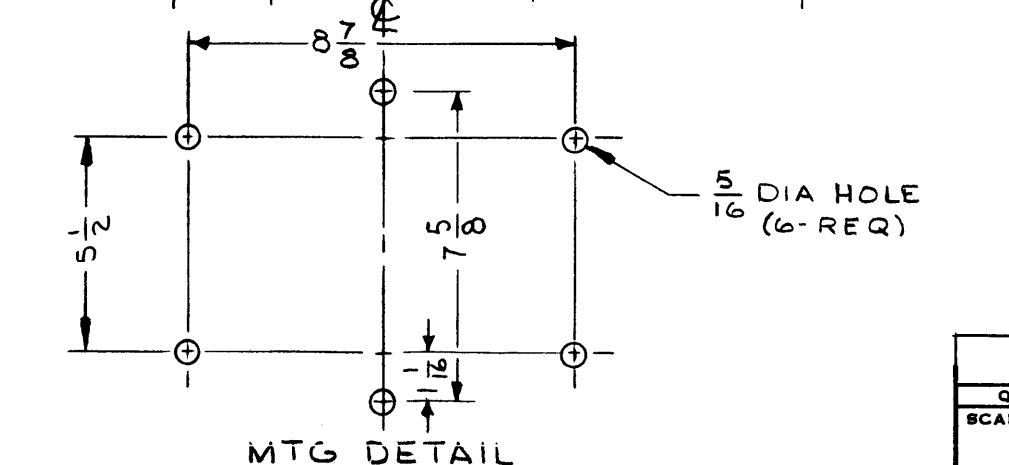
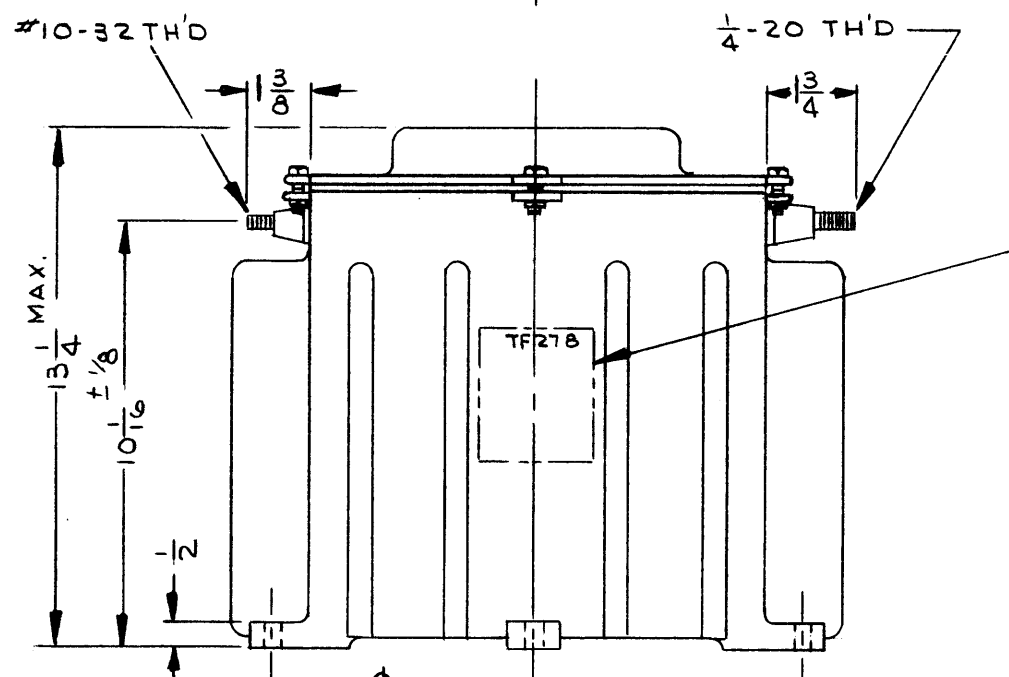
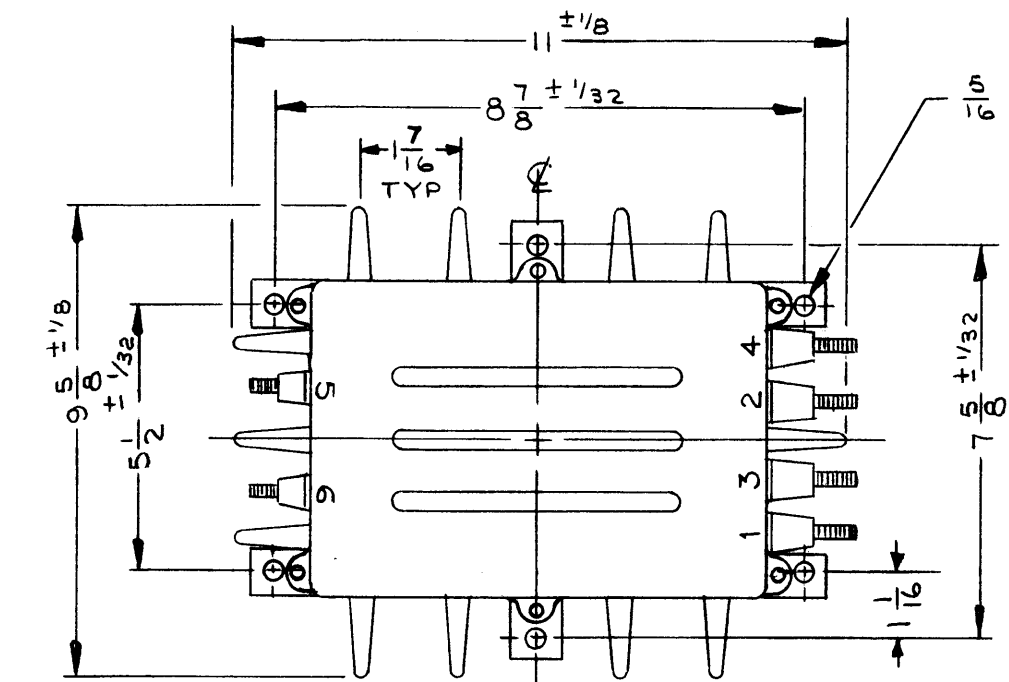
FINISH
SEE NOTES

UNLESS OTHERWISE SPECIFIED
 DIMENSIONS ARE IN INCHES AND INCLUDE
 CHEMICALLY APPLIED OR PLATED FINISHES

DECIMALS: .X ± .05, .XX ± .01, .XXX ± .05
 FRACTIONS: ± 1/64 ANGLES ± 0° 30'

TOLERANCES

THE TECHNICAL MATERIEL CORP. MAMARONECK, NEW YORK			
TITLE TRANSFORMER, POWER, FIXED AUTOTRANSFORMER			
DRAWN	DATE	FINAL APPROVAL	
John C. Biele	2-13-64	[Signature]	
CHECKED	DATE	DATE	
[Signature]	5/23/69	[Signature]	
ELECT. DES.	DATE	SHEET	
[Signature]		TF-275	
MECH. DES.	DATE	REV. LTR.	
		B	



SCHEMATIC STAMP

TF278

REVISIONS

SYM	DESCRIPTION	DATE	E.M.N. NO.	DRAFT	CHKD	APPD
X	EXP. RELEASE	10/15/66		JL		
X1	CHG'D 1-3/16 TO 1-7/16. RELOC 2 MTG HOLES FR 5-1/2 TO 7-5/8. ADDED 1/16 DIM	1-9-67		RME		
Ø	ORIGINAL RELEASE FOR PRODUCTION	1/10/67		CV		

SPECIFICATIONS

IMPEDANCE DATA:

INPUT IMPEDANCE: 5000 Ω BALANCED
 OUTPUT IMPEDANCE: 50 Ω UNBALANCED

OPERATING FREQUENCY: 5 TO 540 kHz

AVERAGE POWER RATING: 5 kW AVR 25 kW PEAK

INSULATION TEST:
 PRIMARY TO GRD TERM 2&3 TIED TOGETHER 15 K VRMS
 SECONDARY TO GRD EITHER TERMINAL 2 K VRMS

CASE DATA:
 HERMETICALLY SEALED: NO
 CASE TYPE: OPEN FRAME

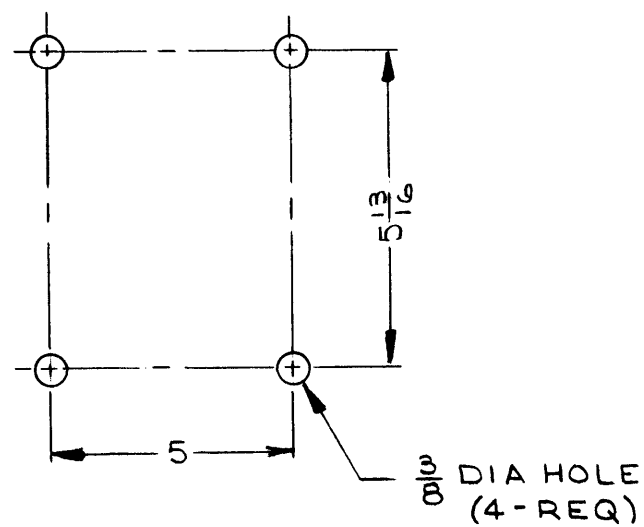
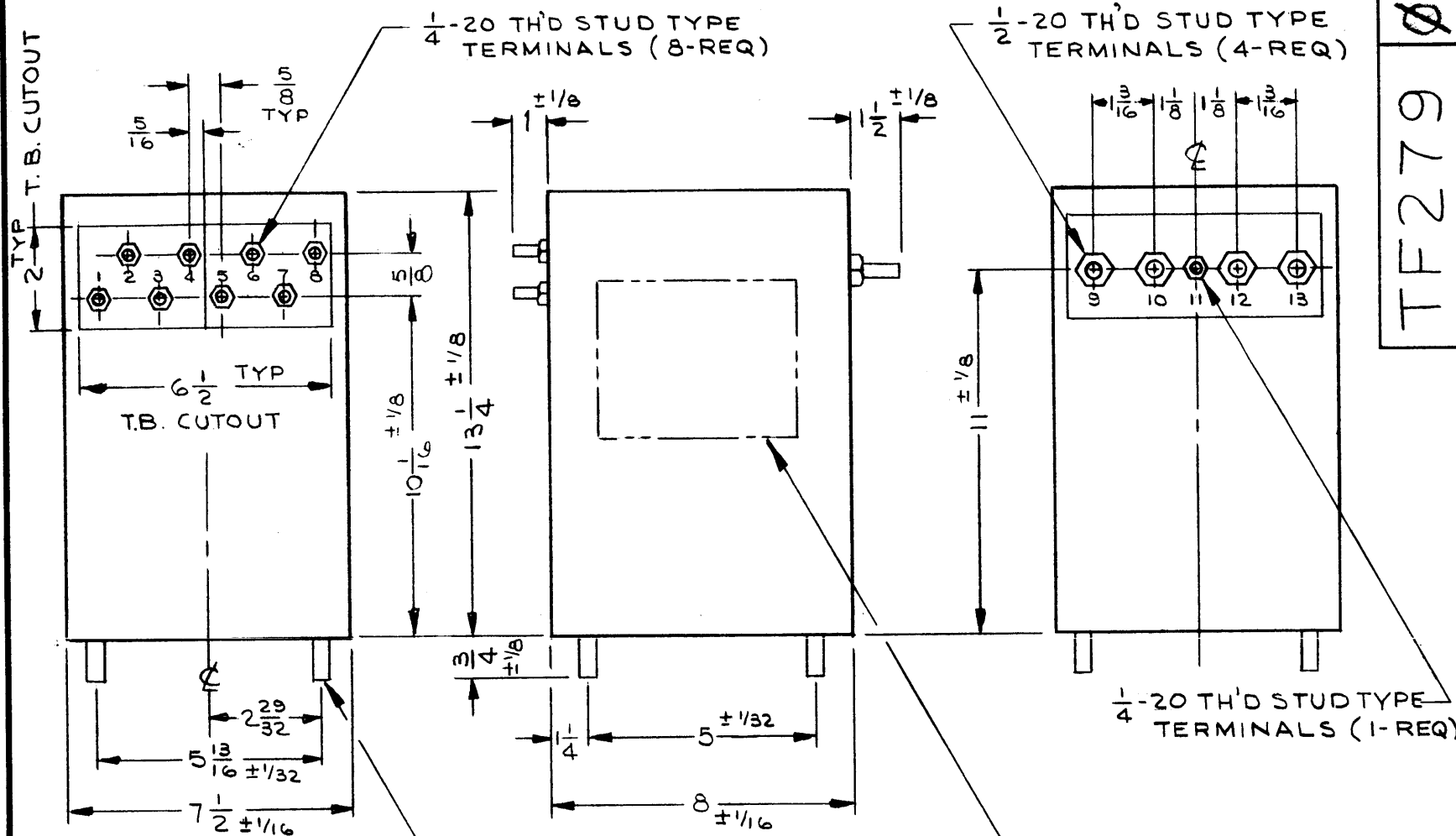
NOTE: TO BE MANUFACTURED IN ACCORDANCE WITH MIL-T-27, EXCEPT THAT MIL-T-27 SHALL NOT APPEAR ON CASE AND QUALIFICATION TESTING NOT REQUIRED.

REQ'D.	ITEM	PART NUMBER	DESCRIPTION	SYMBOL
BUDETTI LIST OF MATERIAL				
MATERIAL			THE TECHNICAL MATERIEL CORP. MAMARONECK, NEW YORK	
FINISH			TITLE TRANSFORMER, RF, OUTPUT PUSH-PULL FIXED	
UNLESS OTHERWISE SPECIFIED DIMENSIONS ARE IN INCHES AND INCLUDE CHEMICALLY APPLIED OR PLATED FINISHES			DRAWN J. LESHINSKI CHECKED ELECT. DES. MECH. DES.	DATE 10/15/66 DATE DATE DATE
DECIMALS .X ± .05 .XX ± .01 .XXX ± .005			TOLERANCES ± 1/64 ANGLES ± 0° 30'	
THE CONTENTS OF THIS DRAWING ARE THE EXCLUSIVE PROPERTY OF THE TECHNICAL MATERIEL CORP. ITS UNAUTHORIZED USE OR REPRODUCTION IN WHOLE OR IN PART IS STRICTLY FORBIDDEN.			FINAL APPROVAL DATE 1/10/67 TF278 SHEET REV. LTR.	

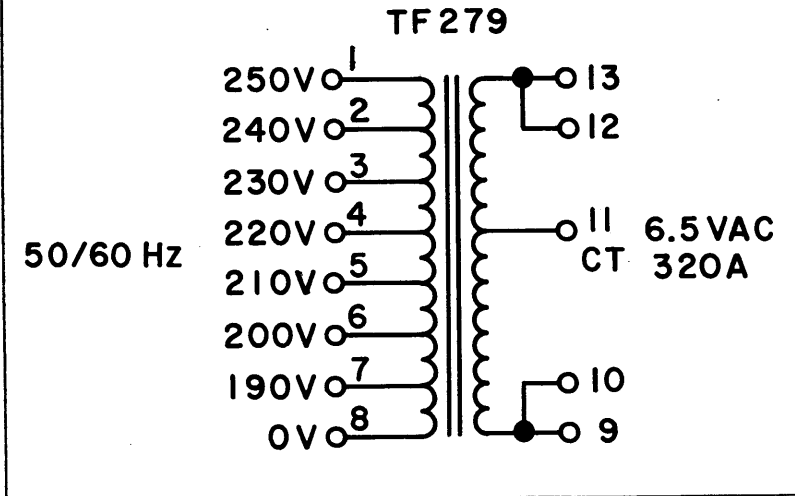
1	GPT-10KLF	
Q'TY./UNIT	MODEL USED ON	ASS'Y. NO.
SCALE	CODE	S401-30(5200)

NOTES

STANDARD DRAWING



THE TECHNICAL MATERIEL CORPORATION
MAMARONECK NEW YORK



1	GPT-10KLF	
Q'TY./UNIT	MODEL USED ON	ASS'Y. NO.
SCALE — H —	CODE	S401-30 (5595)

THE CONTENTS OF THIS DRAWING ARE THE EXCLUSIVE PROPERTY OF THE TECHNICAL MATERIEL CORP. ITS UNAUTHORIZED USE OR REPRODUCTION IN WHOLE OR IN PART IS STRICTLY FORBIDDEN.

NOTES

TF279

REVISIONS

SYM	DESCRIPTION	DATE	E.M.N. NO.	DRAFT	CHKD	APPD
X ₁	ADDED T.B. CUTOUT REF.; NO LOAD VOLTAGE	1/9/66		JL		
X ₂	CHG'D 15/16 TO 1 ± 1/8 & 1 1/16 TO 1 1/2 ± 1/8	1-9-67		RME		
Ø	ORIGINAL RELEASE FOR PRODUCTION	1/10/67	Ø	CV		

— SPECIFICATIONS —

1. PRIMARY WINDING:
 - A. VOLTAGE: 190, 200, 210, 220, 230, 240, 250 V
 - B. FREQUENCY: 50/60 Hz
 - C. PHASE: 1
2. SECONDARY WINDING:
 - A. FULL LOAD:
 1. VOLTAGE: 6.5 VAC CT
 2. CURRENT: 320 AMPS
 - B. NO LOAD VOLTAGE 6.7 V
3. BREAKDOWN VOLTAGE: 1500 VAC
4. CASE DATA:
 1. HERMETICALLY SEALED: NO
 2. CASE TYPE: STEEL CASE
5. TERMINAL DATA:
 1. NO. OF TERMINALS: 13
 2. TYPE: 9-(1/4-20THD STUD), 4-(1/2-20THD STUD)
6. FINISH: SMOOTH GRAY ENAMEL (TMC SPEC S115)
7. MARKING:
 1. ALL TERMINALS TO BE METAL STAMPED 1/8 HIGH GOTHIC
 2. SCHEMATIC STAMP MARKING TO BE PER TMC SPEC S727

NOTE: TO BE MANUFACTURED IN ACCORDANCE WITH MIL-T-27 EXCEPT THAT MIL-T-27 SHALL NOT APPEAR ON CASE & QUALIFICATION TESTING IN NOT REQUIRED.

REQ'D.	ITEM	PART NUMBER	DESCRIPTION	SYMBOL
		BUDETTI	LIST OF MATERIAL	

MATERIAL	THE TECHNICAL MATERIEL CORP. MAMARONECK, NEW YORK
FINISH	TITLE TRANSFORMER, POWER - STEP DOWN

UNLESS OTHERWISE SPECIFIED, DIMENSIONS ARE IN INCHES AND INCLUDE CHEMICALLY APPLIED OR PLATED FINISHES	DRAWN J. LESHINSKI	DATE 3/21/66	FINAL APPROVAL 	DATE 1/10/67
DECIMALS .X ± .05 .XX ± .01 .XXX ± .005	TOLERANCES	FRACTIONS ± 1/64 ANGLES ± 0° 30'	ELECT. DES. 	DATE 1/17/66
			MECH. DES. 	DATE
			TF 279	Ø
			SHEET	REV. LTR.

STANDARD DRAWING

TF280

REVISIONS

SYM	DESCRIPTION	DATE	E.M.N. NO.	DRAFT	CHKD	APPD
Q	ORIGINAL RELEASE FOR PRODUCTION	1/9/67		WTO		

SPECIFICATIONS

ELECTRICAL:

INDUCTANCE: 14 HY
 DC CURRENT RATING: 2.5 A
 DC RESISTANCE:
 INSULATION TEST VOLTAGE: 15 KV

MECHANICAL:

CASE: COLD ROLLED STEEL
 FINISH: SMOOTH GREY ENAMEL (TMC SPEC S115) EXCEPT MTG STUD END

TERMINAL DATA:

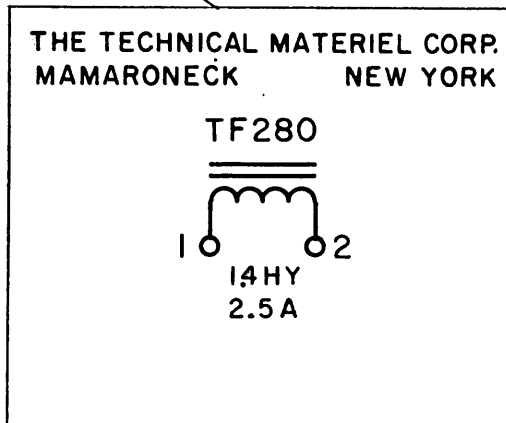
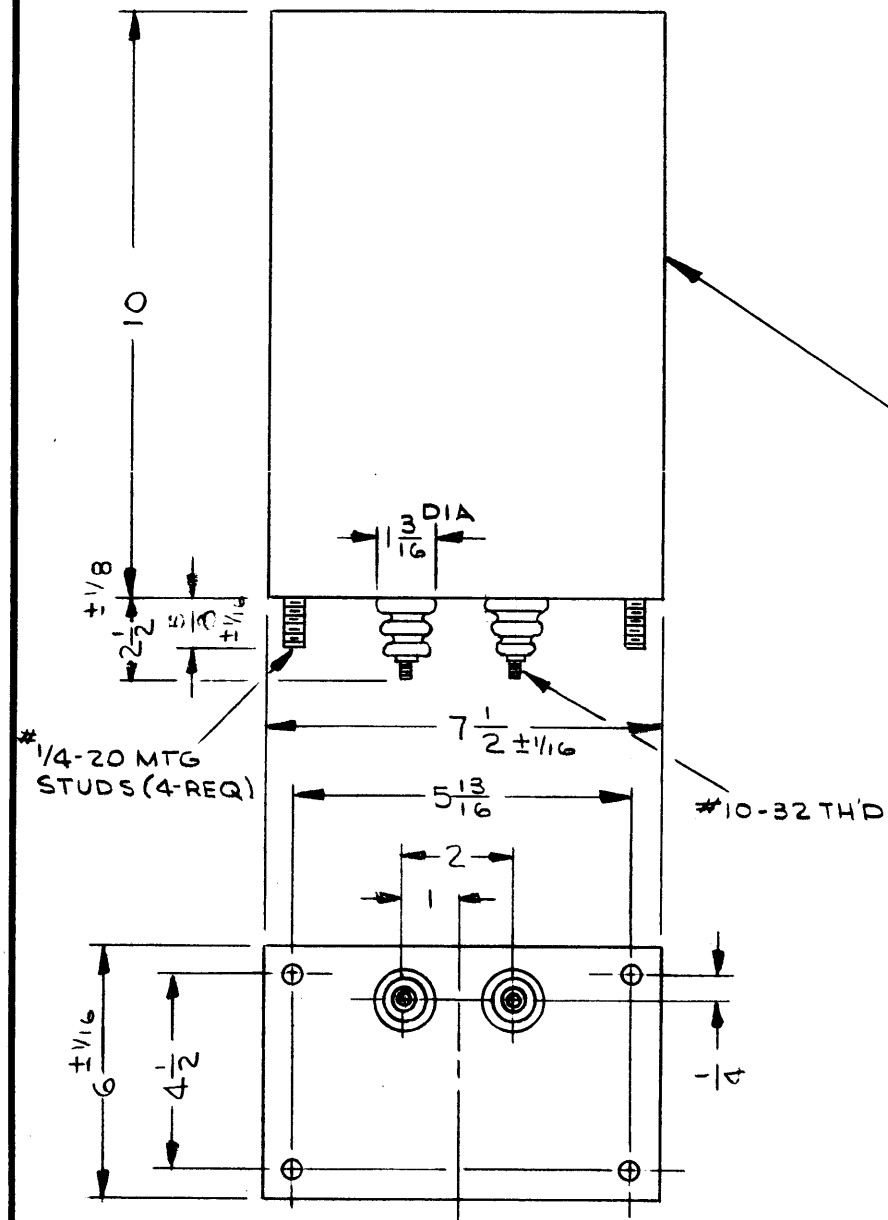
TYPE: PILLAR, THREADED STUD #10-32

STAMPING:

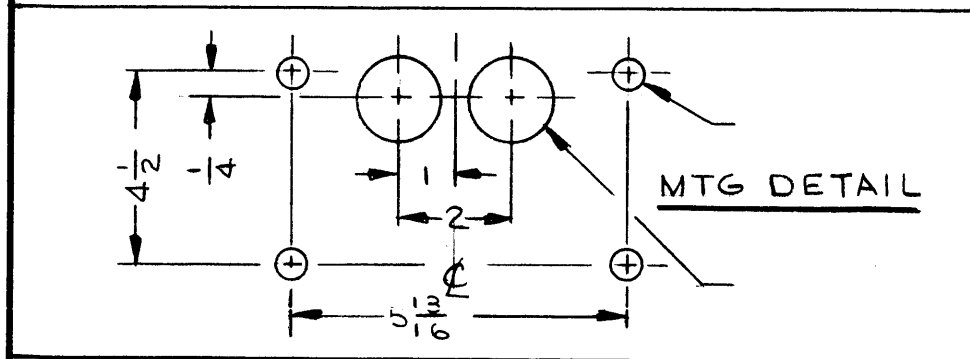
TERMINALS SHALL BE METAL STAMPED 1-2 AS SHOWN. SCHEMATIC
 DIAGRAM TO BE PLACED WHERE SHOWN. ALL LETTERING & LINEWORK TO
 BE IN ACCORDANCE WITH TMC SPEC S727.

NOTE:

MANUFACTURED IN ACCORDANCE WITH MIL SPEC T-27-A EXCEPT THAT
 MIL SPEC T-27-A SHALL NOT APPEAR ON CASE AND QUALIFICATION
 TESTING NOT REQUIRED



SCHEMATIC STAMP



NOTES

1	GPT-10KLF	
Q'TY./UNIT	MODEL USED ON	ASS'Y. NO.
SCALE	CODE	5401-30 (5596)

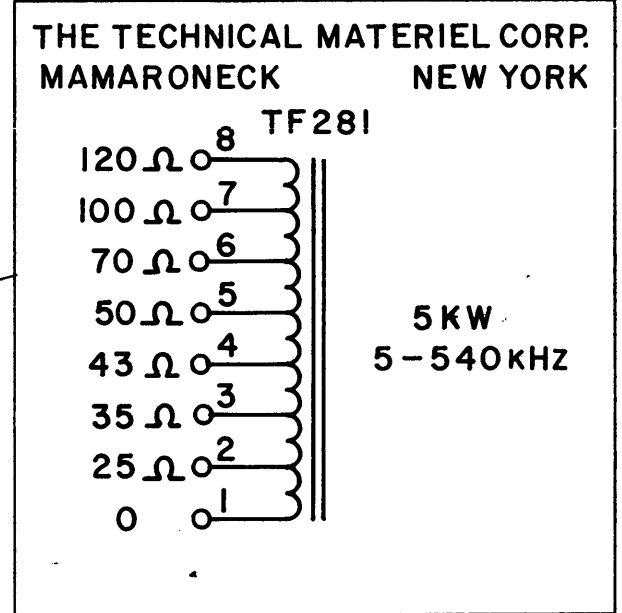
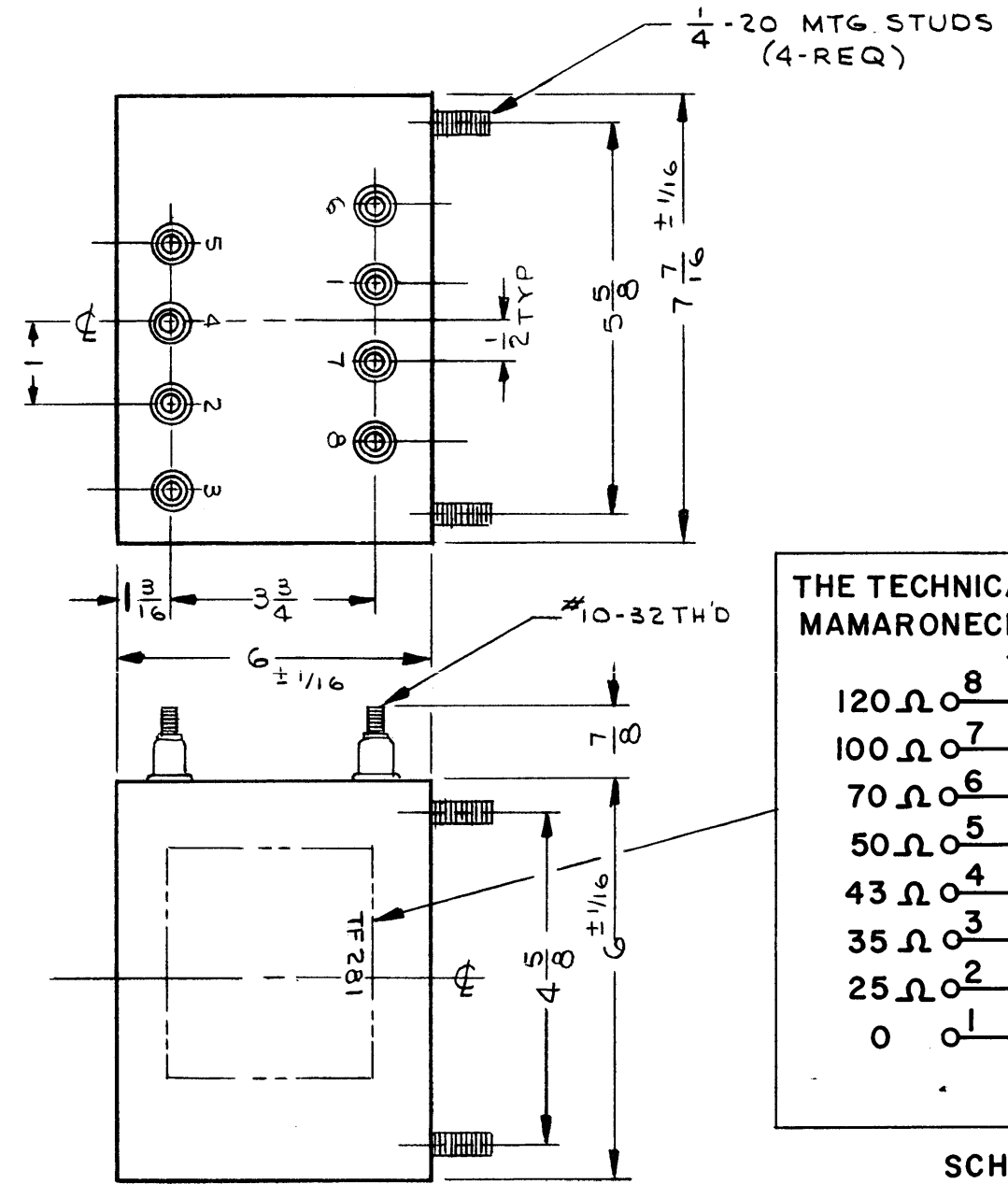
THE CONTENTS OF THIS DRAWING ARE THE EXCLUSIVE PROPERTY OF THE TECHNICAL MATERIEL CORP. ITS UNAUTHORIZED USE OR REPRODUCTION IN WHOLE OR IN PART IS STRICTLY FORBIDDEN.

REQ'D.	ITEM	PART NUMBER	DESCRIPTION	SYMBOL
BUDETTI LIST OF MATERIAL				
MATERIAL			THE TECHNICAL MATERIEL CORP. MAMARONECK, NEW YORK	
FINISH			TITLE CHOKE, FILTER	
UNLESS OTHERWISE SPECIFIED DIMENSIONS ARE IN INCHES AND INCLUDE CHEMICALLY APPLIED OR PLATED FINISHES			DRAWN J. LESHINSKI CHECKED <i>[Signature]</i> ELECT. DES. <i>[Signature]</i> MECH. DES. <i>[Signature]</i>	DATE 10/14/66 DATE 11/29/66 DATE DATE
DECIMALS .X ± .05 .XX ± .01 .XXX ± .005			TOLERANCES ± 1/64 ANGLES ± 0° 30'	FINAL APPROVAL <i>[Signature]</i> DATE 1/11/67 TF280 SHEET REV. LTR.

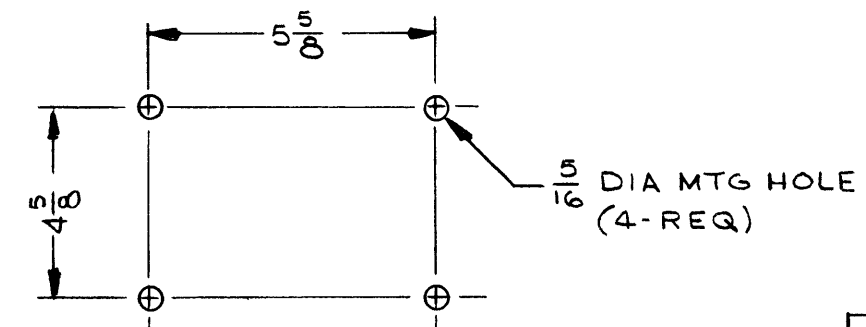
STANDARD DRAWING

TF281

REVISIONS						
SYM	DESCRIPTION	DATE	E.M.N. NO.	DRAFT	CHKD	APPD
X	EXP. RELEASE	10/14/66		JL	JL	
Ø	ORIGINAL RELEASE FOR PRODUCTION	1-9-67		WFW		



SCHEMATIC STAMP



MTG DETAIL

NOTES

1	GPT-10KLF	
Q'TY./UNIT	MODEL USED ON	ASS'Y. NO.
SCALE	CODE	S401-30 (5201)
THE CONTENTS OF THIS DRAWING ARE THE EXCLUSIVE PROPERTY OF THE TECHNICAL MATERIEL CORP. ITS UNAUTHORIZED USE OR REPRODUCTION IN WHOLE OR IN PART IS STRICTLY FORBIDDEN.		

SPECIFICATIONS

ELECTRICAL

INSULATION TEST VOLTAGE: 2 KV RMS
 POWER CAPABILITY: 5 KW AVERAGE
 25 KW PEAK
 FREQUENCY: 5-540 KHZ

TAP DATA

QUANTITY: 8
 IMPEDANCE: 0, 25, 35, 43, 50, 70, 100, 120 Ω

MECHANICAL

CASE: COLD ROLLED STEEL
 FINISH: S115 SMOOTH GREY ENAMEL (EXCEPT TERMINALS)
 TERMINALS: CERAMIC, STANDOFF THREADED STUD (#10-32 THD)
 TOLERANCE: ±1/32 UNLESS OTHERWISE SPECIFIED

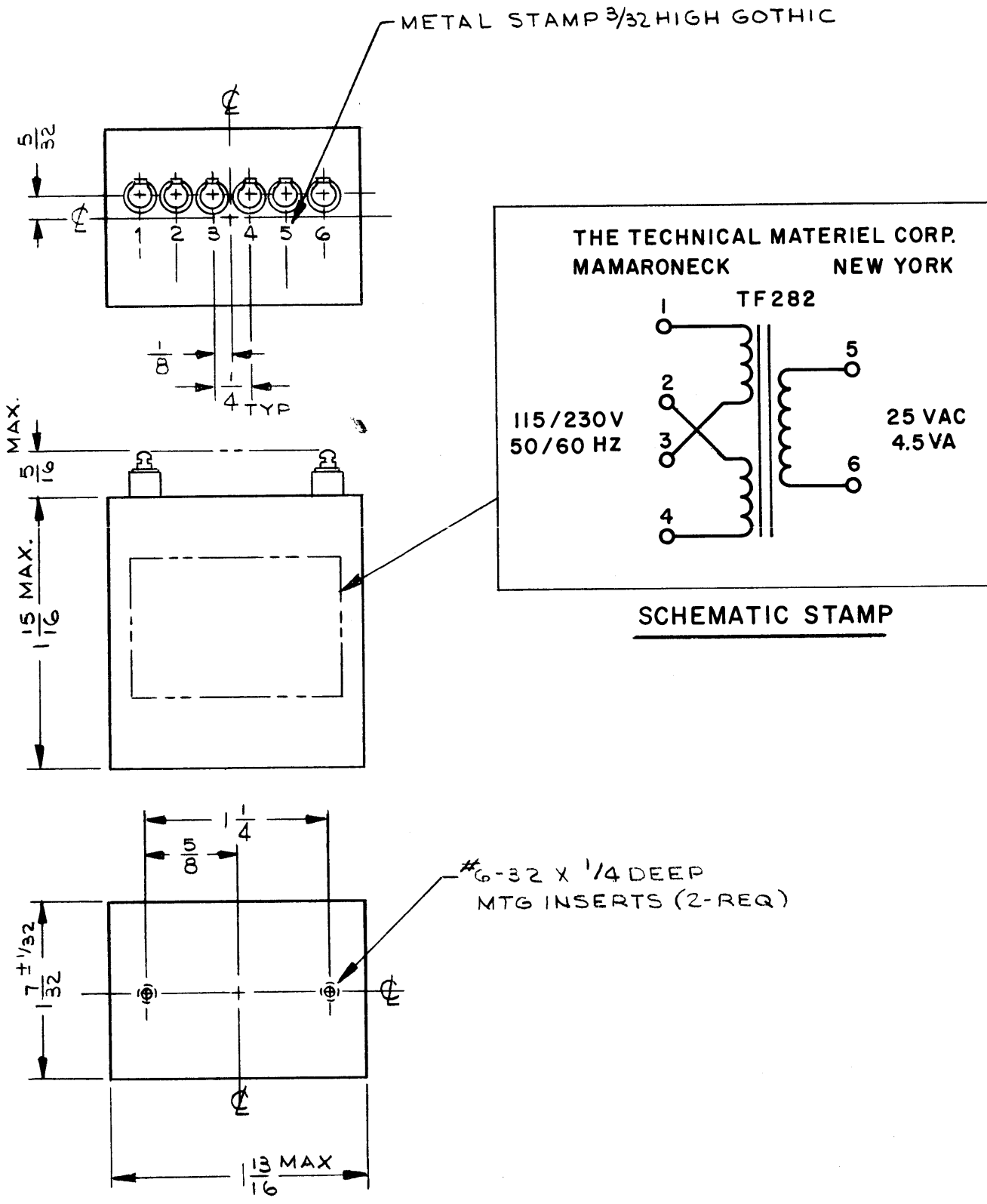
STAMPING

ACCORDING TO TMC SPEC S727, BLACK GOTHIC LETTERING & LINE WORK. SCHEMATIC TO BE PLACED AS SHOWN

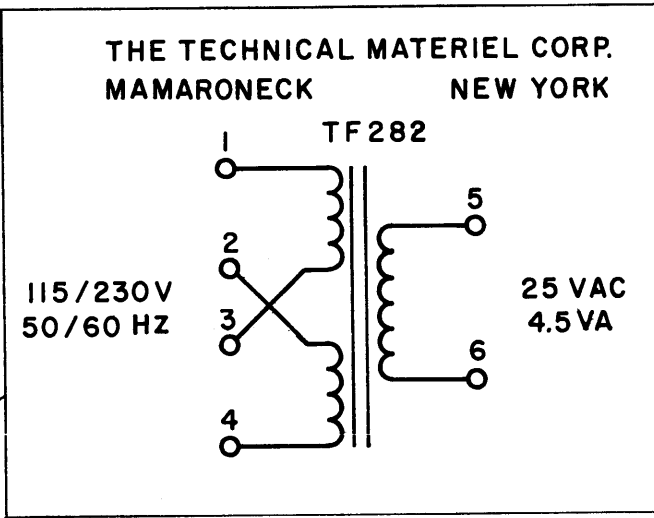
NOTE:

MANUFACTURED IN ACCORDANCE WITH MIL SPEC T-27-A EXCEPT THAT MIL SPEC T-27-A SHALL NOT APPEAR ON CASE AND QUALIFICATION TESTING NOT REQUIRED

REQ'D.	ITEM	PART NUMBER	DESCRIPTION	SYMBOL
BUDETTI LIST OF MATERIAL				
MATERIAL			THE TECHNICAL MATERIEL CORP. MAMARONECK, NEW YORK	
FINISH			TITLE FIXED AUTOTRANSFORMER, R.F.	
UNLESS OTHERWISE SPECIFIED DIMENSIONS ARE IN INCHES AND INCLUDE CHEMICALLY APPLIED OR PLATED FINISHES			DRAWN J. LESHINSKI CHECKED ELECT. DES. MECH. DES.	DATE 10/14/66 DATE 11/11/66 DATE
DECIMALS .X ± .05 .XX ± .01 .XXX ± .005			TOLERANCES FRACTIONS ± 1/64 ANGLES ± 0° 30'	
FINAL APPROVAL DATE 11/9/67			TF281 SHEET REV. LTR.	



METAL STAMP $\frac{3}{32}$ HIGH GOTHIC



SCHEMATIC STAMP

#6-32 X 1/4 DEEP
MTG INSERTS (2-REQ)

NOTES

1	GPT-10KLF	
Q'TY./UNIT	MODEL USED ON	ASS'Y. NO.
SCALE	CODE	S401-30 (5648)
THE CONTENTS OF THIS DRAWING ARE THE EXCLUSIVE PROPERTY OF THE TECHNICAL MATERIEL CORP. ITS UNAUTHORIZED USE OR REPRODUCTION IN WHOLE OR IN PART IS STRICTLY FORBIDDEN.		

TF282

REVISIONS

SYM	DESCRIPTION	DATE	E.M.N. NO.	DRAFT	CHKD	APPD
X	EXP. RELEASE	10/13/66		JL	JL	
Ø	ORIGINAL RELEASE FOR PRODUCTION	1-9-67		WTO		

SPECIFICATIONS

- PRIMARY WINDING:
 - VOLTAGE: 115/230 V
 - FREQUENCY: 50/60 Hz
 - PHASE: 1
- SECONDARY WINDING:
 - FULL LOAD:
 - VOLTAGE: 25 VAC
 - CURRENT: 4.5 VA
 - NO LOAD VOLTAGE: 30.5 V RMS
- BREAKDOWN VOLTAGE: 1000 VAC
- CASE DATA:
 - HERMETICALLY SEALED
 - CASE TYPE: STEEL CASE
- TERMINAL DATA:
 - NO. OF TERMINALS: 6
 - TYPE: STANDOFF, SOLDER TERMINAL
- FINISH: SMOOTH GRAY ENAMEL(TMC SPEC S115)
- MARKING:
 - ALL TERMINALS TO BE METAL STAMPED $\frac{3}{32}$ HIGH GOTHIC
 - SCHEMATIC STAMP MARKING TO BE PER TMC SPEC S727

NOTE: TO BE MANUFACTURED IN ACCORDANCE WITH MIL-T-27, EXCEPT THAT MIL-T-27 SHALL NOT APPEAR ON CASE & QUALIFICATION TESTING IS NOT REQUIRED.

REQ'D.	ITEM	PART NUMBER	DESCRIPTION	SYMBOL
--------	------	-------------	-------------	--------

BUDETTI		LIST OF MATERIAL	
MATERIAL		THE TECHNICAL MATERIEL CORP. MAMARONECK, NEW YORK	
FINISH		TITLE TRANSFORMER, POWER	

UNLESS OTHERWISE SPECIFIED DIMENSIONS ARE IN INCHES AND INCLUDE CHEMICALLY APPLIED OR PLATED FINISHES		DRAWN J. LESHINSKI CHECKED ELECT. DES. MECH. DES.	DATE 9-21-66 DATE DATE DATE	FINAL APPROVAL DATE 1/9/67 SHEET REV. LTR.
DECIMALS .X ± .05 .XX ± .01 .XXX ± .005	FRACTIONS ± 1/64 ANGLES ± 0° 30'	TOLERANCES		

REVISIONS

SYM	DESCRIPTION	DATE	E.M.N. NO.	DRAFT	CHKD	APPD
XI	TERMINAL STYLE CHANGED	6-23-65	M	JC		
Ø	ORIGINAL RELEASE	11-29-65	Ø		JDC	

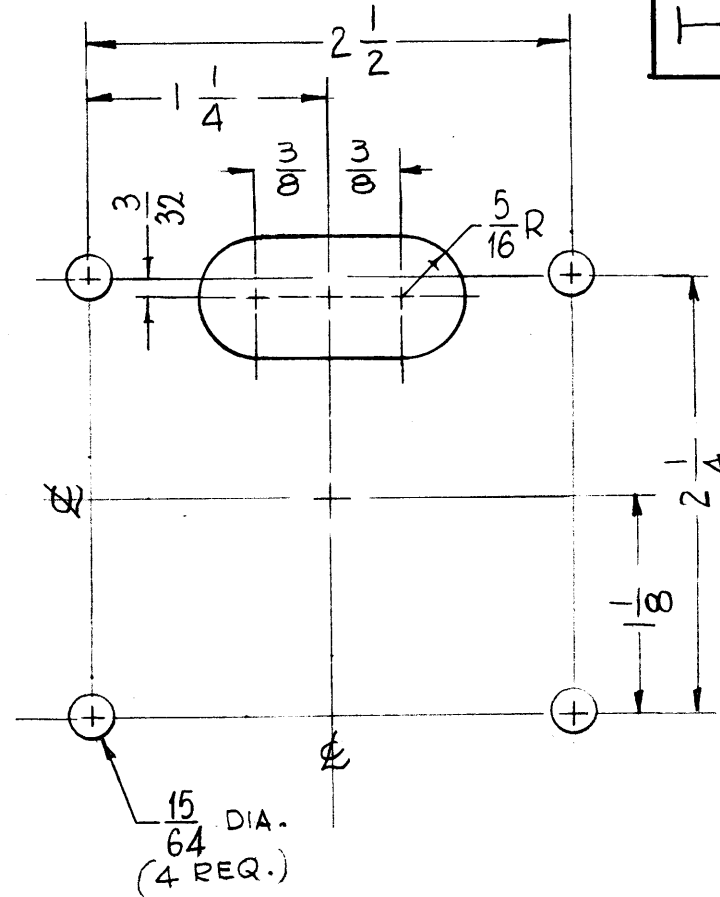
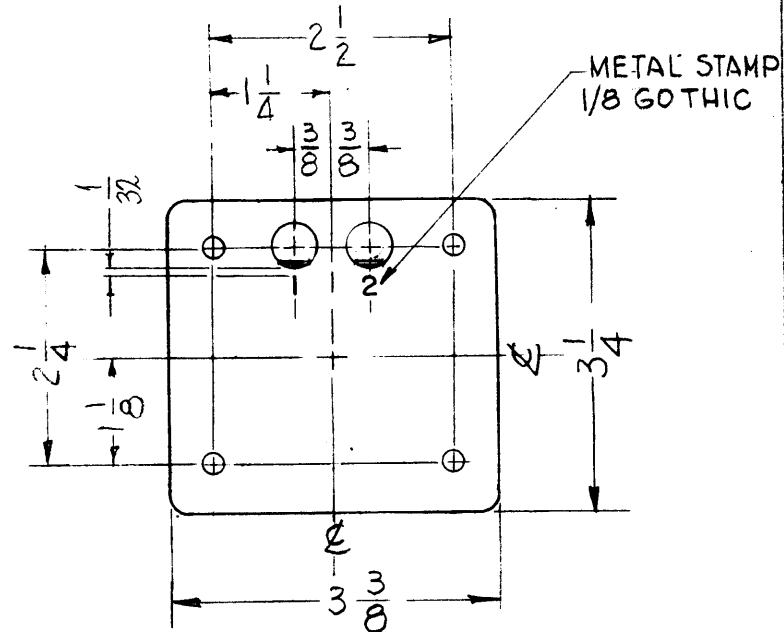
TF283

-ELECTRICAL SPECIFICATIONS-

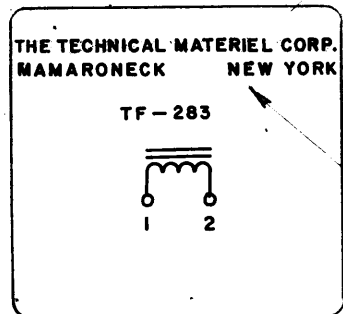
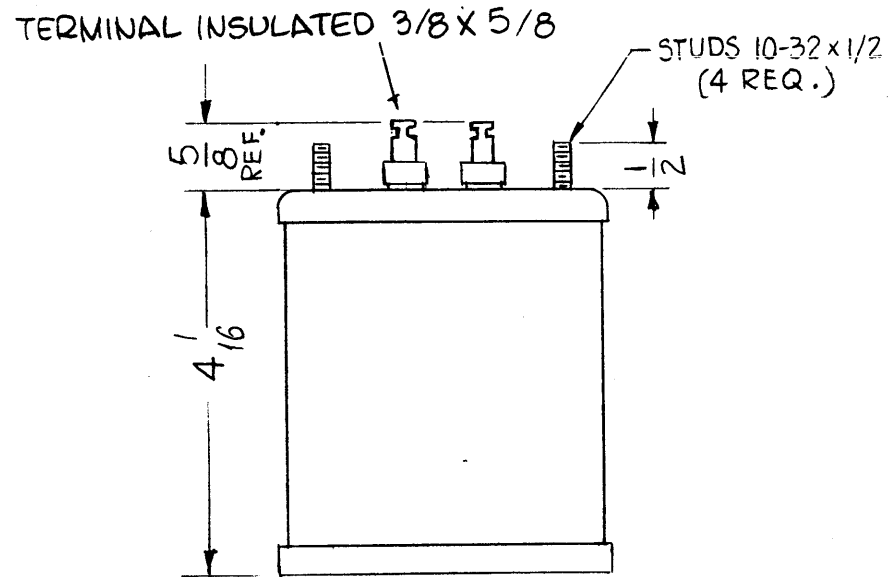
1. REACTOR, FILTER
2. INDUCTANCE TYPE: FIXED
3. COIL DATA:
 - A. SINGLE COIL
 - B. 9 HY INDUCTANCE
 - C. 280 MA
 - D. DC RESISTANCE: 85Ω APPROX.

-MECHANICAL SPECIFICATIONS-

1. CASE DATA
 - A. HERMETICALLY SEALED
 - B. RECTANGULAR METAL CASE, MIL TYPE YY.
 - C. BODY DIMENSIONS:
 - 3 1/4" LONG
 - 3 3/8" WIDE
 - 4 1/16" HIGH
2. MOUNTING DATA:
 - A. MOUNTING METHOD: STUD
 - B. MOUNTING DIM:
 - (4) #10-32 THD. STUDS ON 2-1/4 X 2-1/2 CENTERS 1/2 HIGH.
3. TERMINAL DATA:
 - A. 2 TERMINALS
 - B. SOLDER STUD TYPE 5/8 HIGH INSULATED
4. FINISH:
 - SMOOTH GRAY ENAMEL (TMC SPEC. S-115) EXCEPT TERMINAL END.
5. MARKING:
 - METAL STAMP TERMINALS 1 & 2 AS SHOWN.
 - MARK BOTTOM AS SHOWN PER TMC SPECIFICATION S727.



MOUNTING DATA
(SCALE 1:1)



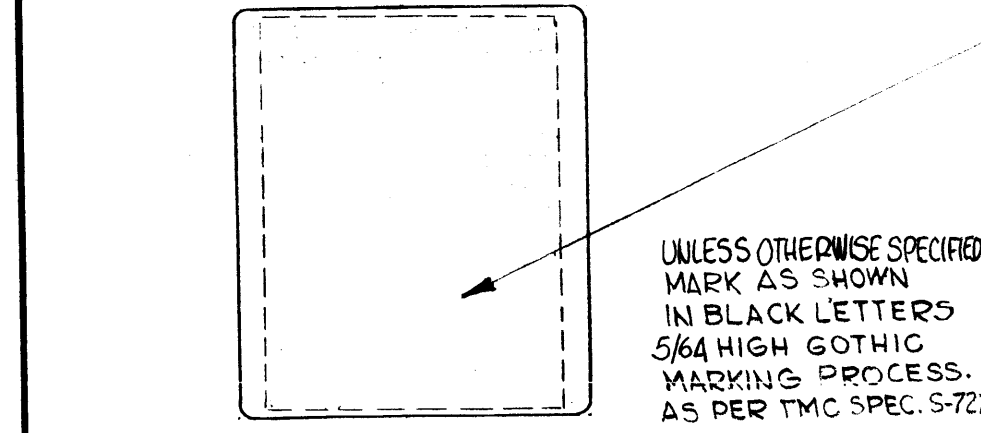
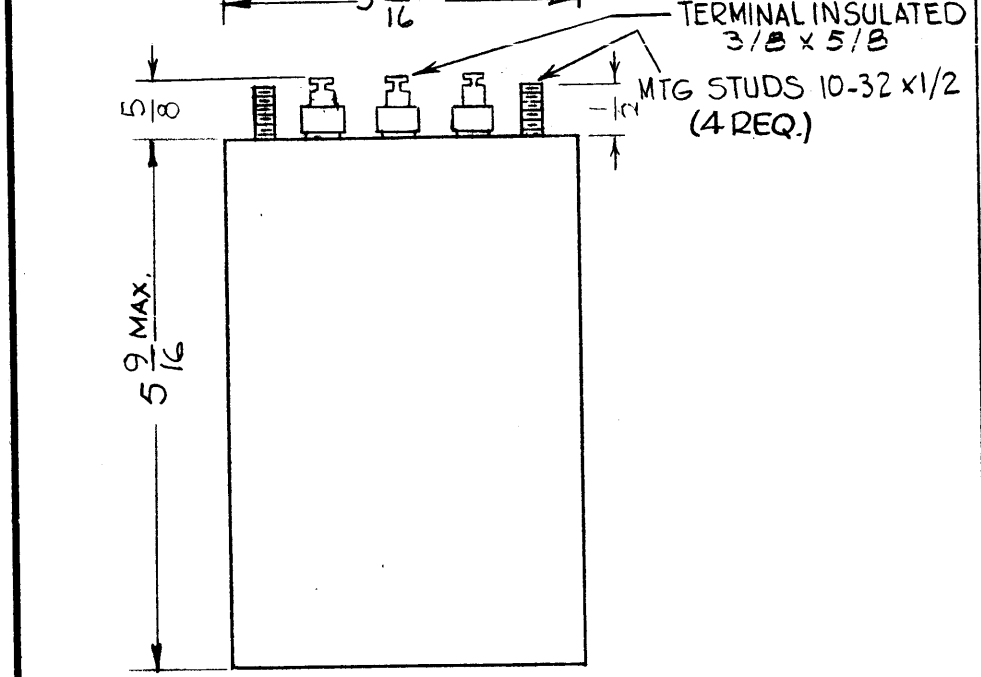
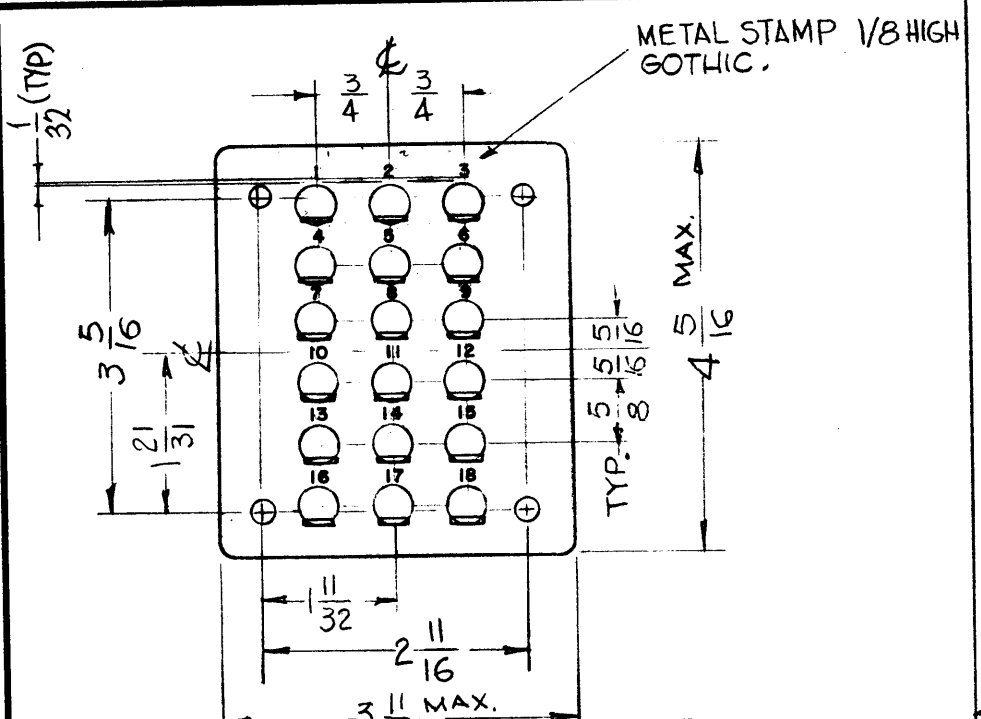
MARK AS SHOWN
IN BLACK LETTERS
1/8 HIGH GOTHIC.
MARKING PROCESS:
AS PER TMC SPEC.
S-727

NOTES

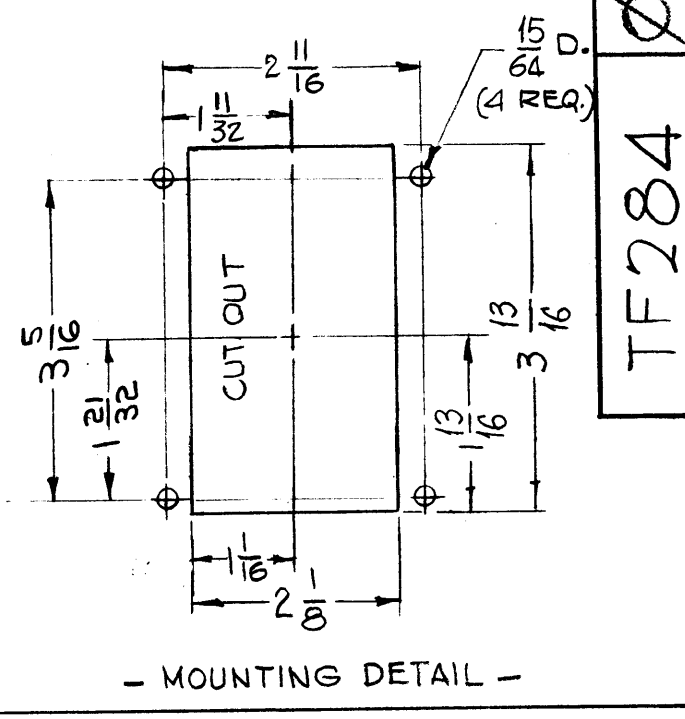
4	VLLA-1	
QTY./UNIT	MODEL USED ON	ASSY. NO.
SCALE	CODE	
1:2	C	S401-30 (5758)

THE CONTENTS OF THIS DRAWING ARE THE EXCLUSIVE PROPERTY OF THE TECHNICAL MATERIEL CORP. ITS UNAUTHORIZED USE OR REPRODUCTION IN WHOLE OR IN PART IS STRICTLY FORBIDDEN.

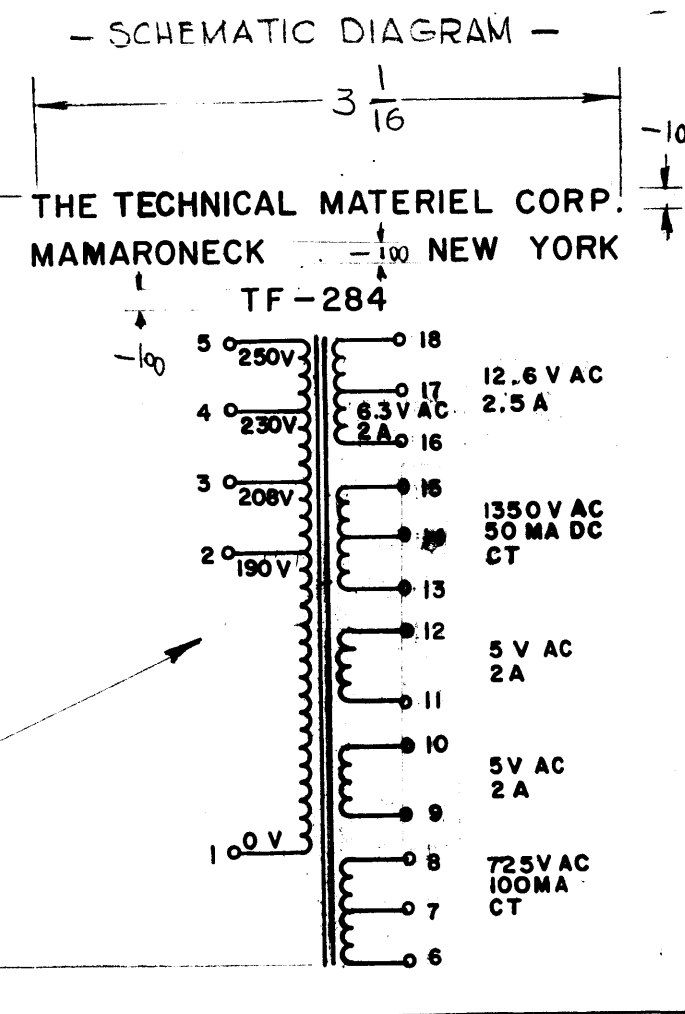
REQ'D.	ITEM	PART NUMBER	DESCRIPTION	SYMBOL
POSE LIST OF MATERIAL				
MATERIAL			THE TECHNICAL MATERIEL CORP. MAMARONECK, NEW YORK	
FINISH			TITLE REACTOR, FILTER - 9HY - 280 MA	
UNLESS OTHERWISE SPECIFIED DIMENSIONS ARE IN INCHES AND INCLUDE CHEMICALLY APPLIED OR PLATED FINISHES			DRAWN G.D.L. DATE 4/7/64 CHECKED JCB DATE 6/24/65 ELECT. DATE MECH. DATE	FINAL APPROVAL DATE 11/29/65 TF283 SHEET REV. LTR.
DECIMALS	TOLERANCES		FRACTIONS	
.X ± .05 .XX ± .01 .XXX ± .005			± 1/64 ANGLES ± 0° 30'	



NOTES



- MOUNTING DETAIL -



- SCHEMATIC DIAGRAM -

THE TECHNICAL MATERIEL CORP.
MAMARONECK NEW YORK

TF-284

1	VLLA-1	ASS'Y. NO.
Q'TY./UNIT	MODEL USED ON	
SCALE	CODE	
1:2		
THE CONTENTS OF THIS DRAWING ARE THE EXCLUSIVE PROPERTY OF THE TECHNICAL MATERIEL CORP. ITS UNAUTHORIZED USE OR REPRODUCTION IN WHOLE OR IN PART IS STRICTLY FORBIDDEN.		

REVISIONS

SYM	DESCRIPTION	DATE	E.M.N. NO.	DRAFT	CHKD	APPD
X1	TERMINAL STYLE CHANGED	6-23-65		Jc		
X2	ELECTRICAL & MECHANICAL SPECS REVISED	12-1-65		Jc		
X3	4-5/16 WAS 4-1/4, 3-11/16 WAS 3-5/8, 5-9/16 WAS 5-1/2 1350VAC WAS 350	2-16-66	X3	Jc		
Ø	ORIGINAL RELEASE FOR PRODUCTION	2-23-66		Jc	Jc	

-ELECTRICAL SPECIFICATIONS-

1. TRANSFORMER, POWER
2. COIL DATA: PRIMARY WINDING - TAPPED FOR 190, 208, 230 and 250 VOLTS AT 50/60 CYCLES.

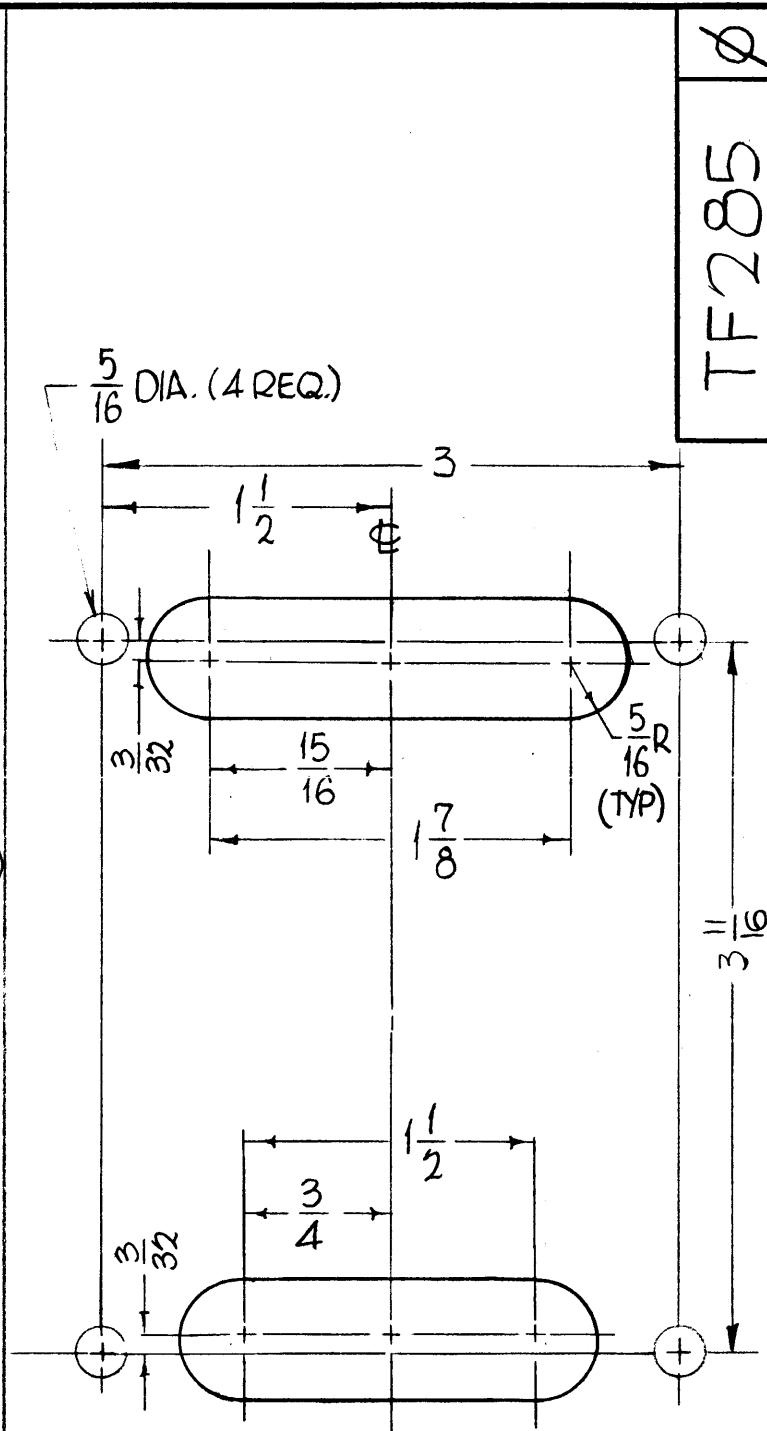
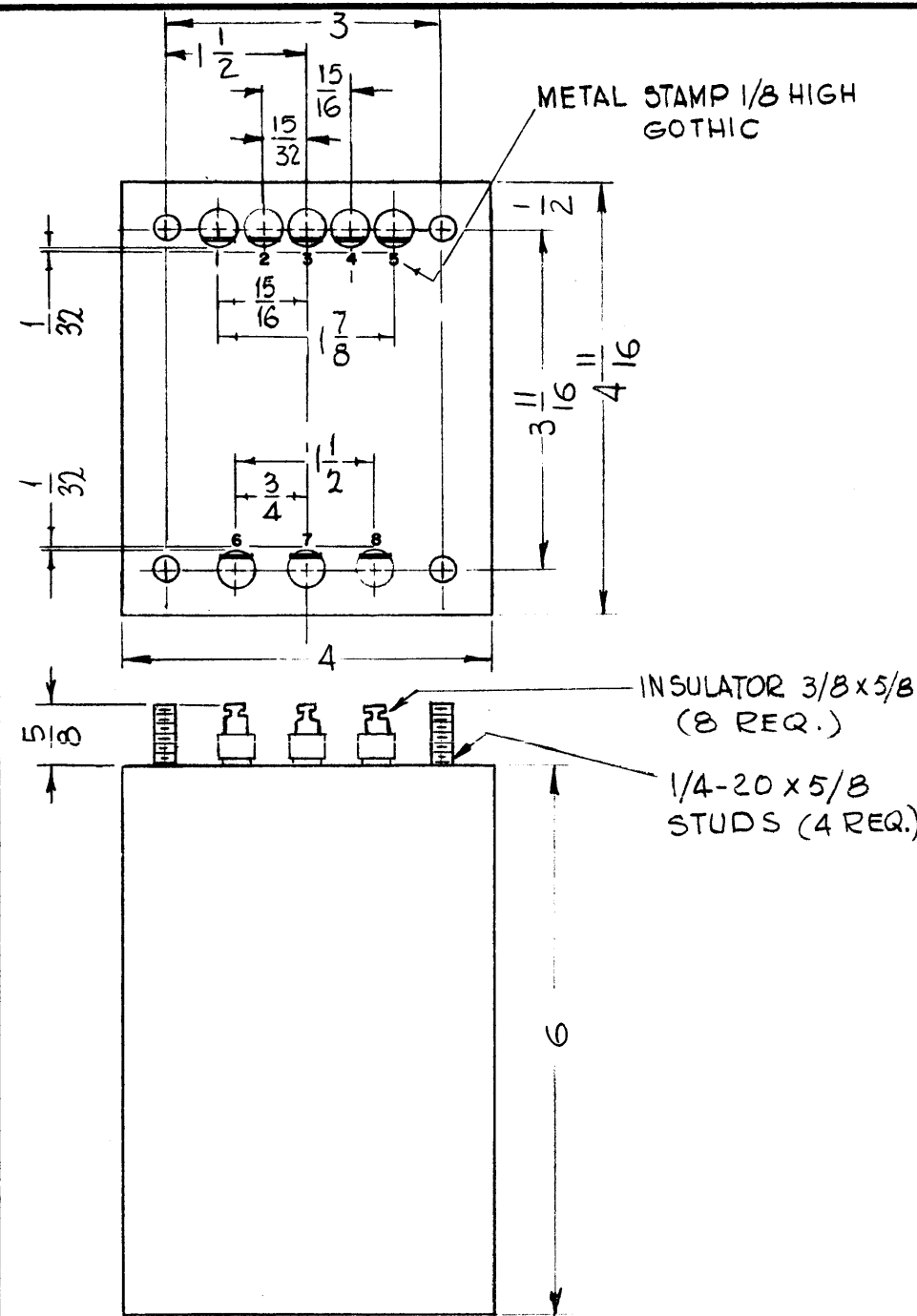
SECONDARY WINDING -

- A - 300 VDC AT 100 MA INTO FULL WAVE RECTIFIER (CHOKE INPUT)
- B - 5 VAC AT 2 AMP
- C - 5 VAC AT 2 AMP
- D - 500 VDC AT 50 MA INTO FULL WAVE RECTIFIER (CHOKE INPUT)
- E - 12.6 VAC AT 2.5 AMP
- F - 6.3 VAC AT 2 AMP

-MECHANICAL SPECIFICATIONS-

1. CASE DATA
 - A. HERMETICALLY SEALED
 - B. RECTANGULAR METAL CASE, MIL TYPE
 - C. BODY DIMENSIONS: 4 5/16 LONG MAX., 3 11/16 WIDE MAX., 5 9/16 HIGH MAX.
2. MOUNTING DATA:
 - A. MOUNTING METHOD: STUD
 - B. MOUNTING DIM. - (4) #10-32 TH'D STUDS ON 2 11/16 X 3 5/16 CENTERS 1/2 HIGH
3. TERMINAL DATA:
 - A. (18) TERMINALS
 - B. SOLDER TYPE 5/8 HIGH INSULATED
4. FINISH: SMOOTH GRAY ENAMEL (TMC SPEC S115) EXCEPT TERMINAL END
5. MARKING: METAL STAMP TERMINALS 1 THRU 18 AS SHOWN. MARK BOTTOM AS SHOWN PER TMC SPECIFICATION S727.

REQ'D.	ITEM	PART NUMBER	DESCRIPTION	SYMBOL
O. POSE LIST OF MATERIAL				
MATERIAL			THE TECHNICAL MATERIEL CORP. MAMARONECK, NEW YORK	
FINISH			TITLE TRANSFORMER POWER	
UNLESS OTHERWISE SPECIFIED DIMENSIONS ARE IN INCHES AND INCLUDE CHEMICALLY APPLIED OR PLATED FINISHES			DRAWN G.D.L.	DATE 2/23/66
			CHECKED Jc	DATE 12/1/65
			ELECT. DES. Jc	DATE
			MECH. DES. Jc	DATE
			TF284	
			SHEET	
			REV. LTR.	



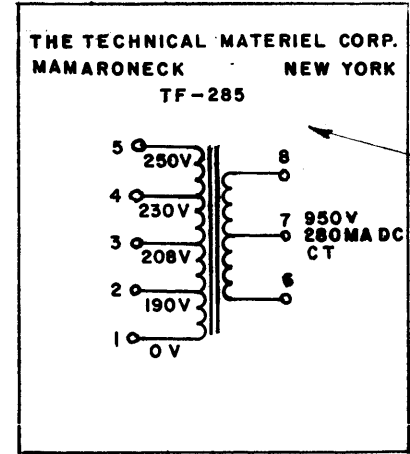
TF285

REVISIONS					
SYM	DESCRIPTION	DATE	E.M.N. NO.	DRAFT	CHKD
X1	TERMINAL STYLE CHANGED	6-23-65		JC	
X2	ELECTRICAL & MECHANICAL SPECS REVISED	11-30-65		Jc	
Ø	ORIGINAL RELEASE FOR PRODUCTION	12-2-65			

- ELECTRICAL SPECIFICATIONS-
1. TRANSFORMER, POWER
 2. COIL DATA: PRIMARY WINDING:
TAPPED FOR 190, 208, 230 AND 250 VOLTS AT 50/60 CPS
 3. SECONDARY WINDING: 950V CT AT 280MA DC (INTO FULL WAVE BRIDGE, CHOKE INPUT)

- MECHANICAL SPECIFICATIONS-
1. CASE DATA:
 - A. HERMETICALLY SEALED
 - B. RECTANGULAR METAL CASE, MIL TYPE
 - C. BODY DIMENSIONS - 4 11/16" LONG
4" WIDE
6" HIGH
 2. MOUNTING DATA:
 - A. MOUNTING METHOD: STUD
 - B. MOUNTING DIM. - (4) 1/4-20 TH'D STUDS ON 3 X 3 11/16 CENTERS 5/8 HIGH
 3. TERMINAL DATA:
 - A. (8) TERMINALS
 - B. SOLDER TYPE 5/8 HIGH INSULATED
 4. FINISH: SMOOTH GRAY ENAMEL (TMC SPEC S115) EXCEPT TERMINAL END
 5. MARKING: METAL STAMP TERMINALS 1 THRU 8 AS SHOWN
MARK BOTTOM AS SHOWN PER TMC SPECIFICATION S 727.

REQ'D.	ITEM	PART NUMBER	DESCRIPTION	SYMBOL
O. POSE LIST OF MATERIAL				
MATERIAL			THE TECHNICAL MATERIEL CORP. MAMARONECK, NEW YORK	
FINISH			TITLE TRANSFORMER, POWER	
UNLESS OTHERWISE SPECIFIED DIMENSIONS ARE IN INCHES AND INCLUDE CHEMICALLY APPLIED OR PLATED FINISHES			DRAWN G.D.L. DATE 10-10-63 CHECKED JCB DATE 6-24-65 ELECT. DES. DATE MECH. DES. DATE	FINAL APPROV. [Signature] DATE 12/2/65 SHEET REV. LTR.
DECIMALS	TOLERANCES		FRACTIONS	
.X ± .05			± 1/64	
.XX ± .01			ANGLES	
.XXX ± .005			± 0° 30'	



MARK AS SHOWN IN BLACK LETTERS 1/8 HIGH GOTHIC. MARKING PROCESS: AS PER TMC SPEC. S727

NOTES

1	VLLA-1	
Q'TY./UNIT	MODEL USED ON	ASS'Y. NO.
SCALE 1:2	CODE	S401-30 (5348)

THE CONTENTS OF THIS DRAWING ARE THE EXCLUSIVE PROPERTY OF THE TECHNICAL MATERIEL CORP. ITS UNAUTHORIZED USE OR REPRODUCTION IN WHOLE OR IN PART IS STRICTLY FORBIDDEN.

5

4

3

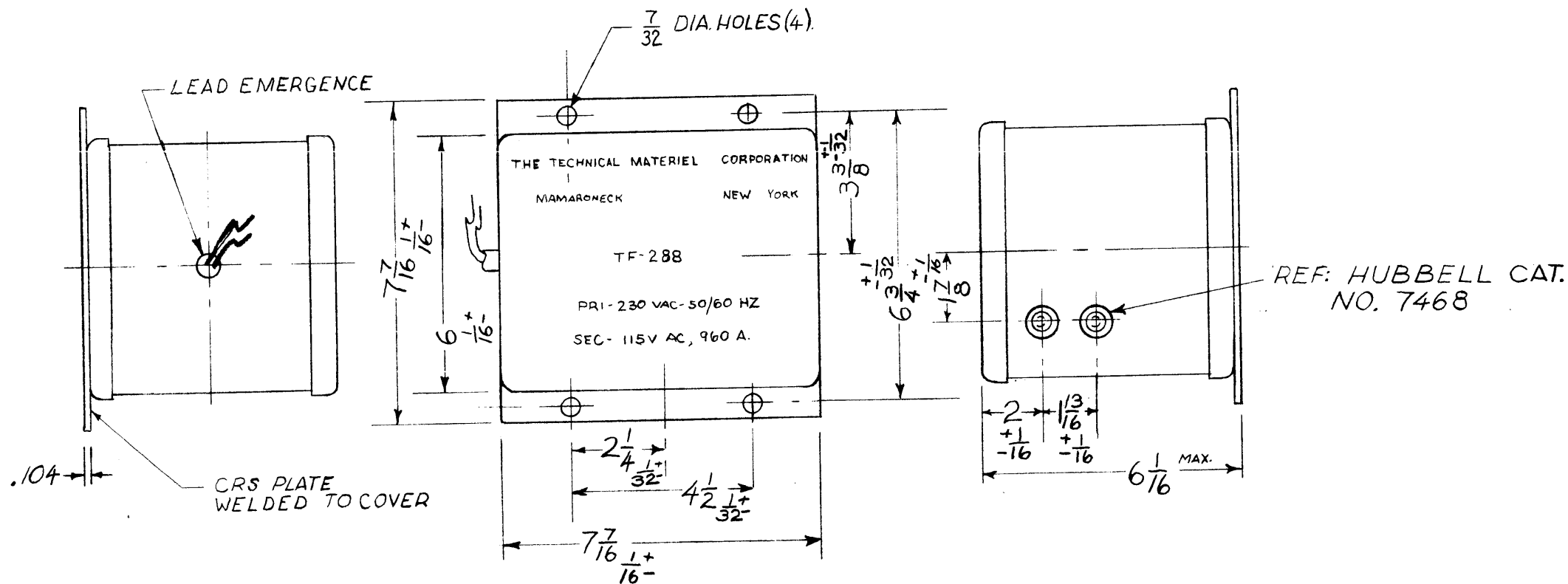
2

1

REVISIONS

SYM ZONE	LTR	DESCRIPTION	DATE	E.M.N.NO	DRAFT	CHKD	APPD
O		ORIGINAL REL. FOR PROD.	5-16-64		SRG	AA	RDC
A		TFZ 88 PICT. CHANGED COMPLETELY TO CONFORM WITH BTC 5647(MFG)	1-22-69	19203	GC	FB	FB

TF-288



SPECIFICATIONS:

MECHANICAL~

- CASE-HERMETICALLY SEALED IN RECTANGULAR STEEL CASE MILTYPE YY.
- FINISH-S115, TMC SMOOTH GREY ENAMEL
- STAMPING-SCHEMATIC AND LETTERING TO BE STAMPED IN BLACK ON TOP OF TRANSF. AS SHOWN

ELECTRICAL~

- 230 VAC TO 115 VAC, 960 VA

TRANSFORMER TO BE MANUFACTURED IN ACCORDANCE WITH MIL SPEC. T-27-A EXCEPT THAT MIL T-27-A SHALL NOT APPEAR ON THE TRANSFORMER AND QUALIFICATION TESTING IS NOT REQUIRED.

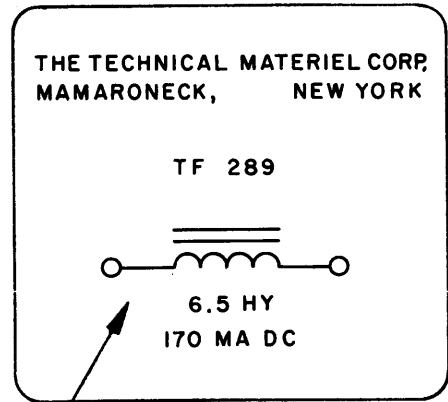
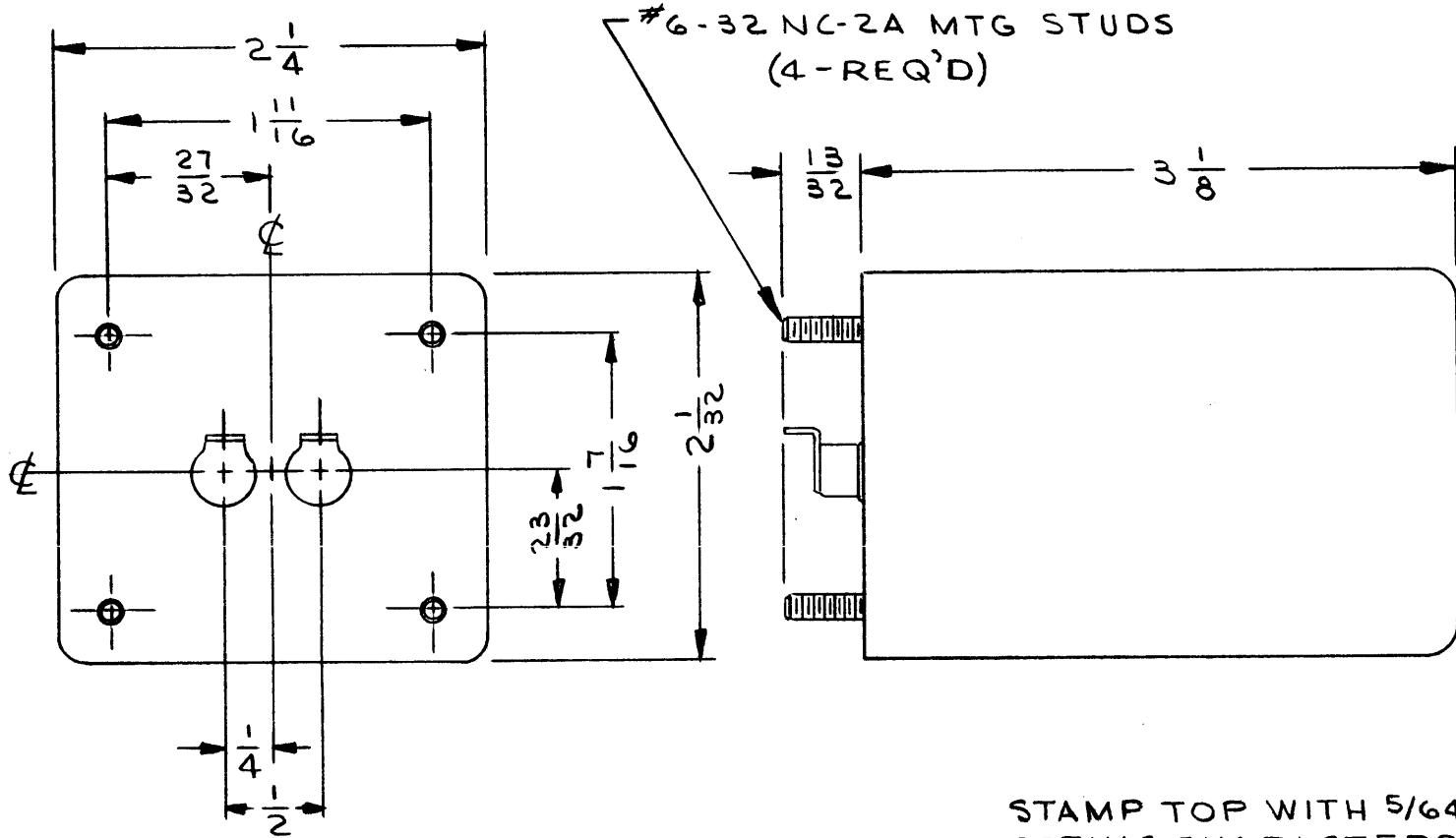
REQ'D		ITEM	PART NUMBER	DESCRIPTION	SYM.
F		BUDETTI		LIST OF MATERIAL	
FINAL APPROVAL		RDC	DATE 5/16/64	THE TECHNICAL MATERIEL CORP.	
MECH. DES.		ASC	DATE 5/8/64	MAMARONECK, NEW YORK	
ELECT. DES.		FB LB	DATE	TRANSFORMER POWER	
CHECKED		AA	DATE		
DRAWN		SRG GE	DATE 12-3-63	SIZE	ISSUE
MATERIAL				B	A
FINISH				CODE IDENT. NO.	DWG NO.
				82679	TF-288
				SCALE	SHEET OF
					1

NOTICE TO PERSONS RECEIVING THIS DRAWING
 THE TECHNICAL MATERIEL CORPORATION claims proprietary right in the material disclosed hereon. This drawing is issued in confidence for engineering information only and may not be reproduced or used to manufacture anything shown hereon without permission from THE TECHNICAL MATERIEL CORPORATION to the user. This drawing is loaned for mutual assistance and is subject to recall at any time.

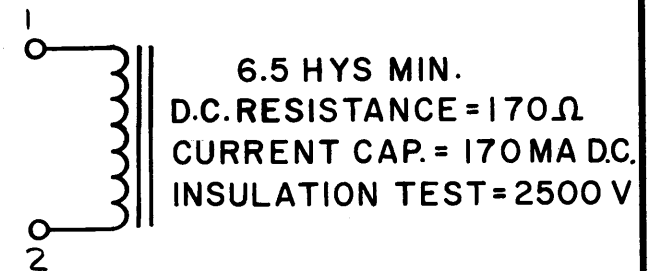
REVISIONS

SYM	DESCRIPTION	DATE	E.M.N. NO.	DRAFT	CHKD	APPD
X	EXPERIMENTAL RELEASE	4-28-64	X	A.M.	@	MS
O	ORIGINAL RELEASE FOR PRODUCTION	4/28/64	O	A.M.		

TF 289



STAMP TOP WITH 5/64 HIGH GOTHIC CHARACTERS IN BLK INK AS SHOWN.



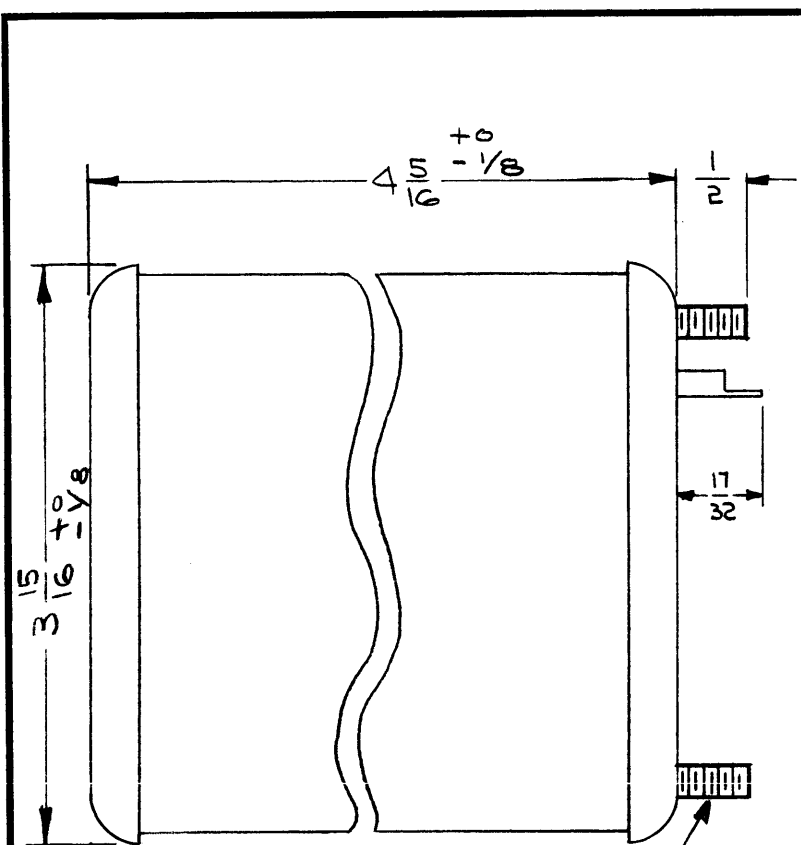
NOTE:-

FILTER CHOKE TO BE MANUFACTURED IN ACCORDANCE TO SPEC. MIL-T-27A, EXCEPT QUALIFICATION TESTING & MIL-T-27A MARKINGS ARE NOT REQUIRED.

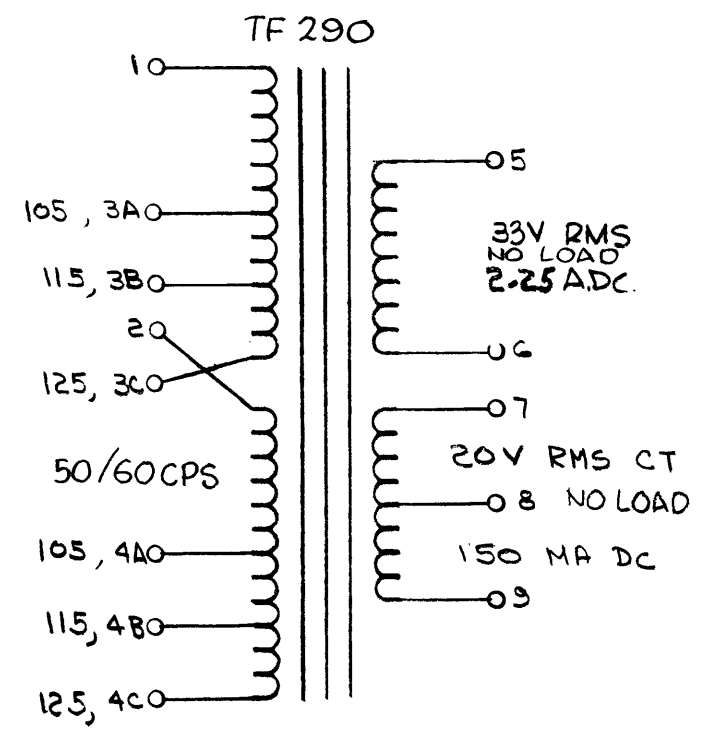
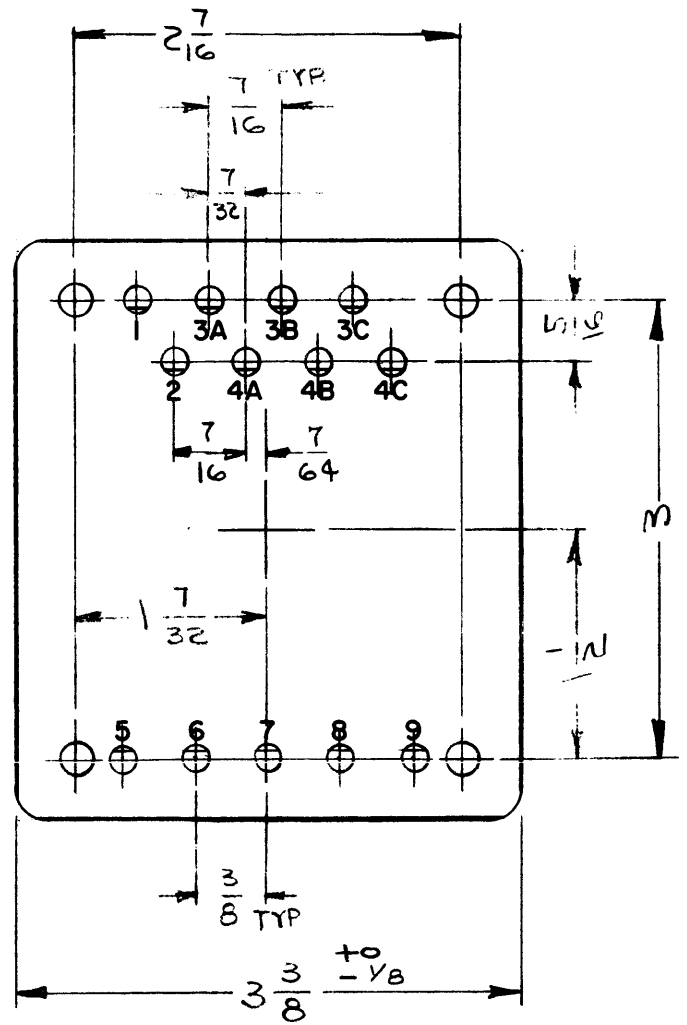
1	GPR-92	
QTY./UNIT	MODEL USED ON	ASS'Y. NO.
SCALE	CODE	
1:1	C	S401-30
THE CONTENTS OF THIS DRAWING ARE THE EXCLUSIVE PROPERTY OF THE TECHNICAL MATERIEL CORP. ITS UNAUTHORIZED USE OR REPRODUCTION IN WHOLE OR IN PART IS STRICTLY FORBIDDEN.		

REQ'D.	ITEM	PART NUMBER	DESCRIPTION	SYMBOL
LIST OF MATERIAL				
MATERIAL		THE TECHNICAL MATERIEL CORP. MAMARONECK, NEW YORK		
FINISH		TITLE		
S-115 T.M.C. GRAY		FILTER CHOKE		
UNLESS OTHERWISE SPECIFIED DIMENSIONS ARE IN INCHES AND INCLUDE CHEMICALLY APPLIED OR PLATED FINISHES		DRAWN J. LESHINSKI	DATE 4/27/64	FINAL APPROVAL [Signature]
		CHECKED @	DATE 4/28/64	DATE 4/28/64
DECIMALS .X ± .05 .XX ± .01 .XXX ± .005		FRACTIONS ± 1/64 ANGLES ± 0° 30'		TOLERANCES
		ELECT. DES. [Signature]	DATE 4-28-64	TF 289
		MECH. DES. [Signature]	DATE 4-28-64	REV. LTR.

NOTES



#10-32 MTG STUDS (4 REQ)
 TO BE PLACED ON TOP OF TRANSFORMER
 THE TECHNICAL MATERIEL CORPORATION
 MAMARONECK NEW YORK



NOTES

1	RTPA-1	
Q'TY./UNIT	MODEL USED ON	ASS'Y. NO.
SCALE	CODE	5401-30 (6261)

THE CONTENTS OF THIS DRAWING ARE THE EXCLUSIVE PROPERTY OF THE TECHNICAL MATERIEL CORP. ITS UNAUTHORIZED USE OR REPRODUCTION IN WHOLE OR IN PART IS STRICTLY FORBIDDEN.

TF 290

REVISIONS

SYM	DESCRIPTION	DATE	E.M.N. NO.	DRAFT	CHKD	APPD
Ø	ORIGINAL RELEASE FOR PRODUCTION	3-29-65	AA	BJ	J.M.	N.L.

CASE DATA:

- A. FULLY ENCLOSED
- B. GRAY
- C. HERMETICALLY SEALED
- D. MATERIAL STEEL, HOT TINNED DIPPED

PRIMARY WINDINGS:

- A. 105V, 115V, 125V
- B. 50/60 CPS
- C. SINGLE

SECONDARY WINDINGS:

- A. 33V RMS, NO LOAD, 20V RMS NO LOAD
- B. 225A DC, 150MA DC

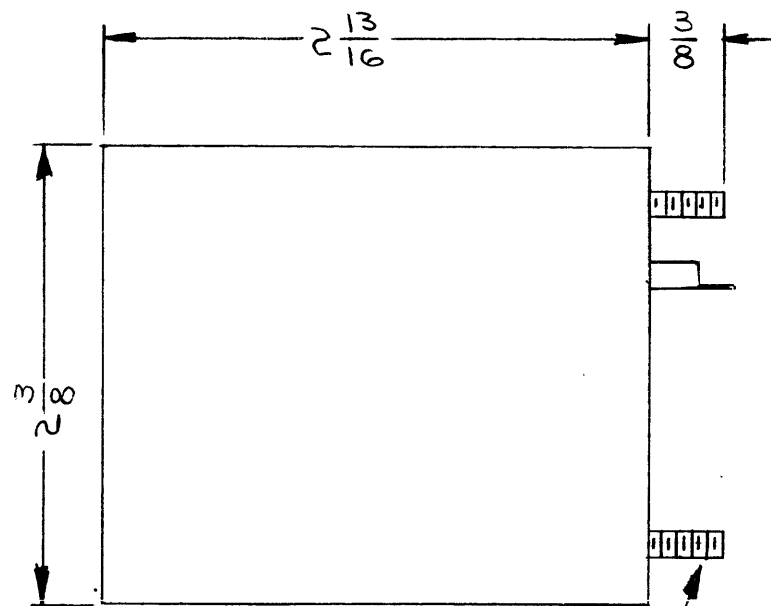
TERMINAL DATA:

- A. QUANTITY 13
- B. SOLDER LUG

MARKING:

- A. SCHEMATIC TO BE PLACED ON TOP OF TRANSFORMER.
- B. MARKING METHOD AS PER TMC SPEC S727.
- C. LETTER AND NUMERALS TO BE GOTHIC, ALL MARKING TO BE IN BLACK.

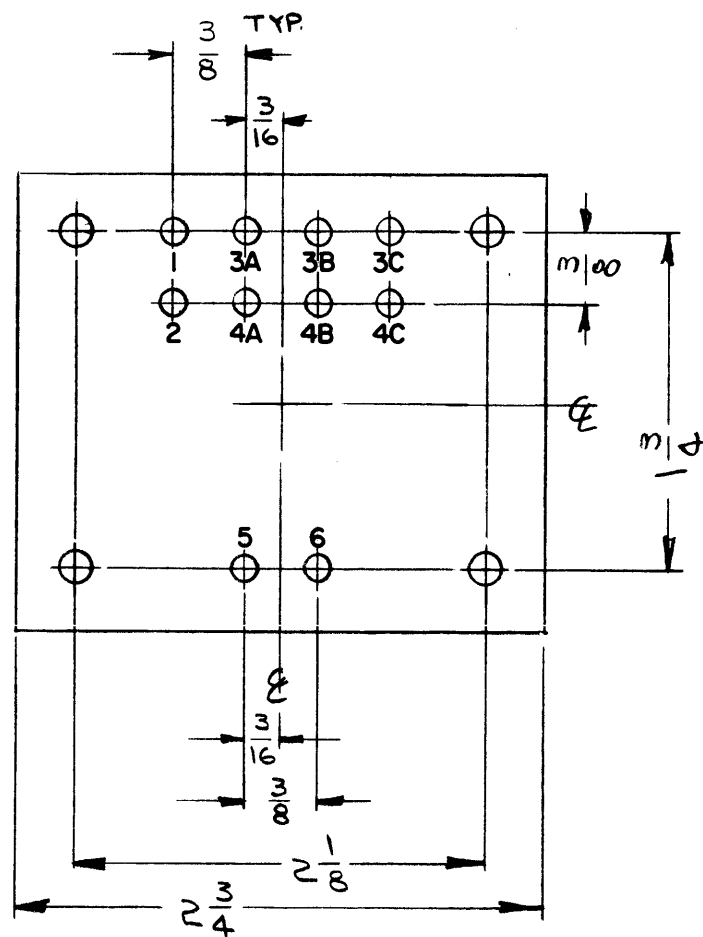
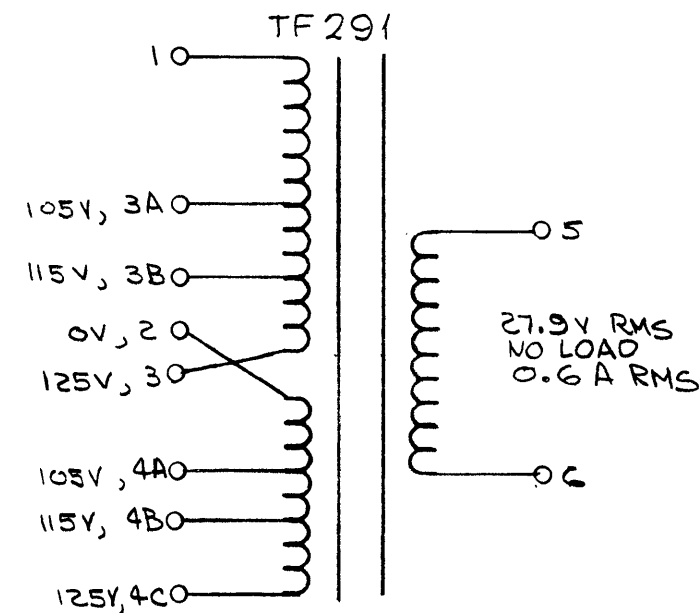
REQ'D.	ITEM	PART NUMBER	DESCRIPTION	SYMBOL
EATON LIST OF MATERIAL				
MATERIAL			THE TECHNICAL MATERIEL CORP. MAMARONECK, NEW YORK	
FINISH			TITLE TRANSFORMER, POWER	
UNLESS OTHERWISE SPECIFIED DIMENSIONS ARE IN INCHES AND INCLUDE CHEMICALLY APPLIED OR PLATED FINISHES				
DECIMALS	TOLERANCES		FRACTIONS	
.X ± .05			± 1/32	
.XX ± .01			ANGLES	
.XXX ± .005			± 0° 30'	
DRAWN	DATE	FINAL APPROVAL	DATE	
<i>G. Sanchez</i>	3-29-65	<i>MM</i>	4/5/65	
CHECKED	DATE			
<i>J.P.</i>	3/29/65			
ELECT. DES.	DATE			
<i>J.P.</i>	4/5/65			
MECH. DES.	DATE			
SHEET			TF 290	Ø
				REV. LTR.



*6-32 MTG STUDS
(4 REQ)

TO BE PLACED ON TOP OF TRANSFORMER.

THE TECHNICAL MATERIEL CORPORATION
MAMARONECK NEW YORK



TF291

REVISIONS

SYM	DESCRIPTION	DATE	E.M.N. NO.	DRAFT	CHKD	APPD
Ø	ORIGINAL RELEASE FOR PRODUCTION	3/29/65			J.M.	NC

CASE DATA:

- A. FULLY ENCLOSED
- B. GRAY
- C. HERMETICALLY SEALED
- D. MATERIAL STEEL, HOT TINNED DIPPED

PRIMARY WINDINGS:

- A. 105V, 115V, 125V
- B. 50/60 CPS
- C. SINGLE

SECONDARY WINDING:

- A. 27.9V RMS, NO LOAD
- B. 0.6A

TERMINAL DATA:

- A. QUANTITY 10
- B. SOLDER LUG

MARKING:

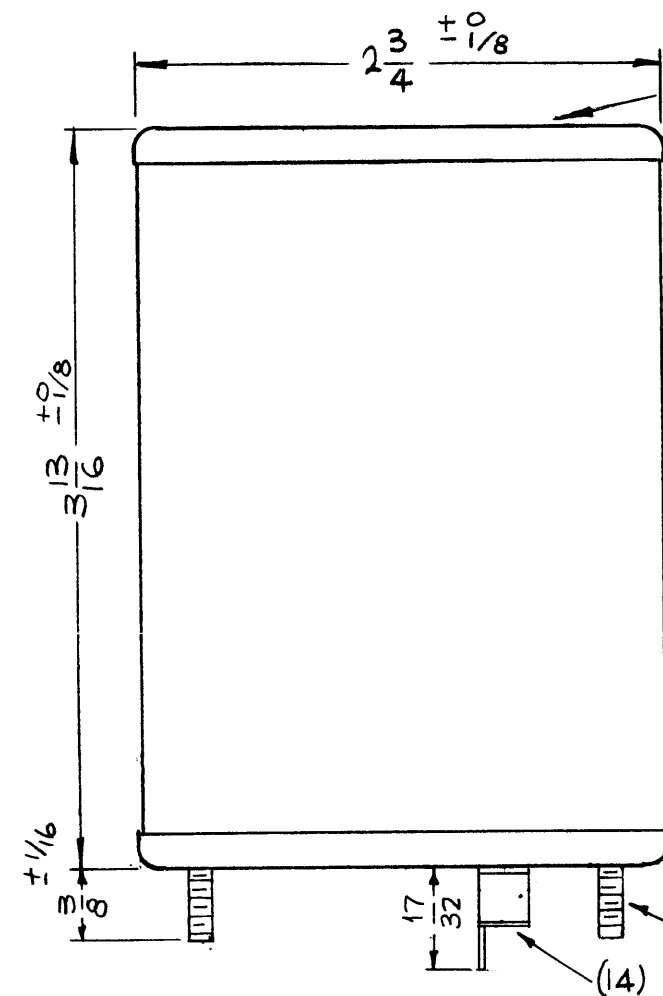
- A. SCHEMATIC TO BE PLACED ON TOP OF TRANSFORMER.
- B. MARKING METHOD AS PER TMC SPEC. S727.
- C. LETTERS AND NUMERALS TO BE GOTHIC, ALL MARKING TO BE IN BLACK.

REQ'D.	ITEM	PART NUMBER	DESCRIPTION	SYMBOL
EATON LIST OF MATERIAL				
MATERIAL			THE TECHNICAL MATERIEL CORP. MAMARONECK, NEW YORK	
FINISH			TRANSFORMER, POWER	
UNLESS OTHERWISE SPECIFIED DIMENSIONS ARE IN INCHES AND INCLUDE CHEMICALLY APPLIED OR PLATED FINISHES			DRAWN: <i>G. Jensen</i> CHECKED: <i>...</i> ELECT. DES.: <i>...</i> MECH. DES.: <i>...</i>	DATE: 3-29-65 DATE: 3/29/65 DATE: 4/5/65
Q'TY./UNIT: 1:1 MODEL USED ON: C ASS'Y. NO.: S401-30 (6243B)			FINAL APPROVAL: <i>...</i> DATE: 4/5/65 SHEET: TF291	DATE: 4/5/65 REV. LTR.: Ø

NOTES

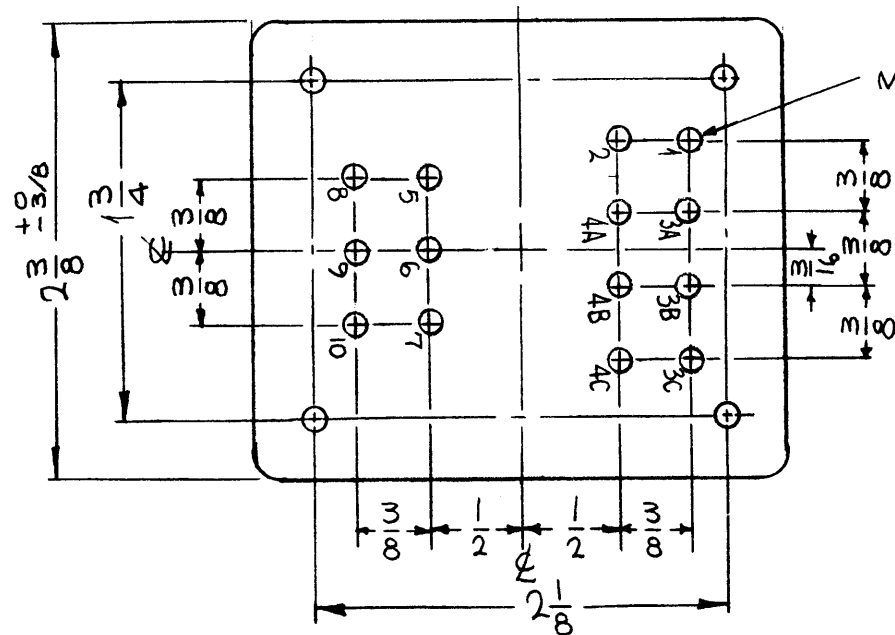
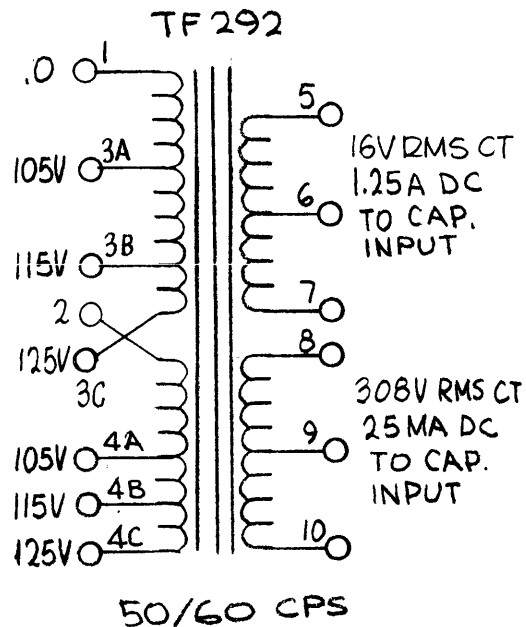
THE CONTENTS OF THIS DRAWING ARE THE EXCLUSIVE PROPERTY OF THE TECHNICAL MATERIEL CORP. ITS UNAUTHORIZED USE OR REPRODUCTION IN WHOLE OR IN PART IS STRICTLY FORBIDDEN.

DECIMALS: .X ± .05, .XX ± .01, .XXX ± .005
 FRACTIONS: ± 1/32, ANGLES: ± 0° 30'



TO BE PLACED ON TOP OF TRANSFORMER

THE TECHNICAL MATERIEL CORPORATION
MAMARONECK NEW YORK



NOTES

THE CONTENTS OF THIS DRAWING ARE THE EXCLUSIVE PROPERTY OF THE TECHNICAL MATERIEL CORP. ITS UNAUTHORIZED USE OR REPRODUCTION IN WHOLE OR IN PART IS STRICTLY FORBIDDEN.

TF 292

REVISIONS

SYM	DESCRIPTION	DATE	E.M.N. NO.	DRAFT	CHKD	APPD
X	EXP. RELEASE	2-25-65	X	SRG	J.M	JL
Ø	ORIGINAL RELEASE FOR PRODUCTION	3-11-65	-M-	SRG	J.M	

CASE DATA:

- A. TOLERANCE ± 1/32
- B. FULLY ENCLOSED
- C. GRAY
- D. HERMETICALLY SEALED
- E. MATERIAL: STEEL HOT TIN DIPPED

PRIMARY WINDINGS:

- A. 105V, 115V, 125V
- B. 50/60 CYCLES

SECONDARY WINDINGS: (NO LOAD)

- A. 308 RMS CENTER TAPPED, 16V RMS
- B. 25 MA; 1.25A DC

TERMINAL DATA:

- A. QUANTITY 14
- B. SOLDER LUG

MARKING: SCHEMATIC TO BE STAMPED IN BLACK, LETTERING GOTHIC, AS PER TMC SPEC. S-727 LOCATED AS SHOWN.

REQ'D.	ITEM	PART NUMBER	DESCRIPTION	SYMBOL
--------	------	-------------	-------------	--------

EATON LIST OF MATERIAL

MATERIAL	SEE SPECS	THE TECHNICAL MATERIEL CORP. MAMARONECK, NEW YORK
FINISH	SEE SPECS	TITLE

UNLESS OTHERWISE SPECIFIED DIMENSIONS ARE IN INCHES AND INCLUDE CHEMICALLY APPLIED OR PLATED FINISHES		DRAWN	SRG	DATE	3/11/65	FINAL APPROVAL	<i>[Signature]</i>	DATE	3/23/65
DECIMALS	.X ± .05 .XX ± .01 .XXX ± .005	TOLERANCES	FRACTIONS	± 1/64 ANGLES ± 0° 30'	ELECT. DES.	<i>[Signature]</i>	DATE	3/12/65	TF 292
				MECH. DES.	<i>[Signature]</i>	DATE			Ø

1	RTIA-1	Q'TY./UNIT	1:1	MODEL USED ON	C	ASS'Y. NO.	S401-30 (6240B)
				SHEET		REV. LTR.	

STANDARD DRAWING

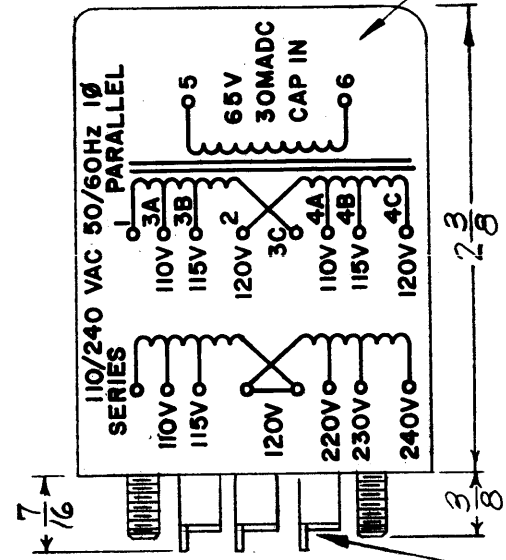
TF 293

REVISIONS

SYM	DESCRIPTION	DATE	E.M.N. NO.	DRAFT	CHKD	APPD
Ø	REV. THE SPECIFICATIONS	12/7/66	Ø	CV		

THE TECHNICAL MATERIEL CORP.
MAMARONECK NEW YORK

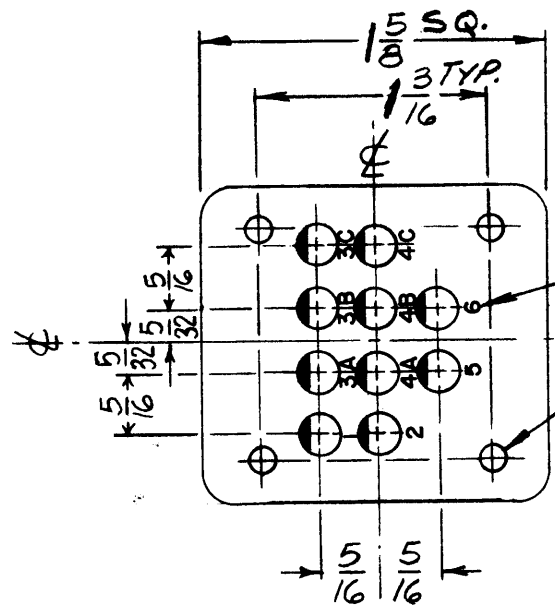
MARK AS SHOWN
PER TMC SPEC S727
BLACK GOTHIC LETTERING
& LINEWORK



2 3/8

3/8

7/32 DIA.



METAL STAMP TERMINALS
AS SHOWN

6-32 x 3/8 LG. STUDS
4 REQ'D.

—ELECTRICAL SPECIFICATIONS—

TRANSFORMER, POWER, ISOLATION & STEP-DOWN
COIL DATA:
 PRIMARY WINDING: 50/60CPS, 1 PHASE
 VOLTAGE: 110, 115, 120/220, 230, 240
 SECONDARY WINDING: 65 V, 20 MADC CAP IN

—MECHANICAL SPECIFICATIONS—

CASE DATA: HERMETICALLY SEALED
 CR STEEL
 BODY DIMENSIONS- 1 5/8" LENGTH & WIDTH
 2 3/8" HIGH

MOUNTING DATA:
 MOUNTING METHOD: STUD
 MOUNTING DIMENSIONS: (4) 6-32 THD STUDS ON 1 3/16
 CENTERS 3/8 HIGH

TERMINAL DATA: (10) TERMINALS
 SOLDER LUG TYPE 7/16 HIGH

FINISH: SMOOTH GRAY ENAMEL (TMC SPEC S115) EXCEPT TERMINAL END

MARKING: METAL STAMP TERMINALS 1 THRU 10 AS SHOWN.
 MARK TOP AS SHOWN PER TMC SPEC S727.

REQ'D.	ITEM	PART NUMBER	DESCRIPTION	SYMBOL
--------	------	-------------	-------------	--------

LIST OF MATERIAL

MATERIAL	THE TECHNICAL MATERIEL CORP. MAMARONECK, NEW YORK			
FINISH	TITLE TRANSFORMER, POWER			

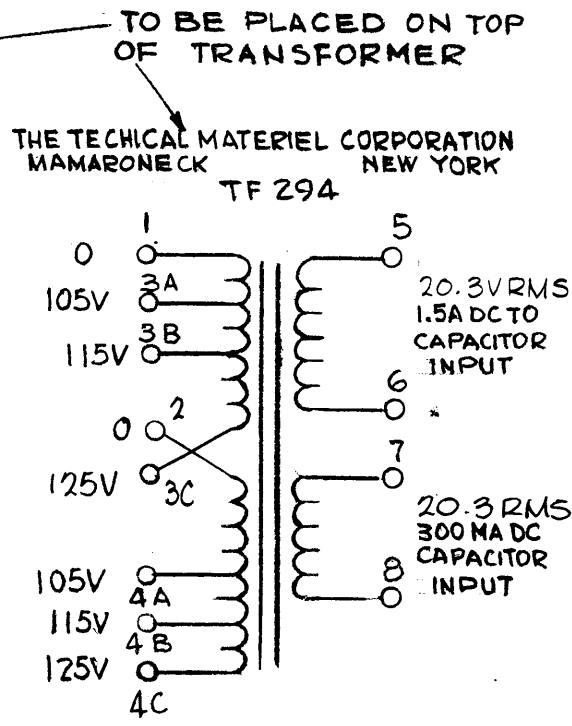
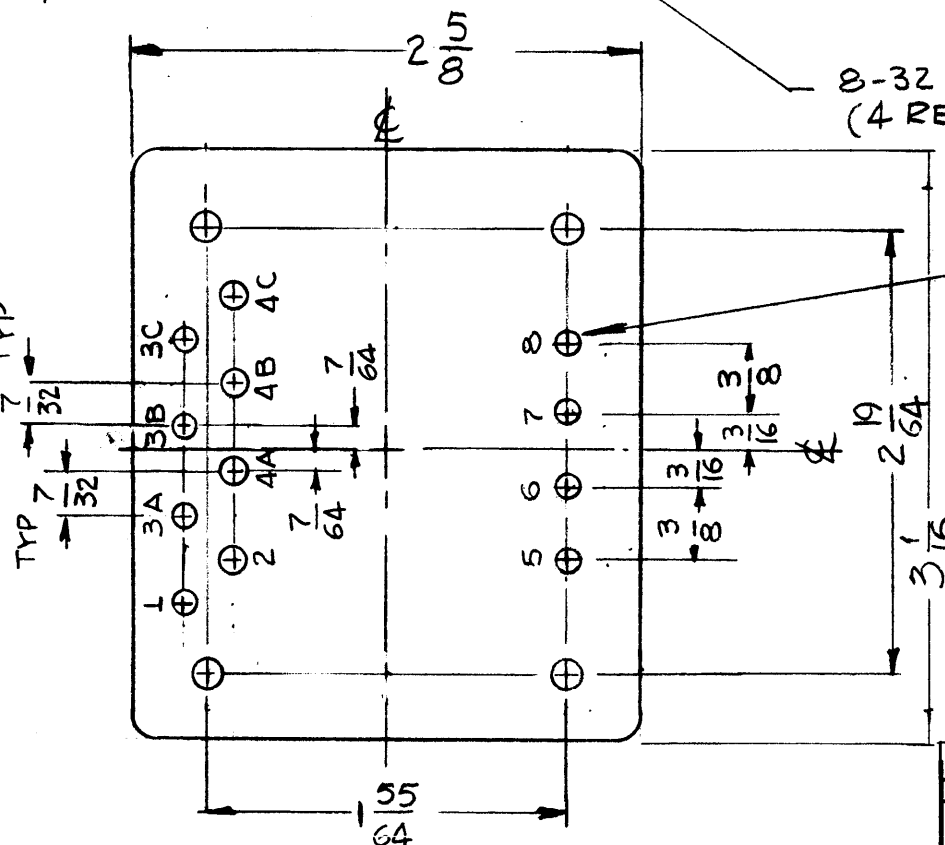
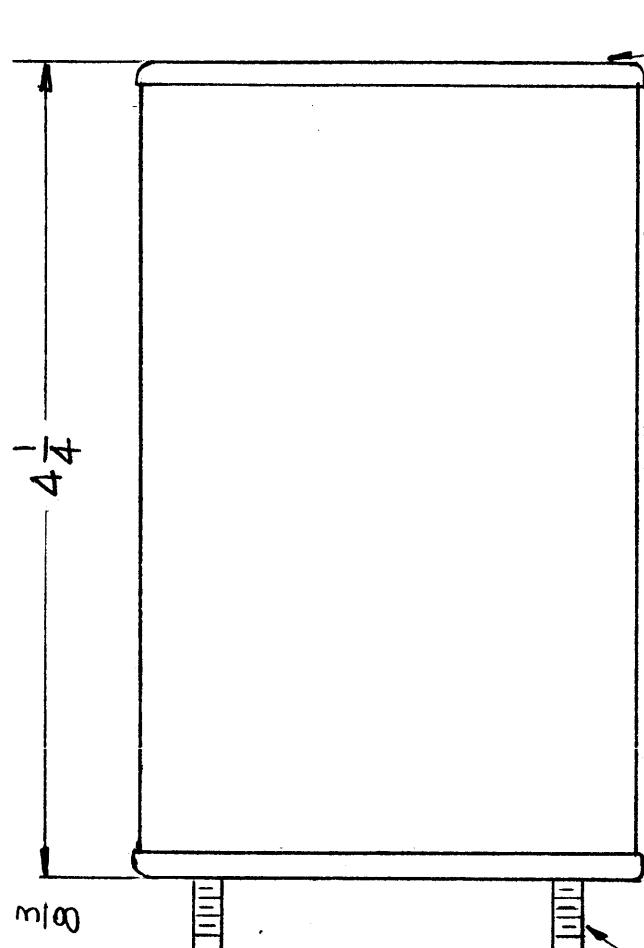
Q'TY./UNIT	MODEL USED ON	ASS'Y. NO.
—	ARCA-1	
SCALE	CODE	
—	C	S401-30 (6242)

UNLESS OTHERWISE SPECIFIED DIMENSIONS ARE IN INCHES AND INCLUDE CHEMICALLY APPLIED OR PLATED FINISHES		DRAWN H. AUSTIN	DATE 3/25/66	FINAL APPROVAL	DATE 12/6/66
DECIMALS .X ± .05 .XX ± .01 .XXX ± .005		CHECKED L.H.	DATE 10/27/66	TF 293	Ø
FRACTIONS ± 1/64 ANGLES ± 0° 30'		ELECT. DES. M.C.	DATE 11/2/66		
TOLERANCES		MECH. DES.	DATE	SHEET	REV. LTR.

NOTES

THE CONTENTS OF THIS DRAWING ARE THE EXCLUSIVE PROPERTY
OF THE TECHNICAL MATERIEL CORP. ITS UNAUTHORIZED USE OR
REPRODUCTION IN WHOLE OR IN PART IS STRICTLY FORBIDDEN.

M.C. 981



THE TECHNICAL MATERIEL CORPORATION
MAMARONECK NEW YORK
TF 294

TF 294

REVISIONS

SYM	DESCRIPTION	DATE	E.M.N. NO.	DRAFT	CHKD	APPD
X	EXPERIMENTAL RELEASE	2-26-65	---	GDL	J.M	NL
Ø	ORIGINAL RELEASE FOR PRODUCTION	3-11-65	---	GDL	J.M	

CASE DATA:
 A. HERMETICALLY SEALED
 B. FULLY ENCLOSED
 C. GRAY
 D. MATERIAL: STEEL HOT TIN DIPPED

PRIMARY WINDINGS:
 A. 105, 115, 125V
 B. 50/60 CPS
 C. 1

SECONDARY WINDING
 A. 20.3V RMS; 20.3V RMS
 B. 1.5A DC, 300 MADC

TERMINAL DATA:
 A. QUANTITY 12
 B. SOLDER LUG

MARKING: SCHEMATIC TO BE STAMPED IN BLACK, LETTERING GOTHIC AS PER TMC SPEC. S-727 LOCATED AS SHOWN.

8-32 STUD
(4 REQ)

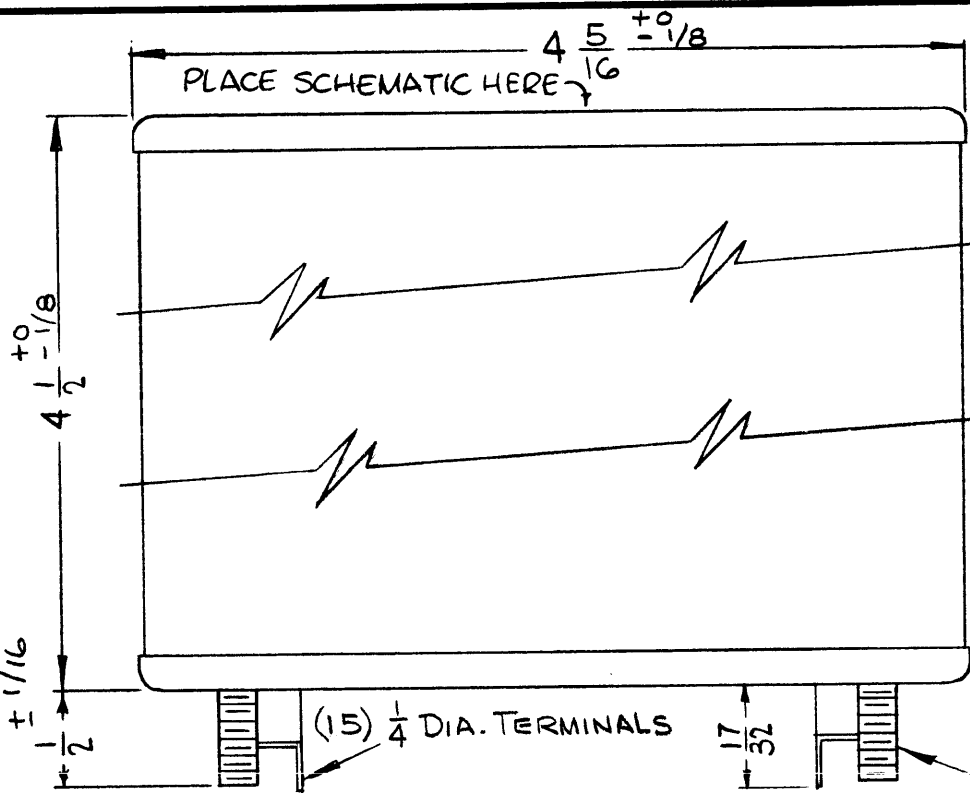
MARK ALL TERMINALS

REQ'D.	ITEM	PART NUMBER	DESCRIPTION	SYMBOL
EATON LIST OF MATERIAL				
MATERIAL		THE TECHNICAL MATERIEL CORP. MAMARONECK, NEW YORK		
FINISH		TITLE TRANSFORMER, POWER		
UNLESS OTHERWISE SPECIFIED DIMENSIONS ARE IN INCHES AND INCLUDE CHEMICALLY APPLIED OR PLATED FINISHES		DRAWN G.D.L.	DATE 2-26-65	FINAL APPROVAL <i>[Signature]</i>
		CHECKED <i>[Signature]</i>	DATE 3/11/65	DATE 3/23/65
DECIMALS .X ± .05 .XX ± .01 .XXX ± .005		TOLERANCES ± 1/64 ANGLES ± 0° 30'		ELECT. DES. <i>[Signature]</i>
		MECH. DES. <i>[Signature]</i>		DATE 3/13/65
				TF 294
				Ø
				SHEET
				REV. LTR.

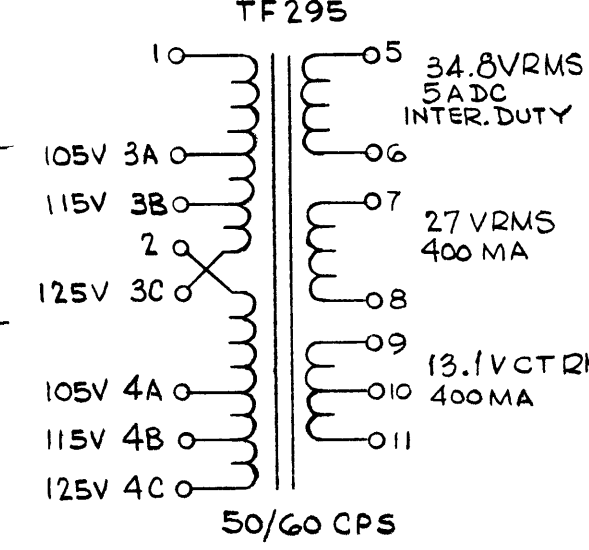
1	RTPA-1	
Q'TY./UNIT	MODEL USED ON	ASS'Y. NO.
SCALE 1:1	CODE C	S 401-30 (6241B)

THE CONTENTS OF THIS DRAWING ARE THE EXCLUSIVE PROPERTY OF THE TECHNICAL MATERIEL CORP. ITS UNAUTHORIZED USE OR REPRODUCTION IN WHOLE OR IN PART IS STRICTLY FORBIDDEN.

NOTES

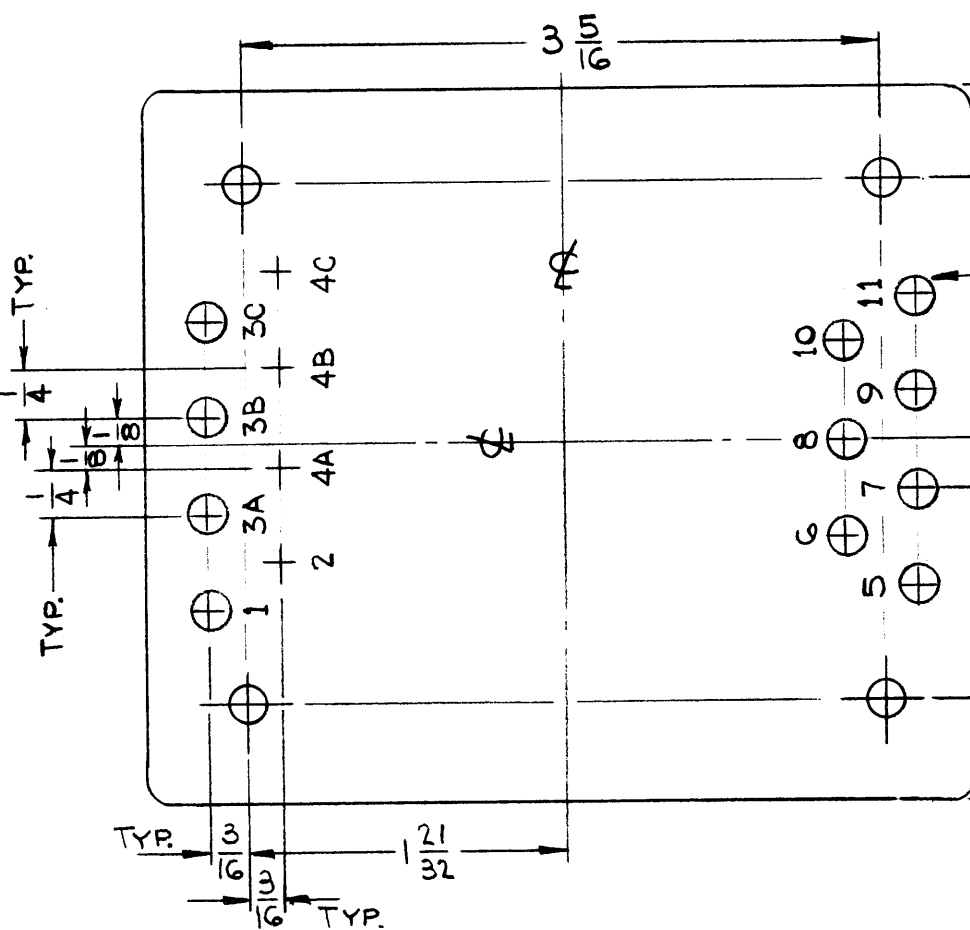


THE TECHNICAL MATERIEL CORPORATION
MAMARONECK NEW YORK



TF 295

TO BE PLACED ON TOP OF TRANSFORMER



10-32 STUD
4 REQ.

MARK ALL TERMINALS

REVISIONS

SYM	DESCRIPTION	DATE	E.M.N. NO.	DRAFT	CHKD	APPD
X	EXPERIMENTAL RELEASE	2/26/65		HLA	J.M	NL
Ø	ORIGINAL RELEASE FOR PRODUCTION	3/11/65		HLA	J.M	

- CASE DATA:
- A. FULLY ENCLOSED
 - B. GRAY
 - C. HERMETICALLY SEALED
 - D. MATERIAL: STEEL HOT TIN DIPPED

- PRIMARY WINDINGS:
- A. 105, 115, 1.25V
 - B. 50/60 CPS
 - C. SINGLE

- SECONDARY WINDING (NO LOAD)
- A. 34.8V, 27V, 13.1V
 - B. 5A; 400MA; 400MA
 - C. CENTER TAPPED

- TERMINAL DATA:
- A. QUANTITY 15
 - B. SOLDER LUG

MARKING: SCHEMATIC TO BE STAMPED IN BLACK, LETTERING GOTHIC, AS PER TMC SPEC. S727 LOCATED AS SHOWN.

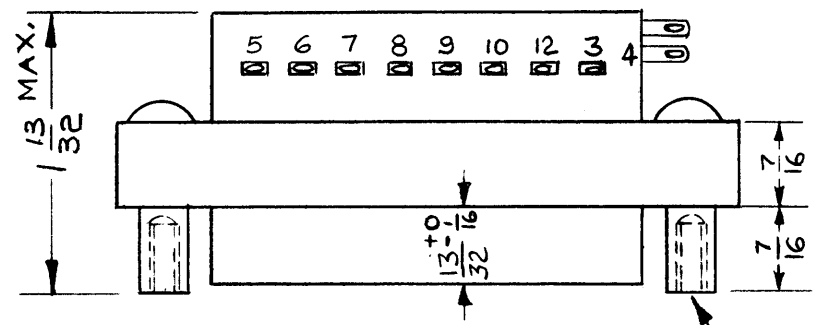
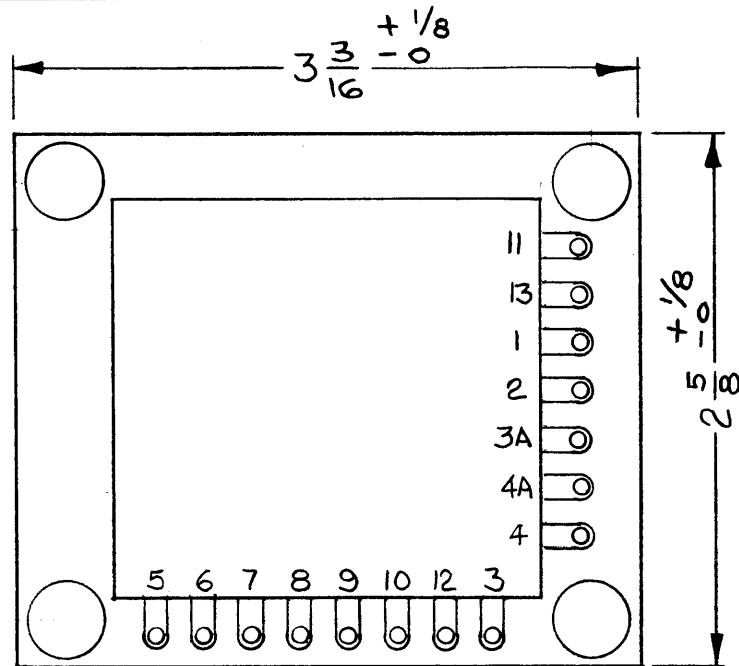
REQ'D.	ITEM	PART NUMBER	DESCRIPTION	SYMBOL
EATON LIST OF MATERIAL				
MATERIAL			THE TECHNICAL MATERIEL CORP. MAMARONECK, NEW YORK	
FINISH			TITLE TRANSFORMER, POWER	

UNLESS OTHERWISE SPECIFIED DIMENSIONS ARE IN INCHES AND INCLUDE CHEMICALLY APPLIED OR PLATED FINISHES		DRAWN H. AUSTIN	DATE 2-26-65	FINAL APPROVAL <i>[Signature]</i>	DATE 2/23/65
DECIMALS .X ± .05 .XX ± .01 .XXX ± .005		CHECKED <i>[Signature]</i>	DATE 3/11/65	TF 295	
FRACTIONS ± 1/64 ANGLES ± 0° 30'		ELECT. DES. <i>[Signature]</i>	DATE 3/12/65	Ø	
TOLERANCES		MECH. DES.	DATE	SHEET	REV. LTR.

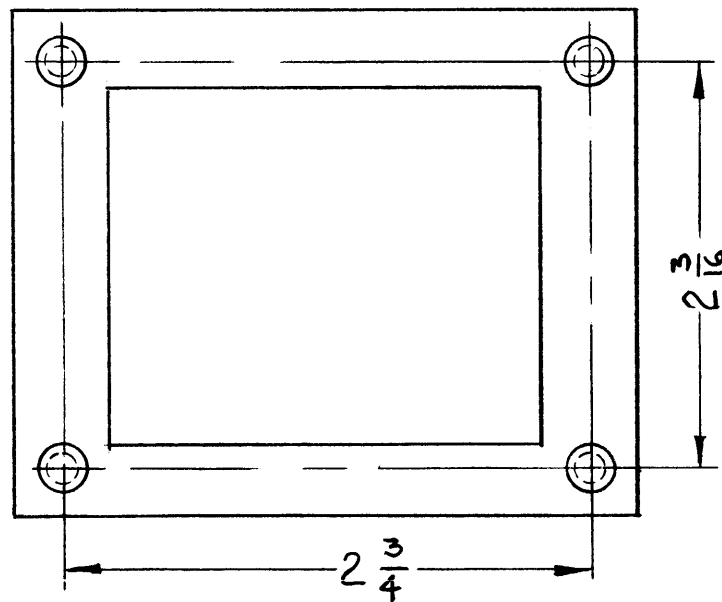
Q'TY./UNIT	MODEL USED ON	ASS'Y. NO.
SCALE 1:1	CODE C	S401-30 (5492)

THE CONTENTS OF THIS DRAWING ARE THE EXCLUSIVE PROPERTY OF THE TECHNICAL MATERIEL CORP. ITS UNAUTHORIZED USE OR REPRODUCTION IN WHOLE OR IN PART IS STRICTLY FORBIDDEN.

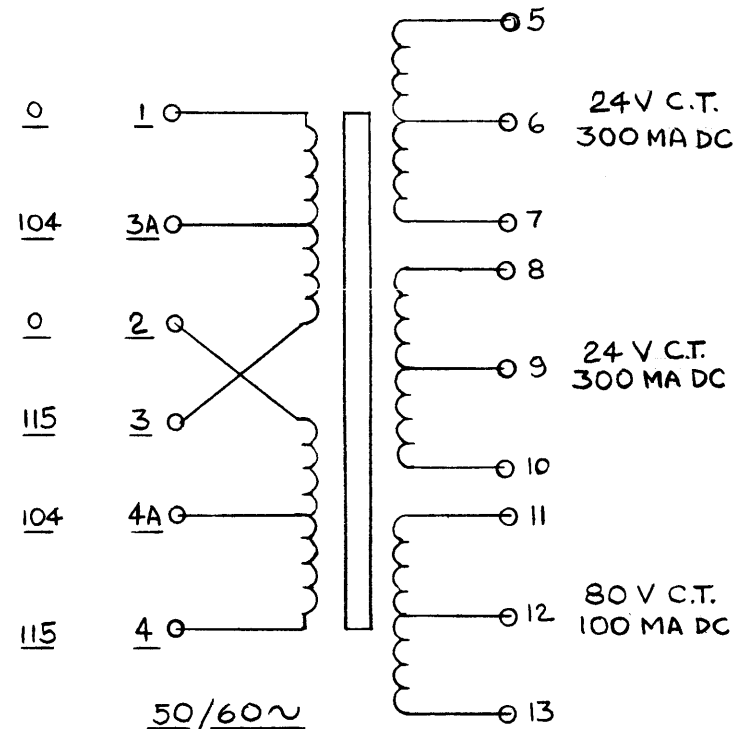
NOTES



TAPPED
6-32 X 3/16 DEEP
MIN. (4PL.)



NOTES



B
TF298

REVISIONS

SYM	DESCRIPTION	DATE	E.M.N. NO.	DRAFT	CHKD	APPD
X	EXPERIMENTAL RELEASE	6.26.64		WB		
Ø	ORIGINAL RELEASE FOR PRODUCTION	7/1/64	Ø	A.M.		
A	DIMS 3 3/16 ± WAS 3-1/4, TOL. ADDED TO 2-5/8 1-13/32 WAS 1-7/16	8-6-64	12029	W.B.	WB	TRC
B	TAPPING NOTE ADDED	11.3.64	12843	WB	W.B.	TRC

- TRANSFORMER, POWER
- CASE DATA: OPEN FRAME
- FINISH: BLACK EPOXY DIP
- PRIMARY WINDING INPUT DATA: 104-115V/208-230 VAC
- SECONDARY WINDING DATA:
 - VOLTAGE & CURRENT:
 - # 1 & 2 : 24 V AT 300MA CENTER TAP
 - # 3 : 80 V AT 100MA CENTER TAP
- TERMINAL DATA:
 - QUANTITY: 15
 - TYPE: SOLDER LUG

REQ'D.	ITEM	PART NUMBER	DESCRIPTION	SYMBOL
AALTONEN LIST OF MATERIAL				
MATERIAL			THE TECHNICAL MATERIEL CORP. MAMARONECK, NEW YORK	
FINISH			TITLE TRANSFORMER, POWER STR, STE, SMR, SME	
UNLESS OTHERWISE SPECIFIED DIMENSIONS ARE IN INCHES AND INCLUDE CHEMICALLY APPLIED OR PLATED FINISHES			DRAWN <i>WB</i> DATE 6.25.64 CHECKED <i>@</i> DATE 7-1-64 ELECT. DES. <i>A.P.L.</i> DATE <i>Wicker</i> MECH. DES. DATE	FINAL APPROVAL <i>RAC</i> TF 298 SHEET
DECIMALS .X ± .05 FRACTIONS ± 1/64 TOLERANCES .XX ± .01 ANGLES ± 0° 30' .XXX ± .005			DATE	REV. LTR. B

STR		
QTY./UNIT	MODEL USED ON	ASSY. NO.
SCALE <i>#</i>	CODE C	5401-30
THE CONTENTS OF THIS DRAWING ARE THE EXCLUSIVE PROPERTY OF THE TECHNICAL MATERIEL CORP. ITS UNAUTHORIZED USE OR REPRODUCTION IN WHOLE OR IN PART IS STRICTLY FORBIDDEN.		

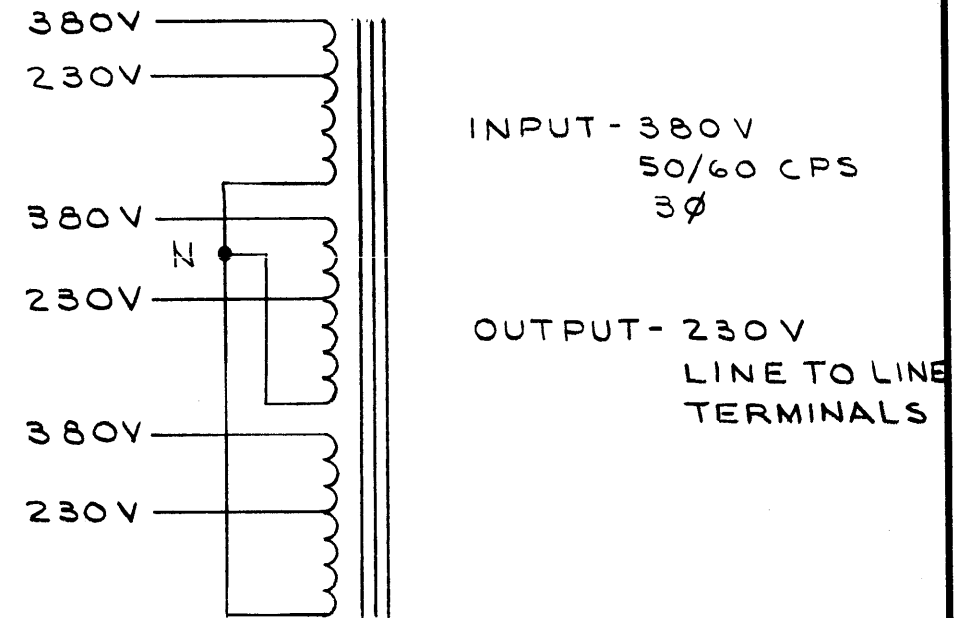
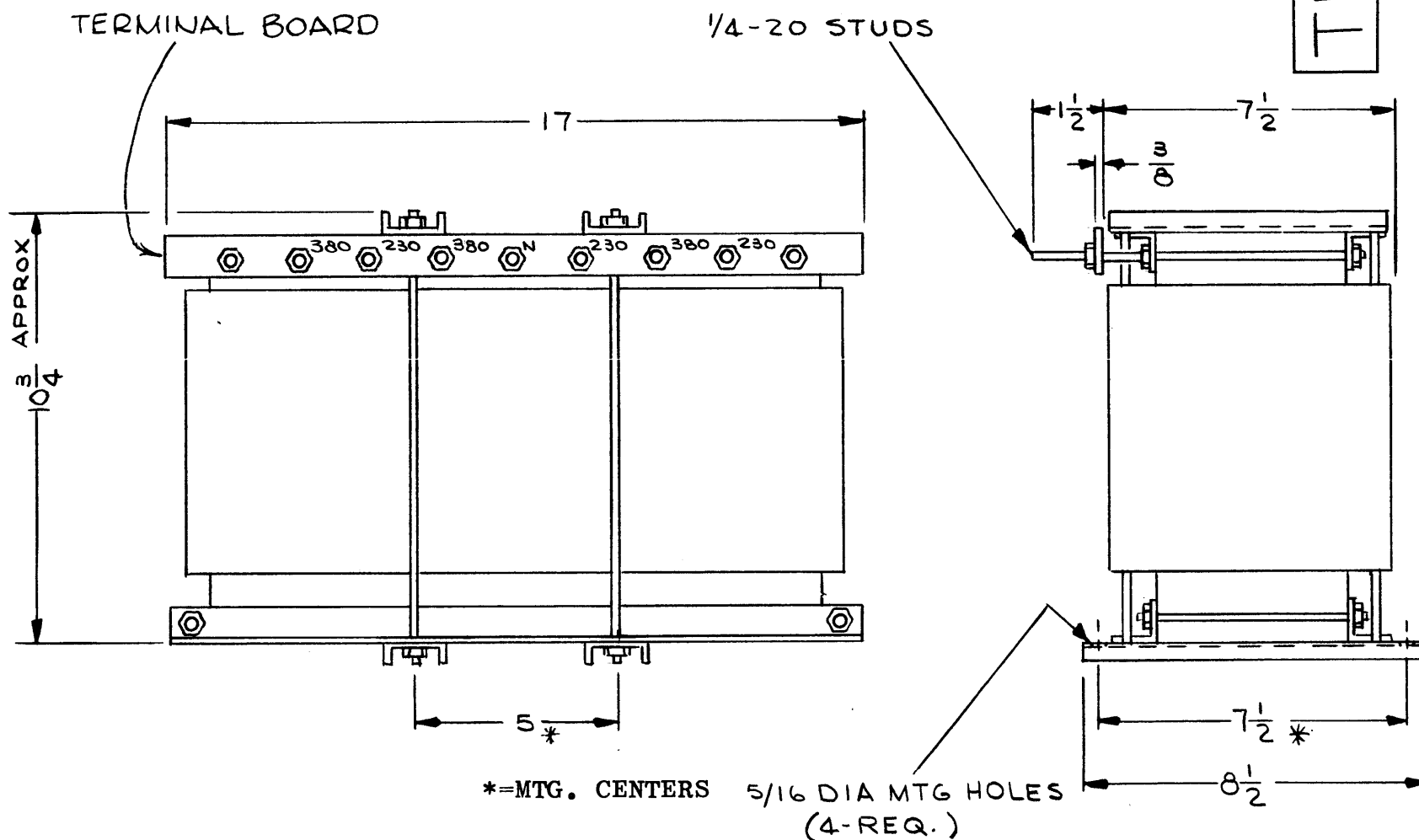
TF 299

REVISIONS

SYM	DESCRIPTION	DATE	E.M.N. NO.	DRAFT	CHKD	APPD
X1	REMOVED TWO NEUTRAL CONNECTIONS	2-17-67		L.A.K.		
Ø	ORIGINAL RELEASE FOR PRODUCTION	2-27-67		L.A.K.		

THE TECHNICAL MATERIEL CORPORATION
MAMARONECK NEW YORK

TF 299



SCHEMATIC - TO BE STAMPED ON XFMR

SPECIFICATIONS:

WINDING DATA:

- INPUT: 380V, 50/60 CPS, 3PH
- CURRENT RATING, 40A-RMS EACH PHASE
- TAPS- EACH WINDING TAPPED AT 200V.
- BREAKDOWN TEST VOLTAGE 2000V AC.
- CASE- OPEN FRAME.
- FINISH- S115 SMOOTH GREY ENAMEL EXCEPT TERMINAL BOARD & TERMINALS.

- TERMINAL BOARD: BLACK PHENOLIC 3/8" THICK.

NOTE: MFG- IN ACCORDANCE WITH/MIL-T-27A EXCEPT MIL-7-27A SHALL NOT APPEAR ON CASE AND QUALIFICATION TESTING IS NOT REQUIRED.

NOTES

1	GPT-40KE	
Q'TY./UNIT	MODEL USED ON	ASS'Y. NO.
NONE	C	5401-30 (6382)

THE CONTENTS OF THIS DRAWING ARE THE EXCLUSIVE PROPERTY OF THE TECHNICAL MATERIEL CORP. ITS UNAUTHORIZED USE OR REPRODUCTION IN WHOLE OR IN PART IS STRICTLY FORBIDDEN.

REQ'D.	ITEM	PART NUMBER	DESCRIPTION	SYMBOL
F. BUDETTI LIST OF MATERIAL				
MATERIAL			THE TECHNICAL MATERIEL CORP. MAMARONECK, NEW YORK	
FINISH			TITLE TRANSFORMER, POWER, FIXED	
UNLESS OTHERWISE SPECIFIED DIMENSIONS ARE IN INCHES AND INCLUDE CHEMICALLY APPLIED OR PLATED FINISHES				
DRAWN J.L.		DATE 7/20/65	FINAL APPROVAL [Signature] DATE 2/27/67	
CHECKED [Signature]		DATE	TF 299	
ELECT. DES. [Signature]		DATE	REV. LTR.	
MECH. DES.		DATE	SHEET	

DECIMALS	FRACTIONS
.X ± .05	± 1/64
.XX ± .01	ANGLES
.XXX ± .005	± 0° 30'