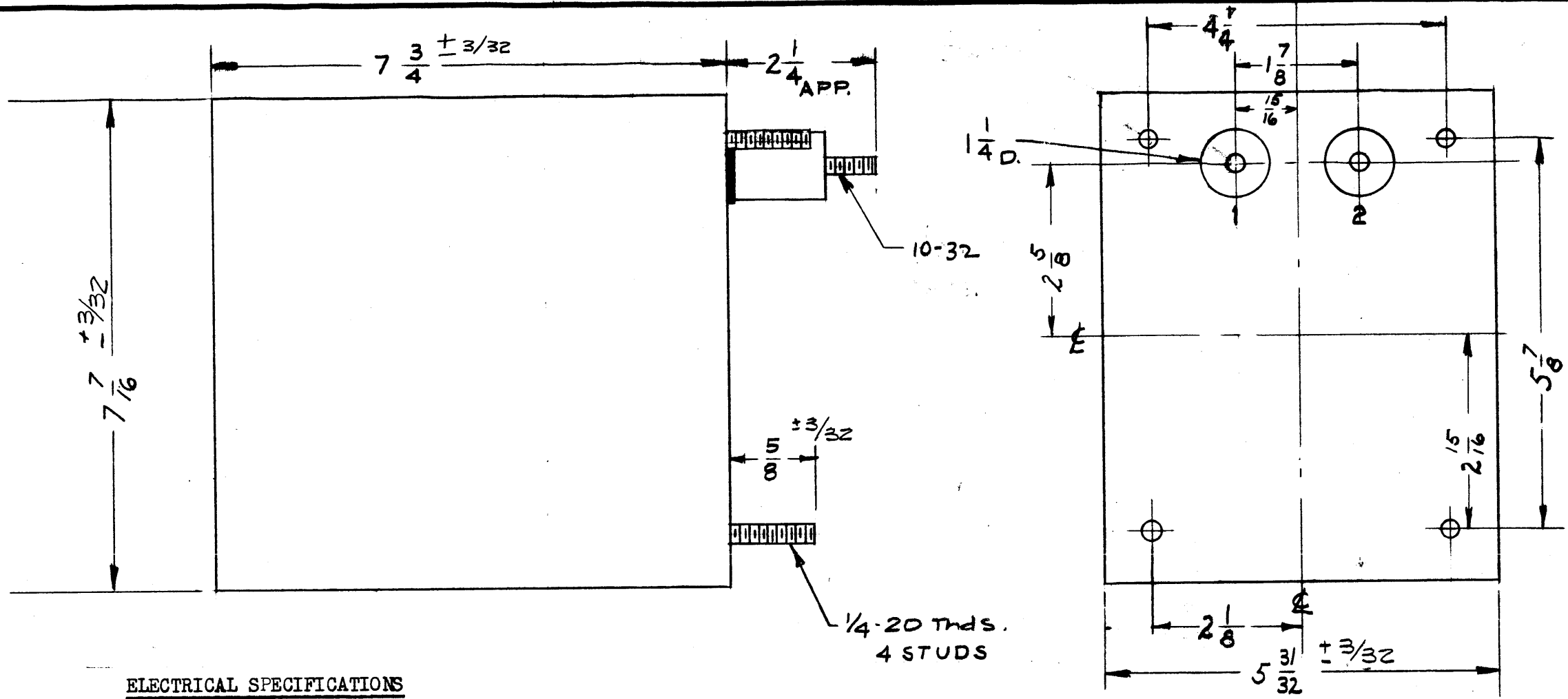
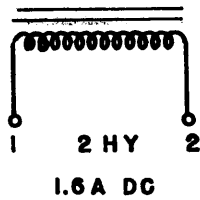


TF-200 D

THE TECHNICAL MATERIEL CORP.
MAMARONECK NEW YORK

TF-200



NOTICE TO PERSONS RECEIVING THIS DRAWING

THE TECHNICAL MATERIEL CORPORATION claims proprietary right in the material disclosed hereon. This drawing is issued in confidence for engineering information only and may not be reproduced or used to manufacture parts shown hereon without permission from THE TECHNICAL MATERIEL CORPORATION to the user. This drawing is loaned for mutual assistance and is subject to recall at any time.

Property of:

THE TECHNICAL MATERIEL CORPORATION
MAMARONECK, NEW YORK

ELECTRICAL SPECIFICATIONS

INDUCTANCE- 2 HENRIES AT FULL CURRENT RATING.
DC CURRENT RATING- 1.6 AMPS
DC RESISTANCE - APPROX. 8 1/2 OHMS.

INSULATION - WINDING TO BE INSULATED FOR 15,000 VRMS

MECHANICAL SPECIFICATIONS

CASE RECTANGULAR, STEEL MIL TYPE YY, HERMETICALLY SEALED.
FINISH TMC SMOOTH GREY ENAMEL (S115), EXCEPT TERMINAL END.
SIZE 5 31/32 x 7 7/16 x 7 3/4 HIGH, EXCLUDING STUDS AND TERMINALS
STAMPING TERMINALS SHALL BE METAL STAMPED 1-2 AS SHOWN.
OPPOSITE END SHALL BE RUBBER STAMPED IN BLACK AS SHOWN

~~REACTOR SHALL BE IN ACC. WITH MIL-STD-207A AND 207B.~~

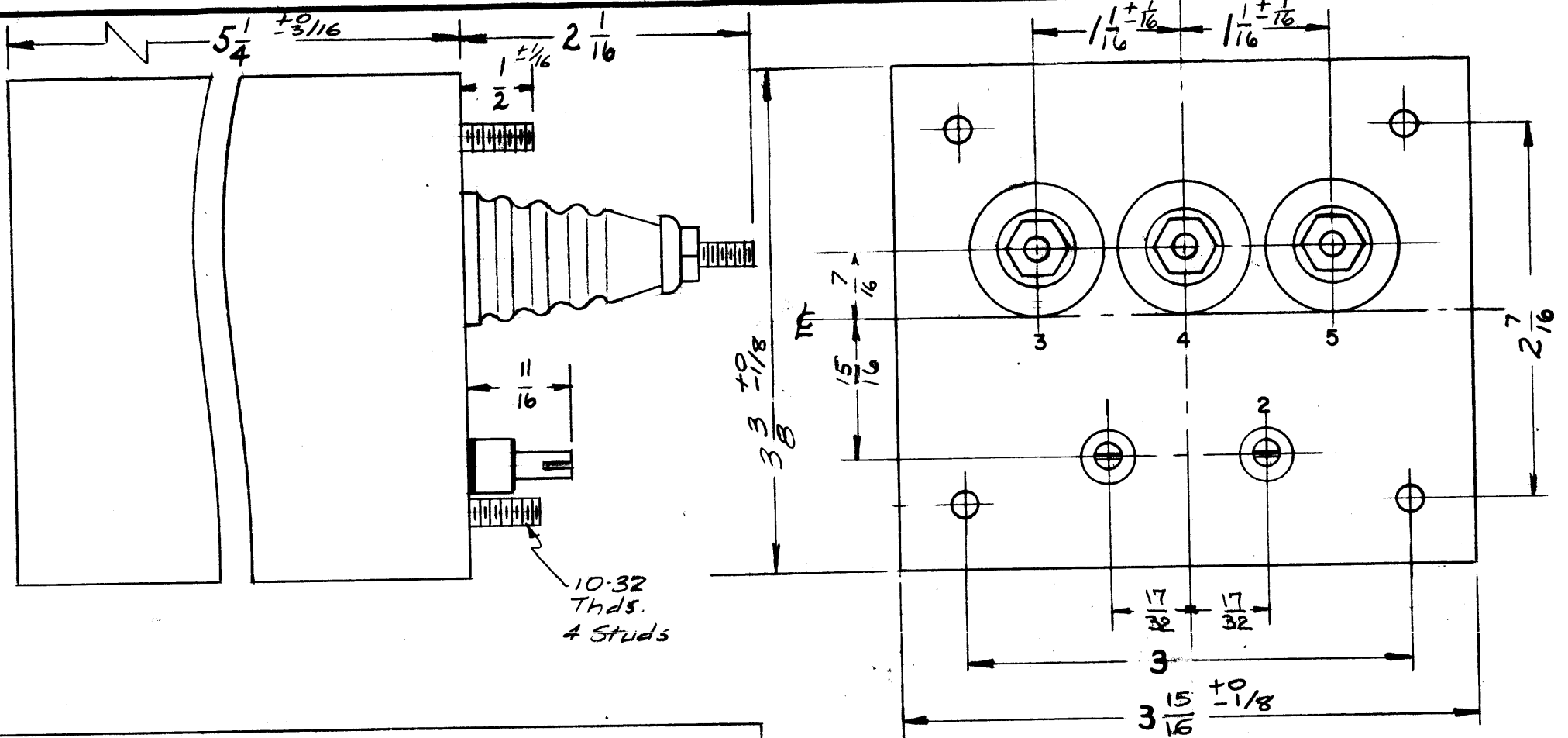
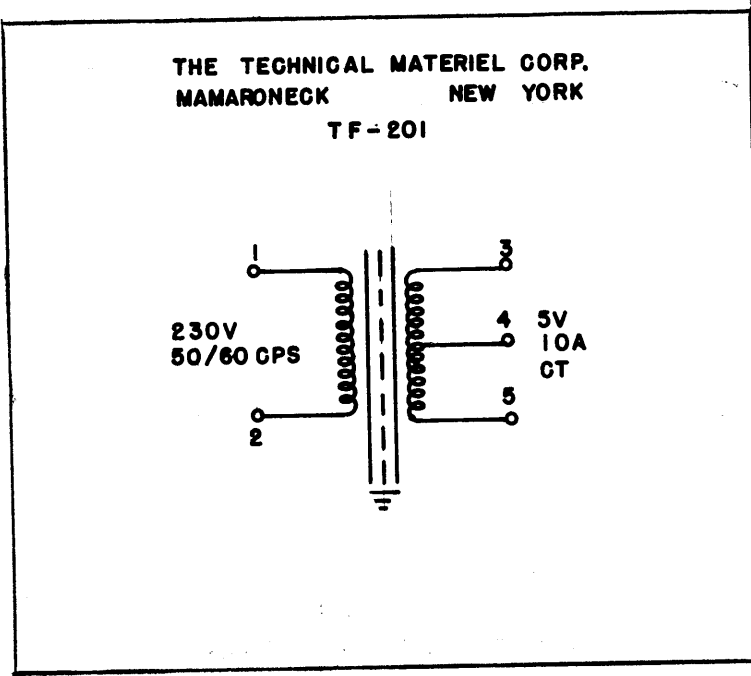
~~GROUP 1 CLASS X FAMILY C1~~

D	1	F 3/32 TOL CLARIFIED DEL. MIL SPEC. NOTE	9-27-63	10101	AK	JWB	JWB
C	1	ADDED TO SPECS., DC RESISTANCE "8 1/2 OHMS"	8-8-63	9738	AK	JWB	JWB
B	1	NOTE ADDED (MIL-T-27A)	6-30-60	2572	AK	JWB	JWB
A	-	10-32 THDS. WERE 1/4-20	11-9-58	-	AK	JWB	JWB
ISSUE	ITEM	CHANGED FROM	DATE	CH. NO.	DRAFTS	CHECKER	ENG. APP.
TOLERANCES			SCALE:		2-1288		
DEC. DIM. ±		MAXIMUM ALLOWABLE TOLERANCES HAVE BEEN DETERMINED AND ANY DEVIATIONS WILL BE CAUSE FOR REJECTION. REMOVE ALL BURRS AND SHARP EDGES					
FAC. DIM. ± 1/64		A					
CULAR DIM. ±							

REQ. PER UNIT	GPT-10000	PR JECT NO.	ASS'Y. NO.	DATE
USED ON				

REQ. ITEM	PART NO.	DESCRIPTION	SYMBOL
THE TECHNICAL MATERIEL CORP. MAMARONECK, NEW YORK			
STOCK SIZE			
REACTOR, 2 HENRY, 1.6A.			
MATERIAL			
TYPE & TEMPER		HEAT TREAT. SPEC.	FINAL APPROVAL
DRAWN		CHECKED	TFG. JWB
FINISH & SPEC. NO.		ELEC. DES. APP.	MECH. DES. APP.
		TFG. JWB	TF-200 D

TF-201 D



ELECTRICAL SPECIFICATION:

PRIMARY: 230V AC, 50/60 CPS, SINGLE PHASE.

SECONDARY: 5V, 10A, CT.

INSULATION - PRIMARY - ~~XXXX~~ - SECONDARY - 15 KV.
POTTING COMPOUND - SAND AND WAX.

MECHANICAL SPECIFICATION:

CASE: RECTANGULAR STEEL MIL TYPE KA, HERMETICALLY SEALED.

FINISH: TMC SMOOTH GREY ENAMEL (S-115), EXCLUDING TERMINAL END.

STAMPING: TERMINALS SHALL BE METAL STAMPED 1 to 5 AS SHOWN.
OPPOSITE END SHALL BE RUBBER STAMPED IN BLACK AS SHOWN.

NOTE: MANUFACTURED IN ACCORDANCE WITH MIL SPEC T-27-A EXCEPT THAT MIL SPEC T-27-A SHALL NOT APPEAR ON CASE AND QUALIFICATION TESTING IS NOT REQUIRED.

ISSUE	ITEM	CHANGED FROM	DATE	CH. NO.	DRAFTS	CHECKER	ENG. APP.
D		ADDED TOL $\pm \frac{1}{16}$ ON $\frac{1}{16}$ (2 PLACES)	2.27.68	18793	HAZ.	WY	EPM
C	1	POTTING COMPOUND ADD. TO SPEC	4.15.65	13889	AL	WY	WY
B	1	NOTE ADDED (MIL T-27A)	6.30.60	2572	WY	JCH	WY
A	-	15KV was 25KV	11/19/58	-	HAZ.	V.G.	WY

TOLERANCES: A

SCALE: 1-1036

DEC. DIM. \pm
FRAC. DIM. \pm
ANGULAR DIM. \pm

MAXIMUM ALLOWABLE TOLERANCES HAVE BEEN DETERMINED AND ANY DEVIATIONS WILL BE CAUSE FOR REJECTION. REMOVE ALL BURRS AND SHARP EDGES

6	GPT-10K	AX-103	11-6-58
REQ. PER UNIT	MODEL	PROJECT NO.	DATE
		ASSY. NO.	
		ON	

REQ. ITEM	PART NO.	DESCRIPTION	SYMBOL
		THE TECHNICAL MATERIEL CORP. MAMARONECK. NEW YORK	
		STOCK SIZE	
		TRANSFORMER, POWER, STEP DOWN FILAMENT (5V)	
		MATERIAL	
		TYPE & TEMPER	
		HEAT TREAT. SPEC.	
		DRAWN	CHECKED
		FINAL APPROVAL	

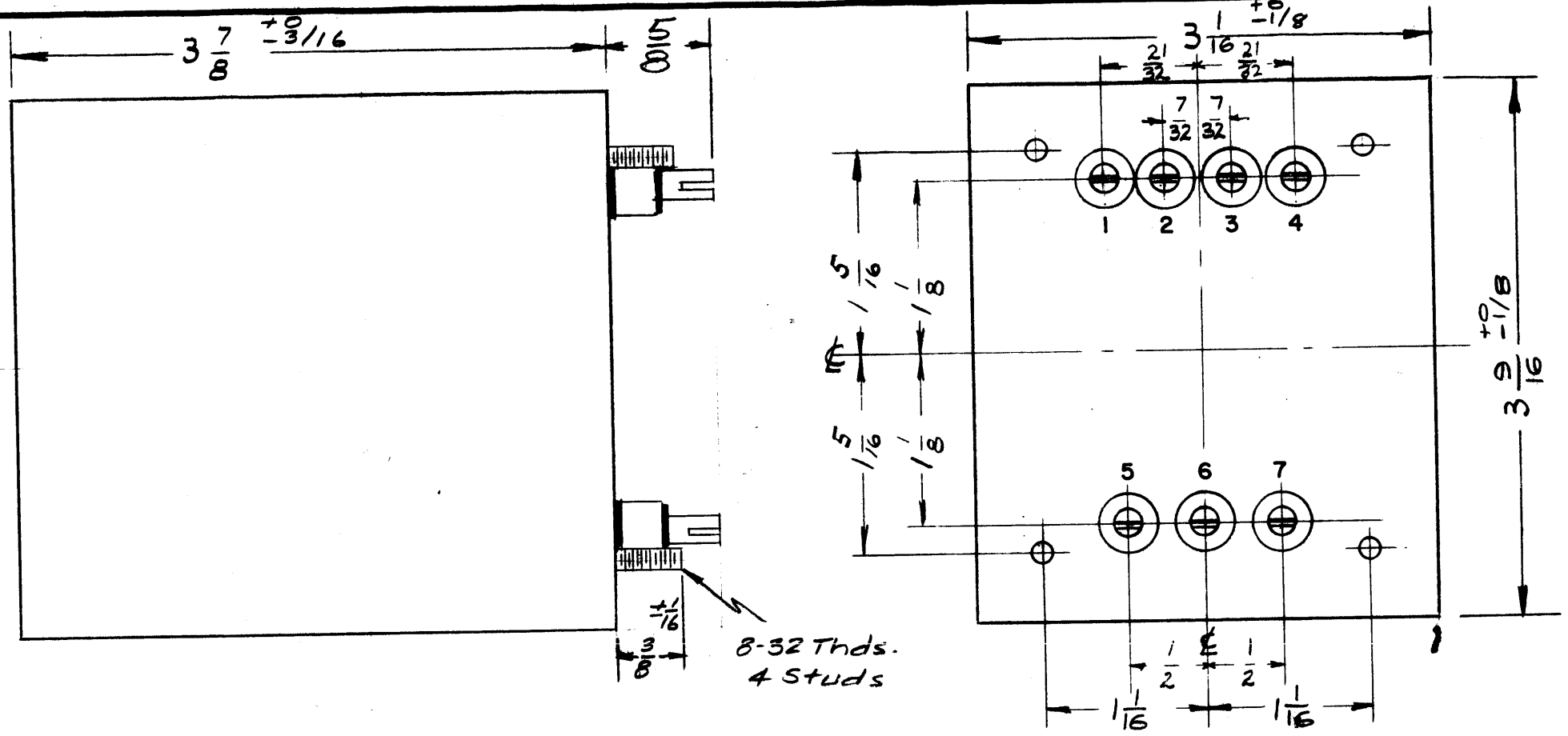
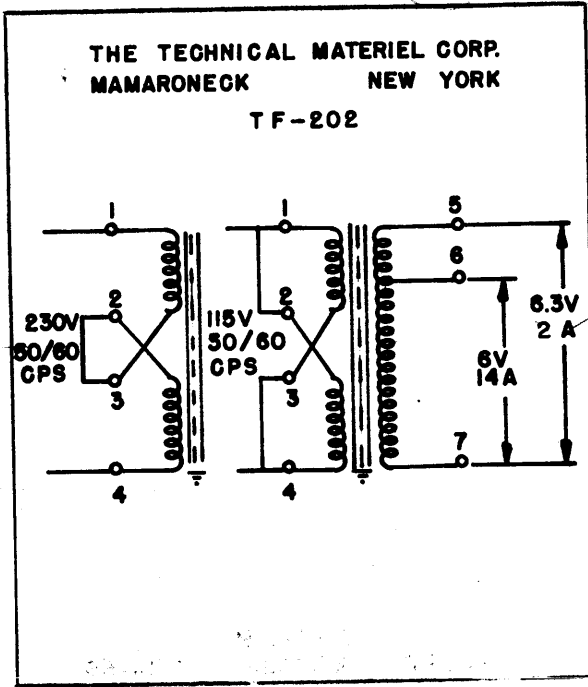
WY 16

WY

WY 20

TF-201

TF-202 C



ELECTRICAL SPECIFICATIONS:

PRIMARY: 115/230 VAC, 50/60 CPS, SINGLE PHASE
 SECONDARY: 6.3V/.2 AMPS AND 6 V/14 AMPS.

MECHANICAL SPECIFICATIONS:

CASE: RECTANGULAR STEEL, MIL TYPE JB, HERMETICALLY SEALED.
 FINISH: TMC SMOOTH GREY ENAMEL (S-115), EXCEPT TERMINAL END.
 STAMPING: TERMINALS SHALL BE METAL STAMPED 1 to 7 AS SHOWN. OPPOSITE END SHALL BE RUBBER STAMPED AS SHOWN.

NOTE: MANUFACTURED IN ACCORDANCE WITH MIL SPEC T-27-A EXCEPT THAT MIL SPEC T-27-A SHALL NOT APPEAR ON CASE AND QUALIFICATION TESTING IS NOT REQUIRED.

~~TRANSFORMER SHALL BE IN ACCORDANCE WITH~~
~~MIL T-27A AND AMENDMENT~~
~~GRADE 1 CLASS A PAPER 01~~
~~MIL SPEC T-27A~~

ISSUE	ITEM	CHANGED FROM	DATE	CH. NO.	DRAFTS	CHECKER	ENG. APP.
C	1	5/8 DIM. WAS 1/16	9/27/63	10102		JOB	ARB
B	1	NOTE ADDED (MIL T-27A)	6-30-60	2572		HAR	KB
A	*	21/32 WAS 5/8	11/12/68			JAG	ARB

TOLERANCES: DEC. DIM. ±, FRAC. DIM. ±, ANGULAR DIM. ±

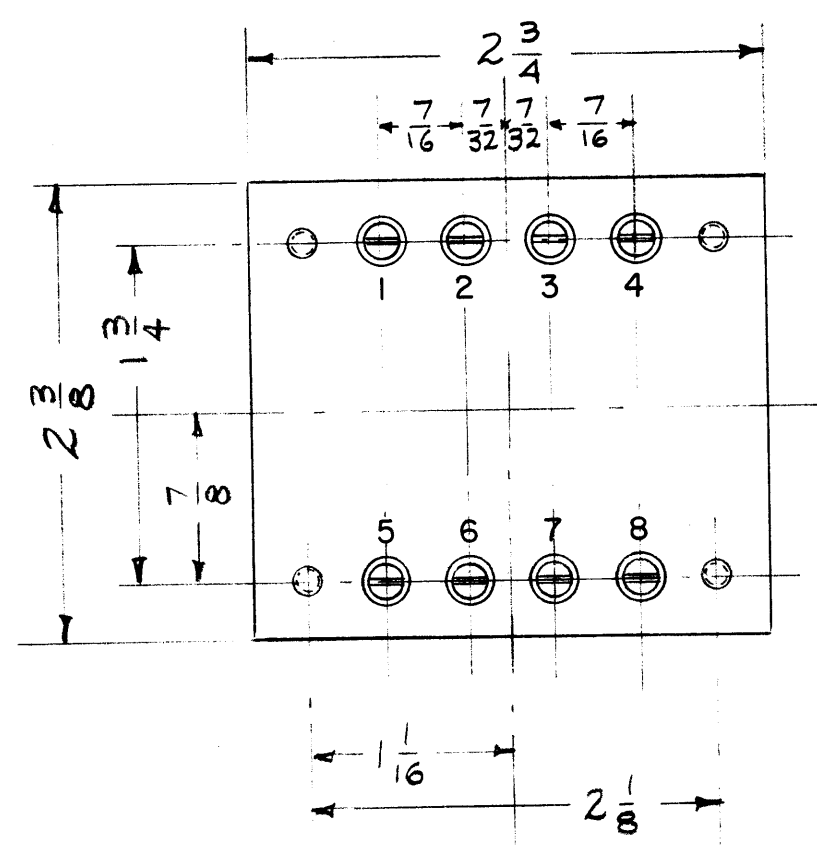
SCALE: 1-1101

MAXIMUM ALLOWABLE TOLERANCES HAVE BEEN DETERMINED AND ANY DEVIATIONS WILL BE CAUSE FOR REJECTION. REMOVE ALL BURRS AND SHARP EDGES

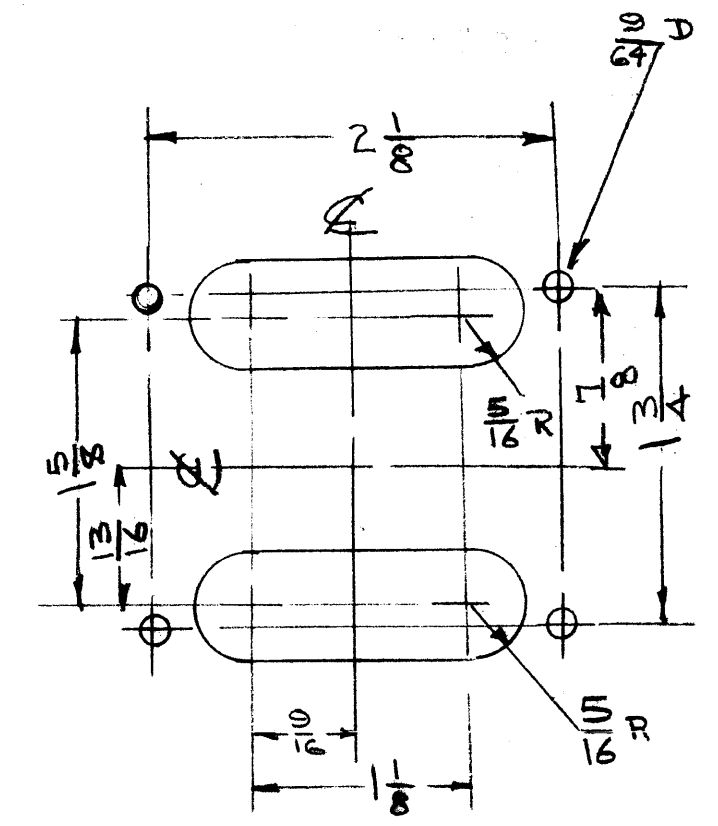
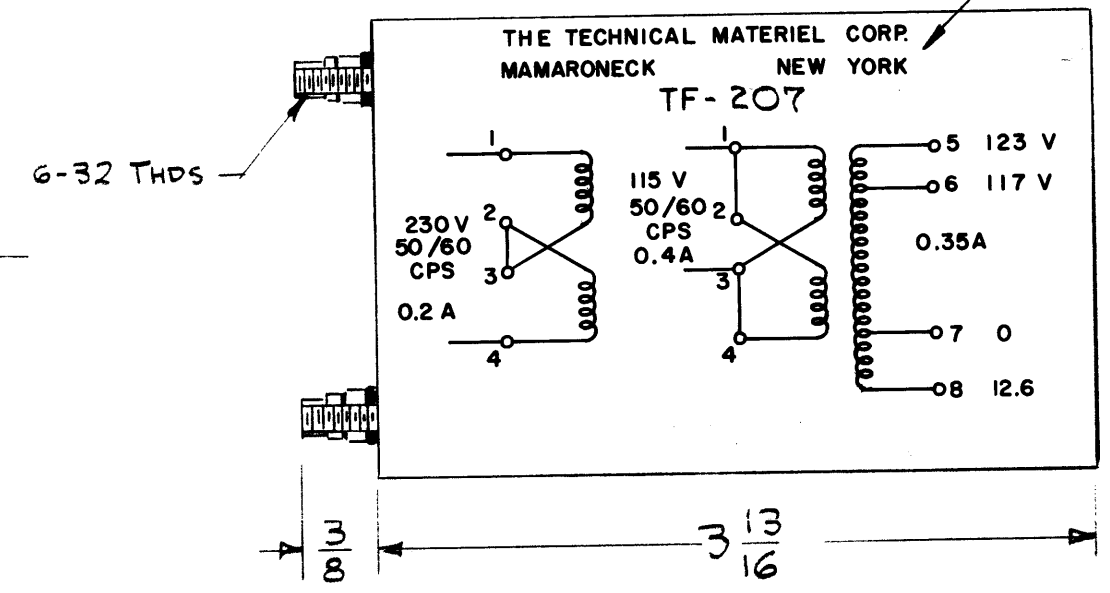
REQ. PER UNIT	GPT-10K	AX-104	1178-58
	MODEL	PROJECT NO.	ASS'Y. NO.
	USED ON		

REQ. ITEM	PART NO.	DESCRIPTION	SYMBOL
		THE TECHNICAL MATERIEL CORP. MAMARONECK. NEW YORK	
		TRANSFORMER, POWER, STEP DOWN, FILAMENT (6.3V)	
		TORILLO 16	ARB
		TF.G. 203	TF-202 - C

TF-207 B.



STAMP CASE AS SHOWN BLACK GOTHIC.



MOUNTING DETAIL

NOTE: MANUFACTURED IN ACCORDANCE WITH MIL SPEC T-27A EXCEPT THAT MIL SPEC T-27A SHALL NOT APPEAR ON CASE AND QUALIFICATION TESTING IS NOT REQUIRED.

ELECTRICAL DATA
 PRIMARY — 115/230 V, 50/60 CPS.
 SECONDARY — 117/123 V, RMS. 40 W @ 117 V, OR 42 W @ 123 V, 12.6 V @ .3 AMP.
 INSULATION — WINDINGS INSULATED FOR 1000 V.
 HEAT RISE — MAX. 40°C RISE.

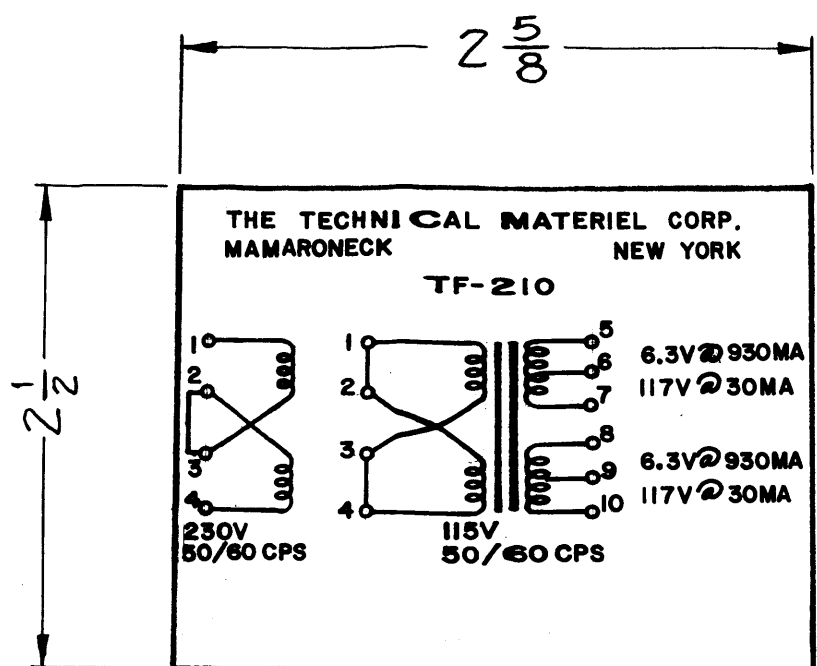
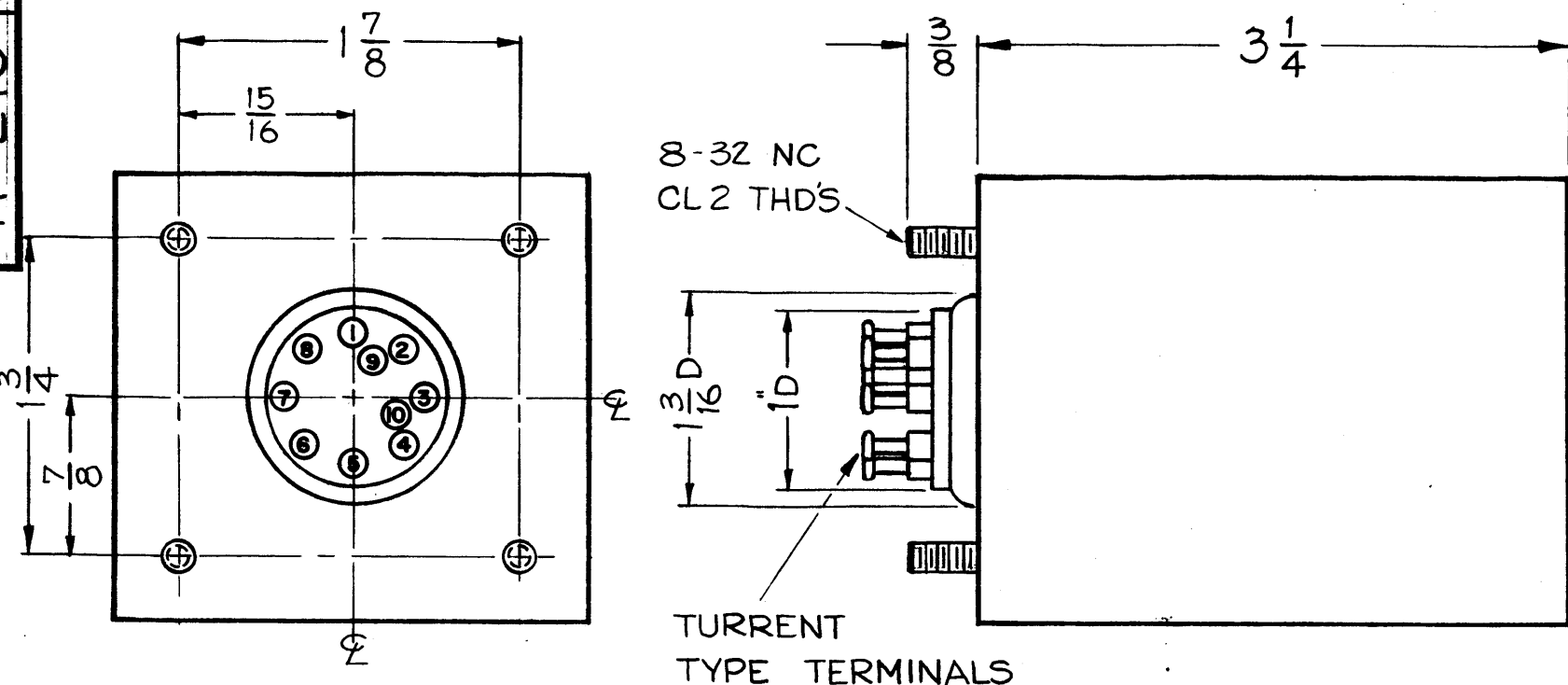
MECHANICAL DATA
 CASE — HERMETICALLY SEALED IN RECTANGULAR STEEL CASE, MIL TYPE GA
 FINISH — SMOOTH GREY ENAMEL (TMC SPEC. S-115)
 TERMINALS — 3/8" LONG O/A. SOLDER LUG TERMINALS AND CERAMIC BUSHINGS

ISSUE	ITEM	CHANGED FR	M	DATE	CH. NO.	DRAFTS	CHECKER	ENG. APP.
B	1	NOTE ADDED (MIL T-27A)		6-30-60	2572			
A	1	ON MTS DETAIL-1-5/8 WAS 3/16 R WAS 3/16		10/14/59	1435			

TOLERANCES: DEC. DIM. ±, FRAC. DIM. ±, ANGULAR DIM. ±. SCALE: A. MAXIMUM ALL WABLE TOLERANCES HAVE BEEN DETERMINED AND ANY DEVIATIONS WILL BE CAUSE FOR REJECTION: REM VE ALL BURRS AND SHARP ED ES.

1	MCU-2	ATS-50(70)		6-11-59
REQ. PER UNIT	MODEL	PROJECT NO.	ASSY. NO.	DATE
USED ON				

REQ.	ITEM	PART NO.	DESCRIPTION	SYMB L
			THE TECHNICAL MATERIEL CORP. MAMARONECK, NEW YORK	
			STOCK SIZE	
			TRANSFORMER, POWER,	
			STEP-UP	
			MATERIAL	
			TYPE & TEMPER	
			HEATTREAT. SPEC.	
			DRAWN	
			CHECKED	
			FINAL APPROVAL	
			FINI H & SPEC. NO.	
			ELEC. DES. APP	
			MECH. DES. APP	



NOTICE TO PERSONS RECEIVING THIS DRAWING

THE TECHNICAL MATERIEL CORPORATION claims proprietary right in the material disclosed hereon. This drawing is issued in confidence and is not to be used or reproduced in any form without permission from THE TECHNICAL MATERIEL CORPORATION to the user. This drawing is issued for mutual assistance and is subject to recall at any time.

Property of:
THE TECHNICAL MATERIEL CORPORATION
MAMARONECK, NEW YORK

NOTE: MANUFACTURED IN ACCORDANCE WITH MIL SPEC T-27A EXCEPT THAT MIL SPEC T-27-A SHALL NOT APPEAR ON CASE AND QUALIFICATION TESTING IS NOT REQUIRED.

ELECTRICAL SPECIFICATIONS ~

PRIMARY ~ 115/230V, 50/60 CPS

SECONDARY ~ 1-WINDING
a- 6.3V @ 900 MA BETWEEN TER. 5 & 6
b- 123.3V @ 30MA " " 5 & 7

2-WINDING
a- 6.3V @ 900 MA BETWEEN TER. 8 & 9
b- 123.3V @ 30MA " " 8 & 10

INSULATION ~ WIRING SHALL BE INSULATED FOR 1500V.

MECHANICAL SPECIFICATIONS ~

CASE ~ MIL TYPE Y HERMETICALLY SEALED, STEEL FINISH ~ TMC SMOOTH GREY ENAMEL (S115), EXCEPT TERMINAL END.

SIZE O/A ~ 2 1/2 X 2 5/8 X 3 1/4 HIGH, EXCLUDING STUDS AND TERMINALS.

STAMPING ~ TERMINALS SHALL BE METAL STAMPED, OPPOSITE END SHALL BE STAMPED AS SHOWN.

ITEM	CHANGED FROM	DATE	CH. NO.	DRAFTS	CHECKER	ENG. APP.
1	NOTE ADDED (MIL T-27A)	6-30-60	2572			

TOLERANCES

SCALE: A

MAXIMUM ALLOWABLE TOLERANCES HAVE BEEN DETERMINED AND ANY DEVIATIONS WILL BE CAUSE FOR REJECTION. REMOVE ALL BURRS AND SHARP EDGES

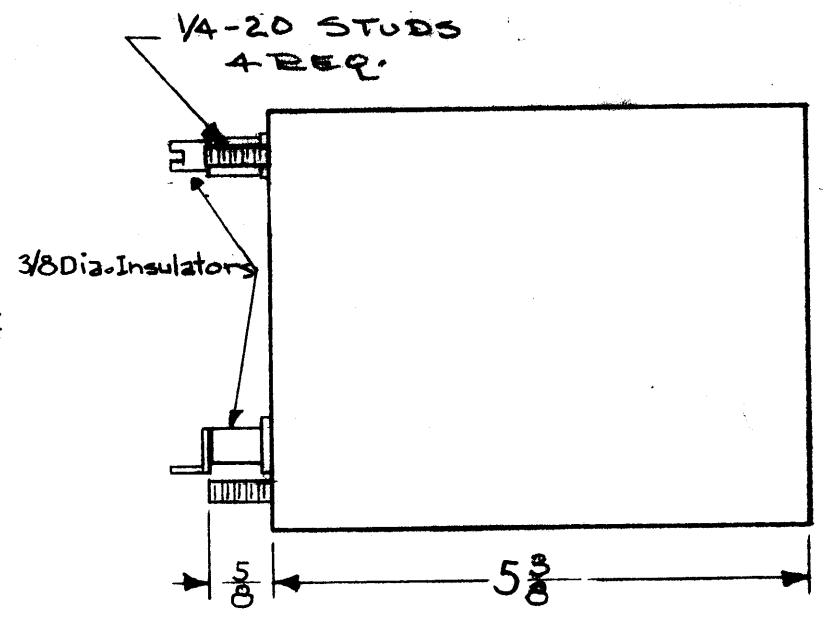
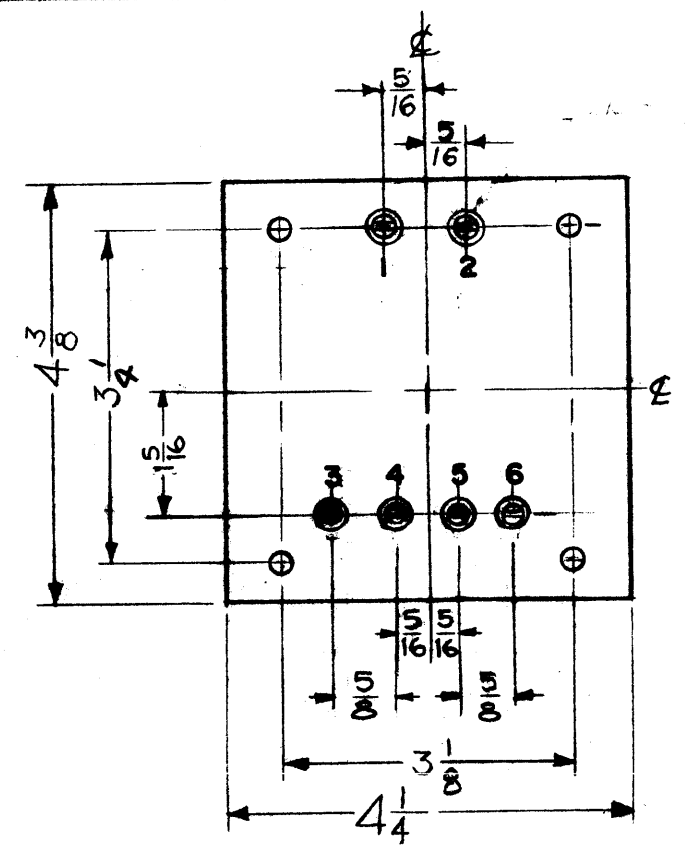
REQ. PER UNIT	ISK	PROJECT NO.	ASS'Y. NO.	DATE
				10-21-59

USED ON

REQ. ITEM	PART NO.	DESCRIPTION	SYMBOL
		THE TECHNICAL MATERIEL CORP. MAMARONECK, NEW YORK	
		STOCK SIZE	
		MATERIAL	
		J.C. Biele	
		TYPE & TEMPERATURE	
		HEAT TREAT. SPEC.	
		DRAWN	
		CHECKED	
		FINAL APPROVAL	
		FINISH & SPEC. NO.	
		ELEC. DES. APP.	
		MECH. DES. APP.	

TF-210 A

TF-214 B

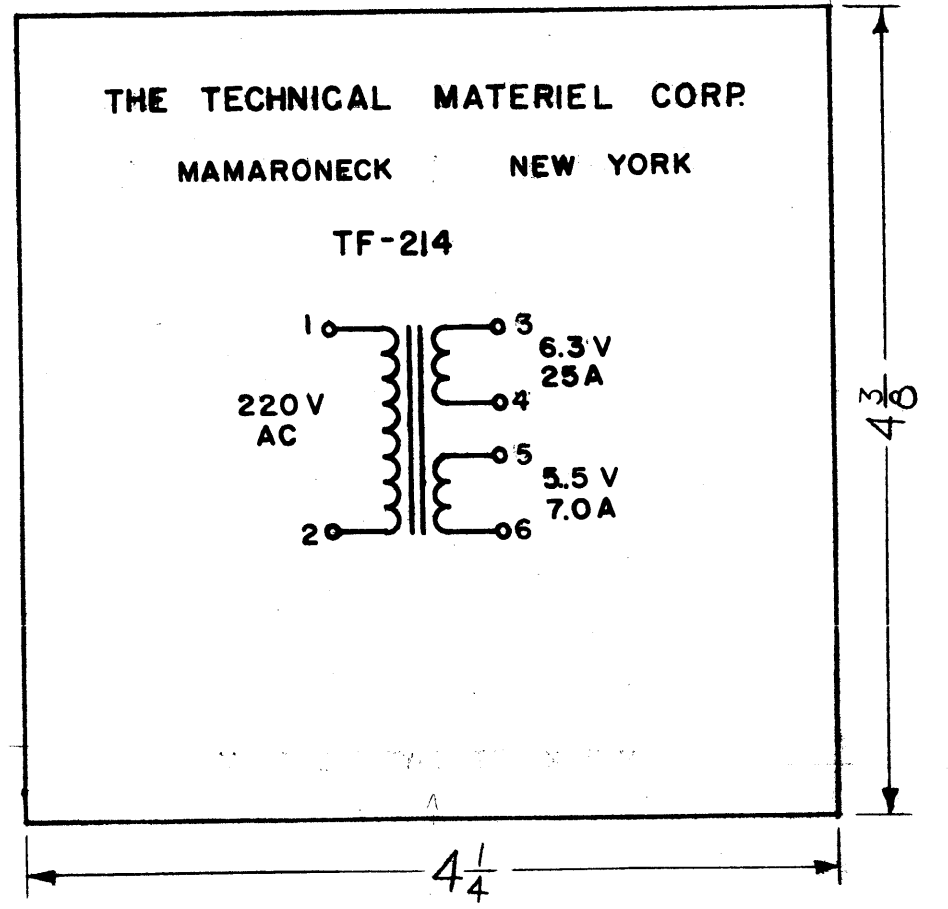


ELECTRICAL SPECIFICATIONS
 PRIMARY - 220 V AC
 SECONDARY - 6.3 V AT 25 AMPS
 5.5 V AT 7 AMPS
 WORKING VOLTAGE - 2500
 TEST VOLTAGE - 5000

MECHANICAL SPECIFICATIONS
 CASE - RECTANGULAR, STEEL, MIL. TYPE YY,
 HERMETICALLY SEALED
 FINISH - TMC SMOOTH GRAY ENAMEL (S-115)
 EXCEPT TERMINAL END
 SIZE -
 STAMPING - TERMINALS SHALL BE METAL STAMPED,
 OPPOSITE END SHALL BE STAMPED IN
 BLACK GOTHIC (SEE STAMPING DETAIL)

NOTE: MANUFACTURED IN ACCORDANCE WITH MIL SPEC T-27-A EXCEPT THAT MIL SPEC T-27-A SHALL NOT APPEAR ON CASE AND QUALIFICATION TESTING IS NOT REQUIRED.

MODEL: SPT-40K FUNCTION: FILAMENT TRANSFORMER, CROW BAR



STAMPING DETAIL
 LETTERING BLACK GOTHIC

ISSUE	ITEM	CHANGED FROM	DATE	CH. NO.	DRAFTS	CHECKER	ENG. APP.
B		TEMP. 8.4.5.06	2.3.67	17770	WFO	WFO	WFO
A	1	NOTE ADDED (MIL T-27A)	6.30.60	2572	WFO	WFO	WFO

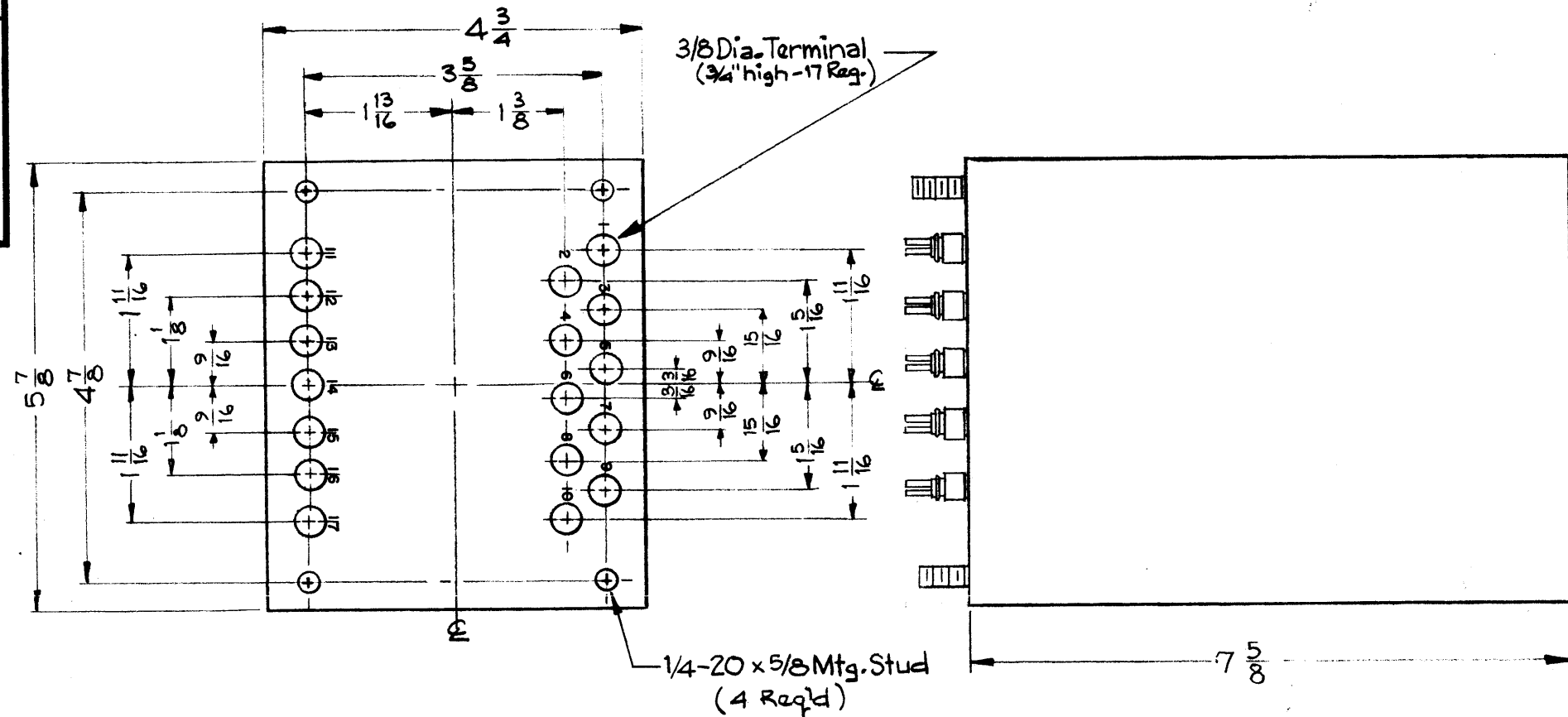
TOLERANCE: A
 DEC. DIM. ±
 FRAC. DIM. ±
 ANGULAR DIM. ±

MAXIMUM ALLOWABLE TOLERANCES HAVE BEEN DETERMINED AND ANY DEVIATIONS WILL BE CAUSE FOR REJECTION. REMOVE ALL BURRS AND SHARP EDGES

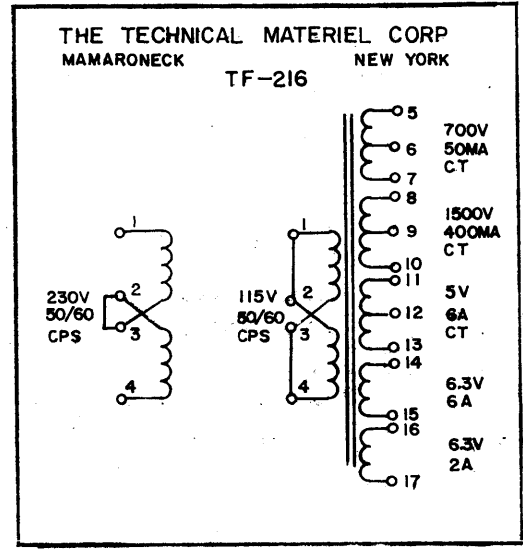
REQ. PER UNIT	1	MODEL	SPT-40K	PROJECT NO.		ASBY. NO.		DATE	12-22-60
---------------	---	-------	---------	-------------	--	-----------	--	------	----------

REQ.	ITEM	PART NO.	DESCRIPTION	SYMBOL
			THE TECHNICAL MATERIEL CORP. MAMARONECK, NEW YORK	
			TRANSFORMER, POWER	
			DISTRIBUTION (STEP-DOWN)	
			TF-214	B

TF-216 B



MODEL	FUNCTION
GPT-40K	POWER TRANSFORMER BIAS SUPPLY



NOTE: MANUFACTURED IN ACCORDANCE WITH MIL SPEC T-27-A EXCEPT THAT MIL SPEC T-27-A SHALL NOT APPEAR ON CASE AND QUALIFICATION TESTING IS NOT REQUIRED.

— ELECTRICAL SPECIFICATIONS —

PRIMARY: 230V.
 SECONDARY: 700V. C.T. at 50 MA,
 1500V. C.T. at 400MA
 5V. at 6 Amps
 6.3V. at 6 Amps
 6.3V at 2Amps
 A. 1500 V. C.T., Winding for Choke
 input 750 V.DC 400 MA
 B. 700 V. C.T.; Winding for Condenser
 input 400 VDC 50MA
 INSULATION: 3KV. Test ; 2.5 KV. Working.

— MECHANICAL SPECIFICATIONS —

CASE: Rectangular, Steel, MIL Type YY, hermetically Sealed.
 FINISH: TMC Smooth Gray, Enamel (TMC-S-115) Except terminal end.
 Size: 4 3/4 x 5 7/8 x 7 5/8 high, Excluding Studs & Terminals
 Stamping: Terminals Shall be Metal Stamped 1-2-3-4-5-6-7-8-9-10-11-12-13-14-15-16-17. Opposite end shall be stamped in Black as per Stamping Detail.

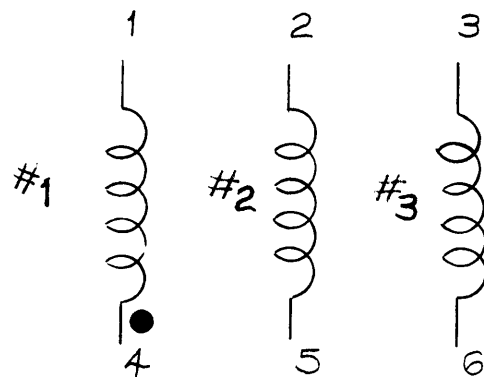
ISSUE	ITEM	CHANGED FROM	DATE	CH. N.	DRAFTS	CHECKER	ENG. APP.
B	1	SPEC 'A' WAS 750V.C.T. 750V.	3-7-63	8396	RC	JM	JLB
	2	SPEC 'B' WAS 350V.C.T. 350V.					
A	1	NOTE ADDED (MIL T-27A)	6-30-60	2572	JFB	JCB	LB
TOLERANCES			SCALE: 1/2				
DEC. DIM. ±		MAXIMUM ALL WABLE TOLERANCES HAVE BEEN DETERMINED AND ANY DEVIATIONS WILL BE CAUSE FOR REJECTION. REMOVE ALL BURRS AND SHARP EDGE					
FRAC. DIM. ±							
AN ULAR DIM. ±							

REQ. PER UNIT	MODEL	PROJECT NO.	AS Y. NO.	DATE
	GPT-40K			12-23-59
USED ON				

REQ. ITEM	PART NO.	DESCRIPTION	SYMBOL
STOCK SIZE		THE TECHNICAL MATERIEL CORP. MAMARONECK, NEW YORK	
MATERIAL		TRANSFORMER, POWER, STEP-DOWN & STEP-UP	
TYPE & TEMPER.		HEAT TREAT. SPEC.	FINAL APPROVAL
FINISH & SPEC. NO.		DRAWN	TF-216 B

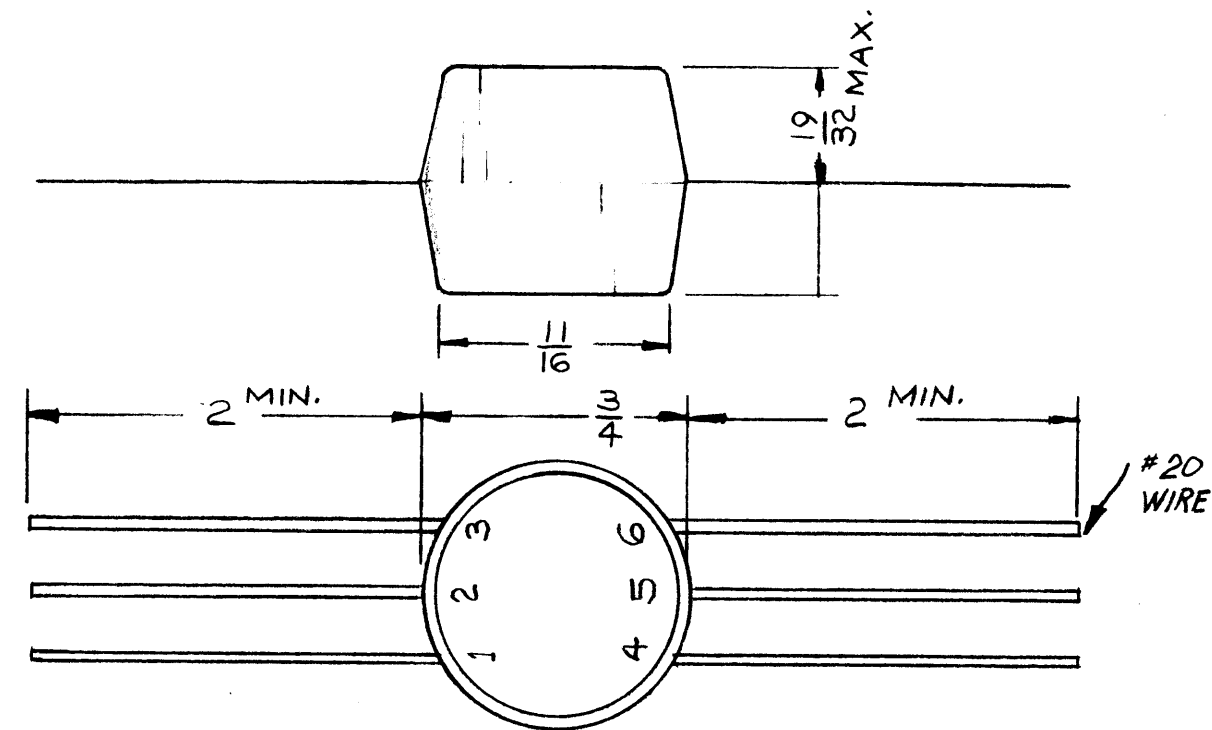
CHART A	
PRIMARY INDUCTANCE WINDING #1	
CODE	INDUCTANCE $\pm 20\%$
B	10 MH
G	22.0 MH
K	4.7 MH
O	1.0 MH
Q	0.47 MH
U	0.1 MH

CHART B	
TURNS RATIO	
CODE	RATIO $\pm 3\%$
1	1:1:1
3	3:1:1
5	5:1:1
13	3:3:1
15	5:5:1

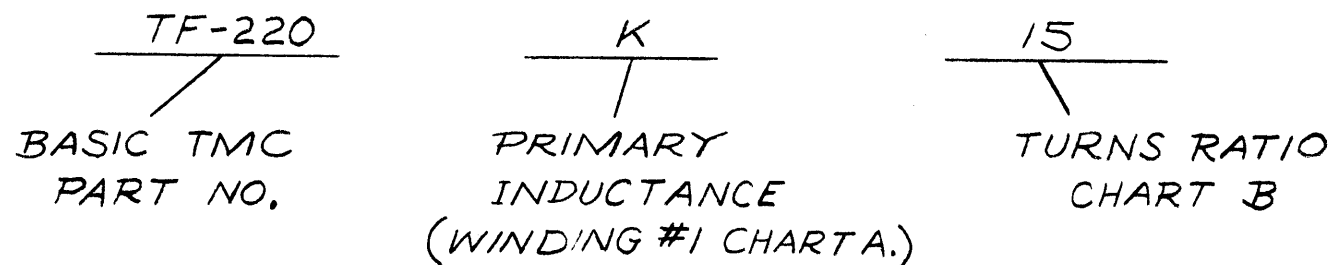


SCHEMATIC DIAGRAM

● INDICATES SWING SAME POLARITY



NOMENCLATURE SHALL BE IN THE FOLLOWING FORM:



SPECIFICATIONS

UNIT MEETS GRADE 5, CLASS R OF MIL-T-27A (EXCEPT FLAMMABILITY).
 PULSE DURATION ~ 0.05 TO 25 μ SEC.
 PULSE REPETITION RATE ~ UP TO 10MC.
 WEIGHT ~ 1/3 OUNCE
 VOLTAGE RATING BETWEEN WINDING ~ 500 VOLTS RMS.
 CASE ~ EPOXY RESIN

PURCHASING NOTE:
 MANUFACTURERS # AS FOLLOWS:

$\frac{K}{|}$ $\frac{15}{/}$ $\frac{WA}{/}$
 PRIMARY INDUCTANCE TURNS RATIO SUFFIX ("WA" FOR TYPE G, B, K. "QA" FOR TYPE O, Q, U.)
STAMP MFG PART # ON EACH UNIT

FORGOTTEN TO PERSONS RECEIVING THIS DRAWING

THE TECHNICAL MATERIEL CORPORATION claims proprietary right in the material disclosed hereon. This drawing is issued in confidence for engineering information only and may not be reproduced or used to manufacture anything shown hereon without permission from THE TECHNICAL MATERIEL CORPORATION to the user. This drawing is loaned for mutual assistance and is subject to recall at any time.

Property of:
 THE TECHNICAL MATERIEL CORPORATION
 MAMARONECK, NEW YORK

REQ. ITEM	PART NO.	DESCRIPTION	SYMBOL
STOCK SIZE		THE TECHNICAL MATERIEL CORP. MAMARONECK, NEW YORK	
MATERIAL		TRANSFORMER, PULSE	
TYPE & TEMPER	HEAT TREAT. SPEC.	DRAWN	CHECKED
FINISH & SPEC. NO.		ELEC. DES. APP. MECH. DES. APP.	

ISSUE	ITEM	CHANGED FROM	DATE	CH. NO.	DRAFTS	CHECKER	ENG. APP.
B	7	PURSE ENERGY DELETED	10-4-60	2995	RV220	[Signature]	[Signature]
	6	ADDED EXCEPT FLAMMABILITY					
	5	MFG. PART NO. NOTE ADDED					
	4	#20 WIRE ADDED TO TRANS					
	3	FRAC DIM. 1/32 WAS 1/64.					
	2	ON CHART B $\pm 3\%$ WAS ADDED					
	1	ON CHART A $\pm 20\%$ WAS ADDED					
A	1	REDRAWN & REVISED	9-19-60			[Signature]	[Signature]

TOLERANCES: DEC. DIM. $\pm 1/32$, FRAC. DIM. $\pm 1/32$, ANGULAR DIM. \pm

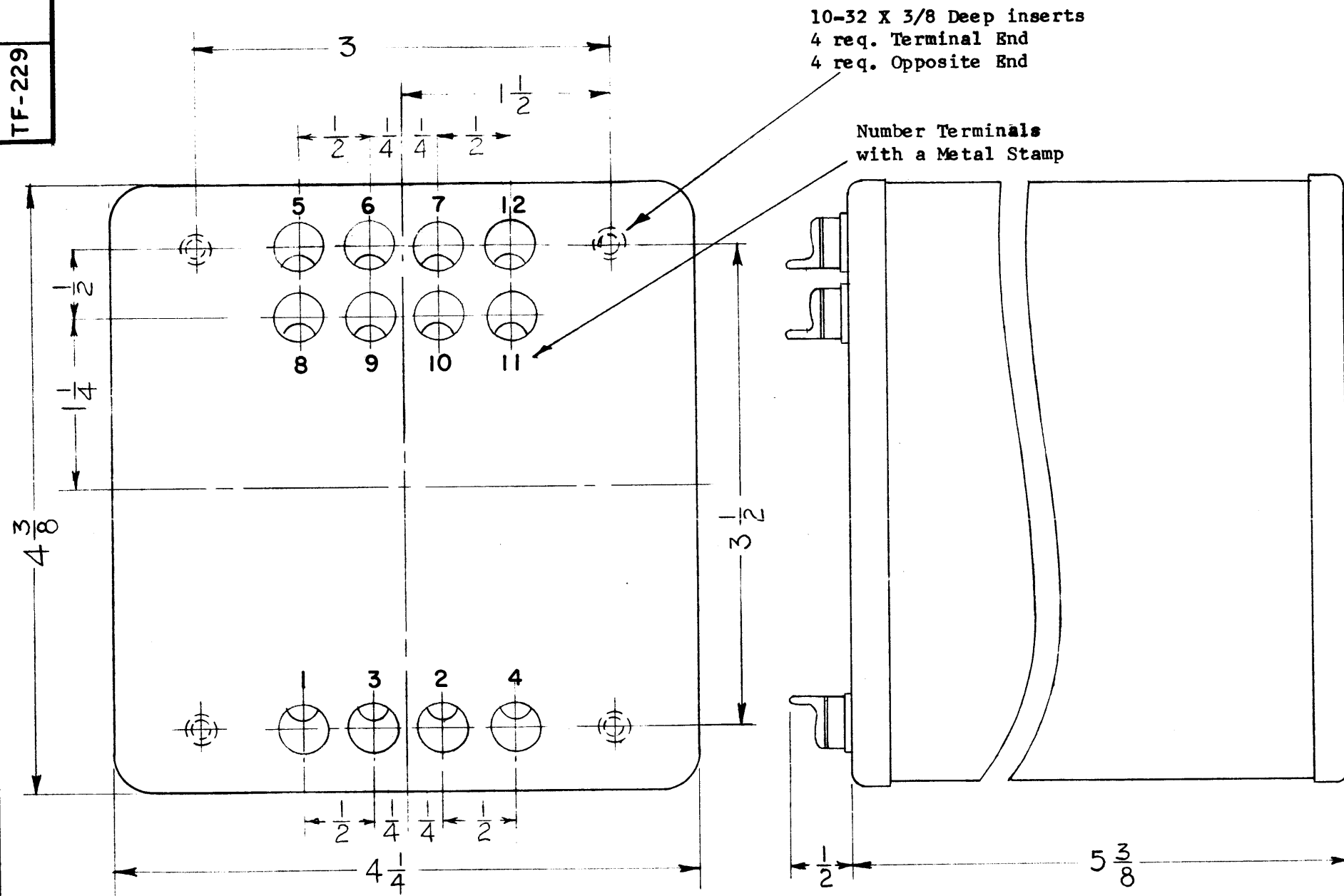
SCALE: S401-94

MAXIMUM ALLOWABLE TOLERANCES HAVE BEEN DETERMINED AND ANY DEVIATIONS WILL BE CAUSE FOR REJECTION. REMOVE ALL BURRS AND SHARP EDGES

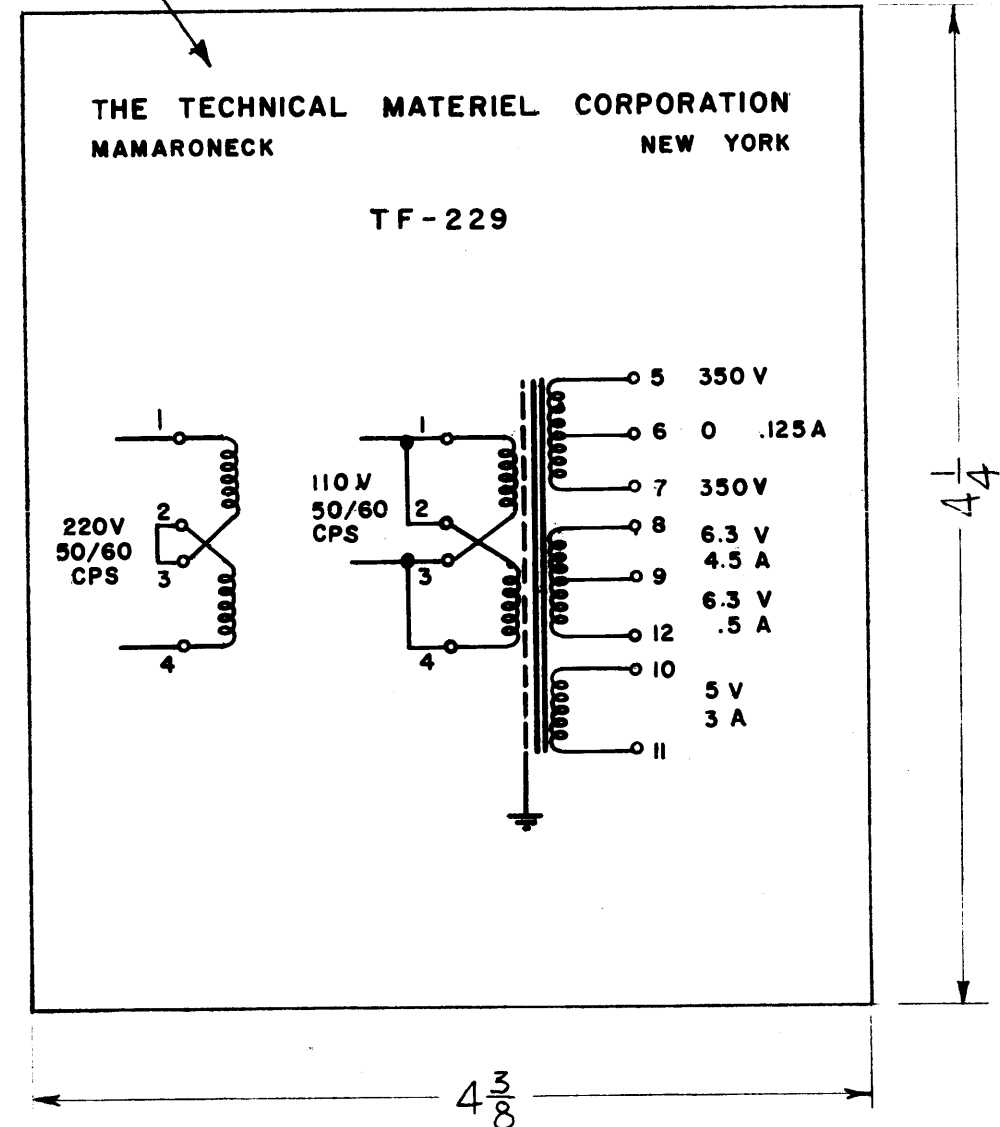
REQ. PER UNIT	MODEL	PROJECT NO.	ASS'Y. NO.	DATE

USED ON

TF-229



Nomenclature, Schematic To Be Stamped On Case End Opposite Terminals.



TRANSFORMER, POWER: FILAMENT & PLATE. INPUT: 110-220 V, 50-60 CYCLE A.C. SINGLE PHASE. SECONDARY TERMINALS & RATINGS ARE THOSE SHOWN IN STAMPING DIAGRAM. HERMETICALLY SEALED IN RECTANGULAR METAL CASE. 12 SOLDER LUG TERMINALS, (8) 10-32 X 3/8 LONG THREADED INSERTS.

NOTE: MANUFACTURED IN ACCORDANCE WITH MIL SPEC T-27-A EXCEPT THAT MIL SPEC T-27-A SHALL NOT APPEAR ON CASE AND QUALIFICATION TESTING IS NOT REQUIRED.

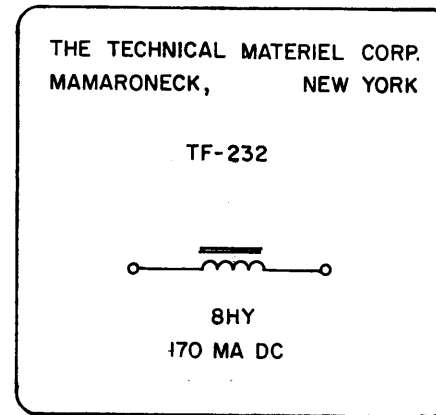
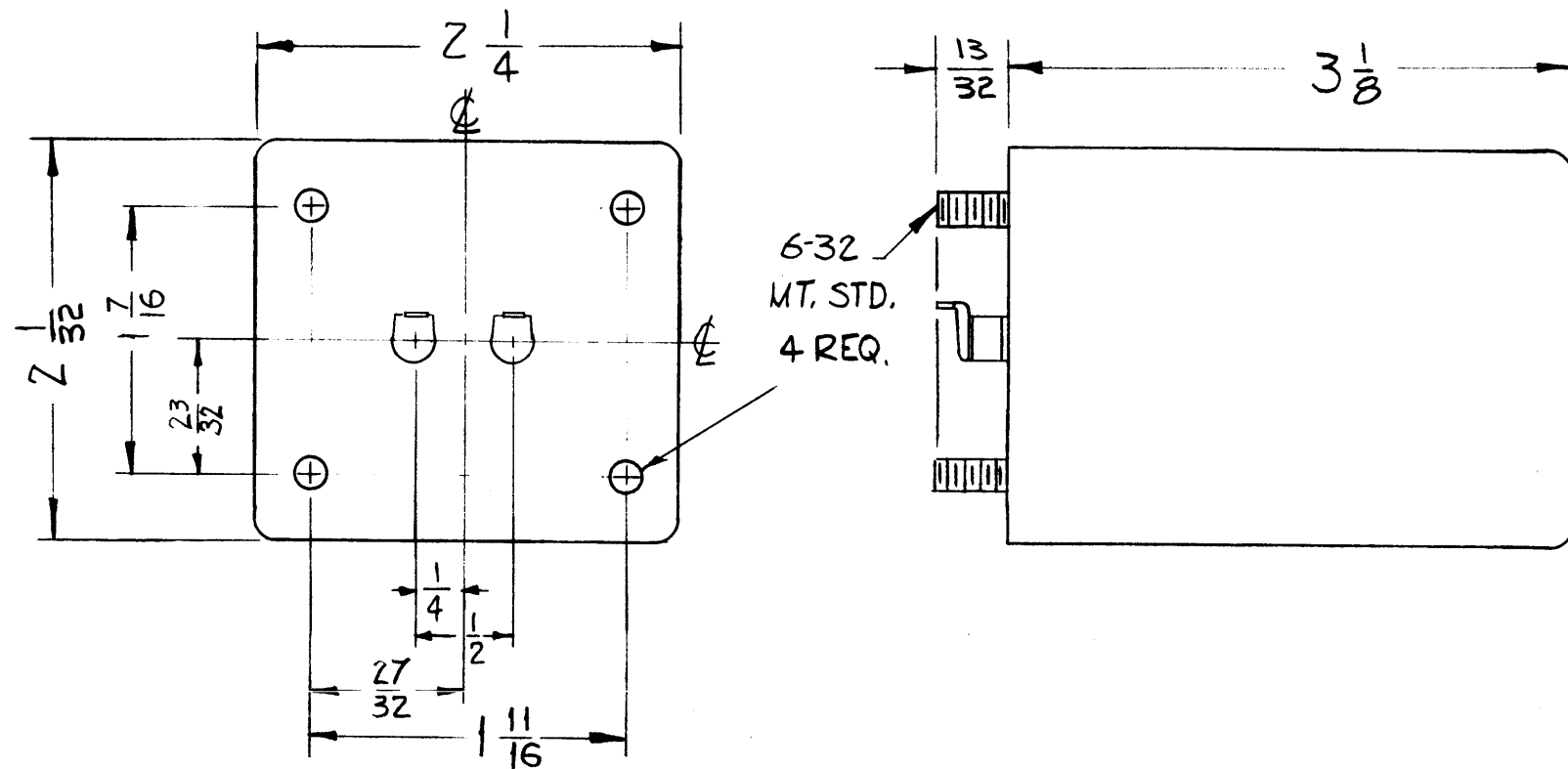
ELECTROSTATIC SHIELD IS TO BE INSERTED BETWEEN PRIMARY & SECONDARY.

SYM	DESCRIPTION	DATE	CH. NO.	DRAFTS	CHECKER	ENG. APP.
UNLESS OTHERWISE SPECIFIED:						
DIMENSIONS ARE IN INCHES		SCALE: A				
TOLERANCES ON FRACTIONS ± 1/64		MAXIMUM ALLOWABLE TOLERANCES HAVE BEEN DETERMINED AND ANY DEVIATIONS WILL BE CAUSE FOR REJECTION. REMOVE ALL BURRS AND SHARP EDGES				
DECIMALS ± .005						
ANGLES ± 1/2°						

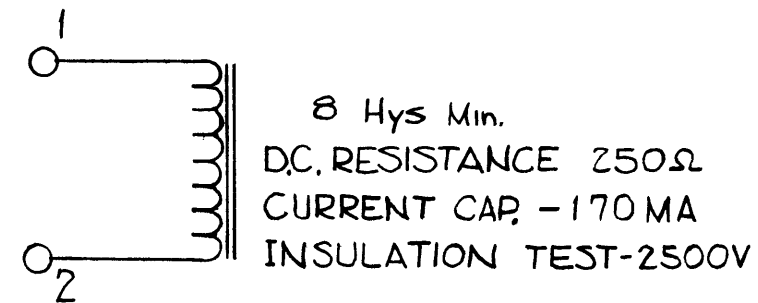
REQ. PER UNIT	MODEL	SECTION	ASS'Y. NO.	DATE
	VOX-5			1-4-61
USED ON				

REQ.	ITEM	PART NO.	DESCRIPTION	SYMBOL
THE TECHNICAL MATERIEL CORP. MAMARONECK, NEW YORK				
STOCK SIZE				
TRANSFORMER, POWER				
VOX-5				
MATERIAL				
TYPE & TEMPER		HEAT TREAT. SPEC.	DRAWN	CHECKER
			<i>[Signature]</i>	<i>[Signature]</i>
FINISH & SPEC. NO.		ELEC. DES. APP.	MECH. DES. APP.	FINAL APPROVAL
				TF-229

TF-232 B



STAMP TOP AS SHOWN
LETTERING 1/8 HIGH.



NOTE; MANUFACTURED IN ACCORDANCE WITH MIL. SPEC. T-27-A, EXCEPT THAT MIL. SPEC. T-27-A SHALL NOT APPEAR ON CASE AND QUALIFICATION TESTING IS NOT REQ.

NOTICE TO USER RECEIVING THIS DRAWING

THE TECHNICAL MATERIEL CORPORATION claims property rights in the material disclosed herein. This drawing is made available for an authorized information only and may not be reproduced or used to manufacture anything shown hereon without permission from THE TECHNICAL MATERIEL CORPORATION to the user. This drawing is loaned for mutual assistance and is subject to recall at any time.

Property of:

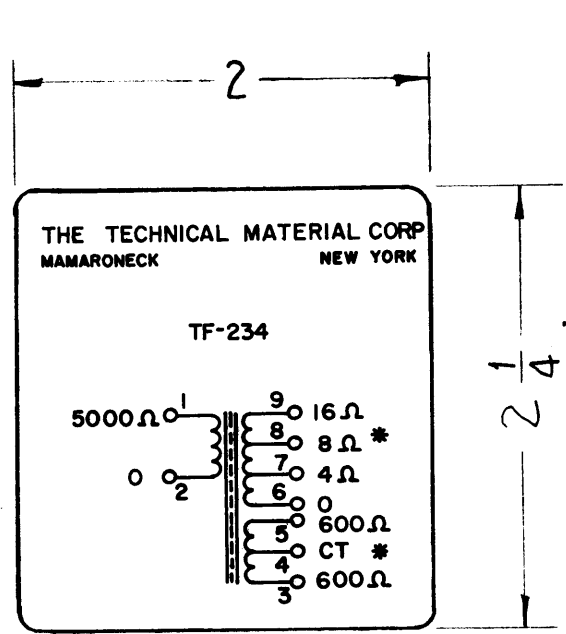
THE TECHNICAL MATERIEL CORPORATION
MAMARONECK, NEW YORK

SYM	DESCRIPTION	DATE	CH. NO.	DRAFTS	CHECKER	ENG. APP.
B	13/32 WAS 3/8 2-1/32 WAS 2-1/8, 3-1/8 WAS 3	7-9-63	9479			
A	CURRENT CAP. WAS 150 MA; STAMPING ADDED	12-18-62	7883			

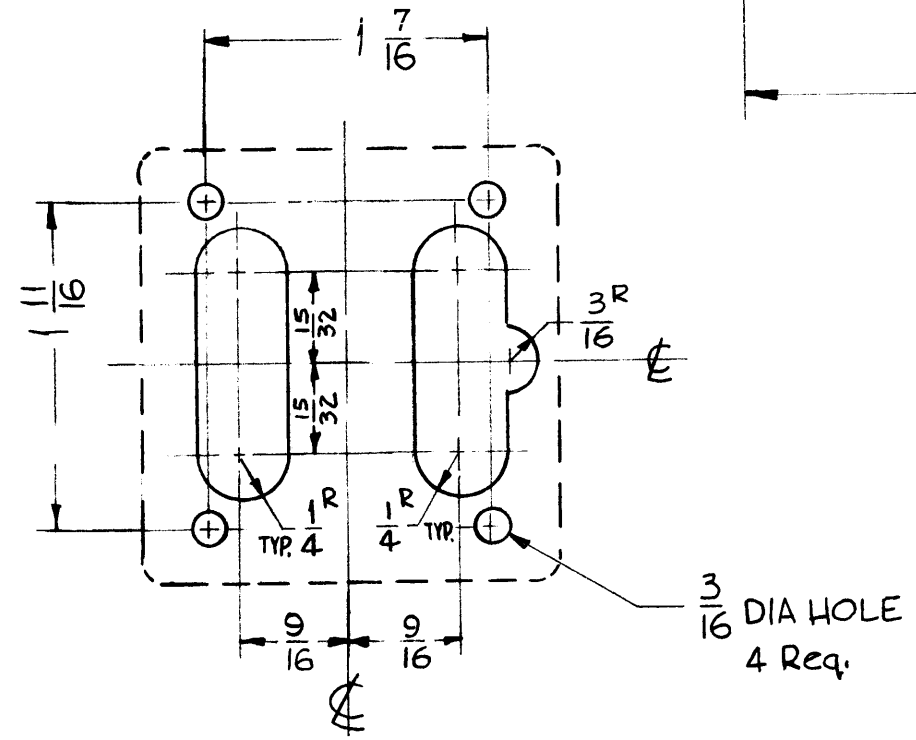
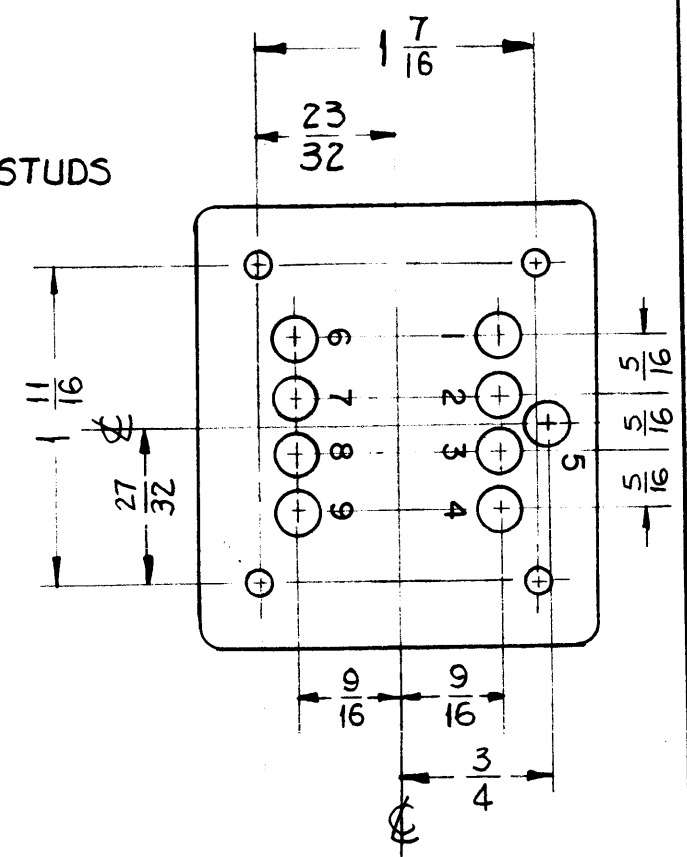
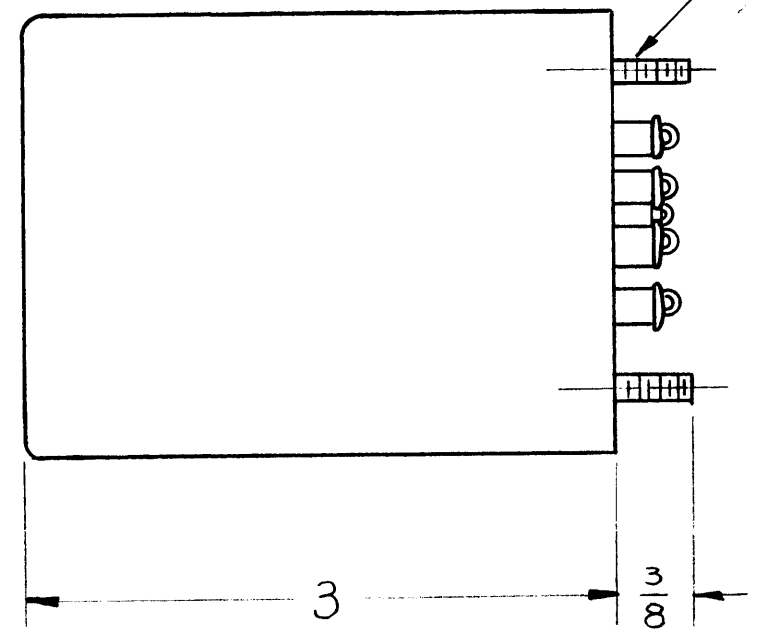
UNLESS OTHERWISE SPECIFIED:		SCALE:	
DIMENSIONS ARE IN INCHES		MAXIMUM ALLOWABLE TOLERANCES HAVE BEEN DETERMINED AND ANY DEVIATIONS WILL BE CAUSE FOR REJECTION.	
TOLERANCES ON FRACTIONS ± 1/64 DECIMALS ± .005 ANGLES ± 1/2°		REMOVE ALL BURRS AND SHARP EDGES	
A		1	GPR-92
		1	GPE-1
REQ. PER UNIT	MODEL	SECTION	ASS'Y. NO.
			DATE
USED ON			

REQ. ITEM	PART NO.	DESCRIPTION	SYMBOL
THE TECHNICAL MATERIEL CORP. MAMARONECK, NEW YORK			
STOCK SIZE			
FILTER CHOKE			
MATERIAL			
		R. H. ZZO	
TYPE & TEMPER	HEAT TREAT. SPEC.	DRAWN	CHECKER
SI15 T.M.C. GRAY			
FINISH & SPEC. NO.		ELEC. DES. APP.	MECH. DES. APP.
		TF-232 B	

TF-234



*PRI-IMP 5000Ω WITH BOTH SEC. LOADED



DRILLING PLAN

ELECTRICAL SPECIFICATIONS

MAX PRI CURRENT 50 MA
MAX POWER OUTPUT 3 WATTS
HIGH POT at 60 CPS 1500 volts

MECHANICAL SPECIFICATION

CASE- Hermetically sealed in rectangular sealed case.
FINISH- S115 smooth grey enamel.
STAMPING- Black lettering(S detail)
NOTE: manufactured in accordance with MIL spec T-27-A except that MIL spec T-27-A shall not appear on case and qualification testing is not required.

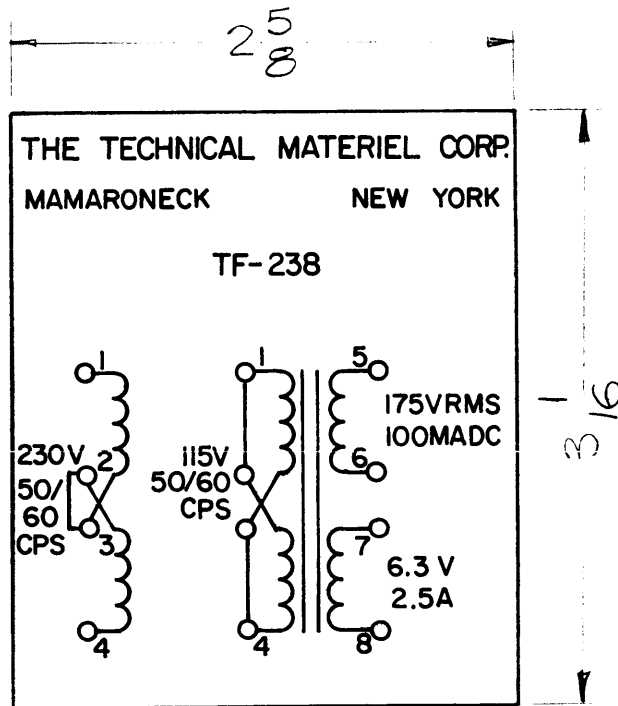
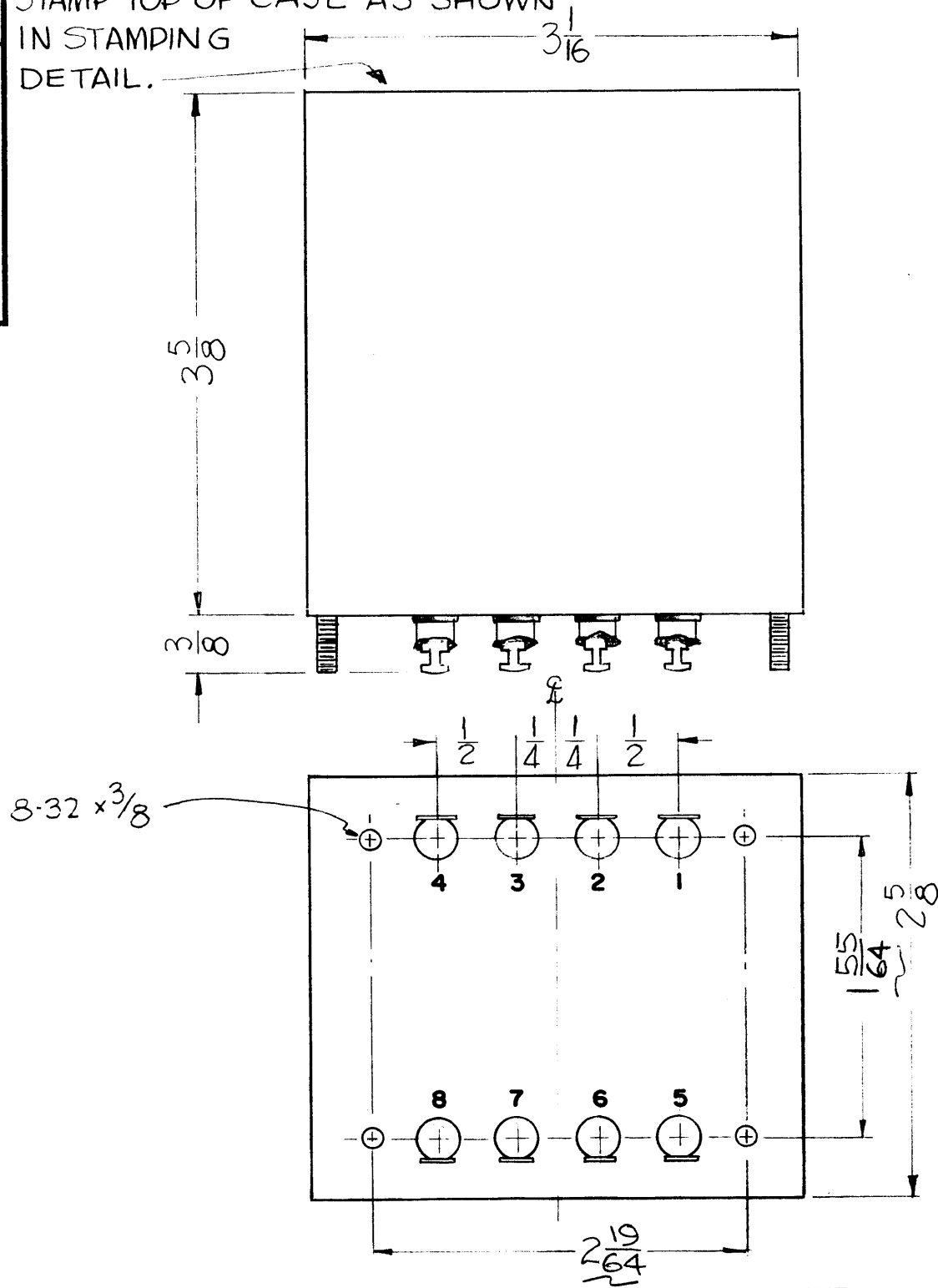
SYM	DESCRIPTION	DATE	CH. NO.	DRAFTS	CHECKER	ENG. APP.
	UNLESS OTHERWISE SPECIFIED: DIMENSIONS ARE IN INCHES TOLERANCES ON FRACTIONS ± 1/64 DECIMALS ± .05 ANGLES ± 1/20					
	SCALE: S-401-30#4231 MAXIMUM ALLOWABLE TOLERANCES HAVE BEEN DETERMINED AND ANY DEVIATIONS WILL BE CAUSE FOR REJECTION. REMOVE ALL BURRS AND SHARP EDGES					

REQ. PER UNIT	MODEL	SECTION	ASSY. NO.	DATE
1	GPR-9Z			9-18-61
	USED ON			

REQ. ITEM	PART NO.	GELLMAN	DESCRIPTION	SYMBOL
		THE TECHNICAL MATERIEL CORP. MAMARONECK, NEW YORK		
	STOCK SIZE	TRANSFORMER, AUDIO OUTPUT		
	MATERIAL			
		RUZZO	JDE	JMA BP
		TYPE & TEMPER	HEAT TREAT. SPEC.	DRAWN CHECKER FINAL APPROVAL
				MP. TF-234
		FINISH & SPEC. NO.	ELEC. DES. APP.	MECH. DES. APP.

TF-238

STAMP TOP OF CASE AS SHOWN
IN STAMPING
DETAIL.



STAMPING DETAIL

ALL LETTERING BLACK GOTHIC

PRIMARY: 115/230 V
50/60 CPS

SECONDARY: (a) 175 V RMS @ 100 MA DC
(Into full Bridge rectifier. Capacitor
input to filter)
(b) 6.3 VAC @ 2.5A

INSULATION: 1500V to all windings.

NOTE: MANUFACTURED IN ACCORDANCE WITH MIL SPEC. T-27-A
EXCEPT THAT MIL SPEC T-27-A SHALL NOT APPEAR
ON CASE AND QUALIFICATION TESTING IS NOT REQUIRED.

THIS DRAWING IS THE PROPERTY OF THE TECHNICAL MATERIEL CORPORATION. IT IS LOANED TO YOU FOR YOUR INFORMATION ONLY AND MAY BE REPRODUCED OR USED TO MANUFACTURE ANYTHING SHOWN HEREON WITHOUT PERMISSION FROM THE TECHNICAL MATERIEL CORPORATION TO THE USER. THIS DRAWING IS LOANED FOR MUTUAL ASSISTANCE AND IS SUBJECT TO RECALL AT ANY TIME.

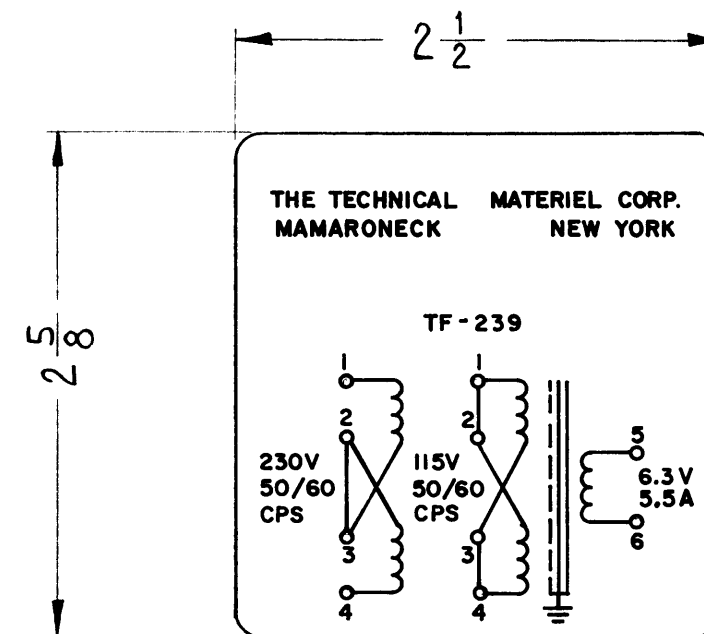
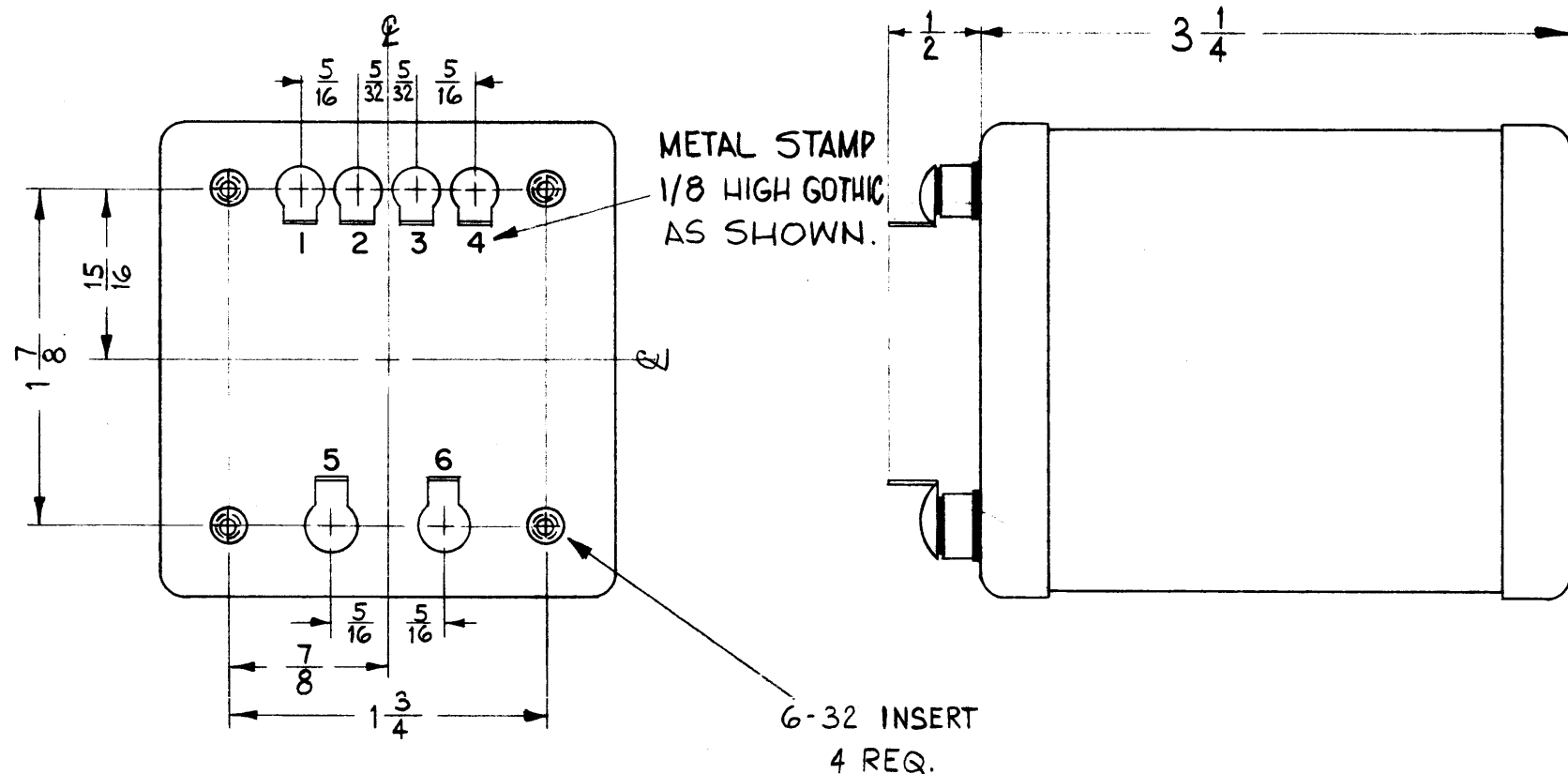
Property of:
THE TECHNICAL MATERIEL CORPORATION
MAMARONECK, NEW YORK

SYM	DESCRIPTION	DATE	CH. NO.	DRAFTS	CHECKER	ENG. APP.
	UNLESS OTHERWISE SPECIFIED: DIMENSIONS ARE IN INCHES TOLERANCES ON FRACTIONS $\pm 1/64$ DECIMALS $\pm .005$ ANGLES $\pm 1/2^\circ$					
	SCALE: MAXIMUM ALLOWABLE TOLERANCES HAVE BEEN DETERMINED AND ANY DEVIATIONS WILL BE CAUSE FOR REJECTION. REMOVE ALL BURRS AND SHARP EDGES					

REQ. PER UNIT	MODEL	SECTION	ASS'Y. NO.	DATE
1	TRX			9-8-61
	USED ON			

REQ. ITEM	PART NO.	DESCRIPTION	SYMBOL
		THE TECHNICAL MATERIEL CORP. MAMARONECK, NEW YORK	
	STOCK SIZE	TRANSFORMER, POWER	
	MATERIAL	STEP UP & STEP DOWN	
	TYPE & TEMPER	HEAT TREAT. SPEC.	DRAWN
			CHECKER
	FINISH & SPEC. NO.	ELEC. DES. APP.	MECH. DES. APP.
			FINAL APPROVAL
			TF-238

TF-239
A



ELECTRICAL SPECIFICATIONS~

PRIMARY~ TWO WINDINGS, NUMBERED AS SHOWN ON SCHEMATIC, TO BE CONNECTED IN PARALLEL FOR 115V, 50/60 CPS SINGLE PHASE INPUT & SERIES FOR 230V, 50/60 CPS SINGLE PHASE INPUT.

SECONDARY~ ONE WINDING, NUMBERED AS SHOWN ON SCHEMATIC. WINDING TO PROVIDE 6.3 VOLTS AT 5.5 AMPERES A.C. AN ELECTROSTATIC SHIELD SHALL BE INSERTED (FOIL).

MECHANICAL SPECIFICATIONS~

CASE~ HERMETICALLY SEALED STEEL.
FINISH~ S115 TMC SMOOTH GREY ENAMEL, EXCEPT TERMINAL END.

SIZE O/A~ 2 1/2 X 2 5/8 X 3 1/4 HIGH, NOT INCLUDING TERMINALS.

STAMPING~ TERMINALS SHALL BE METAL STAMPED 1/8 HIGH GOTHIC. OPPOSITE END SHALL BE STAMPED AS SHOWN.

NOTE: MANUFACTURED IN ACCORDANCE WITH MIL SPEC T-27-A EXCEPT THAT MIL SPEC T-27-A SHALL NOT APPEAR ON CASE & QUALIFICATION TESTING IS NOT REQUIRED.

SYM	DESCRIPTION	DATE	CH. NO.	DRAFTS	CHECKER	ENG. APP.
A	MOUNTING DETAIL DELETED	7-9-63	2481			

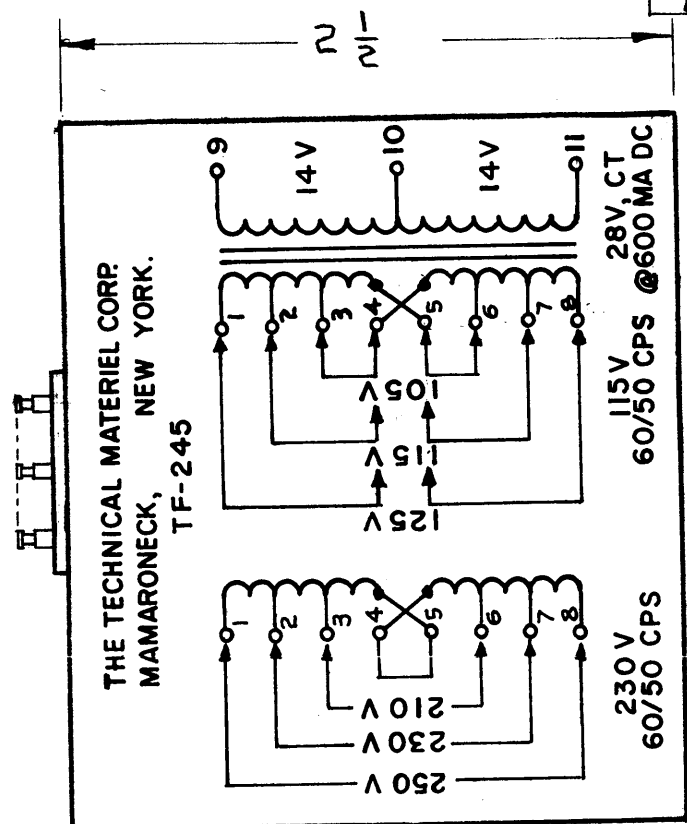
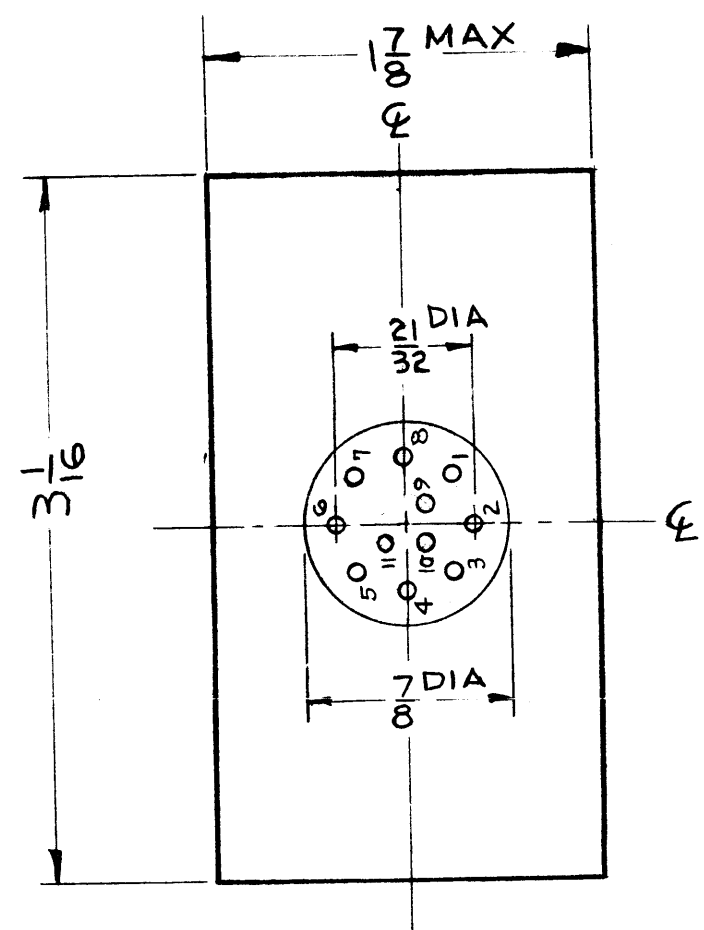
UNLESS OTHERWISE SPECIFIED:
DIMENSIONS ARE IN INCHES
TOLERANCES ON FRACTIONS ± 1/64 DECIMALS ± .005 ANGLES ± 1/2°

SCALE:
MAXIMUM ALLOWABLE TOLERANCES HAVE BEEN DETERMINED AND ANY DEVIATIONS WILL BE CAUSE FOR REJECTION.
REMOVE ALL BURRS AND SHARP EDGES

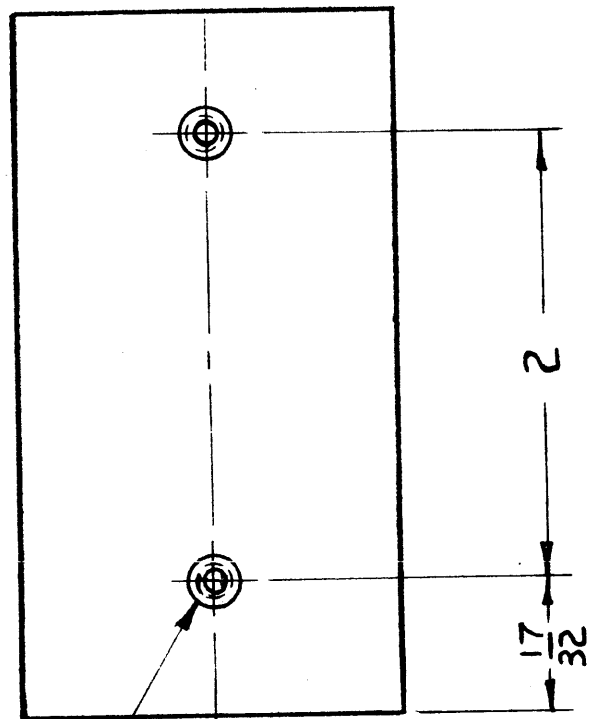
4	HFP-1		A-2382-3	2-21-62
2	SBS-1	PWR SUPPLY	A-2209-1	10-28-61
REQ. PER UNIT	MODEL	SECTION	ASS'Y. NO.	DATE
USED ON				

REQ.	ITEM	PART NO.	DESCRIPTION	SYMBOL
			THE TECHNICAL MATERIEL CORP. MAMARONECK, NEW YORK	
STOCK SIZE			TRANSFORMER, FILAMENT	
STEEL				
MATERIAL				
		W.A.F.	RUIZZO	Ron Kohn
TYPE & TEMPER		HEAT TREAT. SPEC.	DRAWN	CHECKER
SEE NOTE			RK	RK
FINISH & SPEC. NO.			ELEC. DES. APP.	MECH. DES. APP.
			TF-239	A

REVISIONS					
SYM	DESCRIPTION	DATE	E.M.N. NO.	DRAFT	CHKD
A	ADDED NOTE "5/16 MINIMUM THREAD DEPTH"	3-14-63	B53B	RC	JW
B	ON HEADER, TERMINAL NUMBERS RENUMBERED	5-14-63	8984	RC	JW



BLACK GOTHIC LETTERING AS SHOWN



#6-32 INSERT, 5/16 MINIMUM THREAD DEPTH 2 REQ'D

ELECTRICAL SPECIFICATIONS

PRIMARY: 115V/230V 50/60 CPS
 SECONDARY: 28V CENTER TAP @ 600 MA DC (INTO FULL WAVE RECTIFIER 500 UF CAPACITOR INPUT FILTER)
 INSULATION: 1500V TO ALL WINDINGS
 TERMINALS: INSULATED

MECHANICAL SPECIFICATIONS

CASE: HERMETICALLY SEALED, STEEL
 FINISH: S115 TMC SMOOTH GREY ENAMEL, EXCEPT TERMINAL END

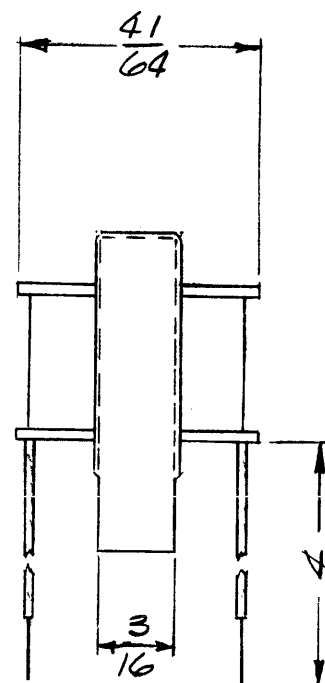
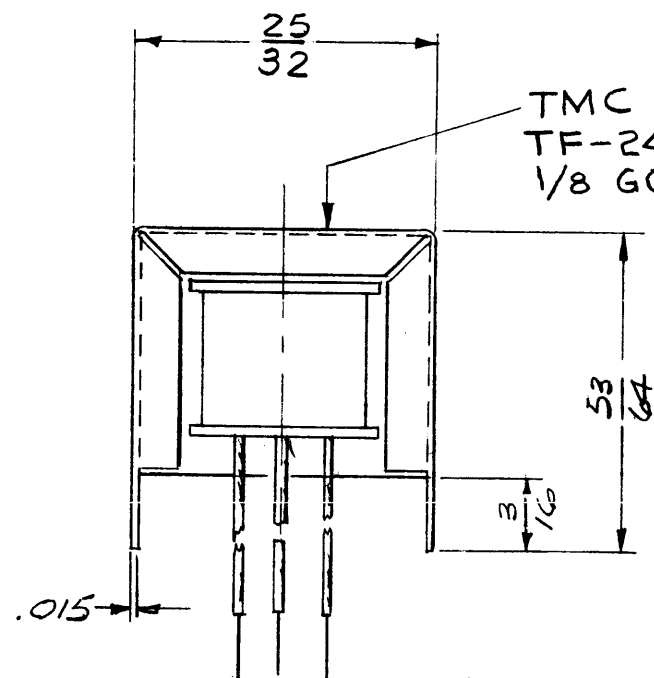
NOTE

MANUFACTURED IN ACCORDANCE WITH MIL SPEC T-27-A EXCEPT THAT MIL SPEC T-27-A SHALL NOT APPEAR ON CASE AND QUALIFICATION TESTING IS NOT REQUIRED.

REQ'D.	ITEM	PART NUMBER	DESCRIPTION	SYMBOL
STRUMER LIST OF MATERIAL				
MATERIAL			THE TECHNICAL MATERIEL CORP. MAMARONECK, NEW YORK	
SEE MECH SPEC				
FINISH			TITLE	
SEE MECH SPEC			TRANSFORMER, POWER, STEP DOWN	
UNLESS OTHERWISE SPECIFIED DIMENSIONS ARE IN INCHES AND INCLUDE CHEMICALLY APPLIED OR PLATED FINISHES			DRAWN: JW	DATE: 11-30-62
			CHECKED: JRo	DATE: 12-12-62
			ELECT. DES: JW	DATE: 12-12-62
			MACH. DES: JW	DATE: 12-12-62
DECIMALS: .X ± .05, .XX ± .01, .XXX ± .005			FINAL APPROVAL: BP	
FRACTIONS: ± 1/64, ANGLES: ± 0° 30'			TF-245	
TOLERANCES			SHEET	
			REV. LTR. B	

NOTES

1	SPU-2	ASS'Y. NO.
Q'TY./UNIT	MODEL USED ON	
NO SCALE	CODE	S 401-30
THE CONTENTS OF THIS DRAWING ARE THE EXCLUSIVE PROPERTY OF THE TECHNICAL MATERIEL CORP. ITS UNAUTHORIZED USE OR REPRODUCTION IN WHOLE OR IN PART IS STRICTLY FORBIDDEN.		



TF-247

ELECTRICAL SPECIFICATIONS.

PRIMARY IMPEDANCE:

10,000 OHMS

SECONDARY IMPEDANCE:

600 OHMS CENTER TAP

FREQUENCY RESPONSE:

150 CPS TO 5 KC WITHIN 3 DB

WITH 5 MA DC IN PRIMARY

POWER LEVEL:

25 MW MIN.

DC RESISTANCE: PRI: 700Ω SEC: 60Ω

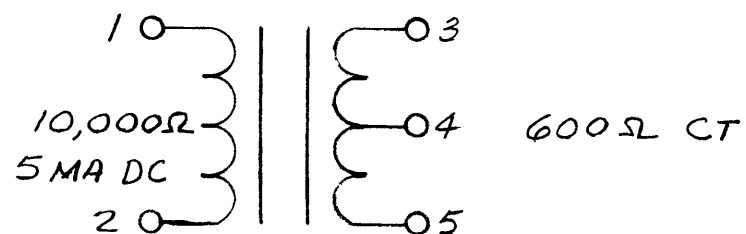
MECHANICAL SPECIFICATIONS:

20 AWG SOLID LEADS WITH REMOVABLE SLEEVING FOR PRINTED CIRCUIT USE

ENCAPSULATE WITH STYPOL

STAMP WITH TMC PART NO. & STAMP

LEAD NOS. AS DESIGNATED.

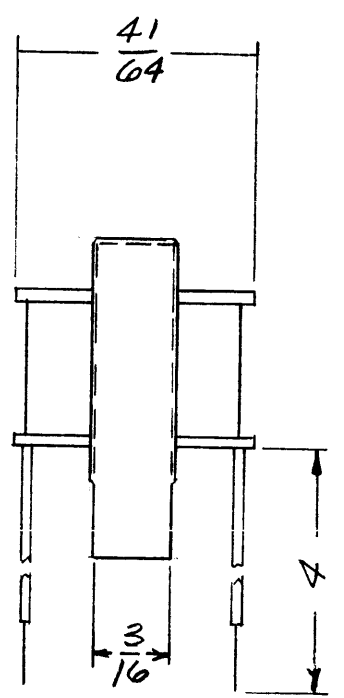
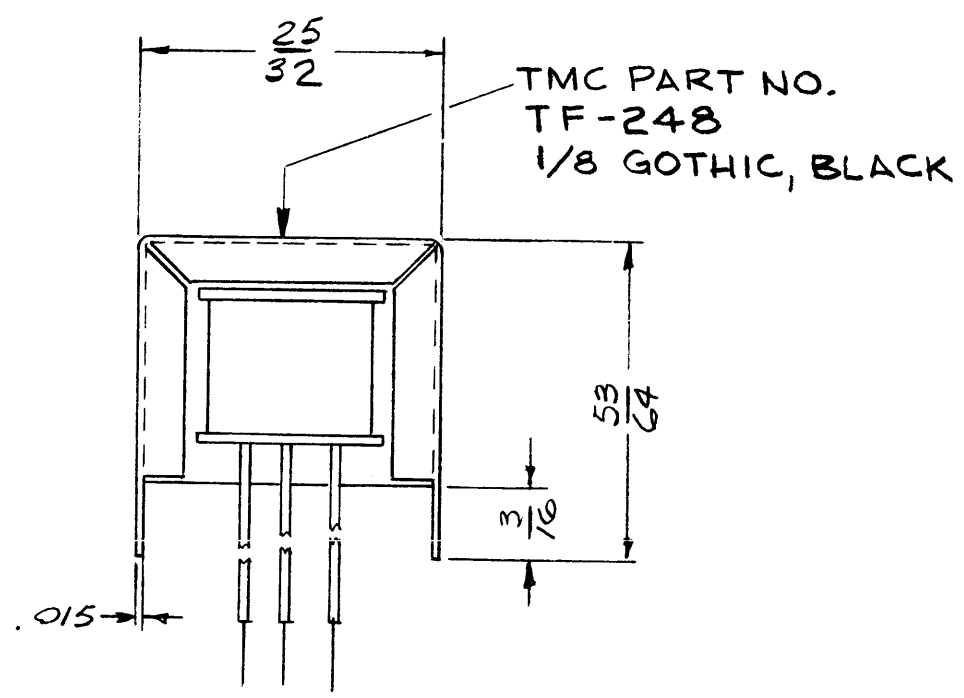


Property of:
THE TECHNICAL MATERIEL CORPORATION
MAMARONECK, NEW YORK

NOTES

1	SPU-2	
Q'TY./UNIT	MODEL USED ON	ASS'Y. NO.
SCALE 2:1	CODE	S401-30(2718-26)
THE CONTENTS OF THIS DRAWING ARE THE EXCLUSIVE PROPERTY OF THE TECHNICAL MATERIEL CORP. ITS UNAUTHORIZED USE OR REPRODUCTION IN WHOLE OR IN PART IS STRICTLY FORBIDDEN.		

REQ'D.	ITEM	PART NUMBER	DESCRIPTION	SYMBOL
STRUMMER LIST OF MATERIAL				
MATERIAL		THE TECHNICAL MATERIEL CORP. MAMARONECK, NEW YORK		
FINISH		TITLE TG TRANSFORMER, OUTPUT, AUDIO		
UNLESS OTHERWISE SPECIFIED DIMENSIONS ARE IN INCHES AND INCLUDE CHEMICALLY APPLIED OR PLATED FINISHES		DRAWN T. KAMIZER	DATE 9/21/62	FINAL APPROVAL BP
DECIMALS .X ± .08 .XX ± .01 .XXX ± .005		CHECKED JDe	DATE 10/16/62	DATE 11-27-62
TOLERANCES ± 1/64 ANGLES ± 0° 30'		ELECT. DES JMA	DATE 11-27-62	TF-247
		MECH. DES JMA	DATE 11-27-62	SHEET
				REV. LTR.

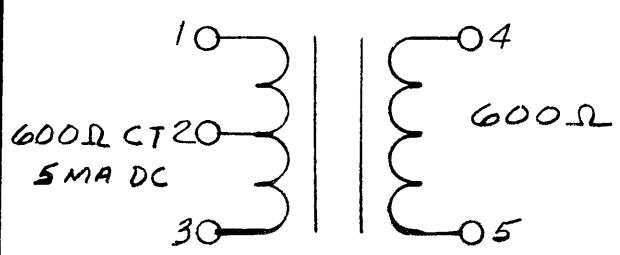


TF-248

REVISIONS						
SYM	DESCRIPTION	DATE	E.M.N. NO.	DRAFT	CHKD	APPD

ELECTRICAL SPECIFICATIONS
 PRIMARY IMPEDANCE:
 600 OHMS CENTER TAP
 SECONDARY IMPEDANCE:
 600 OHMS
 FREQUENCY RESPONSE:
 150 CPS TO 5 KC WITHIN 3 DB
 WITH 5 MA IN PRIMARY BALANCED
 MAX. UNBALANCE: 1 MA.
 POWER LEVEL:
 25 MW MIN.
 DC RESISTANCE: PRI: 38 Ω, SEC: 50 Ω

MECHANICAL SPECIFICATIONS
 20 AWG SOLID LEADS WITH REMOVABLE
 SLEEVING FOR PRINTED CIRCUIT USE.
 ENCAPSULATE WITH STYPOL
 STAMP TMC PART NO. & STAMP LEAD
 NOS. AS DESIGNATED

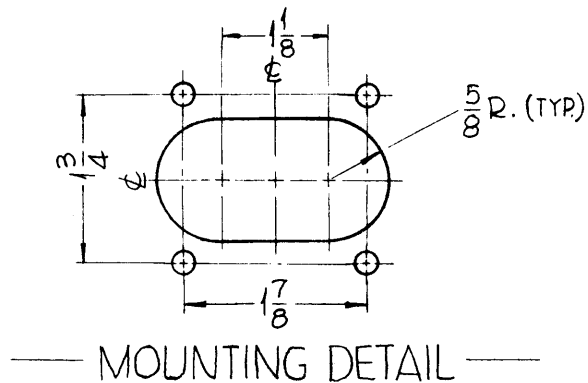


REQ'D.	ITEM	PART NUMBER	DESCRIPTION	SYMBOL
STRUMMER LIST OF MATERIAL				
MATERIAL			THE TECHNICAL MATERIEL CORP. MAMARONECK, NEW YORK	
FINISH			TITLE T 3 TRANSFORMER, INTERSTAGE, AUDIO	
UNLESS OTHERWISE SPECIFIED DIMENSIONS ARE IN INCHES AND INCLUDE CHEMICALLY APPLIED OR PLATED FINISHES			DRAWN T. RAMIREZ DATE 9/21/62 CHECKED [Signature] DATE 10/16/62 ELECT. DES. [Signature] DATE 11-27-62 MECH. DES. [Signature] DATE 11-27-62	FINAL APPROVAL [Signature] DATE 11-27-62 TF-248 SHEET
DECIMALS .X ± .05 .XX ± .01 .XXX ± .005			FRACTIONS ± 1/64 ± 0° 30'	TOLERANCES
THE CONTENTS OF THIS DRAWING ARE THE EXCLUSIVE PROPERTY OF THE TECHNICAL MATERIEL CORP. ITS UNAUTHORIZED USE OR REPRODUCTION IN WHOLE OR IN PART IS STRICTLY FORBIDDEN.				

Q'TY./UNIT	MODEL USED ON	ASS'Y. NO.
1	SPU-2	
SCALE	CODE	
2:1		S401-30 (2718-25)

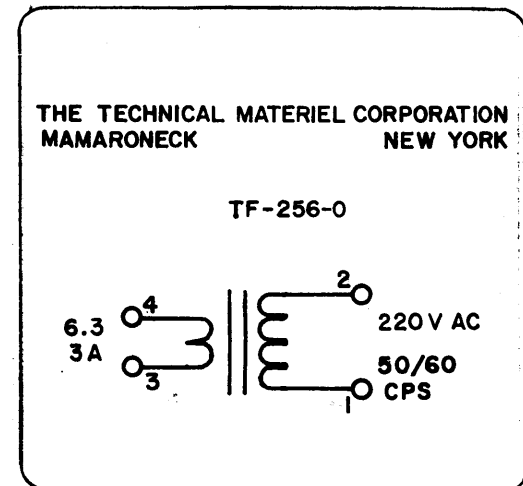
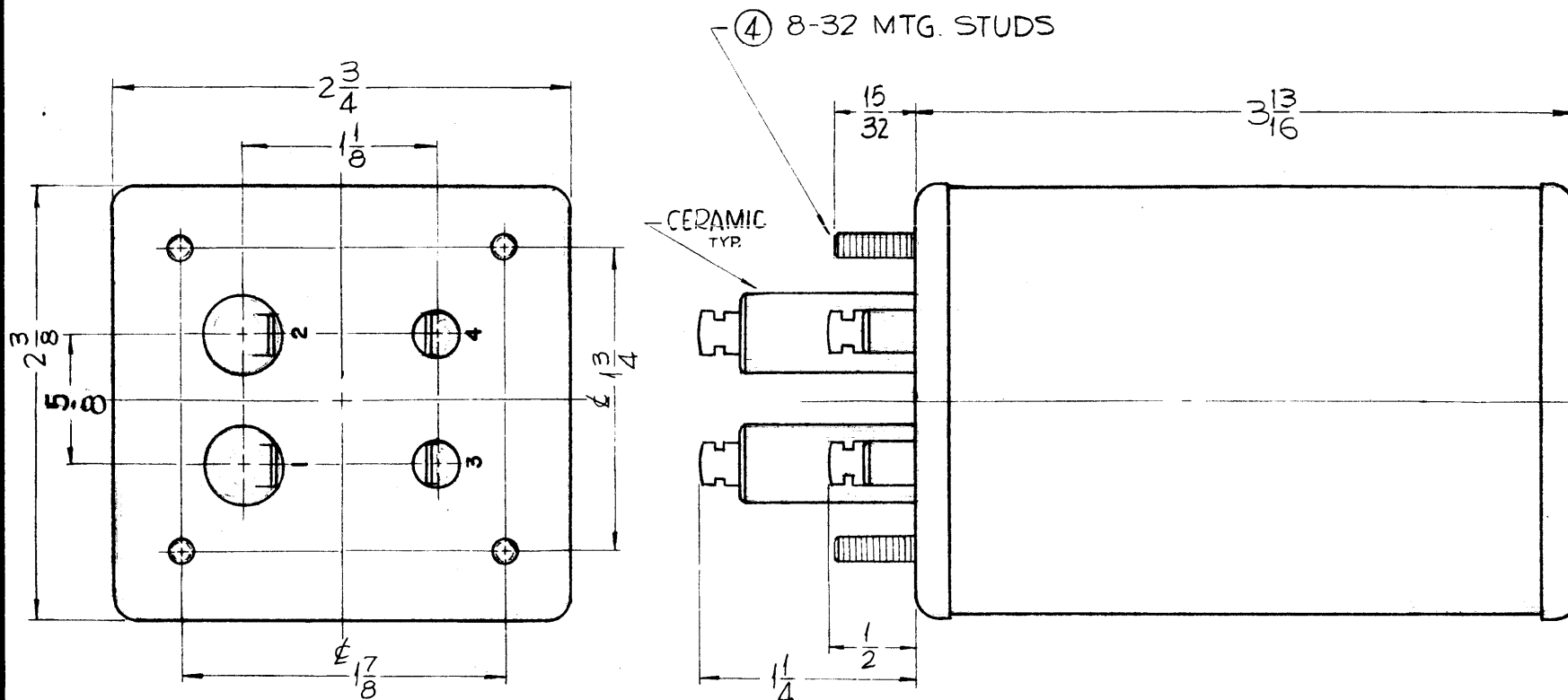
NOTES

THE TECHNICAL MATERIEL CORPORATION
MAMARONECK, NEW YORK



TF-256

REVISIONS					
SYM	DESCRIPTION	DATE	E.M.N. NO.	DRAFT	CHKD APPD
0	ORIGINAL RELEASE FOR PRODUCTION	3-264		A.M.	



ELECTRICAL SPECIFICATIONS:
 PRIMARY ~ 6.3V AT 3 AMPS (TERM. 3, 4)
 INSULATED ~ FOR 1,000 VAC
 SECONDARY ~ 220V AC, 50/60 CPS
 SINGLE PHASE.
 INSULATED ~ FOR 10,000 VAC (TERM 1, 2)

MECHANICAL SPECIFICATIONS
 CASE ~ HERMETICALLY SEALED IN
 RECTANGULAR METAL CAN.
 FINISH ~ S115-TMC SMOOTH GREY ENAMEL.
 SIZE ~ 3 13/16 x 2 3/4 x 2 3/8 EXCLUDING TERMINALS.

WINDING MUST BE WOUND IN SAME DIRECTION AT ALL TIMES, TERMS 3 AND 1 MUST BE START OF WINDINGS TO ASSURE PROPER PHASING

MANUFACTURED IN ACCORDANCE WITH MIL SPEC T-27-A EXCEPT THAT MIL SPEC T-27-A SHALL NOT APPEAR ON CASE AND QUALIFICATION TESTING IS NOT REQ'D

NOTES

1	GPT-200K	AX-398
1	GPT-40K	AP-118
Q'TY./UNIT	MODEL USED ON	ASS'Y. NO.
SCALE 1:1	CODE A	
THE CONTENTS OF THIS DRAWING ARE THE EXCLUSIVE PROPERTY OF THE TECHNICAL MATERIEL CORP. ITS UNAUTHORIZED USE OR REPRODUCTION IN WHOLE OR IN PART IS STRICTLY FORBIDDEN.		

REQ'D.	ITEM	PART NUMBER	DESCRIPTION	SYMBOL
LIST OF MATERIAL				
MATERIAL SEE MECHANICAL SPECS.			THE TECHNICAL MATERIEL CORP. MAMARONECK, NEW YORK	
FINISH SEE MECHANICAL SPECS.			TITLE TRANSFORMER, TRIGGER	
UNLESS OTHERWISE SPECIFIED DIMENSIONS ARE IN INCHES AND INCLUDE CHEMICALLY APPLIED OR PLATED FINISHES		DRAWN <i>Gianfilippo</i>	DATE 1-29-63	FINAL APPROVAL <i>RDR</i>
DECIMALS .X ± .05 .XX ± .01 .XXX ± .005		CHECKED <i>ACB</i>	DATE 2/10/64	
FRACTIONS ± 1/64 ANGLES ± 0° 30'		ELECT. DES. <i>CB</i>	DATE 2/10/64	
TOLERANCES		MECH. DES. <i>B</i>	DATE 2/10/64	
			SHEET	REV. LTR.

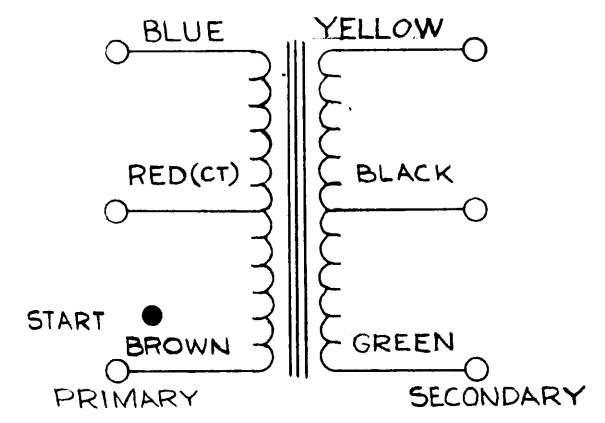
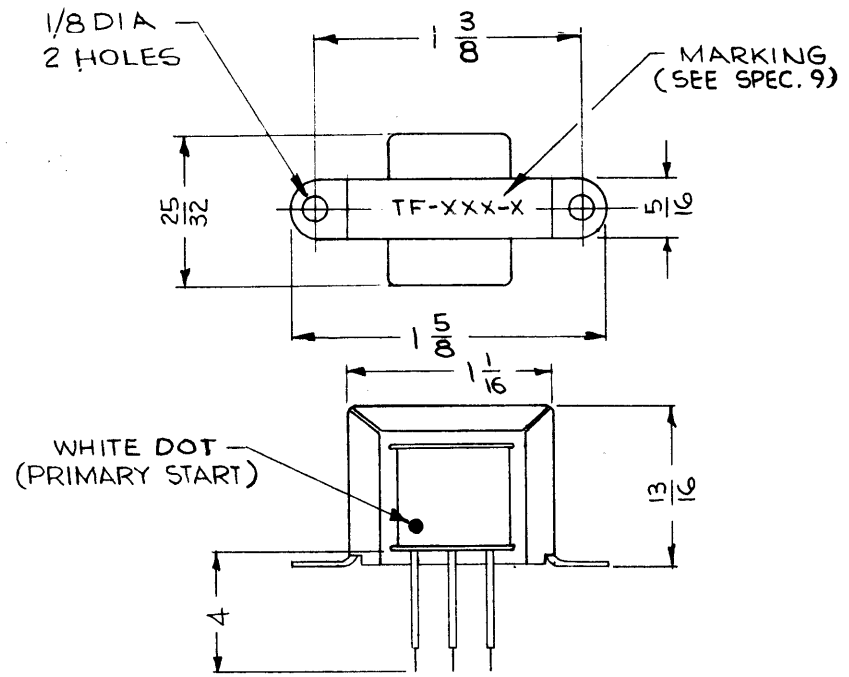
TF-267

THE CONTENTS OF THIS DRAWING ARE THE EXCLUSIVE PROPERTY OF THE TECHNICAL MATERIEL CORP. ITS UNAUTHORIZED USE OR REPRODUCTION IN WHOLE OR IN PART IS STRICTLY FORBIDDEN.

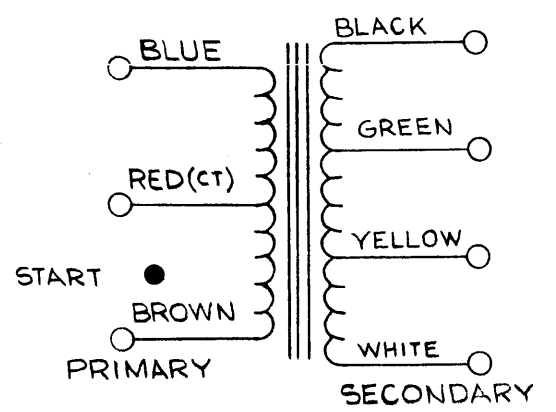
TMC PART NUMBER	MFR. REF.	MFR. PART NUMBER	APPLICATION	TURNS RATIO PRI.-SEC.	IMPEDANCE (OHMS)		DC RES. OHMS ±20%		OPER. FREQ. RANGE	FREQUENCY RESPONSE AT FREQ.	RATED OUTPUT (MILLI-WATTS)	SCHEMATIC STYLE SEE PICTORIALS
					PRI.	SEC.	PRI.	SEC.				
TF-267-1	A	FF4	OUTPUT	5.00:1	400 CT	4,8, 16	34	1.5	200 to 20,000 cps	±3db at 250-3500 cps	1000	B
TF-267-2	A	155A3	INTERSTAGE	1.76:1	3,000 CT	1000 CT	260	105	15,000 cps	±3db at 250-3500 cps	1000	A
TF-267-3	A	155A4	OUTPUT	2.50:1	4,000 CT	600 CT	370	60	15,000 cps	±3db at 250-3500 cps	1000	A
TF-267-4	A	155A5	OUTPUT	9.10:1	25,000 CT	1200 CT	1550	88	15,000 cps	±3db at 250-3500 cps	1000	A
TF-267-5	B	146H	OUTPUT	12.5:1	500CT	3.2	26	0.3	150 TO 45,000 CPS	+0-2db @ 1000CPS REF 150-45,000 CPS	700	C
TF 267-6	A	TA39	OUTPUT	2.5:1	100CT	4-8-16	10.9	1.45	250 TO 10,000 CPS	±2db 250-10K CPS	300	B
TF 267-7	A	155A36	OUTPUT	2.5:1	6-10K CT	600 CT						

SPECIFICATIONS:

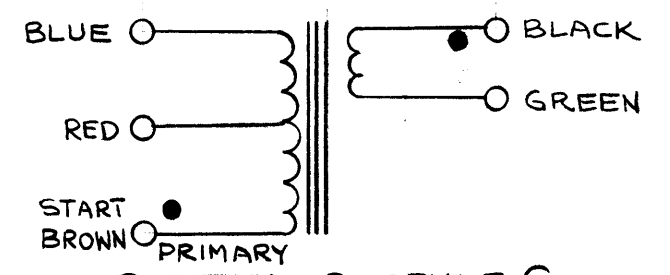
1. FREQUENCY RANGE: SEE CHART
2. db VARIATION OVER RANGE: ±3db
3. DC CURRENT RATING: NOT RATED
4. INTERNAL SHIELDING: NONE
5. LEADS: SIZE 26 AWG SOLID TINNED COPPER, 4 INCHES LONG, WITH REMOVEABLE COLOR CODED SLEEVING. (IT.#5 SIZE #20AWG "TF-267-5" ONLY)
6. CORE: SILICON STEEL
7. ENCAPSULATION: NONE
8. CONSTRUCTION: OPEN-FRAME TYPE
9. MARKING: TMC PART NUMBER (PER CHART) TO BE STAMPED ON BRACKET AS SHOWN.
10. BRACKET: MATERIAL - STEEL
FINISH - CADMIUM PLATE



SCHEMATIC ~ STYLE A



SCHEMATIC ~ STYLE B



SCHEMATIC ~ STYLE C

D	TF 267-7 ADD	11-24-63	GDL			
C	ADD TF 267-6	12-27-63	21114	9E	EP	EP
B	SPECS. #5 REVISED, S401 #5 ADDED SCHEMATIC-STYLE C ADD, TF-267-5 ADD.	8.19.64	12166	WB	@	RKA
A	YELLOW LEAD WAS GREEN GREEN LEAD WAS YELLOW	6/9/64	11495	A.M.	@	TRE
SYM	DESCRIPTION	DATE	CH. NO.	DRAFTS	CHECKER	ENG. APP.
UNLESS OTHERWISE SPECIFIED:		SCALE: NOT TO SCALE				
DIMENSIONS ARE IN INCHES		MAXIMUM ALLOWABLE TOLERANCES HAVE BEEN DETERMINED AND ANY DEVIATIONS WILL BE CAUSE FOR REJECTION.				
TOLERANCES ON FRACTIONS ± 1/64 DECIMALS ± .005 ANGLES ± 1/2°		REMOVE ALL BURRS AND SHARP EDGES				

1(-5)	TTR-10				
1(-4)	TTR-10				
1(-3)	TTR-10				
1(-2)	TTR-10				
1(-1)	TTR-10			7-18-63	
REQ. PER UNIT	MODEL	SECTION	ASS'Y. NO.	DATE	
USED ON					

CODE	S-401-230 (1-4)	S401-158 (-5)
REQ. ITEM	PART NO.	KOHN DESCRIPTION E3037,48 THRU S1 SYMBOL
THE TECHNICAL MATERIEL CORP. MAMARONECK, NEW YORK		
TRANSFORMER, AUDIO FREQ		
MATERIAL		
TYPE & TEMPER	HEAT TREAT. SPEC.	DRAWN CHECKED FINAL APPROVAL
		RON KOHN 7-19-63 ELEC. DES. APP. MECH. DES. APP.
FINISH & SPEC. NO.		TF-267 D

