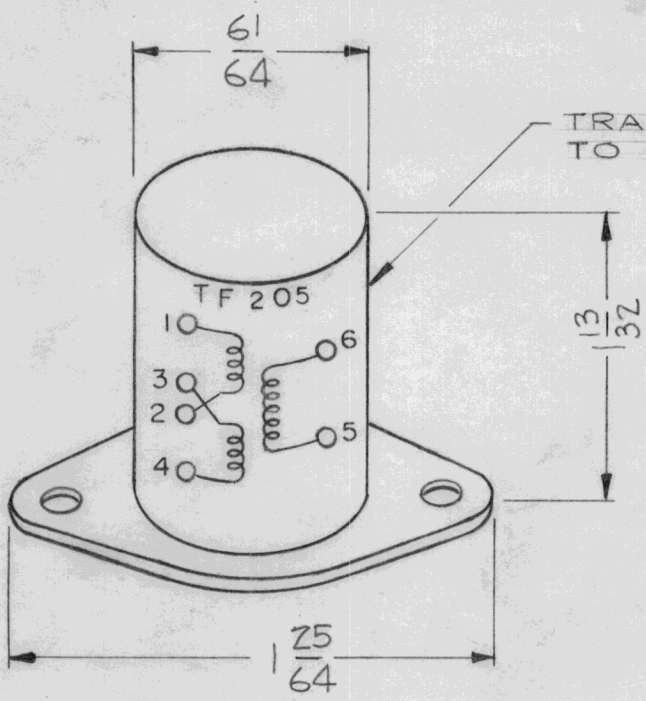


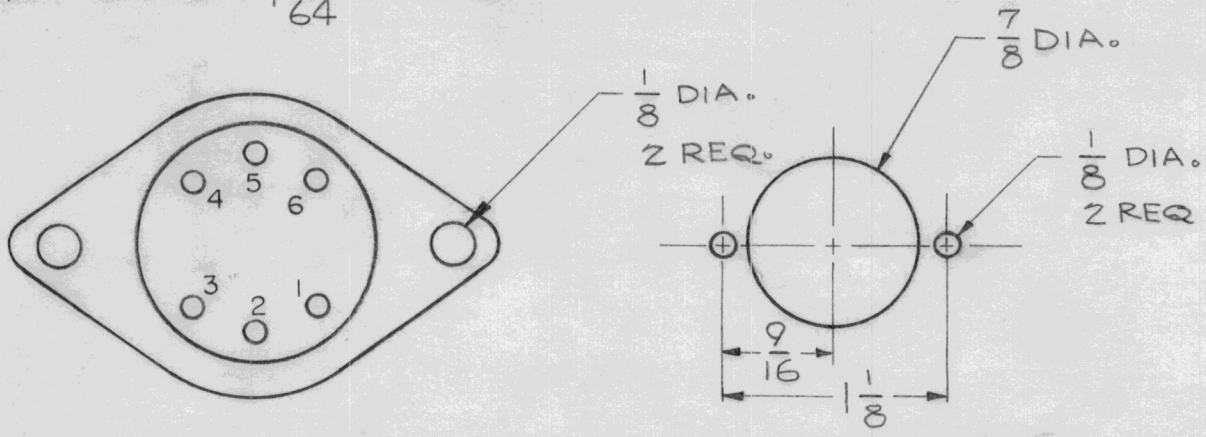
REQ. PER UNIT	USED ON		
	MODEL	ASS'Y. NO.	DATE
1	RSC-2		1-8-59

TF-205 A



TRANSFORMER NUMBER AND SCHEMATIC TO BE STAMPED ON SIDE OF CAN.

RECOMMENDED APPLICATION - 26/13:1 INPUT TO GRID.  
 MILITARY TYPE - TF1A10YY.  
 PRI. IMP. OHMS - 150/300.  
 SEC. IMP. OHMS - 100K.  
 D.C. IN PRI. MA - 0.  
 RESPONSE ± 2db - 200 - 3,000 CPS.  
 MAX. LEVEL dbm - +10.  
 CASE: HERMETICALLY SEALED.  
 FINISH: SMOOTH GRAY ENAMEL.



REQ.	ITEM	PART NO.	DESCRIPTION		SYMBOL
			THE TECHNICAL MATERIEL CORP.		
			MAMARONECK, NEW YORK		
			TRANSFORMER, AUDIO		
			MATERIAL		
			J.C. BIELE	file	AMB
			DRAWN	CHECKED	FINAL APPROVAL
					TF-205 A
			FINISH & SPEC. NO.	ELEC. DES. APP	MECH. DES. APP

ISSUE	ITEM	CHANGED FROM	DATE	CH. NO.	DRAFTS	CHECKER	ENG. APP.
A	1	STAMP NO. ON SIDE OF CAN WAS TF5014	1/26/59	723	J.C.B.	JHS	AMB

TOLERANCES: DEC. DIM. ±, FRAC. DIM. ±, ANGULAR DIM. ±

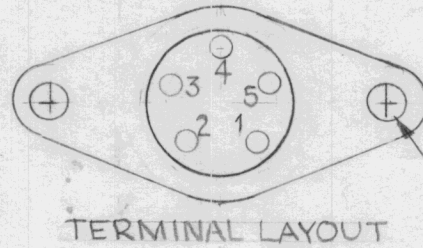
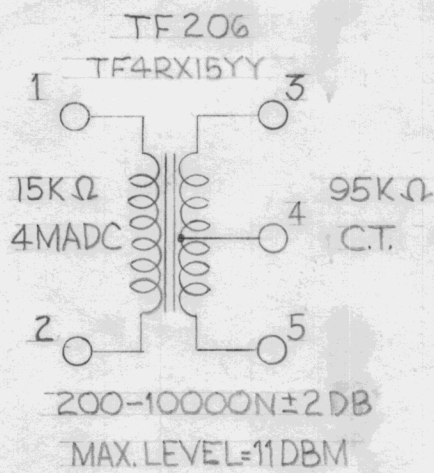
SCALE: A

MAXIMUM ALLOWABLE TOLERANCES HAVE BEEN DETERMINED AND ANY DEVIATIONS WILL BE CAUSE FOR REJECTION. REMOVE ALL BURRS AND SHARP EDGES

# ELECTRICAL SPECIFICATIONS

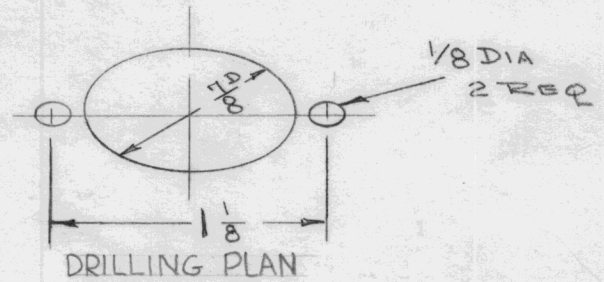
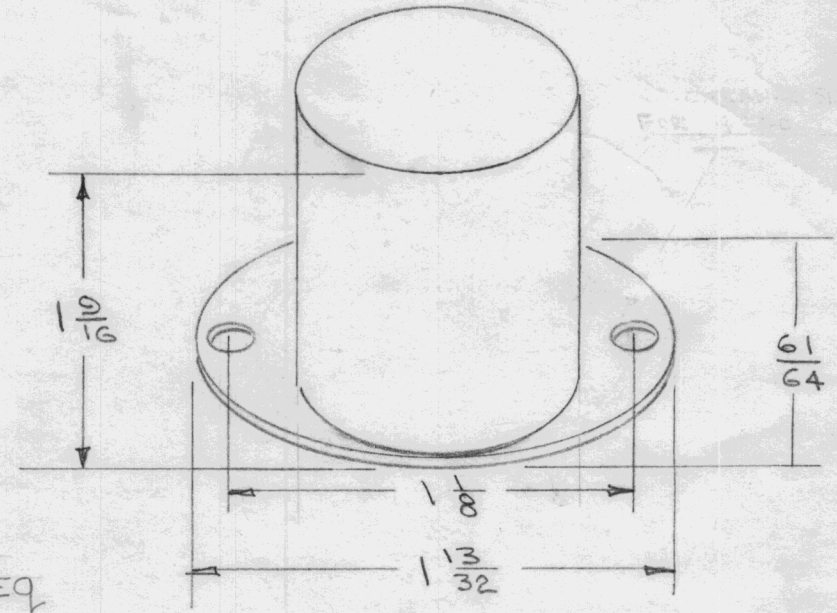
PRI. IMP.  $\Omega$  15,000  
 SEC. IMP.  $\Omega$  95,000 C.T.  
 UNBAL DC IN PRI. MA 4  
 RESPONSE  $\pm$  2 db 200, -10,000 ~  
 MAX LEVEL dbm +11  
 MIL TYPE TF4RX15YY  
 5 TERMINAL SOLDER LUG TYPE  
 CASE HERMETICALLY SEALED  
 FINISH-SMOOTH GRAY ENAMEL (S-115)

REQ. PER. UNIT	USED ON			TF-206	A
	MODEL	ASS'Y. NO.	DATE		



TERMINAL LAYOUT

$\frac{1}{8}$  DIA  
2 REQ



DRILLING PLAN

STAMP AS SHOWN-BLACK GOTHIC

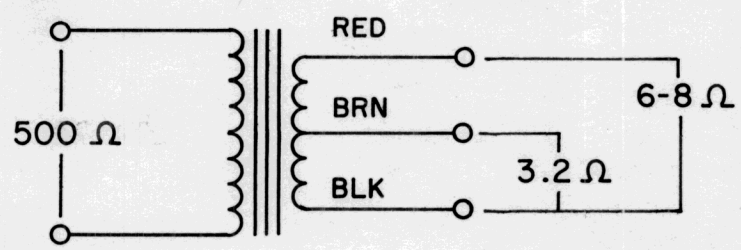
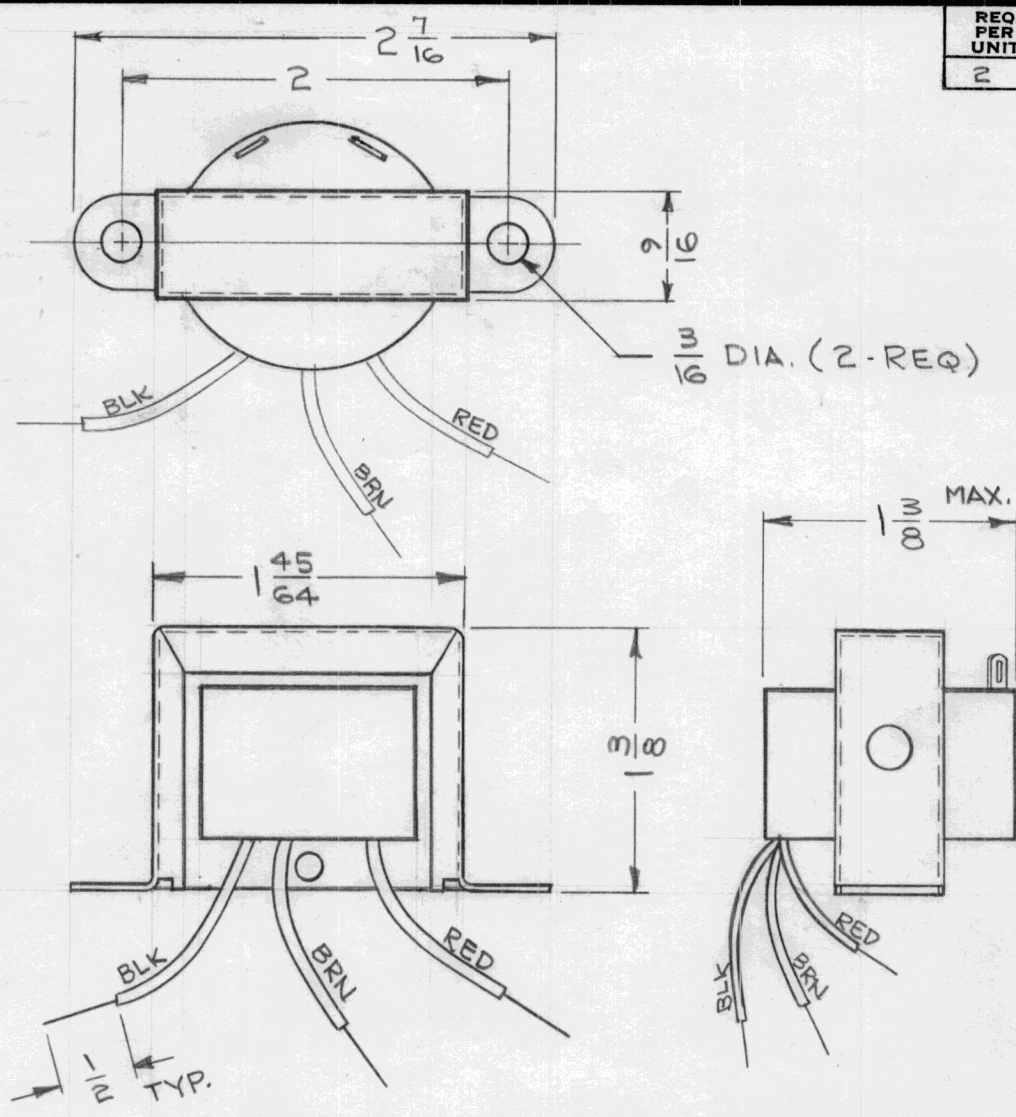
							REQ.	ITEM	PART NO.	DESCRIPTION	SYMBOL	
							<b>THE TECHNICAL MATERIEL CORP.</b>					
							MAMARONECK, NEW YORK					
							TRANSFORMER AUDIO					
							STOCK SIZE					
							MATERIAL					
A	1	ELEC SPECS ADDED		3-20-59	1196	DM	RWB					
ISSUE	ITEM	CHANGED FROM		DATE	CH. NO.	DRAFTS	CHECKER	ENG. APP.				
TOLERANCES				SCALE:								
DEC. DIM. $\pm$				MAXIMUM ALLOWABLE TOLERANCES HAVE BEEN DETERMINED AND ANY DEVIATIONS WILL BE CAUSE FOR REJECTION. REMOVE ALL BURRS AND SHARP EDGES								
FRAC. DIM. $\pm$												
ANGULAR DIM. $\pm$												
A												
							TYPE & TEMPER	HEATTREAT. SPEC.	DRAWN		CHECKED	FINAL APPROVAL
									RWB			TF-206
							FINISH & SPEC. NO.		ELEC. DES. APP	MECH. DES. APP		A





REQ. PER UNIT	USED ON			TF-261 XI
	MODEL	ASS'Y. NO.	DATE	
2	LSP-11	A-3115	2-7-64	

TYPE: LINE TO SPEAKER  
 IMPEDANCE: PRIMARY - 500 OHMS  
 SECONDARY - 6 to 8 OHMS/3.2OHMS  
 DIRECT CURRENT RATING: NOT RATED  
 AUDIO OPERATING LEVEL: 5.0 WATTS  
 FREQUENCY RANGE: 100 to 20,000CPS  $\pm 2.0$  db  
 TURNS RATIO: 8.8: 1 OVERALL  
 CASE DATA: TYPE - CHANNEL FRAME  
 MATERIAL - STEEL  
 FINISH - CADMIUM PLATE  
 TERMINAL DATA: QUANTITY-3 WIRE LEADS, 6-1/2" 2 TERMINALS  
 WEIGHT: 1/4 POUND



—SCHEMATIC DIAGRAM—

REQ.	ITEM	PART NO.	JOHNSON	DESCRIPTION	SYMBOL						
				THE TECHNICAL MATERIEL CORP. MAMARONECK. NEW YORK							
				TRANSFORMER, AUDIO FREQUENCY							
SYM	DESCRIPTION	DATE	CH. NO.	DRAFTS	CHECKER	ENG. APP.	MATERIAL				
	UNLESS OTHERWISE SPECIFIED DIMENSIONS ARE IN INCHES AND INCLUDE CHEMICALLY APPLIED OR PLATED FINISHES	SCALE									
DECIMALS .X $\pm .05$ .XX $\pm .01$ .XXX $\pm .005$	TOLERANCES	FRACTIONS $\pm \frac{1}{64}$ ANGLES $\pm 0^\circ 30'$	CODE				TYPE & TEMPER	HEAT TREAT. SPEC.	DRAWN	CHECKED	FINAL APPROVAL
			C	S401-157(A8101)					2/10/64		TF-261
							FINISH & SPEC. NO.	ELEC. DES. APP.	MECH. DES. APP.		

THE CONTENTS OF THIS DRAWING ARE THE EXCLUSIVE PROPERTY OF THE TECHNICAL MATERIEL CORP. ITS UNAUTHORIZED USE FOR REPRODUCTION IN WHOLE OR IN PART IS STRICTLY FORBIDDEN.

REQ. PER UNIT

1

MODEL

VLR-1

USED ON

ASS'Y. NO.

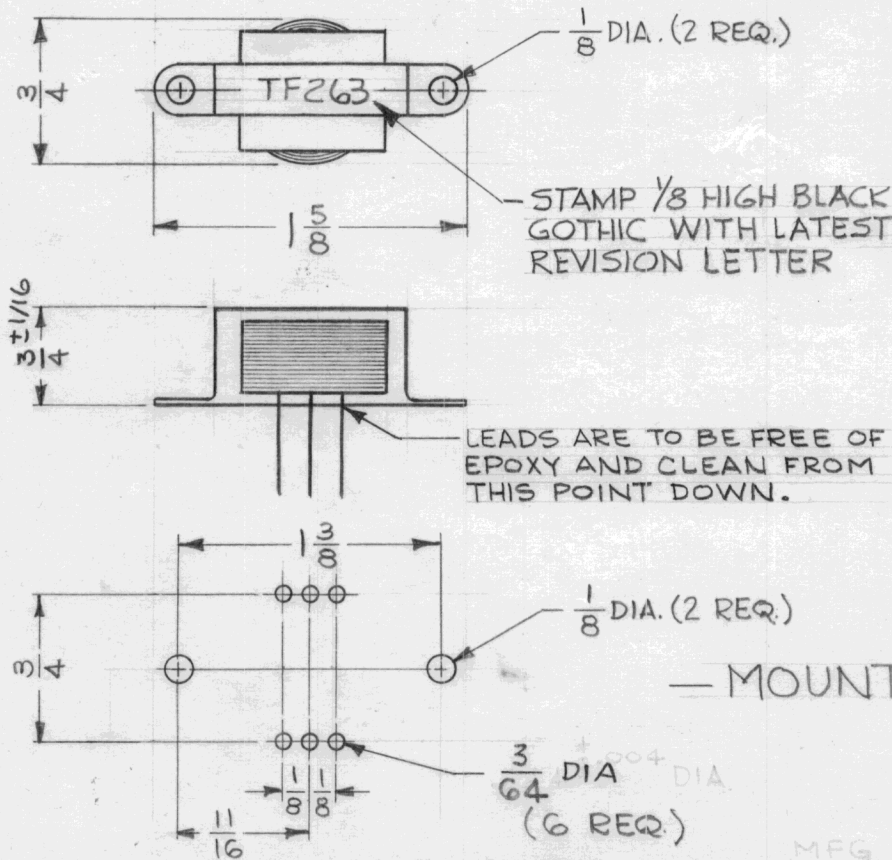
A-3168

DATE

5-24-63

TF 263 A

DIMENSIONS ARE BEFORE DIPPING.



SPECIFICATION: ~ FREQUENCY ~

IMPEDANCE ~ #20 AWG TINNED COPPER  
 PRIMARY - 600 Ω CT 1/2" LONG MIN.  
 SECONDARY - 600 Ω CT  
 CURRENT RATING ~ NOT RATED. Ω CT.  
 TURNS RATIO ~ NOT RATED. 200 Ω CT.  
 FREQUENCY DATA ~ POWER - 15 MW  
 A - 50 cps TO 7500 cps ±1.5 db.  
 (5ma UNBALANCED PRIMARY CURRENT)  
 B - 20 cps TO 40,000 cps ±1.5 db.  
 (BALANCED PRIMARY, 15 MW).  
 CASE DATA ~ EPOXY DIPPED. 15 MW.  
 TERMINAL DATA ~ #20 AWG TINNED COPPER  
 WIRE 1-1/2" LONG MIN.  
 MAX. PRIMARY POWER ~ 350 MW.

— MOUNTING DETAIL —

MFG PART NO. AD-162

REQ.	ITEM	PART NO.	M. GELLMAN	DESCRIPTION	SYMBOL							
		#		THE TECHNICAL MATERIEL CORP. MAMARONECK. NEW YORK								
A	DIM 3/4 ± 1/16 WAS 1/2 AD-162 DELE. FROM S-401	9.4.64 12305	KB	MP.								
O	ORIGINAL RELEASE FOR PRODUCTION	5-11-64 O	A.M.	@								
SYM	DESCRIPTION	DATE	CH. NO.	DRAFTS	CHECKER	ENG. APP.	MATERIAL	TYPE & TEMPER	HEAT TREAT. SPEC.	DRAWN	CHECKED	FINAL APPROVAL
	UNLESS OTHERWISE SPECIFIED DIMENSIONS ARE IN INCHES AND INCLUDE CHEMICALLY APPLIED OR PLATED FINISHES	SCALE					#	#		By: [Signature]	@	RIC
	DECIMALS .X ± .05 .XX ± .01 .XXX ± .005	FRACTIONS ± 1/64 ANGLES ± 0° 30'	CODE	S-401-211	(A-2168)		#	#		[Signature]	[Signature]	TF-263 A
	TOLERANCES						FINISH & SPEC. NO.			ELEC. DES. APP.	MECH. DES. APP.	



