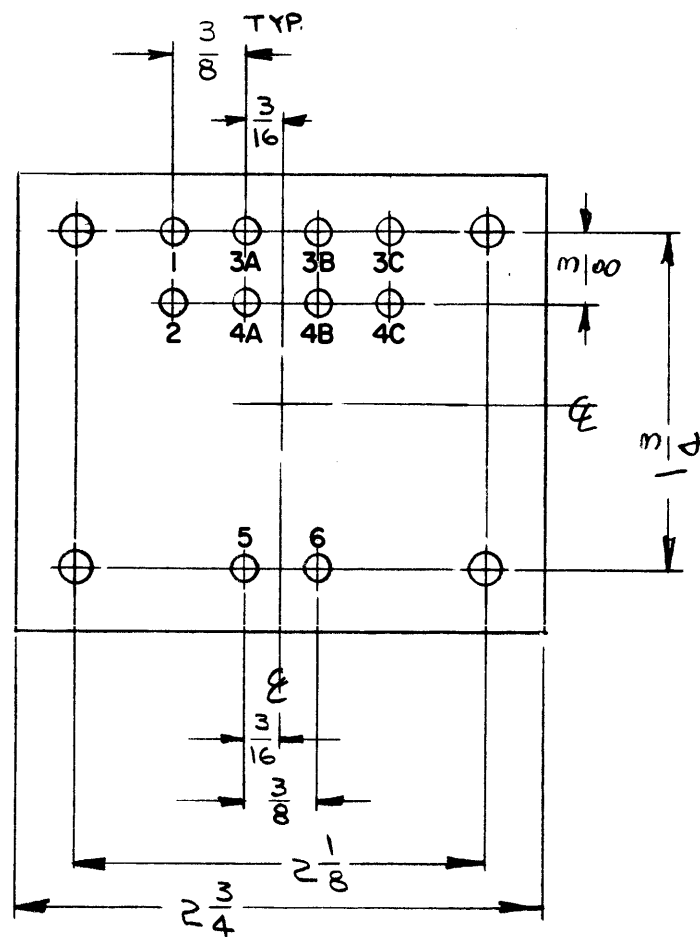
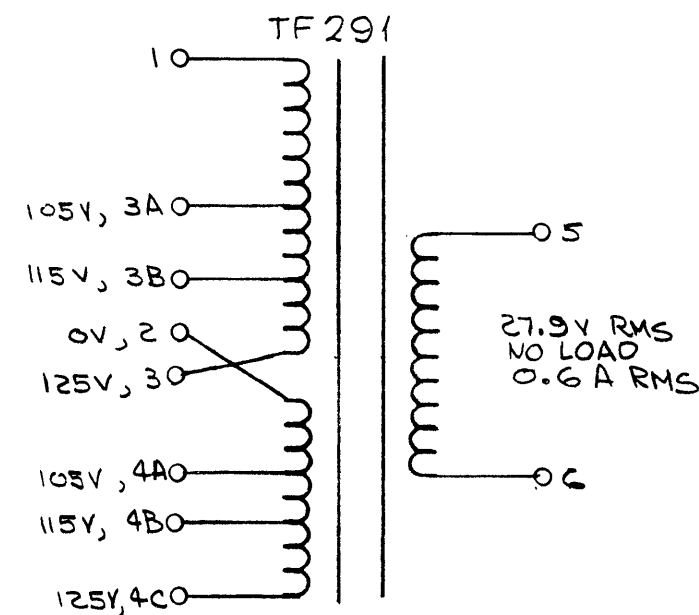


*6-32 MTG STUDS
(4 REQ)

TO BE PLACED ON TOP OF TRANSFORMER.

THE TECHNICAL MATERIEL CORPORATION
MAMARONECK NEW YORK



TF291

REVISIONS

SYM	DESCRIPTION	DATE	E.M.N. NO.	DRAFT	CHKD	APPD
Ø	ORIGINAL RELEASE FOR PRODUCTION	3/29/65			J.M.	NC

CASE DATA:

- A. FULLY ENCLOSED
- B. GRAY
- C. HERMETICALLY SEALED
- D. MATERIAL STEEL, HOT TINNED DIPPED

PRIMARY WINDINGS:

- A. 105V, 115V, 125V
- B. 50/60 CPS
- C. SINGLE

SECONDARY WINDING:

- A. 27.9V RMS, NO LOAD
- B. 0.6A

TERMINAL DATA:

- A. QUANTITY 10
- B. SOLDER LUG

MARKING:

- A. SCHEMATIC TO BE PLACED ON TOP OF TRANSFORMER.
- B. MARKING METHOD AS PER TMC SPEC. S727.
- C. LETTERS AND NUMERALS TO BE GOTHIC, ALL MARKING TO BE IN BLACK.

REQ'D.	ITEM	PART NUMBER	DESCRIPTION	SYMBOL
EATON LIST OF MATERIAL				
MATERIAL			THE TECHNICAL MATERIEL CORP. MAMARONECK, NEW YORK	
FINISH			TRANSFORMER, POWER	
UNLESS OTHERWISE SPECIFIED DIMENSIONS ARE IN INCHES AND INCLUDE CHEMICALLY APPLIED OR PLATED FINISHES			DRAWN: <i>G. Jensen</i> CHECKED: <i>...</i> ELECT. DES.: <i>...</i> MECH. DES.: <i>...</i>	DATE: 3-29-65 DATE: 3/29/65 DATE: 4/5/65
Q'TY./UNIT: 1:1 MODEL USED ON: S401-30 (6243B) CODE: C ASS'Y. NO.:			FINAL APPROVAL: <i>...</i> DATE: 4/5/65 SHEET: TF291 REV. LTR.: Ø	DATE: 4/5/65 REV. LTR.: Ø

NOTES

THE CONTENTS OF THIS DRAWING ARE THE EXCLUSIVE PROPERTY OF THE TECHNICAL MATERIEL CORP. ITS UNAUTHORIZED USE OR REPRODUCTION IN WHOLE OR IN PART IS STRICTLY FORBIDDEN.

DECIMALS: .X ± .05, .XX ± .01, .XXX ± .005
 FRACTIONS: ± 1/32, ANGLES: ± 0° 30'