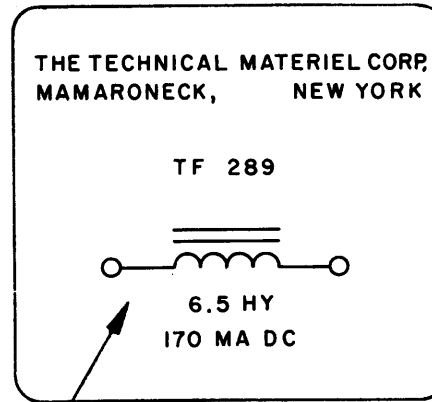
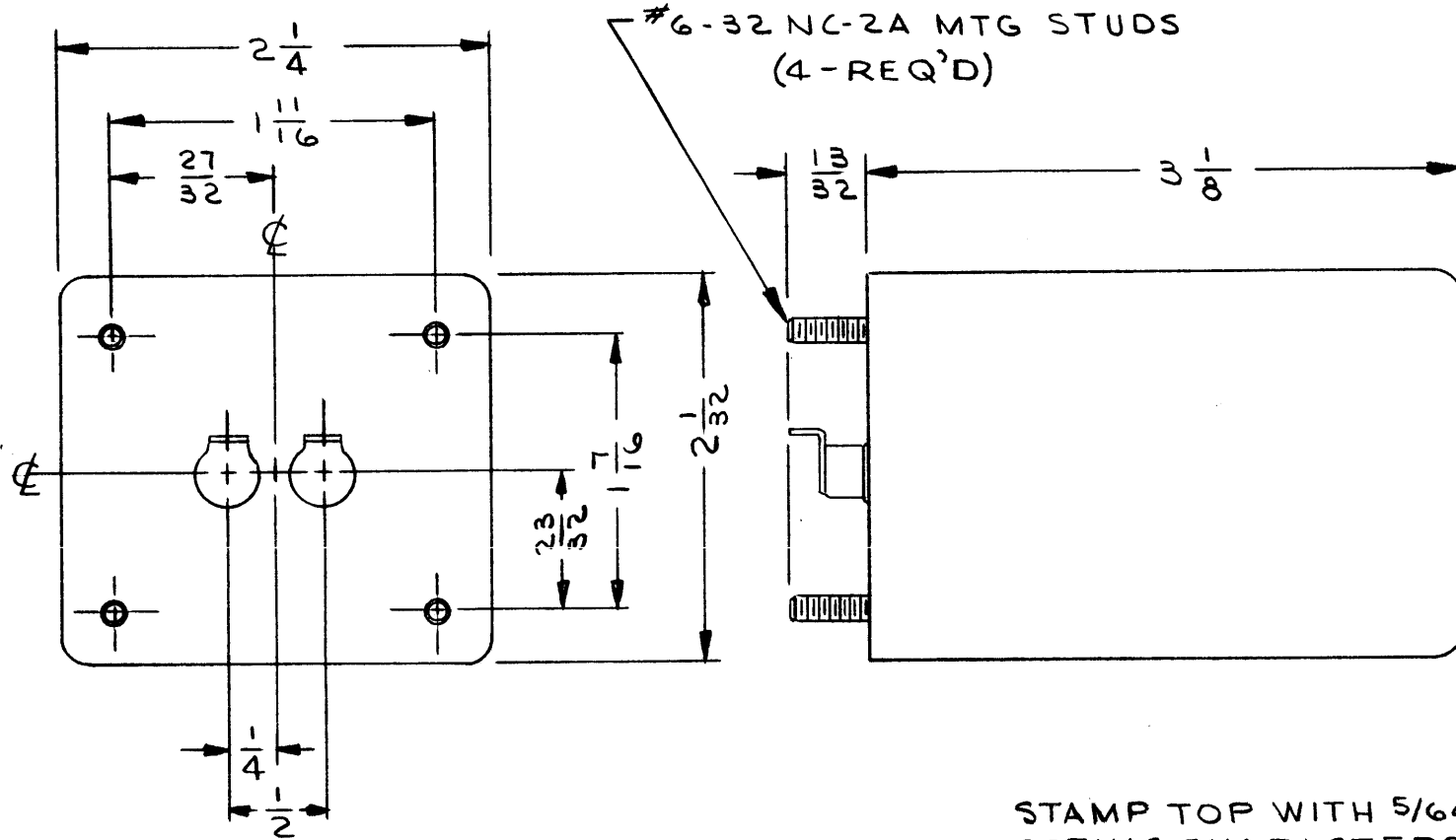


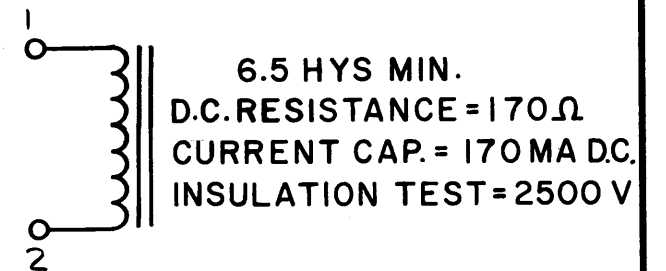
TF 289

REVISIONS

SYM	DESCRIPTION	DATE	E.M.N. NO.	DRAFT	CHKD	APPD
X	EXPERIMENTAL RELEASE	4-28-64	X	A.M.	@	MS
O	ORIGINAL RELEASE FOR PRODUCTION	4/28/64	O	A.M.		



STAMP TOP WITH 5/64 HIGH  
GOTHIC CHARACTERS IN BLK  
INK AS SHOWN.



NOTE:-

FILTER CHOKE TO BE MANUFACTURED IN  
ACCORDANCE TO SPEC. MIL-T-27A, EXCEPT  
QUALIFICATION TESTING & MIL-T-27A  
MARKINGS ARE NOT REQUIRED.

1	GPR-92	
QTY./UNIT	MODEL USED ON	ASS'Y. NO.
SCALE	CODE	
1:1	C	S401-30
THE CONTENTS OF THIS DRAWING ARE THE EXCLUSIVE PROPERTY OF THE TECHNICAL MATERIEL CORP. ITS UNAUTHORIZED USE OR REPRODUCTION IN WHOLE OR IN PART IS STRICTLY FORBIDDEN.		

REQ'D.	ITEM	PART NUMBER	DESCRIPTION	SYMBOL
LIST OF MATERIAL				
MATERIAL		THE TECHNICAL MATERIEL CORP. MAMARONECK, NEW YORK		
FINISH		TITLE		
S-115 T.M.C. GRAY		FILTER CHOKE		
UNLESS OTHERWISE SPECIFIED DIMENSIONS ARE IN INCHES AND INCLUDE CHEMICALLY APPLIED OR PLATED FINISHES		DRAWN J. LESHINSKI	DATE 4/27/64	FINAL APPROVAL DATE 4/28/64
		CHECKED @	DATE 4/28/64	
		ELECT. DES. MS	DATE 4-28-64	TF 289
		MECH. DES. MS	DATE 4-28-64	Ø
				REV. LTR.

NOTES