

THE CONTENTS OF THIS DRAWING ARE THE EXCLUSIVE PROPERTY OF THE TECHNICAL MATERIEL CORP. ITS UNAUTHORIZED USE FOR REPRODUCTION IN WHOLE OR IN PART IS STRICTLY FORBIDDEN.

REQ. PER UNIT

1

MODEL

VLR-1

USED ON

ASS'Y. NO.

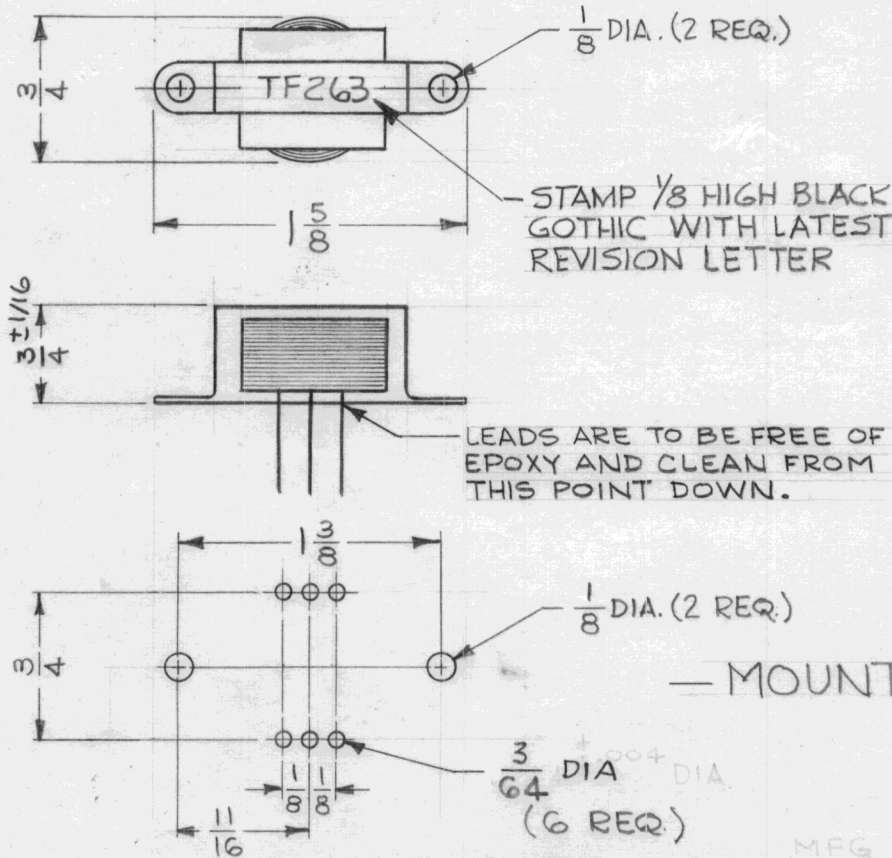
A-3168

DATE

5-24-63

TF 263 A

DIMENSIONS ARE BEFORE DIPPING.



SPECIFICATION: ~ FREQUENCY ~

IMPEDANCE ~ #20 AWG TINNED COPPER  
 PRIMARY - 600 Ω CT 1/2" LONG MIN.  
 SECONDARY - 600 Ω CT  
 CURRENT RATING ~ NOT RATED.  
 TURNS RATIO ~ NOT RATED.  
 FREQUENCY DATA ~  
 A - 50cps TO 7500 cps ±1.5db.  
 (5ma UNBALANCED PRIMARY CURRENT)  
 B - 20cps TO 40,000cps ±1.5db.  
 (BALANCED PRIMARY, 15mw).  
 CASE DATA ~ EPOXY DIPPED.  
 TERMINAL DATA ~ #20 AWG TINNED COPPER  
 WIRE 1-1/2" LONG MIN.  
 MAX. PRIMARY POWER ~ 350 mw.

— MOUNTING DETAIL —

MFG PART NO. AD-162

REQ.	ITEM	PART NO.	M. GELLMAN DESCRIPTION			SYMBOL
	#		THE TECHNICAL MATERIEL CORP. MAMARONECK. NEW YORK			
A			TRANSFORMER, AUDIO			
O			FREQUENCY			
SYM	DESCRIPTION	DATE	CH. NO.	DRAFTS	CHECKER	ENG. APP.
	UNLESS OTHERWISE SPECIFIED DIMENSIONS ARE IN INCHES AND INCLUDE CHEMICALLY APPLIED OR PLATED FINISHES	SCALE				
DECIMALS	TOLERANCES	FRACTIONS	CODE			
.X ± .05 .XX ± .01 .XXX ± .005		± 1/64 ANGLES ± 0° 30'	C	S-401-211 (A-3168)		
				TYPE & TEMPER	HEAT TREAT. SPEC.	DRAWN
						CHECKED
						FINAL APPROVAL
				FINISH & SPEC. NO.	ELEC. DES. APP.	MECH. DES. APP.
						TF-263 A