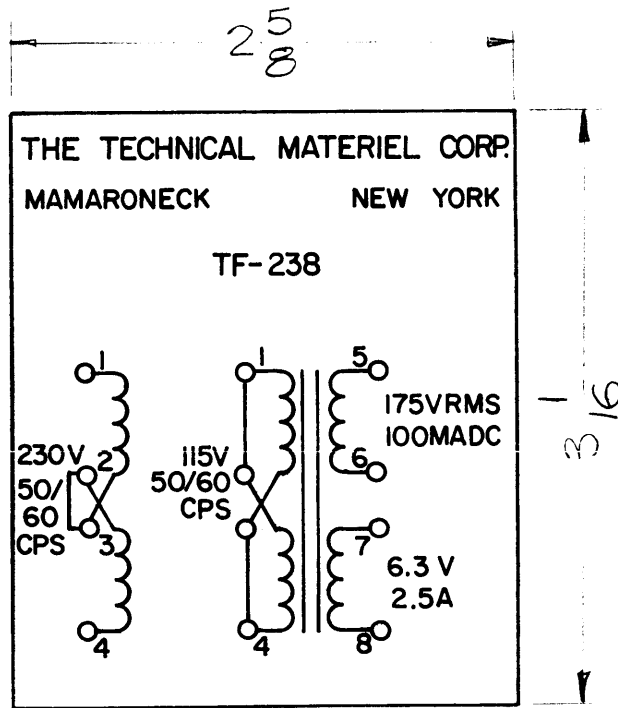
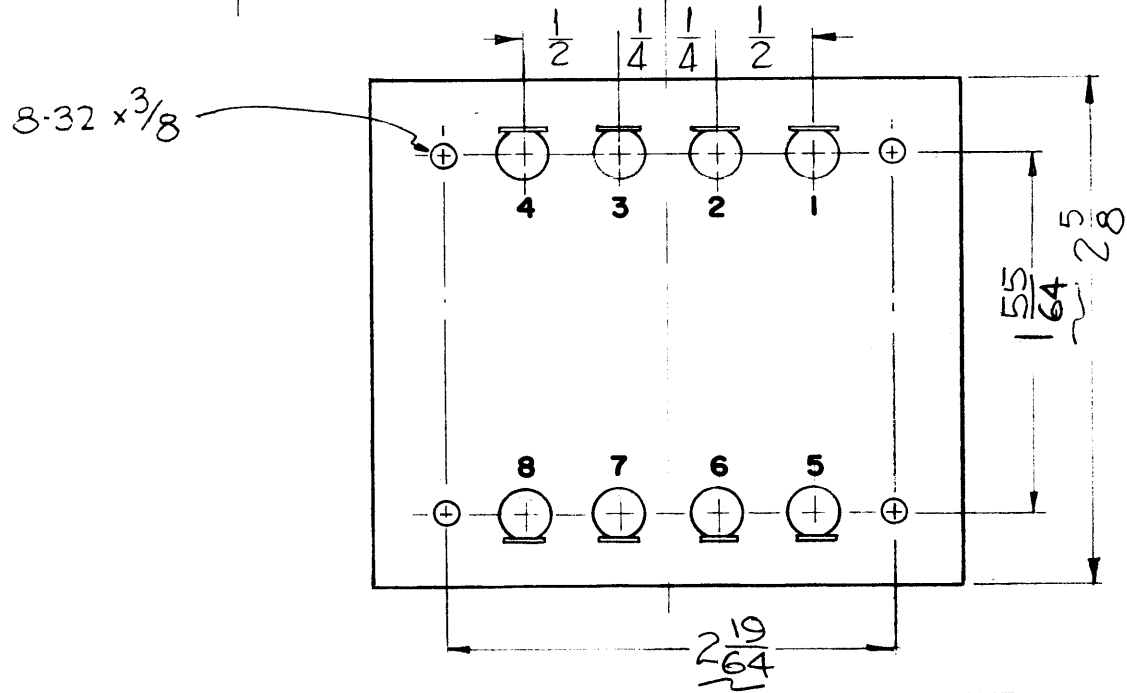
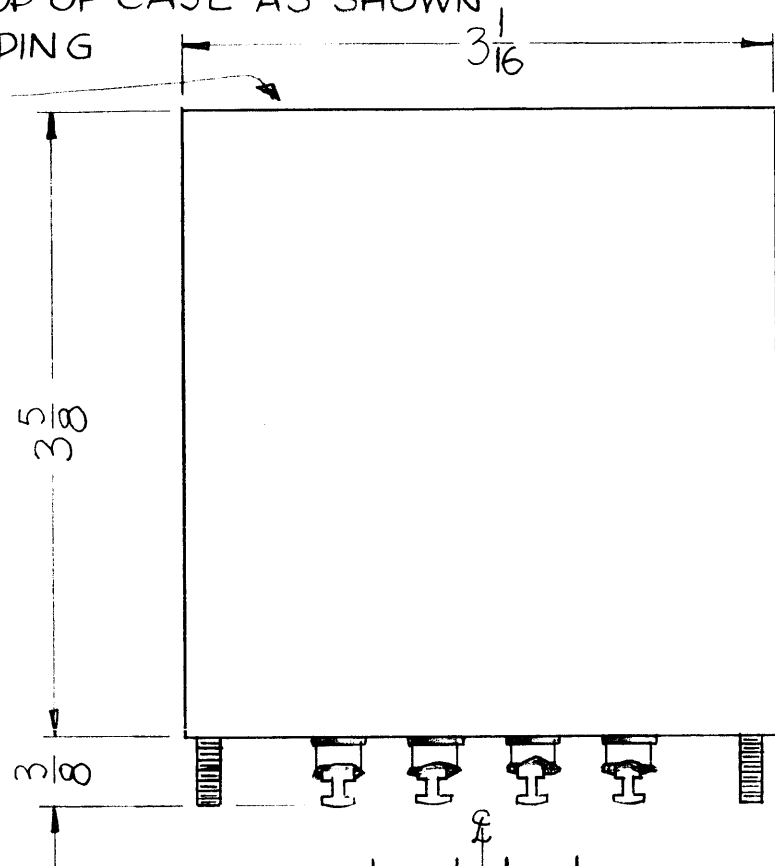


TF-238

STAMP TOP OF CASE AS SHOWN  
IN STAMPING  
DETAIL.



STAMPING DETAIL

ALL LETTERING BLACK GOTHIC

PRIMARY: 115/230 V  
50/60 CPS

SECONDARY: (a) 175 V RMS @ 100 MA DC  
(Into full Bridge rectifier. Capacitor  
input to filter)  
(b) 6.3 VAC @ 2.5A

INSULATION: 1500V to all windings.

NOTE: MANUFACTURED IN ACCORDANCE WITH MIL SPEC. T-27-A  
EXCEPT THAT MIL SPEC T-27-A SHALL NOT APPEAR  
ON CASE AND QUALIFICATION TESTING IS NOT REQUIRED.

THE TECHNICAL MATERIEL CORPORATION claims  
no responsibility for the use of this drawing as a  
basis for design or engineering information  
only and may not be reproduced or used  
to manufacture anything shown hereon without per-  
mission from THE TECHNICAL MATERIEL CORPORA-  
TION to the user. This drawing is loaned for mutual  
assistance and is subject to recall at any time.

Property of:  
THE TECHNICAL MATERIEL CORPORATION  
MAMARONECK, NEW YORK

SYM	DESCRIPTION	DATE	CH. NO.	DRAFTS	CHECKER	ENG. APP.
	UNLESS OTHERWISE SPECIFIED: DIMENSIONS ARE IN INCHES TOLERANCES ON FRACTIONS $\pm 1/64$ DECIMALS $\pm .005$ ANGLES $\pm 1/2^\circ$					
	SCALE: MAXIMUM ALLOWABLE TOLERANCES HAVE BEEN DETERMINED AND ANY DEVIATIONS WILL BE CAUSE FOR REJECTION. REMOVE ALL BURRS AND SHARP EDGES					

REQ. PER UNIT	MODEL	SECTION	ASS'Y. NO.	DATE
1	TRX			9-8-61
	USED ON			

REQ. ITEM	PART NO.	DESCRIPTION	SYMBOL
		THE TECHNICAL MATERIEL CORP. MAMARONECK, NEW YORK	
	STOCK SIZE	TRANSFORMER, POWER	
	MATERIAL	STEP UP & STEP DOWN	
	TYPE & TEMPER	HEAT TREAT. SPEC.	DRAWN
			CHECKER
	FINISH & SPEC. NO.	ELEC. DES. APP.	MECH. DES. APP.
			FINAL APPROVAL
			TF-238