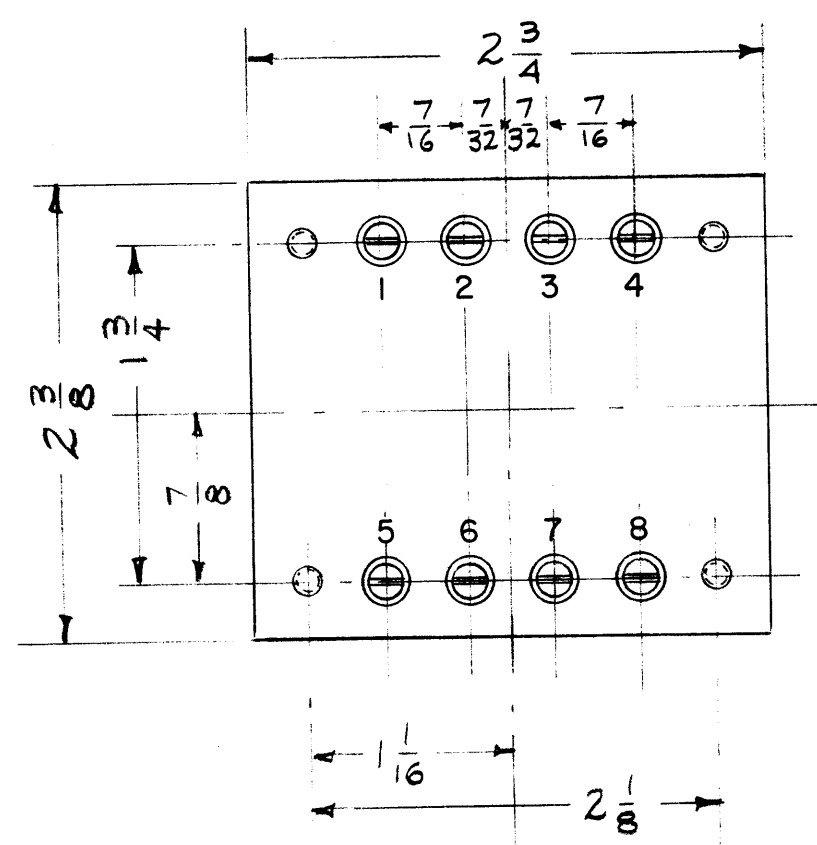
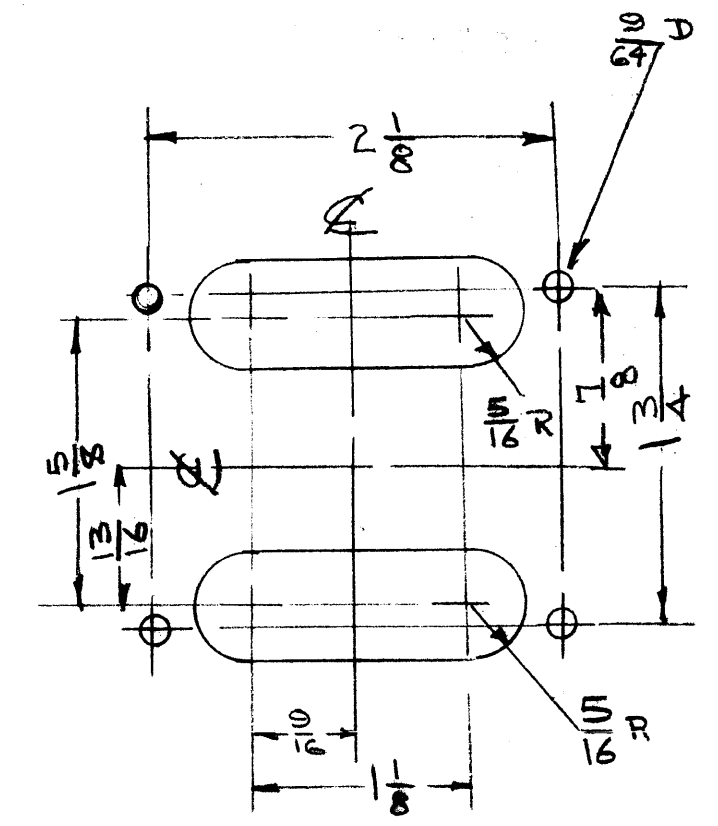
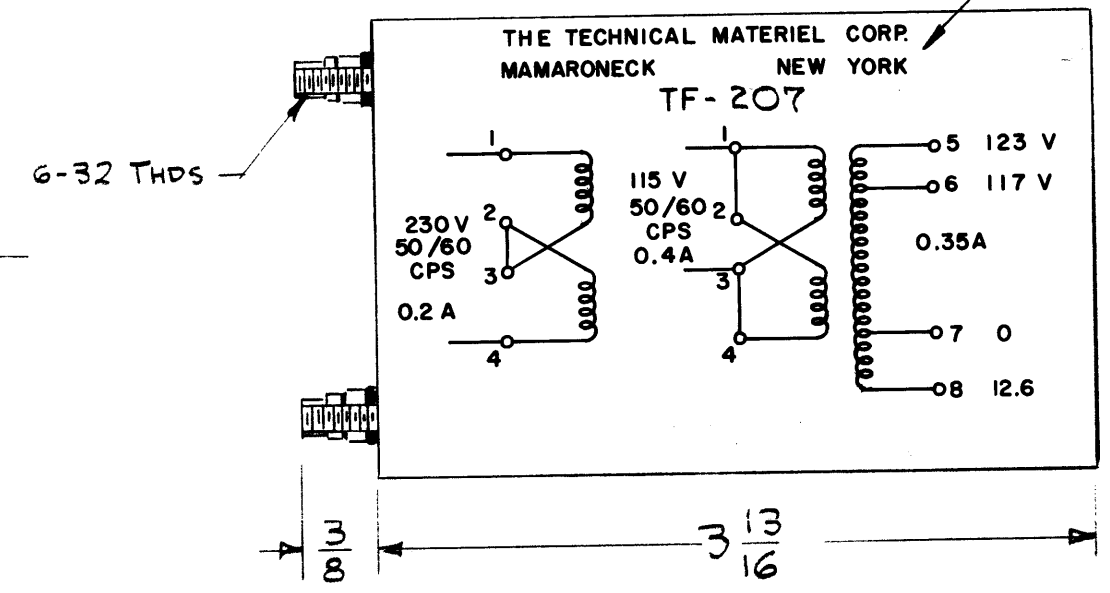


TF-207 B.



STAMP CASE AS SHOWN BLACK GOTHIC.



MOUNTING DETAIL

NOTE: MANUFACTURED IN ACCORDANCE WITH MIL SPEC T-27A EXCEPT THAT MIL SPEC T-27-A SHALL NOT APPEAR ON CASE AND QUALIFICATION TESTING IS NOT REQUIRED.

ELECTRICAL DATA
 PRIMARY — 115/230 V, 50/60 CPS.
 SECONDARY — 117/123 V, RMS. 40 W @ 117 V, OR 42 W @ 123 V, 12.6 V @ .3 AMP.
 INSULATION — WINDINGS INSULATED FOR 1000 V.
 HEAT RISE — MAX. 40°C RISE.

MECHANICAL DATA
 CASE — HERMETICALLY SEALED IN RECTANGULAR STEEL CASE, MIL TYPE GA
 FINISH — SMOOTH GREY ENAMEL (TMC SPEC. S-115)
 TERMINALS — 3/8" LONG O/A. SOLDER LUG TERMINALS AND CERAMIC BUSHINGS

ISSUE	ITEM	CHANGED FR	M	DATE	CH. NO.	DRAFTS	CHECKER	ENG. APP.
B	1	NOTE ADDED (MIL T-27-A)		6-30-60	2572			
A	1	ON MTS DETAIL-1-5/8 WAS 3/16 R WAS 3/16		10/14/59	1435			

TOLERANCES: DEC. DIM. ±, FRAC. DIM. ±, ANGULAR DIM. ±. SCALE: A. MAXIMUM ALL WABLE TOLERANCES HAVE BEEN DETERMINED AND ANY DEVIATIONS WILL BE CAUSE FOR REJECTION: REM VE ALL BURRS AND SHARP ED ES.

1	MCU-2	ATS-50(70)		6-11-59
REQ. PER UNIT	MODEL	PROJECT NO.	ASSY. NO.	DATE
USED ON				

REQ.	ITEM	PART NO.	DESCRIPTION	SYMB L
			THE TECHNICAL MATERIEL CORP. MAMARONECK, NEW YORK	
STOCK SIZE			TRANSFORMER, POWER,	
MATERIAL			STEP-UP	
TYPE & TEMPER		HEATTREAT. SPEC.	DRAWN	CHECKED
			6-11-59	
FINI H & SPEC. NO.		ELEC. DES. APP	MECH. DES. APP	FINAL APPROVAL
				TF-207 B.