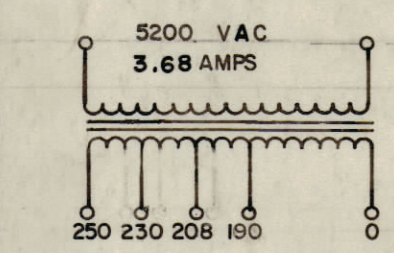


IF IT IS FOUND DESIRABLE TO CHANGE ANY TOLERANCE OR OTHER DETAIL SPECIFIED ON THIS DRAWING NOTIFY THE PURCHASER PROMPTLY.
 MAXIMUM ALLOWABLE TOLERANCES HAVE BEEN DETERMINED AND DEVIATIONS WILL BE CAUSE FOR REJECTION. REMOVE ALL BURNS AND SHARP EDGES

18 x 9 1/2 x 3/8
 BLACK PHENOLIC

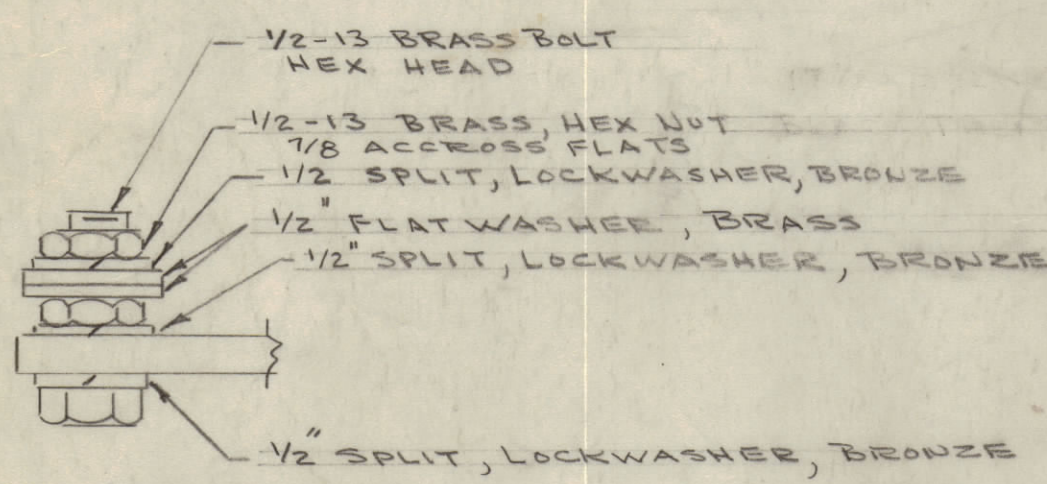
Stamping 1/8 high White Gothic As Shown

THE TECHNICAL MATERIEL CORP
 MAMARONECK, NEW YORK
 TF 211

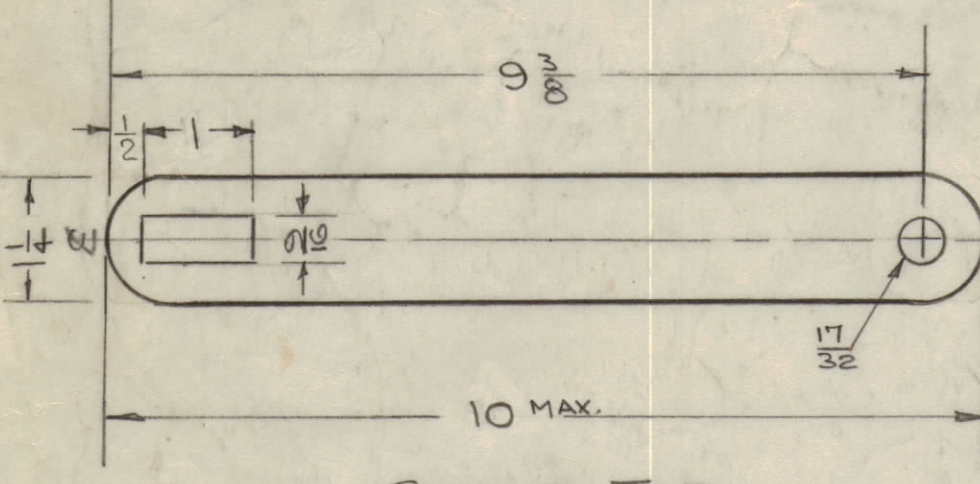


250V 230V 208V 190V

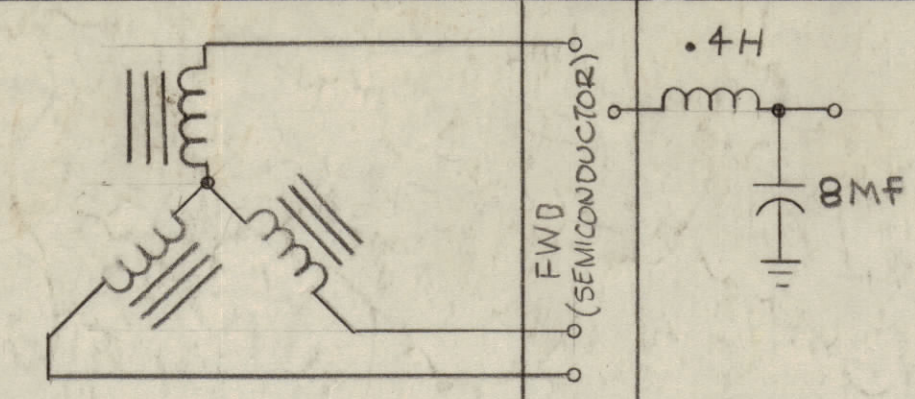
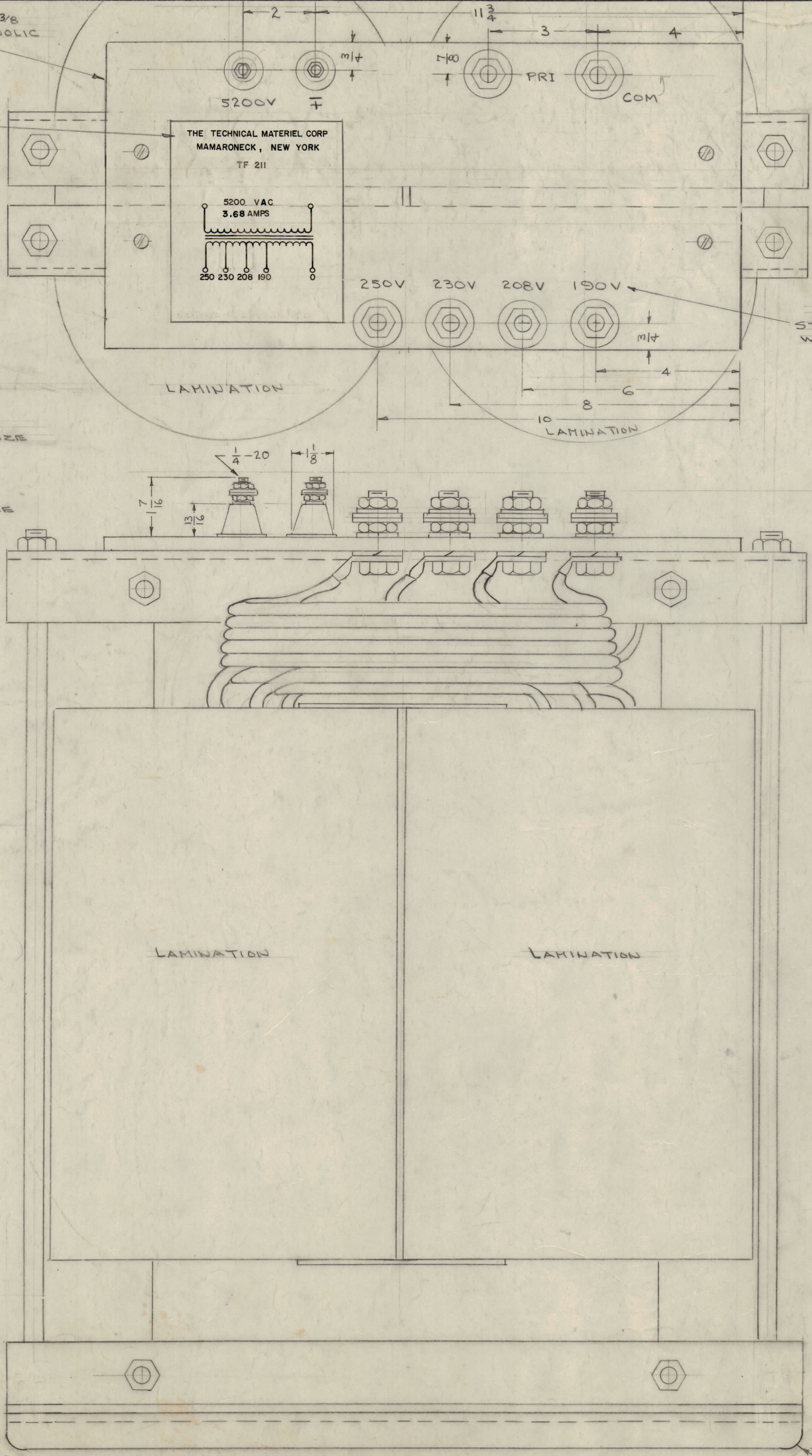
STAMPING, 1/8 HIGH WHITE GOTHIC AS SHOWN



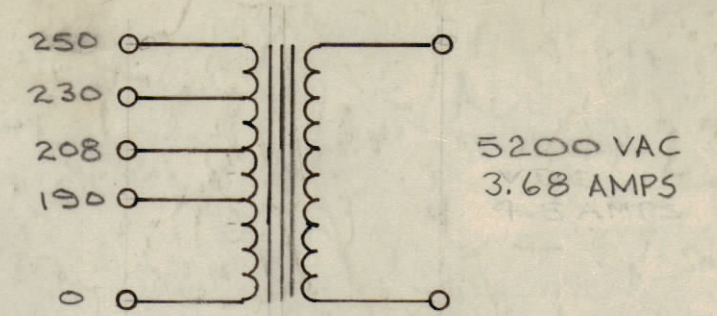
TERMINAL DETAIL
 6 REQ.



STRIP TAP
 TO BE SUPPLIED BY MEGR.
 1/8 thick BRASS



TYPICAL OPERATING CIRCUIT
 (ONLY SECONDARIES SHOWN)

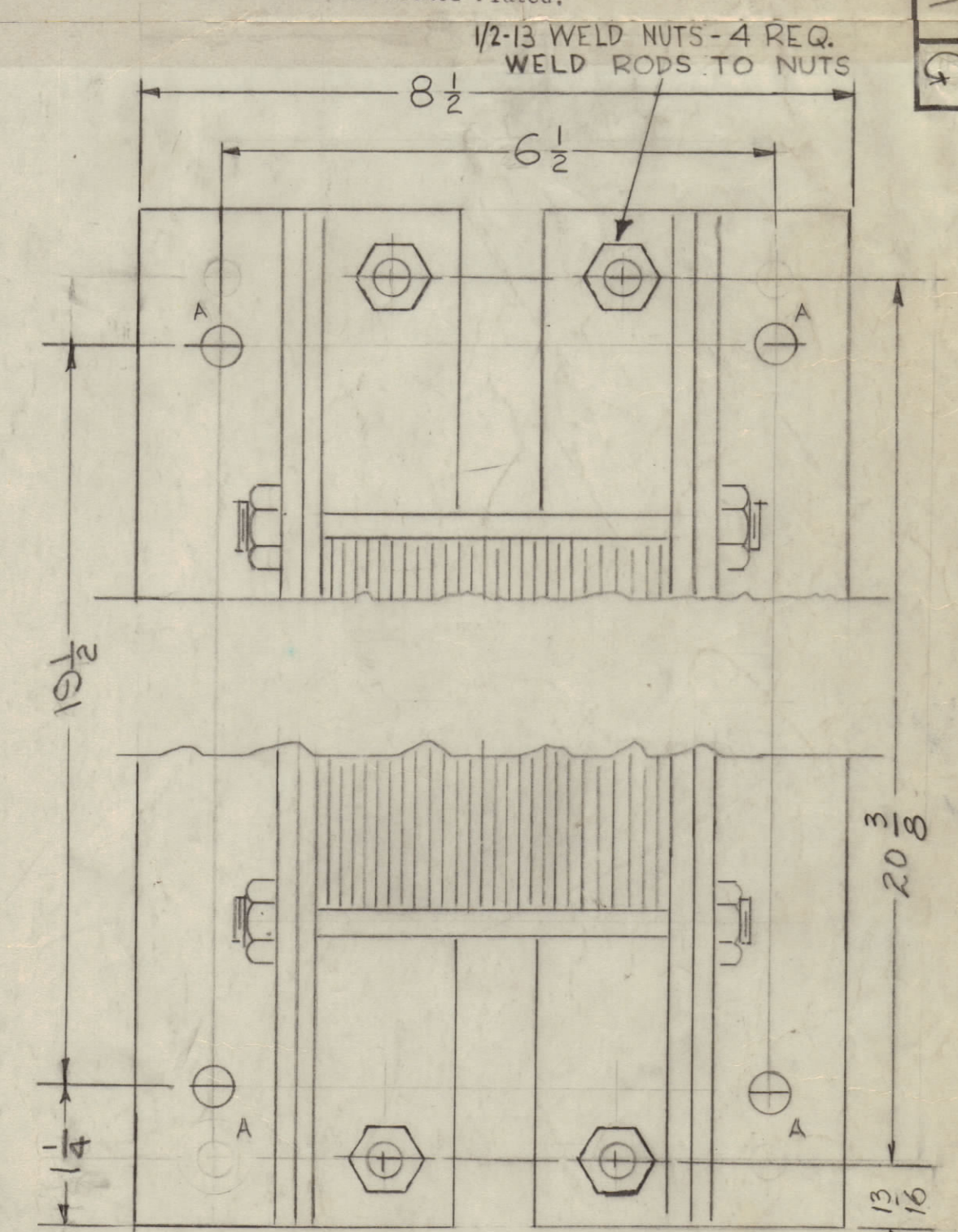
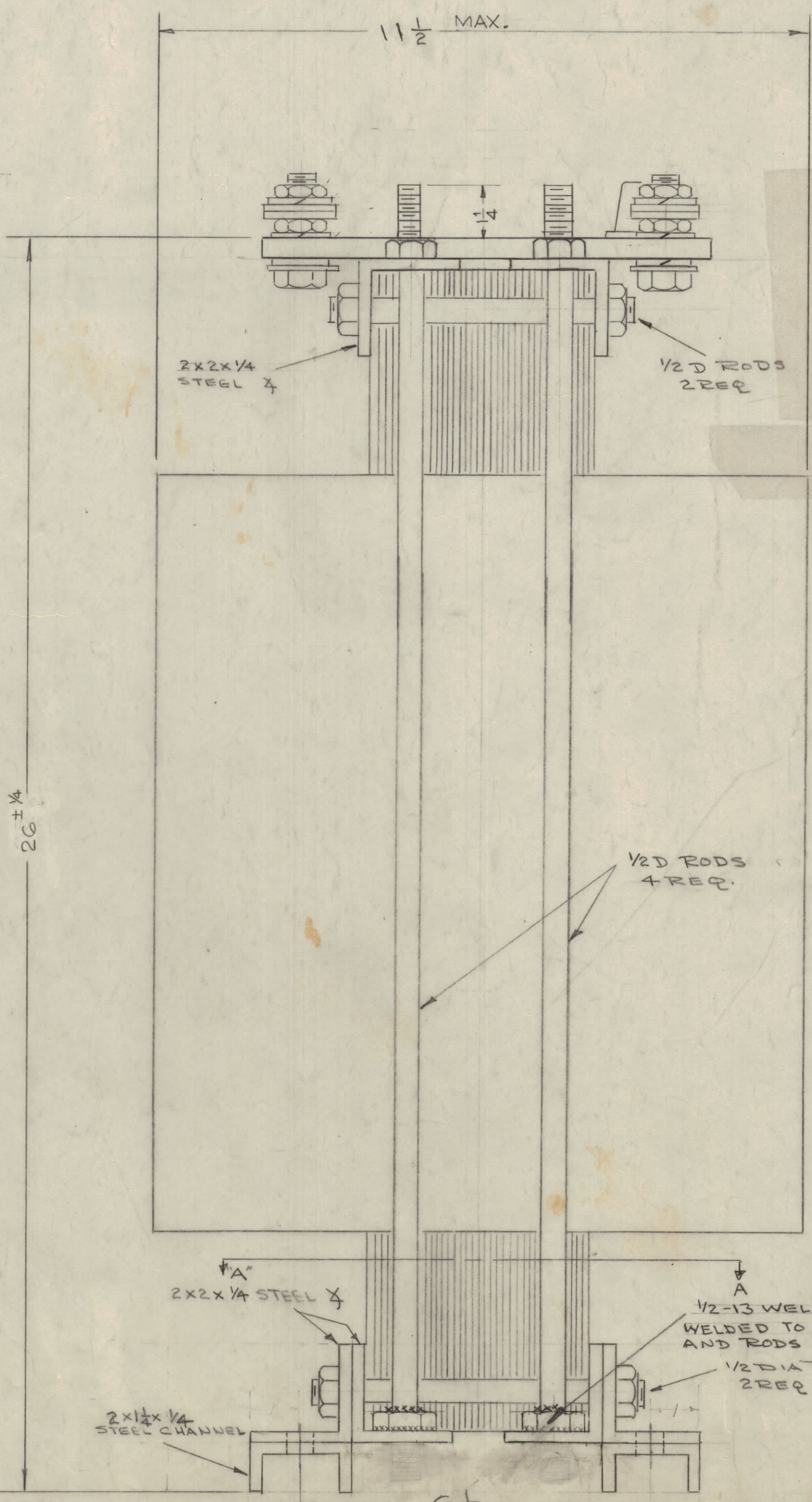


ELECTRICAL SPEC'S
 WINDING: TWO (2)
 INPUT: 190, 208, 230, 250V AC, 50/60Hz, 1Ø
 CURRENT RATING: 3.68 AMPS RMS
 SECONDARY WINDING - 5200 VAC
 WORKING VOLTAGE ~ 12,000 VAC
 TEST VOLTAGE ~ 25,000 VDC CONT. PRI. SHORTED TO GND.
 MECHANICAL SPEC'S:
 CONSTRUCTION: OPEN FRAME TYPE
 FINISH: TMC SMOOTH GRAY ENAMEL (S115)
 (EXCEPT TERMINAL STRIP & TERMINALS)

NOTE:
 MANUFACTURED IN ACCORDANCE WITH MIL SPEC T-27-A EXCEPT THAT MIL SPEC T-27-A SHALL NOT APPEAR ON CASE AND QUALIFICATION TESTING IS NOT REQUIRED.

- SPECIFICATIONS -

Pri. Wire: Double Daglass wgt per coil. 60 lbs.
 Sec. Wire: Double Polythermalose wgt. per coil. 60 lbs.
 Layer Insulation: Fishpaper
 Winding Insulation: 20 Layers .010 Fibremate under sec.
 15 Layers .010 Fibremate over sec.
 Lamination: Transformer Grade C. Annealed after cutting.
 Total wgt. required. 260 lbs.
 Impregnation: Preheat laminated unit 12 hours at 250° F.
 Vacuum Varnish impregnate.
 Bake 15 hours at 275° F.
 Repeat Vacuum Varnish impregnation and bake for 15 hrs.
 Terminal Hardware: All Brass Nickel Plated.



MOUNTING DETAIL "A-A"
 "A" = 1/8 DIA - 4 HOLES

G	SECONDARY CIRCUIT SCHEM. ADD. VOLT. RATINGS WERE "DC".	4-5-65	13805	RF	906	000	
F	TERM. DIM. AND BLES. SPALL REVISED. ON STRIP DIMS TO SPEC. 1.12. WERE 3.830, 1.10, 1/4.	7-9-63	9490	RF	10.	100	
E	ON SIDE VIEW DIM 22" WAS 23.12. 10-1-63. DIM WAS 17.12 x 6.12 x 3.6.	1-3-62	6138	J.F.	100	000	
D	SPEC. NOTE ADDED.	7-18-61	5289	MAE	RLI	000	
C	ON ELEC. SPEC. INPUT 10 WAS 2Ø. NOTE ADDED (MIL-T-27-A).	4-28-60	2572	MAE	RLI	000	
B	1/8 DIA WAS 5/16. 1/2-13 WELD NUTS ADDED.						
A	ROUND CORNERS 1/4R ADDED. Elect. Specs Clarified. 22" DIM WAS 21 3/4.	1/12/60	1754	J.C.B.	100	000	
ISSUE	ITEM	CHANGED FROM	DATE	CN. NO.	DRAFTS	CHECKER	ENG. APP.
TOLERANCES		SCALE:					
ALL	DEC. DIM. ±	DRILL PUNCH, COMMERCIAL STOCK					
OTHERS	FRAC. DIM. ±	SIZES AND MANUFACTURERS					
	ANGULAR DIM. ±	TOLERANCES ARE NOT INCLUDED.					

3	SPT-10N	PROJECT NO.	ASSY. NO.	12-10-59
REQ PER UNIT	MODEL	USED ON	DATE	FINAL APPROVAL
				TF 211 G