

TF-196 C

**ELECTRICAL SPECIFICATIONS:**

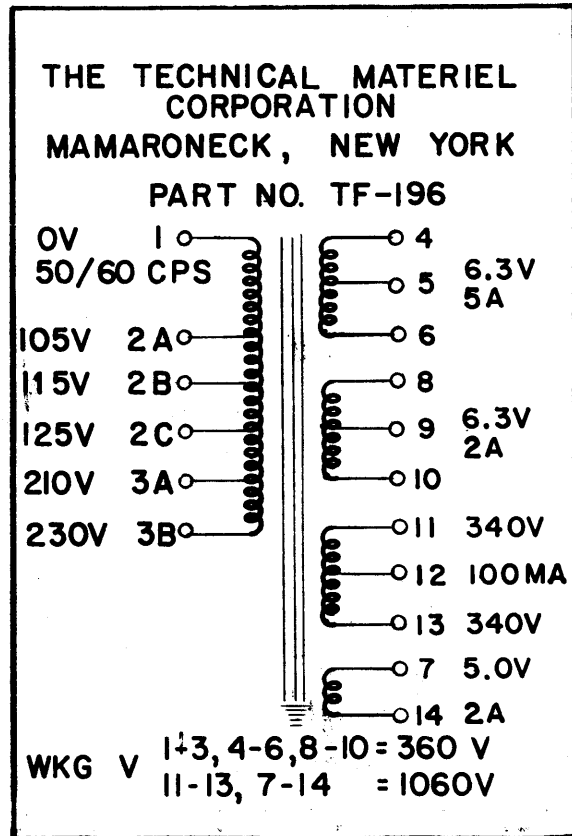
- PRIMARY: 105V, 115V, 125V, 210V, 230V, 50/60 CPS, Single Phase
- SECONDARY NO. 1: 6.3V at 5 amps, C.T.
- SECONDARY NO. 2: 6.3V at 2 amps, C.T.
- SECONDARY NO. 3: 340-0-340 RMS, 100 ma d.c. operating into 4 mfd. capacity input filter.
- SECONDARY NO. 4: 5.0V at 2 amps.
- INSULATION: All windings insulated for 1000 volts.
- HEAT RISE: Max. temperature rise + 40° C

**MECHANICAL SPECIFICATIONS:**

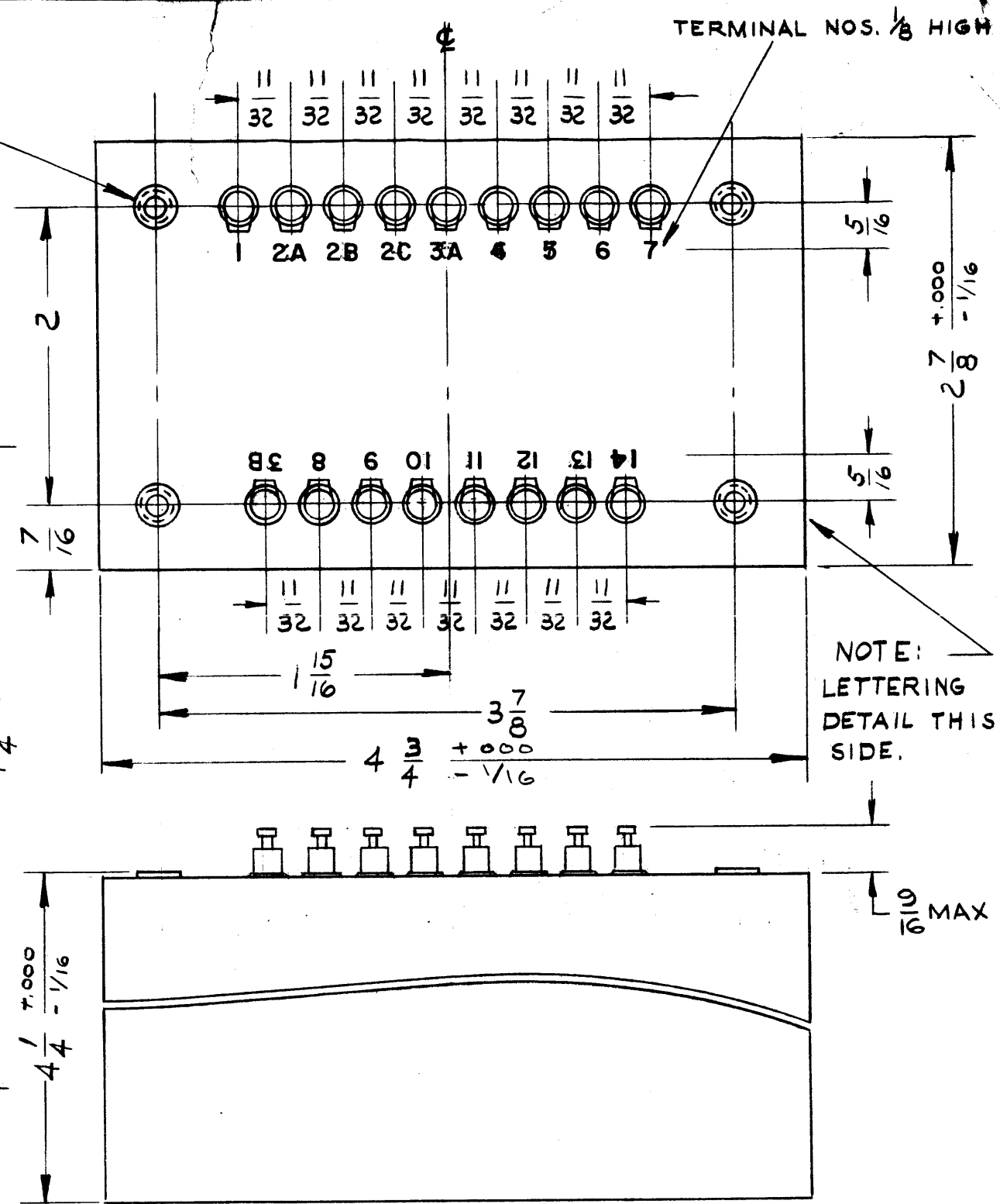
- CASE: Hermetically sealed in rectangular steel case.
- FINISH: Smooth dark gray enamel, Navy Spec. 52E4 Type C, gloss 35-40 units, or equal.
- TERMINALS: 3/8" long o/a, Solder lugs and ceramic bushings shall be used located on mounting end.
- SIZE: Exclusive of terminals:-  
2-7/8 x 4-1/4 x 4-3/4
- LETTERING: Lettering detail to appear on side shown. Terminals shall be metal stamped 1 to 14 as shown.

NOTE: MANUFACTURED IN ACCORDANCE WITH MIL SPEC T-27-A EXCEPT THAT MIL SPEC T-27-A SHALL NOT APPEAR ON CASE AND QUALIFICATION TESTING IS NOT REQUIRED.

10-32 x 1/2 DP.  
THEADED INSERT  
4 REQ'D.



LETTERING DETAIL



NOTE: LETTERING DETAIL THIS SIDE.

Notice to Persons Receiving This Drawing

THE TECHNICAL MATERIEL CORPORATION claims proprietary right in the material disclosed herein. This drawing is issued in confidence for engineering information only and may not be reproduced or used to manufacture anything shown hereon without permission from THE TECHNICAL MATERIEL CORPORATION to the user. This drawing is loaned for mutual assistance and is subject to recall at any time.

Property of:  
THE TECHNICAL MATERIEL CORPORATION  
MAMARONECK, NEW YORK

ISSUE	ITEM	CHANGED FROM	DATE	CH. NO.	DRAFTS	CHECKER	ENG. APP.
C	1	9/16 MAX WAS 3/8	9-10-63	9917		JCB	JCB
B	1	NOTE ADDED (MIL T-27A)	6-29-60	2572		JCB	JCB
A	1	Errors corrected on terminal nos 7 & 14	4/9/59	917		J.C.B.	J.C.B.
TOLERANCES		SCALE:					
DEC. DIM. ±		MAXIMUM ALLOWABLE TOLERANCES HAVE BEEN DETERMINED AND ANY DEVIATIONS WILL BE CAUSE FOR REJECTION. REMOVE ALL BURRS AND SHARP EDGES					
FRAC. DIM. ±							
ANGULAR DIM. ±							

REQ. PER UNIT	MODEL	PROJECT NO.	ASS'Y. NO.	DATE
1	FFR-3			9/30/58
USED ON				

REQ. ITEM	PART NO.	DESCRIPTION	SYMBOL
		<b>THE TECHNICAL MATERIEL CORP. MAMARONECK, NEW YORK</b>	
STOCK SIZE		<b>POWER TRANSFORMER</b>	
MATERIAL			
TYPE & TEMPER		HEAT TREAT. SPEC.	FINAL APPROVAL
		DRAWN	CHECKED
		JORILLO	JCB
		P.L.K. 9/30/58	
FINISH & SPEC. NO.		ELEC. DES. APP.	MECH. DES. APP.
			TF-196 C