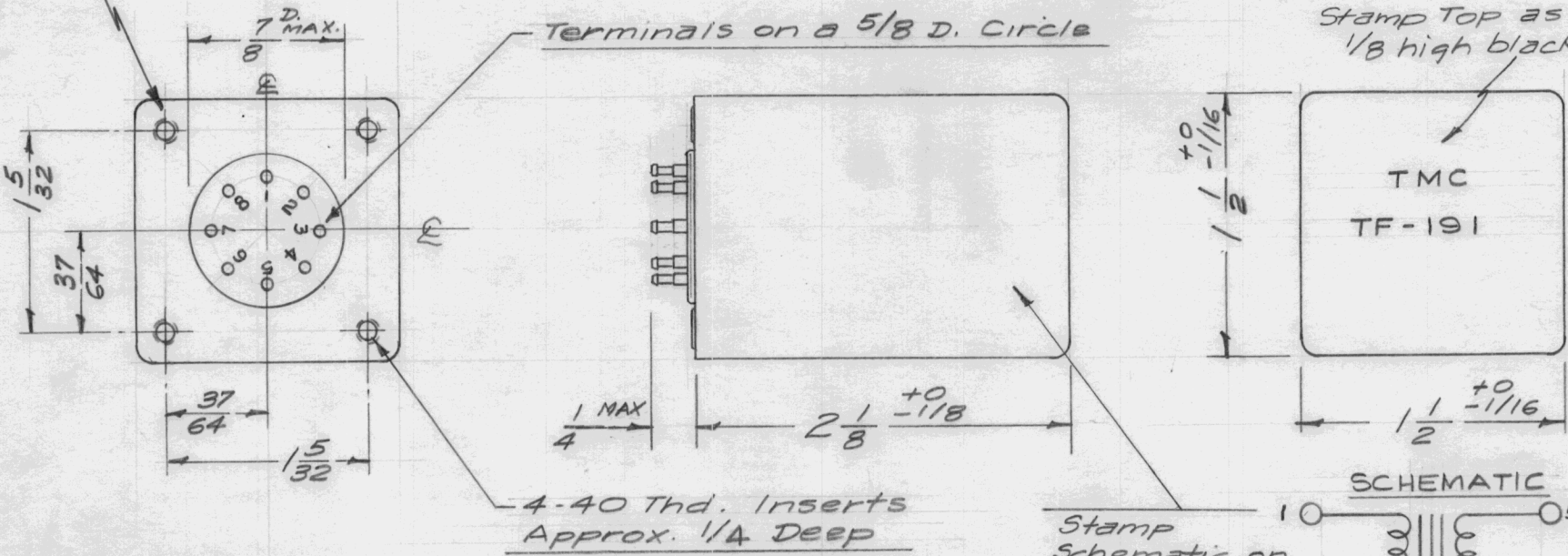


| | | | | | |
|---------------|------------|------------|---------|--------|---|
| REQ. PER UNIT | USED ON | | | TF-191 | A |
| | MODEL | ASS'Y. NO. | DATE | | |
| 2 | A-1532/PVC | | 7-29-58 | | |

Ground Shield to Insert Inside Can

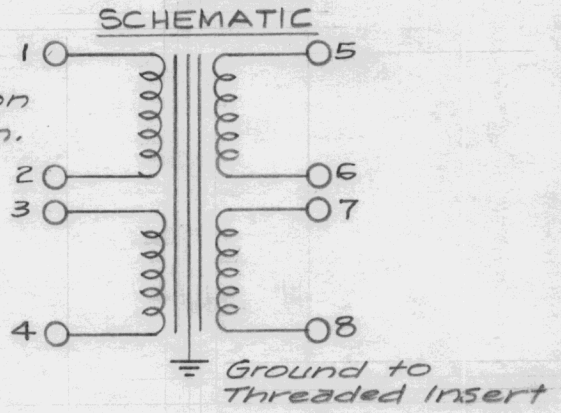
Terminals on a 5/8 D. Circle

Stamp TOP as Shown
1/8 high black Gothic



| IMPEDANCE (OHMS) | PRIMARY CONNECTION | | SECONDARY CONN. | |
|---------------------|--------------------|-------|-----------------|-------|
| | CONNECT TO | JOIN | CONNECT TO | JOIN |
| 500 (or 600) | 1 & 4 | 2 & 3 | 5 & 8 | 6 & 7 |

Stamp Schematic on Side of Can.
(Black)



RESPONSE - ± 2 db from 30 to 20,000 cps.

REF: BIRKSHIRE TRANSFORMER CO.

| REQ. ITEM | PART NO. | DESCRIPTION | SYMBOL |
|-----------------------|----------|---|---------------------------------------|
| | | THE TECHNICAL MATERIEL CORP. MAMARONECK. NEW YORK | |
| | | TRANSFORMER, AUDIO | |
| A | 1 | APPROX INSERT DEPTH WAS 1/2 | |
| ISSUE | ITEM | CHANGED FROM | DATE CH. NO. DRAFTS CHECKER ENG. APP. |
| TOLERANCES | | SCALE: FULL | |
| DEC. DIM. \pm | | MAXIMUM ALLOWABLE TOLERANCES HAVE BEEN DETERMINED AND ANY DEVIATIONS WILL BE CAUSE FOR REJECTION. REMOVE ALL BURRS AND SHARP EDGES | |
| FRAC. DIM. \pm 1/64 | | | |
| ANGULAR DIM. \pm | | | |
| FINISH & SPEC. NO. | | ELEC. DES. APP. | MECH. DES. APP. |
| | | 16 7/29/58 | |
| | | DRAWN | CHECKED |
| | | | FINAL APPROVAL |
| | | | TF-191 |
| | | | A |